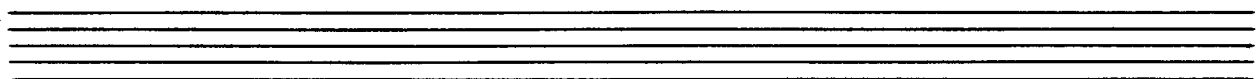
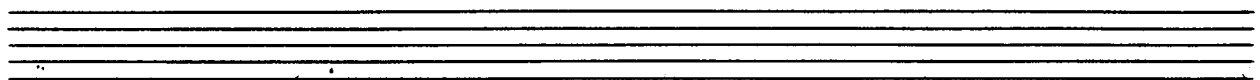
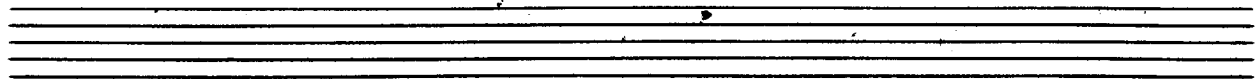
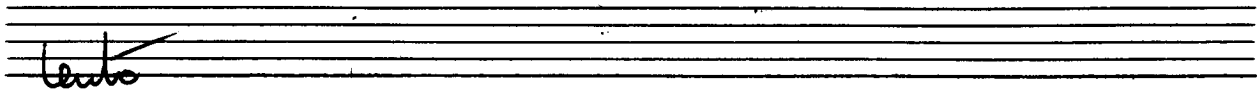
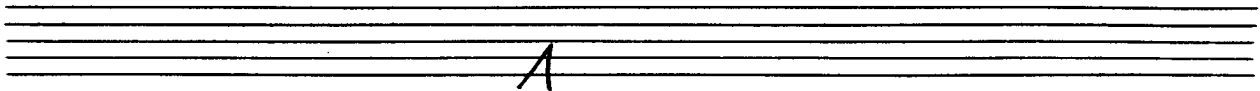


**Notenheft**



F 153 Scherbaum 1924

Adolf Scherbaum, o. B. (7 Teile für Klavier), SWV 1924 (o.J.)  
© 2010 Inge Adamiker-Scherbaum. Alle Rechte vorbehalten.

Handwritten musical score for the first system. The treble clef staff contains a melodic line with a slur over the first two measures and a fermata over the last note. The bass clef staff contains a bass line with a slur over the first two measures and a fermata over the last note. The key signature has one sharp (F#).

Handwritten musical score for the second system. The treble clef staff continues the melodic line with a slur and a fermata. The bass clef staff continues the bass line with a slur and a fermata. The key signature has one sharp (F#).

Handwritten musical score for the third system. The treble clef staff concludes the melodic line with a slur and a fermata. The bass clef staff concludes the bass line with a slur and a fermata. The key signature has one sharp (F#).

Handwritten musical score for the first system. The top staff contains a vocal line with the lyrics "mit - die" written above it. The notes are G4, A4, B4, C5, and D5, with slurs and accents. The middle and bottom staves show piano accompaniment with chords and rhythmic markings.

Handwritten musical score for the second system. The top staff features a vocal line with notes G4, A4, B4, C5, and D5, including slurs and accents. The piano accompaniment in the lower staves includes dynamic markings such as *fz* and *pp*.

Handwritten musical score for the third system. The top staff shows a vocal line with notes G4, A4, B4, C5, and D5, with slurs and accents. The piano accompaniment in the lower staves includes dynamic markings such as *fz* and *pp*.

Handwritten musical score for the first system. The treble clef staff contains a melody with a key signature of one sharp (F#) and a common time signature. The piano accompaniment is written on a grand staff (treble and bass clefs) with chords and some slurs.

Handwritten musical score for the second system. It includes a handwritten annotation "gut..." above the treble staff. The notation continues with melodic lines and piano accompaniment.

Handwritten musical score for the third system. It features a handwritten annotation "gut... (2. + Dec. ca. 1840)" above the treble staff. The notation includes a circled "P" in the piano part and various musical symbols.

*dim.*

*gr. rit.*

2

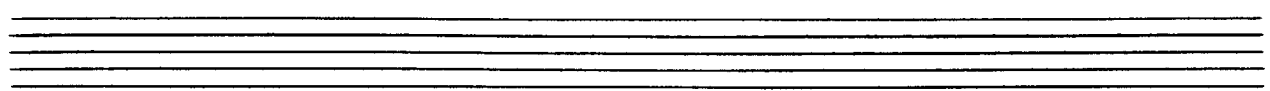
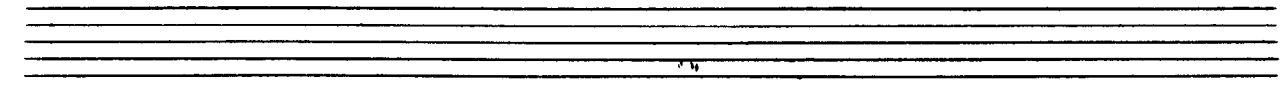
rasch

Handwritten musical notation for the first system, measures 1-4. The music is written on a grand staff with treble and bass clefs. The first measure starts with a forte (f) dynamic. The melody in the right hand consists of quarter notes, and the bass line consists of chords. There are some handwritten annotations, including a '4' in the first measure and a '9' in the second measure.

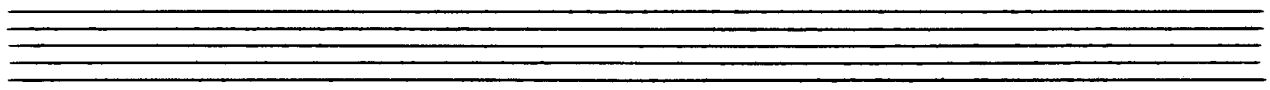
Handwritten musical notation for the second system, measures 5-8. The melody in the right hand continues with quarter notes, some beamed together. The bass line features chords with handwritten annotations like '#5' and '100'. There are also some scribbles in the first measure of this system.

Handwritten musical notation for the third system, measures 9-12. The melody in the right hand continues with quarter notes, some beamed together. The bass line features chords with handwritten annotations like '10' and '100'. There are also some scribbles in the first measure of this system.

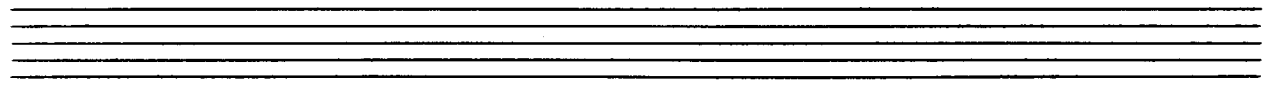
6



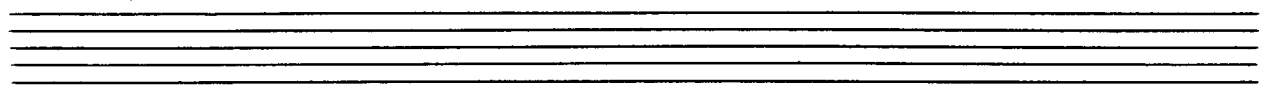
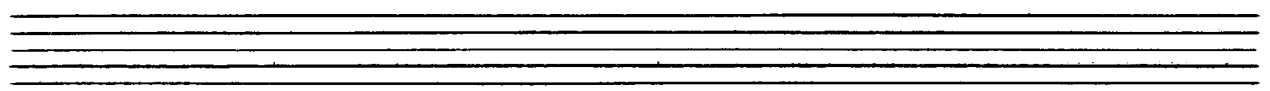
Handwritten musical notation for the first system. The treble clef staff contains a melodic line with notes G4, A4, B4, C5, B4, A4, G4, and a final quarter rest. A slur covers the first three notes. The bass clef staff contains chords: G4-B4-D5 (with a sharp sign), a slash, G4-B4-D5 (with a sharp sign), and a slash. A fermata is placed over the final chord.



Handwritten musical notation for the second system. The treble clef staff contains a melodic line with notes G4, A4, B4, C5, B4, A4, G4, and a final quarter rest. A slur covers the first three notes. The bass clef staff contains chords: G4-B4-D5, a slash, G4-B4-D5, and a slash. A fermata is placed over the final chord.



Handwritten musical notation for the third system. The treble clef staff contains a complex melodic line with notes G4, A4, B4, C5, B4, A4, G4, and a final quarter rest. A slur covers the first three notes. The bass clef staff contains chords: G4-B4-D5, a slash, G4-B4-D5, and a slash. A fermata is placed over the final chord.



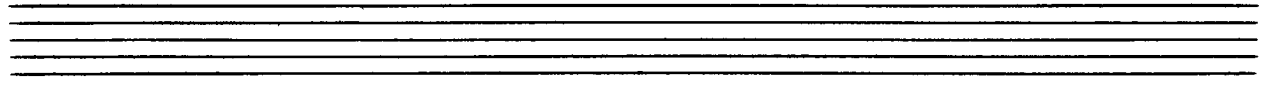
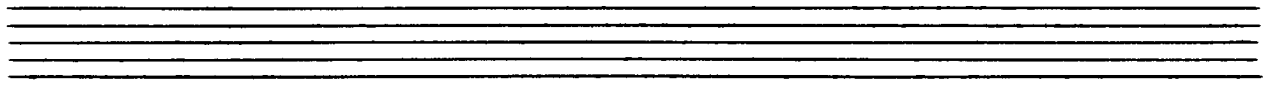
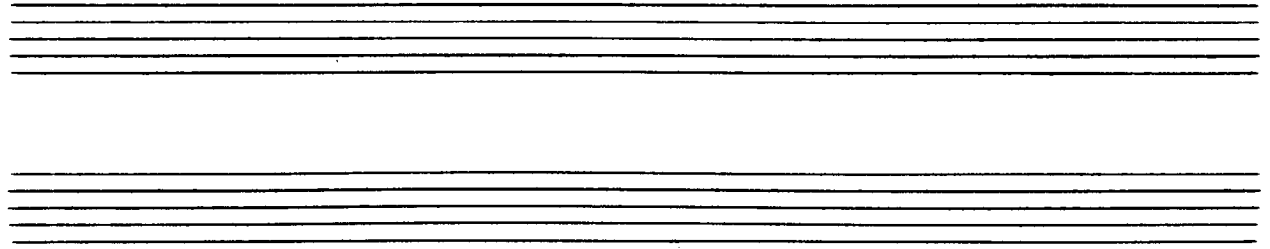


Handwritten musical notation on a grand staff. The system includes two empty staves at the top. The main system consists of two staves with notes, rests, and accidentals. A large 'V' is written above the first measure. The notation is in a key with one sharp (F#) and a common time signature (C).

Handwritten musical notation on a grand staff. The system includes two empty staves at the top. The main system consists of two staves with notes, rests, and accidentals. The notation is in a key with one sharp (F#) and a common time signature (C).

Handwritten musical notation on a grand staff. The system includes two empty staves at the top. The main system consists of two staves with notes, rests, and accidentals. The notation is in a key with one sharp (F#) and a common time signature (C).

Two empty grand staves at the bottom of the page.



1+ D. C. mit  
||:||  
2+ f. mit ||:||  
dann weiter

Guedi

(rit - dim)

guedi

(p) >

Handwritten musical notation on a grand staff. The top staff has a treble clef and a circled 'pp' dynamic marking. The bottom staff has a bass clef. Between the staves, there are handwritten notes: 'C' above a treble clef, two sharps (#) above a treble clef, and 'C' above a bass clef. A vertical bar line is present. To the right of the bar line, there is a large, stylized handwritten flourish or signature.

3

lento

Handwritten musical notation for the first system. The treble clef staff contains a melody starting with a quarter note, followed by a half note, and then a quarter note. The bass clef staff contains a bass line with a quarter note, a half note, and a quarter note. There are dynamic markings 'p' and 'V' in both staves.

Handwritten musical notation for the second system. The treble clef staff contains a melody with a quarter note, a half note, and a quarter note. The bass clef staff contains a bass line with a quarter note, a half note, and a quarter note. There are dynamic markings 'V' in both staves.

Handwritten musical notation for the third system. The treble clef staff contains a melody with a quarter note, a half note, and a quarter note. The bass clef staff contains a bass line with a quarter note, a half note, and a quarter note. There are dynamic markings 'p' and 'V' in both staves.

Handwritten musical score for the first system. It consists of a treble clef, a treble staff with notes and chords, and a bass staff with notes and chords. The music is in a 4/4 time signature and includes dynamic markings like 'mf'. There are some handwritten annotations above the treble staff, possibly indicating fingerings or phrasing.

Handwritten musical score for the second system. It consists of a treble clef, a treble staff with notes and chords, and a bass staff with notes and chords. The music is in a 4/4 time signature and includes the handwritten text 'mit dir'. There are some handwritten annotations above the treble staff, possibly indicating fingerings or phrasing.

Handwritten musical score for the third system. It consists of a treble clef, a treble staff with notes and chords, and a bass staff with notes and chords. The music is in a 4/4 time signature and includes the handwritten text 'frei' and 'D.C. al'. There are some handwritten annotations above the treble staff, possibly indicating fingerings or phrasing.

Handwritten musical score for a piano piece. The score is written on two staves. The top staff has a treble clef and a key signature of one sharp (F#). The bottom staff has a bass clef. The music consists of several measures with notes, rests, and dynamic markings. Above the first measure, the words "sit ein" are written. There are various annotations, including a circled "p" and a "V" marking. The piece ends with a double bar line and a flourish.

4

*Andante*

Handwritten musical notation for the first system, measures 1-2. The system consists of two staves. The upper staff is in treble clef and contains a melodic line with eighth and quarter notes, including accidentals (sharps and naturals). The lower staff is in bass clef and contains a bass line with quarter notes and rests. A circled 'p' (piano) dynamic marking is present at the beginning of the first measure. A fermata is placed over the end of the second measure.

Handwritten musical notation for the second system, measures 3-4. The system consists of two staves. The upper staff continues the melodic line from the first system. The lower staff contains a bass line with chords and rests. A fermata is placed over the end of the fourth measure.

Handwritten musical notation for the third system, measures 5-6. The system consists of two staves. The upper staff continues the melodic line. The lower staff contains a bass line with chords and rests. A fermata is placed over the end of the sixth measure.



Handwritten musical notation on two staves. The upper staff contains a treble clef, a key signature of one sharp (F#), and a 4/4 time signature. It features a melodic line with several chords and a fermata. The lower staff contains a bass clef and a bass line with chords. The word "mit" is written above the second measure of the upper staff.

Handwritten text "mit" on a single staff.

Handwritten musical notation on two staves. The upper staff has a treble clef and a circled number "77". It contains a melodic line with a fermata. The lower staff has a bass clef and a bass line with chords. The word "mit" is written above the first measure of the upper staff.

Handwritten musical notation on two staves. The upper staff has a treble clef and contains a series of chords. The lower staff has a bass clef and contains a series of chords. The word "mit" is written above the first measure of the upper staff.

Handwritten text: "1. + D.C.", "2. + D.C. al", and a double bar line with a repeat sign.

*f* *sehr ruhig (sit-dün)*

5

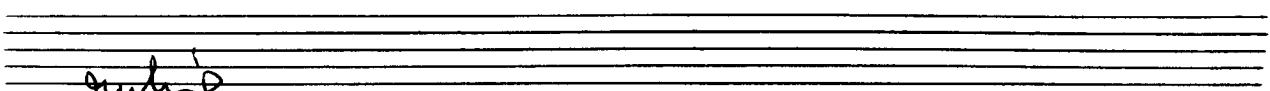
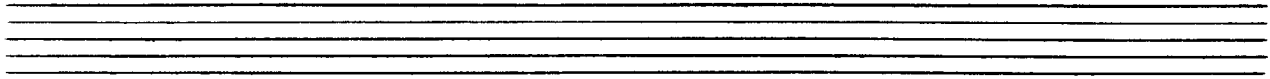
Rasch

Handwritten musical notation for the first system, featuring a treble and bass clef with various notes, rests, and dynamic markings like accents and slurs.

Handwritten musical notation for the second system, including a circled sharp sign in the treble clef and complex chordal structures.

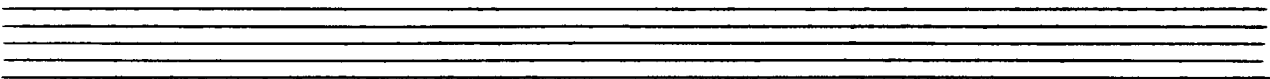
Handwritten musical notation for the third system, showing a treble clef with a melodic line and a bass clef with a simple accompaniment.

Handwritten musical notation for the fourth system, ending with a circled "Fine" marking and a "C" time signature.

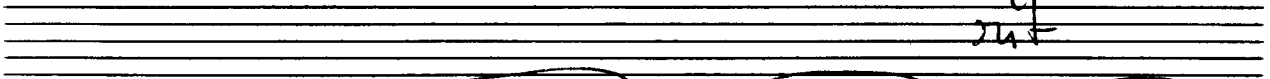


*ruhig*

Handwritten musical notation for the first system. The right hand (treble clef) contains a melodic line with slurs and accidentals (flats). The left hand (bass clef) contains a bass line with a circled 'p' and a '3/4' time signature. There are various annotations including 'z' and 'b' with arrows pointing to notes.

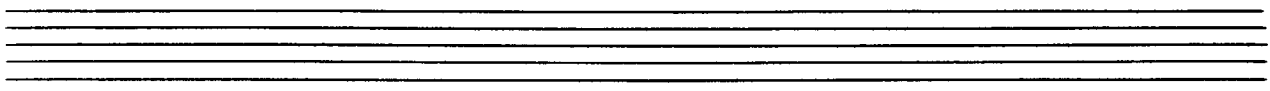


Handwritten musical notation for the second system. The right hand features a long, sweeping melodic line with a slur. The left hand has a bass line with a circled 'p' and some notes with stems.



*ruhig*

Handwritten musical notation for the third system. The right hand has a melodic line with slurs and accidentals (sharps and flats). The left hand has a bass line with a circled 'p' and notes with stems. There are various annotations including 'f' and 'p'.



*vert*

*rit...* *Crit + obs*

*lento* *rit > n*

D. C.  
ad  
Frie

6

*Pianissimo* (4x)

Handwritten musical notation for the first system. The treble clef staff contains a series of notes with accidentals (sharps) and slurs. The bass clef staff contains notes with accidentals and slurs. A circled 'p' is written at the beginning of the system.

Handwritten musical notation for the second system. The treble clef staff has notes with accidentals and slurs. The bass clef staff has notes with accidentals and slurs. Dynamic markings include a circled 'p' at the start, a circled 'f' in the middle, and another circled 'p' towards the end.

Handwritten musical notation for the third system. The treble clef staff has notes with accidentals and slurs. The bass clef staff has notes with accidentals and slurs. Dynamic markings include 'pp' at the start and 'pvp' towards the end.

Handwritten musical notation for the fourth system. The treble clef staff has notes with accidentals and slurs. The bass clef staff has notes with accidentals and slurs. A circled 'pp' is written at the start. The system ends with a fermata and a large flourish.



7

breit (frei)

Handwritten musical notation for the first system. It consists of two staves. The treble clef staff begins with a circled '7' and contains several chords and notes, including a half note G4, a quarter note F4, and a quarter note E4. The bass clef staff contains a half note G3, a quarter note F3, and a quarter note E3. There are various accidentals and dynamics markings throughout the system.

Handwritten musical notation for the second system. It consists of two staves. The treble clef staff features a series of chords and notes, including a half note G4, a quarter note F4, and a quarter note E4. The bass clef staff contains a half note G3, a quarter note F3, and a quarter note E3. There are various accidentals and dynamics markings throughout the system.

Handwritten musical notation for the third system. It consists of two staves. The treble clef staff features a series of chords and notes, including a half note G4, a quarter note F4, and a quarter note E4. The bass clef staff contains a half note G3, a quarter note F3, and a quarter note E3. There are various accidentals and dynamics markings throughout the system.

Mod. (Schubert)

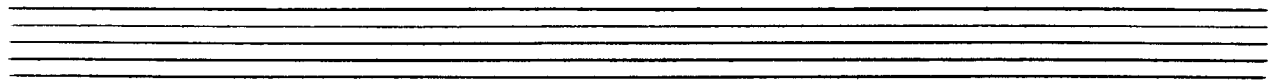
Handwritten musical notation for the first system, featuring a treble and bass clef with various notes and rests.

Handwritten musical notation for the second system, including a treble clef and a 2/4 time signature.

Handwritten musical notation for the third system, showing a treble clef and a 2/4 time signature.

Handwritten musical notation for the fourth system, including a treble clef, a 2/4 time signature, and the word "accel."

Handwritten musical notation for the fifth system, featuring a treble clef, a 4/4 time signature, circled words "bist" and "mit", and the text "2. + D. G. or"



gut + schön

