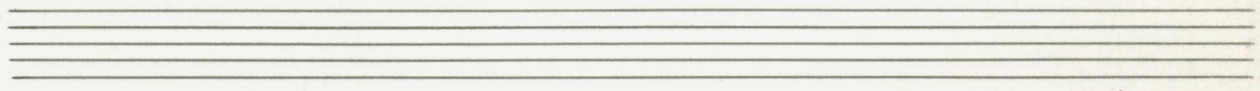
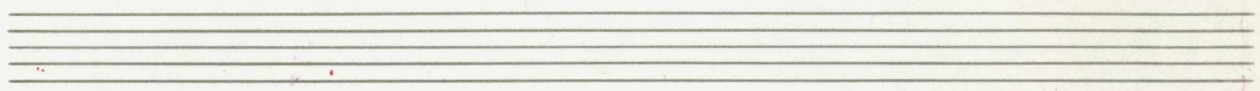
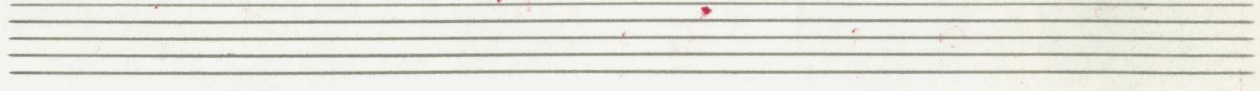
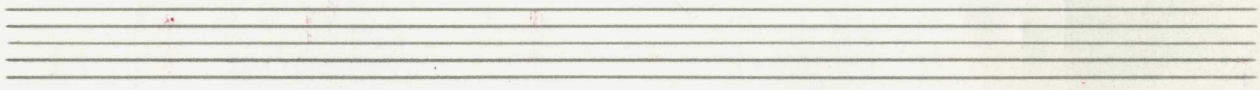
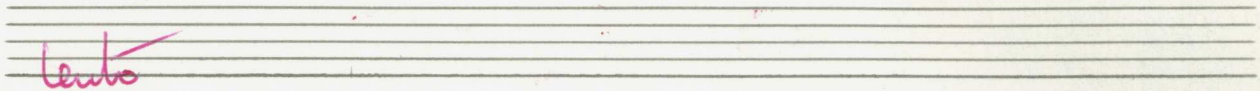
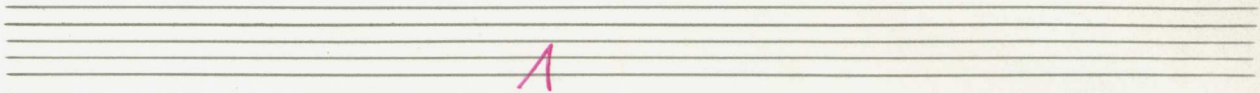


Notenheft





Handwritten musical score for the first system. The treble clef staff begins with a 4/4 time signature and contains a melodic line with a slur over the first two measures and a fermata over the last two. The bass clef staff contains a bass line with a slur over the first two measures and a fermata over the last two. Vertical lines separate the measures.

Handwritten musical score for the second system. The treble clef staff continues the melodic line, showing a key signature change to two sharps (F# and C#) in the second measure. The bass clef staff continues the bass line with similar notation. Vertical lines separate the measures.

Handwritten musical score for the third system. The treble clef staff concludes the melodic line with a final phrase. The bass clef staff concludes the bass line. Vertical lines separate the measures.

Handwritten musical score system 1. The top staff contains a vocal line with the lyrics "mit - die" written above it. The notes are $\#g$, $\#d$, $\#d$, and $\#g$. The bottom two staves show piano accompaniment with chords and rhythmic markings.

Handwritten musical score system 2. The top staff continues the vocal line with notes $\#f$, $\#f$, $\#f$, and $\#f$. The piano accompaniment in the bottom two staves includes dynamic markings such as $\#$ and ff .

Handwritten musical score system 3. The top staff continues the vocal line with notes b , $\#f$, $\#f$, b , b , b , b , and b . The piano accompaniment in the bottom two staves includes dynamic markings such as b and ff .

Handwritten musical score for the first system. The top staff is in treble clef and contains a melodic line with several notes and rests, some marked with a sharp sign. The bottom two staves are in grand staff notation (treble and bass clefs) and contain piano accompaniment with chords and rhythmic markings.

Handwritten musical score for the second system. The top staff is in treble clef. Above the staff, the tempo marking "gut..." is written. The bottom two staves are in grand staff notation. A dynamic marking "p" is visible in the bass clef staff. The music continues with melodic and accompaniment parts.

Handwritten musical score for the third system. The top staff is in treble clef. Above the staff, the tempo marking "gut... (2 + Dec. ca. 4)" is written. The bottom two staves are in grand staff notation. A dynamic marking "p" is visible in the bass clef staff. The system concludes with a double bar line and repeat signs.

dim

Handwritten musical score for the first system. It consists of a treble clef staff and a bass clef staff. The treble staff begins with a treble clef and a common time signature. The first measure contains a half note G4 with a dynamic marking of *p* and an accent (>). The second measure contains a half note F#4 with a dynamic marking of *p* and an accent (>). The third measure contains a half note E4 with a dynamic marking of *p* and an accent (>). The fourth measure contains a half note D4 with a dynamic marking of *p* and an accent (>). The fifth measure contains a half note C4 with a dynamic marking of *p* and an accent (>). The sixth measure contains a half note B3 with a dynamic marking of *p* and an accent (>). The seventh measure contains a half note A3 with a dynamic marking of *p* and an accent (>). The eighth measure contains a half note G3 with a dynamic marking of *p* and an accent (>). The bass staff contains a whole note chord of G3, B3, and D4 in the first measure, followed by a whole note chord of F#3, A3, and C4 in the second measure, and a whole note chord of E3, G3, and B3 in the third measure. The fourth measure contains a whole note chord of D3, F#3, and A3. The fifth measure contains a whole note chord of C3, E3, and G3. The sixth measure contains a whole note chord of B2, D3, and F#3. The seventh measure contains a whole note chord of A2, C3, and E3. The eighth measure contains a whole note chord of G2, B2, and D3. The word *dim* is written above the treble staff.

su.rit

Handwritten musical score for the second system. It consists of a treble clef staff and a bass clef staff. The treble staff begins with a treble clef and a common time signature. The first measure contains a half note G4 with a dynamic marking of *p* and an accent (>). The second measure contains a half note F#4 with a dynamic marking of *p* and an accent (>). The third measure contains a half note E4 with a dynamic marking of *p* and an accent (>). The fourth measure contains a half note D4 with a dynamic marking of *p* and an accent (>). The fifth measure contains a half note C4 with a dynamic marking of *p* and an accent (>). The sixth measure contains a half note B3 with a dynamic marking of *p* and an accent (>). The seventh measure contains a half note A3 with a dynamic marking of *p* and an accent (>). The eighth measure contains a half note G3 with a dynamic marking of *p* and an accent (>). The bass staff contains a whole note chord of G3, B3, and D4 in the first measure, followed by a whole note chord of F#3, A3, and C4 in the second measure, and a whole note chord of E3, G3, and B3 in the third measure. The fourth measure contains a whole note chord of D3, F#3, and A3. The fifth measure contains a whole note chord of C3, E3, and G3. The sixth measure contains a whole note chord of B2, D3, and F#3. The seventh measure contains a whole note chord of A2, C3, and E3. The eighth measure contains a whole note chord of G2, B2, and D3. The word *su.rit* is written above the treble staff. A wavy line is drawn at the end of the system.

2

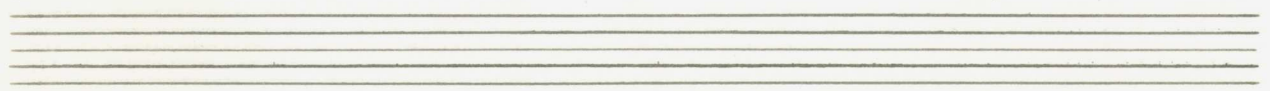
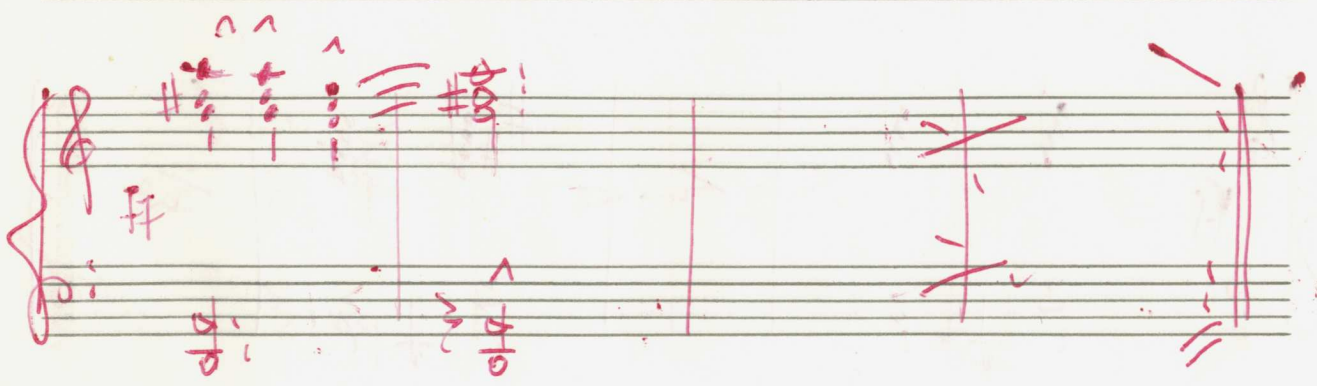
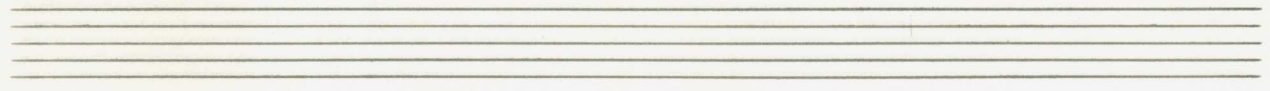
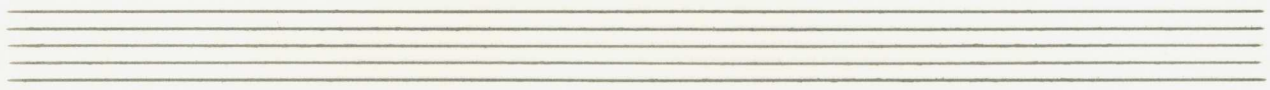
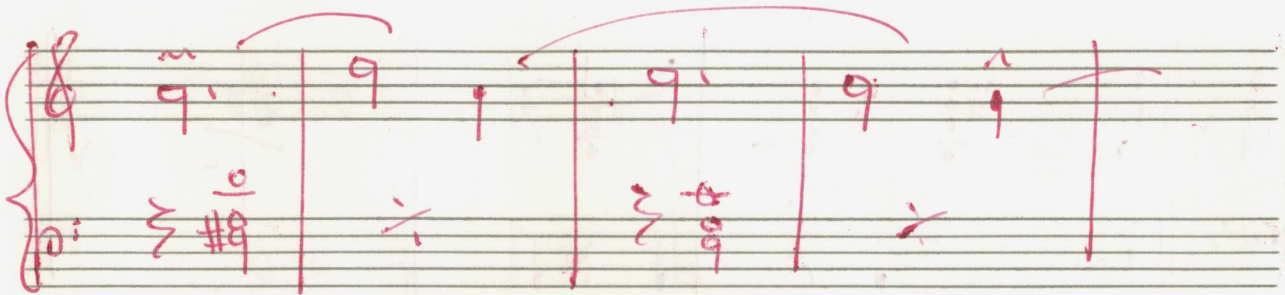
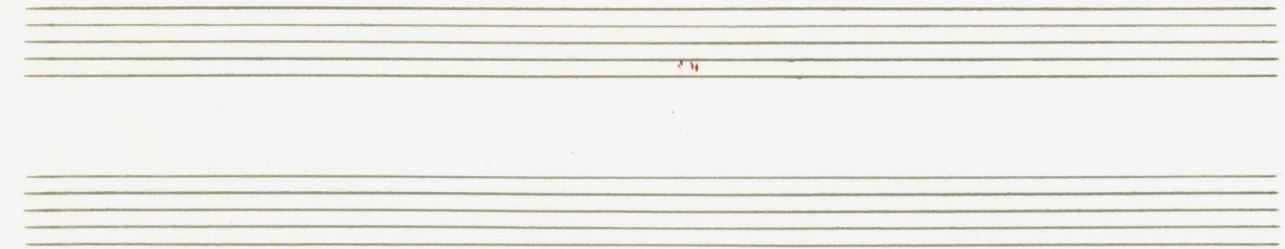
nasch

Handwritten musical notation for the first system, measures 1-4. The notation is written in red ink on a five-line staff. The first measure contains a treble clef, a forte dynamic marking 'f', and a half note G4. The second measure contains a half note A4. The third and fourth measures contain a whole note chord consisting of G4 and B4. The bass line consists of a single half note D3 in the first measure, followed by a whole note chord of D3 and F3 in the second measure, and a whole note chord of D3 and F3 in the third measure. The fourth measure contains a whole note chord of D3 and F3.

Handwritten musical notation for the second system, measures 5-8. The notation is written in red ink on a five-line staff. The first measure contains a treble clef and a half note G4. The second measure contains a half note A4. The third measure contains a half note B4. The fourth measure contains a half note G4. The fifth measure contains a half note F4. The sixth measure contains a half note E4. The seventh measure contains a half note D4. The eighth measure contains a half note C4. The bass line consists of a single half note D3 in the first measure, followed by a whole note chord of D3 and F3 in the second measure, a whole note chord of D3 and F3 in the third measure, a whole note chord of D3 and F3 in the fourth measure, a whole note chord of D3 and F3 in the fifth measure, a whole note chord of D3 and F3 in the sixth measure, a whole note chord of D3 and F3 in the seventh measure, and a whole note chord of D3 and F3 in the eighth measure.

Handwritten musical notation for the third system, measures 9-12. The notation is written in red ink on a five-line staff. The first measure contains a treble clef and a half note G4. The second measure contains a half note A4. The third measure contains a half note B4. The fourth measure contains a half note G4. The fifth measure contains a half note F4. The sixth measure contains a half note E4. The seventh measure contains a half note D4. The eighth measure contains a half note C4. The bass line consists of a single half note D3 in the first measure, followed by a whole note chord of D3 and F3 in the second measure, a whole note chord of D3 and F3 in the third measure, a whole note chord of D3 and F3 in the fourth measure, a whole note chord of D3 and F3 in the fifth measure, a whole note chord of D3 and F3 in the sixth measure, a whole note chord of D3 and F3 in the seventh measure, and a whole note chord of D3 and F3 in the eighth measure.

6



Handwritten musical notation on a grand staff. The notation is in red ink. It features a treble clef on the upper staff and a bass clef on the lower staff. The music consists of several measures with various notes, rests, and accidentals. A large red 'V' is written above the first measure. There are also some scribbles and a double bar line in the first measure.

Handwritten musical notation on a grand staff. The notation is in red ink. It features a treble clef on the upper staff and a bass clef on the lower staff. The music consists of several measures with various notes, rests, and accidentals. There are some scribbles and a double bar line in the first measure.

Handwritten musical notation on a grand staff. The notation is in red ink. It features a treble clef on the upper staff and a bass clef on the lower staff. The music consists of several measures with various notes, rests, and accidentals. There are some scribbles and a double bar line in the first measure.

Handwritten musical notation for the first system. The treble clef has a circled sharp sign (#) next to it. The bass clef has a circled sharp sign (#) next to it. The notation includes notes, accidentals, and bar lines.

Handwritten musical notation for the second system. The treble clef has a circled sharp sign (#) next to it. The bass clef has a circled sharp sign (#) next to it. The notation includes notes, accidentals, and bar lines.

Handwritten musical notation for the third system. The treble clef has a circled sharp sign (#) next to it. The bass clef has a circled sharp sign (#) next to it. The notation includes notes, accidentals, and bar lines.

1+ D. C. mit
||:||
2+ f mit ||:||
dann weiter

Gueli

Handwritten musical notation for the first system. The treble clef staff contains a series of notes with accidentals (sharps and naturals) and a slur. The bass clef staff contains notes with accidentals and a slur. The system concludes with a double bar line.

Handwritten musical notation for the second system. The treble clef staff contains notes with accidentals and a slur. The bass clef staff contains notes with accidentals and a slur. The system concludes with a double bar line.

(rit - dim)

Handwritten musical notation for the third system. The treble clef staff contains notes with accidentals and a slur. The bass clef staff contains notes with accidentals and a slur. The system concludes with a double bar line. Below the staff, the word "rit - dim" is written, followed by a crescendo hairpin and a circled "p" with an accent mark.

Handwritten musical notation in red ink on a staff. It includes a treble clef, a circled 'pp' dynamic marking, a key signature of two sharps (F# and C#), and a melodic line starting with a vertical bar line. The notation is partially obscured by a large, stylized red scribble.

3

lento

Handwritten musical notation for the first system. The treble clef part begins with a 2/4 time signature and a circled 'p' (piano) dynamic marking. The first measure contains a quarter note G4, a quarter note A4, and a quarter note B4. The second measure contains a quarter note C5, a quarter note B4, and a quarter note A4. The third measure contains a quarter note G4, a quarter note F4, and a quarter note E4. The fourth measure contains a quarter note D4, a quarter note C4, and a quarter note B3. The bass clef part contains a whole note chord of B3, D4, and F4 in the first measure, and a whole note chord of B3, D4, and F4 in the second measure. There are also some handwritten markings like 'V' and 'N' in the system.

Handwritten musical notation for the second system. The treble clef part starts with a whole note chord of G4, A4, and B4. The first measure contains a quarter note G4, a quarter note A4, and a quarter note B4. The second measure contains a quarter note C5, a quarter note B4, and a quarter note A4. The third measure contains a quarter note G4, a quarter note F4, and a quarter note E4. The fourth measure contains a quarter note D4, a quarter note C4, and a quarter note B3. The bass clef part contains a whole note chord of B3, D4, and F4 in the first measure, and a whole note chord of B3, D4, and F4 in the second measure. There are also some handwritten markings like 'V' and 'N' in the system.

Handwritten musical notation for the third system. The treble clef part starts with a whole note chord of G4, A4, and B4. The first measure contains a quarter note G4, a quarter note A4, and a quarter note B4. The second measure contains a quarter note C5, a quarter note B4, and a quarter note A4. The third measure contains a quarter note G4, a quarter note F4, and a quarter note E4. The fourth measure contains a quarter note D4, a quarter note C4, and a quarter note B3. The bass clef part contains a whole note chord of B3, D4, and F4 in the first measure, and a whole note chord of B3, D4, and F4 in the second measure. There are also some handwritten markings like 'V' and 'N' in the system.

Handwritten musical score system 1. It consists of two staves. The upper staff is a treble clef with a melodic line featuring several chords and a final eighth note. The lower staff is a bass clef with a bass line. The system is marked with a dynamic of *mf* and includes various musical notations such as slurs, ties, and accents.

Handwritten musical score system 2. It consists of two staves. The upper staff has a melodic line with a circled *f* dynamic marking and a circled *♯* symbol. The lower staff is a bass clef. The system is marked with a dynamic of *f* and includes the handwritten text "mit dir" above the upper staff. It features slurs, ties, and accents.

Handwritten musical score system 3. It consists of two staves. The upper staff is a treble clef with a melodic line. The lower staff is a bass clef. The system is marked with a dynamic of *pp* and includes the handwritten text "frei" above the upper staff. It features slurs, ties, and accents. The system concludes with a double bar line and the handwritten text "D.C. al" and a circled *♯* symbol.

Handwritten musical notation in red ink on a page with ten staves. The notation is concentrated on the second and third staves. The second staff begins with a treble clef and a circled 'D' with an accent mark. Above the staff, the words "sit dir" are written in red. The notation includes various notes, rests, and accidentals (sharps and naturals). The third staff contains a bass clef and notes. A large bracket spans across both staves. The notation concludes with a double bar line and a decorative flourish.

4

Andante

Handwritten musical notation for the first system, measures 1-2. The system consists of two staves. The upper staff is in treble clef and contains two measures of music. The first measure has a circled 'p' (piano) dynamic marking. The notes are G4, A4, B4, and C5, with a sharp sign (#) above the B4. The second measure has notes G4, A4, B4, and C5, with a sharp sign (#) above the B4. The lower staff is in bass clef and contains two measures of music. The first measure has a circled 'p' dynamic marking and a 4/4 time signature. The notes are G3, A3, B3, and C4. The second measure has notes G3, A3, B3, and C4. A large red slur covers both staves across both measures.

Handwritten musical notation for the second system, measures 3-4. The system consists of two staves. The upper staff is in treble clef and contains two measures of music. The first measure has notes G4, A4, B4, and C5, with a sharp sign (#) above the B4. The second measure has notes G4, A4, B4, and C5, with a sharp sign (#) above the B4. The lower staff is in bass clef and contains two measures of music. The first measure has notes G3, A3, B3, and C4, with a sharp sign (#) above the B3. The second measure has notes G3, A3, B3, and C4, with a sharp sign (#) above the B3. A large red slur covers both staves across both measures.

Handwritten musical notation for the third system, measures 5-6. The system consists of two staves. The upper staff is in treble clef and contains two measures of music. The first measure has notes G4, A4, B4, and C5, with a sharp sign (#) above the B4. The second measure has notes G4, A4, B4, and C5, with a sharp sign (#) above the B4. The lower staff is in bass clef and contains two measures of music. The first measure has notes G3, A3, B3, and C4. The second measure has notes G3, A3, B3, and C4. A large red slur covers both staves across both measures.

Handwritten musical notation on two staves. The top staff is in treble clef and contains several chords and melodic fragments with accidentals (sharps and naturals). The bottom staff is in bass clef and contains a few notes. There are some handwritten annotations above the staves, including a circled '77' and some symbols like '2 2 2'.

Handwritten musical notation on two staves. The top staff is in treble clef and contains a circled '77' followed by several notes and chords. The bottom staff is in bass clef and contains notes and chords. There are some handwritten annotations above the staves, including a circled '77' and some symbols like 'b' and 'd'.

Handwritten musical notation on two staves. The top staff is in treble clef and contains several chords and melodic fragments with accidentals. The bottom staff is in bass clef and contains notes and chords. There are some handwritten annotations above the staves, including a circled '77' and some symbols like 'b' and 'd'.

1 + D.C.
 2. + D.C. al
 ♪

sehr malig (rit-dim)

5

rasch

Handwritten musical notation for the first system, measures 1-4. The system consists of two staves. The first staff is in treble clef with a key signature of one sharp (F#) and a time signature of 2/4. The second staff is in bass clef. The notation includes chords, slurs, and accents. Measure 1 contains a treble clef, a circled 'F', and a circled '2/4'. Measure 2 has a treble clef with a slur over two notes and a bass clef with a single note. Measure 3 has a treble clef with a complex chord and a bass clef with a single note. Measure 4 has a treble clef with a single note and a bass clef with a single note.

Handwritten musical notation for the second system, measures 5-8. The system consists of two staves. The first staff is in treble clef with a key signature of one sharp (F#) and a time signature of 2/4. The second staff is in bass clef. The notation includes chords, slurs, and accents. Measure 5 has a treble clef with a complex chord and a bass clef with a single note. Measure 6 has a treble clef with a complex chord and a bass clef with a single note. Measure 7 has a treble clef with a complex chord and a bass clef with a single note. Measure 8 has a treble clef with a complex chord and a bass clef with a single note.

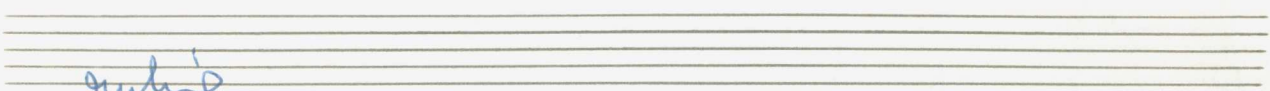
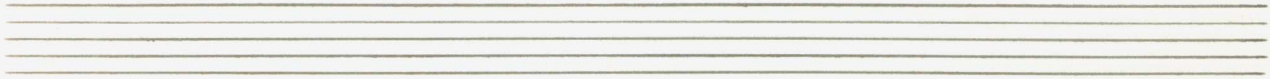
Handwritten musical notation for the third system, measures 9-12. The system consists of two staves. The first staff is in treble clef with a key signature of one sharp (F#) and a time signature of 2/4. The second staff is in bass clef. The notation includes chords, slurs, and accents. Measure 9 has a treble clef with a complex chord and a bass clef with a single note. Measure 10 has a treble clef with a complex chord and a bass clef with a single note. Measure 11 has a treble clef with a complex chord and a bass clef with a single note. Measure 12 has a treble clef with a complex chord and a bass clef with a single note.

Handwritten musical notation for the first system. The treble staff contains several chords and melodic fragments with accents (^) and slurs. The bass staff contains rhythmic patterns and chords. The system concludes with a double bar line and a fermata.

Handwritten musical notation for the second system. The treble staff begins with a circled sharp sign (#). It contains several chords and melodic lines with slurs and accents. The bass staff contains chords and rests. The system concludes with a double bar line and a fermata.

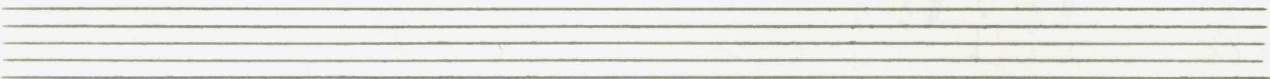
Handwritten musical notation for the third system. The treble staff features a sequence of chords and melodic lines with slurs. The bass staff contains chords and rests. The system concludes with a double bar line and a fermata.

Handwritten musical notation for the fourth system. The treble staff contains chords and melodic lines with slurs and accents. The bass staff contains chords and rests. The system concludes with a double bar line, a fermata, and a circled sharp sign (#) in the treble staff.

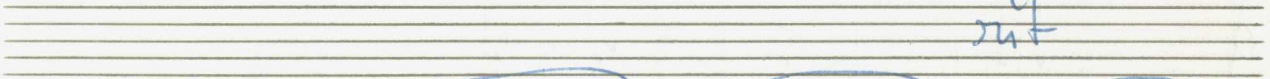


ruhig

Handwritten musical notation for the first system. It consists of a grand staff with a treble clef on the upper staff and a bass clef on the lower staff. The music is in 3/4 time, indicated by a circled '3' over a '4'. The key signature has two flats (B-flat and E-flat). The notation includes a first measure with a repeat sign, followed by two measures of music with slurs and ties. There are handwritten notes and symbols: a circled 'p' for piano, a circled '3' over a '4' for the time signature, and various chord symbols like $\sum \text{Eb} \text{ G} \text{ Bb}$ and $\text{Bb} \text{ G}$.

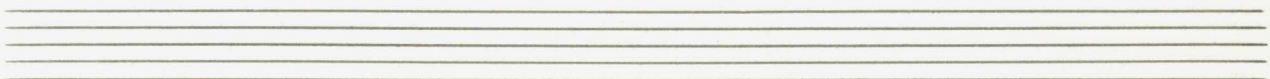
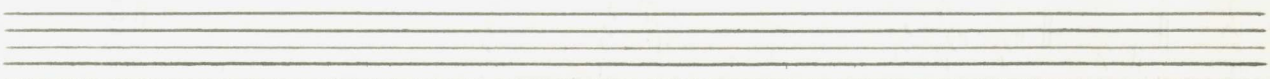


Handwritten musical notation for the second system. It consists of a grand staff with a treble clef on the upper staff and a bass clef on the lower staff. The notation includes a first measure with a repeat sign, followed by two measures of music with slurs and ties. There are handwritten notes and symbols: a circled 'p' for piano, a circled '3' over a '4' for the time signature, and various chord symbols like $\sum \text{Eb} \text{ G} \text{ Bb}$ and $\text{Bb} \text{ G}$.



ruhig

Handwritten musical notation for the third system. It consists of a grand staff with a treble clef on the upper staff and a bass clef on the lower staff. The notation includes a first measure with a repeat sign, followed by two measures of music with slurs and ties. There are handwritten notes and symbols: a circled 'p' for piano, a circled '3' over a '4' for the time signature, and various chord symbols like $\sum \text{Eb} \text{ G} \text{ Bb}$ and $\text{Bb} \text{ G}$.



brist

Handwritten musical score for the first system. It consists of two staves. The upper staff is in treble clef with a key signature of one sharp (F#) and a 4/4 time signature. The lower staff is in bass clef. The music features several chords and melodic lines with slurs and accents.

rit... (rit + obi)

Handwritten musical score for the second system. It consists of two staves. The upper staff is in treble clef. The lower staff is in bass clef. The music includes a 'rit' (ritardando) marking and a '(rit + obi)' annotation. The notation shows chords and melodic fragments with slurs.

lento

Handwritten musical score for the third system. It consists of two staves. The upper staff is in treble clef with a key signature of one flat (Bb) and a 3/4 time signature. The lower staff is in bass clef. The music is marked 'lento' and includes a 'rit > n' annotation. The notation features chords and melodic lines with slurs and accents.

D. C.
ad
Frie

6

(4x)

Prestissimo

Handwritten musical notation for the first system. It consists of two staves. The left staff is in treble clef with a 2/4 time signature and a circled *pp* dynamic marking. The right staff is in bass clef. The music features a four-measure phrase with a slur over the first two measures and a fermata over the last two. The notes in the first measure are $\sharp a$, $\sharp g$, $\sharp f$, and $\sharp e$. The bass line starts with a whole rest, followed by notes $\sharp g$, $\sharp g$, and $\sharp g$ in the subsequent measures.

Handwritten musical notation for the second system, similar to the first. The left staff has a \lessgtr dynamic marking. The notes in the first measure are $\sharp a$, $\sharp g$, $\sharp f$, and $\sharp e$. The bass line features notes $\sharp g$, $\sharp g$, and $\sharp g$ in the second, third, and fourth measures respectively.

Handwritten musical notation for the third system. The left staff has a *mf* dynamic marking. The notes in the first measure are $\flat g$, $\flat f$, $\flat e$, and $\flat d$. The bass line features notes $\flat g$, $\flat g$, and $\flat g$ in the second, third, and fourth measures respectively.

Handwritten musical notation for the first system. It consists of two staves. The upper staff is in treble clef and contains a series of notes with sharp signs, some of which are crossed out. The lower staff is in bass clef and contains a few notes, including a sharp sign. A circled 'p' is written on the left side of the first measure. A large blue bracket spans across both staves.

Handwritten musical notation for the second system. It consists of two staves. The upper staff has notes with sharp signs. The lower staff has notes with sharp signs and some notes with stems pointing downwards. Dynamic markings include a circled 'f' on the left, a circled 'f' in the middle, and a circled 'p' on the right. A large blue bracket spans across both staves.

Handwritten musical notation for the third system. It consists of two staves. The upper staff has notes with sharp signs. The lower staff has notes with sharp signs and some notes with stems pointing downwards. Dynamic markings include 'pp' on the left and 'ppp' on the right. A large blue bracket spans across both staves.

Handwritten musical notation for the fourth system. It consists of two staves. The upper staff has notes with sharp signs. The lower staff has notes with sharp signs and some notes with stems pointing downwards. A circled 'ppp' is written on the left side. A large blue scribble is at the end of the system. A large blue bracket spans across both staves.

7

breit (frei)

Mod. (Schubert)

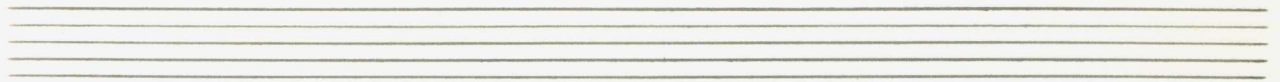
Handwritten musical notation for the first system, featuring a treble and bass clef with various notes and rests.

Handwritten musical notation for the second system, showing a treble and bass clef with notes and rests.

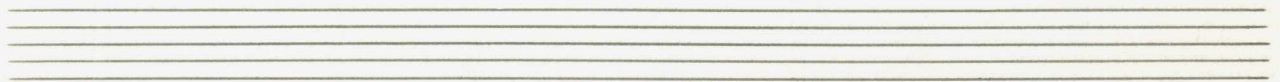
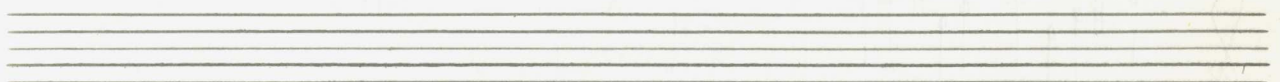
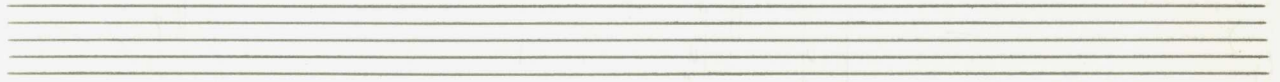
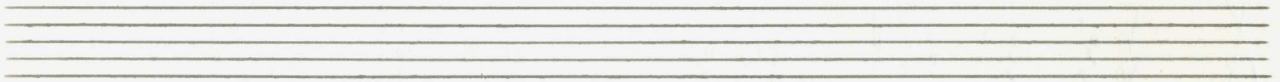
Handwritten musical notation for the third system, including a treble and bass clef with notes and rests.

Handwritten musical notation for the fourth system, featuring a treble and bass clef with notes and rests.

Handwritten musical notation for the fifth system, including a treble and bass clef with notes and rests.



gut + dein



Handwritten musical notation on two staves. The top staff is in treble clef and contains notes with accidentals (sharps) and dynamic markings like '> f >'. The bottom staff is in bass clef and contains notes with accidentals and a circled 'p' marking.

Handwritten musical notation on two staves. The top staff is in treble clef and contains notes with accidentals and a circled 'pp' marking. The bottom staff is in bass clef and contains notes with accidentals.

Handwritten musical notation on two staves. The top staff is in treble clef and contains notes with accidentals and a circled 'ppp' marking. The bottom staff is in bass clef and contains notes with accidentals and a large, sweeping blue line.