

Übungen im
alten Stil

Wien 1959

Adolf Scherbaum
Klavier (oder Cembalo)
(Orgel)

ruhig

Allegro

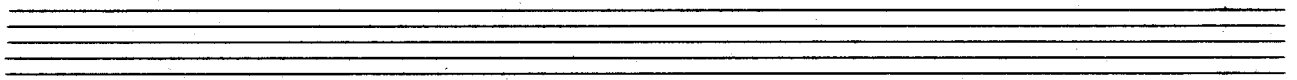
3*

Handwritten musical notation for the first system. The treble staff contains a melody of eighth notes with slurs and accents, and the bass staff contains a simple accompaniment of quarter notes. The time signature is 6/4 and the key signature has one sharp (F#).

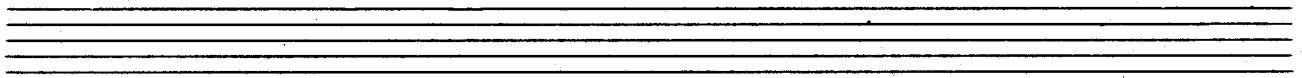
Handwritten musical notation for the second system, continuing the piece with similar melodic and harmonic patterns in the treble and bass staves.

Handwritten musical notation for the third system, showing further development of the musical themes in the treble and bass staves.

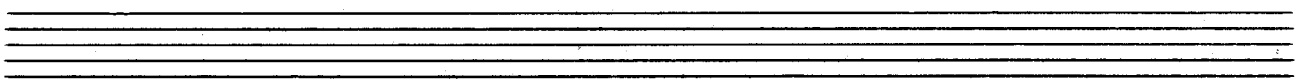
Handwritten musical notation for the first system, featuring a treble and bass staff with a melodic line and accompaniment.



Handwritten musical notation for the second system, continuing the melodic and accompaniment lines.

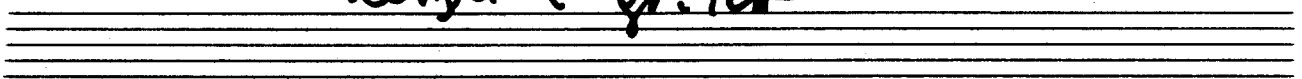


Handwritten musical notation for the third system, showing further development of the musical themes.



Handwritten musical notation for the fourth system, including a triplet marking and a fermata.

lehigh + ex. 12.



5

Allegro (ang.)

2x

Handwritten musical notation for the first system. The treble clef staff contains a series of eighth notes with stems pointing up, grouped in pairs. The bass clef staff contains a series of eighth notes with stems pointing down, also grouped in pairs. The key signature has one flat (B-flat), and the time signature is 6/8. The system ends with a double bar line.

Handwritten musical notation for the second system. The treble clef staff contains a series of eighth notes with stems pointing up, grouped in pairs. The bass clef staff contains a series of eighth notes with stems pointing down, also grouped in pairs. The key signature has one flat (B-flat), and the time signature is 6/8. The system ends with a double bar line.

Handwritten musical notation for the third system. The treble clef staff contains a series of eighth notes with stems pointing up, grouped in pairs. The bass clef staff contains a series of eighth notes with stems pointing down, also grouped in pairs. The key signature has one flat (B-flat), and the time signature is 6/8. The system ends with a double bar line.

lebste + grüß

prest

Handwritten musical notation for the first system. The treble clef staff contains two measures of music, each starting with a quarter rest followed by a quarter note. The notes are G4 (with a sharp sign), A4 (with a sharp sign), and B4 (with a sharp sign). The bass clef staff contains two measures of music, each starting with a quarter rest followed by a quarter note. The notes are G3 (with a sharp sign), A3 (with a sharp sign), and B3 (with a sharp sign). There are additional markings above the notes, possibly indicating fingerings or dynamics.

Handwritten musical notation for the second system. The treble clef staff contains three measures of music, each starting with a quarter rest followed by a quarter note. The notes are G4 (with a sharp sign), A4 (with a sharp sign), and B4 (with a sharp sign). The bass clef staff contains three measures of music, each starting with a quarter rest followed by a quarter note. The notes are G3 (with a sharp sign), A3 (with a sharp sign), and B3 (with a sharp sign). There are additional markings above the notes, possibly indicating fingerings or dynamics.

Handwritten musical notation for the third system. The treble clef staff contains two measures of music, each starting with a quarter rest followed by a quarter note. The notes are G4 (with a sharp sign), A4 (with a sharp sign), and B4 (with a sharp sign). The bass clef staff contains two measures of music, each starting with a quarter rest followed by a quarter note. The notes are G3 (with a sharp sign), A3 (with a sharp sign), and B3 (with a sharp sign). There are additional markings above the notes, possibly indicating fingerings or dynamics.

Handwritten musical notation for the first system. The treble staff contains a complex rhythmic pattern with many beamed notes and accidentals (sharps and naturals). The bass staff has a few notes, including a sharp sign.

Handwritten musical notation for the second system. The treble staff has a 'dim' marking above it. The bass staff has a sharp sign. The notation is dense with notes and accidentals.

Handwritten musical notation for the third system. It begins with a 'fin' marking. The notation is very dense with many notes and accidentals. A 'fcis' marking is present at the end of the system.

Handwritten musical notation for the fourth system. It ends with the instruction 'D.C. al Fine' and a double bar line. The notation is dense with notes and accidentals.

ruhig

Handwritten musical notation for the first system, featuring a treble and bass clef, a key signature of one sharp (F#), and a 3/8 time signature. The melody is marked with a long slur. The bass line consists of chords and single notes.

Handwritten musical notation for the second system, continuing the piece with similar notation and phrasing.

Handwritten musical notation for the third system, showing more complex melodic lines and harmonic support.

Handwritten musical notation for the fourth system, concluding the piece with a final cadence.

Handwritten musical notation for the first system, consisting of two staves. The upper staff has a treble clef and a wavy hairpin-like marking above the first few notes. The lower staff has a bass clef. The music is in a key with one sharp (F#) and a common time signature.

Handwritten musical notation for the second system, consisting of two staves. The upper staff has a treble clef and a wavy hairpin-like marking above the first few notes. The lower staff has a bass clef. The music is in a key with one sharp (F#) and a common time signature.

(letz(e) + rit)

Fine

Handwritten musical notation for the third system, consisting of two staves. The upper staff has a treble clef and a wavy hairpin-like marking above the first few notes. The lower staff has a bass clef. The music is in a key with one sharp (F#) and a common time signature.

Handwritten musical notation for the fourth system, consisting of two staves. The upper staff has a treble clef and a wavy hairpin-like marking above the first few notes. The lower staff has a bass clef. The music is in a key with one sharp (F#) and a common time signature.

Handwritten musical notation for the fifth system, consisting of two staves. The upper staff has a treble clef and a wavy hairpin-like marking above the first few notes. The lower staff has a bass clef. The music is in a key with one sharp (F#) and a common time signature.

D. C.
al Fine

Allegro

3x

Handwritten musical notation for the first system. It consists of two staves: a treble clef staff and a bass clef staff. The treble staff begins with a treble clef, a 3/4 time signature, and a dynamic marking of *mf*. The first measure contains a half note G4 with a slur over it. The second measure contains a half note A4 with a slur over it. The third measure contains a half note B4 with a slur over it. The fourth measure contains a half note C5 with a slur over it. The bass staff contains a whole rest in the first measure, followed by a half note G3 in the second measure, a half note F3 in the third measure, and a half note E3 in the fourth measure.

Handwritten musical notation for the second system. It consists of two staves: a treble clef staff and a bass clef staff. The treble staff begins with a treble clef. The first measure contains a half note G4 with a slur over it. The second measure contains a half note A4 with a slur over it. The third measure contains a half note B4 with a slur over it. The fourth measure contains a half note C5 with a slur over it. The bass staff contains a whole rest in the first measure, followed by a half note G3 in the second measure, a half note F3 in the third measure, and a half note E3 in the fourth measure.

Handwritten musical notation for the third system. It consists of two staves: a treble clef staff and a bass clef staff. The treble staff begins with a treble clef. The first measure contains a half note G4 with a slur over it. The second measure contains a half note A4 with a slur over it. The third measure contains a half note B4 with a slur over it. The fourth measure contains a half note C5 with a slur over it. The bass staff contains a whole rest in the first measure, followed by a half note G3 in the second measure, a half note F3 in the third measure, and a half note E3 in the fourth measure.

Handwritten musical notation for the fourth system. It consists of two staves: a treble clef staff and a bass clef staff. The treble staff begins with a treble clef. The first measure contains a half note G4 with a slur over it. The second measure contains a half note A4 with a slur over it. The third measure contains a half note B4 with a slur over it. The fourth measure contains a half note C5 with a slur over it. The bass staff contains a whole rest in the first measure, followed by a half note G3 in the second measure, a half note F3 in the third measure, and a half note E3 in the fourth measure.

letztes mit

Fin

d. G.

al.

Fin

Andante (6/8)

Handwritten musical notation for the first system, measures 1-3. The music is in 6/8 time. The treble clef staff contains chords with stems pointing down, and the bass clef staff contains a bass line with stems pointing down. Measure 1 has a circled '1' above the bass line. Measure 2 has a sharp sign above the treble staff. Measure 3 has a sharp sign above the treble staff.

Handwritten musical notation for the second system, measures 4-6. The music continues in 6/8 time. Measure 4 has a sharp sign above the treble staff. Measure 5 has a sharp sign above the treble staff. Measure 6 has a sharp sign above the treble staff.

Handwritten musical notation for the third system, measures 7-9. The music continues in 6/8 time. Measure 7 has a plus sign above the treble staff. Measure 8 has a plus sign above the treble staff. Measure 9 has a plus sign above the treble staff.

Handwritten musical notation for the fourth system, measures 10-12. The music continues in 6/8 time. Measure 10 has a plus sign above the treble staff. Measure 11 has a plus sign above the treble staff. Measure 12 has a plus sign above the treble staff. The system ends with a double bar line and repeat dots. Above the system, the handwritten text "letzte + mit FIN" is written.

17

Allegro Moderato 3x

Handwritten musical notation for the first system. It consists of two staves. The top staff is in treble clef and the bottom staff is in bass clef. The time signature is 4/4. The key signature has one sharp (F#). The first measure of the top staff starts with a fermata over a quarter note, followed by a series of eighth notes. The second measure of the top staff has a quarter note with a sharp sign above it, followed by a half note. The bottom staff has a whole rest in the first measure, followed by a series of eighth notes in the second measure. A dynamic marking 'f' is present in the first measure of the bottom staff.

Handwritten musical notation for the second system. It consists of two staves. The top staff is in treble clef and the bottom staff is in bass clef. The time signature is 4/4. The key signature has one sharp (F#). The first measure of the top staff has a quarter note with a sharp sign above it, followed by a half note. The second measure of the top staff has a quarter note with a sharp sign above it, followed by a half note. The bottom staff has a quarter note with a sharp sign above it, followed by a half note. There are some handwritten annotations above the notes, possibly indicating phrasing or dynamics.

Handwritten musical notation for the third system. It consists of two staves. The top staff is in treble clef and the bottom staff is in bass clef. The time signature is 4/4. The key signature has one sharp (F#). The first measure of the top staff has a quarter note with a sharp sign above it, followed by a half note. The second measure of the top staff has a quarter note with a sharp sign above it, followed by a half note. The bottom staff has a quarter note with a sharp sign above it, followed by a half note. There are some handwritten annotations above the notes, possibly indicating phrasing or dynamics.

letzte + gut Ein

Handwritten musical notation for the fourth system. It consists of two staves. The top staff is in treble clef and the bottom staff is in bass clef. The time signature is 4/4. The key signature has one sharp (F#). The first measure of the top staff has a quarter note with a sharp sign above it, followed by a half note. The second measure of the top staff has a quarter note with a sharp sign above it, followed by a half note. The bottom staff has a quarter note with a sharp sign above it, followed by a half note. The system ends with a double bar line and a fermata over the final note. The text 'letzte + gut Ein' is written above the staff.

1P

Adagio

anf 4(8)

Handwritten musical notation for the first system. It consists of a treble staff and a bass staff. The treble staff begins with a treble clef, a 4/8 time signature, and a key signature of one flat (B-flat). The music is written in a single melodic line with various rhythmic values and accidentals. A large slur covers the entire system. The bass staff contains a few notes, including a B-flat. A dynamic marking of *ff* is written below the bass staff.

Handwritten musical notation for the second system. It consists of a treble staff and a bass staff. The treble staff continues the melodic line from the first system. The bass staff provides harmonic support with chords and moving lines. A large slur covers the entire system.

Handwritten musical notation for the third system. It consists of a treble staff and a bass staff. The treble staff continues the melodic line. The bass staff continues with harmonic support. A large slur covers the entire system.

letzte + ev. mit

Handwritten musical notation for the fourth system. It consists of a treble staff and a bass staff. The treble staff continues the melodic line. The bass staff concludes with a final chord. A large slur covers the entire system. The word *Fin.* is written at the end of the system.

21

Allegretto

Handwritten musical notation for the first system, featuring a treble clef, a bass clef, and a 4/8 time signature. The notation includes a melodic line in the treble clef and a bass line in the bass clef, with various notes and rests.

Handwritten musical notation for the second system, continuing the melodic and bass lines from the first system.

Handwritten musical notation for the third system, continuing the melodic and bass lines from the second system.

Handwritten musical notation for the fourth system, continuing the melodic and bass lines from the third system.

Handwritten musical score for a piece in G major, featuring six systems of staves with treble and bass clefs. The score includes various musical notations such as triplets, slurs, and a circled 'FIN' marking. The piece concludes with a double bar line and the instruction 'D.C. al Fine'.

Allegro

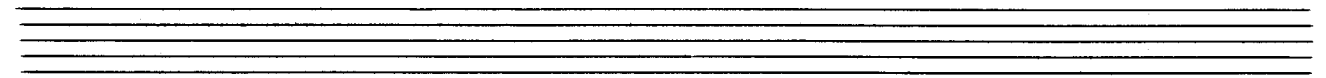
Handwritten musical notation for the first system, measures 1-4. The music is in 3/8 time, with a treble clef and a common time signature of 8. The melody consists of eighth-note runs in the right hand, and the bass line consists of quarter notes in the left hand.

Handwritten musical notation for the second system, measures 5-8. The melody continues with eighth-note runs in the right hand, and the bass line consists of quarter notes in the left hand.

Handwritten musical notation for the third system, measures 9-12. The melody continues with eighth-note runs in the right hand, and the bass line consists of quarter notes in the left hand. A double bar line is present at the end of measure 10.

Handwritten musical notation for the fourth system, measures 13-16. The melody continues with eighth-note runs in the right hand, and the bass line consists of quarter notes in the left hand. The key signature changes to one sharp (F#) starting in measure 13.

Handwritten musical notation for the fifth system, measures 17-20. The melody continues with eighth-note runs in the right hand, and the bass line consists of quarter notes in the left hand. The key signature remains one sharp (F#).



Handwritten musical notation, first system. Treble clef, key signature of one sharp (F#), 2/4 time signature. The right hand plays a series of eighth-note chords, and the left hand plays a simple bass line.

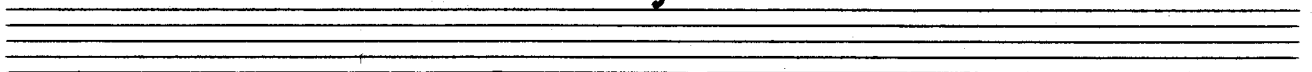
Handwritten musical notation, second system. Treble clef, key signature of one sharp (F#), 2/4 time signature. The right hand plays a series of eighth-note chords, and the left hand plays a simple bass line.

Handwritten musical notation, third system. Treble clef, key signature of one sharp (F#), 2/4 time signature. The right hand plays a series of eighth-note chords, and the left hand plays a simple bass line.

Handwritten musical notation, fourth system. Treble clef, key signature of one sharp (F#), 2/4 time signature. The right hand plays a series of eighth-note chords, and the left hand plays a simple bass line.

Handwritten musical notation, fifth system. Treble clef, key signature of one sharp (F#), 2/4 time signature. The right hand plays a series of eighth-note chords, and the left hand plays a simple bass line. The system ends with a fermata and the word "Fine" written to the right.

letzte x vier .



Presto

3x

The image shows a handwritten musical score for guitar, consisting of five systems of two staves each. The notation is dense and includes various chords and melodic lines. The first system starts with a treble clef and a key signature of one sharp (F#). The second system has a treble clef and a key signature of two sharps (F# and C#). The third system has a treble clef and a key signature of two sharps (F# and C#). The fourth system has a treble clef and a key signature of one flat (Bb). The fifth system has a treble clef and a key signature of one flat (Bb). The notation includes many chords, some with accidentals, and some melodic lines with accidentals. The score is written in a clear, legible hand.

breit (passionato)

Handwritten musical notation on a grand staff. The left hand has a few notes, and the right hand has a complex, dense passage of notes. A double bar line is present, with the word "FIN" written above it.

Handwritten musical notation on a grand staff. The right hand continues with a complex, dense passage of notes, while the left hand has a few notes.

Handwritten musical notation on a grand staff. The right hand continues with a complex, dense passage of notes, while the left hand has a few notes.

Handwritten musical notation on a grand staff. The left hand has a few notes, and the right hand has a complex, dense passage of notes. A double bar line is present, with the word "ad Fin" written below it.