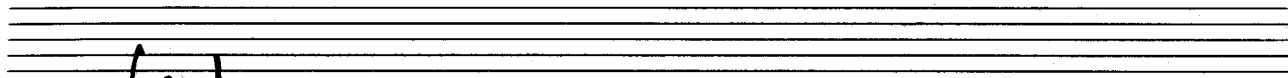
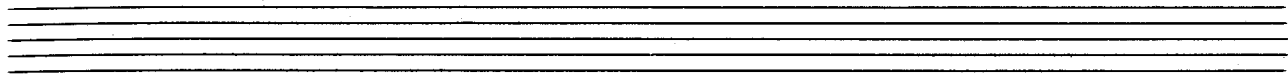


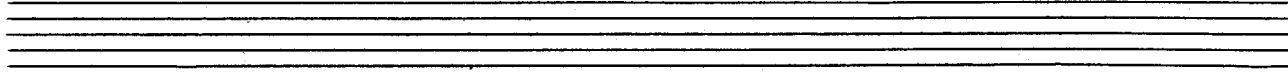
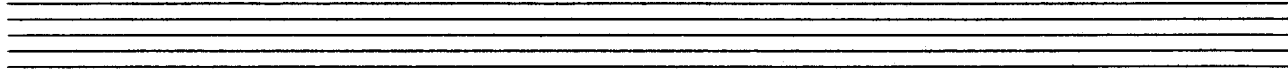
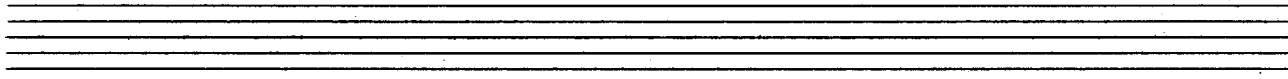
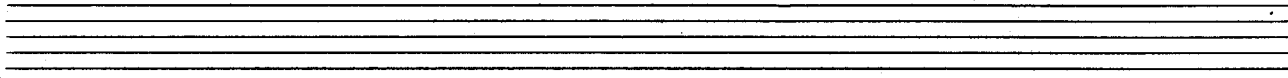
12 Stücke (Übungen)  
im alten Stil  
für Klavier (Cembalo)

Wien 1959

A. Scherbaum



*lento*



Handwritten musical notation for the first system. The treble staff contains a melodic line with eighth and sixteenth notes, while the bass staff provides a simple accompaniment with quarter notes. A long slur covers both staves across the first two measures.

Handwritten musical notation for the second system. The treble staff continues the melodic line with eighth notes, and the bass staff continues with quarter notes. A long slur covers both staves across the first two measures.

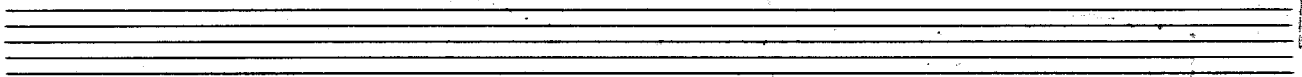
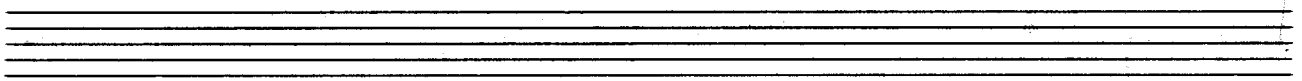
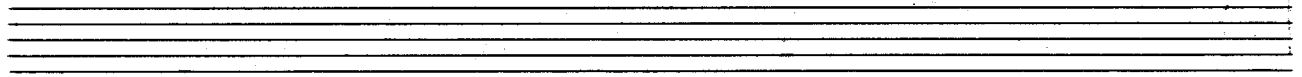
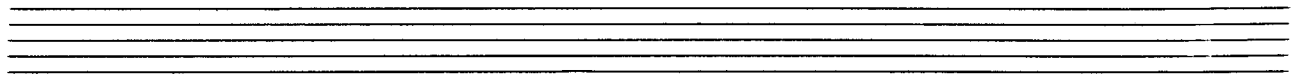
Handwritten musical notation for the third system. The treble staff continues the melodic line, and the bass staff continues with quarter notes. The system ends with a double bar line. Below the bass staff, the handwritten text "(Ztet rit...)" is written.

Four empty musical staves, consisting of two treble and two bass staves, arranged vertically.

3

3+

*Presto*



breit

Handwritten musical notation for the first system. The treble clef staff contains a series of notes with various accidentals (sharps and naturals) and rests, some with wavy lines above them. The bass clef staff contains notes with accidentals and rests. The key signature has one sharp (F#).

Handwritten musical notation for the second system. The treble clef staff continues with notes and rests, including wavy lines. The bass clef staff continues with notes and rests. The key signature remains one sharp.

Handwritten musical notation for the third system. The treble clef staff ends with a double bar line and the word "FIN" written above it. The bass clef staff continues with notes and rests. The key signature remains one sharp.



Allegretto (Andante)

Handwritten musical notation for the first system. It consists of a treble clef staff and a bass clef staff. The treble staff begins with a piano (p) dynamic marking. The music is written in a simple, rhythmic style with eighth and sixteenth notes, some beamed together. The bass staff contains mostly whole and half notes, providing a harmonic accompaniment. A long slur covers the entire system.

Handwritten musical notation for the second system. It continues the piece with similar notation to the first system, featuring a treble and bass clef with notes and rests. The treble staff has a piano (p) dynamic marking. The music is written in a simple, rhythmic style with eighth and sixteenth notes, some beamed together. The bass staff contains mostly whole and half notes, providing a harmonic accompaniment. A long slur covers the entire system.

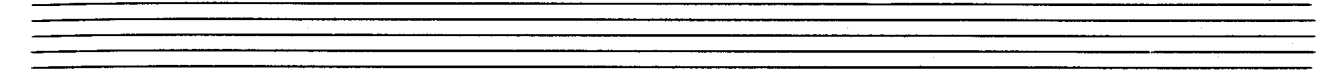
Handwritten musical notation for the third system. It continues the piece with similar notation to the first system, featuring a treble and bass clef with notes and rests. The treble staff has a piano (p) dynamic marking. The music is written in a simple, rhythmic style with eighth and sixteenth notes, some beamed together. The bass staff contains mostly whole and half notes, providing a harmonic accompaniment. A long slur covers the entire system. The system ends with a fermata over the final note in the treble staff and a flourish in the bass staff.

Handwritten musical notation for the first system. It consists of two staves. The upper staff is in treble clef and contains a melodic line with several notes, including a sharp sign. The lower staff is in bass clef and contains a bass line with notes and a sharp sign. A large bracket spans across both staves, and a circled cross symbol is positioned above the first measure.

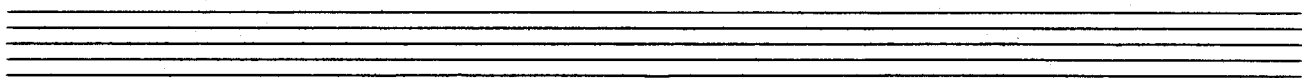
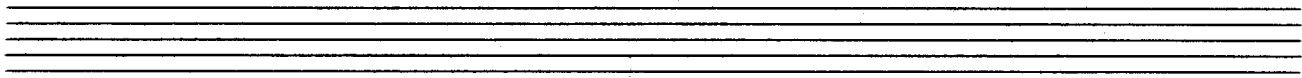
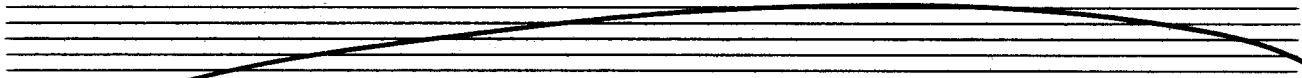
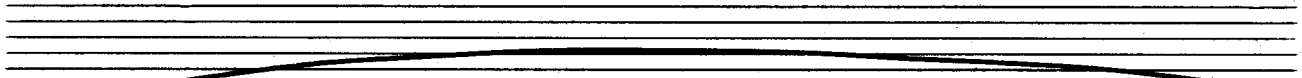
Handwritten musical notation for the second system. It consists of two staves. The upper staff is in treble clef and features a complex rhythmic pattern with many notes. The lower staff is in bass clef and contains a bass line with notes and a sharp sign. A large bracket spans across both staves.

Handwritten musical notation for the third system. It consists of two staves. The upper staff is in treble clef and contains a melodic line with notes and accidentals. The lower staff is in bass clef and contains a bass line with notes and accidentals. A large bracket spans across both staves.

Handwritten musical notation for the fourth system. It consists of two staves. The upper staff is in treble clef and contains a melodic line with notes and accidentals. The lower staff is in bass clef and contains a bass line with notes and accidentals. A circled cross symbol is positioned above the first measure. The word "Fine" is written in the right margin. Below the staves, there are handwritten notes: "D.C. al Fine" and a question mark.



*Presto* 4x

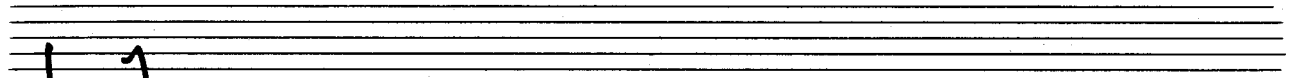
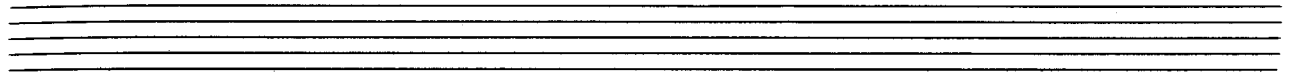


Handwritten musical notation for the first system. The treble staff contains a melodic line with a slur over the first four measures. The bass staff provides a harmonic accompaniment with chords and moving lines.

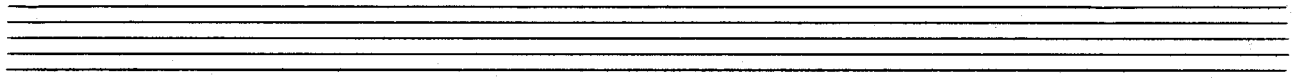
Handwritten musical notation for the second system. The treble staff continues the melodic line with a slur. The bass staff continues the accompaniment.

Handwritten musical notation for the third system. The treble staff features a melodic line with a slur. The bass staff continues the accompaniment.

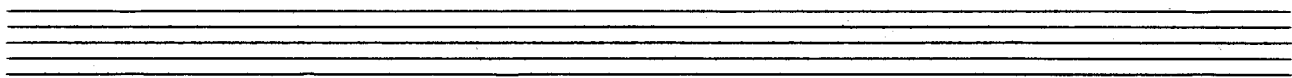
Handwritten musical notation for the fourth system. The treble staff features a melodic line with a slur. The bass staff continues the accompaniment. The system concludes with a double bar line and a fermata over the final notes.



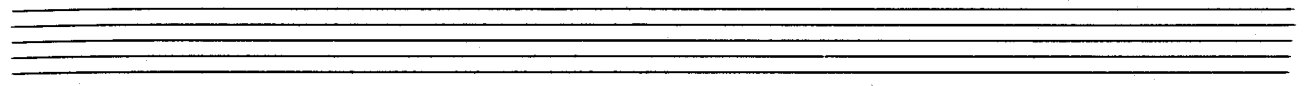
*breit*



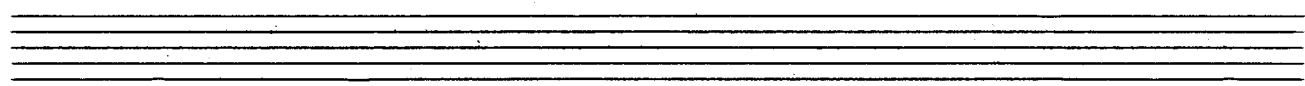
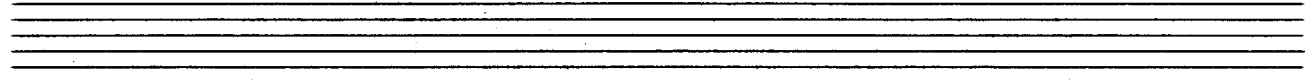
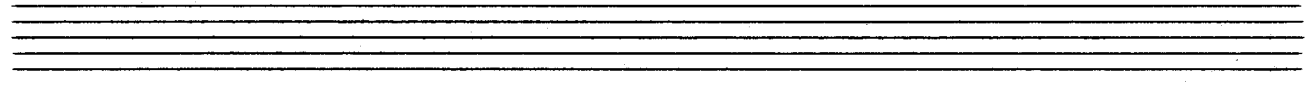
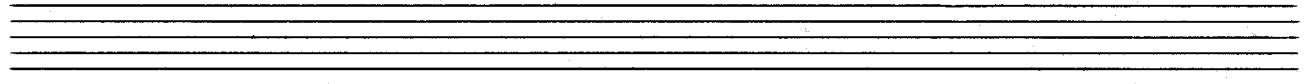
(letzte + ev. mit)



13



*Allegro* 3+



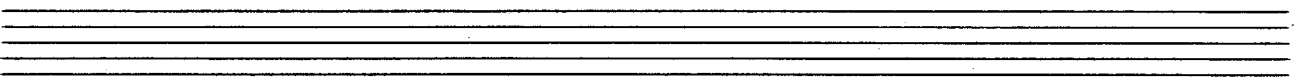
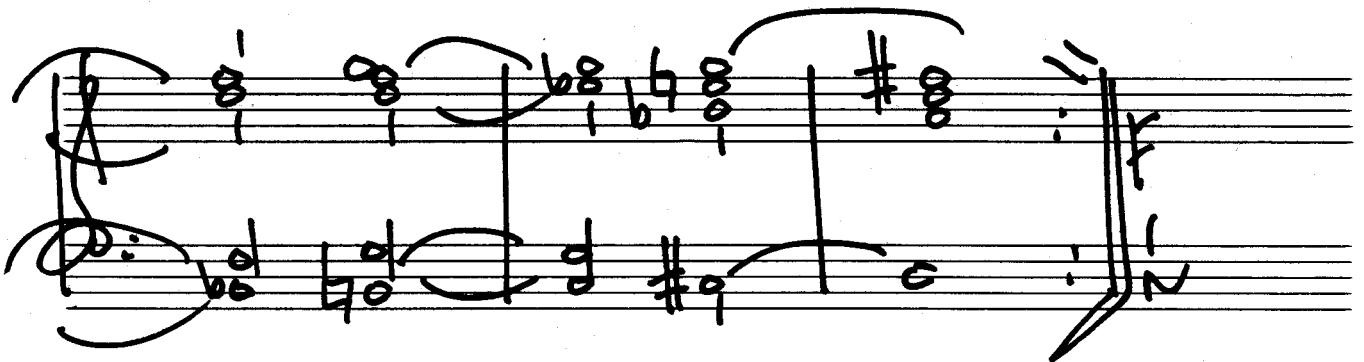
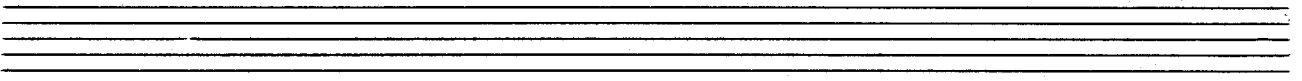
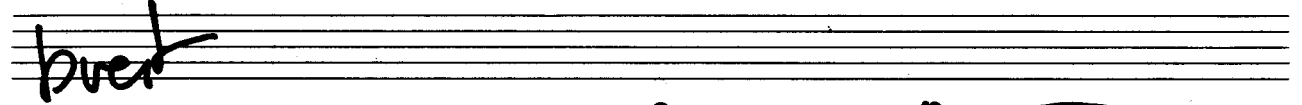
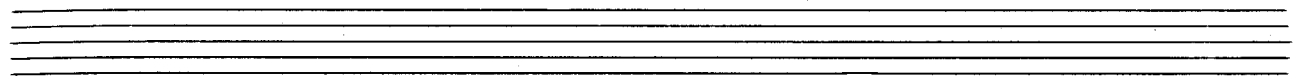
Handwritten musical notation for the first system, featuring a treble and bass staff with notes and fingerings.

Handwritten musical notation for the second system, including a bracketed measure with the number "1+2+3" above it.

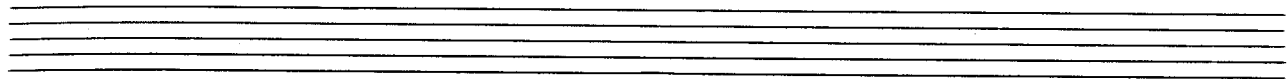
Handwritten musical notation for the third system, with the word "git." written below the staff.

Handwritten musical notation for the fourth system, ending with a wavy line.

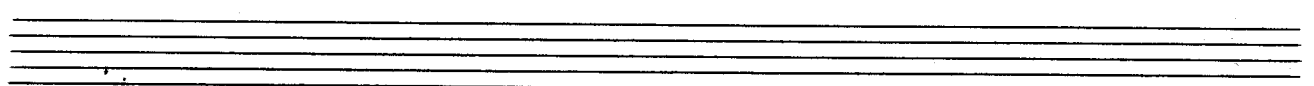
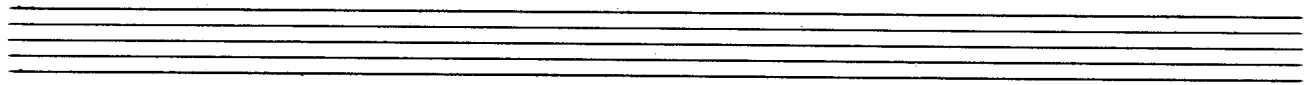
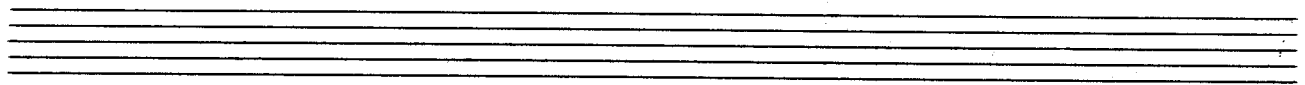
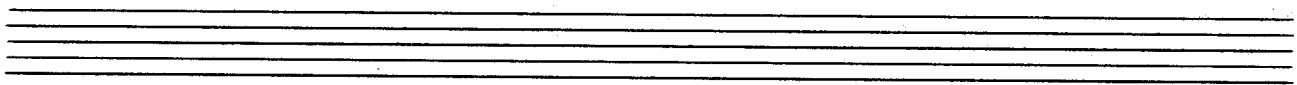
15







*sehr ruhig*

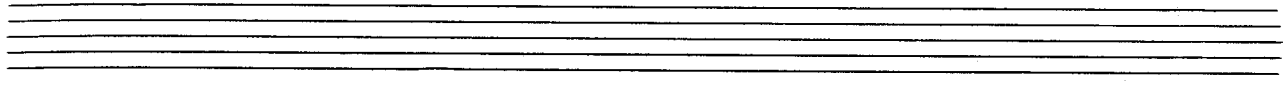


Handwritten musical notation for the first system. The treble clef staff contains a series of notes with a sharp sign, some beamed together, and a fermata. The bass clef staff contains a few notes and rests. The system concludes with a double bar line and a fermata.

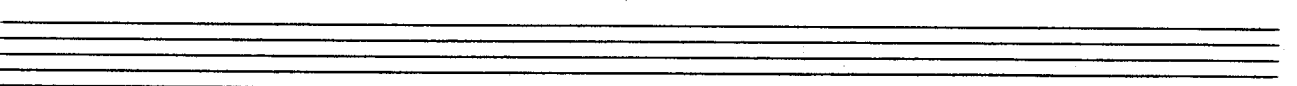
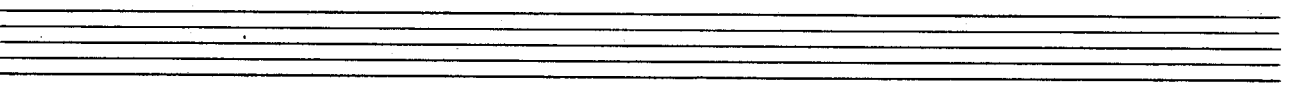
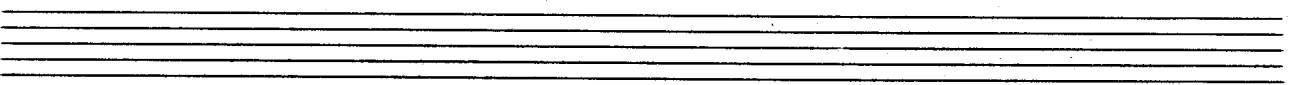
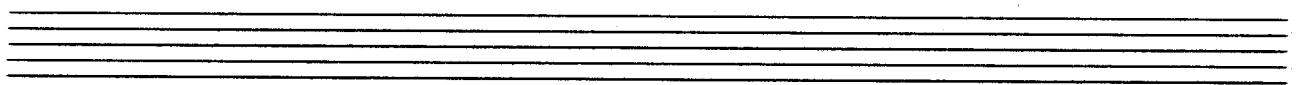
Handwritten musical notation for the second system. The treble clef staff features a rhythmic pattern of notes with stems pointing downwards, some beamed together. The bass clef staff contains a few notes and rests. The system concludes with a double bar line and a fermata.

Handwritten musical notation for the third system. The treble clef staff contains notes with a flat sign, some beamed together. The bass clef staff contains notes and rests. The system concludes with a double bar line and a fermata.

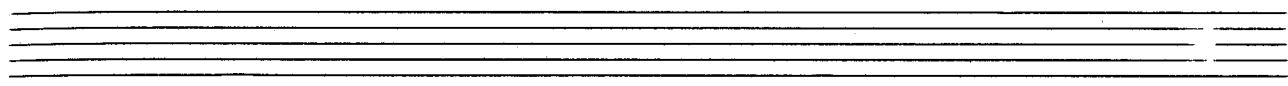
Handwritten musical notation for the fourth system. The treble clef staff contains notes with a flat sign, some beamed together, and a fermata. The bass clef staff contains notes and rests. The system concludes with a double bar line, a fermata, and the word "Fine" written above the staff. The initials "p.c." are written below the staff.



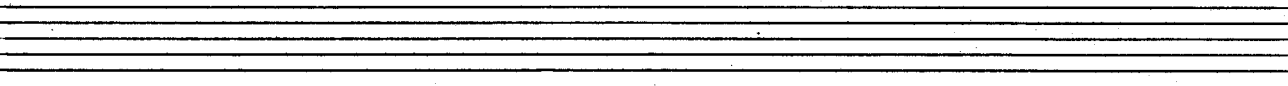
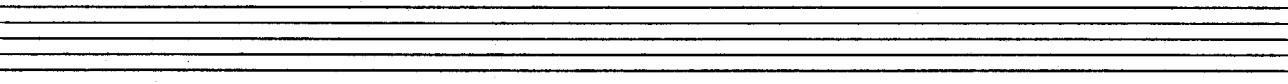
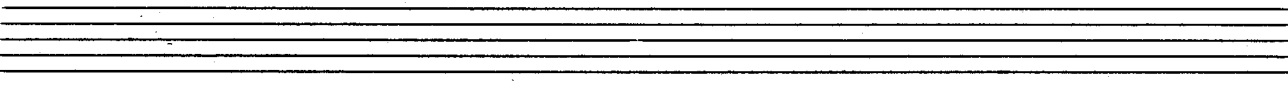
*ranch* 3+







*breit*

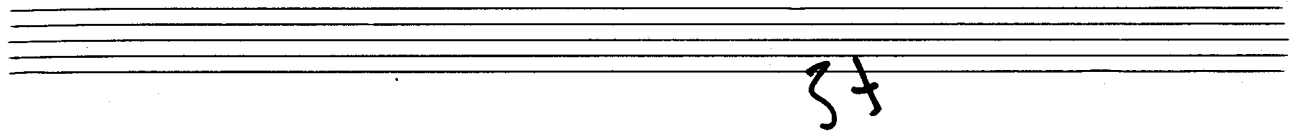


letzte + rid.

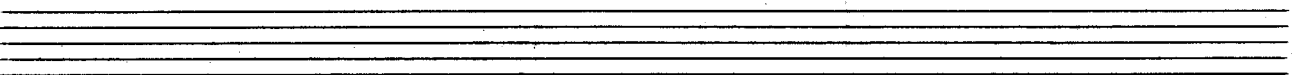
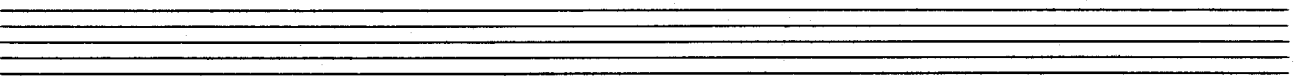
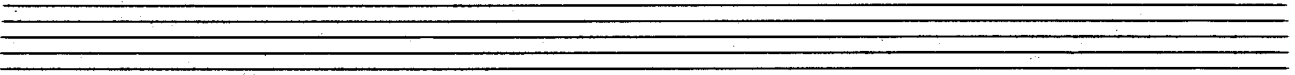
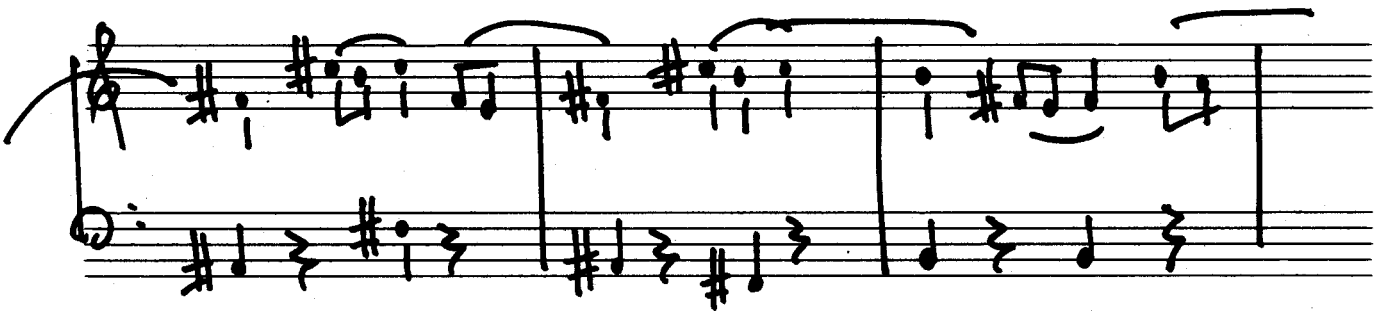
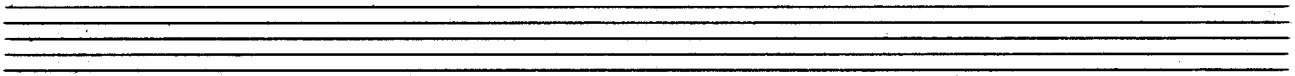
Fin

D.C.  
Fin

23



Ruhig Anschl. (Moderato)



lebhaft + ev. mit

*Presto* oder  
Mod.

letzte er. mit

D. c. mit ff:)  
bis hien-her dan D. c. od. Fu.

Handwritten musical notation for measures 1-10. The first system consists of two staves. The upper staff is in treble clef with a key signature of one flat (B-flat). Measures 1-10 are numbered above the staff. The lower staff is in bass clef. The music consists of chords and some melodic fragments.

Handwritten musical notation for measures 11-12. The first system consists of two staves. The upper staff is in treble clef with a key signature of one flat. Measures 11-12 are numbered above the staff. The lower staff is in bass clef. The music consists of chords.

Handwritten musical notation for measures 1-12. The first system consists of two staves. The upper staff is in treble clef with a key signature of one flat. Measures 1-12 are numbered above the staff. The lower staff is in bass clef. The music consists of a melodic line in the upper staff and a bass line in the lower staff.

Four empty musical staves.