

Übungen im alten
Stil für Orgel
Wien 1959

Notenheft

Hücke im alten Stil

für Orgel 1959

Handwritten musical score for the first system. It consists of two staves. The upper staff is in treble clef with a 4/4 time signature. The tempo marking "Lento" is written above the first measure. The music features a melodic line with slurs and a fermata over the final measure, and a bass line with a fermata. A dynamic marking of pp is present. A handwritten ∞ symbol is above the second measure of the upper staff.

Handwritten musical score for the second system, consisting of two staves. The upper staff continues the melodic line with slurs and a fermata, ending with a dynamic marking of p . A handwritten ∞ symbol is above the final measure. The lower staff continues the bass line with a fermata.

Handwritten musical score for the third system, consisting of two staves. The upper staff continues the melodic line with slurs and a fermata. The lower staff continues the bass line with slurs and a fermata. A handwritten ∞ symbol is above the first measure of the upper staff.

Zeit + ev. rit.

lento

Handwritten musical notation for the first system. It features a treble and bass clef, a 4/4 time signature, and a circled 'p' dynamic marking. The music consists of three measures with various note values and accidentals.

Handwritten musical notation for the second system, continuing the piece with treble and bass clefs and a 4/4 time signature.

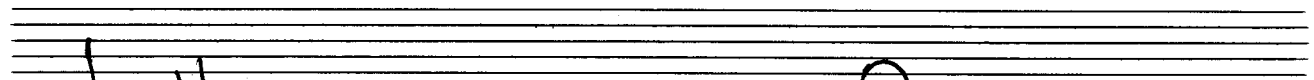
Handwritten musical notation for the third system, showing treble and bass clefs and a 4/4 time signature.

Handwritten musical notation for the fourth system, concluding the piece with treble and bass clefs and a 4/4 time signature.

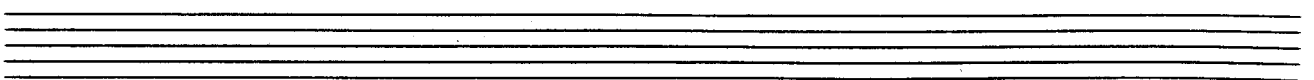
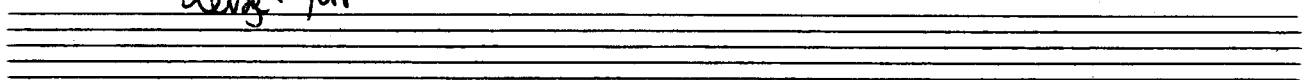
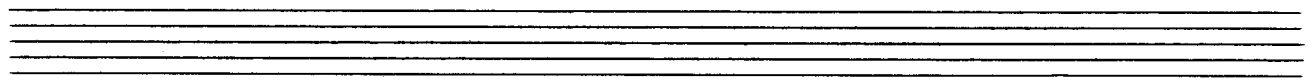
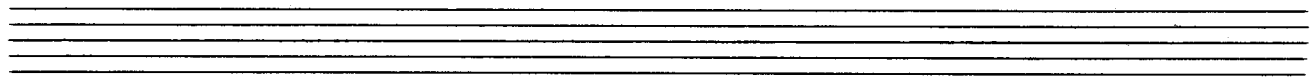
poco rit

2te gr. rit

D.C.



breit



The image shows a handwritten musical score for organ, consisting of three systems of two staves each. The notation is written in black ink on white paper. Each system begins with a treble clef on the upper staff and a bass clef on the lower staff. The key signature is one sharp (F#). The first system contains two measures of music. The second system contains two measures, with a flat (b) appearing above the second measure. The third system contains two measures, with a fermata symbol above the second measure. The piece concludes with the handwritten text "D.C. al Fine" written vertically on the right side of the page.

Osterlied (1631)

schlicht

The image shows a handwritten musical score for an organ piece titled "Osterlied (1631)". The score is written on four systems of five-line staves. The first system includes a treble clef, a 3/2 time signature, and a circled 'p' dynamic marking. The notation consists of eighth and sixteenth notes, often beamed together, with various rests and phrasing slurs. The second system continues the melodic and harmonic development. The third system features more complex rhythmic patterns and phrasing. The fourth system concludes with a double bar line and the word "FINIS" written in a decorative box. The handwriting is clear and legible, typical of a composer's or arranger's manuscript.

frei

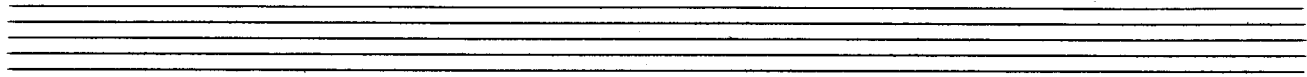
Handwritten musical score for the first system. The treble clef part features a complex melodic line with many notes, some beamed together, and a fermata. The bass clef part has a simpler accompaniment with chords and single notes. The system ends with a double bar line and repeat dots.

Handwritten musical score for the second system. The treble clef part continues the melodic line with some rests and a fermata. The bass clef part has a similar accompaniment style. The system ends with a double bar line and repeat dots.

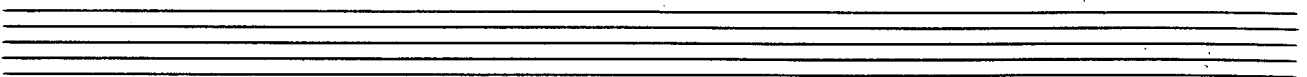
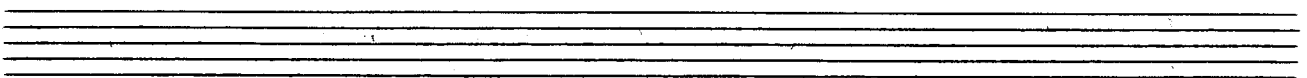
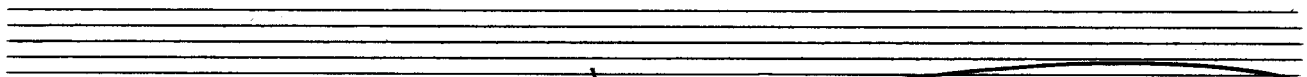
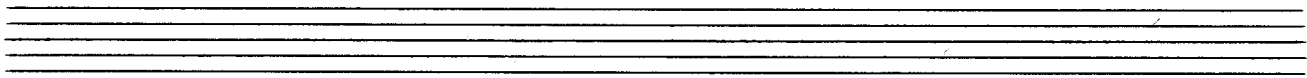
Handwritten musical score for the third system. The treble clef part continues the melodic line with various accidentals and a fermata. The bass clef part has a similar accompaniment style. The system ends with a double bar line and repeat dots.

frei

Handwritten musical score for the fourth system. The treble clef part features a complex melodic line with many notes, some beamed together, and a fermata. The bass clef part has a simpler accompaniment with chords and single notes. The system ends with a double bar line and repeat dots. The text "D.C. al Fine" is written at the end of the system.



breit (aber nicht schleppen) Ad lib



Handwritten musical notation for the first system. It consists of two staves: a treble clef staff and a bass clef staff. The treble staff contains a series of eighth notes with stems pointing up, grouped into two measures. The first measure has a flat (b) above it. The notes are: G4, A4, B4, C5, B4, A4, G4. The second measure has a flat (b) above it. The notes are: F#4, G4, A4, B4, A4, G4. There are triplets indicated by a '3' below the notes in both measures. The bass staff contains a series of eighth notes with stems pointing down, grouped into two measures. The first measure has a flat (b) below it. The notes are: F3, G3, A3, B3, A3, G3. The second measure has a flat (b) below it. The notes are: F3, G3, A3, B3, A3, G3. There are triplets indicated by a '3' above the notes in both measures. A large bracket spans across both staves and both measures.

Handwritten musical notation for the second system. It consists of two staves: a treble clef staff and a bass clef staff. The treble staff contains a series of quarter notes with stems pointing up, grouped into two measures. The first measure has a flat (b) above it. The notes are: G4, A4, B4, C5, B4, A4, G4. The second measure has a flat (b) above it. The notes are: F#4, G4, A4, B4, A4, G4. The bass staff contains a series of quarter notes with stems pointing down, grouped into two measures. The first measure has a flat (b) below it. The notes are: F3, G3, A3, B3, A3, G3. The second measure has a flat (b) below it. The notes are: F3, G3, A3, B3, A3, G3. A large bracket spans across both staves and both measures.

Handwritten musical notation for the third system. It consists of two staves: a treble clef staff and a bass clef staff. The treble staff contains a series of quarter notes with stems pointing up, grouped into two measures. The first measure has a flat (b) above it. The notes are: G4, A4, B4, C5, B4, A4, G4. The second measure has a flat (b) above it. The notes are: F#4, G4, A4, B4, A4, G4. The bass staff contains a series of quarter notes with stems pointing down, grouped into two measures. The first measure has a flat (b) below it. The notes are: F3, G3, A3, B3, A3, G3. The second measure has a flat (b) below it. The notes are: F3, G3, A3, B3, A3, G3. A large bracket spans across both staves and both measures.

Handwritten musical notation for the fourth system. It consists of two staves: a treble clef staff and a bass clef staff. The treble staff contains a series of quarter notes with stems pointing up, grouped into two measures. The first measure has a flat (b) above it. The notes are: G4, A4, B4, C5, B4, A4, G4. The second measure has a flat (b) above it. The notes are: F#4, G4, A4, B4, A4, G4. The bass staff contains a series of quarter notes with stems pointing down, grouped into two measures. The first measure has a flat (b) below it. The notes are: F3, G3, A3, B3, A3, G3. The second measure has a flat (b) below it. The notes are: F3, G3, A3, B3, A3, G3. A large bracket spans across both staves and both measures. At the end of the system, there is a flourish consisting of several wavy lines.

2x mit.

ouvert (a) f b

Handwritten musical notation for the first system. The treble staff contains a series of notes with various accidentals (flats and naturals) and a sharp sign. The bass staff shows a circled '8' and a '34' in a circle, followed by notes and rests. A large slur covers the entire system.

Handwritten musical notation for the second system. The treble staff continues with notes and accidentals. The bass staff has notes and rests, with a '9' written below. A large slur covers the system.

Handwritten musical notation for the third system. The treble staff features more complex rhythmic patterns with notes and accidentals. The bass staff has notes and rests, with a '9' written below. A large slur covers the system.

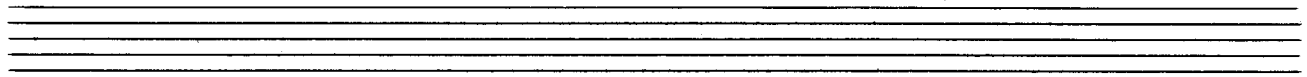
Handwritten musical notation for the fourth system. The treble staff has notes and accidentals, ending with a double bar line and a square symbol. The bass staff has notes and rests, with a '9' written below. A large slur covers the system.

Handwritten musical notation for the first system. The treble staff contains a series of notes with various accidentals (sharps, flats, naturals) and a fermata. The bass staff contains a few notes and a fermata. A large slur covers both staves.

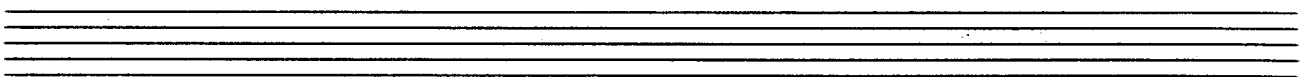
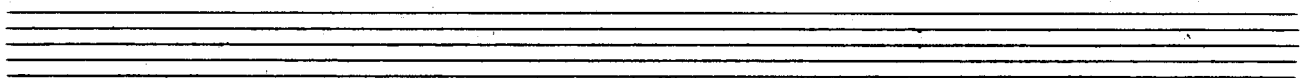
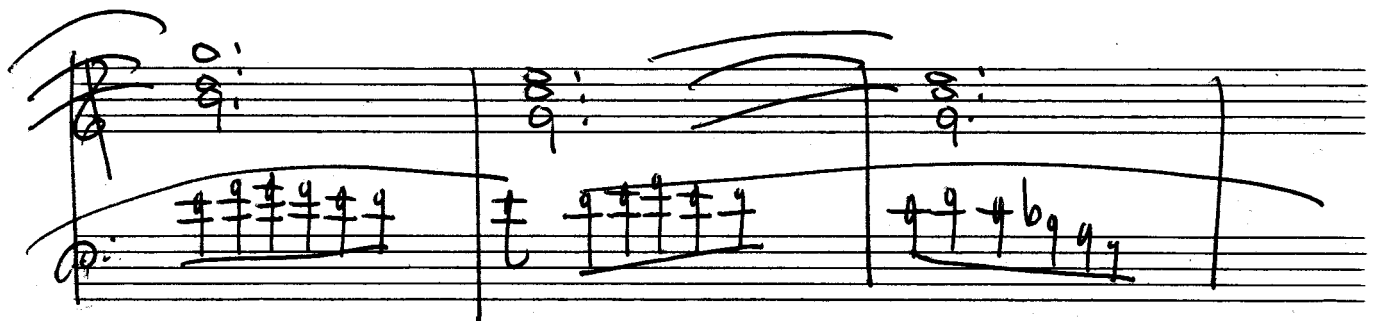
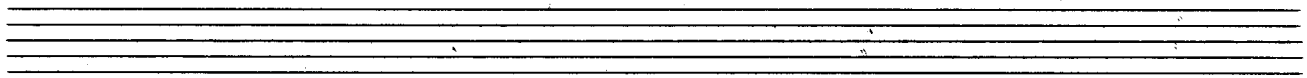
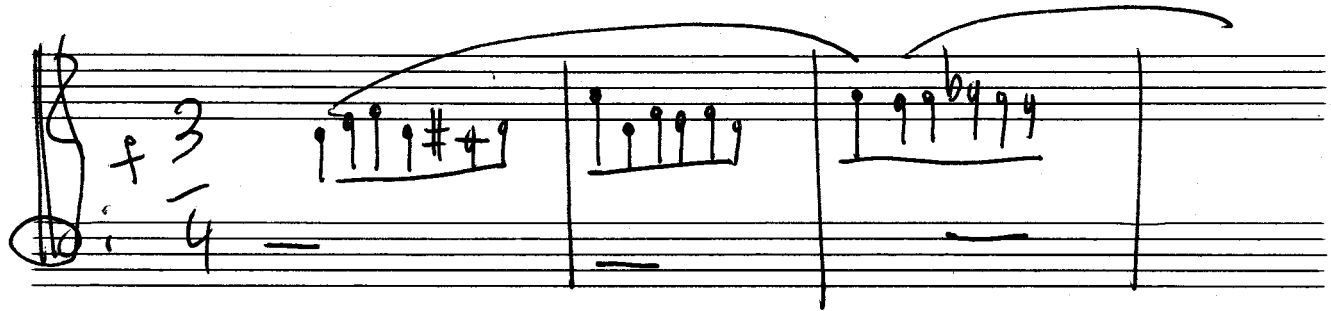
Handwritten musical notation for the second system. The treble staff contains a series of notes with various accidentals and a fermata. The bass staff contains a few notes and a fermata. A large slur covers both staves.

Handwritten musical notation for the third system. The treble staff contains a series of notes with various accidentals and a fermata. The bass staff contains a few notes and a fermata. A large slur covers both staves.

Handwritten musical notation for the fourth system. The treble staff contains a series of notes with various accidentals and a fermata. The bass staff contains a few notes and a fermata. A large slur covers both staves. At the end of the system, there are handwritten notes: "2. x", "D.C.", "al", and "Fine".



gracioso



Letzte mit FINE

Adolf Scherbaum

Handwritten musical notation for the first system. It consists of two staves. The top staff is in treble clef with a 3/8 time signature. It contains a melodic line with a slur over four measures and a fermata over the final note. The bottom staff is in bass clef and contains a bass line with a fermata over the first measure.

Handwritten musical notation for the second system. It consists of two staves. The top staff is in treble clef and contains a melodic line with a slur over four measures. The bottom staff is in bass clef and contains a bass line with a fermata over the first measure.

Handwritten musical notation for the third system. It consists of two staves. The top staff is in treble clef with a key signature change to one flat (B-flat) indicated by a 'b' above the staff. It contains a melodic line with a slur over four measures and a fermata over the final note. The bottom staff is in bass clef and contains a bass line with a fermata over the first measure.

Handwritten musical notation for the fourth system. It consists of two staves. The top staff is in treble clef with a key signature change to two flats (B-flat and E-flat) indicated by 'b' and 'bb' above the staff. It contains a melodic line with a slur over four measures and a fermata over the final note. The bottom staff is in bass clef and contains a bass line with a fermata over the first measure.

Handwritten musical notation for the first system. The treble staff contains a melodic line with a slur over the first four notes and a fermata over the fifth. The bass staff contains a bass line with a key signature of one sharp (F#) and a common time signature (C). The notes in the bass staff are: F#4, G4, A4, B4, C5.

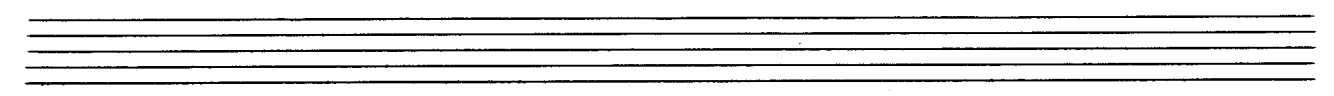
Handwritten musical notation for the second system. The treble staff contains a melodic line with a slur over the first four notes. The bass staff contains a bass line with a key signature of one sharp (F#) and a common time signature (C). The notes in the bass staff are: F#4, G4, A4, B4, C5.

Handwritten musical notation for the third system. The treble staff contains a melodic line with a slur over the first three notes and a fermata over the fourth. The bass staff contains a bass line with a key signature of one sharp (F#) and a common time signature (C). The notes in the bass staff are: F#4, G4, A4, B4, C5.

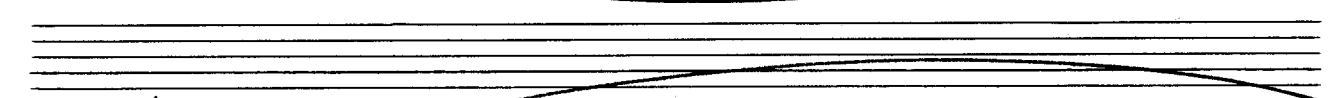
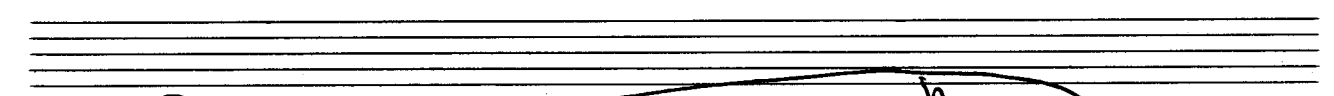
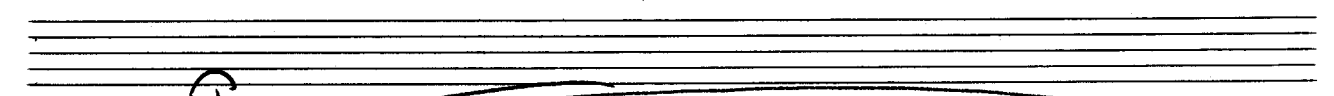
Handwritten musical notation for the fourth system. The treble staff contains a melodic line with a slur over the first two notes and a fermata over the third. The bass staff contains a bass line with a key signature of one sharp (F#) and a common time signature (C). The notes in the bass staff are: F#4, G4, A4, B4, C5.

Empty musical staff.

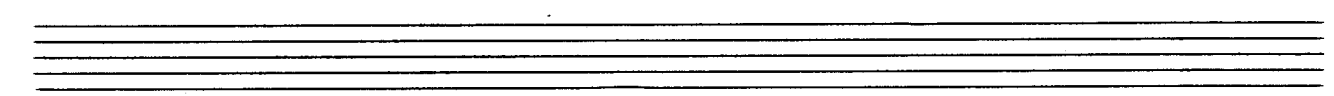
Empty musical staff.



frei (rubato)



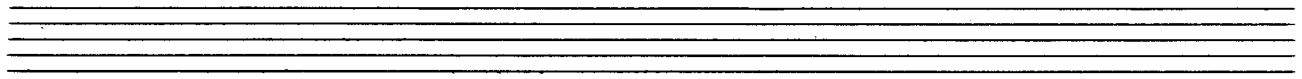
breit



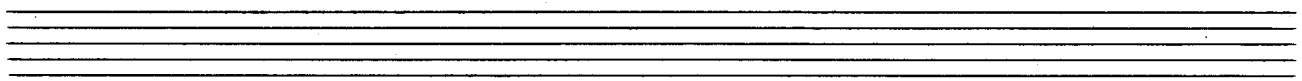
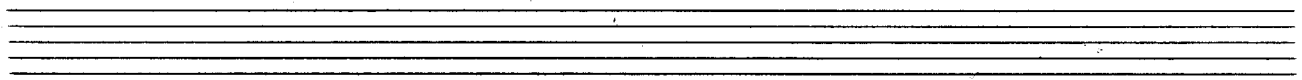
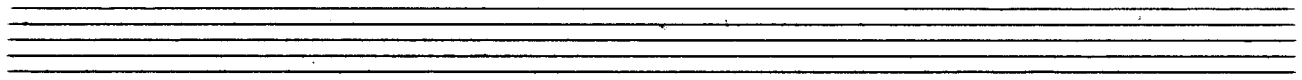
rubato

D.e. ad

breit



Presto



Handwritten musical notation for the first system, featuring a treble clef with a sharp sign and a bass clef with a key signature of one sharp. The music consists of two staves with various notes, rests, and accidentals.

Handwritten musical notation for the second system, continuing the piece with similar notation and a key signature of one sharp.

Handwritten musical notation for the third system, ending with a double bar line and the word "Folge" with an arrow pointing right.

mir letzte +

lento weit.

FINE

Handwritten musical notation for the first system. The treble staff contains a melodic line with eighth and sixteenth notes, some beamed together. The bass staff contains a bass line with a wavy line at the start, followed by a half note and a quarter note. A large slur covers both staves across two measures.

Handwritten musical notation for the second system. The treble staff continues the melodic line with similar note values. The bass staff features a wavy line, a half note with a flat (bb), and a quarter note with a flat (bd). A large slur covers both staves across two measures.

Handwritten musical notation for the third system. The treble staff shows a continuation of the melodic line. The bass staff has a wavy line, a half note with a flat (b), and a quarter note with a flat (b). A large slur covers both staves across two measures.

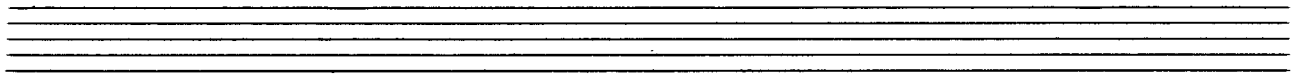
Two empty musical staves at the bottom of the page, consisting of five lines each.

Handwritten musical notation for the first system, featuring a treble and bass staff. A large slur covers the treble staff. The bass staff contains several notes with stems and beams, and a sharp sign (#) is visible.

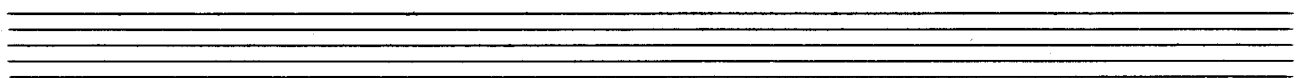
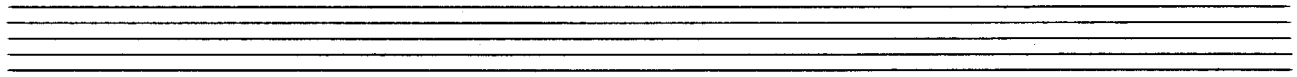
Handwritten musical notation for the second system, showing treble and bass staves. The treble staff has a slur over a series of notes. The bass staff contains complex rhythmic patterns with many notes and stems.

Handwritten musical notation for the third system, including treble and bass staves. The treble staff has a sharp sign (#) and a slur. The bass staff contains complex rhythmic patterns with many notes and stems.

21 +
p.e.
al.
Fine



leuts



Handwritten musical score for organ, consisting of four systems of two staves each. The notation includes various notes, rests, and dynamic markings. The first system shows a treble clef with a sharp sign and a bass clef with a sharp sign. The second system continues the melodic and harmonic lines. The third system includes the instruction "poco rit." and ends with a double bar line and a sharp sign. The fourth system concludes with the word "Fine" and a final flourish.

mit 25

Moderato (breit)

Handwritten musical notation for the first system, featuring a grand staff with treble and bass clefs, a 4/4 time signature, and dynamic marking 'ff'. The music includes a melodic line with a fermata and a bass line with chords and a final chord with a sharp sign.

Handwritten musical notation for the second system, featuring a grand staff with treble and bass clefs. The music includes a melodic line with a fermata and a bass line with chords and a final chord with a sharp sign.

Handwritten musical notation for the third system, featuring a grand staff with treble and bass clefs. The music includes a melodic line with a fermata and a bass line with chords and a final chord with a sharp sign.

Handwritten musical notation for the fourth system, featuring a grand staff with treble and bass clefs. The music includes a melodic line with a fermata and a bass line with chords and a final chord with a sharp sign.

Handwritten musical notation on a grand staff. The right hand part features a melodic line with a circled 'p' dynamic marking. The left hand part provides harmonic support with chords and single notes. The system concludes with a double bar line.

Handwritten musical notation on a grand staff. The right hand part contains a series of eighth-note runs. The left hand part has a few notes and rests. A long slur covers the entire system.

Handwritten musical notation on a grand staff. The right hand part has a melodic line with a fermata. The left hand part has chords. The system ends with a double bar line and the handwritten note "2. + D.C."

Handwritten musical notation on a grand staff. The right hand part has a melodic line with a fermata. The left hand part has chords. The system ends with a double bar line and a large flourish.

Allegro (mod.)

Handwritten musical notation for the first system. It consists of two staves. The top staff is in treble clef and the bottom in bass clef. The time signature is 4/4. A circled 'P' (piano) dynamic marking is present. The music features several chords with accidentals (flats) and a slur over the first two measures. The word 'ruhig' is written below the bass staff.

Handwritten musical notation for the second system, continuing the piece with similar chordal structures and accidentals.

Handwritten musical notation for the third system, showing further development of the musical ideas.

Handwritten musical notation for the fourth system, concluding the piece with final chords.

letzte gut Fine

The first system of handwritten musical notation consists of two staves. The top staff is in treble clef and contains a half note followed by a quarter rest, then a quarter note, and a half note. The bottom staff is in bass clef and contains a half note, a quarter rest, a quarter note, and a half note. A vertical line separates the system into two measures. The word 'letzte gut' is written above the first measure, and 'Fine' is written above the second measure. A large slur covers the entire system.

The second system of handwritten musical notation consists of two staves. The top staff is in treble clef and contains a half note, a quarter rest, a quarter note, and a half note. The bottom staff is in bass clef and contains a half note, a quarter rest, a quarter note, and a half note. A vertical line separates the system into two measures. A large slur covers the entire system.

The third system of handwritten musical notation consists of two staves. The top staff is in treble clef and contains a half note, a quarter rest, a quarter note, and a half note. The bottom staff is in bass clef and contains a half note, a quarter rest, a quarter note, and a half note. A vertical line separates the system into two measures. A large slur covers the entire system.

2. + D.C. od Fine

The fourth system of handwritten musical notation consists of two staves. The top staff is in treble clef and contains a half note, a quarter rest, a quarter note, and a half note. The bottom staff is in bass clef and contains a half note, a quarter rest, a quarter note, and a half note. A vertical line separates the system into two measures. The text '2. + D.C. od Fine' is written above the second measure. A large slur covers the entire system.

frei (rubato) (Landsknechtlied - 16. Jahrhundert)

Handwritten musical notation for the first system, featuring a treble clef, a key signature of one sharp (F#), and a common time signature (C). The melody is written on a five-line staff with various note values and rests, including a long slur over the first few notes. The bass staff contains a simple accompaniment pattern of quarter notes.

Handwritten musical notation for the second system, continuing the melody from the first system. It includes a treble clef, a key signature of one sharp (F#), and a common time signature (C). The melody features a series of sixteenth-note runs and a final cadence. The bass staff continues with the accompaniment pattern.

Handwritten musical notation for the third system, continuing the melody. It includes a treble clef, a key signature of one sharp (F#), and a common time signature (C). The melody features a series of sixteenth-note runs and a final cadence. The bass staff continues with the accompaniment pattern.

Handwritten musical notation for the fourth system, concluding the piece. It includes a treble clef, a key signature of one sharp (F#), and a common time signature (C). The melody features a series of sixteenth-note runs and a final cadence. The bass staff continues with the accompaniment pattern. The system ends with a double bar line and the instruction "D.C."

soler

bweit

Handwritten musical notation for the first system. The treble staff contains several measures of music with notes, rests, and dynamic markings. The bass staff contains notes and rests. A circled sharp symbol is present in the first measure of the treble staff.

Handwritten musical notation for the second system. The treble staff contains several measures of music with notes, rests, and dynamic markings. The bass staff contains notes and rests.

Handwritten musical notation for the third system. The treble staff contains several measures of music with notes, rests, and dynamic markings. The bass staff contains notes and rests. The system is divided into two parts labeled '1.' and '2.'. The second part includes the instruction 'p.c. ad' and a circled sharp symbol.

Handwritten musical notation for the fourth system. The treble staff contains several measures of music with notes, rests, and dynamic markings. The bass staff contains notes and rests. The system includes the instruction 'p.c. ad' and a circled sharp symbol.