

1959 ADAMIKER SCHUBERT

Teile für große
Orgel

1959 Adolf Scherbaum

langsam I.

pp

4

4

4

4

4

4

pp

FINE

Handwritten musical notation for the first system. It consists of two staves: a treble clef staff on top and a bass clef staff on the bottom. The treble staff begins with a key signature of one sharp (F#) and contains a melodic line with notes G4, A4, B4, C5, B4, A4, G4, and F#4. The bass staff contains a bass line with notes G2, F#2, E2, and D2. A dynamic marking 'pp' is circled in the first measure. A slur covers the first two measures of the treble staff.

Handwritten musical notation for the second system. It continues the two-staff format. The treble staff has notes G4, A4, B4, C5, B4, A4, G4, and F#4. The bass staff has notes G2, F#2, E2, and D2. A slur covers the first two measures of the treble staff.

Handwritten musical notation for the third system. The treble staff contains notes G4, A4, B4, C5, B4, A4, G4, and F#4. The bass staff contains notes G2, F#2, E2, and D2. A slur covers the first two measures of the treble staff.

Handwritten musical notation for the fourth system. The treble staff contains notes G4, A4, B4, C5, B4, A4, G4, and F#4. The bass staff contains notes G2, F#2, E2, and D2. A double bar line is present at the end of the system. To the right of the double bar line, the text 'D.C. al Fine.' is written.

II.

Handwritten musical notation for the first system, featuring a grand staff with treble and bass clefs. The music includes a melodic line in the treble clef and a complex accompaniment in the bass clef with various notes and rests.

Handwritten musical notation for the second system, showing a grand staff with treble and bass clefs. It features a melodic line with a slur and a four-measure bracket, and a bass line with a four-measure bracket.

Handwritten musical notation for the third system, showing a grand staff with treble and bass clefs. The music concludes with a double bar line and the word "FIN" circled in the right margin.

Lento III.

Handwritten musical notation for the first system. It consists of two staves. The upper staff is in treble clef and contains a melodic line with notes and rests. The lower staff is in bass clef and contains a bass line with notes and rests. The notation includes dynamic markings such as *pp* and *4*.

Handwritten musical notation for the second system. It consists of two staves. The upper staff is in treble clef and contains a melodic line with notes and rests. The lower staff is in bass clef and contains a bass line with notes and rests. The notation includes dynamic markings such as *pp* and *4*.

Handwritten musical notation for the third system. It consists of two staves. The upper staff is in treble clef and contains a melodic line with notes and rests. The lower staff is in bass clef and contains a bass line with notes and rests. The notation includes dynamic markings such as *pp* and *4*.

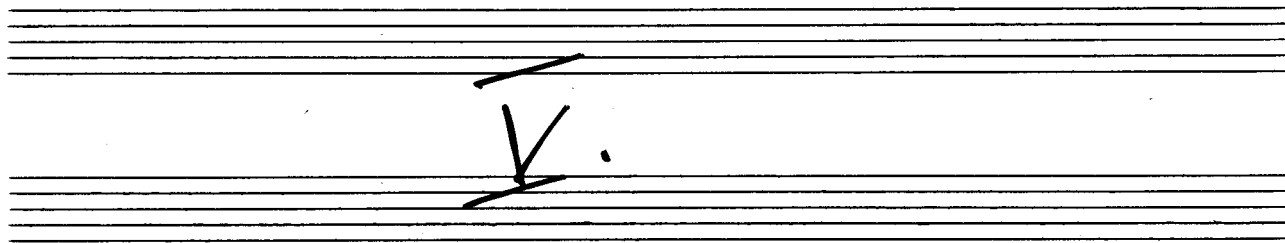
IV.

Presto
♩. =

Handwritten musical notation for the first system. The treble staff begins with a treble clef, a key signature of one flat (B-flat), and a time signature of 6/8. A circled 'p' indicates piano dynamics. The melody consists of eighth and sixteenth notes, with a slur over the first two measures. The bass staff has a bass clef and a time signature of 8/8. It features a simple accompaniment with quarter and eighth notes. A fermata is placed over the final measure of the system.

Handwritten musical notation for the second system. It continues the piece with the same treble and bass staves. The treble staff has a key signature change to two sharps (F# and C#) in the final measure. The bass staff continues with its accompaniment. A fermata is placed over the final measure.

Handwritten musical notation for the third system, which concludes the piece. It features the same treble and bass staves. A box containing the word 'FIN!' is written above the final measure of the treble staff. A fermata is placed over the final measure.



breit (Lento)

voller Werk

Handwritten musical score for the first system. It consists of three staves. The top staff is in treble clef with a key signature of two flats (B-flat and E-flat). The middle and bottom staves are in bass clef. The notation includes various chords, some with accidentals, and a melodic line in the bottom staff.

Handwritten musical score for the second system. It consists of three staves. The notation is similar to the first system. The system concludes with a double bar line and the handwritten marking "Dal segno" in the right margin.

Handwritten musical score for the third system. It consists of three staves. The notation includes a key signature change to three sharps (F#, C#, G#) in the second measure. The system concludes with a double bar line and the word "FINE" enclosed in a box in the right margin.

VI.

Moderato

$\text{♩} =$ sehr ruhig

Handwritten musical notation for the first system. The treble clef staff contains a melodic line with notes G4, A4, B4, C5, B4, A4, G4, and a fermata over the final G4. The bass clef staff contains a bass line with notes G3, F3, E3, D3, C3, B2, A2, and a fermata over the final A2. A circled 'P' is written in the bass staff. A slur spans the first measure of both staves.

Handwritten musical notation for the second system. The treble clef staff contains a melodic line with notes G4, A4, B4, C5, B4, A4, G4, and a fermata over the final G4. The bass clef staff contains a bass line with notes G3, F3, E3, D3, C3, B2, A2, and a fermata over the final A2. A slur spans the first measure of both staves.

Handwritten musical notation for the third system. The treble clef staff contains a melodic line with notes G4, A4, B4, C5, B4, A4, G4, and a fermata over the final G4. The bass clef staff contains a bass line with notes G3, F3, E3, D3, C3, B2, A2, and a fermata over the final A2. A slur spans the first measure of both staves.

Handwritten musical notation for the first system. The treble clef staff contains a long slur over notes: $b^{\flat}g$, i , i , $b^{\flat}d$, i , i . The bass clef staff contains notes: $b^{\flat}g$, i , i , $b^{\flat}d$, i , i .

Handwritten musical notation for the second system. The treble clef staff contains notes: $b^{\flat}g$, i , i , $b^{\flat}d$, i , i , $\#$, $b^{\flat}g$, i , i . The bass clef staff contains notes: $b^{\flat}g$, i , i , $b^{\flat}d$, i , i . The system ends with a double bar line and the marking "D.C." above it.

Handwritten musical notation for the third system. The treble clef staff contains notes: $b^{\flat}g$, i , i , $b^{\flat}d$, i , i . The bass clef staff contains notes: $b^{\flat}g$, i , i , $b^{\flat}d$, i , i .

Handwritten musical notation for the fourth system. The treble clef staff contains notes: $b^{\flat}g$, i , i , $b^{\flat}d$, i , i . The bass clef staff contains notes: $b^{\flat}g$, i , i , $b^{\flat}d$, i , i . The system ends with a double bar line and a circled "FIN." above it. Below the staff, the text "op. gut" is written.

VII.

Sehr ruhige $\frac{4}{4}$

Handwritten musical notation for the first system. It features a grand staff with treble and bass clefs. The time signature is 4/4, and the dynamic marking is *pp*. The first measure contains a series of notes with accidentals (sharps and flats) and a slur. The second measure continues the melodic line with similar accidentals and a slur.

Handwritten musical notation for the second system. It continues the piece with similar notation and accidentals. The first measure has a slur over a series of notes with accidentals. The second measure has a slur over a series of notes with accidentals.

Handwritten musical notation for the third system. It ends with the instruction "letzte + ruh..." and a circled "F.M.V." marking. The first measure has a slur over a series of notes with accidentals. The second measure has a slur over a series of notes with accidentals.

Handwritten musical notation for the first system. The top staff is in treble clef and the bottom staff is in bass clef. The music begins with a repeat sign. The melodic line in the treble clef starts with a quarter note G4, followed by a half note A4, and then a quarter note B4. The accompaniment in the bass clef consists of a series of chords: G2-B2-D3, A2-C3-E3, and B2-D3-F3. The system concludes with two measures of rests.

Handwritten musical notation for the second system. The melodic line continues with a quarter note C5, followed by a half note D5, and then a quarter note E5. The accompaniment changes to G3-B3-D4, A3-C4-E4, and B3-D4-F4. The system concludes with two measures of rests.

Handwritten musical notation for the third system. The melodic line continues with a quarter note F5, followed by a half note G5, and then a quarter note A5. The accompaniment changes to G4-B4-D5, A4-C5-E5, and B4-D5-F5. The system concludes with two measures of rests.

Handwritten musical notation for the fourth system. The melodic line continues with a quarter note B5, followed by a half note C6, and then a quarter note D6. The accompaniment changes to G5-B5-D6, A5-C6-E6, and B5-D6-F6. The system concludes with a double bar line and the text "p.c. or Fin." written vertically.



Wien.
1959
Adolf
Scherbaum

Eine See —
ist Gottes Gnade

VIII.

sehr ruhig

Handwritten musical notation for the first system. It features a grand staff with two staves. The time signature is 3/4. The key signature has one sharp (F#). The notation includes a piano (pp) dynamic marking. The music consists of eighth and sixteenth notes, with several triplet markings (indicated by a '3' in a box) and slurs. The first system ends with a double bar line.

Handwritten musical notation for the second system, continuing the piece. It maintains the same grand staff, 3/4 time signature, and one-sharp key signature. The notation continues with eighth and sixteenth notes, triplets, and slurs.

Handwritten musical notation for the third system, continuing the piece. It maintains the same grand staff, 3/4 time signature, and one-sharp key signature. The notation continues with eighth and sixteenth notes, triplets, and slurs.

Handwritten musical notation for the first system, featuring a treble and bass staff. A large slur covers the treble staff. The treble staff contains several triplet markings (indicated by a '3' in a box) and a sharp sign (#). The bass staff contains rhythmic notation with stems and beams.

Handwritten musical notation for the second system, featuring a treble and bass staff. A slur covers the treble staff. The treble staff contains a fermata over the final note. The bass staff contains rhythmic notation with stems and beams.

Handwritten musical notation for the third system, featuring a treble and bass staff. A slur covers the treble staff. The treble staff contains a 'pp' dynamic marking and triplet markings. The bass staff contains rhythmic notation with stems and beams.

Handwritten musical notation for the fourth system, featuring a treble and bass staff. A slur covers the treble staff. The treble staff contains a 'ritardando' marking and a circled 'FIN' at the end. The bass staff contains rhythmic notation with stems and beams.

XI.

frei (rubato)
roll. werk

PRESTO

breit

Presto

frei

I.

Presto (auf 1 Schlag 3 + 4 + spielen (ad. libitum))

Handwritten musical notation for the first system. It consists of a grand staff with a treble clef on the upper staff and a bass clef on the lower staff. The time signature is 2/4. The music begins with a fermata over the first two notes of the treble staff. The notes are G4 (sharp) and A4 (sharp) in the treble, and F3 (sharp) and G3 (sharp) in the bass. The first measure is followed by a second measure with G4 (sharp) and A4 (sharp) in the treble, and F3 (sharp) and G3 (sharp) in the bass. The third measure has G4 (sharp) and A4 (sharp) in the treble, and F3 (sharp) and G3 (sharp) in the bass. The fourth measure has G4 (sharp) and A4 (sharp) in the treble, and F3 (sharp) and G3 (sharp) in the bass. The word "hart" is written below the bass staff.

Handwritten musical notation for the second system. It consists of a grand staff with a treble clef on the upper staff and a bass clef on the lower staff. The music continues from the first system. The first measure has G4 (sharp) and A4 (sharp) in the treble, and F3 (sharp) and G3 (sharp) in the bass. The second measure has G4 (sharp) and A4 (sharp) in the treble, and F3 (sharp) and G3 (sharp) in the bass. The third measure has G4 (sharp) and A4 (sharp) in the treble, and F3 (sharp) and G3 (sharp) in the bass. The fourth measure has G4 (sharp) and A4 (sharp) in the treble, and F3 (sharp) and G3 (sharp) in the bass.

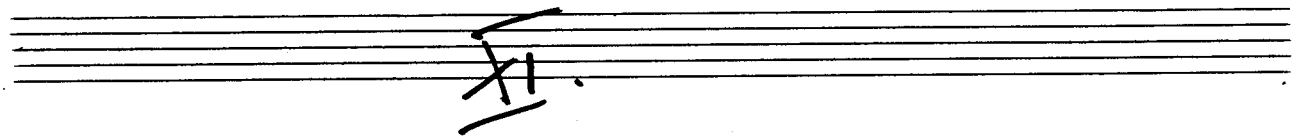
Handwritten musical notation for the third system. It consists of a grand staff with a treble clef on the upper staff and a bass clef on the lower staff. The music concludes with a final cadence. The first measure has G4 (sharp) and A4 (sharp) in the treble, and F3 (sharp) and G3 (sharp) in the bass. The second measure has G4 (sharp) and A4 (sharp) in the treble, and F3 (sharp) and G3 (sharp) in the bass. The third measure has G4 (sharp) and A4 (sharp) in the treble, and F3 (sharp) and G3 (sharp) in the bass. The fourth measure has G4 (sharp) and A4 (sharp) in the treble, and F3 (sharp) and G3 (sharp) in the bass.

Handwritten musical notation for the first system, featuring a treble and bass clef with various notes and accidentals.

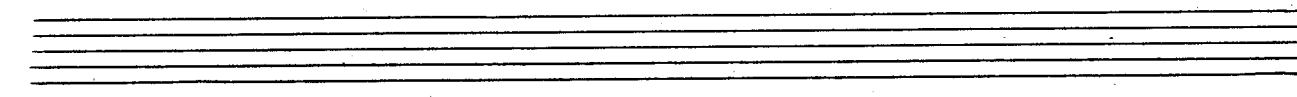
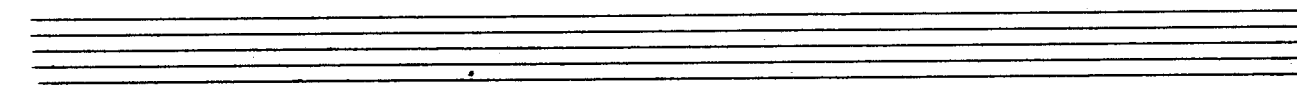
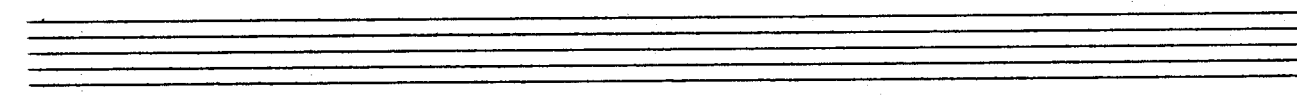
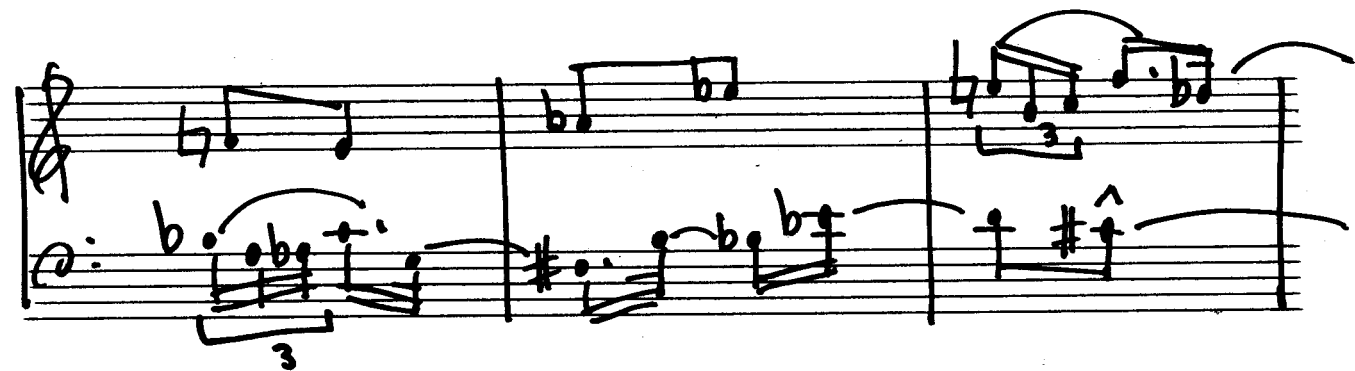
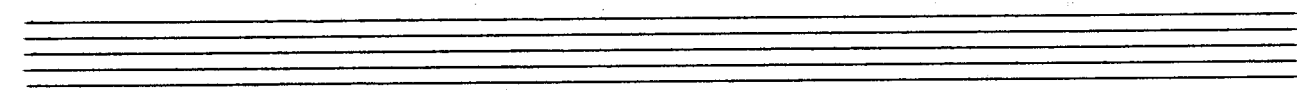
Handwritten musical notation for the second system, continuing the piece with similar notation.

Handwritten musical notation for the third system, showing more complex chordal structures.

Handwritten musical notation for the fourth system, ending with a double bar line and handwritten annotations: *fort*, *ottava*, *teie*, and *G.P.*



Presto



Handwritten musical notation for the first system. The top staff is in treble clef and the bottom staff is in bass clef. The music consists of several measures with various note values, rests, and accidentals. A triplet of eighth notes is marked in the bass staff.

Handwritten musical notation for the second system. The top staff is in treble clef and the bottom staff is in bass clef. The music continues with various note values, rests, and accidentals. Both staves contain triplet markings.

Handwritten musical notation for the third system. The top staff is in treble clef and the bottom staff is in bass clef. The music continues with various note values, rests, and accidentals. The bass staff features two triplet markings.

Handwritten musical notation for the fourth system. The top staff is in treble clef and the bottom staff is in bass clef. The music continues with various note values, rests, and accidentals. A triplet is marked in the bass staff.

Handwritten musical notation for the first system. The treble staff contains a melodic line with a long slur over the first two measures and a sharp sign in the third measure. The bass staff contains a bass line with a triplet of eighth notes in the first measure, followed by a melodic line with various accidentals.

Handwritten musical notation for the second system. The treble staff features a melodic line with a triplet of eighth notes in the first measure and various accidentals. The bass staff contains a complex bass line with multiple triplets and accidentals.

Handwritten musical notation for the third system. The treble staff features a melodic line with a triplet of eighth notes in the first measure and various accidentals. The bass staff contains a complex bass line with multiple triplets and accidentals.

Handwritten musical notation for the fourth system. The treble staff features a melodic line with a long slur over the first two measures and various accidentals. The bass staff contains a complex bass line with multiple triplets and accidentals.

Handwritten musical notation for the first system, consisting of a treble staff and a bass staff. The treble staff contains a series of notes with stems pointing upwards, including some beamed eighth notes. The bass staff contains a few notes, including a whole note and a half note.

Handwritten musical notation for the second system. The treble staff has a whole rest followed by a half note and a quarter note. The bass staff features a triplet of eighth notes in the first measure, followed by chords in the subsequent measures.

Handwritten musical notation for the third system. The treble staff contains three measures of triplets of eighth notes. The bass staff has chords corresponding to the treble staff's triplets.

Handwritten musical notation for the fourth system, concluding with a double bar line. The word "ritardando" is written above the final measure. The treble staff has a half note with a fermata, and the bass staff has a half note with a fermata.

Prestissimo

Handwritten musical notation for the first system. It consists of two staves: a treble clef staff on top and a bass clef staff on the bottom. The key signature has one sharp (F#) and the time signature is 3/4. The music is marked 'Prestissimo'. The first staff contains three measures of music, each with a triplet of eighth notes. The second staff contains three measures of music, each with a triplet of eighth notes. The notes in the first staff are B4, C5, D5, and the notes in the second staff are B3, C4, D4.

Handwritten musical notation for the second system. It consists of two staves: a treble clef staff on top and a bass clef staff on the bottom. The key signature has one sharp (F#) and the time signature is 3/4. The music is marked 'Prestissimo'. The first staff contains three measures of music, each with a triplet of eighth notes. The second staff contains three measures of music, each with a triplet of eighth notes. The notes in the first staff are E5, F#5, G5, and the notes in the second staff are E4, F#4, G4.

Handwritten musical notation for the third system. It consists of two staves: a treble clef staff on top and a bass clef staff on the bottom. The key signature has one sharp (F#) and the time signature is 3/4. The music is marked 'Prestissimo'. The first staff contains three measures of music, each with a triplet of eighth notes. The second staff contains three measures of music, each with a triplet of eighth notes. The notes in the first staff are A5, B5, C6, and the notes in the second staff are A4, B4, C5.

Handwritten musical notation for the fourth system. It consists of two staves: a treble clef staff on top and a bass clef staff on the bottom. The key signature has one sharp (F#) and the time signature is 3/4. The music is marked 'Prestissimo'. The first staff contains three measures of music, each with a triplet of eighth notes. The second staff contains three measures of music, each with a triplet of eighth notes. The notes in the first staff are D6, E6, F#6, and the notes in the second staff are D5, E5, F#5.

sehr breit

Handwritten musical score for the first system. It consists of three staves. The top staff is a treble clef with notes: $\flat\flat$, \flat , \flat , \flat . The middle staff is a treble clef with notes: \flat , \flat , \flat , \flat . The bottom staff is a bass clef with notes: \flat , \sharp , \flat , \sharp . The lyrics are: "voll. Werk keine See ist Gottes".

Handwritten musical score for the second system. It consists of three staves. The top staff is a treble clef with notes: $\flat\flat$, \flat , \flat , \flat . The middle staff is a treble clef with notes: \flat , \flat , \flat , \flat . The bottom staff is a bass clef with notes: \flat , \flat , \flat , \flat . The lyrics are: "Sn-ade".

Handwritten musical score for the third system. It consists of three staves. The top staff is a treble clef with notes: $\flat\flat$, \flat , \flat , \flat . The middle staff is a treble clef with notes: \flat , \flat , \flat , \flat . The bottom staff is a bass clef with notes: \flat , \sharp , \flat , \sharp .

Handwritten musical score for the first system. It consists of three staves. The top staff is in treble clef and contains several chords and melodic lines. The middle staff is in alto clef and contains similar notation. The bottom staff is in bass clef and contains a melodic line with various accidentals. The system is divided into three measures by vertical bar lines.

Handwritten musical score for the second system, continuing the notation from the first system. It consists of three staves with similar notation to the first system, including chords and melodic lines across three measures.

er. rit.....

Handwritten musical score for the third system, concluding the piece. It consists of three staves with notation similar to the previous systems, ending with a double bar line. The notation includes chords and melodic lines across three measures.

lange halten

Fine

Wien 1959
Adolf
Scherbaum