

Stücke für Orgel
1959
A. Scherbaum

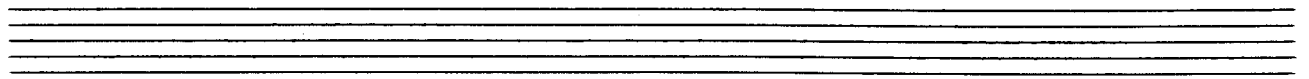
Notenheft

Bitte MATERIAL schonen

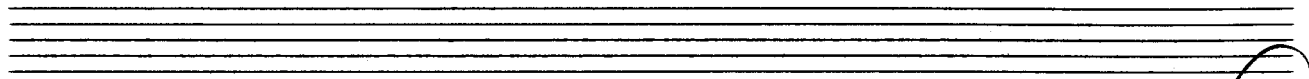
Stücke für Orgel

Wien 1959

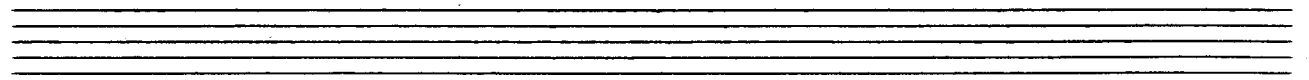
A. Scherbaum



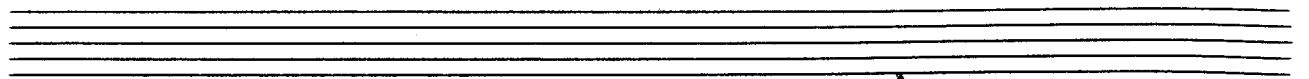
lento ①

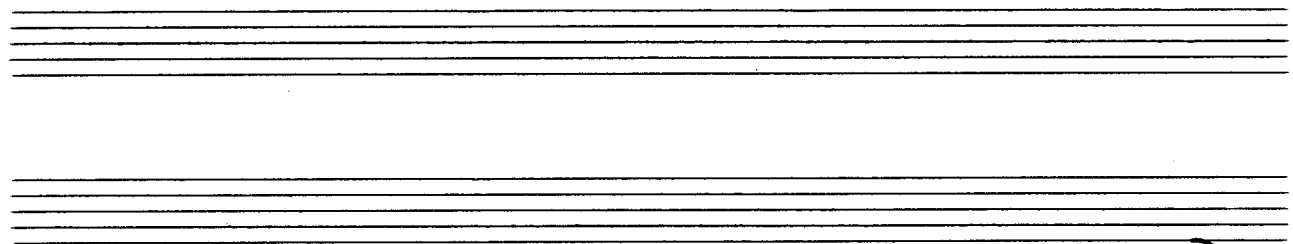


②

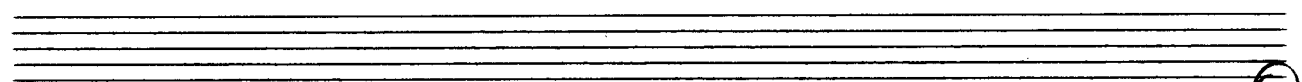
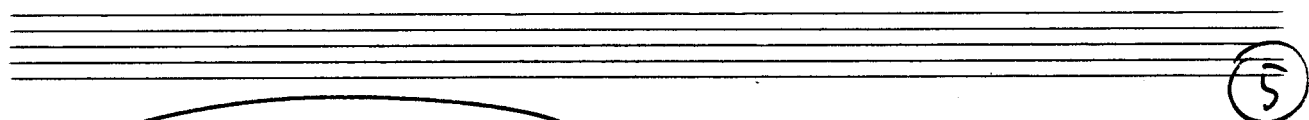


③





(4)



2

ruhig

Handwritten musical notation for the first system. It consists of a treble clef and a bass clef. The time signature is 4/4. The treble staff contains a melodic line starting with a quarter rest, followed by a quarter note G4, a quarter note A4, a quarter note B4, a quarter note C5, a quarter note B4, a quarter note A4, a quarter note G4, and a quarter note F4. A slur covers the notes from G4 to F4. The bass staff contains a series of whole notes: G3, C4, F3, and G3. A slur covers the notes from G3 to G3.

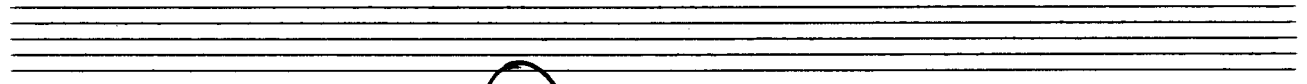
4

Handwritten musical notation for the second system. It consists of a treble clef and a bass clef. The treble staff contains a melodic line starting with a quarter note G4, a quarter note A4, a quarter note B4, a quarter note C5, a quarter note B4, a quarter note A4, a quarter note G4, and a quarter note F4. A slur covers the notes from G4 to F4. The bass staff contains a series of whole notes: G3, C4, F3, and G3. A slur covers the notes from G3 to G3. There are accidentals: a flat (b) under the C4 and F3 notes, and a sharp (#) under the B4 note.

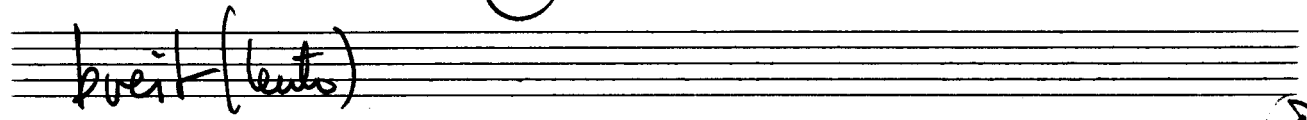
2

Handwritten musical notation for the third system. It consists of a treble clef and a bass clef. The treble staff contains a melodic line starting with a quarter note G4, a quarter note A4, a quarter note B4, and a quarter note C5. A slur covers the notes from G4 to C5. The bass staff contains a series of whole notes: G3, C4, F3, and G3. A slur covers the notes from G3 to G3. There are accidentals: a flat (b) under the C4 and F3 notes.

Handwritten musical score for organ, consisting of four systems of staves. The first system has circled numbers 3 and 4. The second system has a circled number 5. The third system has a circled number 6. The fourth system has circled numbers 1 and 2, and a circled word "Fine". A large number 5 is written below the fourth system.



3



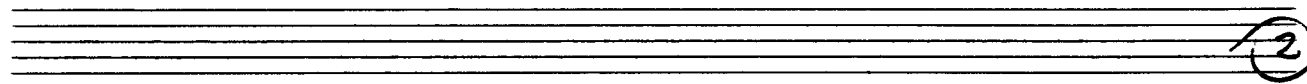
breit (lento)

pesante

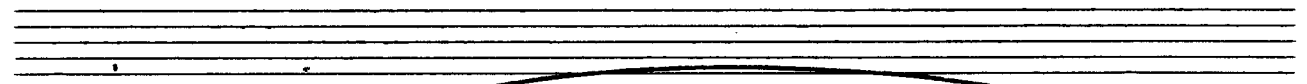
3/4

F#

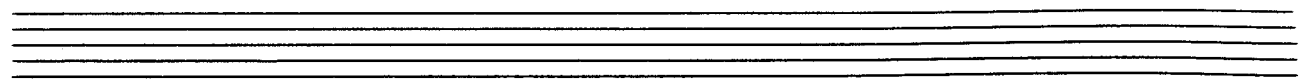
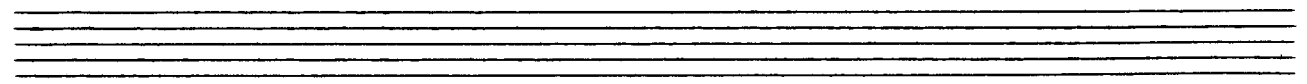
3



2



3



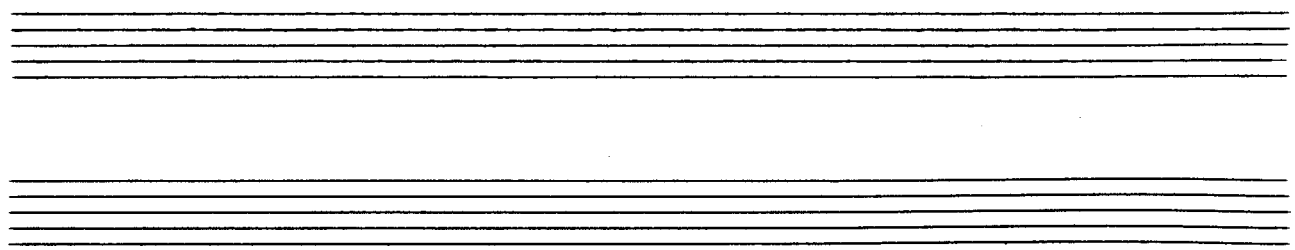
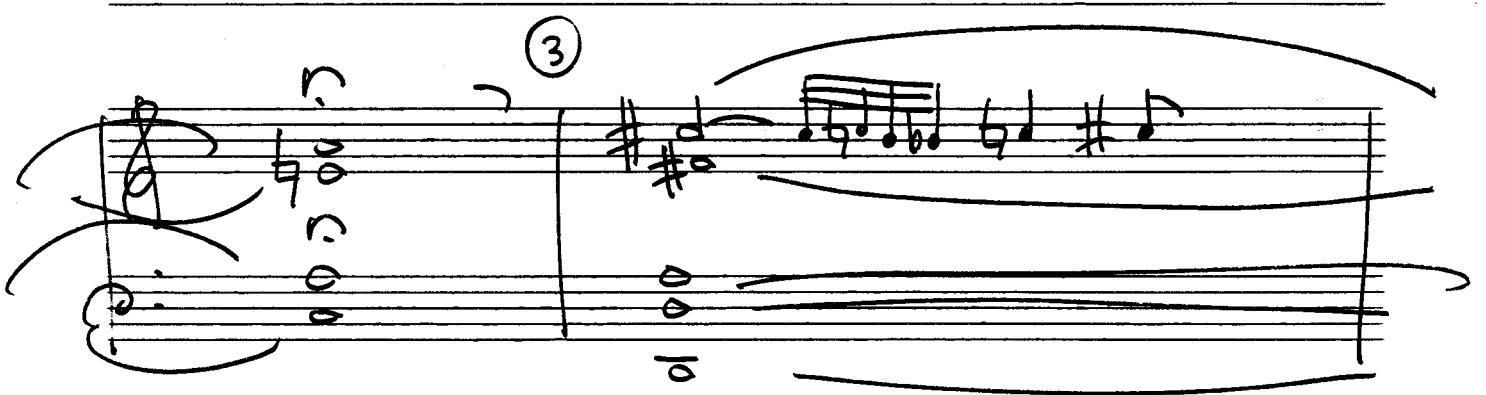
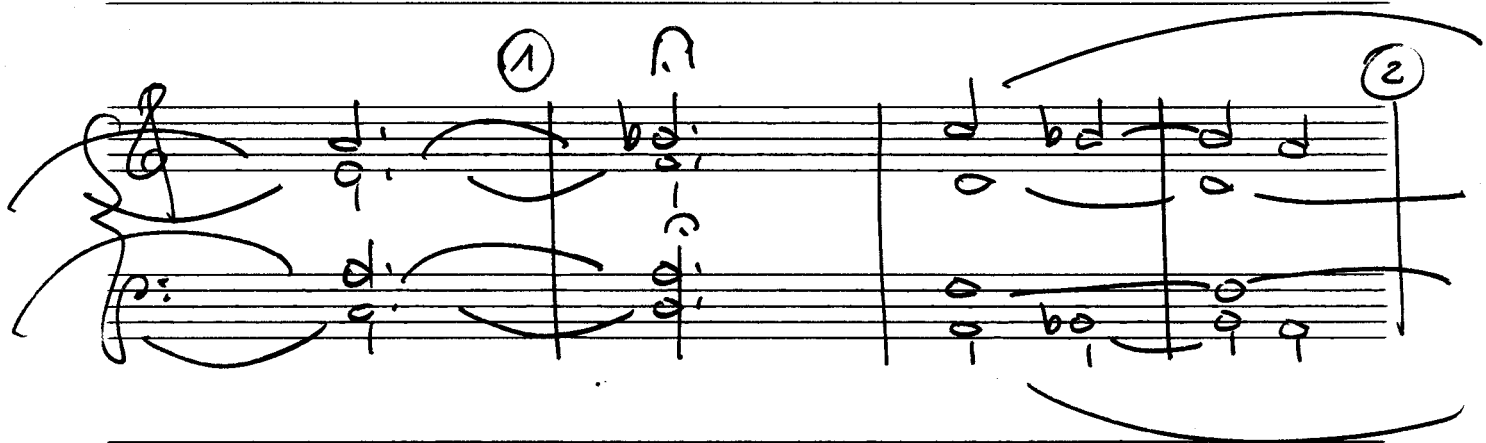
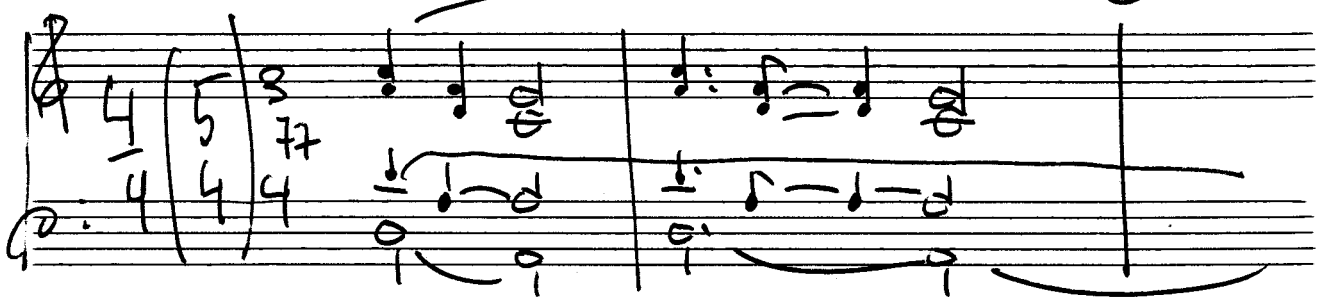
Handwritten musical notation for the first system, consisting of two staves. The upper staff contains notes with accidentals (sharps and naturals) and dynamic markings such as *mf* and *ff*. The lower staff contains notes with accidentals and dynamic markings like *mf* and *ff*. A circled number '5' is written above the second measure of the upper staff.

Handwritten musical notation for the second system, consisting of two staves. The upper staff contains notes with accidentals and dynamic markings like *mf* and *ff*. The lower staff contains notes with accidentals and dynamic markings like *mf* and *ff*. A circled number '5' is written above the second measure of the upper staff.

Handwritten musical notation for the third system, consisting of two staves. The upper staff contains notes with accidentals and dynamic markings like *mf* and *ff*. The lower staff contains notes with accidentals and dynamic markings like *mf* and *ff*. A circled number '5' is written above the second measure of the upper staff. The word "Fine" is written at the end of the system.



breit



④

⑤

(26 + ev. rit.)

Fine

5

Handwritten musical notation for the first system. It consists of a treble clef and a bass clef. The key signature has one sharp (F#) and the time signature is 4/4. The notation includes chords and a melodic line with the word "frei" written above it.

Handwritten musical notation for the second system. It features a treble clef and a melodic line with the word "accel." written above it. A circled number "2" is at the end of the line.

Handwritten musical notation for the third system. It features a treble clef and a melodic line with the word "rit." written below it. A circled number "2" is at the end of the line.

Handwritten musical notation for the first system. It consists of two staves. The upper staff has a treble clef and a key signature of one sharp (F#). The lower staff has a bass clef. The notation includes several chords and a circled number '3' above the second measure. The piece concludes with a double bar line and the initials 'G.P.' written to the right.

Handwritten musical notation for the second system. It consists of two staves. The upper staff has a treble clef and a key signature of one sharp (F#). The lower staff has a bass clef. The notation shows a melodic line in the upper staff with the annotation 'sehr ruhig' (very calm) written above it. The piece begins with a circled number '4' and a dynamic marking 'p'.

Handwritten musical notation for the third system. It consists of two staves. The upper staff has a treble clef and a key signature of one sharp (F#). The lower staff has a bass clef. The notation shows a melodic line in the upper staff with a circled number '4' above it. The piece concludes with a double bar line and the initials 'D.C. al' written to the right.

Handwritten musical notation for the fourth system. It consists of two staves. The upper staff has a treble clef and a key signature of two sharps (F# and C#). The lower staff has a bass clef. The notation shows a treble clef, a key signature of two sharps, and the word 'Fine' written above the notes. The piece concludes with a double bar line.

Handwritten musical notation for the first system. The treble staff begins with a treble clef, a key signature of one sharp (F#), and a common time signature (C). It contains a melodic line with several notes and rests. The bass staff contains a bass clef, a common time signature, and notes with some handwritten markings.

Handwritten musical notation for the second system, marked with a circled number 4. The treble staff has a treble clef, a key signature of one sharp, and a common time signature. The bass staff contains a bass clef, a common time signature, and notes with rests. The instruction "(2te + rit)" is written below the bass staff.

Handwritten musical notation for the third system, marked with a circled number 5. The treble staff has a treble clef and a common time signature. The bass staff has a bass clef and a common time signature. The instruction "rit" is written above the bass staff.

Handwritten musical notation for the fourth system. The treble staff has a treble clef and a common time signature. The bass staff has a bass clef and a key signature of one sharp. The instruction "fine" is written above the treble staff.

Handwritten circled number 7

Allegro (auf 3)

(3+)

Handwritten circled number 1

Handwritten musical notation for the first system. Treble clef, 6/4 time signature, dynamic *f*. The melody consists of eighth and quarter notes. The bass line has rests. A slur covers the first two measures.

Empty musical staves for the second system.

Handwritten circled number 2

Handwritten musical notation for the second system. Treble clef. The melody continues with eighth and quarter notes. The bass line features chords with tremolos. A slur covers the first two measures.

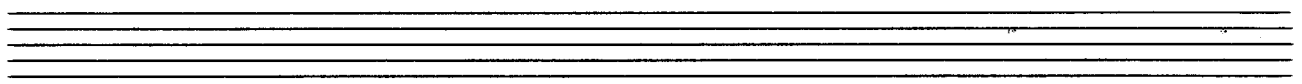
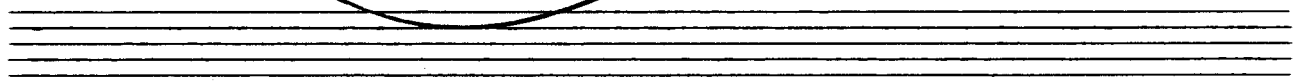
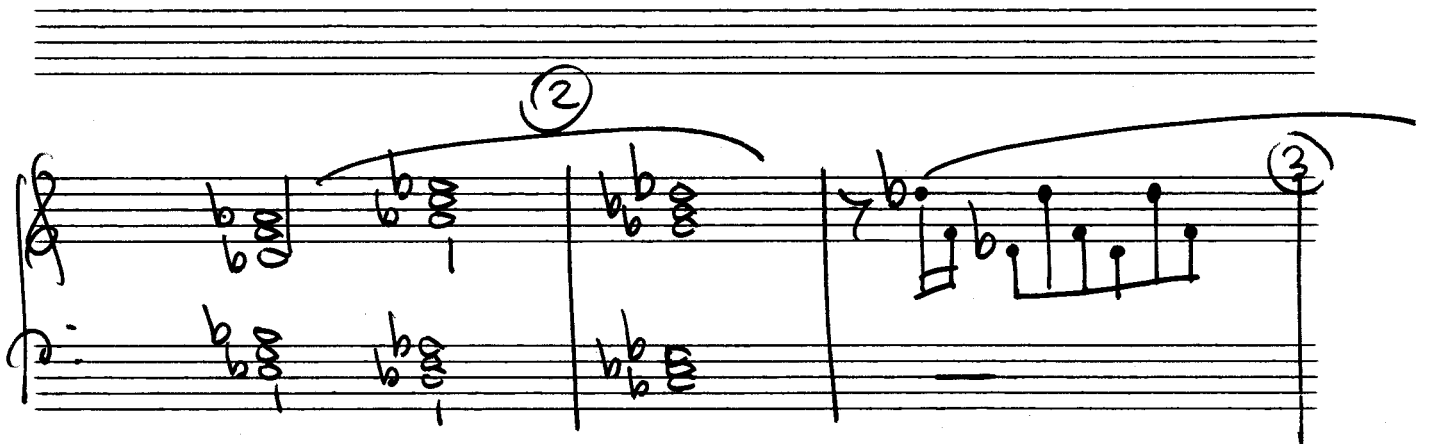
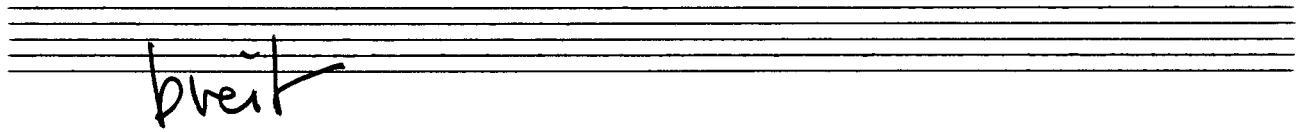
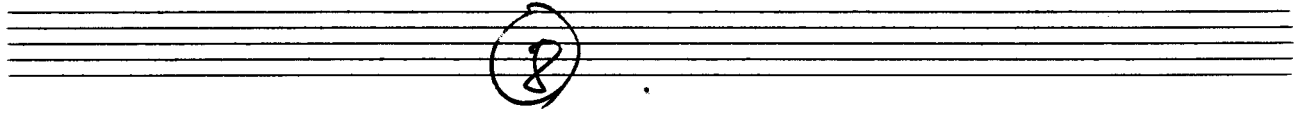
Empty musical staves for the third system.

Handwritten musical notation for the third system. Treble clef. The melody continues with eighth and quarter notes, including some accidentals. The bass line has rests. A slur covers the first two measures.

Empty musical staves for the fourth system.

Empty musical staves for the fifth system.

③



④

Handwritten musical notation for system 4, measures 1-2. The right hand has a melodic line with a slur and a fermata. The left hand has a bass line with a slur and a fermata.

⑤

Handwritten musical notation for system 5, measures 3-4. The right hand has a melodic line with a slur and a fermata. The left hand has a bass line with a slur and a fermata.

⑥

⑦

Handwritten musical notation for system 6, measures 5-6. The right hand has a melodic line with a slur and a fermata. The left hand has a bass line with a slur and a fermata.

⑧

Handwritten musical notation for system 7, measures 7-8. The right hand has a melodic line with a slur and a fermata. The left hand has a bass line with a slur and a fermata. The word "attacca" is written in the right hand.

2(B)

Presto

Handwritten musical notation for the first system. It features a treble clef with a circled sharp sign (#) and a 2/2 time signature. The melody consists of quarter and eighth notes, with a circled sharp sign (#) above the first measure. The bass line has whole notes. A large slur covers the entire system.

①

Handwritten musical notation for the second system, marked with a circled 1. The melody continues with quarter and eighth notes, including a circled sharp sign (#) and a circled flat sign (b). The bass line has whole notes. A large slur covers the entire system.

②

Handwritten musical notation for the third system, marked with a circled 2. The melody continues with quarter and eighth notes, including a circled flat sign (b). The bass line has whole notes. A large slur covers the entire system.

③

Handwritten musical notation for the fourth system, marked with a circled 3. The melody continues with quarter and eighth notes. The bass line has whole notes. A large slur covers the entire system.

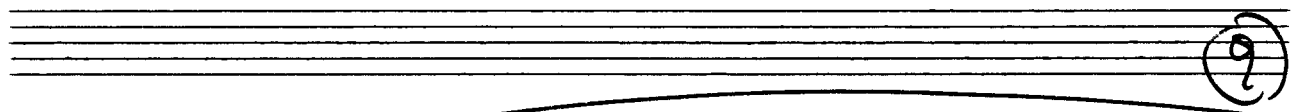
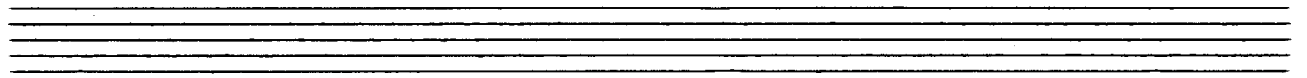
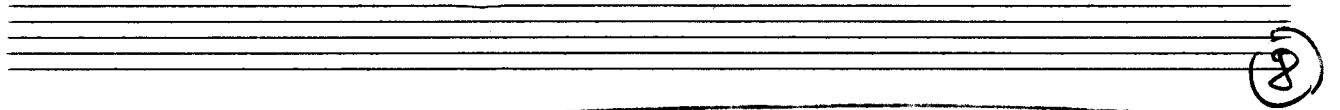
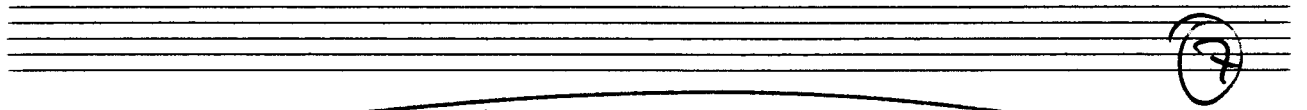
Handwritten musical notation for the first system. The treble clef staff contains a melodic line with a slur over the first two measures and a fermata over the third. The bass clef staff contains a simple accompaniment with a fermata in the first measure.

Handwritten musical notation for the second system. The treble clef staff contains a melodic line with a slur over the first two measures and a fermata over the third. The bass clef staff contains a simple accompaniment with a fermata in the first measure.

Handwritten musical notation for the third system. The treble clef staff contains a melodic line with a slur over the first two measures and a fermata over the third. The bass clef staff contains a simple accompaniment with a fermata in the first measure.

A single staff of handwritten musical notation with a circled number 5 at the end.

Handwritten musical notation for the fourth system. The treble clef staff contains a melodic line with a slur over the first two measures and a fermata over the third. The bass clef staff contains a simple accompaniment with a fermata in the first measure.



⑨

⑩

Handwritten musical notation for measures 11 and 12. Measure 11 shows a treble clef with a whole note chord (F#4, A4, C5) and a bass clef with a whole note chord (F#2, A2, C3). Measure 12 shows a treble clef with a whole note chord (F#4, A4, C5) and a bass clef with a whole note chord (F#2, A2, C3).

Handwritten musical notation for measures 13 and 14. Measure 13 shows a treble clef with a whole note chord (F#4, A4, C5) and a bass clef with a whole note chord (F#2, A2, C3). Measure 14 shows a treble clef with a whole note chord (F#4, A4, C5) and a bass clef with a whole note chord (F#2, A2, C3).

Handwritten musical notation for measures 15 and 16. Measure 15 shows a treble clef with a whole note chord (F#4, A4, C5) and a bass clef with a whole note chord (F#2, A2, C3). Measure 16 shows a treble clef with a whole note chord (F#4, A4, C5) and a bass clef with a whole note chord (F#2, A2, C3).

Handwritten musical notation for measures 17 and 18. Measure 17 shows a treble clef with a whole note chord (F#4, A4, C5) and a bass clef with a whole note chord (F#2, A2, C3). Measure 18 shows a treble clef with a whole note chord (F#4, A4, C5) and a bass clef with a whole note chord (F#2, A2, C3).

13

Handwritten musical notation for measures 13 and 14. The system consists of two staves. The upper staff is in treble clef and the lower staff is in bass clef. Both staves are marked with a common time signature 'C'. A large slur covers both staves across the two measures. The notes are mostly quarter notes with some accidentals (sharps and naturals). A fermata is written above the first measure.

Handwritten musical notation for measures 15 and 16. The system consists of two staves. The upper staff is in treble clef and the lower staff is in bass clef. Both staves are marked with a common time signature 'C'. A large slur covers both staves across the two measures. The notes are mostly quarter notes with some accidentals. A circled measure number '16' is written at the end of the system.

Handwritten musical notation for measures 17 and 18. The system consists of two staves. The upper staff is in treble clef and the lower staff is in bass clef. Both staves are marked with a common time signature 'C'. A large slur covers both staves across the two measures. The notes are mostly quarter notes with some accidentals.

15

Handwritten musical notation for measures 19 and 20. The system consists of two staves. The upper staff is in treble clef and the lower staff is in bass clef. Both staves are marked with a common time signature 'C'. A large slur covers both staves across the two measures. The notes are mostly quarter notes with some accidentals.

16

Handwritten musical notation for measure 16. The treble staff contains a melodic line with a slur over the first three notes. The bass staff contains a harmonic accompaniment with chords and a slur over the first two notes.

17

Handwritten musical notation for measure 17. The treble staff contains a melodic line with a slur over the first three notes. The bass staff contains a harmonic accompaniment with chords and a slur over the first two notes.

Handwritten musical notation for measure 18. The treble staff contains a melodic line with a slur over the first three notes. The bass staff contains a harmonic accompaniment with chords and a slur over the first two notes.

Handwritten musical notation for measure 19. The treble staff contains a melodic line with a slur over the first three notes. The bass staff contains a harmonic accompaniment with chords and a slur over the first two notes.

25

Handwritten musical notation for the first system. The treble staff contains a melodic line with eighth notes and a slur. The bass staff contains a rhythmic accompaniment with chords and a slash in the second measure.

Handwritten musical notation for the second system. The treble staff continues the melodic line. The bass staff continues the accompaniment. A circled measure number '28' is written at the end of the system.

Handwritten musical notation for the third system. The treble staff features a melodic line with a slur and a flat sign. The bass staff features a rhythmic accompaniment with chords and a slur.

Handwritten musical notation for the fourth system. The treble staff features a melodic line with a slur and a flat sign. The bass staff features a rhythmic accompaniment with chords and a slur. A circled measure number '29' is written at the end of the system.

G. P.