

Meßlieder und
Choralvariationen
für gr. Orgel
August 1960 Wien
Adolf Scherbaum
Notenheft

Meßlieder

für gr. Orgel

Wien August 1860

Adolf Scherbaum

Kyrie.

Hier liegt von deiner Majestät

Handwritten musical score for the first system, featuring a treble and bass staff with various notes, rests, and accidentals.

Kyrie

Handwritten musical score for the second system, including a common time signature 'C' and complex melodic lines in both staves.

Handwritten musical score for the third system, showing a continuation of the melodic and harmonic material.

Handwritten musical score for the fourth system, featuring more intricate melodic passages and harmonic support.

Handwritten musical score for the fifth system, consisting of a few final notes and rests in both staves.

Evangelium

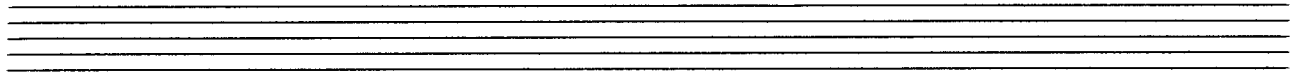
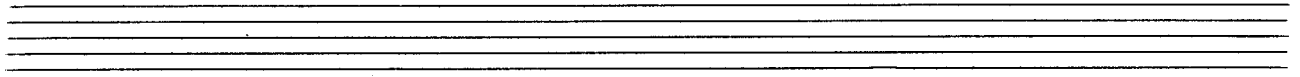
5

Kredo

Handwritten musical notation for the first system. It consists of two staves. The upper staff is in treble clef and contains a melodic line with various note values, including quarter and eighth notes, and rests. The lower staff is in bass clef and contains a harmonic accompaniment with chords and single notes. A large slur encompasses the entire system.

Handwritten musical notation for the second system. It consists of two staves. The upper staff continues the melodic line from the first system. The lower staff continues the harmonic accompaniment. A large slur encompasses the entire system.

Handwritten musical notation for the third system. It consists of two staves. The upper staff continues the melodic line. The lower staff continues the harmonic accompaniment. A large slur encompasses the entire system.



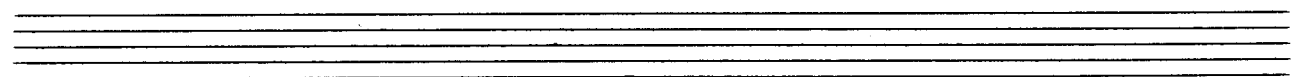
Handwritten musical score for the first system, featuring a treble and bass clef with various notes and rests.

Kredo

Handwritten musical score for the second system, including a common time signature 'C' and complex rhythmic patterns.

Handwritten musical score for the third system, showing melodic lines and harmonic accompaniment.

Handwritten musical score for the fourth system, concluding with a double bar line.



Offertorium

Handwritten musical notation for the first system. The top staff is in treble clef with a 3/4 time signature. The bottom staff is in bass clef. The music features a melodic line in the treble and a harmonic accompaniment in the bass. The key signature has one sharp (F#). The system concludes with a double bar line.

Handwritten musical notation for the second system. The notation continues from the first system, showing melodic development in the treble and harmonic support in the bass. The system ends with a double bar line.

Handwritten musical notation for the third system. This system includes a repeat sign (double bar line with dots) in the middle of the treble staff, indicating a first ending. The music continues with melodic and harmonic elements.

Handwritten musical notation for the fourth system. The melodic line in the treble staff features a long, sweeping phrase that spans across the system. The bass staff provides a steady accompaniment. The system concludes with a double bar line.

offertorium

9

Sanktus

Handwritten musical notation for the first system of 'Sanktus'. It consists of two staves. The upper staff is in treble clef and contains a melodic line with various note values, including quarter and eighth notes, and rests. The lower staff is in bass clef and contains a harmonic accompaniment with chords and moving lines. The key signature has two sharps (F# and C#), and the time signature is common time (C). The system concludes with a double bar line and repeat dots.

Handwritten musical notation for the second system of 'Sanktus'. It consists of two staves. The upper staff continues the melodic line from the first system. The lower staff continues the harmonic accompaniment. There are some handwritten annotations in the lower staff, including a wavy line and a sharp sign ($\#$) under a note. The system concludes with a double bar line and repeat dots.

Handwritten musical notation for the third system of 'Sanktus'. It consists of two staves. The upper staff continues the melodic line. The lower staff continues the harmonic accompaniment. There are some handwritten annotations, including a wavy line and a sharp sign ($\#$) under a note. The system concludes with a double bar line and repeat dots.

11

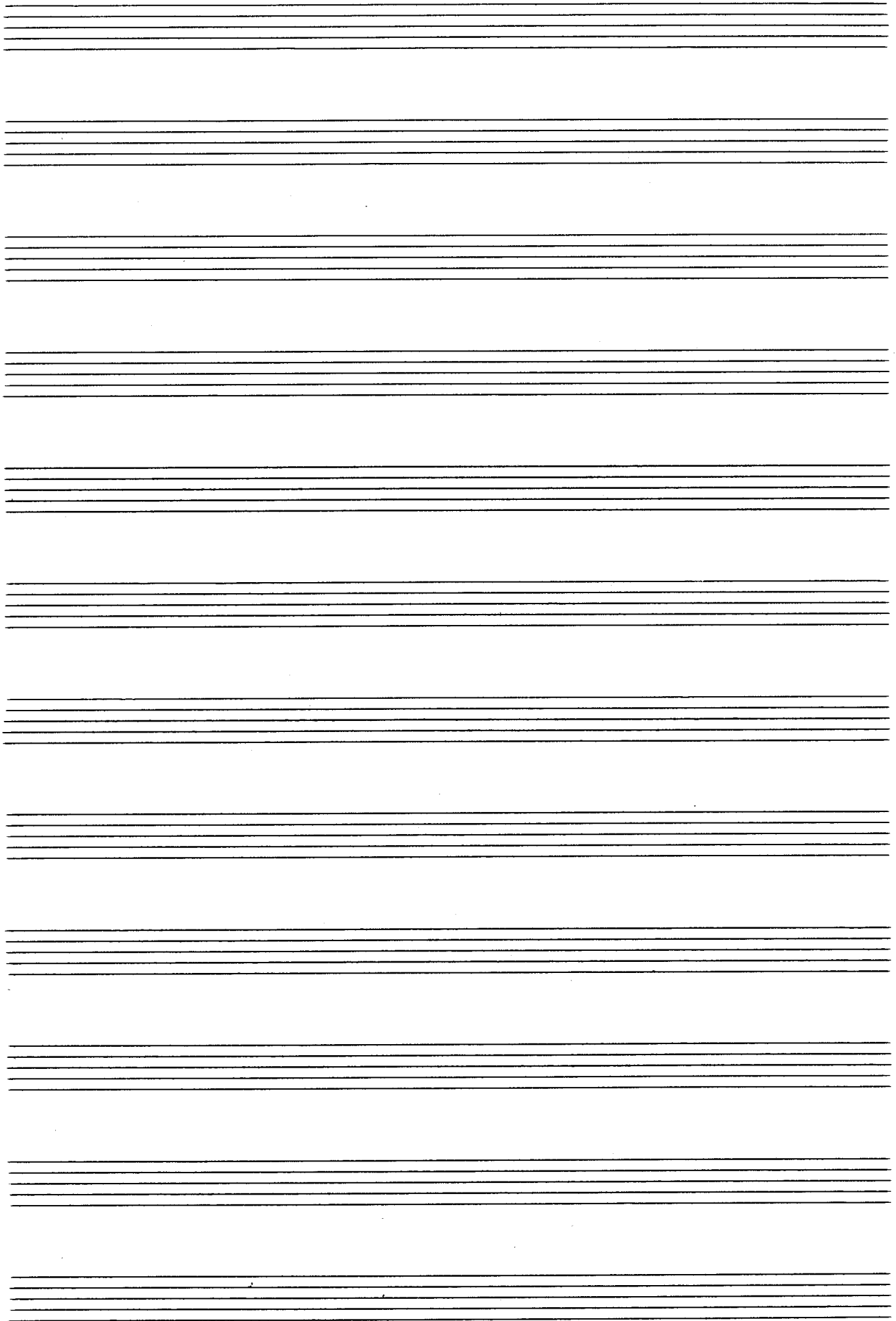
Nach der Wandlung

Handwritten musical notation for the first system, featuring a treble and bass staff with a 3/4 time signature and a key signature of one sharp (F#). The music includes various note values and rests, with a fermata over the final measure.

Handwritten musical notation for the second system, continuing the piece with a treble and bass staff. It includes a repeat sign and a fermata over the final measure.

Handwritten musical notation for the third system, featuring a treble and bass staff with a repeat sign and a fermata over the final measure.

Handwritten musical notation for the fourth system, featuring a treble and bass staff with a repeat sign and a fermata over the final measure.



13

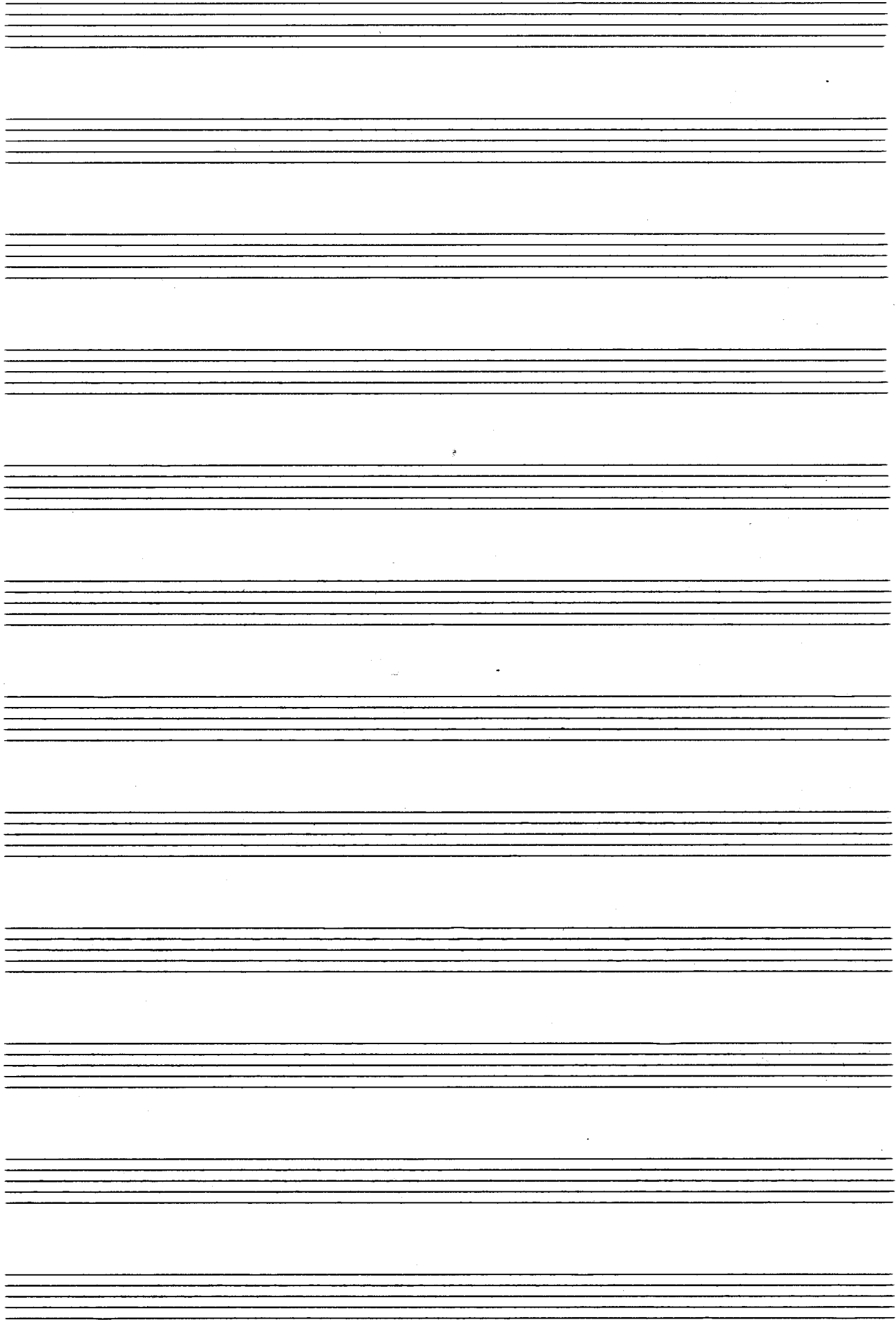
Agnus Dei

Handwritten musical notation for the first system of 'Agnus Dei'. It consists of two staves: a treble clef staff and a bass clef staff. The treble staff contains a melodic line with various note values and rests, including a fermata. The bass staff contains a harmonic accompaniment with chords and moving lines. The key signature has one flat (B-flat).

Handwritten musical notation for the second system of 'Agnus Dei'. It consists of two staves: a treble clef staff and a bass clef staff. The treble staff continues the melodic line with a fermata. The bass staff continues the harmonic accompaniment. The key signature has one flat (B-flat).

Handwritten musical notation for the third system of 'Agnus Dei'. It consists of two staves: a treble clef staff and a bass clef staff. The treble staff continues the melodic line with a fermata. The bass staff continues the harmonic accompaniment. The key signature has one flat (B-flat).

Handwritten musical notation for the fourth system of 'Agnus Dei'. It consists of two staves: a treble clef staff and a bass clef staff. The treble staff continues the melodic line with a fermata. The bass staff continues the harmonic accompaniment. The key signature has one flat (B-flat).



Choral mit
Variationen

Wien August 1960

Adolf Scherbaum
fr. Orgel

Choral.

I.

Handwritten musical notation for the first system. It consists of two staves. The upper staff is in treble clef with a key signature of two flats (B-flat and E-flat) and a 2/4 time signature. It contains a melodic line with a dynamic marking of *pp* (pianissimo) at the beginning. The lower staff is in bass clef with the same key signature and time signature, featuring a complex, rhythmic accompaniment with many beamed notes and some accidentals.

Handwritten musical notation for the second system, continuing the piece. It follows the same two-staff format as the first system, with a melodic line in the upper staff and a complex accompaniment in the lower staff.

Handwritten musical notation for the third system, continuing the piece. It follows the same two-staff format as the first system, with a melodic line in the upper staff and a complex accompaniment in the lower staff.

Handwritten musical notation for the fourth system, concluding the piece. It follows the same two-staff format as the first system, with a melodic line in the upper staff and a complex accompaniment in the lower staff. The system ends with a double bar line.

ff

Sehr ruhig

Handwritten musical score for the first system. It consists of a grand staff with a treble clef on the upper staff and a bass clef on the lower staff. The time signature is common time (C). The music begins with a piano (*pp*) dynamic marking. The upper staff contains a melodic line with a long slur over it, while the lower staff provides a harmonic accompaniment. The system concludes with a fermata over the final note.

Handwritten musical score for the second system. It continues the piece with a similar grand staff structure. The melodic line in the upper staff is highly active with many sixteenth notes. The system ends with a circled number '1' in the right margin, indicating a first ending or a specific measure.

Handwritten musical score for the third system. The notation continues in the grand staff. The upper staff features a complex melodic pattern with many sixteenth notes. The system concludes with a fermata over the final note.

Handwritten musical score for the fourth system. It continues the piece. The upper staff has a melodic line with a fermata over the final note. The lower staff has a bass line with a fermata. The system ends with a circled number '2' in the right margin, indicating a second ending or a specific measure. The final notes are marked with a double bar line and a fermata.

Handwritten musical notation for the first system, featuring a treble and bass staff with complex chordal textures and melodic lines.

Handwritten musical notation for the second system, including a circled number '3' at the end of the treble staff.

Handwritten musical notation for the third system, showing melodic development and harmonic changes.

Handwritten musical notation for the fourth system, concluding with a circled number '4' and a double bar line.

rit.

III .

sehr langsam (ruhig)

Handwritten musical notation for the first system. It consists of two staves: a treble clef staff and a bass clef staff. The treble staff begins with a treble clef, a key signature of two flats (B-flat and E-flat), and a 4/4 time signature. A circled 'P' is written below the treble staff. The music includes a series of eighth and sixteenth notes, some beamed together, and rests. A long slur covers the entire system. The bass staff contains mostly whole notes and rests.

Empty musical staff lines.

Handwritten musical notation for the second system. It consists of two staves: a treble clef staff and a bass clef staff. The treble staff continues with eighth and sixteenth notes, some beamed together, and rests. A long slur covers the entire system. The bass staff contains mostly whole notes and rests.

Empty musical staff lines.

Handwritten musical notation for the third system. It consists of two staves: a treble clef staff and a bass clef staff. The treble staff continues with eighth and sixteenth notes, some beamed together, and rests. A long slur covers the entire system. The bass staff contains mostly whole notes and rests.

Empty musical staff lines.

Handwritten musical notation for the fourth system. It consists of two staves: a treble clef staff and a bass clef staff. The treble staff begins with a treble clef, a key signature of two flats, and a 4/4 time signature. It contains a few notes and rests. A double bar line is present. The bass staff contains mostly whole notes and rests.

breit (ausspielen) III c (auch als Finale) dann daqui
 (bei ersten 8 Takte Fußpedale)

(nur bei Finale
 8 Takte daqui)

①

②

letzte + ev. mit

Fine (3)

als Schluss
probes mit mit Schlussakkord aushalten)

4

D.C.

??

Allegro

V.

Handwritten musical notation for the first system, measures 1-4. It features a treble and bass clef with a 6/8 time signature. The music includes a forte (f) dynamic marking and a circled number 1 at the end of the system.

Handwritten musical notation for the second system, measures 5-8. It continues the piece with a circled number 2 at the end of the system.

Handwritten musical notation for the third system, measures 9-12. It continues the piece with a circled number 3 at the end of the system.

Handwritten musical notation for the fourth system, measures 13-16. It concludes the piece with a circled number 4 at the end of the system.

Handwritten musical notation for the first system, measures 5-8. The notation includes a treble and bass staff with notes, rests, and accidentals. A circled "Fin" and a circled "5" are present above the first measure. A large slur covers the entire system.

Handwritten musical notation for the second system, measures 9-12. The notation includes a treble and bass staff with notes, rests, and accidentals. A circled "6" is above the first measure and a circled "7" is at the end of the system. A large slur covers the entire system.

Handwritten musical notation for the third system, measures 13-16. The notation includes a treble and bass staff with notes, rests, and accidentals. A circled "8" is at the end of the system. A large slur covers the entire system.

Handwritten musical notation for the fourth system, measures 17-20. The notation includes a treble and bass staff with notes, rests, and accidentals. A circled "9" is at the end of the system. The text "D.C." is written to the right of the system. A large slur covers the entire system.

VI

breit

Handwritten musical notation for the first system, featuring a grand staff with treble and bass clefs. The music consists of several measures with notes and rests, including a sharp sign in the treble clef.

Handwritten musical notation for the second system, featuring a grand staff with treble and bass clefs. The music consists of several measures with notes and rests, including a sharp sign in the treble clef.

Handwritten musical notation for the third system, featuring a grand staff with treble and bass clefs. The music consists of several measures with notes and rests, including a sharp sign in the treble clef.

Handwritten musical notation for the fourth system, featuring a grand staff with treble and bass clefs. The music consists of several measures with notes and rests, including a sharp sign in the treble clef.

VIII. ist gleich

IV. (aber sehr zügig)
feierlich.

(IV) Variation
al fine

1960 A. Scherbaum
Wien August.