



bitte MATERIAL schonen

SONATE (in 3 Teilen)

für große Orgel

1961

Adolf Scherbaum.

Teil I.

sehr ruhig

Handwritten musical notation for the first system of 'Teil I'. It consists of a treble clef staff and a bass clef staff. The treble staff begins with a treble clef, a 4/4 time signature, and a circled 'P' (piano) dynamic marking. The melody starts with a quarter note G4 with a sharp sign, followed by quarter notes A4, B4, and C5. The bass staff contains whole notes: G2, C3, and G2. A large slur covers the entire system.

Handwritten musical notation for the second system of 'Teil I'. It consists of a treble clef staff and a bass clef staff. The treble staff continues the melody with quarter notes D5, E5, F5, and G5. The bass staff contains whole notes: C3, G2, and C3. A large slur covers the entire system.

Handwritten musical notation for the third system of 'Teil I'. It consists of a treble clef staff and a bass clef staff. The treble staff continues the melody with quarter notes A5, B5, C6, and B5. The bass staff contains whole notes: D3, G2, and D3. A large slur covers the entire system.

Handwritten musical notation for the fourth system of 'Teil I'. It consists of a treble clef staff and a bass clef staff. The treble staff continues the melody with quarter notes A5, B5, C6, and B5. The bass staff contains whole notes: D3, G2, and D3. A large slur covers the entire system.

Handwritten musical notation for the first system. The treble clef staff contains notes: G4, A4, B4, C5, B4, A4, G4, F4, E4, D4, C4. The bass clef staff contains notes: G3, F3, E3, D3, C3, B2, A2, G2. A slur covers the first two measures of the treble staff.

Handwritten musical notation for the second system. The treble clef staff contains notes: G4, A4, B4, C5, B4, A4, G4, F4, E4, D4, C4. The bass clef staff contains notes: G3, F3, E3, D3, C3, B2, A2, G2. A slur covers the first two measures of the treble staff.

Handwritten musical notation for the third system. The treble clef staff contains notes: G4, A4, B4, C5, B4, A4, G4, F4, E4, D4, C4. The bass clef staff contains notes: G3, F3, E3, D3, C3, B2, A2, G2. A slur covers the first two measures of the treble staff.

Handwritten musical notation for the fourth system. The treble clef staff contains notes: G4, A4, B4, C5, B4, A4, G4, F4, E4, D4, C4. The bass clef staff contains notes: G3, F3, E3, D3, C3, B2, A2, G2. A slur covers the first two measures of the treble staff.

Handwritten musical notation for the first system. The treble staff contains a melodic line with notes: G#4, A4, Bb4, C5, D5, E5, F#5, G#5, A5, Bb5, C6, D6, E6, F#6, G#6, A6, Bb6, C7. The bass staff contains a bass line with notes: G2, F#2, E2, D2, C2, B1, A1, G1, F#1, E1, D1, C1, B0, A0, G0, F#0, E0, D0, C0, B-1, A-1, G-1, F#-1, E-1, D-1, C-1, B-2, A-2, G-2, F#-2, E-2, D-2, C-2, B-3, A-3, G-3, F#-3, E-3, D-3, C-3, B-4, A-4, G-4, F#-4, E-4, D-4, C-4, B-5, A-5, G-5, F#-5, E-5, D-5, C-5, B-6, A-6, G-6, F#-6, E-6, D-6, C-6, B-7, A-7, G-7, F#-7, E-7, D-7, C-7, B-8, A-8, G-8, F#-8, E-8, D-8, C-8, B-9, A-9, G-9, F#-9, E-9, D-9, C-9, B-10, A-10, G-10, F#-10, E-10, D-10, C-10, B-11, A-11, G-11, F#-11, E-11, D-11, C-11, B-12, A-12, G-12, F#-12, E-12, D-12, C-12, B-13, A-13, G-13, F#-13, E-13, D-13, C-13, B-14, A-14, G-14, F#-14, E-14, D-14, C-14, B-15, A-15, G-15, F#-15, E-15, D-15, C-15, B-16, A-16, G-16, F#-16, E-16, D-16, C-16, B-17, A-17, G-17, F#-17, E-17, D-17, C-17, B-18, A-18, G-18, F#-18, E-18, D-18, C-18, B-19, A-19, G-19, F#-19, E-19, D-19, C-19, B-20, A-20, G-20, F#-20, E-20, D-20, C-20, B-21, A-21, G-21, F#-21, E-21, D-21, C-21, B-22, A-22, G-22, F#-22, E-22, D-22, C-22, B-23, A-23, G-23, F#-23, E-23, D-23, C-23, B-24, A-24, G-24, F#-24, E-24, D-24, C-24, B-25, A-25, G-25, F#-25, E-25, D-25, C-25, B-26, A-26, G-26, F#-26, E-26, D-26, C-26, B-27, A-27, G-27, F#-27, E-27, D-27, C-27, B-28, A-28, G-28, F#-28, E-28, D-28, C-28, B-29, A-29, G-29, F#-29, E-29, D-29, C-29, B-30, A-30, G-30, F#-30, E-30, D-30, C-30, B-31, A-31, G-31, F#-31, E-31, D-31, C-31, B-32, A-32, G-32, F#-32, E-32, D-32, C-32, B-33, A-33, G-33, F#-33, E-33, D-33, C-33, B-34, A-34, G-34, F#-34, E-34, D-34, C-34, B-35, A-35, G-35, F#-35, E-35, D-35, C-35, B-36, A-36, G-36, F#-36, E-36, D-36, C-36, B-37, A-37, G-37, F#-37, E-37, D-37, C-37, B-38, A-38, G-38, F#-38, E-38, D-38, C-38, B-39, A-39, G-39, F#-39, E-39, D-39, C-39, B-40, A-40, G-40, F#-40, E-40, D-40, C-40, B-41, A-41, G-41, F#-41, E-41, D-41, C-41, B-42, A-42, G-42, F#-42, E-42, D-42, C-42, B-43, A-43, G-43, F#-43, E-43, D-43, C-43, B-44, A-44, G-44, F#-44, E-44, D-44, C-44, B-45, A-45, G-45, F#-45, E-45, D-45, C-45, B-46, A-46, G-46, F#-46, E-46, D-46, C-46, B-47, A-47, G-47, F#-47, E-47, D-47, C-47, B-48, A-48, G-48, F#-48, E-48, D-48, C-48, B-49, A-49, G-49, F#-49, E-49, D-49, C-49, B-50, A-50, G-50, F#-50, E-50, D-50, C-50, B-51, A-51, G-51, F#-51, E-51, D-51, C-51, B-52, A-52, G-52, F#-52, E-52, D-52, C-52, B-53, A-53, G-53, F#-53, E-53, D-53, C-53, B-54, A-54, G-54, F#-54, E-54, D-54, C-54, B-55, A-55, G-55, F#-55, E-55, D-55, C-55, B-56, A-56, G-56, F#-56, E-56, D-56, C-56, B-57, A-57, G-57, F#-57, E-57, D-57, C-57, B-58, A-58, G-58, F#-58, E-58, D-58, C-58, B-59, A-59, G-59, F#-59, E-59, D-59, C-59, B-60, A-60, G-60, F#-60, E-60, D-60, C-60, B-61, A-61, G-61, F#-61, E-61, D-61, C-61, B-62, A-62, G-62, F#-62, E-62, D-62, C-62, B-63, A-63, G-63, F#-63, E-63, D-63, C-63, B-64, A-64, G-64, F#-64, E-64, D-64, C-64, B-65, A-65, G-65, F#-65, E-65, D-65, C-65, B-66, A-66, G-66, F#-66, E-66, D-66, C-66, B-67, A-67, G-67, F#-67, E-67, D-67, C-67, B-68, A-68, G-68, F#-68, E-68, D-68, C-68, B-69, A-69, G-69, F#-69, E-69, D-69, C-69, B-70, A-70, G-70, F#-70, E-70, D-70, C-70, B-71, A-71, G-71, F#-71, E-71, D-71, C-71, B-72, A-72, G-72, F#-72, E-72, D-72, C-72, B-73, A-73, G-73, F#-73, E-73, D-73, C-73, B-74, A-74, G-74, F#-74, E-74, D-74, C-74, B-75, A-75, G-75, F#-75, E-75, D-75, C-75, B-76, A-76, G-76, F#-76, E-76, D-76, C-76, B-77, A-77, G-77, F#-77, E-77, D-77, C-77, B-78, A-78, G-78, F#-78, E-78, D-78, C-78, B-79, A-79, G-79, F#-79, E-79, D-79, C-79, B-80, A-80, G-80, F#-80, E-80, D-80, C-80, B-81, A-81, G-81, F#-81, E-81, D-81, C-81, B-82, A-82, G-82, F#-82, E-82, D-82, C-82, B-83, A-83, G-83, F#-83, E-83, D-83, C-83, B-84, A-84, G-84, F#-84, E-84, D-84, C-84, B-85, A-85, G-85, F#-85, E-85, D-85, C-85, B-86, A-86, G-86, F#-86, E-86, D-86, C-86, B-87, A-87, G-87, F#-87, E-87, D-87, C-87, B-88, A-88, G-88, F#-88, E-88, D-88, C-88, B-89, A-89, G-89, F#-89, E-89, D-89, C-89, B-90, A-90, G-90, F#-90, E-90, D-90, C-90, B-91, A-91, G-91, F#-91, E-91, D-91, C-91, B-92, A-92, G-92, F#-92, E-92, D-92, C-92, B-93, A-93, G-93, F#-93, E-93, D-93, C-93, B-94, A-94, G-94, F#-94, E-94, D-94, C-94, B-95, A-95, G-95, F#-95, E-95, D-95, C-95, B-96, A-96, G-96, F#-96, E-96, D-96, C-96, B-97, A-97, G-97, F#-97, E-97, D-97, C-97, B-98, A-98, G-98, F#-98, E-98, D-98, C-98, B-99, A-99, G-99, F#-99, E-99, D-99, C-99, B-100, A-100, G-100, F#-100, E-100, D-100, C-100, B-101, A-101, G-101, F#-101, E-101, D-101, C-101, B-102, A-102, G-102, F#-102, E-102, D-102, C-102, B-103, A-103, G-103, F#-103, E-103, D-103, C-103, B-104, A-104, G-104, F#-104, E-104, D-104, C-104, B-105, A-105, G-105, F#-105, E-105, D-105, C-105, B-106, A-106, G-106, F#-106, E-106, D-106, C-106, B-107, A-107, G-107, F#-107, E-107, D-107, C-107, B-108, A-108, G-108, F#-108, E-108, D-108, C-108, B-109, A-109, G-109, F#-109, E-109, D-109, C-109, B-110, A-110, G-110, F#-110, E-110, D-110, C-110, B-111, A-111, G-111, F#-111, E-111, D-111, C-111, B-112, A-112, G-112, F#-112, E-112, D-112, C-112, B-113, A-113, G-113, F#-113, E-113, D-113, C-113, B-114, A-114, G-114, F#-114, E-114, D-114, C-114, B-115, A-115, G-115, F#-115, E-115, D-115, C-115, B-116, A-116, G-116, F#-116, E-116, D-116, C-116, B-117, A-117, G-117, F#-117, E-117, D-117, C-117, B-118, A-118, G-118, F#-118, E-118, D-118, C-118, B-119, A-119, G-119, F#-119, E-119, D-119, C-119, B-120, A-120, G-120, F#-120, E-120, D-120, C-120, B-121, A-121, G-121, F#-121, E-121, D-121, C-121, B-122, A-122, G-122, F#-122, E-122, D-122, C-122, B-123, A-123, G-123, F#-123, E-123, D-123, C-123, B-124, A-124, G-124, F#-124, E-124, D-124, C-124, B-125, A-125, G-125, F#-125, E-125, D-125, C-125, B-126, A-126, G-126, F#-126, E-126, D-126, C-126, B-127, A-127, G-127, F#-127, E-127, D-127, C-127, B-128, A-128, G-128, F#-128, E-128, D-128, C-128, B-129, A-129, G-129, F#-129, E-129, D-129, C-129, B-130, A-130, G-130, F#-130, E-130, D-130, C-130, B-131, A-131, G-131, F#-131, E-131, D-131, C-131, B-132, A-132, G-132, F#-132, E-132, D-132, C-132, B-133, A-133, G-133, F#-133, E-133, D-133, C-133, B-134, A-134, G-134, F#-134, E-134, D-134, C-134, B-135, A-135, G-135, F#-135, E-135, D-135, C-135, B-136, A-136, G-136, F#-136, E-136, D-136, C-136, B-137, A-137, G-137, F#-137, E-137, D-137, C-137, B-138, A-138, G-138, F#-138, E-138, D-138, C-138, B-139, A-139, G-139, F#-139, E-139, D-139, C-139, B-140, A-140, G-140, F#-140, E-140, D-140, C-140, B-141, A-141, G-141, F#-141, E-141, D-141, C-141, B-142, A-142, G-142, F#-142, E-142, D-142, C-142, B-143, A-143, G-143, F#-143, E-143, D-143, C-143, B-144, A-144, G-144, F#-144, E-144, D-144, C-144, B-145, A-145, G-145, F#-145, E-145, D-145, C-145, B-146, A-146, G-146, F#-146, E-146, D-146, C-146, B-147, A-147, G-147, F#-147, E-147, D-147, C-147, B-148, A-148, G-148, F#-148, E-148, D-148, C-148, B-149, A-149, G-149, F#-149, E-149, D-149, C-149, B-150, A-150, G-150, F#-150, E-150, D-150, C-150, B-151, A-151, G-151, F#-151, E-151, D-151, C-151, B-152, A-152, G-152, F#-152, E-152, D-152, C-152, B-153, A-153, G-153, F#-153, E-153, D-153, C-153, B-154, A-154, G-154, F#-154, E-154, D-154, C-154, B-155, A-155, G-155, F#-155, E-155, D-155, C-155, B-156, A-156, G-156, F#-156, E-156, D-156, C-156, B-157, A-157, G-157, F#-157, E-157, D-157, C-157, B-158, A-158, G-158, F#-158, E-158, D-158, C-158, B-159, A-159, G-159, F#-159, E-159, D-159, C-159, B-160, A-160, G-160, F#-160, E-160, D-160, C-160, B-161, A-161, G-161, F#-161, E-161, D-161, C-161, B-162, A-162, G-162, F#-162, E-162, D-162, C-162, B-163, A-163, G-163, F#-163, E-163, D-163, C-163, B-164, A-164, G-164, F#-164, E-164, D-164, C-164, B-165, A-165, G-165, F#-165, E-165, D-165, C-165, B-166, A-166, G-166, F#-166, E-166, D-166, C-166, B-167, A-167, G-167, F#-167, E-167, D-167, C-167, B-168, A-168, G-168, F#-168, E-168, D-168, C-168, B-169, A-169, G-169, F#-169, E-169, D-169, C-169, B-170, A-170, G-170, F#-170, E-170, D-170, C-170, B-171, A-171, G-171, F#-171, E-171, D-171, C-171, B-172, A-172, G-172, F#-172, E-172, D-172, C-172, B-173, A-173, G-173, F#-173, E-173, D-173, C-173, B-174, A-174, G-174, F#-174, E-174, D-174, C-174, B-175, A-175, G-175, F#-175, E-175, D-175, C-175, B-176, A-176, G-176, F#-176, E-176, D-176, C-176, B-177, A-177, G-177, F#-177, E-177, D-177, C-177, B-178, A-178, G-178, F#-178, E-178, D-178, C-178, B-179, A-179, G-179, F#-179, E-179, D-179, C-179, B-180, A-180, G-180, F#-180, E-180, D-180, C-180, B-181, A-181, G-181, F#-181, E-181, D-181, C-181, B-182, A-182, G-182, F#-182, E-182, D-182, C-182, B-183, A-183, G-183, F#-183, E-183, D-183, C-183, B-184, A-184, G-184, F#-184, E-184, D-184, C-184, B-185, A-185, G-185, F#-185, E-185, D-185, C-185, B-186, A-186, G-186, F#-186, E-186, D-186, C-186, B-187, A-187, G-187, F#-187, E-187, D-187, C-187, B-188, A-188, G-188, F#-188, E-188, D-188, C-188, B-189, A-189, G-189, F#-189, E-189, D-189, C-189, B-190, A-190, G-190, F#-190, E-190, D-190, C-190, B-191, A-191, G-191, F#-191, E-191, D-191, C-191, B-192, A-192, G-192, F#-192, E-192, D-192, C-192, B-193, A-193, G-193, F#-193, E-193, D-193, C-193, B-194, A-194, G-194, F#-194, E-194, D-194, C-194, B-195, A-195, G-195, F#-195, E-195, D-195, C-195, B-196, A-196, G-196, F#-196, E-196, D-196, C-196, B-197, A-197, G-197, F#-197, E-197, D-197, C-197, B-198, A-198, G-198, F#-198, E-198, D-198, C-198, B-199, A-199, G-199, F#-199, E-199, D-199, C-199, B-200, A-200, G-200, F#-200, E-200, D-200, C-200, B-201, A-201, G-201, F#-201, E-201, D-201, C-201, B-202, A-202, G-202, F#-202, E-202, D-202, C-202, B-203, A-203, G-203, F#-203, E-203, D-203, C-203, B-204, A-204, G-204, F#-204, E-204, D-204, C-204, B-205, A-205, G-205, F#-205, E-205, D-205, C-205, B-206, A-206, G-206, F#-206, E-206, D-206, C-206, B-207, A-207, G-207, F#-207, E-207, D-207, C-207, B-208, A-208, G-208, F#-208, E-208, D-208, C-208, B-209, A-209, G-209, F#-209, E-209, D-209, C-209, B-210, A-210, G-210, F#-210, E-210, D-210, C-210, B-211, A-211, G-211, F#-211, E-211, D-211, C-211, B-212, A-212, G-212, F#-212, E-212, D-212, C-212, B-213, A-213, G-213, F#-213, E-213, D-213, C-213, B-214, A-214, G-214, F#-214, E-214, D-214, C-214, B-215, A-215, G-215, F#-215, E-215, D-215, C-215, B-216, A-216, G-216, F#-216, E-216, D-216, C-216, B-217, A-217, G-217, F#-217, E-217, D-217, C-217, B-218, A-218, G-218, F#-218, E-218, D-218, C-218, B-219, A-219, G-219, F#-219, E-219, D-219, C-219, B-220, A-220, G-220, F#-220, E-220, D-220, C-220, B-221, A-221, G-221, F#-221, E-221, D-221, C-221, B-222, A-222, G-222, F#-222, E-222, D-222, C-222, B-223, A-223, G-223, F#-223, E-223, D-223, C-223, B-224, A-224, G-224, F#-224, E-224, D-224, C-224, B-225, A-225, G-225, F#-225, E-225, D-225, C-225, B-226, A-226, G-226, F#-226, E-226, D-226, C-226, B-227, A-227, G-227, F#-227, E-227, D-227, C-227, B-228, A-228, G-228, F#-228, E-228, D-228, C-228, B-229, A-229, G-229, F#-229, E-229, D-229, C-229, B-230, A-230, G-230, F#-230, E-230, D-230, C-230, B-231, A-231, G-231, F#-231, E-231, D-231, C-231, B-232, A-232, G-232, F#-232, E-232, D-232, C-232, B-233, A-233, G-233, F#-233, E-233, D-233, C-233, B-234, A-234, G-234, F#-234, E-234, D-234, C-234, B-235, A-235, G-235, F#-235, E-235, D-235, C-235, B-236, A-236, G-236, F#-236, E-236, D-236, C-236, B-237, A-237, G-237, F#-237, E-237, D-237, C-237, B-238, A-238, G-238, F#-238, E-238, D-238, C-238, B-239, A-239, G-239, F#-239, E-239, D-239, C-239, B-240, A-240, G-240, F#-240, E-240, D-240, C-240, B-241, A-241, G-241, F#-241, E-241, D-241, C-241, B-242, A-242, G-242, F#-242, E-242, D-242, C-242, B-243, A-243, G-243, F#-243, E-243, D-243, C-243, B-244, A-244, G-244, F#-244, E-244, D-244, C-244, B-245, A-245, G-245, F#-245, E-245, D-245, C-245, B-246, A-246, G-246, F#-246, E-246, D-246, C-246, B-247, A-247, G-247, F#-247, E-247, D-247, C-247, B-248, A-248, G-248, F#-248, E-248, D-248, C-248, B-249, A-249, G-249, F#-249, E-249, D-249, C-249, B-250, A-250, G-250, F#-250, E-250, D-250, C-250, B-251, A-251, G-251, F#-251, E-251, D-251, C-251, B-252, A-252, G-252, F#-252, E-252, D-252, C-252, B-253, A-253, G-253, F#-253, E-253, D-253, C-253, B-254, A-254, G-254, F#-254, E-254, D-254, C-254, B-255, A-255, G-255, F#-255, E-255, D-255, C-255, B-256, A-256, G-256, F#-256, E-256, D-256, C-256, B-257, A-257, G-257, F#-257, E-257, D-257, C-257, B-258, A-258, G-258, F#-258, E-258, D-258, C-258, B-259, A-259, G-259, F#-259, E-259, D-259, C-259, B-260, A-260, G-260, F#-260, E-260, D-260, C-260, B-261, A-261, G-261, F#-261, E-261, D-261, C-261, B-262, A-262, G-262, F#-262, E-262, D-262, C-262, B-263, A-263, G-263, F#-263, E-263, D-263, C-263, B-264, A-264, G-264, F#-264, E-264, D-264, C-264, B-265, A-265, G-265, F#-265, E-265, D-265, C-265, B-266, A-266, G-266, F#-266, E-266, D-266, C-266, B-267, A-267, G-267, F#-267, E-267, D-267, C-267, B-268, A-268, G-268, F#-268, E-268, D-268, C-268, B-269, A-269, G-269, F#-269, E-269, D-269, C-269, B-270, A-270, G-270, F#-270, E-270, D-270, C-270, B-271, A-271, G-271, F#-271, E-271, D-271, C-271, B-272, A-272, G-272, F#-272, E-272, D-272, C-272, B-273, A-273, G-273, F#-273, E-273, D-273, C-273, B-274, A-274, G-274, F#-274, E-274, D-274, C-274, B-275, A-275, G-275, F#-275, E-275, D-275, C-275, B-276, A-276, G-276, F#-276, E-276, D-276, C-276, B-277, A-277, G-277, F#-277, E-277, D-277, C-277, B-278, A-278, G-278, F#-278, E-278, D-278, C-278, B-279, A-279, G-279, F#-279, E-279, D-279, C-279, B-280, A-280, G-280, F#-280, E-280, D-280, C-280, B-281, A-281, G-281, F#-281, E-281, D-281, C-281, B-282, A-282, G-282, F#-282, E-282, D-282, C-282, B-283, A-283, G-283, F#-283, E-283, D-283, C-283, B-284, A-284, G-284, F#-284, E-284, D-284, C-284, B-285, A-285, G-285, F#-285, E-285, D-285, C-285, B-286, A-286, G-286, F#-286, E-286, D-286, C-286, B-287, A-287, G-287, F#-287, E-287, D-287, C-287, B-288, A-288, G-288, F#-288, E-288, D-288, C-288, B-289, A-289, G-289, F#-289, E-289, D-289, C-289, B-290, A-290, G-290, F#-290, E-290, D-290, C-290, B-291, A-291, G-291, F#-291, E-291, D-291, C-291, B-292, A-292, G-292, F#-292, E-292, D-292, C-292, B-293, A-293, G-293, F#-293, E-293, D-293, C-293, B-294, A-294, G-294, F#-294, E-294, D-294, C-294, B-295, A-295, G-295, F#-295, E-295, D-295, C-295, B-296, A-296, G-296, F#-296, E-296, D-296, C-296, B-297, A-297, G-297, F#-297, E-297, D-297, C-297, B-298, A-298, G-298, F#-298, E-298, D-298, C-298, B-299, A-299, G-299, F#-299, E-299, D-299, C-299, B-300, A-300, G-300, F#-300, E-300, D-300, C-300, B-301, A-301, G-301, F#-301, E-3

Handwritten musical notation for the first system. The treble clef staff contains a melodic line with notes G4, A4, B4, C5, B4, A4, G4, F4, E4, D4, C4. The bass clef staff contains a bass line with notes G2, A2, B2, C3, B2, A2, G2, F2, E2, D2, C2. The system is marked with a large slur above the treble staff and a fermata-like symbol below the bass staff.

Handwritten musical notation for the second system. The treble clef staff continues the melodic line with notes D4, E4, F4, G4, A4, B4, C5, B4, A4, G4, F4, E4, D4. The bass clef staff continues the bass line with notes G2, A2, B2, C3, B2, A2, G2, F2, E2, D2, C2. The system is marked with a large slur above the treble staff and a fermata-like symbol below the bass staff.

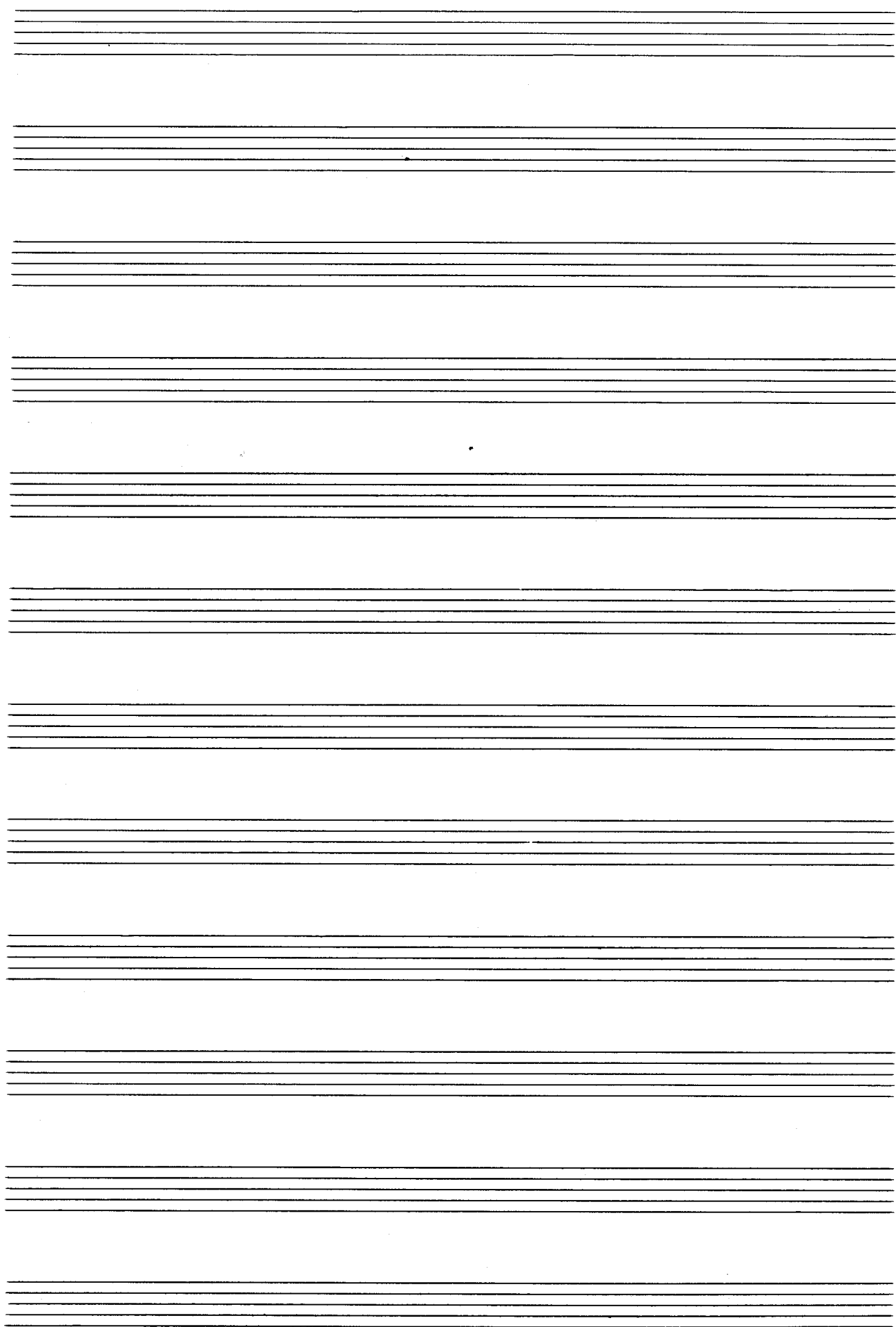
Handwritten musical notation for the third system. The treble clef staff continues the melodic line with notes D4, E4, F4, G4, A4, B4, C5, B4, A4, G4, F4, E4, D4. The bass clef staff contains a series of rests. The system is marked with a large slur above the treble staff and a fermata-like symbol below the bass staff.

Handwritten musical notation for the fourth system. The treble clef staff contains a complex texture with notes G4, A4, B4, C5, B4, A4, G4, F4, E4, D4, C4. The bass clef staff contains a complex texture with notes G2, A2, B2, C3, B2, A2, G2, F2, E2, D2, C2. The system is marked with a large slur above the treble staff and a fermata-like symbol below the bass staff.

größer rit.....

Handwritten musical notation for the first system. The top staff is in treble clef and the bottom staff is in bass clef. The music consists of several measures with notes, accidentals (flats), and slurs. The notation is somewhat sketchy and expressive.

Handwritten musical notation for the second system. It features a double bar line and a box labeled "Fin" at the end. The notation includes various notes, accidentals, and markings such as "rit." and "Lage". The bottom staff has some notes with "3" written below them, possibly indicating triplets or a specific rhythm.

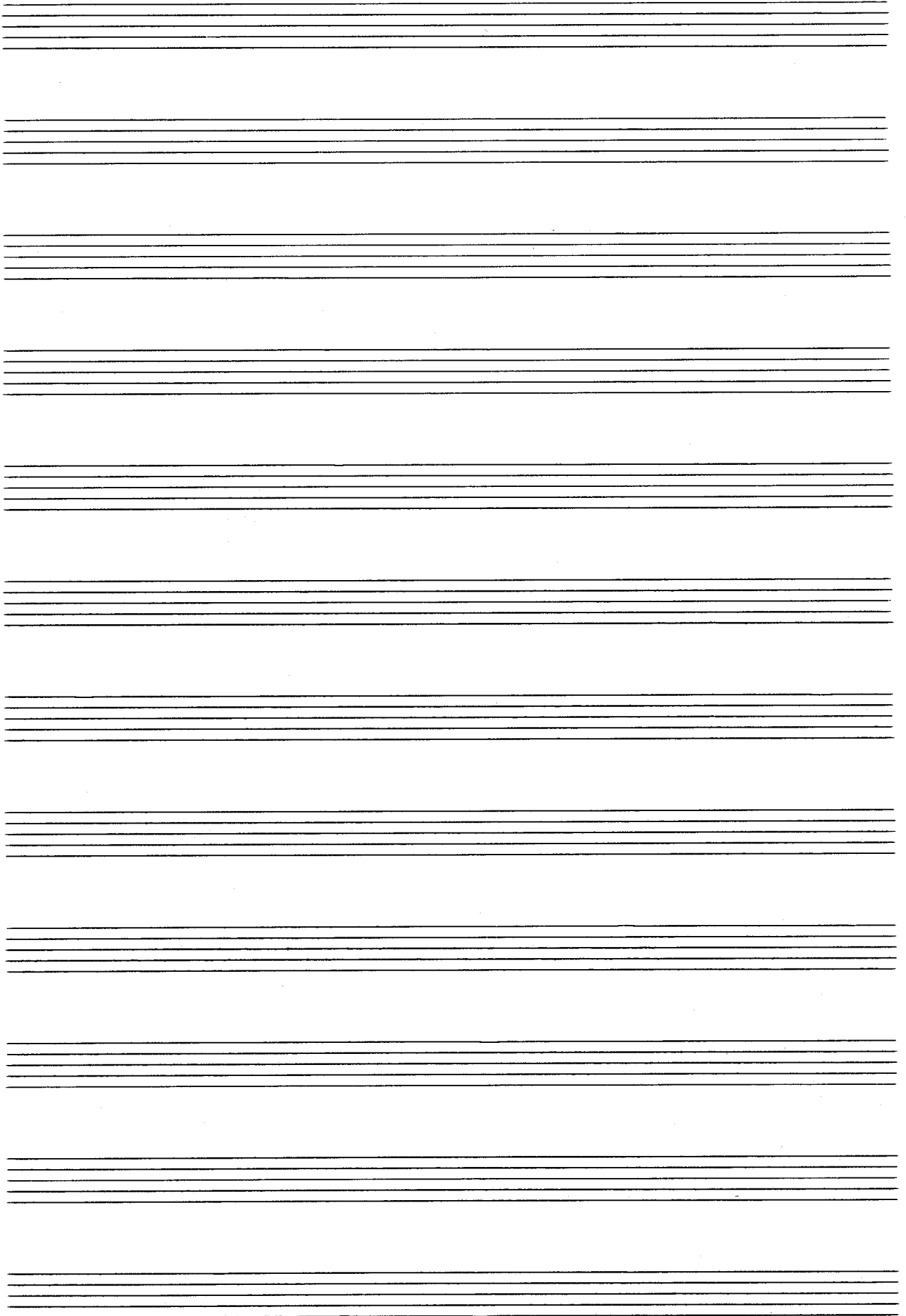


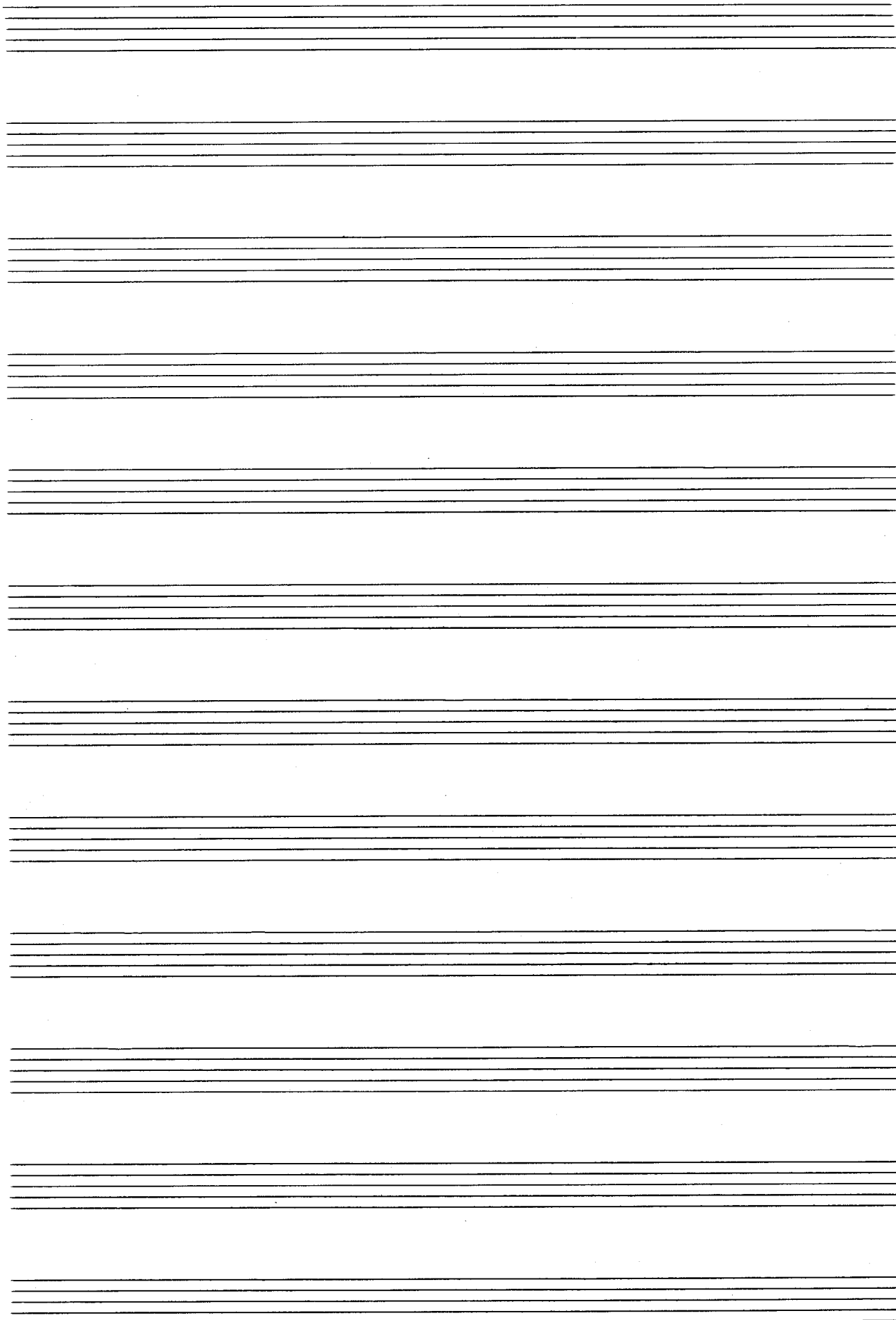
Teil II.

vo2 Werk (Sehr breit)

(26 + rit.)

D.C.
Teil (2)
al Fin.





Allegro spiritoso Teil III.

Handwritten musical notation for the first system. It consists of two staves. The upper staff is in treble clef and the lower staff is in bass clef. The time signature is 4/4. The key signature has one flat (B-flat). The music begins with a forte dynamic marking 'f'. The first measure contains a half note B-flat in the bass and a half note B-flat in the treble. The second measure contains a half note B-flat in the bass and a half note B-flat in the treble. The third measure contains a half note B-flat in the bass and a half note B-flat in the treble. The fourth measure contains a half note B-flat in the bass and a half note B-flat in the treble. The fifth measure contains a half note B-flat in the bass and a half note B-flat in the treble. The sixth measure contains a half note B-flat in the bass and a half note B-flat in the treble. The seventh measure contains a half note B-flat in the bass and a half note B-flat in the treble. The eighth measure contains a half note B-flat in the bass and a half note B-flat in the treble. The system ends with a fermata over the final note.

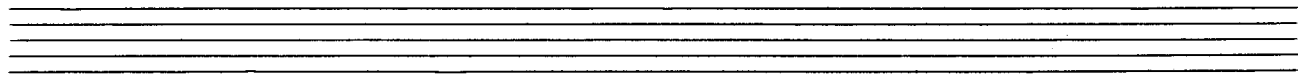
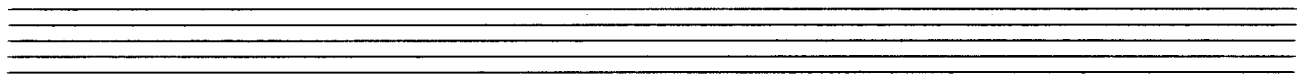
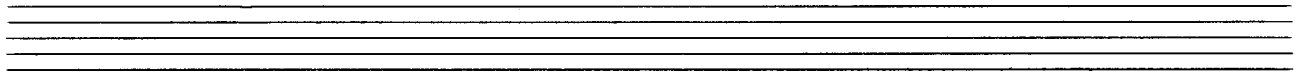
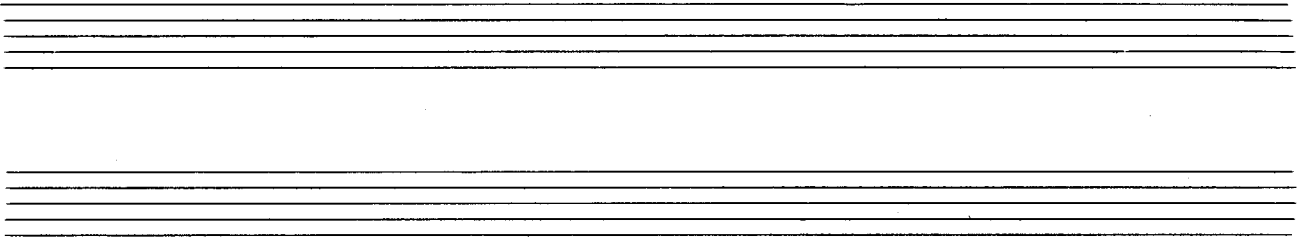
Handwritten musical notation for the second system. It consists of two staves. The upper staff is in treble clef and the lower staff is in bass clef. The time signature is 4/4. The key signature has one flat (B-flat). The music begins with a half note B-flat in the bass and a half note B-flat in the treble. The second measure contains a half note B-flat in the bass and a half note B-flat in the treble. The third measure contains a half note B-flat in the bass and a half note B-flat in the treble. The fourth measure contains a half note B-flat in the bass and a half note B-flat in the treble. The fifth measure contains a half note B-flat in the bass and a half note B-flat in the treble. The sixth measure contains a half note B-flat in the bass and a half note B-flat in the treble. The seventh measure contains a half note B-flat in the bass and a half note B-flat in the treble. The eighth measure contains a half note B-flat in the bass and a half note B-flat in the treble. The system ends with a fermata over the final note.

Handwritten musical notation for the third system. It consists of two staves. The upper staff is in treble clef and the lower staff is in bass clef. The time signature is 4/4. The key signature has one flat (B-flat). The music begins with a half note B-flat in the bass and a half note B-flat in the treble. The second measure contains a half note B-flat in the bass and a half note B-flat in the treble. The third measure contains a half note B-flat in the bass and a half note B-flat in the treble. The fourth measure contains a half note B-flat in the bass and a half note B-flat in the treble. The fifth measure contains a half note B-flat in the bass and a half note B-flat in the treble. The sixth measure contains a half note B-flat in the bass and a half note B-flat in the treble. The seventh measure contains a half note B-flat in the bass and a half note B-flat in the treble. The eighth measure contains a half note B-flat in the bass and a half note B-flat in the treble. The system ends with a fermata over the final note.

Handwritten musical notation for the first system. The system consists of two staves: a treble staff and a bass staff. A large slur is drawn over the treble staff, spanning across two measures. The treble staff contains a melodic line with various notes, including a sharp sign (#) and a flat sign (b). The bass staff contains a bass line with notes and rests, including a double flat sign (bb).

Handwritten musical notation for the second system. The system consists of two staves: a treble staff and a bass staff. A large slur is drawn over the treble staff, spanning across two measures. The treble staff contains a melodic line with various notes and a sharp sign (#). The bass staff contains a bass line with notes and rests, including a flat sign (b).

Handwritten musical notation for the third system. The system consists of two staves: a treble staff and a bass staff. A large slur is drawn over the treble staff, spanning across three measures. The treble staff contains a melodic line with various notes and sharp signs (#). The bass staff contains a bass line with notes and rests, including a flat sign (b) and a double flat sign (bb).



meno

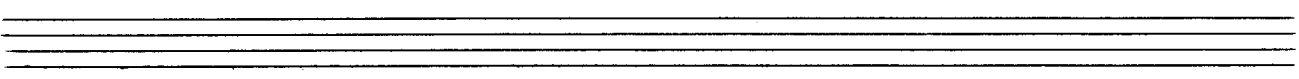
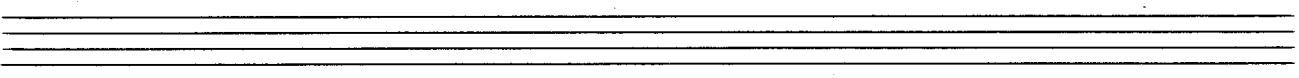
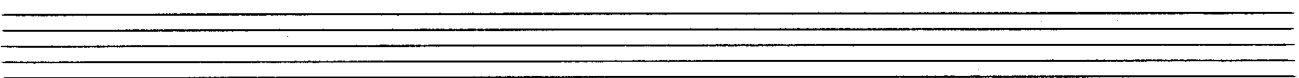
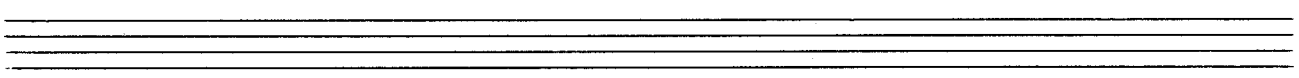
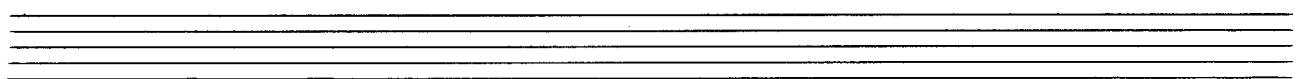
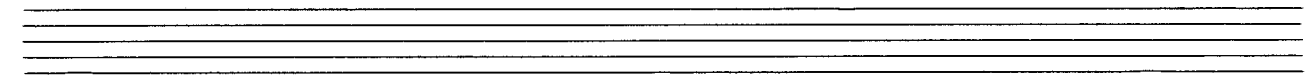
Tempo 1.

Handwritten musical notation for the first system, measures 1-4. The system consists of two staves. The upper staff is in treble clef and contains a melodic line with a circled 'F' in a circle at the beginning. The lower staff is in bass clef and contains a bass line. Both staves have a common time signature 'C'. The music is written in a key with one flat (B-flat). The first measure of the upper staff has a circled 'F' and a flat sign. The first measure of the lower staff has a flat sign. The notation includes various note values, accidentals, and phrasing slurs.

Handwritten musical notation for the second system, measures 5-7. The system consists of two staves. The upper staff is in treble clef and the lower staff is in bass clef. Both staves have a common time signature 'C'. The music is written in a key with one flat (B-flat). The notation includes various note values, accidentals, and phrasing slurs.

Handwritten musical notation for the third system, measures 8-11. The system consists of two staves. The upper staff is in treble clef and the lower staff is in bass clef. Both staves have a common time signature 'C'. The music is written in a key with one flat (B-flat). The notation includes various note values, accidentals, and phrasing slurs.

Handwritten musical notation for the fourth system, measures 12-15. The system consists of two staves. The upper staff is in treble clef and the lower staff is in bass clef. Both staves have a common time signature 'C'. The music is written in a key with one flat (B-flat). The notation includes various note values, accidentals, and phrasing slurs.



Handwritten musical score for the first system. It consists of two staves: a treble clef staff and a bass clef staff. The treble staff begins with a whole rest, followed by a series of notes with accidentals (sharps and naturals) and slurs. The bass staff contains notes with accidentals and slurs. Dynamic markings include 'ppp' in the bass staff. There are also some handwritten annotations like '33' and '777'.

Adagio

Handwritten musical score for the second system, marked 'Adagio'. It features a treble clef staff and a bass clef staff. The treble staff has a 4/8 time signature and a circled 'P'. The music consists of notes with accidentals and slurs across both staves.

Handwritten musical score for the third system, continuing the 'Adagio' section. It features a treble clef staff and a bass clef staff with notes, accidentals, and slurs.

Handwritten musical score for the fourth system. It begins with a treble clef, a circled '8', and a 16-measure rest marked 'ppp'. The rest is represented by a shaded rectangular box. The rest of the system contains notes with accidentals and slurs on both the treble and bass staves.

Handwritten musical notation for the first system. It consists of two staves. The top staff has a treble clef and a circled 'C' above it. A shaded rectangular box is drawn over the first few notes. A long horizontal line spans across the staves, with 'ppp' written below it. To the right, the instruction 'D.C. al φ' is written.

Handwritten musical notation for the second system, marked 'ADAGIO' in the treble clef. It shows a complex melodic line with many accidentals and slurs across two staves.

Handwritten musical notation for the third system, continuing the complex melodic lines with numerous accidentals and slurs across two staves.

Handwritten musical notation for the fourth system, featuring long horizontal lines and the instruction 'lange halten' written above the notes.

1961
A. Scherbaum