

Konzert in 2 Teilen

für

Solistenensemble

1961

Adolf Scherbaum

Notenheft

Konzert in 2 Teilen

für Flöte

3 Trompeten (Jazz) } ad. lib.

3 Posaunen (Jazz) }

Tuba

Horn in F

in Partitur
Teilweise in (hoch)
notiert
teilweise in F
in Stimme alles
in F

Vibraphon

Bass

Schlagzeug (Jazz)
ad. lib.

Op. 61 Adolf Scherbaum

Bei öffentlichen Aufführungen

Flöte -
Vibraphon - } eigene Mikrophone
Bass - } mit Verstärkeranlagen.

Teil I.

Lento

ruhig schreiben! (4/4 denken!!)

1

Flöte

3 Tromp. in C

3 Pos. tuba

1 Horn in C
mit F#

Vibraph.

Celli

Bass

Con sord. ppp

Con sord. ppp

ppp

Solo

pp pizz.

(2)

Handwritten musical score for a string ensemble, measures 1-6. The score is written on six staves. The first two staves are in treble clef, and the last two are in bass clef. The middle two staves are in treble clef. The music is in 2/4 time. The first measure contains notes with 'x' above them, indicating natural harmonics. The second measure has a slur over the first two staves with 'inc hoch.' written above it. The third measure has a slur over the first two staves with 'con sord.' written below it. The fourth measure has a slur over the first two staves with 'ppp' written below it. The fifth and sixth measures have notes with 'x' above them. The bottom staff has notes with 'pp' written below it.

Handwritten musical score for a concert in two parts for a soloist ensemble, SWV 70 (1961) by Adolf Scherbaum. The score is written on multiple staves with various musical notations including notes, rests, dynamics (pp, p), and accidentals. The notation is dense and includes many handwritten annotations and symbols.

Handwritten musical score for a string ensemble, consisting of four measures. The score includes a piano introduction (p) and a complex rhythmic section with various chords and dynamics.

Measure 1: Treble clef, key signature of one sharp (F#). Chords: F# major (x x), F# major (x x), F# major (x x). Bass clef, key signature of one sharp (F#). Chords: F# major (x x), F# major (x x). Dynamics: *p*.

Measure 2: Treble clef, key signature of two flats (Bb). Chords: Bb major (x x), Bb major (x x). Bass clef, key signature of two flats (Bb). Chords: Bb major (x x), Bb major (x x). Dynamics: *p*.

Measure 3: Treble clef, key signature of two sharps (D#). Chords: D# major (x x), D# major (x x). Bass clef, key signature of two sharps (D#). Chords: D# major (x x), D# major (x x). Dynamics: *p*.

Measure 4: Treble clef, key signature of one flat (Bb). Chords: Bb major (x x), Bb major (x x). Bass clef, key signature of one flat (Bb). Chords: Bb major (x x), Bb major (x x). Dynamics: *p*.

Handwritten musical score for Flöte, Bass, and Schlagzeug. The Flöte part is in treble clef with a key signature of two flats and a circled 'p' dynamic marking. The Bass part is in bass clef with a circled 'p' dynamic marking. The Schlagzeug part is indicated by a double bar line. The music consists of two measures with various notes, rests, and slurs.

Handwritten musical score for Flöte, Bass, and Schlagzeug. The Flöte part is in treble clef with a key signature of two flats and a circled 'f' dynamic marking. The Bass part is in bass clef with a circled 'f' dynamic marking. The Schlagzeug part is indicated by a double bar line. The music consists of two measures with various notes, rests, and slurs.

Four sets of empty musical staves for Flöte, Bass, and Schlagzeug.

Handwritten musical score for the first system. The system consists of three staves: a treble clef staff at the top, a grand staff (treble and bass clefs) in the middle, and a bass clef staff at the bottom. The music is written in a complex, chromatic style with many accidentals (sharps and flats) and slurs. The first measure has a treble clef note with a sharp and a flat, and a bass clef note with a sharp. The second measure has a treble clef note with a sharp and a flat, and a bass clef note with a sharp and a flat. The third measure has a treble clef note with a sharp and a flat, and a bass clef note with a sharp and a flat. The fourth measure has a treble clef note with a sharp and a flat, and a bass clef note with a sharp and a flat. The fifth measure has a treble clef note with a sharp and a flat, and a bass clef note with a sharp and a flat. The sixth measure has a treble clef note with a sharp and a flat, and a bass clef note with a sharp and a flat. The seventh measure has a treble clef note with a sharp and a flat, and a bass clef note with a sharp and a flat. The eighth measure has a treble clef note with a sharp and a flat, and a bass clef note with a sharp and a flat. The ninth measure has a treble clef note with a sharp and a flat, and a bass clef note with a sharp and a flat. The tenth measure has a treble clef note with a sharp and a flat, and a bass clef note with a sharp and a flat.

Handwritten musical score for the second system. The system consists of three staves: a treble clef staff at the top, a grand staff (treble and bass clefs) in the middle, and a bass clef staff at the bottom. The music is written in a complex, chromatic style with many accidentals (sharps and flats) and slurs. The first measure has a treble clef note with a sharp and a flat, and a bass clef note with a sharp and a flat. The second measure has a treble clef note with a sharp and a flat, and a bass clef note with a sharp and a flat. The third measure has a treble clef note with a sharp and a flat, and a bass clef note with a sharp and a flat. The fourth measure has a treble clef note with a sharp and a flat, and a bass clef note with a sharp and a flat. The fifth measure has a treble clef note with a sharp and a flat, and a bass clef note with a sharp and a flat. The sixth measure has a treble clef note with a sharp and a flat, and a bass clef note with a sharp and a flat. The seventh measure has a treble clef note with a sharp and a flat, and a bass clef note with a sharp and a flat. The eighth measure has a treble clef note with a sharp and a flat, and a bass clef note with a sharp and a flat. The ninth measure has a treble clef note with a sharp and a flat, and a bass clef note with a sharp and a flat. The tenth measure has a treble clef note with a sharp and a flat, and a bass clef note with a sharp and a flat.

Handwritten musical score for the third system. The system consists of three staves: a treble clef staff at the top, a grand staff (treble and bass clefs) in the middle, and a bass clef staff at the bottom. The music is written in a complex, chromatic style with many accidentals (sharps and flats) and slurs. The first measure has a treble clef note with a sharp and a flat, and a bass clef note with a sharp and a flat. The second measure has a treble clef note with a sharp and a flat, and a bass clef note with a sharp and a flat. The third measure has a treble clef note with a sharp and a flat, and a bass clef note with a sharp and a flat. The fourth measure has a treble clef note with a sharp and a flat, and a bass clef note with a sharp and a flat. The fifth measure has a treble clef note with a sharp and a flat, and a bass clef note with a sharp and a flat. The sixth measure has a treble clef note with a sharp and a flat, and a bass clef note with a sharp and a flat. The seventh measure has a treble clef note with a sharp and a flat, and a bass clef note with a sharp and a flat. The eighth measure has a treble clef note with a sharp and a flat, and a bass clef note with a sharp and a flat. The ninth measure has a treble clef note with a sharp and a flat, and a bass clef note with a sharp and a flat. The tenth measure has a treble clef note with a sharp and a flat, and a bass clef note with a sharp and a flat.

frei rubato

Handwritten musical notation for the first system, featuring a treble clef and a grand staff. The notation includes various notes, accidentals, and slurs, with the instruction "frei rubato" written above the staff.

Handwritten musical notation for the second system, featuring a treble clef and a grand staff. The notation includes various notes, accidentals, and slurs, with a large bracket spanning across the system.

Handwritten musical notation for the third system, featuring a treble clef and a grand staff. The notation includes various notes, accidentals, and slurs, with a large bracket spanning across the system.

Handwritten musical score for a string ensemble. The score is written on multiple staves. The top staff shows a treble clef with a key signature of one flat (B-flat) and a common time signature. Below it, there are several staves for different instruments, likely violins, violas, and cellos/contrabasses. The notation includes notes, rests, and various performance markings such as "offen", "nachh.", "hart", and "pizz". There are also some handwritten annotations like "3" and "5". The score is divided into two measures by a vertical bar line. The bottom of the page shows several empty staves.

Handwritten musical score for a concert in two parts for a soloist ensemble, SWV 70 (1961) by Adolf Scherbaum. The score is written on six staves. The top two staves are for a piano, the middle two for a violin and viola, and the bottom two for a cello and double bass. The music is in 3/4 time and features complex harmonic structures with many accidentals and dynamic markings. The score is divided into three measures by vertical bar lines. The first measure contains a piano introduction with a key signature of one sharp (F#) and a 3/4 time signature. The second measure continues the piano part with a key signature change to one flat (Bb) and a 3/4 time signature. The third measure concludes the piano part with a key signature of one sharp (F#) and a 3/4 time signature. The violin and viola parts feature melodic lines with accents and slurs. The cello and double bass parts feature a rhythmic pattern of eighth notes with accents and slurs. The score is written in a clear, legible hand.

Handwritten musical score for a concert in 2 parts for a soloist ensemble. The score is written on a system of staves. The top staff is a vocal line with lyrics "dir" and "p". The middle staves are for other instruments, with some notes and dynamics like "p" and "pp". The bottom staff has a bass line with a triplet and dynamics "p" and "pp". There are various musical notations including accidentals, slurs, and dynamic markings.

VIBR

pp

BoB

pp

Schlagzeug

mf

mf

f

f

Handwritten musical score for the first system. The top staff is in treble clef and contains complex chords with various accidentals (sharps, flats, naturals) and some wavy lines above the notes. The bottom staff is in bass clef and contains a melodic line with notes and accidentals. The system is divided into three measures by vertical bar lines.

Handwritten musical score for the second system. The top staff is in treble clef and contains a melodic line with notes and accidentals, some of which are grouped under a large bracket. The bottom staff is in bass clef and contains a melodic line with notes and accidentals. The system is divided into three measures by vertical bar lines.

Handwritten musical score for the third system. The top staff is in treble clef and contains a melodic line with notes and accidentals, some of which are grouped under a large bracket. The bottom staff is in bass clef and contains a melodic line with notes and accidentals. The system is divided into three measures by vertical bar lines. A circled 'D' is written to the right of the system.

Handwritten musical score for a concert in two parts for a soloist ensemble, SWV 70 (1961) by Adolf Scherbaum. The score is written on multiple staves. The top section includes a treble clef staff with a key signature of one sharp (F#) and a common time signature (C). Below it are two staves for a grand piano (HP), with notes and dynamics like 'ff' and 'p'. The middle section features a treble clef staff with a key signature of one sharp and a common time signature, containing a melodic line with notes and rests. Below this is a bass clef staff with a key signature of one sharp, containing a few notes and rests. The bottom section consists of several empty staves.

The image shows a handwritten musical score on ten staves. The notation is primarily in black ink on white paper. The top four staves contain long, sweeping lines, likely representing sustained notes or glissandi, with some handwritten markings like 'f' and 'p' indicating dynamics. The fifth staff features a sequence of notes with stems, followed by a large, curved line. The bottom six staves are mostly empty, with some faint lines and markings. The right side of the page is marked with a vertical line and some handwritten symbols, possibly indicating the end of a section or a specific performance instruction.

Schöne Pulzige $\frac{6}{8}$

VIBRATO

A handwritten musical score for a solo ensemble, consisting of six staves. The top staff is a treble clef with a wavy line indicating vibrato. The second and third staves are grouped by a brace on the left and contain piano accompaniment. The fourth staff is a treble clef. The fifth and sixth staves are bass clefs. The score is divided into three measures by vertical bar lines. The first measure starts with a piano (*pp*) dynamic and a *b d.* marking. The second measure has a *pp* dynamic and includes various accidentals and notes. The third measure also has a *pp* dynamic. The bottom-most staff has a *pp* dynamic and contains rhythmic markings like *29 39* and *49 59*.

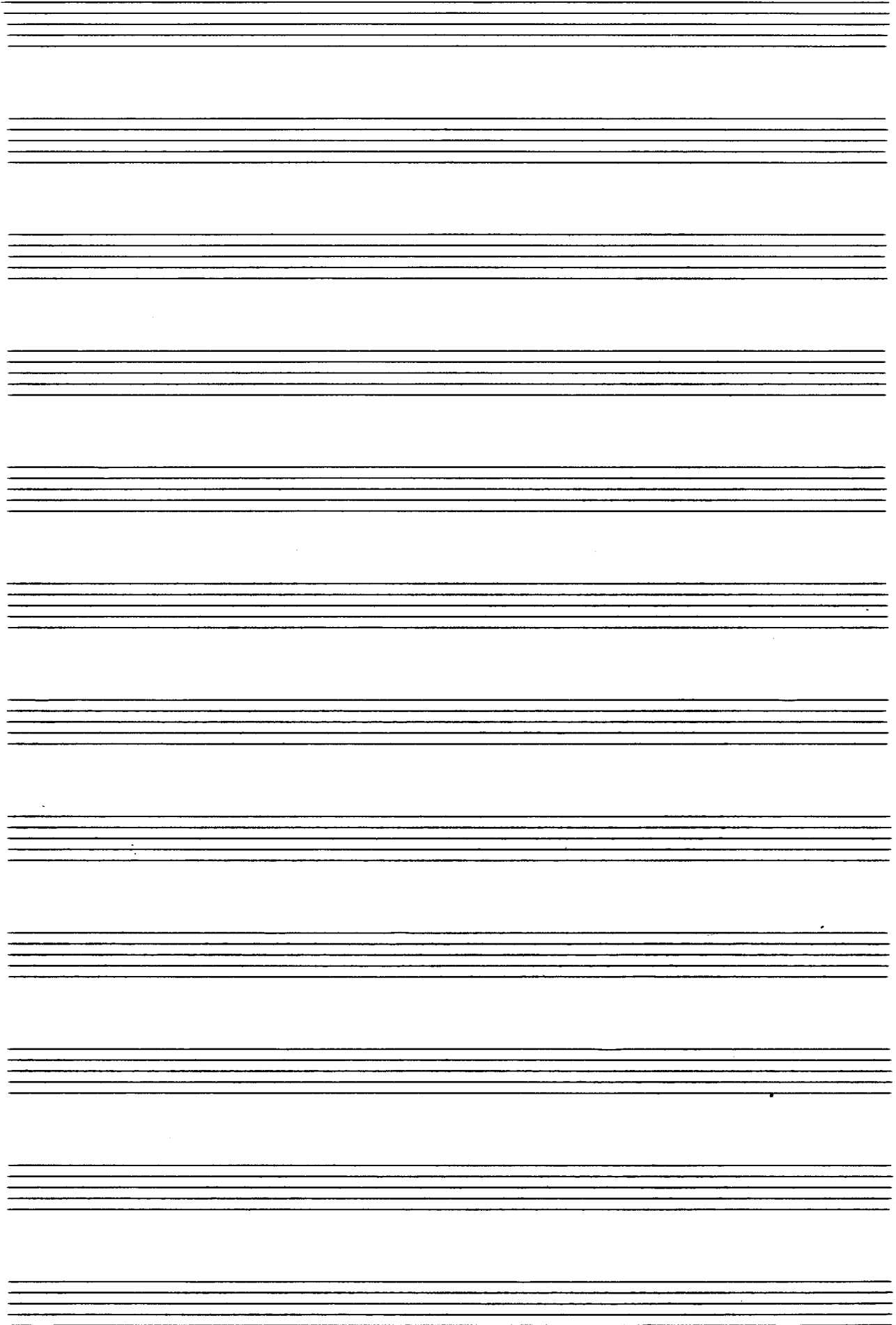
Großes pit. - drei

Flöte (Solo) frei

Größtes mit + dünn.....

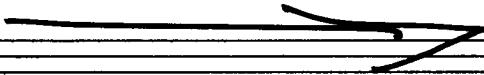
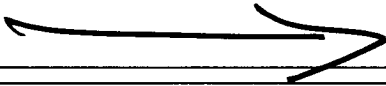
Für Teil 1

Handwritten musical score for a string ensemble. The score is written on five staves: Violin I, Violin II, Viola, Violoncello, and Kontrabaß. The music is in 3/4 time and features various dynamic markings such as *pp* and *ppp*. The phrase "Größtes mit + dünn....." is written across the staves. The score includes notes, rests, and some performance instructions like "Für Teil 1" in the top right corner. The bottom of the page shows several empty staves.



Teil 2

Presto
Bass Solo *sempre cresc...*
Sollage $\frac{4}{4}$ *pp*



Flöte
 3 Klar.
 3 Pos.
 Horn
 VIBR.
 Schlagg.
 Bass

93
 Pos.

77

Handwritten musical score for a solo ensemble concert. The score is written on a grand staff with five systems of staves. The first system contains the main melodic and harmonic material. The second system contains a bass line. The third, fourth, and fifth systems are empty. The notation includes various notes, rests, accidentals, and performance markings such as slurs, accents, and a triplet.

Handwritten musical score for the first system. The top two staves contain complex melodic lines with various accidentals (sharps, flats, naturals) and articulation marks. The first staff has a circled '33' at the beginning. The second staff has a circled '23' and a circled '3' later in the piece. The bottom staff shows a bass line with chords and stems, indicating a harmonic accompaniment.

Handwritten musical score for the second system. It consists of four staves. The top two staves (labeled '3TR' and '3P5') contain melodic lines with notes and accidentals. The third staff (labeled 'Bass') contains a bass line with chords and stems. The bottom staff (labeled 'Solo') is mostly empty, suggesting a solo part that is not fully written out or is to be improvised.

duin

STR

3 POS

Bsns

Bassoon

Block (A)

Flute Solo

Block (A)

Block (A)

Block (A)

Block (A)

Block (A)

Block (A)

Handwritten musical notation for Block (A) on a grand staff. The treble clef staff contains a melodic line with various accidentals (sharps, flats, naturals) and a fermata over the final measure. The bass clef staff contains a simple accompaniment line. The text "BLOCK (A)" is written in the center of the staff.

Handwritten musical notation for Block (A) on a grand staff. The treble clef staff contains a melodic line with various accidentals and a fermata over the final measure. The bass clef staff contains a simple accompaniment line. The text "BLOCK (A)" is written in the center of the staff.

Handwritten musical notation for Block (A) on a grand staff. The treble clef staff contains a melodic line with various accidentals and a fermata over the final measure. The bass clef staff contains a simple accompaniment line. The text "BLOCK (A)" is written in the center of the staff.

Handwritten musical notation for Block (A) on a grand staff. The treble clef staff contains a melodic line with various accidentals and a fermata over the final measure. The bass clef staff contains a simple accompaniment line. The text "BLOCK (A)" is written in the center of the staff.

Handwritten musical notation for Block (A) on a grand staff. The notation is dense with many notes and accidentals, including flats and sharps. A large slur covers the entire block. The label "BLOCK (A)" is written in the center of the block.

Handwritten musical notation for Block (A) on a grand staff. The notation is less dense than the first block, with fewer notes and accidentals. A large slur covers the entire block. The label "BLOCK (A)" is written in the center of the block.

Handwritten musical notation for Block (A) on a grand staff. The notation is similar in density to the first block, with many notes and accidentals. A large slur covers the entire block. The label "BLOCK (A)" is written in the center of the block.

Handwritten musical notation for Block (A) on a grand staff. The notation is similar in density to the first block, with many notes and accidentals. A large slur covers the entire block. The label "BLOCK (A)" is written in the center of the block.

VBR *f*
 Bass *f*
 Pedals

This system contains three staves. The top staff is for Violin (VBR) in G major, starting with a forte (f) dynamic. The middle staff is for Bass, also in G major, with a forte (f) dynamic. The bottom staff is for Pedals. The music consists of four measures with various notes and accidentals.

This system contains two staves. The top staff is for Violin and the bottom staff is for Bass. The music continues with four measures, showing melodic lines and harmonic accompaniment.

This system contains two staves. The top staff is for Violin and the bottom staff is for Bass. The music continues with four measures, featuring some phrasing slurs and dynamic markings.

This system contains two staves. The top staff is for Violin and the bottom staff is for Bass. The music concludes with four measures, including a final cadence.

Handwritten musical score system 1. It consists of two staves (treble and bass clef) with a brace on the left. The music is in 2/4 time. The first measure has a treble clef key signature of two flats (Bb, Eb) and a bass clef key signature of one flat (Bb). The second measure has a treble clef key signature of one flat (Bb) and a bass clef key signature of one flat (Bb). The third measure has a treble clef key signature of one flat (Bb) and a bass clef key signature of one flat (Bb). The fourth measure has a treble clef key signature of one flat (Bb) and a bass clef key signature of one flat (Bb). The fifth measure has a treble clef key signature of one flat (Bb) and a bass clef key signature of one flat (Bb). There are various accidentals and phrasing slurs throughout.

Handwritten musical score system 2. It consists of two staves (treble and bass clef) with a brace on the left. The first measure has a treble clef key signature of one flat (Bb) and a bass clef key signature of one flat (Bb). The second measure has a treble clef key signature of one flat (Bb) and a bass clef key signature of one flat (Bb). The third measure has a treble clef key signature of one flat (Bb) and a bass clef key signature of one flat (Bb). The fourth measure has a treble clef key signature of one flat (Bb) and a bass clef key signature of one flat (Bb). The fifth measure has a treble clef key signature of one flat (Bb) and a bass clef key signature of one flat (Bb). There are various accidentals and phrasing slurs throughout.

Handwritten musical score system 3. It consists of two staves (treble and bass clef) with a brace on the left. The first measure has a treble clef key signature of one flat (Bb) and a bass clef key signature of one flat (Bb). The second measure has a treble clef key signature of one flat (Bb) and a bass clef key signature of one flat (Bb). The third measure has a treble clef key signature of one flat (Bb) and a bass clef key signature of one flat (Bb). The fourth measure has a treble clef key signature of one flat (Bb) and a bass clef key signature of one flat (Bb). The fifth measure has a treble clef key signature of one flat (Bb) and a bass clef key signature of one flat (Bb). There are various accidentals and phrasing slurs throughout.

Handwritten musical score system 4. It consists of two staves (treble and bass clef) with a brace on the left. The first measure has a treble clef key signature of one flat (Bb) and a bass clef key signature of one flat (Bb). The second measure has a treble clef key signature of one flat (Bb) and a bass clef key signature of one flat (Bb). The third measure has a treble clef key signature of one flat (Bb) and a bass clef key signature of one flat (Bb). The fourth measure has a treble clef key signature of one flat (Bb) and a bass clef key signature of one flat (Bb). The fifth measure has a treble clef key signature of one flat (Bb) and a bass clef key signature of one flat (Bb). There are various accidentals and phrasing slurs throughout.

Handwritten musical score for the first system. The treble clef staff has a key signature of one sharp (F#). The bass clef staff has a key signature of one flat (Bb). The system consists of four measures. The treble staff contains eighth and sixteenth notes. The bass staff contains chords and single notes, some with accents and slurs.

Handwritten musical score for the second system. The treble clef staff has a key signature of one sharp (F#). The bass clef staff has a key signature of one flat (Bb). The system consists of four measures. The treble staff contains eighth and sixteenth notes. The bass staff contains chords and single notes, some with accents and slurs.

Handwritten musical score for the third system. The treble clef staff has a key signature of one sharp (F#). The bass clef staff has a key signature of one flat (Bb). The system consists of four measures. The treble staff contains eighth and sixteenth notes. The bass staff contains chords and single notes, some with accents and slurs.

Handwritten musical score for the fourth system. The treble clef staff has a key signature of one sharp (F#). The bass clef staff has a key signature of one flat (Bb). The system consists of four measures. The treble staff contains eighth and sixteenth notes. The bass staff contains chords and single notes, some with accents and slurs.

Handwritten musical notation for the first system. The treble clef staff contains notes with accidentals: \flat , \flat , \sharp , \flat , \sharp , \flat , \sharp , \flat . The bass clef staff contains notes with accidentals: \flat , \sharp , \flat , \sharp , \flat , \sharp , \flat , \sharp . A sharp sign is present in the key signature of both staves.

Handwritten musical notation for the second system. The treble clef staff has notes with accidentals: \flat , \flat , \flat , \flat , \flat , \flat , \flat , \flat . The bass clef staff has notes with accidentals: \sharp , \sharp , \sharp , \sharp , \flat , \flat , \flat , \flat . Slurs and ties are used to connect notes across measures.

Handwritten musical notation for the third system. The treble clef staff has notes with accidentals: \sharp , \sharp , \flat , \flat , \sharp , \sharp , \sharp , \flat . The bass clef staff has notes with accidentals: \flat , \flat , \flat , \flat , \flat , \flat , \sharp , \sharp , \sharp , \flat , \sharp , \sharp , \flat , \flat . Slurs and ties are used to connect notes across measures.

Handwritten musical notation for the fourth system. The treble clef staff has notes with accidentals: \flat , \flat , \flat , \flat , \flat , \flat , \flat , \flat . The bass clef staff has notes with accidentals: \flat , \sharp , \flat , \flat , \flat , \flat , \flat , \flat . A flourish is written above the final notes, with the word "Guss" written above it.

Horn Solo
in F

Flute

Bob

Schlagzeug

Handwritten musical score for the first system. It consists of four staves. The top staff is for Horn Solo in F, with notes and accidentals. The second staff is for Flute, also with notes and accidentals. The third staff is for Bob, with notes and accidentals. The fourth staff is for Schlagzeug, with rhythmic notation. The system is divided into four measures.

Handwritten musical score for the second system. It consists of four staves. The top staff has notes with accidentals and a slur. The second staff has notes with accidentals. The third and fourth staves are empty. The system is divided into four measures.

Handwritten musical score for the third system. It consists of four staves. The top staff has notes with accidentals and a slur. The second staff has notes with accidentals. The third and fourth staves are empty. The system is divided into four measures.

Handwritten musical score for the fourth system. It consists of four staves. The top staff has notes with accidentals and a slur. The second staff has notes with accidentals. The third and fourth staves are empty. The system is divided into four measures.

Handwritten musical score system 1. The system consists of two staves. The upper staff is in treble clef and contains a melodic line with a slur over the first two measures and a fermata over the last two measures. The lower staff is in bass clef and contains a chordal accompaniment with four measures of chords.

Handwritten musical score system 2. The system consists of two staves. The upper staff is in treble clef and contains a melodic line with a slur over the first two measures and a fermata over the last two measures. The lower staff is in bass clef and contains a chordal accompaniment with four measures of chords.

Handwritten musical score system 3. The system consists of two staves. The upper staff is in treble clef and contains a melodic line with a slur over the first two measures and a fermata over the last two measures. The lower staff is in bass clef and contains a chordal accompaniment with five measures of chords.

Handwritten musical score system 4. The system consists of two staves. The upper staff is in treble clef and contains a melodic line with a slur over the first two measures and a fermata over the last two measures. The lower staff is in bass clef and contains a chordal accompaniment with five measures of chords.

Handwritten musical score for the first system. The top staff is in treble clef and contains a melodic line with various ornaments and slurs. The bottom two staves are a grand staff for piano accompaniment. The piano part includes a section marked "Solo" with a sharp sign below it. The system concludes with a double bar line and a square box at the end of the staff.

Handwritten musical score for the second system. It continues the melodic line from the first system. The piano accompaniment features complex chordal textures and rhythmic patterns. The system ends with a double bar line and a square box.

Handwritten musical score for the third system. The melodic line continues with more intricate phrasing. The piano accompaniment provides a rich harmonic support. The system concludes with a double bar line and a square box.

Handwritten musical score for the fourth system. This system concludes the piece with a final melodic phrase and piano accompaniment. The system ends with a double bar line and a square box.

Handwritten musical score for the first system. The treble clef staff contains a melodic line with slurs and accents. The bass clef staff contains a chordal accompaniment with various chord symbols and accidentals.

Handwritten musical score for the second system. The treble clef staff continues the melodic line with slurs and accents. The bass clef staff continues the chordal accompaniment with various chord symbols and accidentals.

Handwritten musical score for the third system. The treble clef staff features a more complex melodic line with many notes and slurs. The bass clef staff continues the chordal accompaniment with various chord symbols and accidentals.

Handwritten musical score for the fourth system. The treble clef staff concludes the melodic line with a final cadence. The bass clef staff concludes the chordal accompaniment with various chord symbols and accidentals. The system ends with a double bar line and a repeat sign.

Handwritten musical score for a string ensemble. The score is written on five staves. The top two staves are for the first and second violins, the middle two for the first and second violas, and the bottom for the double bass. The key signature is one sharp (F#) and the time signature is 3/4. The double bass part is marked 'Solo' and 'pp'. The first and second violins have a 'p' dynamic marking. The score includes various musical notations such as notes, rests, dynamics, and articulation marks.

Bass Solo

Handwritten musical score for a double bass solo. The score is written on a single staff. The key signature is one sharp (F#) and the time signature is 3/4. The score includes various musical notations such as notes, rests, dynamics, and articulation marks. The dynamic markings are 'ff' and 'pp'.

Handwritten musical score for a string ensemble, consisting of six staves. The notation is dense and includes various musical symbols such as notes, rests, and dynamic markings. The score is organized into measures, with some measures containing multiple notes and rests. The notation is written in black ink on a white background.

Schlagzeug Solo | ganz frei
dem Solisten überlassen!

Handwritten musical score for a drum solo, consisting of a single staff. The notation is simple, featuring a large bracket and a horizontal line, indicating the solo section. The score is written in black ink on a white background.

Handwritten musical score for the first system, featuring four staves: 3TR (Trumpet 3), 3RS (Trumpet 3), Baro (Baritone), and Schlegel (Saxophone).

The 3TR and 3RS staves are in G major and contain melodic lines with slurs and accents. The Baro staff is in G major and contains a bass line with slurs. The Schlegel staff is empty.

Handwritten musical score for the second system, featuring four staves: 3TR (Trumpet 3), 3RS (Trumpet 3), Baro (Baritone), and Schlegel (Saxophone).

The 3TR and 3RS staves are in G major and contain melodic lines with slurs and accents. The Baro staff is in G major and contains a bass line with slurs. The Schlegel staff is empty.

Handwritten musical score for the third system, featuring four staves: 3TR (Trumpet 3), 3RS (Trumpet 3), Baro (Baritone), and Schlegel (Saxophone).

The 3TR and 3RS staves are in G major and contain melodic lines with slurs and accents. The Baro staff is in G major and contains a bass line with slurs. The Schlegel staff is empty.

The image shows a handwritten musical score for a solo ensemble concert. The score is written on a system of five staves. The top staff is a treble clef with a key signature of one sharp (F#). The second and third staves are grouped by a brace on the left, indicating a piano part. The second staff contains a melodic line with various notes, including a half note with a flat and an accent, and a quarter note with a sharp. The third staff contains a complex piano accompaniment with many notes, some with accidentals and dynamics like *mf*. The fourth staff is a treble clef with a key signature of one sharp, containing a few notes and a sharp sign. The fifth staff is a bass clef with a key signature of one sharp, containing a series of rhythmic patterns represented by vertical lines and stems, with some accidentals like flats and sharps. There are also some handwritten annotations like '3' and '3' above the first two staves, and some brackets and arrows indicating phrasing or dynamics.

Handwritten musical score for a Solistenensemble, featuring the following parts:

- Fl.** (Flute): Rests in all measures.
- TRP.** (Trumpet):
 - 1: Melodic line with notes $\flat, \sharp, \flat, \sharp, \flat, \sharp, \flat, \sharp, \flat, \sharp$ and a whole note \sharp in the second measure.
 - 2: Rests in all measures.
 - 3: Rests in all measures.
- Pos.** (Posaune):
 - 1: Rests in all measures.
 - 2: Rests in all measures.
 - 3/4: Rests in all measures.
- Hörn.** (Horn): Rests in all measures.
- VIBR.** (Vibraphon): Rests in all measures.
- Bass** (Bass):
 - Measure 1: $\flat, \flat, \flat, \flat$
 - Measure 2: $\flat, \flat, \flat, \flat$
 - Measure 3: $\flat, \flat, \flat, \flat$
 - Measure 4: $\flat, \flat, \flat, \flat$
- Schlag.** (Schlagzeug): Rests in all measures.

Handwritten musical score for a concert in two parts for a soloist ensemble, SWV 70 (1961) by Adolf Scherbaum. The score is written on ten staves. The top four staves are grouped with a brace on the left. The bottom two staves are also grouped with a brace on the left. The score is divided into four measures by vertical bar lines. The notation includes various notes, rests, and accidentals. A small box is present in the top right corner.

Handwritten musical score for a woodwind and brass ensemble. The score is divided into two measures by a vertical bar line. The instruments and their parts are as follows:

- Fl.** (Flute): Two measures of music with various accidentals (sharps, naturals, flats) and a first-measure accent (^).
- 3TR** (3 Trumpets): Two measures of music with complex rhythmic patterns and accidentals.
- 3Bs** (3 Trombones): Two measures of music with complex rhythmic patterns and accidentals.
- Horn** (Horn): Two measures of music, starting with a dynamic marking of *mf* and a first-measure accent (^).
- VIB** (Vibraphone): Two empty staves.
- Pedagog. Bors** (Pedagogical Basses): Two measures of music, with the second measure marked *arco*.

Handwritten musical score for a string ensemble, consisting of six staves. The notation is highly stylized and includes:

- Staff 1: A few notes at the beginning, followed by a long horizontal line.
- Staff 2: A few notes at the beginning, followed by a long horizontal line.
- Staff 3: A few notes at the beginning, followed by a long horizontal line.
- Staff 4: A complex, flowing melodic line with many slurs and ties.
- Staff 5: A few notes at the beginning, followed by a long horizontal line.
- Staff 6: A few notes at the beginning, followed by a long horizontal line.

Handwritten musical score for a solo ensemble. The score includes parts for Flute (Fl.), 3 Trumpets (3T), 3 Positions Trombone (3Pos Tuba), Horn (Horn), Violin (Vln), Bassoon (Bss), and Cello (Cello). The music is written on a system of seven staves. The Flute part has a dynamic marking of *forte* and a performance instruction of *halten*. The Horn part has a marking of *in C hoch*. The Violin part includes a *Ped.* (pedal) marking. The Cello part has a marking of *ad lib. Solo*. The score is written in a key signature of one sharp (F#) and a common time signature (C). The notation includes various rhythmic values, accidentals, and dynamic markings.

Wien 1961
 Adolf Scherbaum