

Notenheft

Kleine Musik in 3 Teilen

für
Oboe, Bratsche und
Cello

1962

Adolf Scherbaum

Aufführung 1989
Radio LINZ

Aufnahmeleitung:
Dr. Leopold
Mayer.

Manfred Völkner (Oboe)
H. Wohl (Bratsche)
Dr. Pichler (Cello)

Allegro (Mod.)

OBOE

BRATSCHKE

Cello

Handwritten musical score for the first system. It consists of three staves: Oboe (treble clef), Violin (bass clef), and Cello (bass clef). The time signature is 2/2. The Oboe part features a melodic line with slurs and accents. The Violin and Cello parts provide harmonic support with chords and some rhythmic patterns. Dynamic markings include 'f' and 'ff'.

Handwritten musical score for the second system. It consists of three staves: Oboe (treble clef), Violin (bass clef), and Cello (bass clef). The Oboe part has a circled '1' above it. The Violin and Cello parts have circled 'f' markings. The music continues with melodic and harmonic development.

Handwritten musical score for the third system. It consists of three staves: Oboe (treble clef), Violin (treble clef), and Cello (bass clef). The Oboe part has a circled '2' above it. The Violin and Cello parts have 'Pizz' markings. The music concludes with various dynamics and articulations.

Handwritten musical score for the first system. It consists of three staves. The top staff has a treble clef and contains a whole rest followed by a half note with a sharp sign. The middle staff has a treble clef and contains a series of eighth notes, some with accents, and a circled sharp sign. The bottom staff has a bass clef and contains a series of eighth notes, some with accents, and a sharp sign. The system is enclosed in a large bracket on the left.

Handwritten musical score for the second system. It consists of three staves. The top staff has a treble clef and contains a series of eighth notes, some with accents, and a circled number 3. The middle staff has a treble clef and contains a series of eighth notes, some with accents, and a sharp sign. The bottom staff has a bass clef and contains a series of eighth notes, some with accents, and a sharp sign. The system is enclosed in a large bracket on the left.

Handwritten musical score for the third system. It consists of three staves. The top staff has a treble clef and contains a series of eighth notes, some with accents, and a sharp sign. The middle staff has a treble clef and contains a series of eighth notes, some with accents, and a sharp sign. The bottom staff has a bass clef and contains a series of eighth notes, some with accents, and a sharp sign. The system is enclosed in a large bracket on the left.

Handwritten musical score for the first system. It consists of three staves. The top staff is a treble clef with a key signature of one sharp (F#) and a dynamic marking of mf . The middle staff is a treble clef with a key signature of one sharp (F#) and a dynamic marking of p . The bottom staff is a bass clef with a key signature of one sharp (F#). The music includes various notes, rests, and articulation marks. A circled number '4' is written above the first measure of the middle staff. A double bar line with repeat dots is present at the end of the first measure in each staff.

Handwritten musical score for the second system. It consists of three staves. The top staff is a treble clef with a key signature of one sharp (F#) and a dynamic marking of p . The middle staff is a treble clef with a key signature of one sharp (F#). The bottom staff is a bass clef with a key signature of one sharp (F#). The music includes various notes, rests, and articulation marks. A circled number '5' is written above the first measure of the middle staff. The instruction "sempre cresc..." is written above the top staff with an arrow pointing to the right. A double bar line with repeat dots is present at the end of the first measure in each staff.

Handwritten musical score for the third system. It consists of three staves. The top staff is a treble clef with a key signature of one sharp (F#) and a dynamic marking of mf . The middle staff is a treble clef with a key signature of one sharp (F#) and a dynamic marking of f . The bottom staff is a bass clef with a key signature of one sharp (F#) and a dynamic marking of f . The music includes various notes, rests, and articulation marks. A circled number '5' is written above the first measure of the middle staff. A double bar line with repeat dots is present at the end of the first measure in each staff.

4

OSSIA (OBOE)

Adagio II.
(sehr ruhig)

Handwritten musical score for the first system of 'Adagio II. (sehr ruhig)'. It features three staves: Treble, Bass, and Cello/Double Bass. The music includes triplets, slurs, and dynamic markings like 'p' and 'f'.

Handwritten musical score for the second system of 'Adagio II. (sehr ruhig)'. It features three staves: Treble, Bass, and Cello/Double Bass. The music includes triplets, slurs, and dynamic markings like 'mf' and 'f'.

12

III.

Presto (So rasch als möglich)

Handwritten musical score for the first system. It consists of a grand staff with three staves: treble, alto, and bass clefs. The tempo is marked 'Presto' with the instruction '(So rasch als möglich)'. The first measure has a 2-measure rest in the treble and a 4-measure rest in the bass, both circled. The second measure has a circled 'f' dynamic marking. The music includes various notes with accents and slurs. A circled '1' is at the end of the system.

Handwritten musical score for the second system. It consists of a grand staff with three staves: treble, alto, and bass clefs. The music continues from the first system. There is a 4-measure rest in the bass. The music includes various notes with accents and slurs. A circled '2' is at the end of the system.

3

Handwritten musical score for the first system, measures 1-4. It features three staves: Treble, Bass, and Cello/Double Bass. The music includes various notes, rests, and dynamic markings like accents (^) and slurs. A circled '3' is at the end of the system.

Handwritten musical score for the second system, measures 5-8. It features three staves: Treble, Bass, and Cello/Double Bass. The music continues with similar notation and includes a circled '4' at the end of the system.

Handwritten musical score for the third system, measures 9-12. It features three staves: Treble, Bass, and Cello/Double Bass. The music concludes with a circled '4' and the word 'FINE' written vertically on the right side.

5

6

7

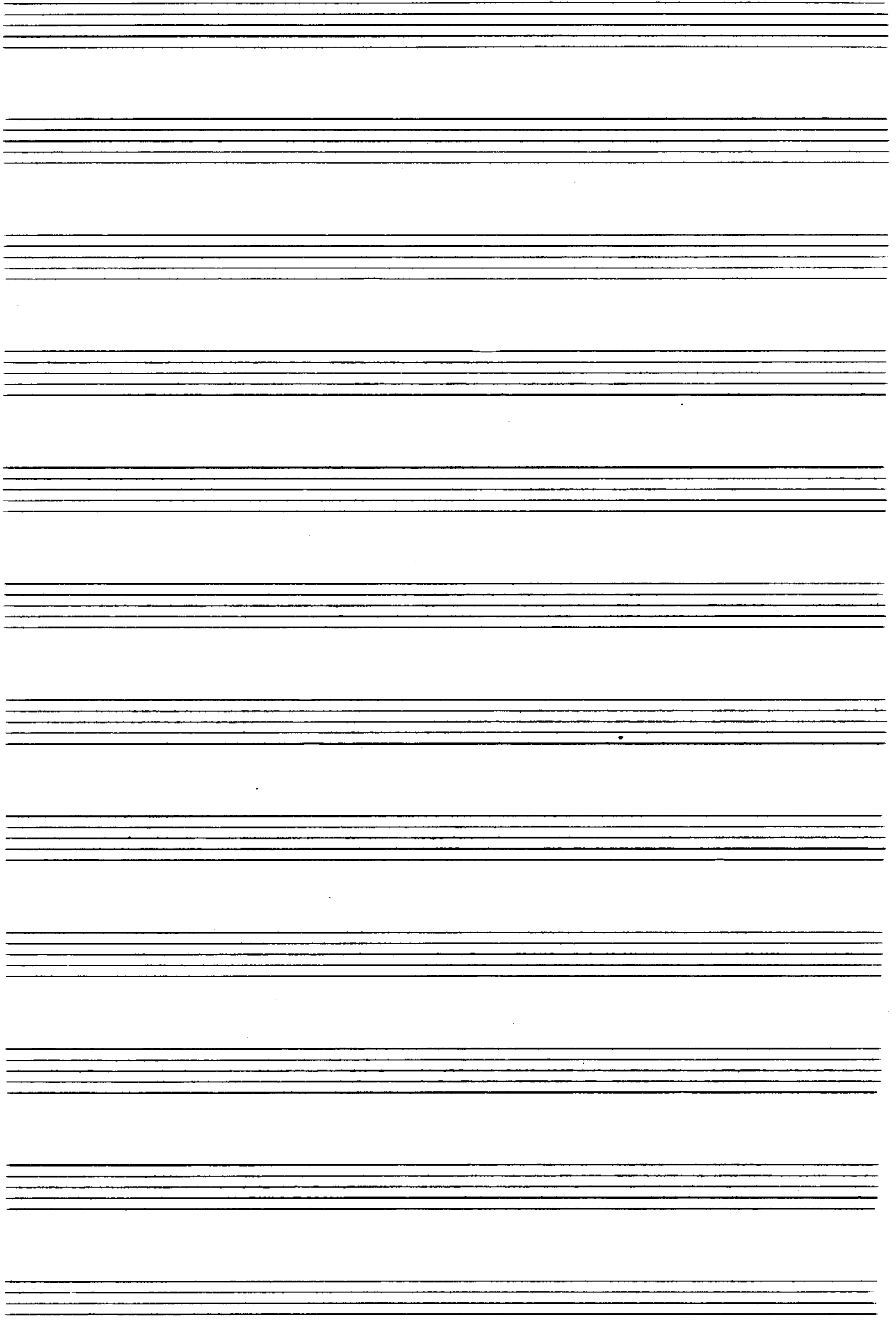
8

Handwritten musical score for the first system, consisting of three staves. The top staff contains a melodic line with notes and rests, marked with a circled 'p'. The middle and bottom staves contain rests and a few notes, also marked with a circled 'p'. A circled '9' is written at the end of the system.

sempre cresc. →

Handwritten musical score for the second system, consisting of three staves. The top staff starts with a 'ppp' dynamic marking and contains a melodic line. The middle staff starts with a circled 'pizz' and 'ppp' dynamic marking. The bottom staff contains a bass line with notes and rests. A 'pizz' dynamic marking is also present at the end of the bottom staff.

Handwritten musical score for the third system, consisting of three staves. The top staff contains a melodic line with notes and rests, marked with a circled '10'. The middle and bottom staves contain bass lines with notes and rests. The system concludes with a double bar line and the text 'D.C. Fin.' written vertically on the right. There are also some handwritten annotations like '(1a)', '(2)', and 'arco'.



Ruhig (Moderato)

Handwritten musical score for four instruments: Flöte (Flute), Oboe, Fag. u. C. (Viola/Cello), and Fas. (Bass). The score is written in 4/4 time with a key signature of two flats (B-flat and E-flat). The tempo is marked 'Ruhig (Moderato)'. The music is written on four staves, with a diagonal line drawn through the first three staves. The notation includes quarter notes, eighth notes, and half notes, with various phrasing slurs and accents.