

Notenheft



Kleine Musik in 3 Teilen

für  
Oboe, Bratsche und  
Cello

1962

Adolf Scherbaum

Aufführung 1989  
Radio LINZ

Aufnahmeleitung:  
Dr. Leopold  
Mayer.

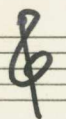
Musikdirektor (Oboe)  
H. Wahl  
Dr. Fischer Cello

# Allepro (Mod.)

OBOE

BRATSCH

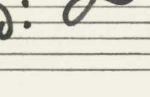
Cello



2



2



Handwritten musical notation for the first system. The Oboe part features a melodic line with slurs and accents. The Viola and Cello parts play a rhythmic accompaniment of quarter notes with accents. Dynamics include *f* (forte).

Handwritten musical notation for the second system. The Oboe part continues with a melodic line, including a circled first ending (1). The Viola and Cello parts provide accompaniment with slurs and accents. Dynamics include *f* (forte).

Handwritten musical notation for the third system. The Oboe part features a melodic line with slurs and accents. The Viola and Cello parts play a rhythmic accompaniment. Dynamics include *fz* (forzando) and *pizz* (pizzicato). A circled second ending (2) is marked at the end of the system.

Handwritten musical score for the first system. It consists of three staves. The top staff is in treble clef and contains a whole rest followed by a half rest, then a quarter note G4 with an accent (^) and a sharp sign (#). The middle staff is in treble clef and contains a circled sharp sign (#) followed by a series of eighth notes: G4, A4, B4, C5, B4, A4, G4, F4, E4, D4, C4. The bottom staff is in bass clef and contains a circled sharp sign (#) followed by a series of eighth notes: G3, F3, E3, D3, C3, B2, A2, G2, F2, E2, D2, C2. There are various dynamic markings and phrasing slurs throughout the system.

Handwritten musical score for the second system. It consists of three staves. The top staff is in treble clef and contains a circled number 3 above a measure, followed by a series of eighth notes: G4, A4, B4, C5, B4, A4, G4, F4, E4, D4, C4. The middle staff is in treble clef and contains a series of eighth notes: G4, A4, B4, C5, B4, A4, G4, F4, E4, D4, C4. The bottom staff is in bass clef and contains a series of eighth notes: G3, F3, E3, D3, C3, B2, A2, G2, F2, E2, D2, C2. There are various dynamic markings and phrasing slurs throughout the system.

Handwritten musical score for the third system. It consists of three staves. The top staff is in treble clef and contains a series of eighth notes: G4, A4, B4, C5, B4, A4, G4, F4, E4, D4, C4. The middle staff is in treble clef and contains a series of eighth notes: G4, A4, B4, C5, B4, A4, G4, F4, E4, D4, C4. The bottom staff is in bass clef and contains a series of eighth notes: G3, F3, E3, D3, C3, B2, A2, G2, F2, E2, D2, C2. There are various dynamic markings and phrasing slurs throughout the system.

Handwritten musical score for the first system. It consists of three staves. The top staff has a treble clef and a key signature of one sharp (F#). The middle and bottom staves are grouped with a brace and have a common time signature. The music includes various note values, rests, and dynamic markings such as *p* and circled numbers 4 and 5. There are also some handwritten annotations like *ttt* and *mf*.

Handwritten musical score for the second system. It features three staves. The top staff has a treble clef and a key signature of one sharp. A handwritten annotation *sempre cresc...* with an arrow points to the right above the staff. The music includes a long melodic line in the upper staff and a more rhythmic accompaniment in the lower staves. Dynamic markings like *p* and *mf* are present.

Handwritten musical score for the third system. It consists of three staves. The top staff has a treble clef and a key signature of one sharp. The middle and bottom staves are grouped with a brace and have a common time signature. The music is characterized by complex rhythmic patterns and dynamic markings such as *mf* and *f*. There are also circled numbers 5 and 6, and some handwritten annotations like *mf* and *f*.

4

OSSIA (OBOE)

tt

(also Rosttafel)

6

7

arco

8

poco rit.



Handwritten musical score for measures 1 and 2. The notation includes notes, rests, and dynamic markings such as *f*, *p*, and *dim*. A circled '1' is above the first measure, and a circled '2' is above the second measure. The word 'N.' is written below the second measure.

Handwritten musical score for measures 3 and 4. The notation includes notes, rests, and dynamic markings such as *p*. A circled '3' is at the end of the first system.

Handwritten musical score for measures 5 and 6. The notation includes notes, rests, and dynamic markings such as *ff*, *p*, and *f*. The word *breit* is written above the first measure. A circled '4' is at the end of the first system. The words *D.C.* and *Fin* are written at the end of the second system.



III.

Presto (So rasch als möglich)

Handwritten musical score for the first system, measures 1-4. It features a grand staff with treble, alto, and bass clefs. The tempo is marked 'Presto' and the instruction '(So rasch als möglich)'. The music includes dynamic markings like 'f' and 'fort.', and articulation marks like accents and slurs. A circled '1' is at the end of the system.

Handwritten musical score for the second system, measures 5-8. It continues the grand staff notation from the first system. It includes dynamic markings like 'f' and 'ff', and articulation marks like accents and slurs. A circled '2' is at the end of the system.

3

Handwritten musical score for measures 1-4. The system includes three staves: Treble clef, Bass clef, and Bass clef. The music features complex textures with many beamed notes and slurs. A circled '3' is at the end of the system.

Handwritten musical score for measures 5-8. The system includes three staves: Treble clef, Treble clef, and Bass clef. The music continues with complex textures and slurs. A circled '4' is at the end of the system.

Handwritten musical score for measures 9-12. The system includes three staves: Treble clef, Bass clef, and Bass clef. The music continues with complex textures and slurs. A circled '4' is at the end of the system.

5

6

7

8

Handwritten musical score for the first system, featuring three staves with treble clefs. The top staff contains a melodic line with a circled 'p' dynamic marking. The bottom staff contains a bass line with a circled 'p' dynamic marking. A circled '9' is written at the end of the system.

*Tempo cresc. →*

Handwritten musical score for the second system, featuring three staves. The top staff is marked 'ppp'. The middle staff is marked 'ppp' and 'pizz'. The bottom staff is marked 'ppp' and 'Pizz'. The system concludes with a double bar line.

Handwritten musical score for the third system, featuring three staves. The system concludes with a double bar line and the word 'Fin.'. To the right, there are handwritten notes: '(1)', '(2)', 'D.C.', and 'Fin.'. At the bottom, there is a circled '10' and the text '(2) + rit'.



# Ruhig (Moderato)

Handwritten musical score for four parts: Flöte, Oboe, Fag. u. C., and Fag. The score is marked "Ruhig (Moderato)" and is in 4/4 time. The key signature has two flats (B-flat and E-flat). The score is crossed out with a diagonal line.

**Flöte** (Treble clef, two flats):  
Measure 1: Quarter notes G4, A4, Bb4.  
Measure 2: Quarter notes C5, Bb4, A4.  
Measure 3: Quarter notes G4, F4, E4.  
Measure 4: Half note D4.

**Oboe** (Treble clef, two flats):  
Measure 1: Quarter notes G4, A4.  
Measure 2: Quarter notes Bb4, C5.  
Measure 3: Quarter notes D5, E4.  
Measure 4: Half note D4.

**Fag. u. C.** (Bass clef, two flats):  
Measure 1: Quarter notes D3, D3.  
Measure 2: Quarter notes D3, D3.  
Measure 3: Quarter notes E3, F3.  
Measure 4: Half note G2.

**Fag.** (Bass clef, two flats):  
Measure 1: Quarter notes G2, A2.  
Measure 2: Quarter notes Bb2, C3.  
Measure 3: Quarter notes D3, E3.  
Measure 4: Half note F3.