

Stücke für
Orgel
(Elektronenorgel)
ad. libitum
1962

Adolf Scherbaum

Notenheft



Preludes

für gr. Orgel

1962

A. Scherbaum

I.

langsam (6/8)

Handwritten musical notation for the first system, including a grand staff with treble and bass clefs, a 6/8 time signature, a *pp* dynamic marking, and a circled measure number 1.

Handwritten musical notation for the second system, including a grand staff with treble and bass clefs, a circled measure number 2.

Handwritten musical notation for the third system, including a grand staff with treble and bass clefs, a circled measure number 3, and a circled *p* dynamic marking.

Handwritten musical notation for the fourth system, including a grand staff with treble and bass clefs, a circled measure number 4, and a circled *f* dynamic marking.

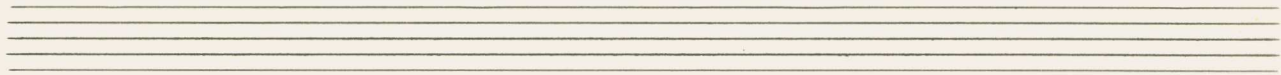


grace

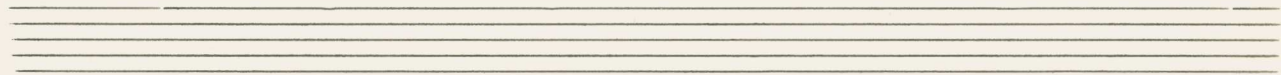
①

②

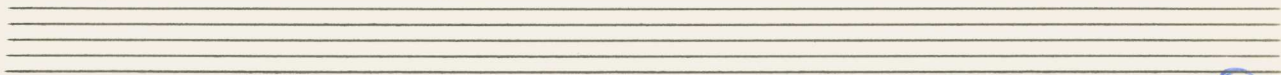
FIN.



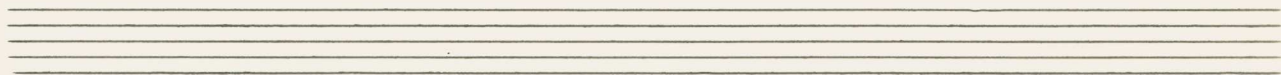
Handwritten musical notation for the first system, consisting of two staves. The upper staff is in treble clef and the lower in bass clef. The music features a series of eighth and sixteenth notes, with a large blue slur spanning across both staves.



Handwritten musical notation for the second system, including a circled number 3 at the end. The notation continues with two staves, showing a mix of eighth and sixteenth notes with a large blue slur.



Handwritten musical notation for the third system, including a circled number 4 at the end. The notation continues with two staves, featuring a key signature change to one sharp (F#) and a large blue slur.



Handwritten musical notation for the fourth system, including a circled number 5 and the text "D.C. ad Fin". The notation concludes with two staves, showing a final cadence with a large blue slur.

III.

breit (pesante)

①

②

③

④

Handwritten musical notation for the first system. The treble clef staff contains a series of eighth notes with a sharp sign (#) below the first measure, followed by a whole rest. The bass clef staff contains a whole rest followed by a series of eighth notes.

Handwritten musical notation for the second system. The treble clef staff has a circled '10' at the beginning and a circled '5' above a measure containing a complex chordal structure. The bass clef staff contains a series of eighth notes.

Handwritten musical notation for the third system. The treble clef staff has a circled '8' at the end and contains several groups of notes, some with slurs. The bass clef staff contains a series of eighth notes.

Handwritten musical notation for the fourth system. The treble clef staff ends with a double bar line and the word 'Fine' written above it. The bass clef staff contains a series of notes with slurs and a sharp sign (#) below.

IV.

Rasch

Handwritten musical notation for the first system. It consists of two staves. The top staff is in treble clef with a 9/8 time signature and a mezzo-forte (mf) dynamic marking. The bottom staff is in bass clef. The music features a melodic line in the right hand with slurs and accents, and a supporting bass line in the left hand. The system is divided into two measures by a bar line.

Handwritten musical notation for the second system. It consists of two staves. The top staff is in treble clef and the bottom staff is in bass clef. The music continues with a melodic line in the right hand and a bass line in the left hand. The system is divided into two measures by a bar line. A circled number '1' is written at the end of the system.

Handwritten musical notation for the third system. It consists of two staves. The top staff is in treble clef and the bottom staff is in bass clef. The music continues with a melodic line in the right hand and a bass line in the left hand. The system is divided into two measures by a bar line. A circled number '2' is written at the end of the system.

Handwritten musical notation for the fourth system. It consists of two staves. The top staff is in treble clef and the bottom staff is in bass clef. The music continues with a melodic line in the right hand and a bass line in the left hand. The system is divided into two measures by a bar line. A circled number '3' is written at the end of the system.

4

Handwritten musical notation for system 4, measures 1-2. The system consists of two staves. The upper staff is in treble clef with a key signature of one sharp (F#). It contains two measures of music, each with a slur over a series of eighth notes. The lower staff is in bass clef with a key signature of one sharp (F#). It contains two measures of music, each with a slur over a series of eighth notes.

Handwritten musical notation for system 4, measures 3-4. The system consists of two staves. The upper staff is in treble clef with a key signature of one sharp (F#). It contains two measures of music, each with a slur over a series of eighth notes. The lower staff is in bass clef with a key signature of one sharp (F#). It contains two measures of music, each with a slur over a series of eighth notes.

5

Handwritten musical notation for system 5, measures 1-2. The system consists of two staves. The upper staff is in treble clef with a key signature of one sharp (F#). It contains two measures of music, each with a slur over a series of eighth notes. The lower staff is in bass clef with a key signature of one sharp (F#). It contains two measures of music, each with a slur over a series of eighth notes.

6

Handwritten musical notation for system 6, measures 1-4. The system consists of two staves. The upper staff is in treble clef with a key signature of one sharp (F#). It contains four measures of music, each with a slur over a series of eighth notes. The lower staff is in bass clef with a key signature of one sharp (F#). It contains four measures of music, each with a slur over a series of eighth notes. The system ends with a double bar line and the word "FIN" written vertically.

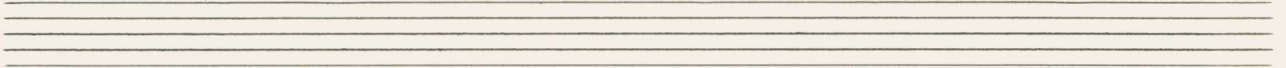
V.

Ruhig (fließend (einfach))

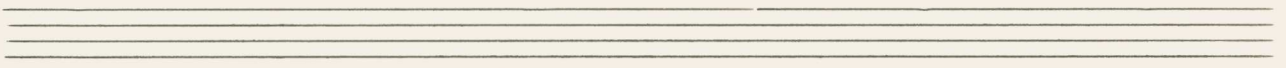
Handwritten musical notation for the first system, measures 1-3. It features a grand staff with treble and bass clefs. The right hand has a melody with eighth notes and a slur. The left hand has a simple accompaniment. A circled 'p' is in the first measure, and a circled '1' is at the end of the system.

Handwritten musical notation for the second system, measures 4-6. The right hand has a melody with a slur and a circled 'p'. The left hand has a more complex accompaniment with eighth notes and slurs. A circled '2' is at the end of the system.

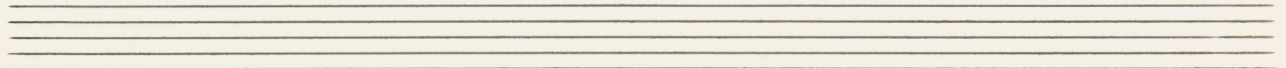
Handwritten musical notation for the third system, measures 7-9. The right hand has a melody with a slur and a circled 'p'. The left hand has a simple accompaniment. The word "Tempo" is written above the second measure. A circled 'p' is in the first measure of the system.



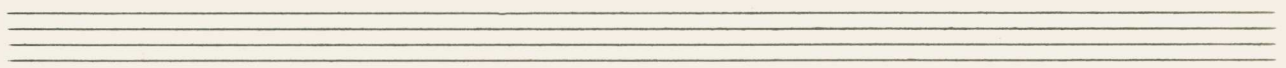
Handwritten musical notation for the first system, consisting of two staves. The upper staff features a melodic line with a slur over the first two measures and a fermata over the final note. The lower staff contains a rhythmic accompaniment with eighth notes and rests.



Handwritten musical notation for the second system, consisting of two staves. A circled number '3' is written above the first measure of the upper staff. The upper staff has a melodic line with a slur and a fermata. The lower staff has a rhythmic accompaniment with a fermata in the second measure. The word 'auf' is written below the first measure of the lower staff.



Handwritten musical notation for the third system, consisting of two staves. The upper staff has a melodic line with a slur and a fermata. The lower staff has a rhythmic accompaniment with a slur and a fermata. The word 'pp >' is written to the left of the first measure of the upper staff.



Handwritten musical notation for the fourth system, consisting of two staves. The upper staff has a melodic line with a slur and a fermata. The lower staff has a rhythmic accompaniment with a slur and a fermata. The word 'rit' is written below the first measure of the lower staff, and the word 'Fine' is written above the final measure of the upper staff.

VI.

breit (Andante)

pesante

FINE
f.p.

Allegro

f

⑦

⑧

⑨

⑩

2+ Dc4
or F#4

VIII.

breite $\frac{3}{4}$

3
4 #

1

2

3

4

5

6

lange halten

VIII

lento

sehr ruhig

①

②

③ FIN

IX.

Presto

Handwritten musical notation for the first system of a prelude. It features a grand staff with a treble clef and a 3/8 time signature. The key signature has one sharp (F#). The music consists of four measures of chords in the right hand and eighth-note patterns in the left hand. A circled '1' is at the end of the system.

Handwritten musical notation for the second system of a prelude. It features a grand staff with a treble clef and a key signature of one flat (Bb). The music consists of four measures of chords in the right hand and eighth-note patterns in the left hand. A circled '2' is at the end of the system.

Handwritten musical notation for the third system of a prelude. It features a grand staff with a treble clef and a key signature of one sharp (F#). The music consists of four measures of chords in the right hand and eighth-note patterns in the left hand. A circled '3' is above the second measure and a circled '4' is at the end of the system.

letzte 2+
anhalten

Handwritten musical notation for the first system, measures 1-5. The right hand has a melodic line with slurs and a fermata at measure 5. The left hand has a bass line with slurs. A circled '5' and the word 'FINE' are at the end.

Handwritten musical notation for the second system, measures 6-7. Both hands have long slurs over the measures. A circled '6' is above measure 6 and a circled '7' is above measure 7.

Handwritten musical notation for the third system, measures 8-13. The right hand has a melodic line with slurs. The left hand has a bass line with slurs. A circled '8' is at the end.

Handwritten musical notation for the fourth system, measures 14-19. Both hands have long slurs over the measures. A circled '19' is at the end. The text '2+t D.C. al. Fine' is written on the right.

I.

breit

f 6/4 *perpetua*

frei

frei

breit

breit

4

ad. lib.

5

6

7

8

Fin

2te x per rit...

F.

sehr ruhig (auf 6)

①

einfach (schlicht)

①

letzte + pr. gut...

②

FINE

Handwritten musical notation on a grand staff. The right hand part begins with a circled '1' and a dynamic marking 'p' (piano). Above the staff, there are handwritten notes: '10+p' with an arrow pointing to the right, and '(26+77)' below it. The music consists of several measures with various notes and accidentals, including sharps and naturals.

Handwritten musical notation on a grand staff, starting with a circled '3'. The right hand part has a circled '4' at the end of the first measure. The left hand part has a circled '3' above the first measure. The music includes notes with flats and naturals, and a dynamic marking 'mf' (mezzo-forte) in the left hand.

Handwritten musical notation on a grand staff, starting with a circled '5' and the instruction 'pesante' (heavy). The right hand part has a circled '6' at the end of the first measure. The left hand part has a circled '5' above the first measure. The music includes notes with sharps and naturals. At the end of the piece, there is a circled '6' and the instruction 'D.C. al Fine'.

XII

Finale

appassionata:

frei

fff

1

Handwritten musical notation for the first system, featuring a treble and bass clef with melodic lines and a forte dynamic marking.

Handwritten musical notation for the second system, showing a treble clef and a series of sixteenth-note runs.

Handwritten musical notation for the third system, continuing the sixteenth-note runs in the treble clef.

Handwritten musical notation for the fourth system, including sixteenth-note runs and chordal structures with circled numbers 2 and 3.

④

Handwritten musical score for measures 4 and 5. Measure 4 shows a treble clef with a whole rest and a bass clef with a whole note chord. Measure 5 shows a treble clef with a whole rest and a bass clef with a whole note chord. The bass clef chords are annotated with notes and accidentals.

⑤

Handwritten musical score for measures 6 and 7. Measure 6 shows a treble clef with a whole rest and a bass clef with a whole note chord. Measure 7 shows a treble clef with a whole rest and a bass clef with a whole note chord. The bass clef chords are annotated with notes and accidentals.

breit

⑥

Handwritten musical score for measures 8 and 9. Measure 8 shows a treble clef with a whole note chord and a bass clef with a whole note chord. Measure 9 shows a treble clef with a whole note chord and a bass clef with a whole note chord. The bass clef chords are annotated with notes and accidentals.

⑦

⑧

ritard.

Presto
2/4

Handwritten musical score for measures 10 and 11. Measure 10 shows a treble clef with a whole note chord and a bass clef with a whole note chord. Measure 11 shows a treble clef with a whole note chord and a bass clef with a whole note chord. The bass clef chords are annotated with notes and accidentals.

Presto

Handwritten musical notation for the first system, featuring a treble clef, a 2/4 time signature, and a circled '1' at the end of the system.

Handwritten musical notation for the second system, featuring a treble clef and a circled '2' at the end of the system.

Handwritten musical notation for the third system, featuring a treble clef and a bass clef.

Handwritten musical notation for system 3, measures 3-4. The system consists of two staves. The upper staff is in treble clef and contains a melodic line with a slur over measures 3 and 4. The lower staff is in bass clef and contains a rhythmic accompaniment with slurs and accents. A circled number '3' is written at the end of the system.

Handwritten musical notation for system 4, measures 5-6. The system consists of two staves. The upper staff is in treble clef and contains a melodic line with a slur over measures 5 and 6. The lower staff is in bass clef and contains a rhythmic accompaniment with slurs and accents. A circled number '4' is written at the end of the system.

Handwritten musical notation for system 5, measures 7-8. The system consists of two staves. The upper staff is in treble clef and contains a melodic line with a slur over measures 7 and 8. The lower staff is in bass clef and contains a rhythmic accompaniment with slurs and accents. A circled number '5' is written at the end of the system.

Handwritten musical notation for system 6, measures 9-10. The system consists of two staves. The upper staff is in treble clef and contains a melodic line with a slur over measures 9 and 10. The lower staff is in bass clef and contains a rhythmic accompaniment with slurs and accents. A circled number '6' is written at the end of the system.

Handwritten musical notation for measures 6 and 7. Measure 6 is circled with a '6'. The notation is in G major, 4/4 time. The right hand has a melodic line with a fermata over the first two notes. The left hand has a bass line with a fermata over the first two notes. Measure 7 is circled with a '7'. The right hand continues the melodic line. The left hand continues the bass line.

Handwritten musical notation for measure 8. Measure 8 is circled with an '8'. The right hand has a melodic line with a fermata over the first two notes. The left hand has a bass line with a fermata over the first two notes.

Handwritten musical notation for measure 9. Measure 9 is circled with a '9'. The right hand has a melodic line with a fermata over the first two notes. The left hand has a bass line with a fermata over the first two notes.

Handwritten musical notation for measure 10. Measure 10 is circled with a '10'. The right hand has a melodic line with a fermata over the first two notes. The left hand has a bass line with a fermata over the first two notes.

Handwritten musical notation for measure 11. The system consists of two staves. The upper staff is in treble clef with a key signature of one flat (B-flat). It contains a melodic line with a slur over the first two measures and a fermata over the final note. The lower staff is in bass clef and contains a bass line with chords and rhythmic markings. A circled number '11' is at the end of the system.

Handwritten musical notation for measure 12. The system consists of two staves. The upper staff is in treble clef with a key signature of one flat (B-flat). It contains a melodic line with a slur over the first two measures and a fermata over the final note. The lower staff is in bass clef and contains a bass line with chords and rhythmic markings. A circled number '12' is at the end of the system.

Handwritten musical notation for measure 13. The system consists of two staves. The upper staff is in treble clef with a key signature of one flat (B-flat). It contains a melodic line with a slur over the first two measures and a fermata over the final note. The lower staff is in bass clef and contains a bass line with chords and rhythmic markings. A circled number '13' is at the end of the system.

Handwritten musical notation for measure 14. The system consists of two staves. The upper staff is in treble clef with a key signature of one flat (B-flat). It contains a melodic line with a slur over the first two measures and a fermata over the final note. The lower staff is in bass clef and contains a bass line with chords and rhythmic markings. A circled number '14' is at the end of the system.

Handwritten musical notation for measures 14 and 15. The system consists of two staves. Measure 14 is circled on the left, and measure 15 is circled on the right. The music is written in blue ink. The upper staff has a treble clef and a sharp sign (#). The lower staff has a bass clef. Both staves feature a long slur over the notes. The notes in the upper staff are mostly quarter notes, while the lower staff has more complex rhythmic patterns with some beamed notes.

Handwritten musical notation for measures 16 and 17. The system consists of two staves. Measure 16 is circled on the right. The music is written in blue ink. The upper staff has a treble clef and a sharp sign (#). The lower staff has a bass clef. Both staves feature a long slur over the notes. The notes in the upper staff are mostly quarter notes, while the lower staff has more complex rhythmic patterns with some beamed notes.

Handwritten musical notation for measures 18 and 19. The system consists of two staves. Measure 18 is circled on the right. The music is written in blue ink. The upper staff has a treble clef and a sharp sign (#). The lower staff has a bass clef. Both staves feature a long slur over the notes. The notes in the upper staff are mostly quarter notes, while the lower staff has more complex rhythmic patterns with some beamed notes.

Handwritten musical notation for measures 20 and 21. The system consists of two staves. Measure 20 is circled on the right. The music is written in blue ink. The upper staff has a treble clef and a sharp sign (#). The lower staff has a bass clef. Both staves feature a long slur over the notes. The notes in the upper staff are mostly quarter notes, while the lower staff has more complex rhythmic patterns with some beamed notes.

Handwritten musical notation for the first system. The treble clef staff has a circled '79' at the end. The bass clef staff has a circled '78' at the end. The notation consists of several chords in the treble and a few notes in the bass.

Handwritten musical notation for the second system. The treble staff contains eighth notes with stems pointing down. The bass staff contains a triplet of eighth notes with stems pointing down.

Handwritten musical notation for the third system. The treble staff is filled with a dense, scribbled texture. The bass staff contains a triplet of eighth notes with stems pointing down. A handwritten note in German is present: "(von hier bis ~~2~~ kaum 5-10x wiederholt werden)".

Handwritten musical notation for the fourth system. The treble staff is filled with a dense, scribbled texture. The bass staff contains a few notes with stems pointing down. A handwritten note in German is present: "lange halten #4". A 'Fine' marking is also present.