

**Notenheft**

Sonate 1962

für

Flöte und Cembalo

Adolf Scherbaum

Moderato (ruhig fließend)

(erst 2. + spielen bis □)

Flöte

C  
E  
M  
B  
A  
L  
O

The first system of the handwritten musical score consists of two staves. The top staff is for the Flute, written in treble clef with a 4/4 time signature. It begins with a dynamic marking of *mp* and a slur over the first two notes. The notes are G4, A4, Bb4, and C5. The bottom staff is for the Cembalo, also in treble clef with a 4/4 time signature. It starts with a circled 'P' and contains a sequence of eighth notes: G4, Ab4, Bb4, C5, G4, Ab4, Bb4, C5. A large slur covers the entire system.

The second system of the handwritten musical score consists of three staves. The top staff is for the Flute, starting with a dynamic marking of *pp* and a slur over the first note, G4. The middle staff is for the Cembalo, containing a sequence of eighth notes: G4, Ab4, Bb4, C5, G4, Ab4, Bb4, C5. The bottom staff is for the Cembalo, containing a sequence of eighth notes: G4, Ab4, Bb4, C5, G4, Ab4, Bb4, C5. A large slur covers the entire system.

Handwritten musical score for the first system. It consists of three staves: a top treble staff, a middle treble staff, and a bottom bass staff. The top staff begins with a treble clef, a sharp sign, and a dynamic marking of *hp*. It contains a half note with an accent (^) and a fermata. The middle staff has a treble clef and contains a half note with a flat sign and a fermata. The bottom staff has a bass clef and contains a half note with a sharp sign and a fermata. A second measure follows, with a treble clef, a dynamic marking of *pp*, and a half note with an accent (^). The middle staff continues with a half note with a flat sign and a fermata. The bottom staff has a bass clef and contains a half note with a sharp sign and a fermata. A dynamic marking of *mf* is placed between the middle and bottom staves.

Handwritten musical score for the second system. It consists of three staves: a top treble staff, a middle treble staff, and a bottom bass staff. The top staff begins with a treble clef, a sharp sign, and a dynamic marking of *hp*. It contains a half note with an accent (^) and a fermata. The middle staff has a treble clef and contains a half note with a flat sign and a fermata. The bottom staff has a bass clef and contains a half note with a sharp sign and a fermata. A second measure follows, with a treble clef, a dynamic marking of *f*, and a half note with an accent (^). The middle staff continues with a half note with a flat sign and a fermata. The bottom staff has a bass clef and contains a half note with a sharp sign and a fermata. A dynamic marking of *f* is placed between the middle and bottom staves.

Handwritten musical score for the third system. It consists of three staves: a top treble staff, a middle treble staff, and a bottom bass staff. The top staff begins with a treble clef, a sharp sign, and a dynamic marking of *hp*. It contains a half note with an accent (^) and a fermata. The middle staff has a treble clef and contains a half note with a flat sign and a fermata. The bottom staff has a bass clef and contains a half note with a sharp sign and a fermata. A second measure follows, with a treble clef, a dynamic marking of *f*, and a half note with an accent (^). The middle staff continues with a half note with a flat sign and a fermata. The bottom staff has a bass clef and contains a half note with a sharp sign and a fermata. A dynamic marking of *f* is placed between the middle and bottom staves.

Handwritten musical score for the first system. The top staff is in treble clef and contains a series of notes with various accidentals (sharps, flats, naturals) and a fermata. Above the staff, there are handwritten symbols: a triangle with a circle inside, and a series of symbols including a double bar line with a sharp, a double bar line with a sharp, a flat, a sharp, a flat, and a circle with a horizontal line underneath. The bottom two staves (grand staff) show rhythmic patterns with eighth and sixteenth notes, some with slurs and accents.

Handwritten musical score for the second system. The top staff is in treble clef and contains a melodic line with various accidentals and slurs. The bottom two staves (grand staff) show chordal accompaniment with notes and slurs, including some notes with accents.

Handwritten musical score for the third system. The top staff is in treble clef and contains a melodic line with various accidentals, slurs, and a triplet of eighth notes. The bottom two staves (grand staff) show chordal accompaniment with notes and slurs, including some notes with accents.

Handwritten musical score for the first system. The top staff (flute) contains a melodic line with various accidentals (sharps, naturals, flats) and a fermata. The bottom staff (piano) contains a chordal accompaniment with a fermata.

Handwritten musical score for the second system. The top staff (flute) has a melodic line with a circled 'D' at the end. The bottom staff (piano) has a chordal accompaniment. A dynamic marking 'din >' is written above the piano staff.

Handwritten musical score for the third system. The top staff (flute) has a melodic line with a circled 'D' at the end. The bottom staff (piano) has a chordal accompaniment. Dynamic markings 'pp' and 'p' are present. A circled 'D' is at the end of the system.

sehr ruhige  $\frac{4}{4}$  (Adagio)

Handwritten musical score for the first system. The top staff is for the flute, and the bottom two staves are for the piano. The key signature is one flat (B-flat major or F minor), and the time signature is 4/4. The flute part begins with a whole rest, followed by a melodic line starting on G4, moving to A4, Bb4, and then a half note G4. The piano accompaniment starts with a half note G3, followed by a quarter note A3, and then a series of quarter notes: Bb3, A3, G3, F3, E3, D3. The piano part is marked *pp*. The system concludes with a whole note G3 in the piano part and a half note G4 in the flute part.

Handwritten musical score for the second system. The flute part continues with a melodic line: G4, A4, Bb4, A4, G4, F4, E4, D4. The piano accompaniment continues with a series of quarter notes: C3, B2, A2, G2, F2, E2, D2, C2. The piano part is marked *pp*. The system concludes with a whole note G3 in the piano part and a half note G4 in the flute part.

Handwritten musical score for the third system. The flute part begins with a whole rest, followed by a melodic line starting on G4, moving to A4, Bb4, and then a half note G4. The piano accompaniment starts with a half note G3, followed by a quarter note A3, and then a series of quarter notes: Bb3, A3, G3, F3, E3, D3. The piano part is marked *pp*. The system concludes with a whole note G3 in the piano part and a half note G4 in the flute part.





Tempo ① ———— Tempoänderung bis Presto

Handwritten musical notation for the first system. It includes a treble clef staff with a key signature of one flat (B-flat) and a common time signature. The piano accompaniment is written in a grand staff (treble and bass clefs). Above the first measure, there are handwritten notes: a circled '1', a circled '2', and a circled '3'. Above the second measure, there are handwritten notes: a circled '4', a circled '5', a circled '6', a circled '7', and a circled '8'. Above the third measure, there are handwritten notes: a circled '9', a circled '10', a circled '11', a circled '12', and a circled '13'. The piano part features a series of chords and melodic lines, with some notes marked with 'f' (forte) and 'p' (piano).

Handwritten musical notation for the second system. It includes a treble clef staff with a key signature of one flat (B-flat) and a common time signature. The piano accompaniment is written in a grand staff. Above the first measure, there are handwritten notes: a circled '14', a circled '15', a circled '16', a circled '17', and a circled '18'. Above the second measure, there are handwritten notes: a circled '19', a circled '20', a circled '21', and a circled '22'. Above the third measure, there are handwritten notes: a circled '23', a circled '24', a circled '25', and a circled '26'. The piano part features a series of chords and melodic lines, with some notes marked with 'f' (forte) and 'p' (piano).

Handwritten musical notation for the third system, labeled "Presto". It includes a treble clef staff with a key signature of one flat (B-flat) and a common time signature. The piano accompaniment is written in a grand staff. Above the first measure, there are handwritten notes: a circled '27', a circled '28', a circled '29', and a circled '30'. Above the second measure, there are handwritten notes: a circled '31', a circled '32', a circled '33', and a circled '34'. The piano part features a series of chords and melodic lines, with some notes marked with 'f' (forte) and 'p' (piano).

Handwritten musical score for the first system. The top staff is for the flute, showing a melodic line with various accidentals (sharps, flats, naturals) and a slur. The bottom two staves are for the piano, with chords and rests.

Handwritten musical score for the second system. It shows a piano accompaniment with chords and a wavy line above the staff, possibly indicating a tremolo or a specific performance instruction.

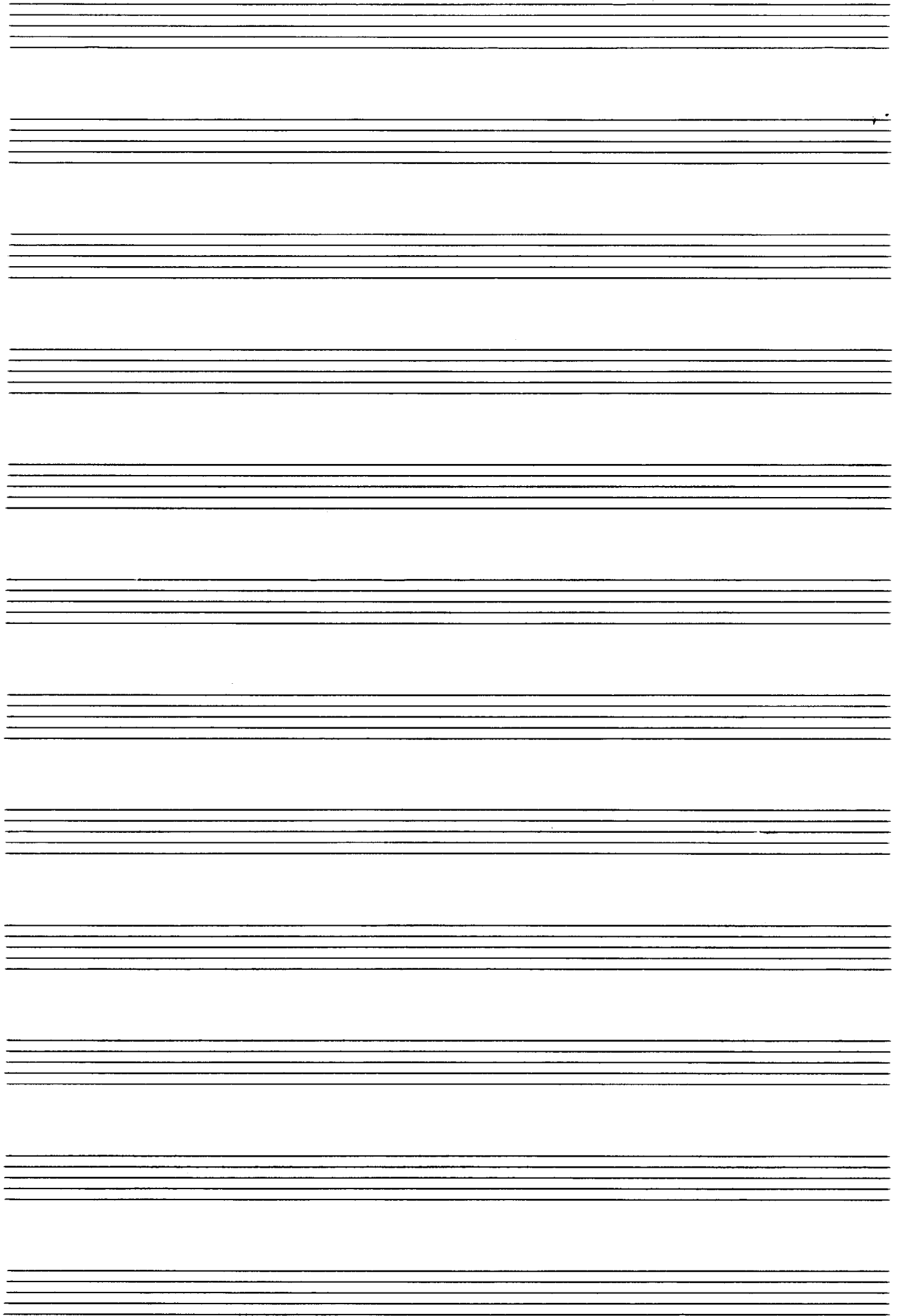
Handwritten musical score for the third system. The top staff is for the flute, showing chords and a slur. The bottom two staves are for the piano, with chords and rests.

Handwritten musical score for the fourth system. It shows a piano accompaniment with chords and a wavy line above the staff, similar to the second system.

Handwritten musical score for the fifth system. The top staff is for the flute, showing a melodic line with various accidentals and a slur. The bottom two staves are for the piano, with chords and rests.

Handwritten musical notation for a flute and piano piece. The notation includes a treble clef staff with a key signature of one flat (B-flat) and a common time signature. Below it, a grand staff (piano) is shown with a treble clef and a common time signature. The piano part has a key signature of one sharp (F#) and a common time signature. The word "Fine" is written in the flute staff. There are various handwritten annotations, including a circled "b" and a circled "c".

A series of ten empty musical staves, each consisting of five horizontal lines, arranged vertically on the page.



2

lento  $\frac{8}{8}$

Handwritten musical score for the first system. The flute part (top staff) begins with a dynamic marking of *pp* and contains a melodic line with various accidentals (flats and naturals) and a slur. The piano accompaniment (bottom two staves) consists of chords and single notes, with a dynamic marking of *pp* and a slur. The system concludes with a repeat sign.

Handwritten musical score for the second system. The flute part (top staff) continues the melodic line with a dynamic marking of *pp* and a slur. The piano accompaniment (bottom two staves) continues with chords and single notes, also marked with *pp* and a slur. The system concludes with a repeat sign.

Handwritten musical score for the first system. The top staff is in treble clef, showing a melodic line with various accidentals and slurs. The bottom two staves are a grand staff (piano and cello/bass), with the piano part having a treble clef and the cello/bass part having a bass clef. Dynamic markings include 'f'.

Handwritten musical score for the second system, starting with the word "Vivace" above the treble clef staff. The music is more complex, with many accidentals and slurs. Dynamic markings include 'p' (piano) in circles. The grand staff continues with piano and cello/bass parts.

Handwritten musical score for the third system. The top staff has a treble clef and a long horizontal line, possibly indicating a rest or a specific performance instruction. The grand staff below shows a melodic line in the piano part and accompaniment in the cello/bass part. Dynamic markings include 'pp' (pianissimo).

Handwritten musical score for the first system. The top staff is for the flute, starting with a *pp* dynamic marking. It features a triplet of eighth notes with accidentals (b, b, b) and a sharp sign. The bottom two staves are for the piano, with a *pp* dynamic marking. The piano part consists of a steady eighth-note accompaniment in the right hand and a similar accompaniment in the left hand.

Handwritten musical score for the second system. The top staff (flute) begins with a *mf* dynamic marking and contains a melodic line with various accidentals. The bottom two staves (piano) start with a *mf* dynamic marking and transition to a *f* dynamic marking. The piano accompaniment continues with eighth notes, and there are some handwritten annotations like "ff" and "f" near the piano part.

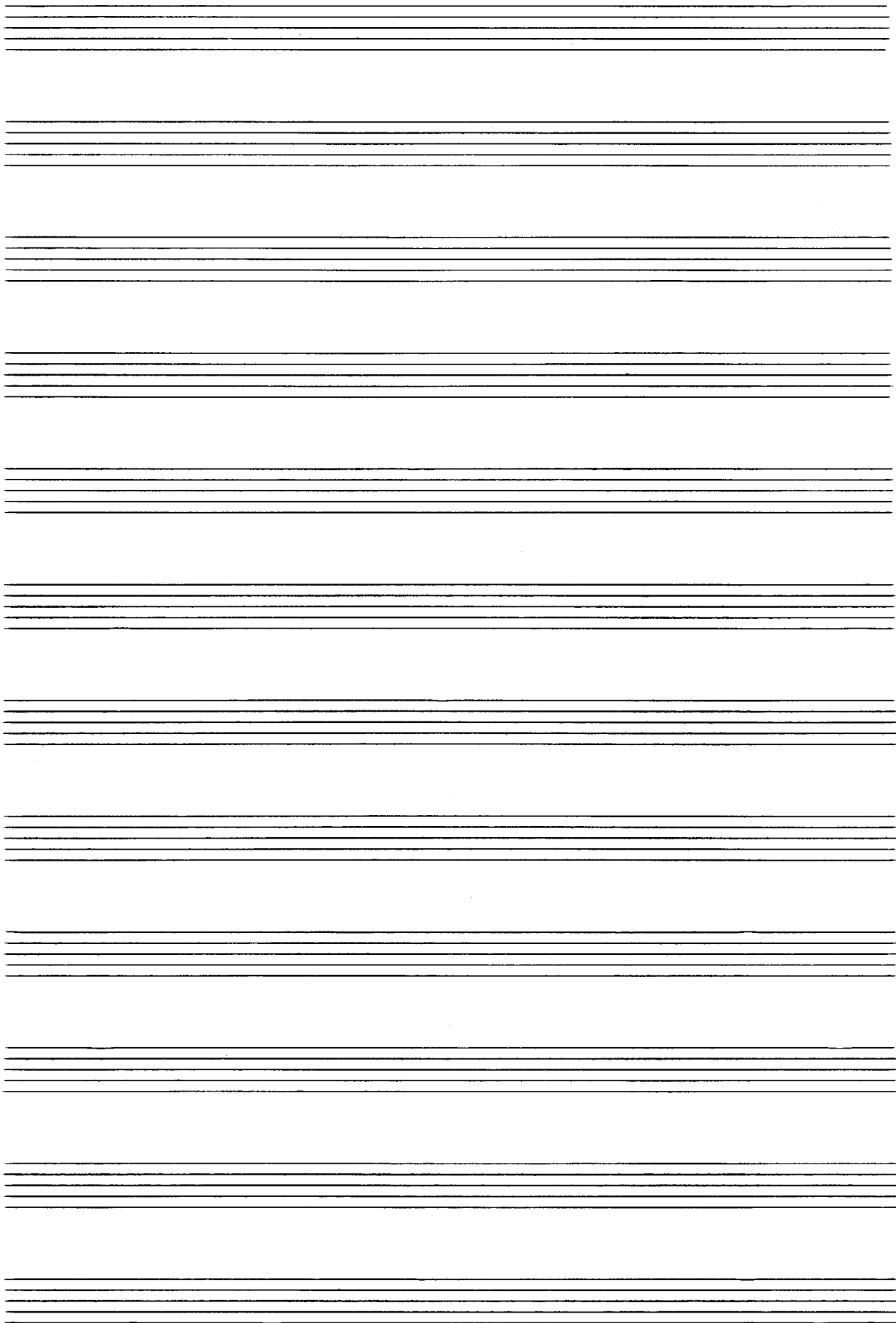
Handwritten musical score for the third system. The top staff (flute) starts with a *pp* dynamic marking and includes a sharp sign. The bottom two staves (piano) begin with a *pp* dynamic marking and feature rests in the right hand, with some notes in the left hand. The system concludes with a *mf* dynamic marking in the flute part.

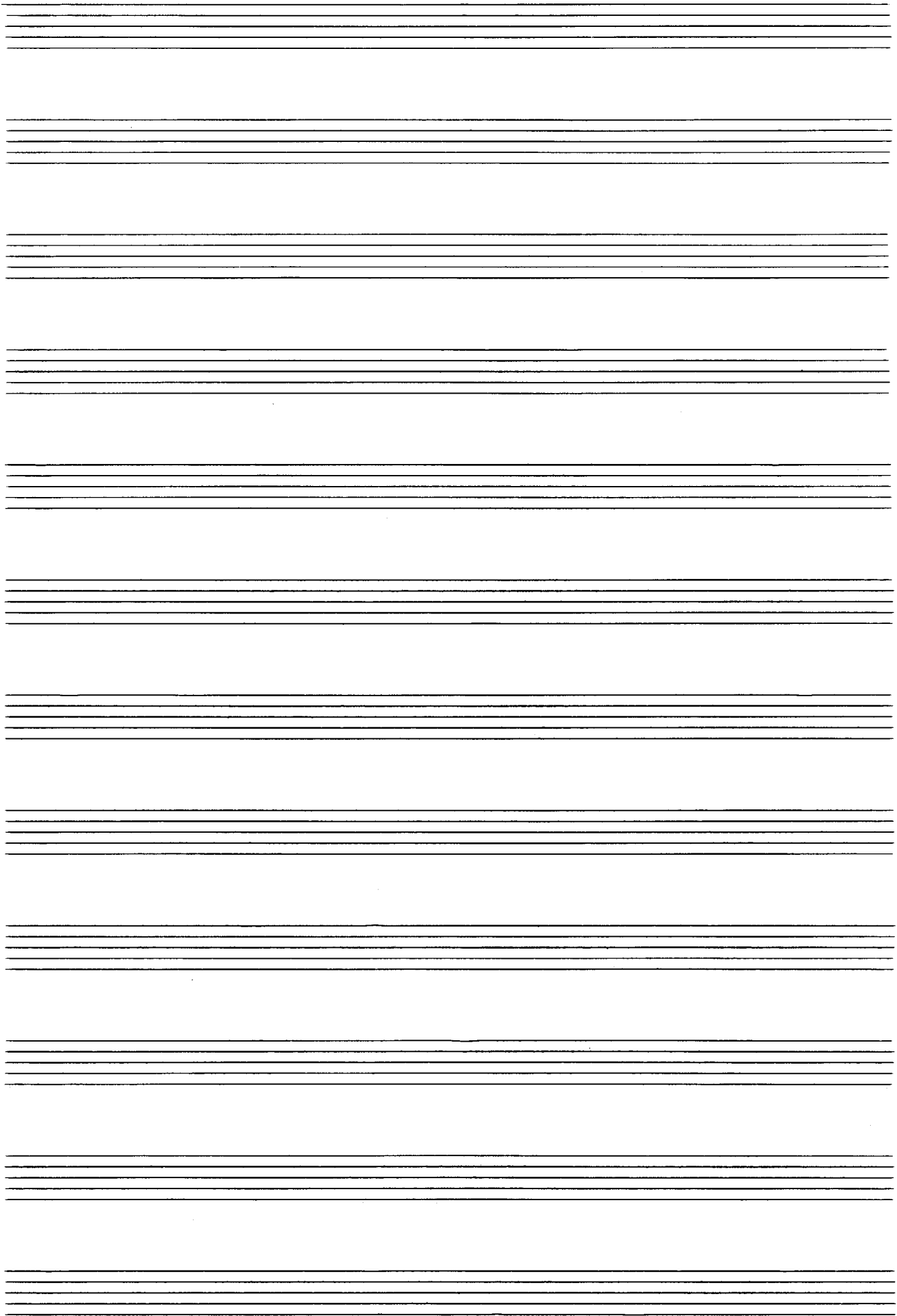
Handwritten musical score for the first system. It consists of three staves: a treble clef staff at the top, and a grand staff (treble and bass clefs) below. The treble staff contains notes with accidentals (flats and naturals) and dynamic markings such as *f* and *mf*. The grand staff contains notes with accidentals and dynamic markings like *mf* and *f*. There are also some handwritten annotations like "7 4 4 4" and "4 4" above the treble staff.

Handwritten musical score for the second system. It consists of three staves: a treble clef staff at the top, and a grand staff (treble and bass clefs) below. The treble staff has notes with accidentals and dynamic markings like *pp*. The grand staff has notes with accidentals and dynamic markings like *ppp*. A handwritten instruction "(26+ gr. rit)" is written in the bass staff. To the right of the system, there are some handwritten notes including "D.C." and a large closing brace.

Handwritten musical score for the third system. It consists of three staves: a treble clef staff at the top, and a grand staff (treble and bass clefs) below. The treble staff has notes with accidentals and dynamic markings like *ppp*. The grand staff has notes with accidentals and dynamic markings like *ppp*. There is a large, sweeping handwritten line across the bottom of the system.







3

Presto

Handwritten musical notation for the first system, measures 1-4. The top staff is a treble clef with a 3-measure rest. The middle and bottom staves are a grand staff with chords and accents. The chords in the middle staff are G#2, G#2, G#2, G#2. The chords in the bottom staff are G#2, G#2, G#2, G#2. There are accents (^) above each chord.

Handwritten musical notation for the second system, measures 5-8. The top staff has a melodic line with a slur and a fermata. The middle and bottom staves have chords and accents. The chords in the middle staff are G#2, G#2, G#2, G#2. The chords in the bottom staff are G#2, G#2, G#2, G#2. There are accents (^) above each chord.

Handwritten musical score for the first system. The top staff (flute) contains four measures with notes and slurs. The second staff (piano) shows chords with sharps and naturals. The third staff (piano) shows bass notes.

Handwritten musical score for the second system. The top staff (flute) contains four measures with notes and slurs. The second staff (piano) shows chords with flats and naturals. The third staff (piano) shows bass notes.

Handwritten musical score for the third system. The top staff (flute) contains three measures with notes and slurs. The second staff (piano) shows chords with flats and naturals. The third staff (piano) shows bass notes. The word "din" is written in the first measure, and "pp" is written in the third measure.

Handwritten musical score for the first system. The top staff is for the flute, and the bottom two staves are for the piano. The flute part begins with a circled 'p' and a slur over the first two measures. The piano part also starts with a circled 'p' and a slur over the first two measures. The key signature has one flat.

Handwritten musical score for the second system. The flute part has a slur over the first two measures and a circled 'f' in the second measure. The piano part has a circled 'f' and a slur over the first two measures. The key signature has one flat.

Handwritten musical score for the third system. The flute part has a slur over the first two measures and a circled 'f' in the first measure. The piano part has a circled 'f' and a slur over the first two measures. The key signature has one flat.

Handwritten musical notation for the first system. The top staff is in treble clef with a key signature of one flat (B-flat) and a common time signature. It contains two measures of music: the first measure has a series of notes with a slur and a 'b' above, and the second measure has another series of notes with a slur and a 'b' above. The piano accompaniment is shown in two staves below, with various chordal and melodic fragments.

Handwritten musical notation for the second system. The top staff is in treble clef with a key signature of one sharp (F#) and a common time signature. It contains three measures of music: the first measure has a series of notes with a slur and a 'b' above, the second measure has another series of notes with a slur and a 'b' above, and the third measure has a series of notes with a slur and a 'b' above. The piano accompaniment is shown in two staves below, with various chordal and melodic fragments.

Handwritten musical notation for the third system. The top staff is in treble clef with a key signature of one sharp (F#) and a common time signature. It contains three measures of music: the first measure has a series of notes with a slur and a 'b' above, the second measure has another series of notes with a slur and a 'b' above, and the third measure has a series of notes with a slur and a 'b' above. The piano accompaniment is shown in two staves below, with various chordal and melodic fragments. The system ends with a double bar line and a circled 'D.C.' marking.

*sempre cresc.*

Handwritten musical score for the first system. The top staff is for the flute, and the bottom two staves are for the piano. The flute line has a long slur over four measures with notes marked with accents and dynamics like 'pp'. The piano accompaniment has a circled 'pp' in the first measure and various chordal textures.

Handwritten musical score for the second system. The top staff is for the flute, and the bottom two staves are for the piano. The flute line has notes with accents and dynamics like 'f'. The piano accompaniment has a 'cresc.' marking and various chordal textures.

Handwritten musical score for the third system. The top staff is for the flute, and the bottom two staves are for the piano. The flute line has a circled 'H' and a melodic line with various accidentals. The piano accompaniment has a circled 'H' and a bass line with various chordal textures.

Handwritten musical score for the first system. It consists of two staves: a treble clef staff and a bass clef staff. The treble staff contains several measures with notes, accidentals (flats and naturals), and dynamic markings including *p*. The bass staff contains notes, accidentals, and dynamic markings including *pp*. There are also some handwritten annotations like *7 7* and *7 7* above the treble staff.

*subito (viel ruhiger)*

Handwritten musical score for the second system. It features two staves. The treble staff has notes and dynamic markings like *pp*. The bass staff has notes and dynamic markings like *ppp*. There are also some handwritten annotations like *bd.* and *+* above the treble staff.

Handwritten musical score for the third system. It features two staves. The treble staff has notes and dynamic markings like *ppp*. The bass staff has notes and dynamic markings like *ppp*. There are also some handwritten annotations like *poco rit* and *D.C.* (Da Capo). On the right side, there are additional handwritten notes: *Zit +*, *al*, and a square symbol.



Flutterzunge

COOA

1962 Wien

Scherba

Quintus