

Musik in 3 Teilen für Flöte + Streichorchester
 ADOLF SCHERBAUM.

Allegro

Fl. I
 Fl. II
 Br.
 Cb

Fl. I
 Fl. II
 Br.
 Cb

Besetzung:

Solo Flöte
 10-12 1 Korb.
 9-10 2"
 8-9 Bratona (im Partitur
 im 2. Adagio
 notiert)
 6-8 Celli
 4-5 Bässe
 Adolp Scherbaum
 Wien 1863
 (wenn möglich
 mit allen
 Wiederholungen!)

F 153 Scherbaum 152



Solo

③

Fl. (p) *Solo* *mf* *sf*

V1 (p) *mf* *sf*

V2 (p) *sf*

CtB (p) *sf* *pizz*

breit alle

④

Fl. (f) *breit alle* *sf* *mf*

V1 (f) *mf* *sf*

V2 (f) *sf*

CtB (f) *sf* *arco*

Handwritten musical score for the first system, featuring four staves: Flöte (Flute), H2 (Horn 2), BR (Trumpet), and C/B (Clarinet/Bassoon). The Flöte staff contains a complex melodic line with many sixteenth notes and slurs. The other three staves (H2, BR, C/B) contain simpler harmonic accompaniment with slurs and dynamic markings. A circled 'ff' (fortissimo) is written in the Flöte staff. A circled 'f' is written in the H2 staff. A circled 'f' is written in the BR staff. A circled 'f' is written in the C/B staff. A circled 'f' is written below the C/B staff.

Handwritten musical score for the second system, featuring four staves: Flöte (Flute), H2 (Horn 2), BR (Trumpet), and C/B (Clarinet/Bassoon). The Flöte staff continues with a complex melodic line. The H2 staff has a circled 'f' and a circled 'f2'. The BR staff has a circled 'f'. The C/B staff has a circled 'f' and a circled 'f2'. A circled '4' is written above the Flöte staff. A circled 'f' is written below the C/B staff. A circled 'f' is written below the C/B staff.

Handwritten musical score for the first system, consisting of three staves: Flute (Fl.), Violin II (V2), and Cello/Bass (Cb). The music is in G major (one sharp) and 3/4 time. The Flute part features a melodic line with slurs and accents. The V2 part provides harmonic support with chords and some melodic fragments. The Cb part has a bass line with a circled '2' in the first measure. A circled '5' is written at the end of the system.

Handwritten musical score for the second system, also in three staves (Fl., V2, Cb). This system includes vocal lines with the lyrics "du", "du", and "du" written under the notes. The Flute part has a circled '1' in the second measure. The V2 part has a circled '2' in the second measure. The Cb part has a circled '1' in the second measure. A circled '6' is written at the end of the system.

Handwritten musical score for the first system, measures 6-9. The score is written for Flute (Fl.), Clarinet in B-flat (ClB), Violin II (V2), and Bassoon (Bn).

- Flute (Fl.):** Treble clef, G-clef. Measures 6-9 contain sixteenth-note runs with slurs and accents. A circled *mf* dynamic marking is present in measure 6.
- Clarinet in B-flat (ClB):** Bass clef, B-flat clef. Measures 6-9 contain eighth-note patterns with slurs and accents. A circled *p* dynamic marking is present in measure 6.
- Violin II (V2):** Treble clef, F-clef. Measures 6-9 contain eighth-note patterns with slurs and accents. A circled *pizz* (pizzicato) marking is present in measure 6.
- Bassoon (Bn):** Bass clef, C-clef. Measures 6-9 contain eighth-note patterns with slurs and accents. A circled *pizz* marking is present in measure 6.

Handwritten musical score for the second system, measures 10-12. The score is written for Flute (Fl.), Clarinet in B-flat (ClB), Violin II (V2), and Bassoon (Bn).

- Flute (Fl.):** Treble clef, G-clef. Measures 10-12 contain sixteenth-note runs with slurs and accents. A circled *f* dynamic marking is present in measure 10. A circled *f* marking is also present in measure 11.
- Clarinet in B-flat (ClB):** Bass clef, B-flat clef. Measures 10-12 contain eighth-note patterns with slurs and accents. A circled *f* dynamic marking is present in measure 10.
- Violin II (V2):** Treble clef, F-clef. Measures 10-12 contain eighth-note patterns with slurs and accents. A circled *f* dynamic marking is present in measure 10.
- Bassoon (Bn):** Bass clef, C-clef. Measures 10-12 contain eighth-note patterns with slurs and accents. A circled *f* dynamic marking is present in measure 10.

Measures 11 and 12 of the lower staves are marked *arco*.

Handwritten musical score for measures 7, 8, and 9. The score consists of three staves. The top staff is in treble clef with a common time signature. The two bottom staves are in bass clef. The notation includes various rhythmic patterns, slurs, and dynamic markings. Measure 8 is circled with a circled '8'. There are also circled numbers 77 and 82 in the first two staves.

Handwritten musical score for measures 9, 10, and 11. The score consists of three staves. The top staff is in treble clef with a common time signature. The two bottom staves are in bass clef. The notation includes various rhythmic patterns, slurs, and dynamic markings. Measure 10 is circled with a circled '10'. There are also circled numbers 82 and 81 in the first two staves.

Handwritten musical score for measures 11 and 12, labeled "Flöte". The score consists of a single staff with a treble clef and a common time signature. The notation includes various rhythmic patterns, slurs, and dynamic markings. Measure 11 is circled with a circled "11". There is also a circled "81" in the first measure.

Breit gr. rit.

Flöte (frei)

Tempo 1.

11

1V

2V

Br

CTB

12

13

12

14

15

12

16

17

18

19

20

21

22

23

24

25

26

27

28

29

30

31

32

33

34

35

36

37

38

39

40

41

42

43

44

45

46

47

48

49

50

51

52

53

54

55

56

57

58

59

60

61

62

63

64

65

66

67

68

69

70

71

72

73

74

75

76

77

78

79

80

81

82

83

84

85

86

87

88

89

90

91

92

93

94

95

96

97

98

99

100

Ⓟ Cresc. ... sempre →

16

Flöte

17

1/2 V

Bn

CtB

Fl.

1/2 V

2V

Bn

CtB

18

Handwritten musical score for the first system, measures 18-21. The score is written for four staves: Flute (Fl), Clarinet in B-flat (ClB), Bassoon (Bn), and Cello/Double Bass (Cb). Measure 18 is circled. The Flute part features a complex, rapid sixteenth-note passage. The Clarinet and Bassoon parts have long, sustained notes with some grace notes. The Cello/Double Bass part has a simple, sustained line.

Handwritten musical score for the second system, measures 19-20. Measure 19 is circled. The Flute part continues with a rapid sixteenth-note passage. The Clarinet and Bassoon parts have long, sustained notes with some grace notes. The Cello/Double Bass part has a simple, sustained line.

Handwritten musical score for the third system, measures 20-21. Measure 20 is circled. The Flute part continues with a rapid sixteenth-note passage. The Clarinet and Bassoon parts have long, sustained notes with some grace notes. The Cello/Double Bass part has a simple, sustained line.

Handwritten musical score for a piece titled "dün". The score is written on four staves. The first staff is in treble clef with a key signature of one flat (B-flat) and a 3/4 time signature. The second staff is in treble clef with a key signature of one flat and a 3/4 time signature. The third staff is in treble clef with a key signature of one flat and a 3/4 time signature. The fourth staff is in bass clef with a key signature of one flat and a 3/4 time signature. The score includes various musical notations such as notes, rests, slurs, and dynamic markings like *p* and *pp*. There are several circled numbers (21, 22, 23) and a circled letter 'p'. The text "gr. git + dün" is written in the third staff. The word "dün" is written at the top left of the first staff.

Sehr ruhig (tempo accel bis - Tempo 1.)

Handwritten musical score for a piece titled "pizz". The score is written on four staves. The first staff is in treble clef with a key signature of one flat and a 3/4 time signature. The second staff is in treble clef with a key signature of one flat and a 3/4 time signature. The third staff is in bass clef with a key signature of one flat and a 3/4 time signature. The fourth staff is in bass clef with a key signature of one flat and a 3/4 time signature. The score includes various musical notations such as notes, rests, slurs, and dynamic markings like *p* and *pp*. There are several circled numbers (21, 22, 23) and a circled letter 'p'. The word "pizz" is written at the top left of the first staff.

Handwritten musical score for the first system, measures 22-23. The score is in treble clef with a key signature of one flat (B-flat). Measure 22 is marked with a circled '22' and the instruction '(frei)'. The dynamic marking 'f' is present. The lyrics 'bueit - aceli..' are written below the staff. The second system shows the vocal line with lyrics 'bueit - aceli..' and 'eres' in the second measure. The third system shows the vocal line with lyrics 'eres' and 'eres' in the second measure. The dynamic marking 'f' is present in all systems.

Handwritten musical score for the second system, measures 24-25. The score is in treble clef with a key signature of one flat (B-flat). Measure 24 is marked with a circled '24'. The dynamic marking 'f' is present. The score ends with a double bar line and repeat dots.

Handwritten musical score for the third system, measures 25-26. The score is in treble clef with a key signature of one flat (B-flat). The tempo marking 'Presto' is written above the staff. Measure 25 is marked with a circled '25'. The dynamic marking 'f' is present. The score ends with a double bar line and repeat dots.

Handwritten musical score for the fourth system, measures 26-27. The score is in treble clef with a key signature of one flat (B-flat). Measure 26 is marked with a circled '26'. The dynamic marking 'f' is present. The score ends with a double bar line and repeat dots.

Handwritten musical score for three staves. The top staff is in treble clef with a key signature of one flat and a common time signature. Above the staff, there are handwritten notes: a circled '6', a circled '2', and a circled '2'. The first staff contains rhythmic markings and some notes. The second staff contains a melodic line with eighth and sixteenth notes. The third staff contains a similar melodic line. The score is divided into two measures by a vertical bar line.

Handwritten musical score for four staves. The first staff is labeled 'Fl.' and is in treble clef. The second staff is labeled '1+2' and is in treble clef. The third and fourth staves are in treble clef. Above the first staff, there is a circled '2'. The score is divided into three measures by vertical bar lines. The first measure contains a complex rhythmic pattern with a circled '8' above it. The second and third measures contain large, stylized bracket-like markings. The fourth staff contains rhythmic markings and notes.

7-8 Minuten

Op. 111...
breit

Handwritten musical score for four staves. The notation includes various notes, rests, and dynamic markings. The first staff has a treble clef and a key signature of one flat. The second staff has a bass clef. The third and fourth staves have treble clefs. There are circled numbers 12 and 22 on the second and fourth staves respectively. The score ends with a double bar line and a fermata-like flourish on the right side.

II.

Rubric (langsam)

Handwritten musical score for the first system, featuring Flute (Fl.), Clarinet 1 & 2 (Kl. 1+2), Bassoon (Fag.), and Contrabass (Cb.). The score is in 4/4 time and includes dynamic markings such as *p* (piano) and *f* (forte). The Flute part begins with a melodic line marked *M* and *du*. The woodwinds provide harmonic support with various articulations and dynamics.

Handwritten musical score for the second system, continuing the woodwind parts. It features a complex melodic line for the Flute with a *b* (basso) marking. The Clarinet 1 & 2 part has a *f* (forte) marking. The Bassoon and Contrabass parts also feature *f* markings. The score includes various articulations, slurs, and dynamic markings.

Handwritten musical score for the first system, measures 12-15. The score is written on four staves. The top staff contains a melodic line with notes and slurs, including a circled '2' above the second measure. The second and third staves contain sustained notes with slurs and a circled 'p' dynamic marking. The bottom staff contains a bass line with notes and a circled 'p' dynamic marking. The word 'Cresc.' is written between the second and third staves. A 'Solo' marking is present above the third staff in the final measure.

Handwritten musical score for the second system, measures 16-19. The score is written on four staves. The top staff contains a melodic line with notes and slurs, including a circled '3' above the second measure. The second and third staves contain sustained notes with slurs and a circled 'f' dynamic marking. The bottom staff contains a bass line with notes and a circled 'f' dynamic marking. The word 'Cresc.' is written between the second and third staves.

breit

Handwritten musical score for the first system, consisting of four staves. The top staff is in treble clef and contains a melodic line with a large slur over the first two measures and a circled '4' at the end. The second staff is in treble clef with a key signature of one sharp (F#) and contains rhythmic markings. The third staff is in treble clef with a key signature of one sharp (F#) and contains rhythmic markings and the word 'alle'. The bottom staff is in bass clef and contains rhythmic markings. There are various performance markings such as 'ff', 'fz', and 'p' throughout the system.

Handwritten musical score for the second system, consisting of four staves. The top staff is in treble clef and contains a melodic line with a circled '5' at the end. The second staff is in treble clef with a key signature of one sharp (F#) and contains rhythmic markings. The third staff is in bass clef and contains rhythmic markings. The bottom staff is in bass clef and contains rhythmic markings. There are various performance markings such as 'ff', 'fz', and 'p' throughout the system.

5 *subit. p* 6

Fl.
V1
V2

7 8

Fl.
V1
Vc/Cl

alle
alle
alle

Handwritten musical score for strings, measures 8 and 9. The score is written on four staves. Measure 8 is marked with a circled '8' and the word 'pesante' above it. Measure 9 is marked with a circled '9'. The notation includes various dynamics such as *pp* and *f*, and includes some handwritten annotations like '777' and '22'.

Handwritten musical score for Violin Solo, measures 10 and 11. The score is written on three staves. Measure 10 is marked with a circled '10' and the text 'Viol. Solo' above it. Measure 11 is marked with a circled '11' and the text 'rit + din' below it. The notation includes a dynamic marking of *f* and a 'sul G' marking.

Handwritten musical score for Violin Solo, measure 12. The score is written on two staves. Measure 12 is marked with a circled '12' and the text 'Solo (Violine)' above it. The notation includes a dynamic marking of *pp* and the text 'D.C.' at the end of the measure.

Handwritten musical score for three staves: Flute (Fl.), Horn (Hr.), and Cello/Double Bass (Cb/B).

Flute (Fl.): Treble clef, 4/4 time signature. The notation includes a melodic line with various accidentals (sharps, naturals, flats) and dynamics. A circled 'p' is present. The word "frei" is written above the staff. A circled 'p' is also present below the staff.

Horn (Hr.): Bass clef. The notation shows a sustained chord with a sharp sign. A circled 'pp' is written below the staff.

Cello/Double Bass (Cb/B): Bass clef. The notation shows a sustained chord with a sharp sign. A circled 'pp' is written below the staff.

Vertical text on the right side of the staves reads "Fl.", "Hr.", and "Cb/B".

III.

Presto

Flöte Solo

2/4

74

1

2

3

4

Handwritten musical score for strings and woodwinds. The score is written on four staves: 1V (Violin I), 2V (Violin II), BA (Viola), and CHB (Cello/Double Bass). The music is in 2/4 time and features complex rhythmic patterns, including sixteenth and thirty-second notes, and various articulations like accents and slurs. The score is divided into four measures, with measure numbers 74, 75, 76, and 77 indicated. A circled '4' is present in the top right corner of the score area.

(4)

Handwritten musical score for system 4, measures 4-8. The score is written for four staves: Violin I (V1), Violin II (V2), Viola (V), and Cello/Double Bass (C/B). The music is in 2/4 time and includes various rhythmic patterns, accidentals, and slurs. A circled '5' is at the end of the system.

(5)

Handwritten musical score for system 5, measures 9-13. The score is written for four staves: Violin I (V1), Violin II (V2), Viola (V), and Cello/Double Bass (C/B). The music is in 2/4 time and includes various rhythmic patterns, accidentals, and slurs. A circled '6' is at the end of the system.

Solo

Fl. H

1+2

Brs

ClB a2

Fl.

1+2

Brs

ClB

Solo Flöte

Fl.

1+2

Brs

ClB

Handwritten musical score for measures 7-9. The score consists of four staves. The first two staves are labeled '1V' and '2V'. The third staff has a circled '22' and the fourth staff has '7+2' and 'CtB' written above it. A circled '9' is at the end of the system. The music features complex rhythmic patterns with many beamed notes and slurs.

Handwritten musical score for measures 10-11. The score consists of four staves. A circled '10' is at the end of the system. The music continues with complex rhythmic patterns and slurs.

Flöte Solo

ff

(p)

11

frei

(p) < Crescendo

mf <

(f)

Steigern - ins Tempo gehen

ff >

12

25

D.e. 13

Handwritten musical score for measures 13-17. The score is for Flute (Fl.), Violin I (V), Violin II (zV), Bassoon (Bn), and Clarinet in B-flat (ClB). The Flute part has a melodic line with slurs and accents. The strings play chords with slurs. The Clarinet part has a simple bass line with circled '2' markings.

Handwritten musical score for measures 18-22. The score is for Flute (Fl.), Violin I (V), Violin II (zV), Bassoon (Bn), and Clarinet in B-flat (ClB). The Flute part continues with a melodic line. The strings play chords. The Bassoon and Clarinet parts have rests and some notes. There are handwritten annotations 'steigern' and 'noch' with arrows pointing to the right.

Handwritten musical score for measures 14-15. The score is written on four staves: 1V (Violin I), 2V (Violin II), Cb (Cello), and Kb (Double Bass). Measure 14 is circled in the top left, and measure 15 is circled in the top right. The notation includes various rhythmic values, slurs, and dynamic markings.

Handwritten musical score for measures 16-17. The score is written on four staves: 1V (Violin I), 2V (Violin II), Cb (Cello), and Kb (Double Bass). Measure 16 is circled in the top right. The notation includes various rhythmic values, slurs, and dynamic markings.

Handwritten musical score for measures 17-18. The score is written on four staves: 1V (Violin I), 2V (Violin II), Cb (Cello), and Kb (Double Bass). Measure 17 is circled in the top right, and measure 18 is circled in the bottom left. The notation includes various rhythmic values, slurs, and dynamic markings.

Flöte Solo

Handwritten musical notation for Flute Solo, measures 17 and 18. Measure 17 is circled with the number 17. Measure 18 is circled with the number 18. The notation includes various notes, rests, and slurs.

Handwritten musical notation, measure 19. Measure 19 is circled with the number 19. The notation includes notes, rests, and slurs.

Handwritten musical notation for measures 20 and 21. Measure 20 is circled with the number 20. Measure 21 is circled with the number 21. The notation includes notes, rests, and slurs.

Handwritten musical notation for measures 22 and 23. Measure 22 is circled with the number 22. Measure 23 is circled with the number 23. The notation includes notes, rests, and slurs. A double-headed arrow labeled "UNIS" is present between the staves.

1.

Flöte

Solo Flöte

Handwritten musical notation for Solo Flöte, measures 25-26. The notation includes various notes, rests, and dynamic markings like 'ff'. Measure 25 shows a series of notes with slurs and accents. Measure 26 shows a series of notes with slurs and accents, ending with a double bar line.

25

Solo

1V

2V

Br

CHB

ff (hant) alle

Handwritten musical notation for strings (1V, 2V, Br, CHB), measures 25-26. The notation includes various notes, rests, and dynamic markings like 'ff'. Measure 25 shows a series of notes with slurs and accents. Measure 26 shows a series of notes with slurs and accents, ending with a double bar line.

26

1+2

V

Br

CHB

dim p

27

Handwritten musical notation for strings (1+2, V, Br, CHB), measures 27-30. The notation includes various notes, rests, and dynamic markings like 'p' and 'dim'. Measure 27 shows a series of notes with slurs and accents. Measure 28 shows a series of notes with slurs and accents. Measure 29 shows a series of notes with slurs and accents. Measure 30 shows a series of notes with slurs and accents, ending with a double bar line.

30

27 Solo *sempre cresc. →*

28 *Cresc.*

Solo Viol. ①
Solo Viol. ②
Bn. Solo
Cello Solo

30

30 Flöte

1v. *alle*

2v. *alle*

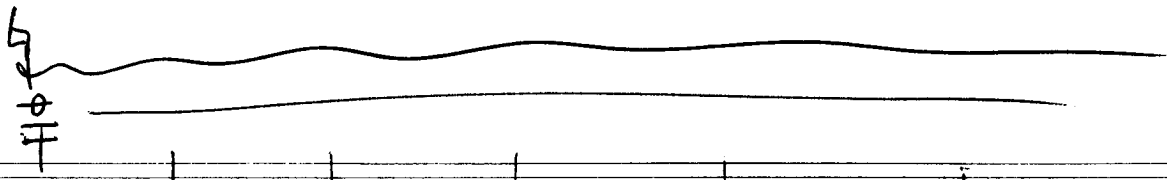
3v. *alle*

OB *alle* (a2)

32

Solo Flöte

33



Handwritten musical score for five staves. The first staff contains the instruction: *(Prestissimo) So rasch + stark als möglich*. The notation includes various rhythmic values and accidentals across five measures.

Handwritten musical score for four staves. The notation is heavily scribbled over with large, expressive lines. The name *Scherbaum* is written in large cursive across the staves. There are also some smaller markings and symbols.