

Notenheft



Musik in 3 Teilen
für
Solo Oboe
und
Streichorchester
1963

(ad libitum)
mit

Allegro

I.

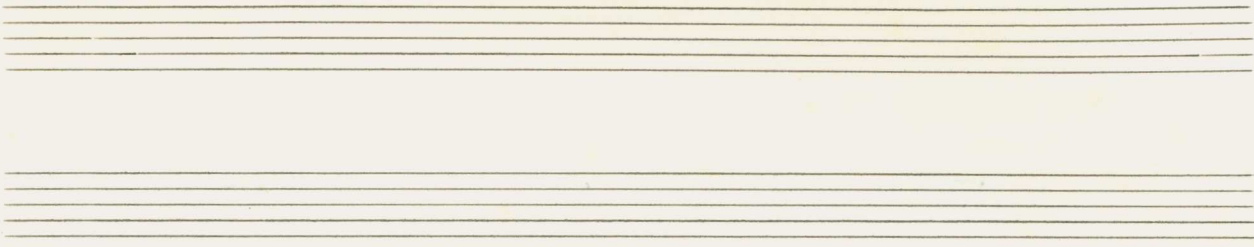
Handwritten musical notation for the first system. It features a treble clef and a 4/4 time signature with a circled 'f' (forte). The notation includes a melodic line with eighth and sixteenth notes, some with accents, and a bass line with rhythmic notation consisting of quarter and eighth notes.

Handwritten musical notation for the second system, continuing the melodic and rhythmic patterns from the first system. It includes a treble clef and a bass line with rhythmic notation.

1

Handwritten musical notation for the first system. The top staff is a treble clef staff with notes and rests. The bottom staff is a bass clef staff with rhythmic markings, including a double bar line and a series of vertical lines with upward-pointing arrows. A circled number '1' is in the top right corner.

Handwritten musical notation for the second system. The top staff is a treble clef staff with notes and rests. The bottom staff is a bass clef staff with rhythmic markings, including a double bar line and a series of vertical lines with upward-pointing arrows.



Handwritten musical score for three staves. The top staff is in treble clef with notes and accidentals. The middle staff is in bass clef with notes and accidentals. The bottom staff is in bass clef with notes and accidentals. The music is divided into three measures by vertical bar lines.

Solo

Handwritten musical score for three staves. The top staff is in treble clef with notes and accidentals. The middle staff is in bass clef with notes and accidentals. The bottom staff is in bass clef with notes and accidentals. The music is divided into three measures by vertical bar lines. A circled 'f' is in the first measure of the top staff, and a circled '2' is at the end of the top staff.



Handwritten musical score for the first system. It consists of a treble clef staff and a grand staff (violin and cello). The notation includes various notes, rests, and dynamic markings.

Handwritten musical score for the second system. It consists of a treble clef staff and a grand staff. A circled '3' is written in the right margin. The notation includes notes, rests, and dynamic markings.

Handwritten musical score for the third system. It consists of a treble clef staff and a grand staff. The word "Solo" is written above the treble staff. The notation includes notes, rests, and dynamic markings.

Handwritten musical score system 1. It consists of three staves. The top staff is a single treble clef staff with a melodic line. The middle and bottom staves are grouped by a brace on the left and represent a piano accompaniment. The key signature has two sharps (F# and C#). The system contains four measures of music.

Handwritten musical score system 2. It consists of three staves. The top staff is a single treble clef staff with a melodic line. The middle and bottom staves are grouped by a brace on the left and represent a piano accompaniment. The key signature has two sharps (F# and C#). The system contains four measures of music. A circled number '4' is written to the right of the system, with a vertical line pointing to the end of the system.

Handwritten musical score system 3. It consists of three staves. The top staff is a single treble clef staff with a melodic line. The middle and bottom staves are grouped by a brace on the left and represent a piano accompaniment. The key signature has two sharps (F# and C#). The system contains four measures of music.

Handwritten musical score for the first system. The top staff is in treble clef and contains a melodic line with various ornaments and a fermata. The bottom two staves are in grand staff (treble and bass clefs) and contain piano accompaniment with chords and rhythmic patterns. A circled number '5' is located at the end of the system.

Handwritten musical score for the second system. The top staff is in treble clef and contains a melodic line with ornaments and a fermata. The bottom two staves are in grand staff and contain piano accompaniment with chords and rhythmic patterns. A circled number '4' is located at the beginning of the system.

Handwritten musical score for the third system. The top staff is in treble clef and contains a melodic line with ornaments and a fermata. The bottom two staves are in grand staff and contain piano accompaniment with chords and rhythmic patterns.

Solo

(p) ← cresc...

6

Solo

(p) ← cresc.

7

7

f

Handwritten musical score for the first system. The top staff is in treble clef and contains a melodic line with notes and rests. The bottom staff is in bass clef and contains accompaniment with notes and rests. The key signature has two sharps (F# and C#). There are circled symbols in the left margin: a treble clef and a sharp sign.

Handwritten musical score for the second system. The top staff is in treble clef and contains a melodic line. The bottom staff is in bass clef and contains accompaniment. The key signature has two sharps (F# and C#). There are circled symbols in the left margin: a treble clef and a sharp sign.

Handwritten musical score for the third system. The top staff is in treble clef and contains a melodic line, with the word "Solo" written above it. The bottom staff is in bass clef and contains accompaniment. The key signature has two sharps (F# and C#). There are circled symbols in the left margin: a treble clef and a sharp sign. A circled symbol is also present at the end of the system.

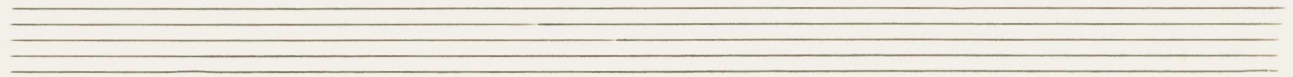
8

Handwritten musical score for measures 8-9. The top staff shows a melodic line with a slur and a fermata. The bottom staff shows a piano accompaniment with a circled 'H' and two vertical sequences of notes.

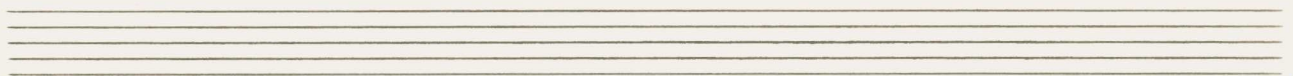
9

Handwritten musical score for measures 9-10. The top staff shows a melodic line with a slur and a fermata. The bottom staff shows a piano accompaniment with the instruction "Solo feise" and "alle Calli".

Handwritten musical score for measures 10-11. The top staff shows a melodic line with a slur and a fermata. The bottom staff shows a piano accompaniment with the instruction "alle".



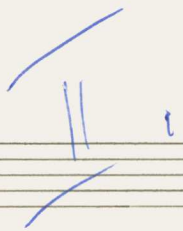
Handwritten musical notation for the first system. It consists of three staves: a treble clef staff with a whole rest, a grand staff (violin and viola) with a melodic line, and a bass clef staff with a rhythmic pattern of notes marked with accents (>). The notes in the bass staff are: 0, 1, 0, 0, 0, 1, 0.



Handwritten musical notation for the second system. It consists of three staves. The top staff has a whole rest. The middle staff has a melodic line with a slur. The bottom staff has a rhythmic pattern of notes. A circled 'R' is written at the end of the system.

Handwritten musical notation for the third system. It consists of three staves. The top staff has a melodic line with a slur and a circled '11'. The middle staff has a complex melodic line with slurs and a circled '11'. The bottom staff has a complex melodic line with slurs and a circled '11'. The word 'Kadenz' is written above the top staff. The word 'FIN.' is written at the end of the system.

Johannes (rit)



Handwritten musical score for the first system. The top staff is for the solo oboe, and the bottom two staves are for the string orchestra. The music is in 4/4 time and includes various rhythmic patterns and dynamics.

Handwritten musical score for the second system. It features a circled '3' above the oboe staff and a circled 'ff' (fortissimo) marking. The notation includes complex rhythmic figures and dynamic markings.

Handwritten musical score for the third system. It features a circled '4' at the end of the system. The notation includes a long melodic line in the oboe part and corresponding accompaniment in the strings.

4

Handwritten musical score for measures 4-6. The top staff is for the Oboe, and the bottom two staves are for the string ensemble. Measure 4 shows a rest for the Oboe and a piano (*p*) dynamic marking. Measures 5 and 6 feature melodic lines in the Oboe and harmonic accompaniment in the strings.

5

Handwritten musical score for measures 7-9. The Oboe part continues with a melodic line, and the strings provide accompaniment. A circled '5' is at the end of the system.

6

Handwritten musical score for measures 10-12. The Oboe part features a forte (*f*) dynamic marking and a melodic line with a slur. The strings continue with accompaniment. A circled '6' is at the end of the system.

Handwritten musical score for measures 1-3. The top staff is empty. The middle staff contains a melodic line with notes and slurs. The bottom staff contains a bass line with notes and slurs. A circled 'f' is written to the left of the first measure.

Handwritten musical score for measures 4-6. The top staff is empty. The middle staff contains a melodic line with notes and slurs. The bottom staff contains a bass line with notes and slurs. A circled 'f' is written to the left of the first measure.

Handwritten musical score for measures 7-8. The top staff is empty. The middle staff contains a melodic line with notes and slurs. The bottom staff contains a bass line with notes and slurs. A circled '7' is written above the first measure and a circled '8' is written above the second measure.

8

Allegro III

1

Handwritten musical score for the first system, measures 1-4. It features a treble clef staff with a key signature of one flat and a common time signature. The bass clef staff contains chords with circled 'F' and 'C' symbols. The music consists of quarter notes and eighth notes in the treble and chords in the bass.

2

Handwritten musical score for the second system, measures 5-8. The treble clef staff shows a melodic line with slurs and ties. The bass clef staff contains chords with flats and a circled 'F' symbol. The music includes quarter notes, eighth notes, and a final measure with a fermata.

Handwritten musical score for the third system, measures 9-12. The treble clef staff features a series of eighth notes with slurs. The bass clef staff contains chords with flats and a circled 'F' symbol. The music concludes with a double bar line and a fermata.

3

Handwritten musical score for measures 1-3. The top staff is empty. The middle staff has a treble clef and contains a sequence of eighth notes with a slur and a fermata. The bottom staff has a bass clef and contains a sequence of notes with a slur and a fermata. The music is in 3/4 time.

Solo

Handwritten musical score for measures 4-7. The top staff has a treble clef and contains a sequence of notes with a slur and a fermata. The middle staff has a treble clef and contains a sequence of notes with a slur and a fermata. The bottom staff has a bass clef and contains a sequence of notes with a slur and a fermata. The music is in 3/4 time.

cresc...

4

Handwritten musical score for measures 8-11. The top staff has a treble clef and contains a sequence of notes with a slur and a fermata. The middle staff has a treble clef and contains a sequence of notes with a slur and a fermata. The bottom staff has a bass clef and contains a sequence of notes with a slur and a fermata. The music is in 3/4 time.

4

Handwritten musical score for measures 4-6. The score is written on three staves. The top staff is for a woodwind instrument (likely Oboe) in G major, with a circled '4' and a circled 'F#'. The middle staff is for a string instrument (likely Violin) in G major, with a circled 'F#'. The bottom staff is for a string instrument (likely Viola) in G major, with a circled 'F#'. The music consists of three measures. The first measure shows a woodwind entry with a circled 'F#' and a circled '4'. The second and third measures show a woodwind entry with a circled 'F#' and a circled '4'. The string parts provide harmonic support with chords and moving lines.

5

Handwritten musical score for measures 7-9. The score is written on three staves. The top staff is for a woodwind instrument (likely Oboe) in G major, with a circled '5'. The middle staff is for a string instrument (likely Violin) in G major, with a circled 'F#'. The bottom staff is for a string instrument (likely Viola) in G major, with a circled 'F#'. The music consists of three measures. The first measure shows a woodwind entry with a circled '5'. The second and third measures show a woodwind entry with a circled '5'. The string parts provide harmonic support with chords and moving lines.

Solo

p = *cresc.*

cresc.

f *f* *f* 6

7

8

9

9

Solo

p

p

p cresc. ~ ~

Handwritten musical score for measures 10-11. The system includes a treble clef staff with a circled measure number '10' at the end, and a grand staff (treble and bass clefs). The music features a melodic line in the treble clef with a long slur over four measures, and a piano accompaniment in the grand staff. The piano part includes chords and moving lines, with dynamic markings like 'f' and 'ff'. A circled measure number '11' is at the end of the system.

Handwritten musical score for measures 12-13. The system includes a treble clef staff with a circled measure number '12' at the end, and a grand staff. The music features a melodic line in the treble clef with a circled measure number '12' at the end, and a piano accompaniment in the grand staff. The piano part includes chords and moving lines, with dynamic markings like 'f' and 'ff'. A circled measure number '13' is at the end of the system.

Handwritten musical score for measures 14-15. The system includes a treble clef staff with a circled measure number '14' at the end, and a grand staff. The music features a melodic line in the treble clef with a circled measure number '14' at the end, and a piano accompaniment in the grand staff. The piano part includes chords and moving lines, with dynamic markings like 'f' and 'ff'. A circled measure number '15' is at the end of the system.

Solo

p *cres.*

13

Cresc... →

14

f *f* **24**

Handwritten musical score for measures 74-76. The score is written in blue ink on a five-line staff system. The top staff is in treble clef with a 2/2 time signature. The bottom two staves are in bass clef, with a brace on the left. Measure 74 (circled) shows a melodic line in the treble clef and a bass line in the bass clef. Measure 75 shows a continuation of the melodic line and bass line. Measure 76 shows the final notes of the phrase. The key signature has three sharps (F#, C#, G#).

Handwritten musical score for measures 77-79. The score is written in blue ink on a five-line staff system. The top staff is in treble clef. The bottom two staves are in bass clef, with a brace on the left. Measure 77 (circled) shows a melodic line in the treble clef and a bass line in the bass clef. Measure 78 shows a continuation of the melodic line and bass line. Measure 79 shows the final notes of the phrase. The key signature has three sharps (F#, C#, G#).

Handwritten musical score for the first system. It consists of three staves: a treble clef staff at the top, a piano staff in the middle, and a bass clef staff at the bottom. The treble staff contains several measures of music with notes and accidentals, including a 2/2 time signature. The piano staff shows chords and melodic lines. The bass staff contains a few notes and rests.

Handwritten musical score for the second system. It features three staves: treble, piano, and bass. The treble staff has notes with slurs and accents. The piano staff shows dense chordal textures and melodic lines. The bass staff has notes with slurs and accents, including a dynamic marking 'p'.

Handwritten musical score for the third system. It features three staves: treble, piano, and bass. The treble staff has notes with slurs and accents, and a circled measure number '16' at the end. The piano staff shows dense chordal textures and melodic lines. The bass staff has notes with slurs and accents, including a dynamic marking 'p'.

Handwritten musical score for three staves. The top staff contains a treble clef, a key signature of one sharp (F#), and a 6/8 time signature. The middle staff contains a treble clef and a key signature of one sharp. The bottom staff contains a bass clef and a key signature of one sharp. The music consists of three measures, each with a long horizontal line above it. The middle staff features sixteenth-note runs in each measure. The bottom staff features a simple harmonic line. A circled number '167' is written in the top right corner.

Handwritten musical score for three staves. The top staff contains a treble clef and a key signature of one sharp. The middle staff contains a treble clef and a key signature of one sharp. The bottom staff contains a bass clef and a key signature of one sharp. The music consists of two measures, each with a long horizontal line above it. The middle staff features sixteenth-note runs in the first measure and chords in the second. The bottom staff features sixteenth-note runs in the first measure and chords in the second. A circled number '77' is written in the top right corner.

hier
 oder Libretto
 Kadenz

18

Tempo

FIN.

10/63
hing A.S.