

Sonate für
Klavier
1964

Notenheft

Adolf Schenker

Sonate für

Klavier

1964

Adolf Scherbaum

I.

Adagio

Handwritten musical notation for the first system, showing a grand staff with treble and bass clefs and a 4/4 time signature. The notation is mostly blank, with some faint markings in the first measure.

Empty musical staff.

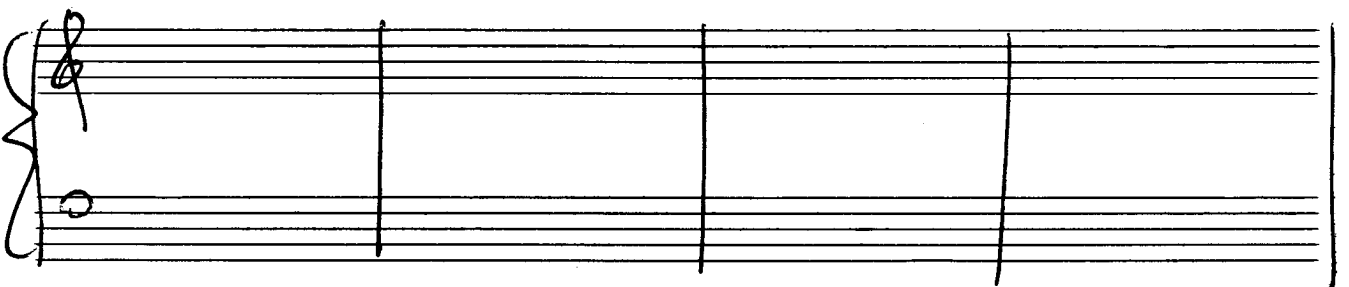
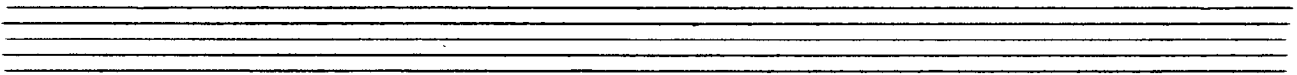
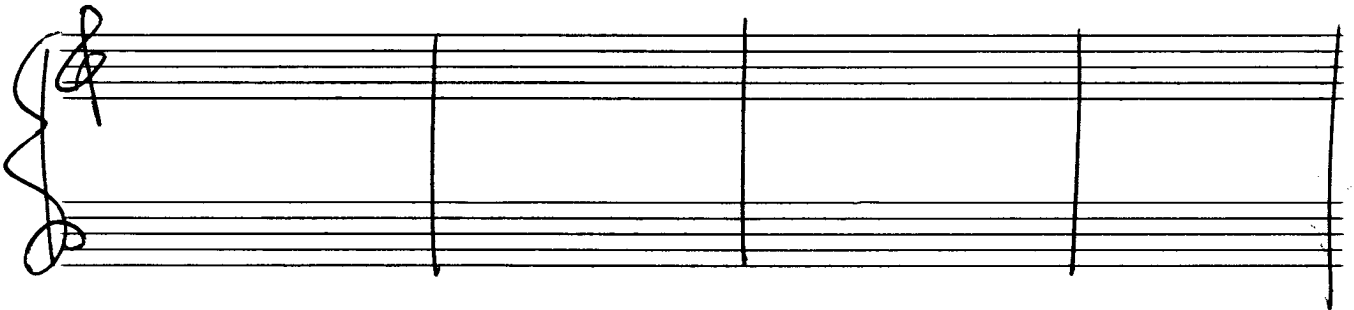
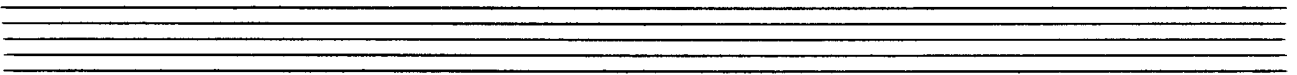
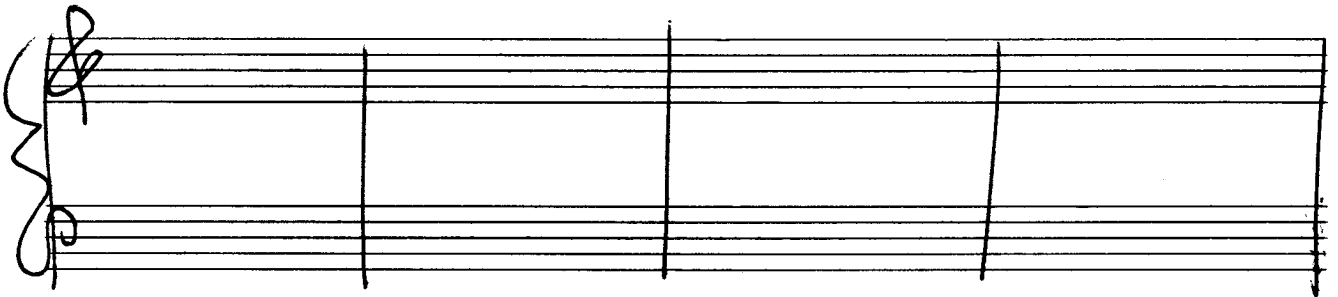
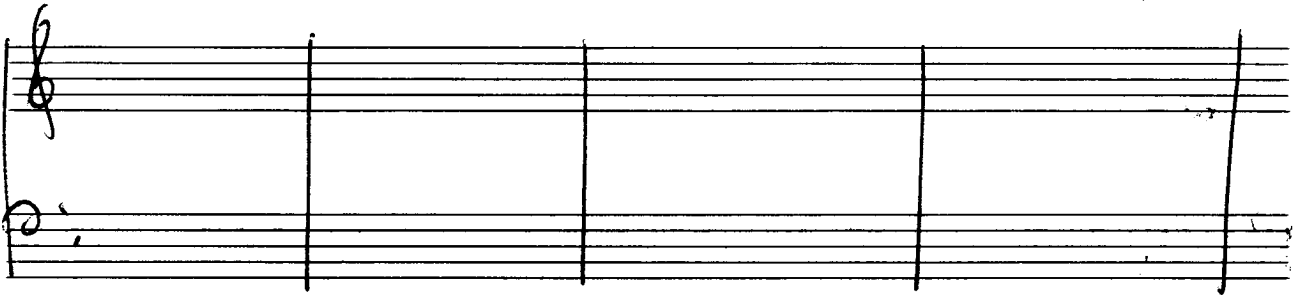
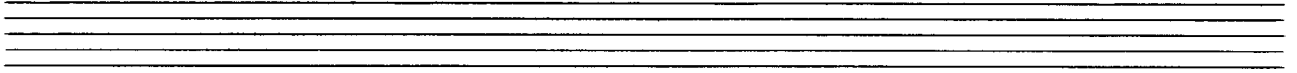
Handwritten musical notation for the second system, showing a grand staff with treble and bass clefs. The notation is mostly blank, with some faint markings in the first measure.

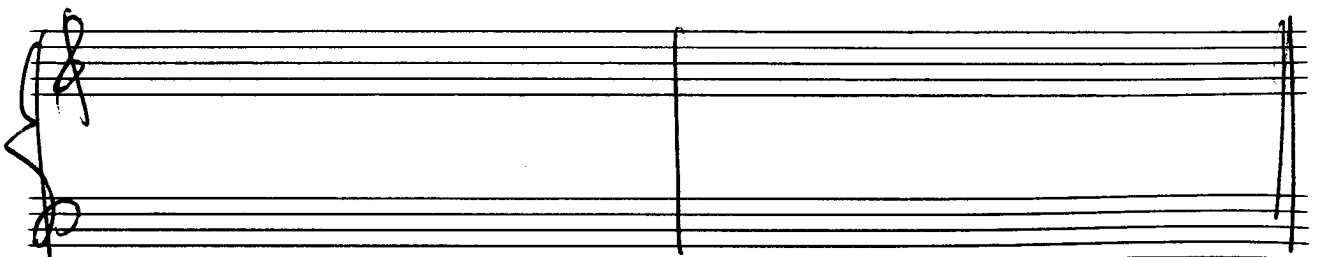
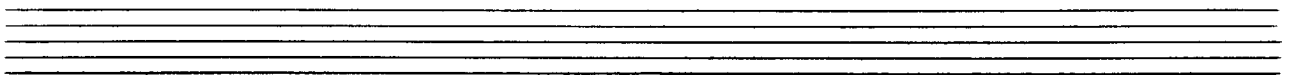
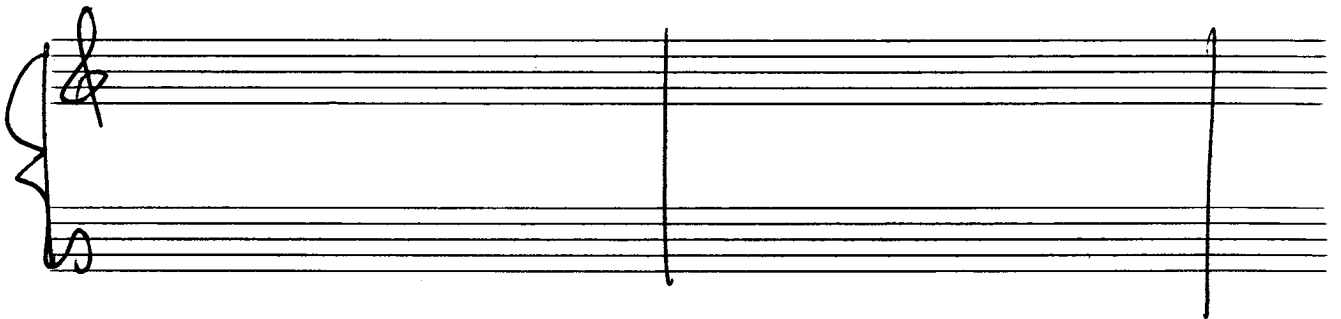
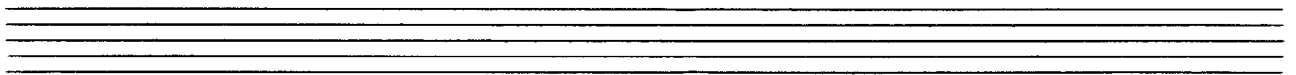
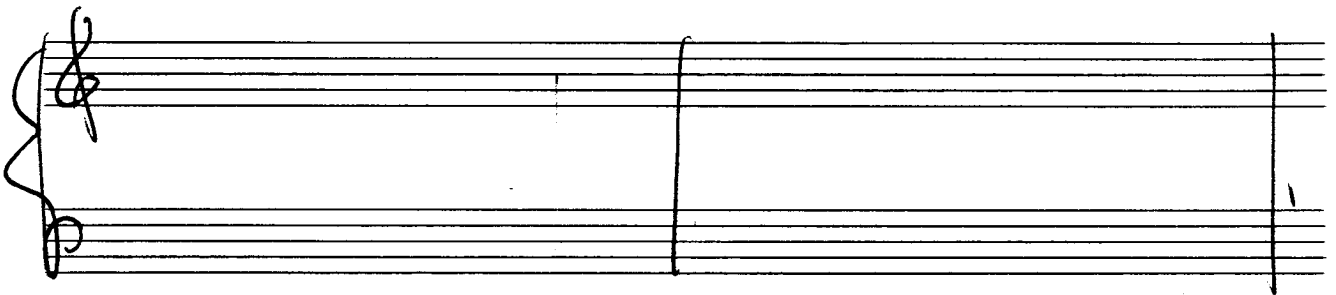
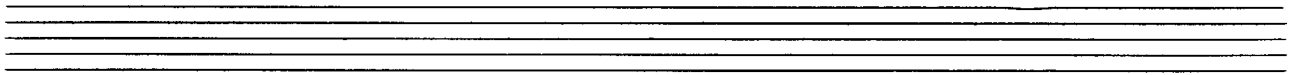
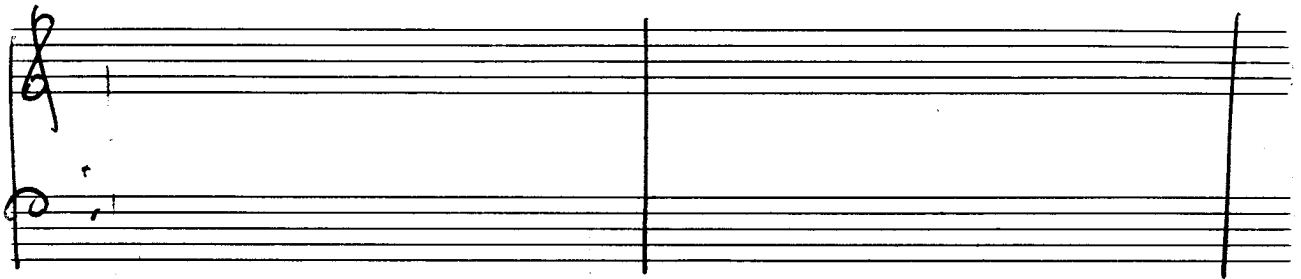
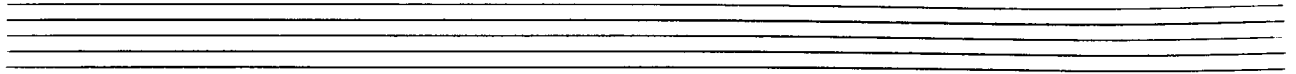
Empty musical staff.

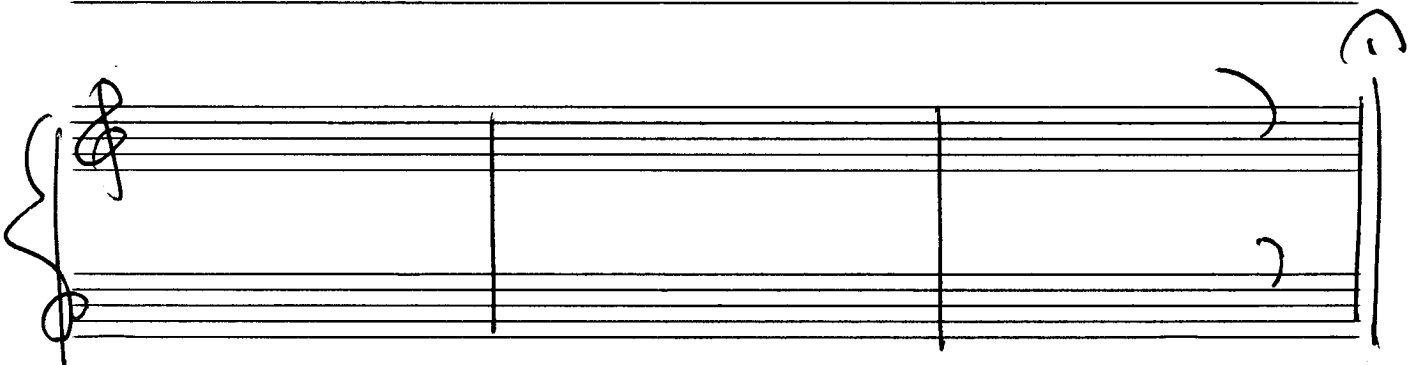
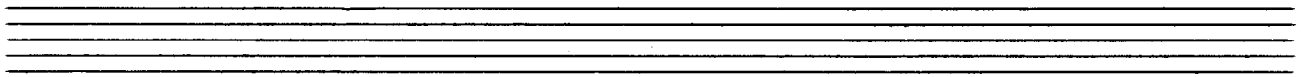
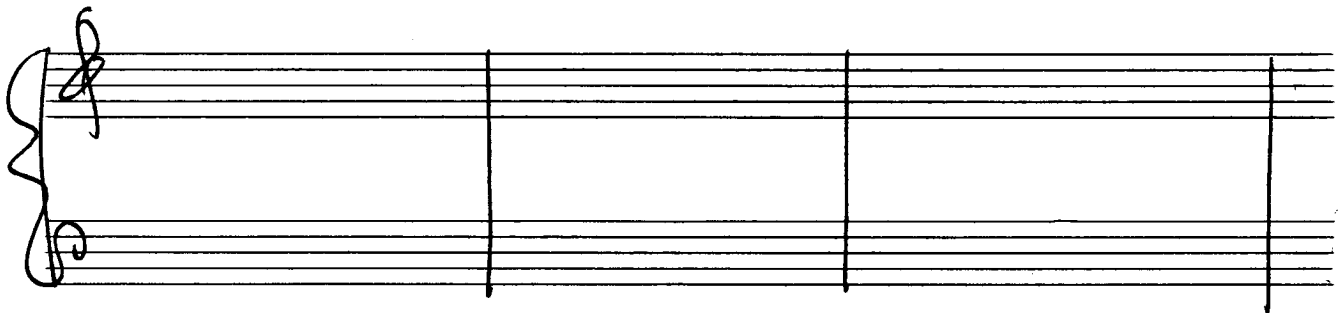
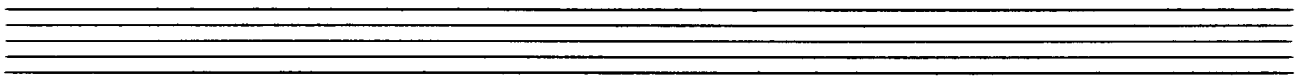
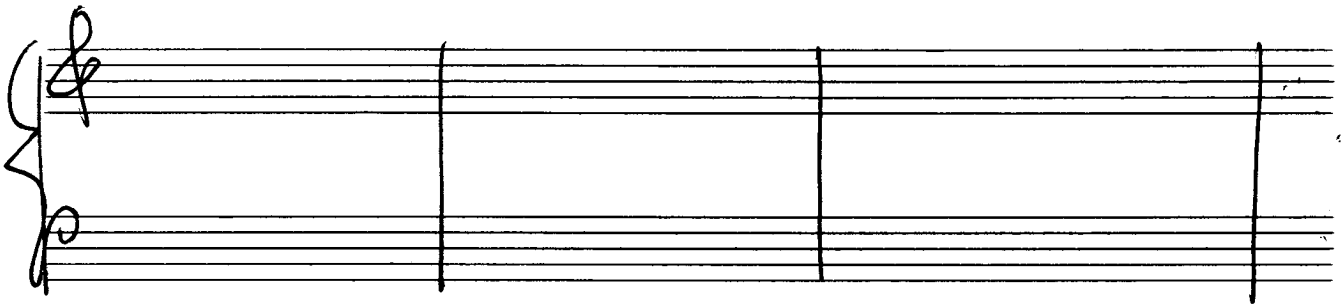
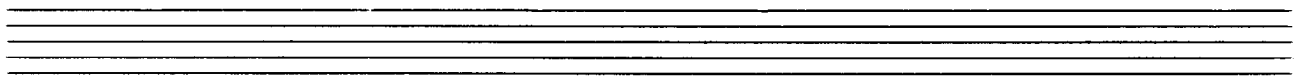
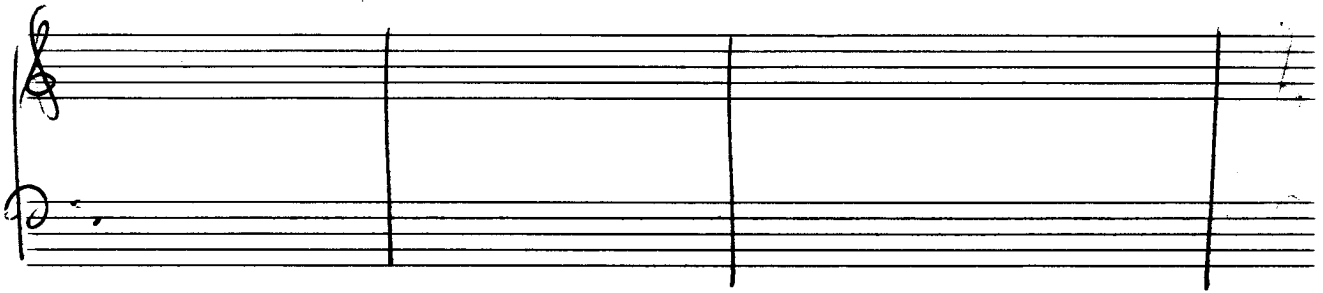
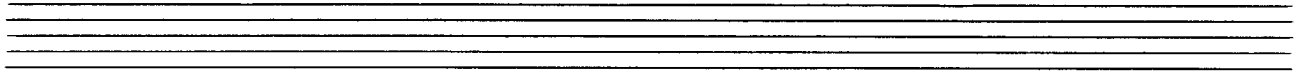
Handwritten musical notation for the third system, showing a grand staff with treble and bass clefs. The notation is mostly blank, with some faint markings in the first measure.

Empty musical staff.

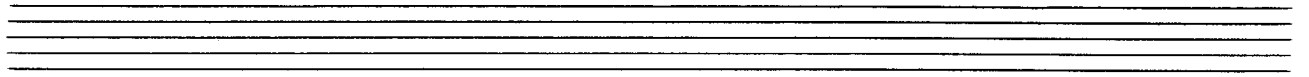
Empty musical staff.



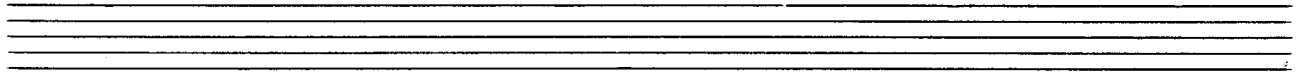




Allegro moderato



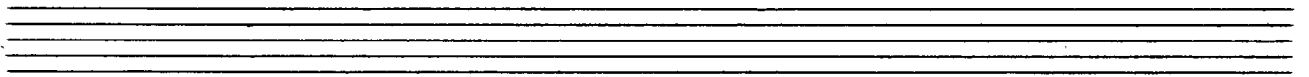
Handwritten musical notation for the first system. The right hand (treble clef) has notes with accidentals: $b^{\flat}a$, $b^{\flat}g$, $b^{\flat}g$, $b^{\flat}d$, a . The left hand (bass clef) has notes with accidentals: $\#g$, $\#g$, $b^{\flat}g$, $b^{\flat}f$, $b^{\flat}g$, $b^{\flat}g$, $b^{\flat}g$, $b^{\flat}g$, $b^{\flat}g$, $b^{\flat}g$. A circled (p) is written above the first measure of the left hand. A \vee symbol is above the first measure of the right hand.



Handwritten musical notation for the second system. The right hand (treble clef) has notes with accidentals: $\#g$, $\#g$, d , $b^{\flat}g$, $\#g$, a . The left hand (bass clef) has notes with accidentals: $b^{\flat}g$, $b^{\flat}g$, $b^{\flat}g$, $b^{\flat}g$, $b^{\flat}g$, $b^{\flat}g$, $\#g$, $\#g$, $b^{\flat}g$. A \vee symbol is above the first measure of the right hand.



Handwritten musical notation for the third system. The right hand (treble clef) has notes with accidentals: a , $\#g$, a , a , a , $b^{\flat}g$. The left hand (bass clef) has notes with accidentals: $\#g$, $\#g$, $\#g$, $\#g$, $\#g$, $\#g$, $b^{\flat}g$, $b^{\flat}g$, $b^{\flat}g$. A circled (f) is written above the first measure of the right hand. A \vee symbol is above the first measure of the left hand.



Handwritten musical notation for the fourth system. The right hand (treble clef) has notes with accidentals: $b^{\flat}a$, a , a , $b^{\flat}g$. The left hand (bass clef) has notes with accidentals: $b^{\flat}g$, $b^{\flat}g$, $b^{\flat}g$, $b^{\flat}g$, $b^{\flat}g$, $b^{\flat}g$, $\#g$, $\#g$, $b^{\flat}g$. A circled (f) is written above the first measure of the right hand. A \vee symbol is above the first measure of the left hand.

Handwritten musical notation for the first system. The system consists of two staves. The treble staff has a key signature of one sharp (F#) and contains a melodic line with a slur over the first four measures and an accent (^) over the first note. The bass staff contains a bass line with a slur over the first two measures and an accent (^) over the first note. The notation includes various accidentals and rhythmic markings.

Handwritten musical notation for the second system. The system consists of two staves. The treble staff has a key signature of one sharp (F#) and contains a melodic line with a slur over the first four measures and an accent (^) over the first note. The bass staff contains a bass line with a slur over the first two measures and an accent (^) over the first note. The notation includes various accidentals and rhythmic markings.

Handwritten musical notation for the third system. The system consists of two staves. The treble staff has a key signature of one sharp (F#) and contains a melodic line with a slur over the first two measures and an accent (^) over the first note. The bass staff contains a bass line with a slur over the first two measures and an accent (^) over the first note. The notation includes various accidentals and rhythmic markings.

langsam

Handwritten musical notation for the first system, measures 1-2. The top staff is in treble clef and the bottom in bass clef. The key signature has one sharp (F#) and the time signature is 4/4. The first measure contains a half note G4 with a slur over it, and a half note F#4. The second measure contains a half note G4 with a slur over it, and a half note F#4. The bottom staff contains a half note G4 with a slur over it, and a half note F#4. The dynamic marking 'pp' is written in the first measure.

Handwritten musical notation for the second system, measures 3-4. The top staff is in treble clef and the bottom in bass clef. The key signature has one flat (Bb) and the time signature is 4/4. The first measure contains a half note Bb3 with a slur over it, and a half note Bb3. The second measure contains a half note Bb3 with a slur over it, and a half note Bb3. The bottom staff contains a half note Bb3 with a slur over it, and a half note Bb3.

Handwritten musical notation for the third system, measures 5-6. The top staff is in treble clef and the bottom in bass clef. The key signature has one flat (Bb) and the time signature is 4/4. The first measure contains a half note Bb3 with a slur over it, and a half note Bb3. The second measure contains a half note Bb3 with a slur over it, and a half note Bb3. The bottom staff contains a half note Bb3 with a slur over it, and a half note Bb3. A circled 'p' is written in the first measure.

Handwritten musical notation for the fourth system, measures 7-8. The top staff is in treble clef and the bottom in bass clef. The key signature has one sharp (F#) and the time signature is 4/4. The first measure contains a half note F#4 with a slur over it, and a half note F#4. The second measure contains a half note F#4 with a slur over it, and a half note F#4. The bottom staff contains a half note F#4 with a slur over it, and a half note F#4.

rit - dur -

Handwritten musical notation for the first system, featuring a treble and bass clef with a melodic line and accompaniment. The notation includes various accidentals and dynamic markings like 'pp'.

attaca Tempo 1.

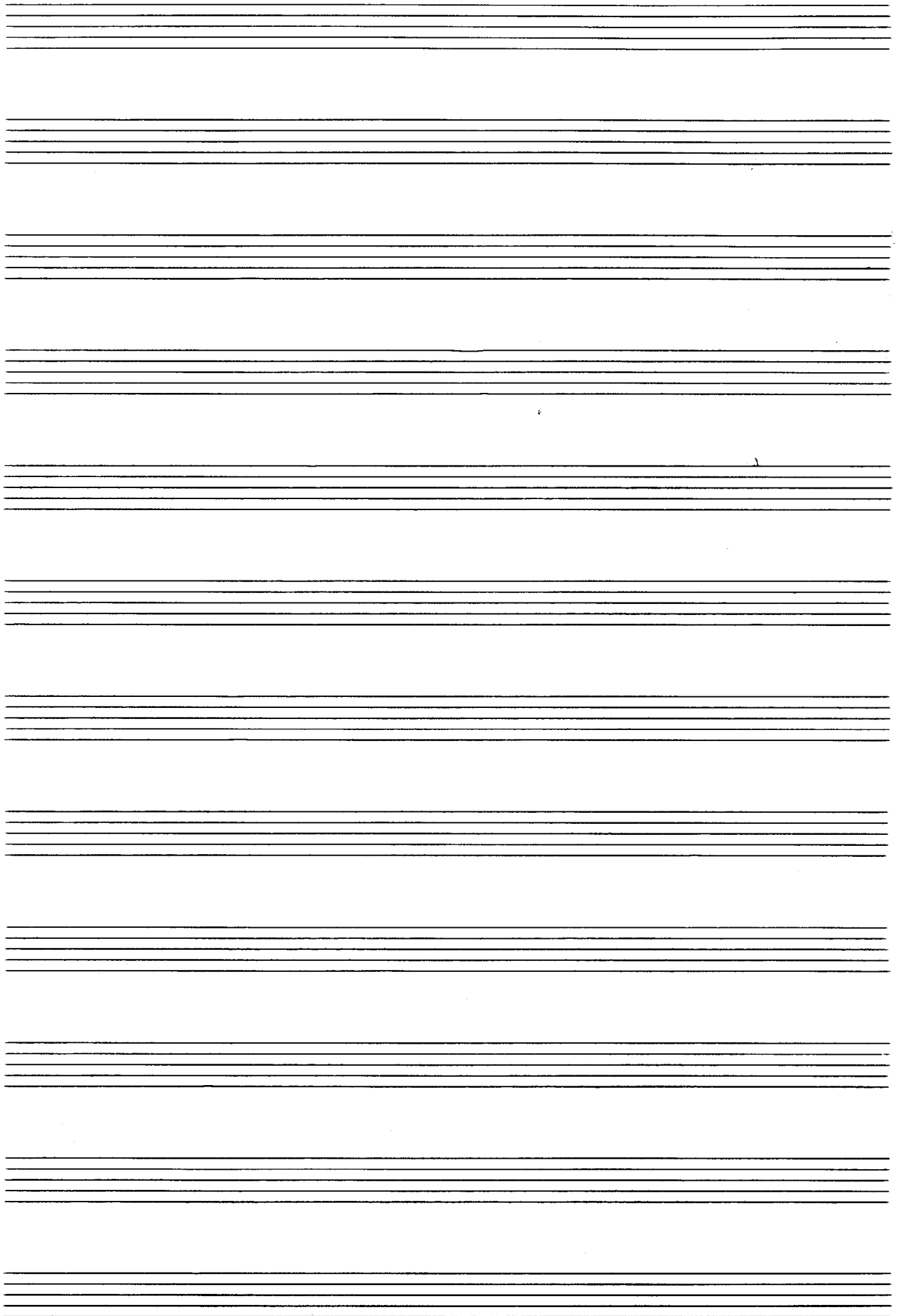
pp - cresc. pp

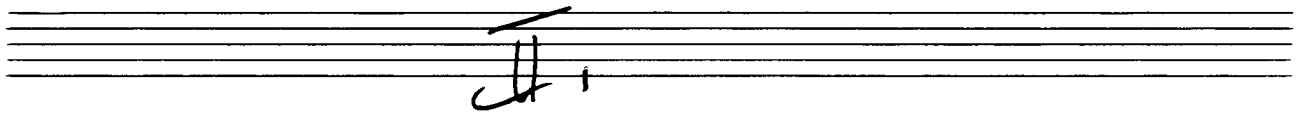
Handwritten musical notation for the second system, starting with 'attaca' and 'Tempo 1.'. It includes dynamic markings 'pp' and 'cresc. pp'.

Handwritten musical notation for the third system, continuing the melodic and accompaniment lines with various accidentals and dynamic markings.

Handwritten musical notation for the fourth system, concluding the piece with a final melodic phrase and accompaniment.

The image shows a page of handwritten musical notation on a grand staff. The notation is heavily scribbled and appears to be a rough sketch or a correction. It features a treble clef on the left, with a circled key signature of three sharps (F#, C#, G#). A vertical line is drawn across the staves, with a downward-pointing arrow above it. The notation includes various scribbled notes, lines, and symbols, but is largely illegible due to the heavy scribbles.

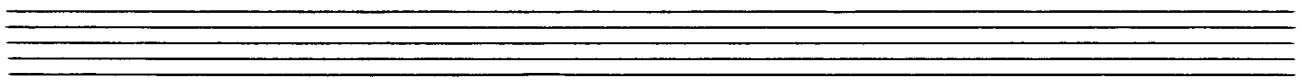




lento



ad libitum

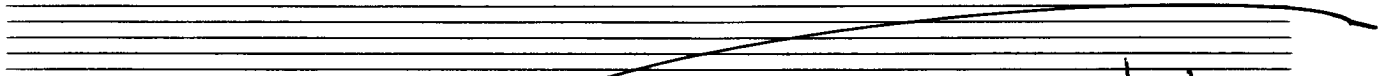
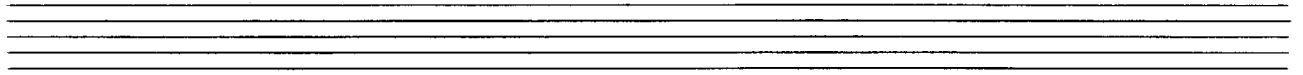


Tempo cresc.

Handwritten musical notation for the first system. The treble staff contains a sequence of chords: a G major triad (G, B, D), a circled G major triad (G, B, D), a circled G major triad with a sharp sign (G, B, D), and a complex chord with notes G, B, D, F, A, C, E, G. The bass staff contains a sequence of chords: a G major triad (G, B, D), a G major triad with a sharp sign (G, B, D), and a complex chord with notes G, B, D, F, A, C, E, G. There are various markings including slurs, accents, and dynamic markings.

Handwritten musical notation for the second system. The treble staff contains a sequence of chords: a complex chord with notes G, B, D, F, A, C, E, G, a complex chord with notes G, B, D, F, A, C, E, G, and a complex chord with notes G, B, D, F, A, C, E, G. The bass staff contains a sequence of chords: a G major triad (G, B, D), a G major triad with a sharp sign (G, B, D), and a complex chord with notes G, B, D, F, A, C, E, G. There are various markings including slurs, accents, and dynamic markings.

Handwritten musical notation for the third system. The treble staff contains a sequence of chords: a complex chord with notes G, B, D, F, A, C, E, G, a complex chord with notes G, B, D, F, A, C, E, G, and a complex chord with notes G, B, D, F, A, C, E, G. The bass staff contains a sequence of chords: a G major triad (G, B, D), a G major triad with a sharp sign (G, B, D), and a complex chord with notes G, B, D, F, A, C, E, G. There are various markings including slurs, accents, and dynamic markings.



Handwritten musical notation for the first system, featuring a treble clef and a bass clef. The upper staff contains a melodic line with notes and accidentals (sharps and flats) under a slur. The lower staff contains a few notes. A circled 'pp' dynamic marking is present in the first measure of the upper staff.



Handwritten musical notation for the second system, featuring a treble clef and a bass clef. The upper staff contains a melodic line with notes and accidentals under a slur. The lower staff contains a few notes. There are dynamic markings 'f' and '>' in the upper staff.

Adagio (2. + ev. mit

Handwritten musical notation for the third system, featuring a treble clef and a bass clef. The upper staff contains a melodic line with notes and accidentals under a slur. The lower staff contains a few notes. A circled 'p' dynamic marking is present in the first measure of the upper staff.

Handwritten musical notation for the fourth system, featuring a treble clef and a bass clef. The upper staff contains a melodic line with notes and accidentals under a slur. The lower staff contains a few notes. A circled 'pp' dynamic marking is present in the first measure of the upper staff.

III 1

Prestissimo

pp sempre crescendo ⇒

Handwritten musical notation for the first system. The treble clef staff contains a circled '4' and a series of notes with accidentals (sharps and naturals). The bass clef staff contains a sharp sign and several notes. A large slur covers the entire system.

Handwritten musical notation for the second system. The treble clef staff contains a flat sign and a series of notes. The bass clef staff contains a sharp sign and several notes. A large slur covers the entire system.

Handwritten musical notation for the third system. The treble clef staff contains a flat sign and a series of notes. The bass clef staff contains a flat sign and several notes. A large slur covers the entire system.

Handwritten musical notation for the fourth system. The treble clef staff contains a sharp sign and a series of notes. The bass clef staff contains a flat sign and several notes. A large slur covers the entire system.

Handwritten musical notation for the first system. The treble clef staff contains several chords with accidentals (flats and naturals) and some notes. The bass clef staff contains notes and rests, with a sharp sign at the beginning.

Handwritten musical notation for the second system. The treble clef staff contains chords and notes. The bass clef staff contains notes and rests.

Handwritten musical notation for the third system. The treble clef staff contains chords and notes. The bass clef staff contains notes and rests.

Handwritten musical notation for the fourth system. The treble clef staff contains chords and notes. The bass clef staff contains notes and rests, with a dynamic marking 'pp' at the beginning.

dim >

Handwritten musical notation for the first system, featuring two staves (treble and bass clef) with notes, accidentals, and dynamic markings.

Handwritten musical notation for the second system, featuring two staves (treble and bass clef) with notes, accidentals, and dynamic markings.

Handwritten musical notation for the third system, featuring two staves (treble and bass clef) with notes, accidentals, and dynamic markings.

Handwritten musical notation for the fourth system, featuring two staves (treble and bass clef) with notes, accidentals, and dynamic markings.

Handwritten musical notation for the first system. The top staff contains two measures of complex chords with accidentals (sharps and flats) and a fermata. The bottom staff contains two measures of a melodic line with a fermata. Dynamics include *f* and *ff*. A circled *ff* is also present in the second measure of the top staff.

Handwritten musical notation for the second system. The top staff is in 2/4 time, indicated by a circled *ff* and the time signature. It features a melodic line with a slur and a fermata. The bottom staff contains a bass line with a sharp sign and a fermata.

Handwritten musical notation for the third system. The top staff continues the melodic line with a slur and a fermata. The bottom staff contains a bass line with a sharp sign and a fermata.

Handwritten musical score for the first system. It features a treble clef staff with a wavy line and a bass clef staff with notes and rests. Above the treble staff, there are handwritten notes: a 'b' with a vertical line, '8/1', and a 'b' with a circle above it. The bass staff has a sharp sign (#) and a 'pp' dynamic marking. Below the bass staff, the word 'du' is written with a slur above it. To the right, there are handwritten notes 'D.C.', 'ad', and a square box.

Handwritten musical score for the second system. It features a treble clef staff with a wavy line and a bass clef staff with notes and rests. Above the treble staff, there is a circled 'CODA' marking and a sharp sign (#). The bass staff has a sharp sign (#) and a 'p' dynamic marking. Below the bass staff, the word 'sangre du' is written with a slur above it.

Handwritten musical score for the third system. It features a treble clef staff with a wavy line and a bass clef staff with notes and rests. The bass staff has a sharp sign (#) and a 'p' dynamic marking. Below the bass staff, there is a large handwritten 'X' mark.

Handwritten musical notation for the first system. The right hand part consists of three measures with chords and dynamic markings: p , p , and pp . The left hand part features a long note with a slur and some accidentals.

Handwritten musical notation for the second system. The right hand part starts with a very soft dynamic marking ppp and a chord. The left hand part has a long note.

Handwritten musical notation for the third system. The right hand part has complex chords and a large, sweeping slur. The left hand part has a long note.