

Sonate für
Klavier
1964

Notenheft



Adolf Scherbaum

Sonate für

Klavier

1964

Adolf Scherbaum

I.

Adagio

Handwritten musical notation for the first system, featuring a grand staff with treble and bass clefs and a 4/4 time signature. The staff contains several vertical bar lines, indicating a measure structure.

A set of empty musical staves.

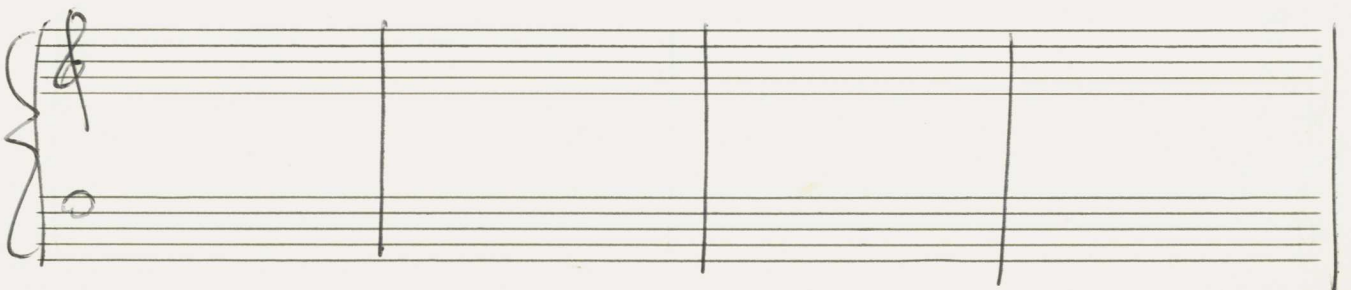
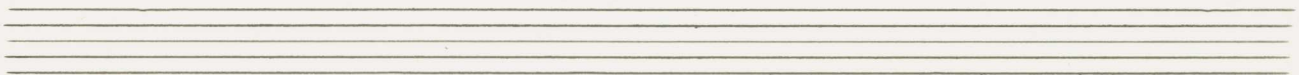
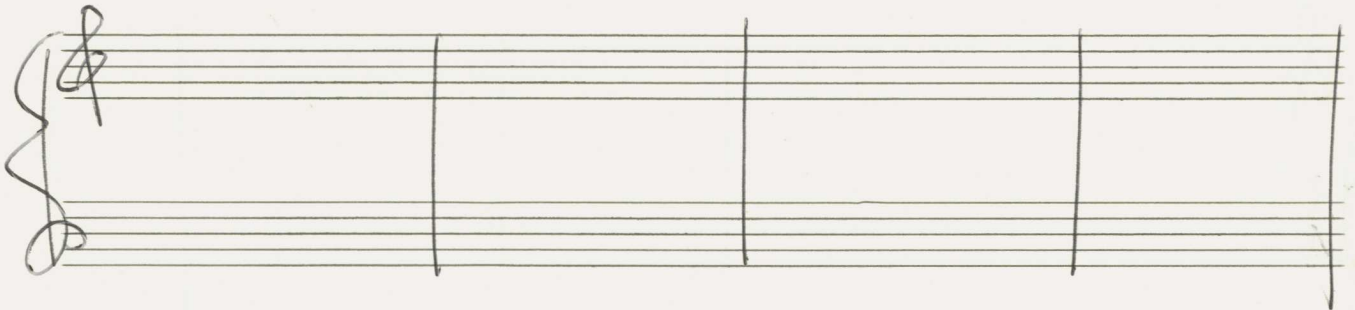
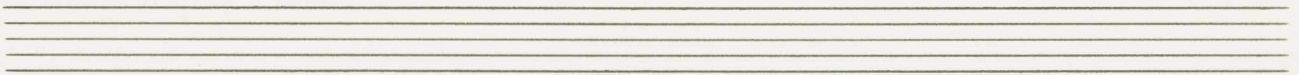
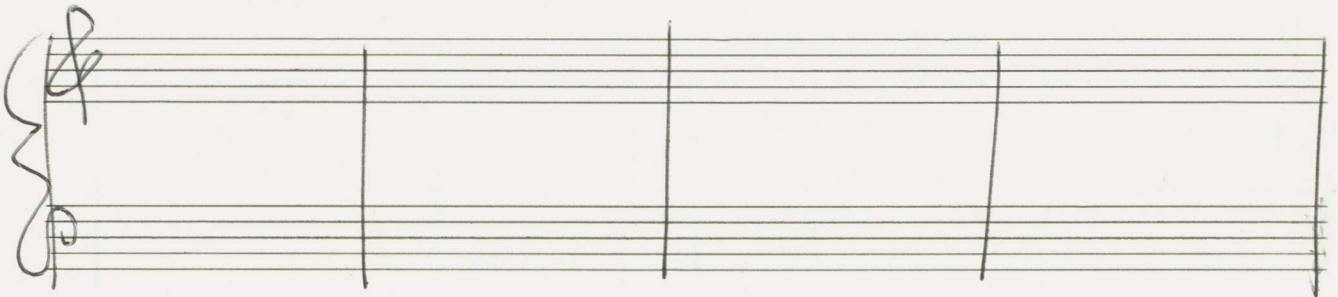
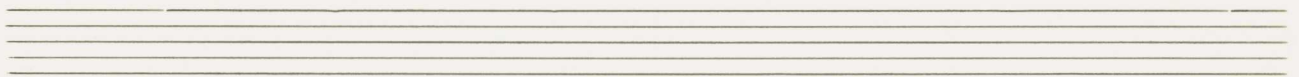
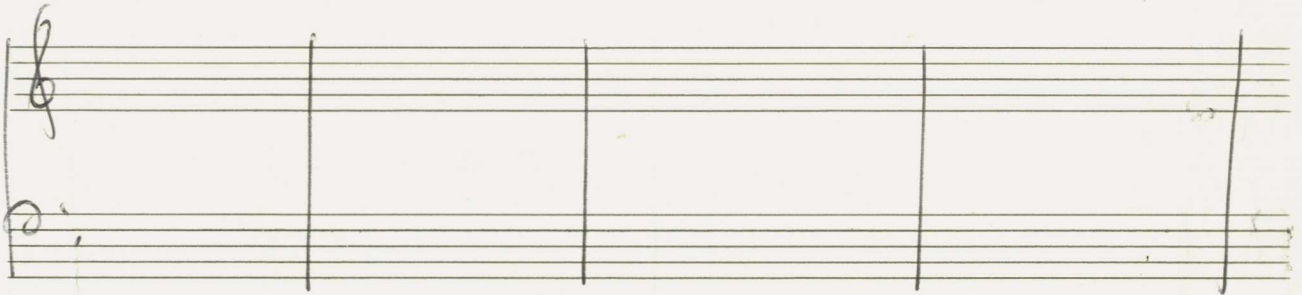
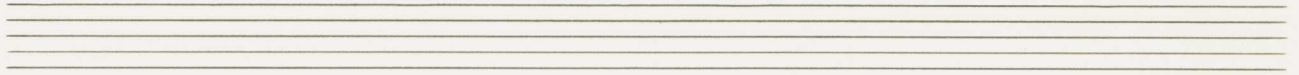
Handwritten musical notation for the second system, featuring a grand staff with treble and bass clefs. The staff contains several vertical bar lines.

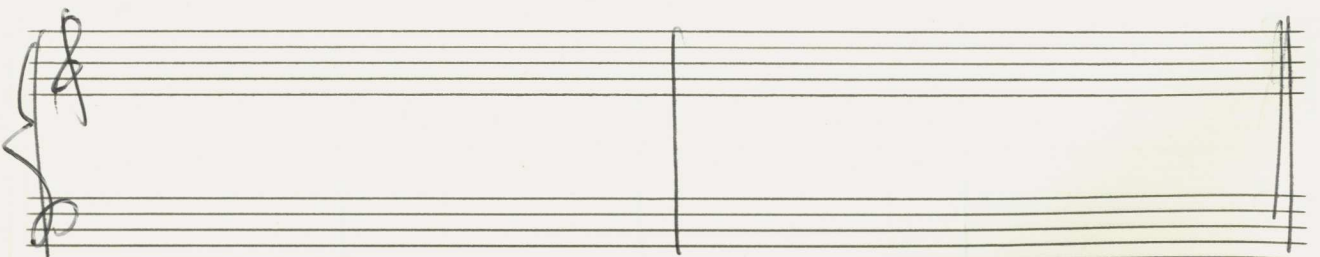
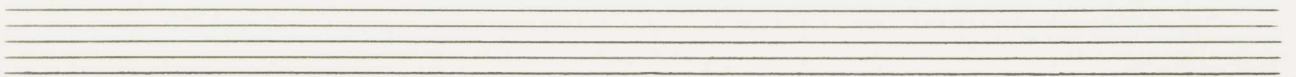
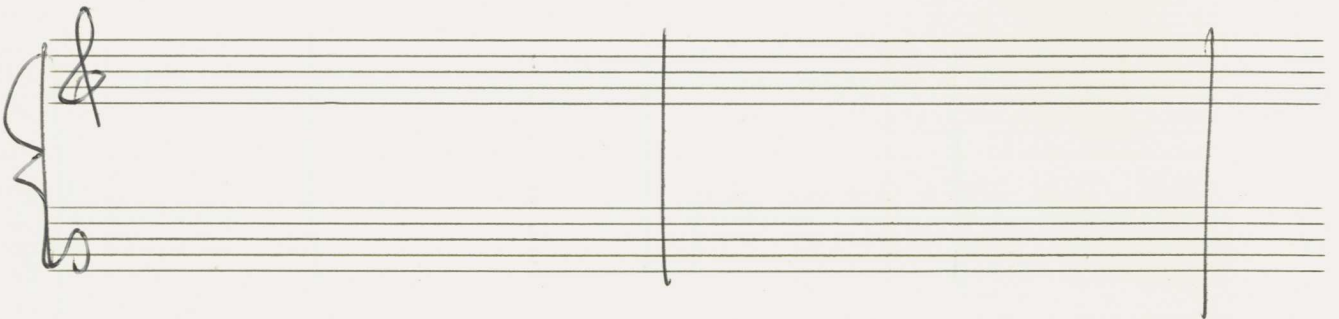
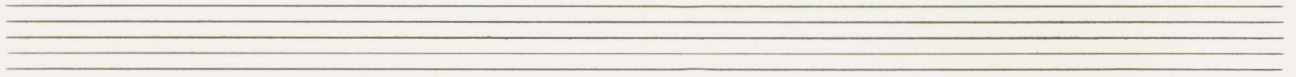
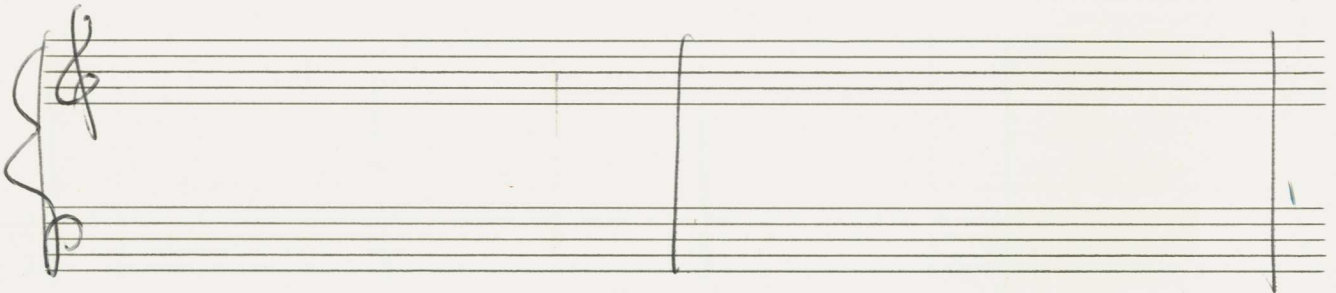
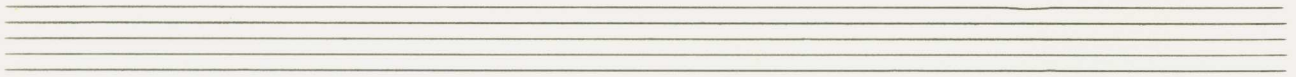
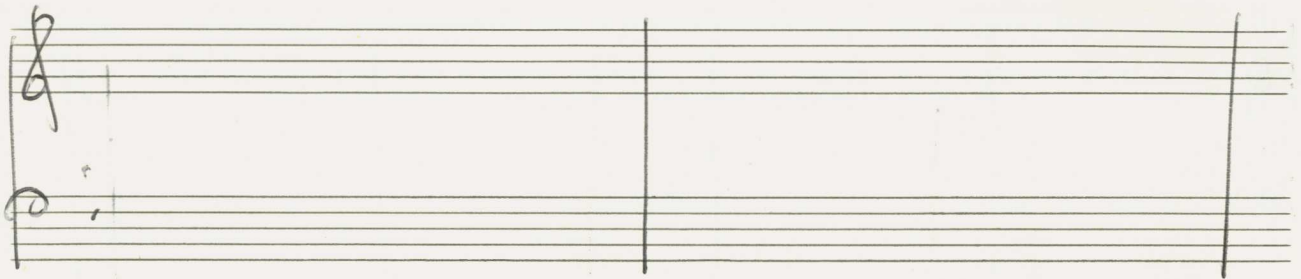
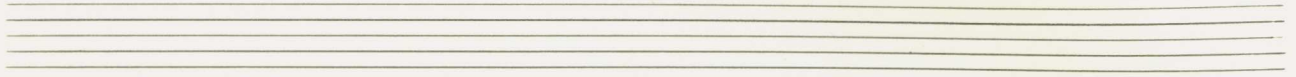
A set of empty musical staves.

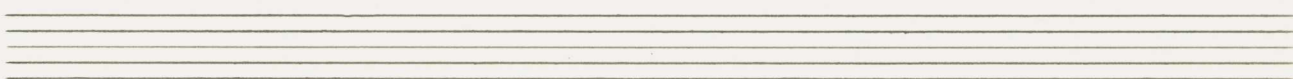
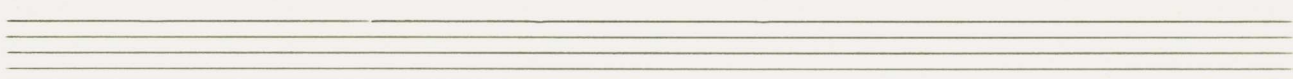
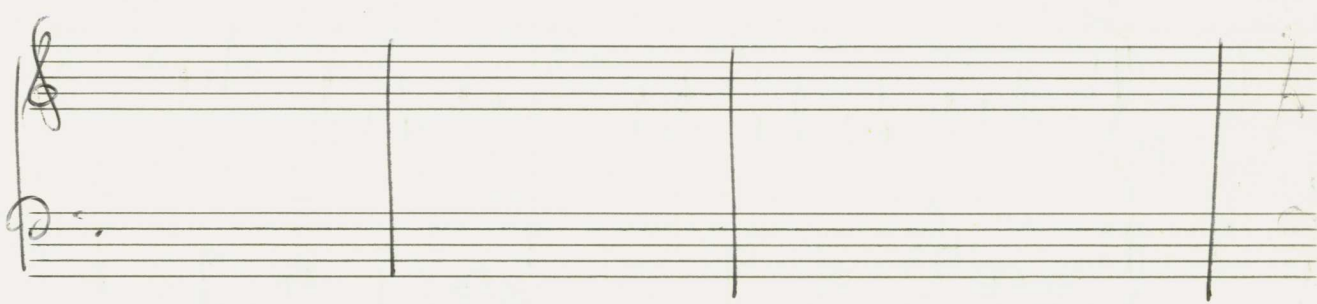
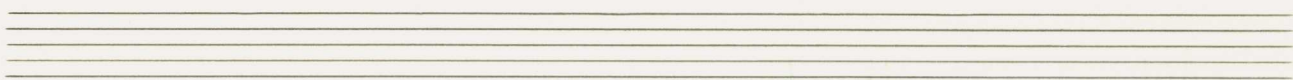
Handwritten musical notation for the third system, featuring a grand staff with treble and bass clefs. The staff contains several vertical bar lines.

A set of empty musical staves.

A set of empty musical staves.







Allegro moderato

Handwritten musical notation for the first system of a piano sonata. It consists of two staves. The right staff is in treble clef with a 4/4 time signature. The left staff is in bass clef. The music begins with a double bar line and a repeat sign. The right hand starts with a quarter note G4, followed by quarter notes A4, B4, and C5, then a half note B4. The left hand starts with a quarter note G3, followed by quarter notes A3, B3, and C4, then a half note B3. There are various accidentals and dynamics markings throughout the system.

Handwritten musical notation for the second system of a piano sonata. It consists of two staves. The right staff is in treble clef with a 4/4 time signature. The left staff is in bass clef. The music continues from the first system. The right hand starts with a quarter note B4, followed by quarter notes C5, B4, and A4, then a half note G4. The left hand starts with a quarter note B3, followed by quarter notes C4, B3, and A3, then a half note G3. There are various accidentals and dynamics markings throughout the system.

Handwritten musical notation for the third system of a piano sonata. It consists of two staves. The right staff is in treble clef with a 4/4 time signature. The left staff is in bass clef. The music continues from the second system. The right hand starts with a quarter note G4, followed by quarter notes A4, B4, and C5, then a half note B4. The left hand starts with a quarter note G3, followed by quarter notes A3, B3, and C4, then a half note B3. There are various accidentals and dynamics markings throughout the system.

Handwritten musical notation for the first system. The right hand part consists of three measures with notes and rests. The left hand part consists of three measures with chords and arpeggiated figures. The word "dim" is written above the first measure of the left hand. A circled "p" is written above the second measure of the left hand.

Handwritten musical notation for the second system. The right hand part consists of three measures with notes and rests. The left hand part consists of three measures with chords and arpeggiated figures.

Handwritten musical notation for the third system. The right hand part consists of three measures with notes and rests. The left hand part consists of three measures with chords and arpeggiated figures. The word "mf" is written above the second measure of the left hand.

Handwritten musical notation for the fourth system. The right hand part consists of three measures with notes and rests. The left hand part consists of three measures with chords and arpeggiated figures. The word "f" is written above the first measure of the left hand. A circled "f" is written above the third measure of the left hand.

largo

Handwritten musical notation for the first system, measures 1-2. The top staff is in treble clef and the bottom staff is in bass clef. The time signature is 4/4. The key signature has one sharp (F#). The first measure contains a half note G4 with a fermata, followed by a quarter note A4, a quarter note B4, and a quarter note C5. The second measure contains a half note D5 with a fermata, followed by a quarter note E5, a quarter note F#5, and a quarter note G5. The bass staff contains a half note G2 with a fermata, followed by a quarter note A2, a quarter note B2, and a quarter note C3. The second measure contains a half note D3 with a fermata, followed by a quarter note E3, a quarter note F#3, and a quarter note G3. The dynamic marking 'pp' is written above the first measure.

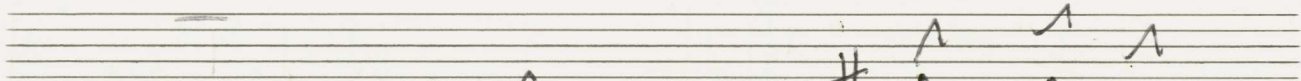
Handwritten musical notation for the second system, measures 3-4. The top staff is in treble clef and the bottom staff is in bass clef. The time signature is 4/4. The key signature has one flat (Bb). The third measure contains a half note Bb4 with a fermata, followed by a quarter note C5, a quarter note D5, and a quarter note Eb5. The fourth measure contains a half note F#5 with a fermata, followed by a quarter note G5, a quarter note A5, and a quarter note Bb5. The bass staff contains a half note Bb2 with a fermata, followed by a quarter note C3, a quarter note D3, and a quarter note Eb3. The fourth measure contains a half note F#3 with a fermata, followed by a quarter note G3, a quarter note A3, and a quarter note Bb3.

Handwritten musical notation for the third system, measures 5-6. The top staff is in treble clef and the bottom staff is in bass clef. The time signature is 4/4. The key signature has one flat (Bb). The fifth measure contains a half note Bb4 with a fermata, followed by a quarter note C5, a quarter note D5, and a quarter note Eb5. The sixth measure contains a half note F#5 with a fermata, followed by a quarter note G5, a quarter note A5, and a quarter note Bb5. The bass staff contains a half note Bb2 with a fermata, followed by a quarter note C3, a quarter note D3, and a quarter note Eb3. The sixth measure contains a half note F#3 with a fermata, followed by a quarter note G3, a quarter note A3, and a quarter note Bb3. A circled 'p' is written above the first measure.

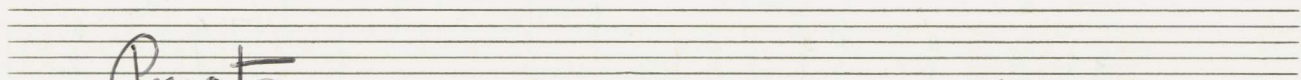
Handwritten musical notation for the fourth system, measures 7-8. The top staff is in treble clef and the bottom staff is in bass clef. The time signature is 4/4. The key signature has one sharp (F#). The seventh measure contains a half note F#4 with a fermata, followed by a quarter note G4, a quarter note A4, and a quarter note B4. The eighth measure contains a half note C5 with a fermata, followed by a quarter note D5, a quarter note E5, and a quarter note F#5. The bass staff contains a half note F#2 with a fermata, followed by a quarter note G2, a quarter note A2, and a quarter note B2. The eighth measure contains a half note C3 with a fermata, followed by a quarter note D3, a quarter note E3, and a quarter note F#3.



Handwritten musical notation on two staves. The upper staff is in treble clef and contains a sequence of notes: b_2 , b_3 , b_4 , b_5 , b_6 , b_7 , b_8 , b_9 , b_{10} , b_{11} , b_{12} , b_{13} , b_{14} , b_{15} , b_{16} , b_{17} , b_{18} , b_{19} , b_{20} . The lower staff is in bass clef and contains notes: b_1 , b_2 , b_3 , b_4 , b_5 , b_6 , b_7 , b_8 , b_9 , b_{10} , b_{11} , b_{12} , b_{13} , b_{14} , b_{15} , b_{16} , b_{17} , b_{18} , b_{19} , b_{20} . A circled sharp sign $\#$ is present in the lower staff.

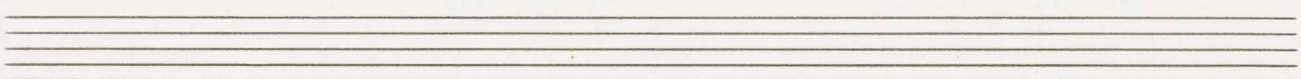


Handwritten musical notation on two staves. The upper staff is in treble clef and contains notes: b_1 , b_2 , b_3 , b_4 , b_5 , b_6 , b_7 , b_8 , b_9 , b_{10} , b_{11} , b_{12} , b_{13} , b_{14} , b_{15} , b_{16} , b_{17} , b_{18} , b_{19} , b_{20} . The lower staff is in bass clef and contains notes: b_1 , b_2 , b_3 , b_4 , b_5 , b_6 , b_7 , b_8 , b_9 , b_{10} , b_{11} , b_{12} , b_{13} , b_{14} , b_{15} , b_{16} , b_{17} , b_{18} , b_{19} , b_{20} . A circled sharp sign $\#$ is present in the lower staff. The text "(poco rit)" is written in the lower staff.



Presto

Handwritten musical notation on two staves. The upper staff is in treble clef and contains notes: b_1 , b_2 , b_3 , b_4 , b_5 , b_6 , b_7 , b_8 , b_9 , b_{10} , b_{11} , b_{12} , b_{13} , b_{14} , b_{15} , b_{16} , b_{17} , b_{18} , b_{19} , b_{20} . The lower staff is in bass clef and contains notes: b_1 , b_2 , b_3 , b_4 , b_5 , b_6 , b_7 , b_8 , b_9 , b_{10} , b_{11} , b_{12} , b_{13} , b_{14} , b_{15} , b_{16} , b_{17} , b_{18} , b_{19} , b_{20} . A circled sharp sign $\#$ is present in the lower staff.



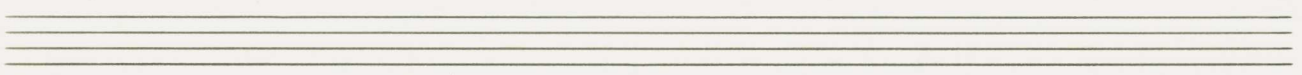
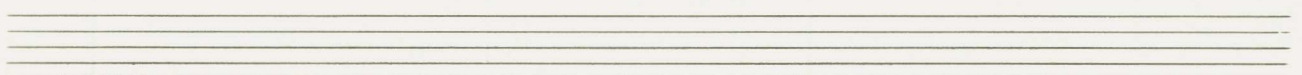
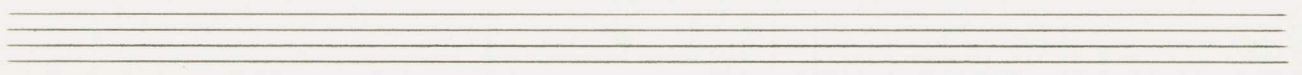
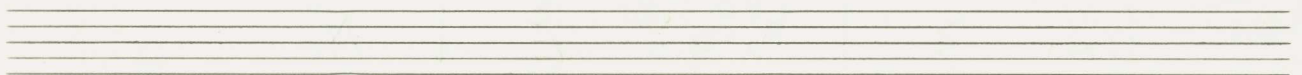
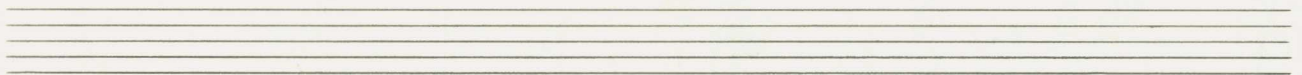
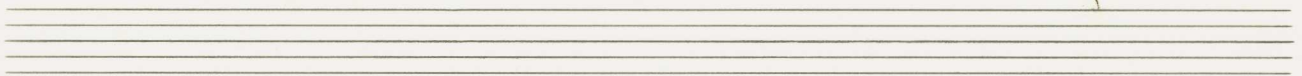
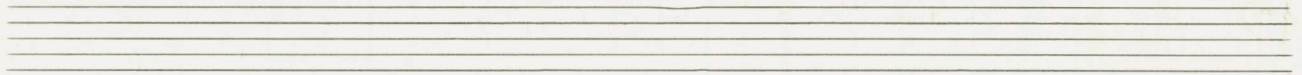
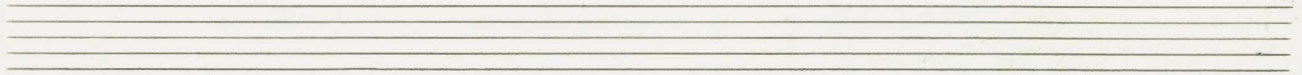
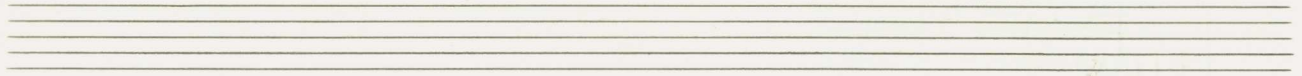
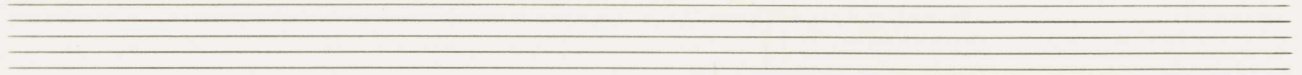
Handwritten musical notation for the first system. The upper staff contains complex chord structures with various accidentals (sharps, flats, naturals) and stems. The lower staff shows a melodic line with accents (^) and a few notes.

Handwritten musical notation for the second system. It includes a 4/4 time signature. The upper staff has complex chords and a melodic line with a slur. The lower staff has a melodic line with accents and some chordal accompaniment.

Handwritten musical notation for the third system. The upper staff features a melodic line with slurs and accents. The lower staff has a more complex accompaniment with chords and stems.

Handwritten musical notation for the fourth system, concluding the piece with a double bar line. The upper staff has a melodic line with slurs. The lower staff has a complex accompaniment with chords and stems.

The image shows a page of ten musical staves. The first two staves contain handwritten musical notation. On the first staff, there is a treble clef and a circled key signature consisting of three sharps (F#, C#, G#). Below the first staff, there is a vertical line with several notes and a sharp sign. To the right of this vertical line, there are wavy lines and a large curved line that extends across the second and third staves. The remaining staves are empty.



II,

Lento

sehr ruhig

Tempo cresc.

Handwritten musical notation for the first system. The treble clef staff contains a melodic line with a slur over the first two measures, a circled note in the second measure, and a slur over the third measure. The bass clef staff contains a bass line with a slur over the first two measures and a circled note in the second measure. The notation includes various accidentals and dynamic markings.

Handwritten musical notation for the second system. The treble clef staff features a melodic line with a slur over the first two measures and a slur over the third measure. The bass clef staff contains a bass line with a slur over the first two measures and a slur over the third measure. The notation includes various accidentals and dynamic markings.

Handwritten musical notation for the third system. The treble clef staff features a melodic line with a slur over the first two measures and a slur over the third measure. The bass clef staff contains a bass line with a slur over the first two measures and a slur over the third measure. The notation includes various accidentals and dynamic markings.

Handwritten musical notation for the first system. It consists of two staves. The upper staff is in treble clef and contains a melodic line with notes G4, A4, B4, C5, B4, A4, G4, and F4. The lower staff is in bass clef and contains a bass line with notes G3, F3, E3, D3, C3, B2, A2, and G2. Dynamics include 'mf' and 'f'. There are various articulation marks like slurs and accents.

Handwritten musical notation for the second system. It consists of two staves. The upper staff is in treble clef and contains a melodic line with notes G4, A4, B4, C5, B4, A4, G4, and F4. The lower staff is in bass clef and contains a bass line with notes G3, F3, E3, D3, C3, B2, A2, and G2. Dynamics include 'mf' and 'f'. There are various articulation marks like slurs and accents.

Handwritten musical notation for the third system. It consists of two staves. The upper staff is in treble clef and contains a melodic line with notes G4, A4, B4, C5, B4, A4, G4, and F4. The lower staff is in bass clef and contains a bass line with notes G3, F3, E3, D3, C3, B2, A2, and G2. Dynamics include 'mf' and 'f'. There are various articulation marks like slurs and accents.

Handwritten musical notation for the first system. It consists of two staves. The upper staff is in treble clef and contains a melodic line with a slur over it. The notes include sharps and flats. A circled 'pp' (pianissimo) dynamic marking is present. The lower staff is in bass clef and contains a few notes and rests.

Handwritten musical notation for the second system. It consists of two staves. The upper staff is in treble clef and contains a melodic line with a slur over it. The notes include sharps and flats. A 'f' (forte) dynamic marking is present. The lower staff is in bass clef and contains a few notes and rests.

Allegro (2. + ev. mit -----)

Handwritten musical notation for the third system. It consists of two staves. The upper staff is in treble clef and contains a melodic line with a slur over it. The notes include sharps and flats. A circled 'p' (piano) dynamic marking is present. The lower staff is in bass clef and contains a few notes and rests.

III,

Prestissimo

pp sempre crescendo →

Handwritten musical notation for the first system. The treble clef staff contains notes with accidentals (sharps and naturals) and slurs. Above the staff are dynamic markings: mf , f , and mf . The bass clef staff contains notes with accidentals and slurs. The system is divided into three measures by vertical bar lines.

Handwritten musical notation for the second system. The treble clef staff contains notes with accidentals and slurs. The bass clef staff contains notes with accidentals and slurs. The system is divided into three measures by vertical bar lines.

Handwritten musical notation for the third system. The treble clef staff contains notes with accidentals and slurs. A circled f dynamic marking is present. The bass clef staff contains notes with accidentals and slurs. The system is divided into three measures by vertical bar lines.

Handwritten musical notation for the fourth system. The treble clef staff contains notes with accidentals and slurs. The bass clef staff contains notes with accidentals and slurs. The system is divided into three measures by vertical bar lines.

Handwritten musical notation for the first system. The top staff (treble clef) contains complex chordal structures with dynamic markings λ and \wedge . The bottom staff (bass clef) contains chords with a sharp sign (\sharp) and dynamic markings $>$.

Handwritten musical notation for the second system. The top staff (treble clef) contains complex chordal structures with dynamic markings $>$. The bottom staff (bass clef) contains chords with dynamic markings $>$.

Handwritten musical notation for the third system. The top staff (treble clef) contains complex chordal structures with dynamic markings $>$. The bottom staff (bass clef) contains chords with dynamic markings $>$.

Handwritten musical notation for the fourth system. The top staff (treble clef) contains complex chordal structures with dynamic markings f . The bottom staff (bass clef) contains chords with dynamic markings pp and f .

dün >

Handwritten musical notation for the first system. The upper staff (treble clef) contains a whole note chord with a circled 'p' dynamic marking. The lower staff (bass clef) contains a whole note chord with a circled 'p' dynamic marking. There are some handwritten annotations above the notes, including '87' and a circled 'p'.

Handwritten musical notation for the second system. The upper staff (treble clef) contains a whole note chord with a circled 'p' dynamic marking. The lower staff (bass clef) contains a whole note chord with a circled 'p' dynamic marking. There are some handwritten annotations above the notes, including '87' and a circled 'p'.

Handwritten musical notation for the third system. The upper staff (treble clef) contains a whole note chord with a circled 'p' dynamic marking. The lower staff (bass clef) contains a whole note chord with a circled 'p' dynamic marking. There are some handwritten annotations above the notes, including '87' and a circled 'p'.

Handwritten musical notation for the first system. The top staff contains two measures of complex chordal structures with various accidentals (sharps, naturals, flats) and a dynamic marking of *f*. The bottom staff contains two measures of simpler chordal structures, also with dynamic markings of *f*. A circled sharp symbol is present in the top right corner.

Handwritten musical notation for the second system. The top staff is in treble clef with a circled sharp symbol and a time signature of 2/4. It contains three measures of melodic lines with slurs and accents. The bottom staff contains three measures of chordal accompaniment with slurs.

Handwritten musical notation for the third system. The top staff contains three measures of melodic lines with slurs and accents. The bottom staff contains three measures of chordal accompaniment with slurs.

Handwritten musical notation for the first system. The treble clef part features a long slur over three measures, with notes marked with accents (>) and dynamics (p, pp). The bass clef part has notes with slurs and dynamic markings.

Handwritten musical notation for the second system. The treble clef part has notes with slurs and a ppp dynamic marking. The bass clef part has notes with slurs.

Handwritten musical notation for the third system. The treble clef part has notes with slurs and a dynamic marking. The bass clef part has notes with slurs and a dynamic marking.