

L.v. BEETHOVEN



W.A. MOZART



NOTENHEFT

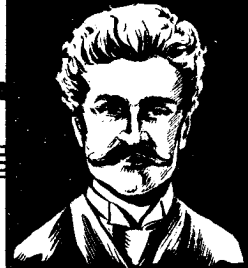
F. SCHUBERT



J. HAYDN



J. STRAUSS



SONATE (Jazz)

für Piano

1966

Adolf Scherbaum
Wien

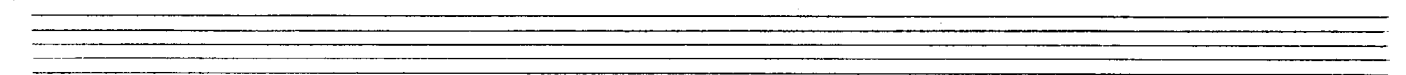
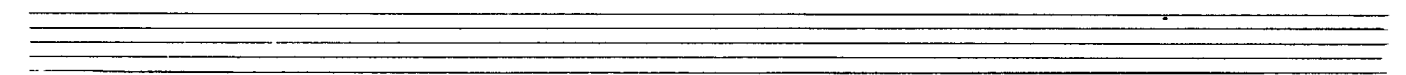
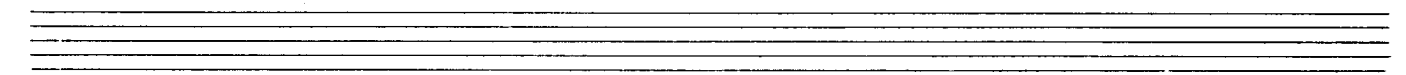
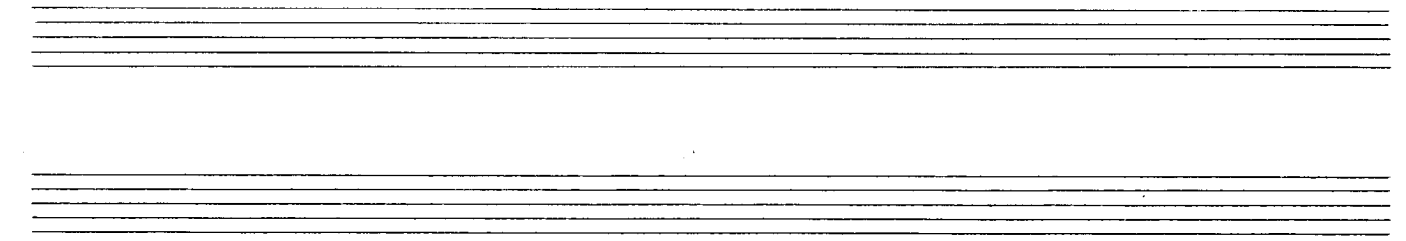
1

Mod. assai

Handwritten musical notation for the first system. It consists of two staves. The top staff is in treble clef and contains four chords with accents (^) above them, followed by a bar with a fermata. The bottom staff is in bass clef and contains rhythmic notation with stems and flags, corresponding to the chords above. A circled 'f' dynamic marking is present in the first measure.

Handwritten musical notation for the second system. The top staff features complex chordal structures with multiple notes and accidentals, and a fermata. The bottom staff contains rhythmic notation with stems and flags, mirroring the complexity of the chords above.

Handwritten musical notation for the third system. The top staff shows complex chordal structures with a circled 'f' dynamic marking and a fermata. The bottom staff contains rhythmic notation with stems and flags, corresponding to the chords above.



Handwritten musical notation for the first system, featuring a treble and bass clef with complex rhythmic patterns and accidentals.

(poco rit)

Handwritten musical notation for the second system, including a "poco rit" marking and complex chordal structures.

Tempo ①

Handwritten musical notation for the third system, marked "Tempo 1" and "p", with complex rhythmic patterns.

Handwritten musical notation for the fourth system, featuring complex rhythmic patterns and accidentals.

Handwritten musical notation for the first system. It consists of two staves. The upper staff is in treble clef and contains several measures of music with notes and rests. The lower staff is in bass clef and contains chords and rhythmic markings. A dynamic marking 'f' is present in the first measure of the lower staff. There are also some handwritten annotations above the notes in the upper staff.

Handwritten musical notation for the second system. It consists of two staves. The upper staff is in treble clef and contains several measures of music with notes and rests. The lower staff is in bass clef and contains chords and rhythmic markings. A dynamic marking 'f' is present in the first measure of the lower staff. There are also some handwritten annotations above the notes in the upper staff.

Handwritten musical notation for the third system. It consists of two staves. The upper staff is in treble clef and contains several measures of music with notes and rests. The lower staff is in bass clef and contains chords and rhythmic markings. A dynamic marking 'f' is present in the first measure of the lower staff. There are also some handwritten annotations above the notes in the upper staff.

gut + du

Lento

ruhige (3/4)

Handwritten musical notation for the first system. The treble clef staff contains a series of notes with various accidentals (sharps, flats, naturals) and a fermata. The bass clef staff contains notes with accidentals and rests. A large bracket spans across the first two measures.

Handwritten musical notation for the second system. It continues the melodic and harmonic development from the first system, featuring complex rhythmic patterns and a variety of accidentals.

Handwritten musical notation for the third system. The instruction "(poco rit)" is written above the staff. The notation includes notes with accidentals and rests, indicating a slight deceleration in tempo.

Handwritten musical notation for the fourth system. The instruction "noch ruhiger" (even more slowly) is written above the staff. The system concludes with a CODA symbol (a circle with a cross) and the text "CODA".

ins Tempo ① übergehen

D.C.

Handwritten musical notation for the first system. It consists of two staves. The top staff is in treble clef with a circled '1' and a 4/4 time signature. The bottom staff is in bass clef. The key signature is one sharp (F#). The music features a series of chords in the right hand and a melodic line in the left hand. A dynamic marking 'f' is written below the staves.

Tempo ①

Handwritten musical notation for the second system. It consists of two staves. The top staff is in treble clef with a circled '1' and a 4/4 time signature. The bottom staff is in bass clef. The key signature is one sharp (F#). The music features a series of chords in the right hand and a melodic line in the left hand. A dynamic marking 'ff' is written at the beginning.

Overt.

Handwritten musical notation for the third system. It consists of two staves. The top staff is in treble clef with a circled '1' and a 4/4 time signature. The bottom staff is in bass clef. The key signature is one sharp (F#). The music features a series of chords in the right hand and a melodic line in the left hand. A dynamic marking 'pp' is written at the beginning.

Handwritten musical notation for the fourth system. It consists of two staves. The top staff is in treble clef with a circled '1' and a 4/4 time signature. The bottom staff is in bass clef. The key signature is one sharp (F#). The music features a series of chords in the right hand and a melodic line in the left hand. A dynamic marking 'mf' is written at the beginning.

Alleg.

Handwritten musical notation for the first system. The treble clef staff contains a sequence of notes: a half note G4 with an accent (^), followed by a quarter note F#4, and then a series of chords: a half note chord (F#4, G4, A4), a half note chord (G4, A4, B4), and a half note chord (A4, B4, C5). The bass clef staff contains a half note G3, followed by a quarter note F#3, and then a series of chords: a half note chord (F#3, G3, A3), a half note chord (G3, A3, B3), and a half note chord (A3, B3, C4). A bar line is present after the first measure.

Handwritten musical notation for the second system. The treble clef staff contains a half note G4 with an accent (^), followed by a quarter note F#4, and then a series of chords: a half note chord (F#4, G4, A4), a half note chord (G4, A4, B4), and a half note chord (A4, B4, C5). The bass clef staff contains a half note G3, followed by a quarter note F#3, and then a series of chords: a half note chord (F#3, G3, A3), a half note chord (G3, A3, B3), and a half note chord (A3, B3, C4). A bar line is present after the first measure.

Handwritten musical notation for the third system. The treble clef staff contains a half note G4 with an accent (^), followed by a quarter note F#4, and then a series of chords: a half note chord (F#4, G4, A4), a half note chord (G4, A4, B4), and a half note chord (A4, B4, C5). The bass clef staff contains a half note G3, followed by a quarter note F#3, and then a series of chords: a half note chord (F#3, G3, A3), a half note chord (G3, A3, B3), and a half note chord (A3, B3, C4). A bar line is present after the first measure. The text "(quit...)" is written above the second measure.

Handwritten musical notation for the fourth system. The treble clef staff contains a half note G4 with an accent (^), followed by a quarter note F#4, and then a series of chords: a half note chord (F#4, G4, A4), a half note chord (G4, A4, B4), and a half note chord (A4, B4, C5). The bass clef staff contains a half note G3, followed by a quarter note F#3, and then a series of chords: a half note chord (F#3, G3, A3), a half note chord (G3, A3, B3), and a half note chord (A3, B3, C4). A bar line is present after the first measure. The word "Lento" is written above the first measure.

Handwritten musical notation for the first system. The treble clef staff contains notes with various accidentals (sharps and naturals) and slurs. The bass clef staff shows a complex chord structure with many notes, some marked with a '9' (likely a 9th chord), and a large slur spanning across the system.

Handwritten musical notation for the second system. The treble clef staff has notes with accidentals and slurs. The bass clef staff features a complex chord structure with many notes and accidentals, including a '9' marking.

(rit + dim)

Handwritten musical notation for the third system. The treble clef staff contains notes with accidentals and slurs. The bass clef staff has notes with accidentals and a large slur. A circled 'p' is visible in the bass staff.

(2. + Dec.
al ϕ
CODA

Handwritten musical notation for the fourth system. The treble clef staff shows a complex melodic line with many notes and slurs. The bass clef staff has a complex chord structure with many notes and accidentals. A circled 'p' is present in the bass staff.

♩ CODA (Tempo ①) accel. bis Presto

Presto

quasi

Prestissimo

Lento

Tempo

Handwritten musical score for the first system. It consists of two staves. The top staff is in treble clef and the bottom in bass clef. The music includes several measures with notes, rests, and dynamic markings such as *p* and *f*. There are also some handwritten annotations above the notes, possibly indicating phrasing or accents. The system concludes with a double bar line and the word "Fine" written to the right.

Allegro (oder ruhig) Satz 2

Handwritten musical score for the second system, labeled "Satz 2". It begins with the tempo marking *Allegro (oder ruhig)*. The system contains two staves. The top staff has a treble clef and the bottom a bass clef. The music features complex chordal textures in the bass and melodic lines in the treble. There are dynamic markings like *p* and *f*, and various accidentals. The system ends with a double bar line.

Handwritten musical score for the third system. It consists of two staves. The top staff is in treble clef and the bottom in bass clef. The music continues with complex textures and dynamic markings like *p* and *f*. The system concludes with a double bar line.

(hier langsamer werden

sehr breit

(pesante

(frei)

p

Lunga

mp

Finé

Tempo (1) *sehr ruhig*

ad

3

Handwritten musical notation for the first system. The treble clef staff contains a series of chords: a triad (F, A, C), a triad (F, A, C), a triad (F, A, C), a triad (F, A, C), a triad (F, A, C), and a triad (F, A, C). The bass clef staff contains a series of chords: a triad (F, A, C), a triad (F, A, C), a triad (F, A, C), and a triad (F, A, C). A large slur covers the first five measures. The word "Gloss" is written in the right margin.

Handwritten musical notation for the second system. The treble clef staff contains a series of chords: a triad (F, A, C), a triad (F, A, C), a triad (F, A, C), a triad (F, A, C), and a triad (F, A, C). The bass clef staff contains a series of chords: a triad (F, A, C), a triad (F, A, C), a triad (F, A, C), and a triad (F, A, C). A large slur covers the first five measures. The word "rit" is written in the right margin. A circled "F" is written below the staff.

sehr
Largo (♩) *breit*

Handwritten musical notation for the third system. The treble clef staff contains a series of chords: a triad (F, A, C), a triad (F, A, C), a triad (F, A, C), and a triad (F, A, C). The bass clef staff contains a series of chords: a triad (F, A, C), a triad (F, A, C), a triad (F, A, C), and a triad (F, A, C). A circled "F" is written below the staff.

Moder. (♩) (*vorwärts — drängend*)

Handwritten musical notation for the fourth system. The treble clef staff contains a series of chords: a triad (F, A, C), a triad (F, A, C), a triad (F, A, C), and a triad (F, A, C). The bass clef staff contains a series of chords: a triad (F, A, C), a triad (F, A, C), a triad (F, A, C), and a triad (F, A, C). A circled "F" is written below the staff.

quell.

Handwritten musical notation for the first system. The treble clef staff begins with a '7' chord symbol and contains a complex, dense chordal texture with many notes. The bass clef staff contains a simpler accompaniment with a few notes. A double bar line is present.

Handwritten musical notation for the second system. The treble clef staff begins with a circled sharp sign and contains a complex chordal texture with many notes. The bass clef staff contains a simpler accompaniment with a few notes. A double bar line is present.

(wieder breit) (perante)

Handwritten musical notation for the third system. The treble clef staff begins with a circled sharp sign and contains a complex chordal texture with many notes. The bass clef staff contains a simpler accompaniment with a few notes. A double bar line is present.

(Z. + Decal ~~al~~ ~~Frü~~)

dün trit

Handwritten musical notation for the fourth system. The treble clef staff begins with the text 'dün trit' and a circled sharp sign, followed by a complex chordal texture with many notes. The bass clef staff contains a simpler accompaniment with a few notes. A double bar line is present.

Satz [3]

Allergo agitato

Handwritten musical notation for the first system. It features a treble clef on the left, a circled 'H' in the center, and a 4/4 time signature on the right. The notation is written on a five-line staff.