

49/4780

L.v. BEETHOVEN



W.A. MOZART



NOTENHEFT

F. SCHUBERT



J. HAYDN



J. STRAUSS



SONATE (Jazz)

für Piano

1966

Adolf Scherbaum

Wien

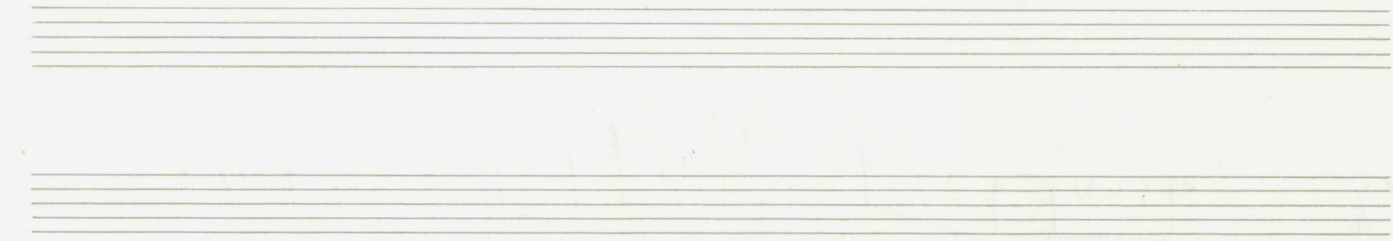
1

Mod. assai

Handwritten musical notation for the first system. It features a treble and bass clef with a 4/4 time signature. A circled 'f' indicates a forte dynamic. The right hand plays a series of chords with accents, and the left hand plays a rhythmic pattern of eighth notes.

Handwritten musical notation for the second system. The right hand continues with chords, and the left hand plays a more complex rhythmic pattern with eighth and sixteenth notes.

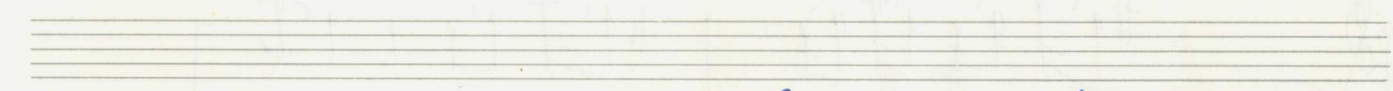
Handwritten musical notation for the third system. The right hand features a circled 'F' and continues with chords. The left hand plays a rhythmic pattern with eighth notes.



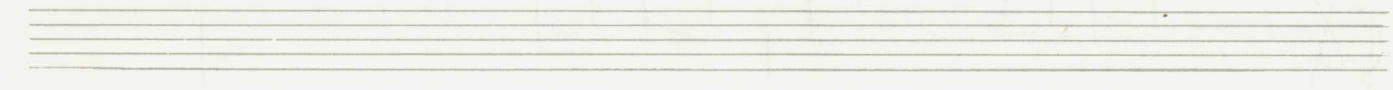
Handwritten musical notation for the first system. The upper staff contains several groups of notes with stems pointing upwards, each marked with a tilde (~) and an accent (^). The lower staff contains a single note with a circled 'o' and a colon ':' below it. A vertical bar line is present after the first group of notes.



Handwritten musical notation for the second system. The upper staff contains several groups of notes with stems pointing downwards, each marked with a tilde (~) and an accent (^). The lower staff contains a single note with a flat sign (b) below it. A vertical bar line is present after the first group of notes.



Handwritten musical notation for the third system. The upper staff contains a sequence of notes with stems pointing upwards, marked with accents (^) and slurs. The lower staff contains a sequence of notes with stems pointing downwards, marked with flats (b) and slurs. A vertical bar line is present after the first group of notes.



Handwritten musical notation for the first system. The treble clef staff contains a melodic line with notes and accidentals (flats and sharps) and a slur over the first two measures. The bass clef staff contains a bass line with notes and accidentals, including a 7/9 time signature.

(poco più)

Handwritten musical notation for the second system. The treble clef staff contains notes with accidentals and a slur. The bass clef staff contains notes with a 7/9 time signature and a sharp sign at the end of the system.

Tempo ①

Handwritten musical notation for the third system. The treble clef staff contains notes with accidentals and a slur. The bass clef staff contains notes with a 7/9 time signature and a piano (p) dynamic marking.

Handwritten musical notation for the fourth system. The treble clef staff contains notes with accidentals and a slur. The bass clef staff contains notes with a 7/9 time signature.

Handwritten musical notation for the first system. It consists of two staves. The upper staff contains several chords and notes, with dynamic markings such as f and f . The lower staff contains a bass line with notes and rests. A large blue checkmark is drawn below the system.

Handwritten musical notation for the second system. It consists of two staves. The upper staff contains several chords and notes, with dynamic markings such as f . The lower staff contains a bass line with notes and rests. A circled 'X' is drawn on the left side of the system.

Handwritten musical notation for the third system. It consists of two staves. The upper staff contains several chords and notes, with dynamic markings such as f . The lower staff contains a bass line with notes and rests. The word "(guit)" is written above the system.

gut + du

Lento

Handwritten musical notation for the first system. It features a treble clef and a key signature of one sharp (F#). The notation includes a melody line with a slur over the first two measures and a bass line with notes and rests. Chord symbols like $b_4b_7b_7$ and $b_9b_9b_7$ are written above the staff.

Handwritten musical notation for the second system. It features a treble clef and a key signature of one sharp (F#). The notation includes a melody line with a slur over the first two measures and a bass line with notes and rests. Chord symbols like $b_4b_7b_7$ and $b_9b_9b_7$ are written above the staff.

ruhige (3/4)

Handwritten musical notation for the third system. It features a treble clef and a key signature of one sharp (F#). The notation includes a melody line with a slur over the first two measures and a bass line with notes and rests. Chord symbols like $\#9$ and $\#9b_7$ are written above the staff.

Handwritten musical notation for the first system. The right hand (treble clef) contains a melodic line with a slur over the first two measures and an accent (^) over the first note. The left hand (bass clef) contains a bass line with a slur over the first two measures and a fermata over the second measure. Chord symbols are written above and below the notes.

Handwritten musical notation for the second system. The right hand (treble clef) contains a melodic line with a slur over the first two measures and an accent (^) over the first note. The left hand (bass clef) contains a bass line with a slur over the first two measures and a fermata over the second measure. Chord symbols are written above and below the notes.

Handwritten musical notation for the third system. The right hand (treble clef) contains a melodic line with a slur over the first two measures and an accent (^) over the first note. The left hand (bass clef) contains a bass line with a slur over the first two measures and a fermata over the second measure. Chord symbols are written above and below the notes. The tempo marking "(poco rit)" is written above the second measure.

Handwritten musical notation for the fourth system. The right hand (treble clef) contains a melodic line with a slur over the first two measures and an accent (^) over the first note. The left hand (bass clef) contains a bass line with a slur over the first two measures and a fermata over the second measure. Chord symbols are written above and below the notes. The tempo marking "moder. ritiger" is written above the first measure. The word "CODA" is written at the end of the system, accompanied by a circled cross symbol.

ins Tempo ① übergehen

D.C.

Handwritten musical notation for the first system. It features a treble and bass clef with a 4/4 time signature. The key signature has one sharp (F#) and one flat (Bb). The notation includes a circled '1' in the treble clef, a circled '1' in the bass clef, and a circled '1' next to the time signature. The music consists of two measures of chords in the treble and eighth notes in the bass, followed by two measures of sustained chords in both staves. A dynamic marking 'f' is written below the second measure.

Tempo ①

Handwritten musical notation for the second system. It features a treble and bass clef. The notation includes a circled '1' in the bass clef. The music consists of two measures of chords in the treble and eighth notes in the bass, followed by two measures of sustained chords in both staves. A dynamic marking 'ff' is written to the left of the first measure.

Osc. i

Handwritten musical notation for the third system. It features a treble and bass clef. The notation includes a circled '1' in the bass clef. The music consists of two measures of chords in the treble and eighth notes in the bass, followed by two measures of sustained chords in both staves. A dynamic marking 'pp' is written to the left of the first measure.

Handwritten musical notation for the fourth system. It features a treble and bass clef. The notation includes a circled '1' in the bass clef. The music consists of two measures of chords in the treble and eighth notes in the bass, followed by two measures of sustained chords in both staves. A dynamic marking 'mf' is written to the left of the first measure.

Handwritten musical notation for the first system. The top staff is in treble clef with a circled sharp sign. It contains a melodic line with slurs and accents, and a bass line with a circled sharp sign. The bottom staff is empty.

Handwritten musical notation for the second system. The top staff is in treble clef with a circled sharp sign. It contains a melodic line with slurs and accents, and a bass line with a circled sharp sign. The bottom staff is empty.

Handwritten musical notation for the third system. The top staff is in treble clef with a circled sharp sign. It contains a melodic line with slurs and accents, and a bass line with a circled sharp sign. The bottom staff is empty.

Handwritten musical notation for the fourth system. The top staff is in treble clef with a circled sharp sign. It contains a melodic line with slurs and accents, and a bass line with a circled sharp sign. The bottom staff is empty.

Alleg.

Handwritten musical notation for the first system. The treble clef staff contains a series of notes and chords, including a half note with a flat (b) and a quarter note with a flat (b). The bass clef staff contains a series of notes and chords, including a half note with a flat (b) and a quarter note with a flat (b). A vertical bar line is present, and a small upward-pointing arrow is above the staff.

Handwritten musical notation for the second system. The treble clef staff contains a series of notes and chords, including a half note with a flat (b) and a quarter note with a flat (b). The bass clef staff contains a series of notes and chords, including a half note with a flat (b) and a quarter note with a flat (b). A vertical bar line is present, and a small upward-pointing arrow is above the staff.

Handwritten musical notation for the third system. The treble clef staff contains a series of notes and chords, including a half note with a flat (b) and a quarter note with a flat (b). The bass clef staff contains a series of notes and chords, including a half note with a flat (b) and a quarter note with a flat (b). A vertical bar line is present, and a small upward-pointing arrow is above the staff.

Handwritten musical notation for the fourth system. The treble clef staff contains a series of notes and chords, including a half note with a flat (b) and a quarter note with a flat (b). The bass clef staff contains a series of notes and chords, including a half note with a flat (b) and a quarter note with a flat (b). A vertical bar line is present, and a small upward-pointing arrow is above the staff.

Handwritten musical notation for the first system, featuring a treble clef, a key signature of one sharp (F#), and a 3/8 time signature. The notation includes several chords and melodic lines with accents and slurs. A large slur spans across the bottom of the system.

Handwritten musical notation for the second system, continuing the piece with similar notation to the first system, including chords and melodic lines with accents.

(rit + dim)

Handwritten musical notation for the third system, marked with "rit + dim". It features a treble clef, a key signature of one sharp, and a 3/8 time signature. The notation includes a circled "p" and various rhythmic markings.

(frei)

Handwritten musical notation for the fourth system, marked with "frei". It features a treble clef, a key signature of one sharp, and a 3/8 time signature. The notation includes a large slur, a circled "p", and a "CODA" marking.

♩ CODA (Tempo ①) accel. bis Presto

Handwritten musical notation for the first system. It features a treble clef with a circled 'p' and a circled '1'. The key signature has one sharp (F#). The melody consists of quarter notes with accents. The bass line has a wavy line and a circled '1'. The system ends with a double bar line and a fermata.

Handwritten musical notation for the second system. It features a treble clef with a circled 'p' and a circled '1'. The key signature has one sharp (F#). The melody consists of quarter notes with accents. The bass line has a wavy line and a circled '1'. The system ends with a double bar line and a fermata.

Handwritten musical notation for the third system. It features a treble clef with a circled 'p' and a circled '1'. The key signature has one sharp (F#). The melody consists of quarter notes with accents. The bass line has a wavy line and a circled '1'. The system ends with a double bar line and a fermata.

Handwritten musical notation for the fourth system. It features a treble clef with a circled 'p' and a circled '1'. The key signature has one sharp (F#). The melody consists of quarter notes with accents. The bass line has a wavy line and a circled '1'. The system ends with a double bar line and a fermata.

Presto

Handwritten musical notation for the first system, marked Presto. It features a treble clef with a circled key signature of three sharps (F#, C#, G#) and a bass clef. The right hand has a triplet of eighth notes followed by slurs. The left hand has a complex rhythmic pattern with various accidentals.

Handwritten musical notation for the second system, marked Presto. It features a treble clef with a circled key signature of three sharps and a bass clef. The right hand has a triplet of eighth notes followed by slurs. The left hand has a complex rhythmic pattern with various accidentals.

Prestissimo

Handwritten musical notation for the third system, marked Prestissimo. It features a treble clef with a circled key signature of three sharps and a bass clef. The right hand has a triplet of eighth notes followed by slurs. The left hand has a complex rhythmic pattern with various accidentals.

Pedal

Leuto

Handwritten musical notation for the fourth system, marked Leuto. It features a treble clef with a circled key signature of three sharps and a bass clef. The right hand has a triplet of eighth notes followed by slurs. The left hand has a complex rhythmic pattern with various accidentals.

tempo

The first system of handwritten musical notation consists of two staves. The top staff is in treble clef and the bottom staff is in bass clef. The music begins with a circled 'F#m' in the bass staff. The notation includes various note values, rests, and dynamic markings such as accents (^) and hairpins (\sim). The system concludes with a double bar line and the word 'Fine' written in a cursive hand.

(Allegro) (oder ruhig) Satz 2

The second system is labeled 'Satz 2' and includes the tempo marking '(Allegro) (oder ruhig)'. It features two staves. The top staff is in treble clef and the bottom staff is in bass clef. The notation includes notes, rests, and dynamic markings such as 'p' in circles and accents (^). The system ends with a double bar line.

The third system continues the musical piece on two staves. The top staff is in treble clef and the bottom staff is in bass clef. The notation includes notes, rests, and dynamic markings such as 'p' and accents (^). The system concludes with a double bar line.

Handwritten musical notation for the first system. The upper staff contains a melodic line with notes $b^{\flat}g^{\flat}$, f^{\sharp} , e^{\sharp} , d^{\sharp} , c^{\sharp} , b^{\flat} , a^{\flat} , g^{\flat} . The lower staff contains a bass line with notes $b^{\flat}g^{\flat}$ and a series of chords: $b^{\flat}g^{\flat}f^{\sharp}e^{\sharp}$, $d^{\sharp}c^{\sharp}b^{\flat}$, $a^{\flat}g^{\flat}f^{\sharp}$, $e^{\sharp}d^{\sharp}c^{\sharp}$, $b^{\flat}a^{\flat}g^{\flat}$. A wavy line is present above the second measure of the bass line.

Handwritten musical notation for the second system. The upper staff contains a melodic line with notes $b^{\flat}d^{\flat}$ and a wavy line. The lower staff contains a bass line with notes $b^{\flat}d^{\flat}$ and a series of chords: $b^{\flat}d^{\flat}c^{\sharp}b^{\flat}$, $a^{\flat}g^{\flat}f^{\sharp}$, $e^{\sharp}d^{\sharp}c^{\sharp}$, $b^{\flat}a^{\flat}g^{\flat}$, $f^{\sharp}e^{\sharp}d^{\sharp}$. A wavy line is present above the second measure of the bass line.

Handwritten musical notation for the third system. The upper staff contains a melodic line with notes d^{\flat} and a wavy line. The lower staff contains a bass line with notes d^{\flat} and a series of chords: $b^{\flat}d^{\flat}c^{\sharp}b^{\flat}$, $a^{\flat}g^{\flat}f^{\sharp}$, $e^{\sharp}d^{\sharp}c^{\sharp}$, $b^{\flat}a^{\flat}g^{\flat}$, $f^{\sharp}e^{\sharp}d^{\sharp}$. A wavy line is present above the second measure of the bass line.

Handwritten musical notation for the fourth system. The upper staff contains a melodic line with notes d^{\flat} and a wavy line. The lower staff contains a bass line with notes $b^{\flat}g^{\flat}$ and a series of chords: $b^{\flat}d^{\flat}c^{\sharp}b^{\flat}$, $a^{\flat}g^{\flat}f^{\sharp}$, $e^{\sharp}d^{\sharp}c^{\sharp}$, $b^{\flat}a^{\flat}g^{\flat}$, $f^{\sharp}e^{\sharp}d^{\sharp}$. A wavy line is present above the second measure of the bass line.

(immer langsamer werden)

sehr breit

(pesante)

(frei)

p

mp

Lunga

pp

Fin

Tempo ①

sehr ruhig

pp

3

Handwritten musical notation for the first system. The upper staff contains a melodic line with a slur over the first three measures and a fermata over the fourth. The lower staff contains a bass line with chords in the first three measures and a whole note in the fourth. A "GLISS" marking with a wavy line is present in the fourth measure of the upper staff.

Handwritten musical notation for the second system. The upper staff has a melodic line with a slur and a fermata. The lower staff has a bass line with chords. A "(git)" marking is present in the fourth measure of the upper staff.

sehr
Largo (♩) *breit*

Handwritten musical notation for the third system. The upper staff has a melodic line with a slur and a fermata. The lower staff has a bass line with chords. A circled "H" is in the first measure of the upper staff.

Mod. (♩) (vorwärts — drängend)

Handwritten musical notation for the fourth system. The upper staff has a melodic line with a slur and a fermata. The lower staff has a bass line with chords. A circled "H" is in the first measure of the upper staff.

quell.

Handwritten musical notation for the first system. The treble clef staff contains a melodic line with a 7th fret marking and a slur over a series of notes. The bass clef staff contains a chord progression with a circled sharp sign (#) and a slur over a series of notes.

Handwritten musical notation for the second system. The treble clef staff contains a melodic line with a circled sharp sign (#) and a slur over a series of notes. The bass clef staff contains a chord progression with a circled sharp sign (#) and a slur over a series of notes.

(wieder breit) (pesante)

Handwritten musical notation for the third system. The treble clef staff contains a melodic line with a circled sharp sign (#) and a slur over a series of notes. The bass clef staff contains a chord progression with a circled sharp sign (#) and a slur over a series of notes.

(Zeit DeCal ~~de~~ Frise)

Handwritten musical notation for the fourth system. The treble clef staff contains a melodic line with the text "düntritt" and a slur over a series of notes. The bass clef staff contains a chord progression with a circled sharp sign (#) and a slur over a series of notes.

Satz 3

Allegro agitato

Handwritten musical notation for piano. It features a treble clef and a bass clef. A circled 'H' is written between the staves, and a 4/4 time signature is written to the right.