

NOTENHEFT



4 Stücke für Orgel (oder Cembalo)
1966

leute (Achtel)

(P)

(Ruhige Achtel)

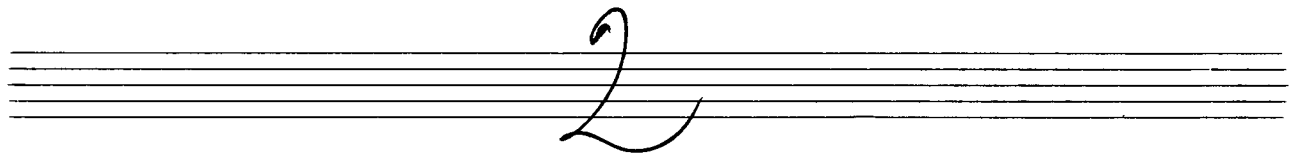
Fine

(P)

Handwritten musical notation for the first system, featuring a treble and bass staff. The notation includes various notes, rests, and accidentals, with a large slur over the top staff.

Handwritten musical notation for the second system, continuing the melodic and bass lines from the first system.

Handwritten musical notation for the third system, concluding with a double bar line and the instruction "2. + d.c. al Fine".

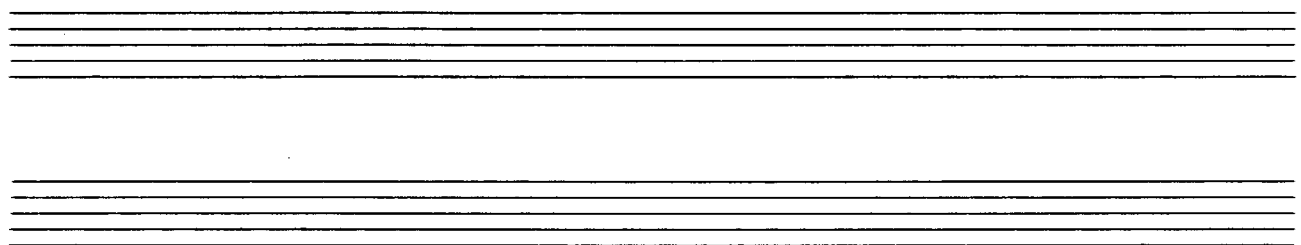


leute (Hornel)

Handwritten musical notation for the first system. The treble clef staff contains a 4/8 time signature and a circled 'p' dynamic marking. The bass clef staff contains a 7/8 time signature. The music consists of two measures, each with a slur over the upper staff and a corresponding chordal accompaniment in the lower staff. The first measure has a flat (b) above the slur, and the second measure has a sharp (#) above the slur.

Handwritten musical notation for the second system. The treble clef staff contains a 7/8 time signature. The bass clef staff contains a 7/8 time signature. The music consists of two measures, each with a slur over the upper staff and a corresponding chordal accompaniment in the lower staff. The first measure has a sharp (#) above the slur, and the second measure has a flat (b) above the slur.

Handwritten musical notation for the third system. The treble clef staff contains a 7/8 time signature. The bass clef staff contains a 7/8 time signature. The music consists of two measures, each with a slur over the upper staff and a corresponding chordal accompaniment in the lower staff. The first measure has a flat (b) above the slur, and the second measure has a flat (b) above the slur.



Handwritten musical notation for the first system. The treble clef staff contains a melodic line with notes and accidentals (flats and sharps). The bass clef staff contains a more complex accompaniment with many beamed notes and accidentals. A large slur spans across both staves.

Handwritten musical notation for the second system. It continues the melodic and accompanimental lines from the first system. The notation includes various rhythmic values and accidentals.

Handwritten musical notation for the third system. This system includes dynamic markings such as *pp* (pianissimo) and *p* (piano). The notation features a mix of melodic and accompanimental parts with various accidentals and slurs.

3

VIVACE

Handwritten musical notation for the first system. It consists of two staves: a treble clef staff and a bass clef staff. The time signature is 3/4, and the dynamic marking is *f*. The treble staff contains a melodic line with a slur and a fermata. The bass staff contains a bass line with a slur and a fermata.

Handwritten musical notation for the second system, continuing the melodic and bass lines from the first system. It features a treble clef staff and a bass clef staff with slurs and fermatas.

Handwritten musical notation for the third system, continuing the melodic and bass lines from the second system. It features a treble clef staff and a bass clef staff with slurs and fermatas.

Handwritten musical notation for the first system, featuring a treble and bass clef with various notes and rests.

Handwritten musical notation for the second system, continuing the piece with similar notation.

letzte mit # (12) (Maestoso (sehr langsam = breit))

Handwritten musical notation for the third system, including performance instructions like "Fine" and "roll Werk".

Handwritten musical notation for the fourth system, concluding the piece with dynamic markings like "p".

D.C.
ad
Fin

4

lento (Schitel)

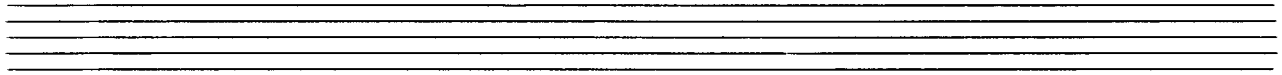
Handwritten musical notation for the first system. The treble staff contains a melodic line with notes G4, A4, Bb4, C5, and D5, with accidentals b, #, and b. The bass staff contains a bass line with notes G3, A3, Bb3, C4, and D4, with accidentals b and #. Dynamics include 'pp' and 'f'. A large slur covers the entire system.

Handwritten musical notation for the second system. The treble staff continues the melodic line with notes E5, D5, C5, and B4. The bass staff continues the bass line with notes E3, D3, C3, and B2. Dynamics include 'f' and 'p'. A large slur covers the entire system.

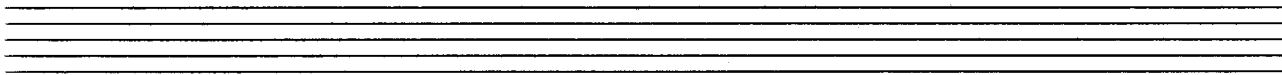
Handwritten musical notation for the third system. The treble staff features a complex melodic line with notes F5, E5, D5, C5, B4, A4, G4, and F4. The bass staff features a complex bass line with notes G3, F3, E3, D3, C3, B2, and A2. Dynamics include 'f' and 'p'. A large slur covers the entire system.

(letzte gut + r)

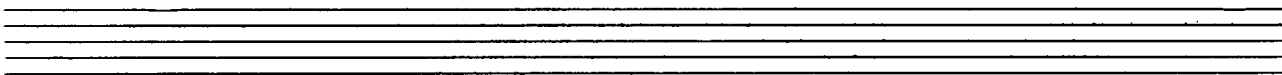
Handwritten musical notation for the fourth system. The treble staff concludes with notes G4, F4, E4, and D4. The bass staff concludes with notes G3, F3, E3, and D3. Dynamics include 'f' and 'p'. A large slur covers the entire system, ending with a double bar line and a fermata.



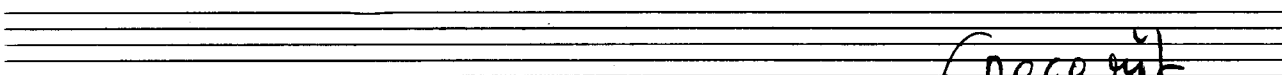
Handwritten musical notation for the first system. It consists of two staves. The upper staff is in treble clef and contains a melodic line with a slur over two measures. The lower staff is in bass clef and contains a chordal accompaniment with slurs and dynamic markings. A 4/8 time signature is written vertically on the left. The dynamic marking *pp* is written above the first measure.



Handwritten musical notation for the second system, consisting of two staves. The upper staff continues the melodic line with a slur. The lower staff continues the chordal accompaniment with slurs and dynamic markings.



Handwritten musical notation for the third system, consisting of two staves. The upper staff continues the melodic line with a slur. The lower staff continues the chordal accompaniment with slurs and dynamic markings.



Handwritten musical notation for the fourth system, consisting of two staves. The upper staff continues the melodic line with a slur. The lower staff continues the chordal accompaniment with slurs and dynamic markings. The word *poco più* is written in parentheses below the second staff. The system concludes with a double bar line and repeat dots.

D.C.
al
Fine