

L.v. BEETHOVEN



W.A. MOZART



NOTENHEFT

F. SCHUBERT



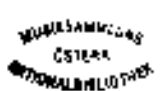
J. HAYDN



J. STRAUSS



Kleine Stücke für Jazzpiano —
Adolf Scherbaum

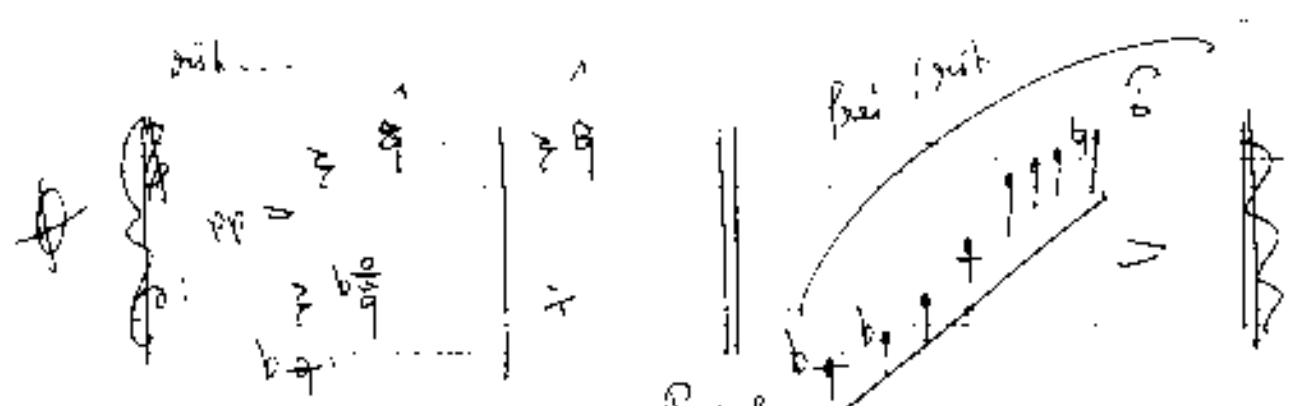
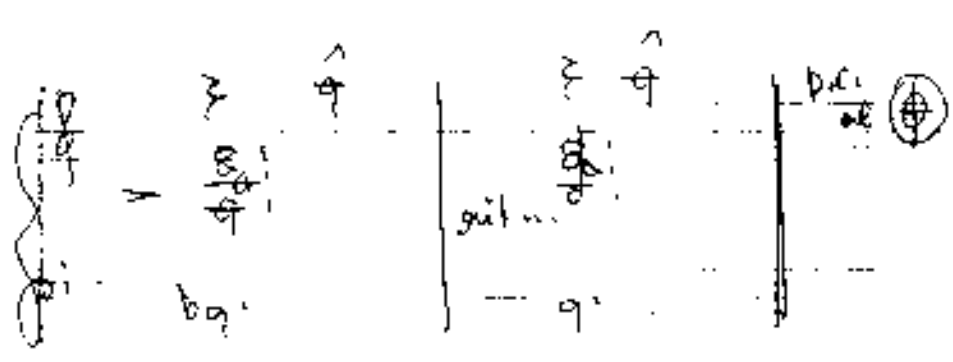
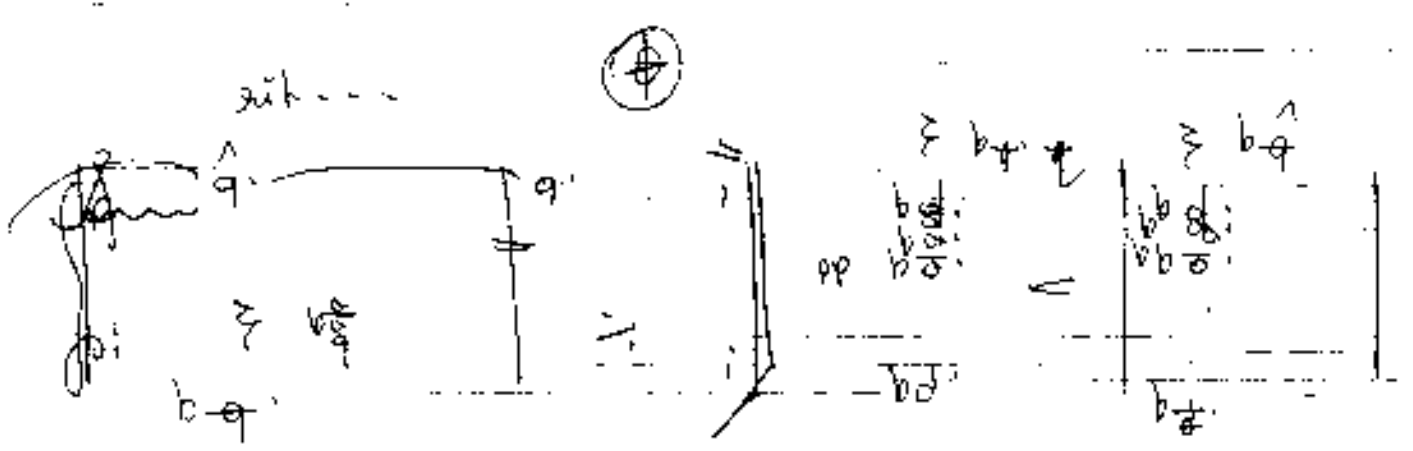
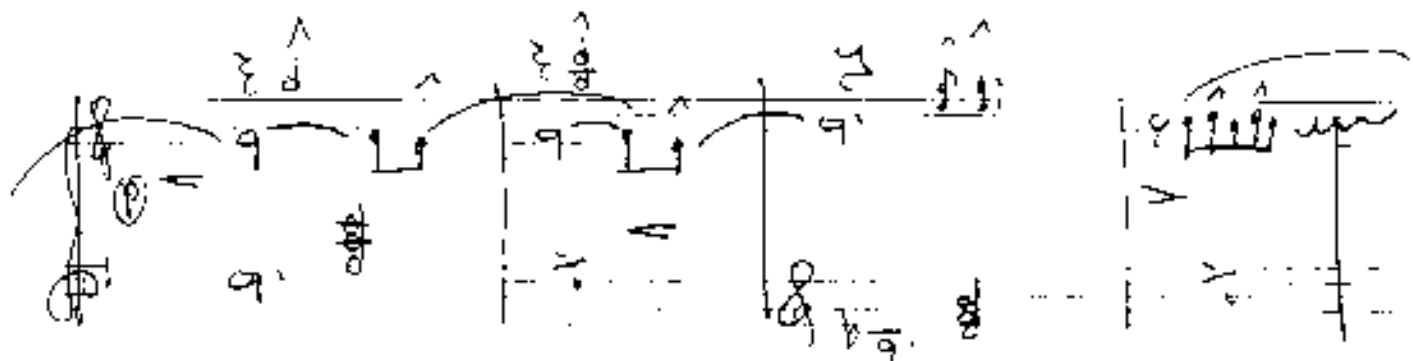


1

lento (pizz)

3/4 (p)

dim



Hand-drawn technical drawing showing a cross-section of a beam with a curved top surface. The drawing includes labels for dimensions and forces. A vertical force 'N' is shown acting on the right side. A horizontal force 'M' is shown acting on the top surface. A curved arrow indicates a moment. The top surface is labeled with 'N' and 'M'. The bottom surface is labeled with 'N' and 'M'. A vertical line is labeled 'N'. A circular symbol with a cross is labeled 'mit...'. A vertical line is labeled 'N'.

②

ruhig (frei)

Handwritten musical notation for the first system. It begins with a treble clef, a circled 'P', and a 3/4 time signature. The notation includes several notes with slurs and accents, and a double bar line.

Handwritten musical notation for the second system. It features a treble clef, a circled 'P', and complex rhythmic patterns with slurs and accents. A double bar line is present.

Handwritten musical notation for the third system. It includes a treble clef, a circled 'P', and notes with slurs and accents. A double bar line is present.

Handwritten musical notation for the fourth system. It features a treble clef, a circled 'P', and notes with slurs and accents. A double bar line is present.

Handwritten musical notation for the first system, featuring a treble clef and a bass clef with various notes and accidentals.

Handwritten musical notation for the second system, including the instruction "poco rit)" and "poco".

Handwritten musical notation for the second system, including the instruction "poco rit)" and "poco".

Handwritten musical notation for the third system, including the instruction "Lento (frei)".

Handwritten musical notation for the third system, including the instruction "Lento (frei)".

Handwritten musical notation for the fourth system, including the instruction "ad. rit. (abbreveren)".

Handwritten musical notation for the fourth system, including the instruction "ad. rit. (abbreveren)".

3

Mod. (approximato)

Handwritten musical notation for the first system. It begins with a treble clef, a 3/4 time signature, and a circled 'pp' dynamic marking. The notation includes several notes with accents (^) and rests, separated by vertical bar lines. A slur is placed over a group of notes in the second measure.

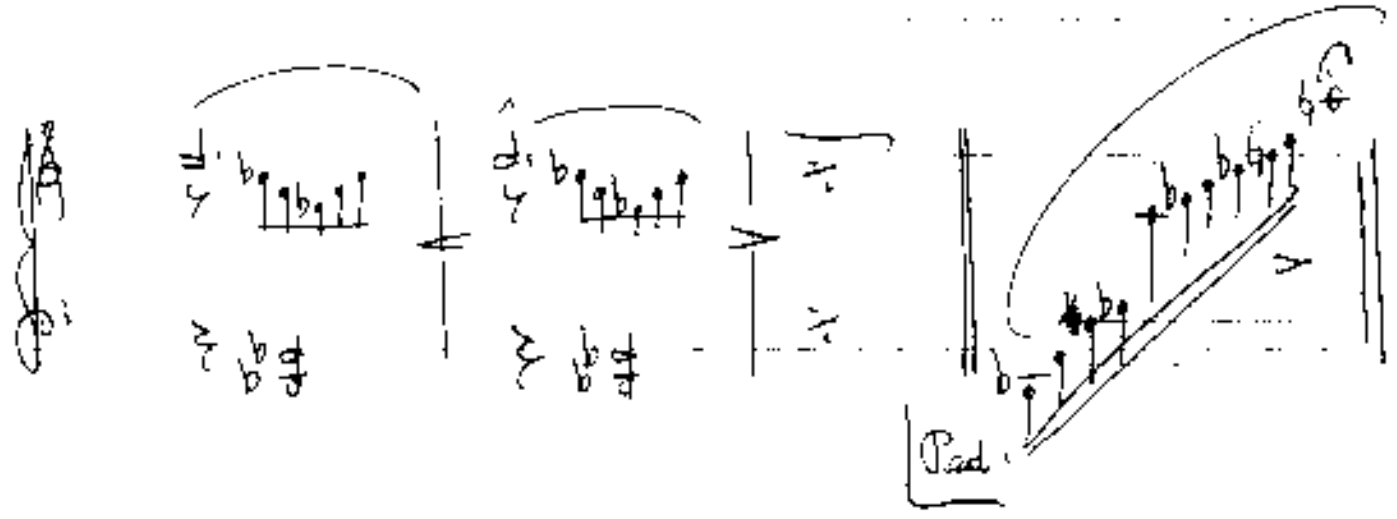
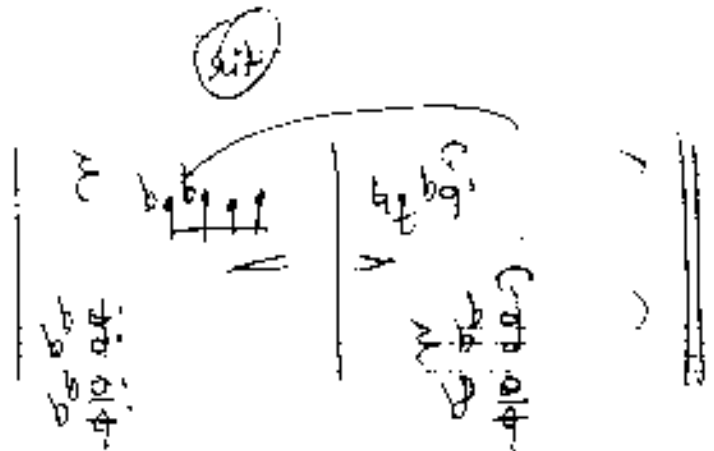
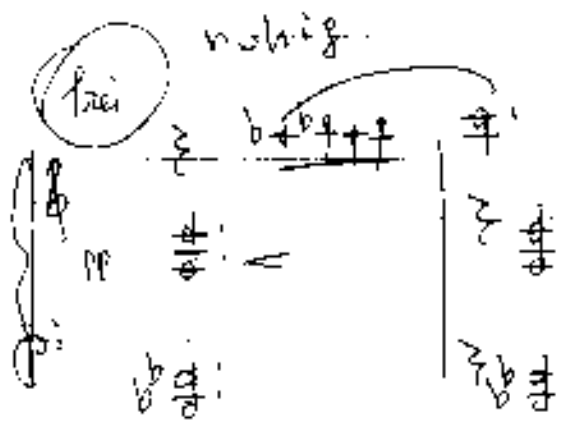
Handwritten musical notation for the second system. It continues with a treble clef and a 3/4 time signature. The notation features notes with accents (^) and rests, with a slur over a group of notes in the second measure.

Handwritten musical notation for the third system. It continues with a treble clef and a 3/4 time signature. The notation includes notes with accents (^) and rests, with a slur over a group of notes in the second measure.

rit — dim

wesentliche wichtiger

(poco rit)



(4)

Mod. —

Handwritten musical notation for the first system, featuring a treble and bass clef, a 4/4 time signature, and a piano (pp) dynamic marking. The melody is in the treble clef, and the bass line is in the bass clef. The key signature has two flats. The first measure has a piano (pp) dynamic marking. The melody consists of a series of eighth notes, and the bass line consists of a series of quarter notes. The system is divided into two measures by a bar line.

Handwritten musical notation for the second system, continuing the melody and bass line from the first system. The key signature remains two flats. The melody continues with eighth notes, and the bass line continues with quarter notes. The system is divided into two measures by a bar line.

Handwritten musical notation for the third system, continuing the melody and bass line. The key signature remains two flats. The melody continues with eighth notes, and the bass line continues with quarter notes. The system is divided into two measures by a bar line.

Handwritten musical notation for the fourth system, continuing the melody and bass line. The key signature changes to one flat. The melody continues with eighth notes, and the bass line continues with quarter notes. The system is divided into two measures by a bar line.

Handwritten musical notation for the fifth system, continuing the melody and bass line. The key signature remains one flat. The melody continues with eighth notes, and the bass line continues with quarter notes. The system is divided into two measures by a bar line.

poco rit)

Handwritten musical notation for a string quartet. The top staff is in treble clef and the bottom in bass clef. The music consists of two measures. The first measure has a dynamic marking of *f* and a tempo marking of *lento*. The second measure has a dynamic marking of *pp* and a tempo marking of *poco rit*. The notes are written on a five-line staff with stems and flags.

Lento

(rit)



Handwritten musical notation for a string quartet. The top staff is in treble clef and the bottom in bass clef. The music consists of two measures. The first measure has a dynamic marking of *f* and a tempo marking of *Lento*. The second measure has a dynamic marking of *pp* and a tempo marking of *(rit)*. The notes are written on a five-line staff with stems and flags.

breit (frei) rubato

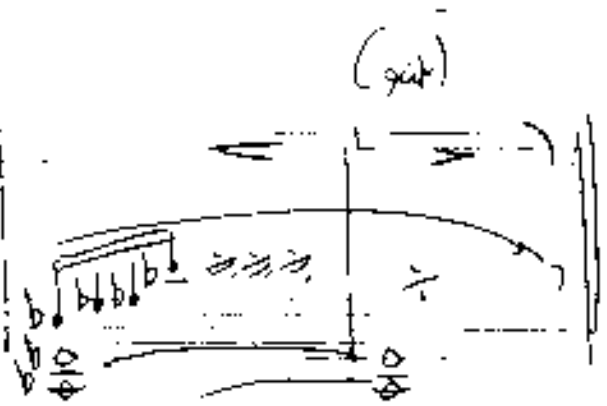
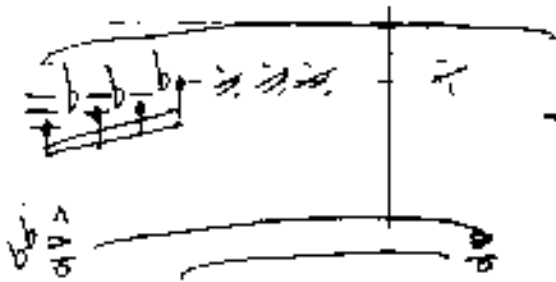
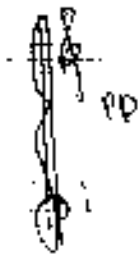
Handwritten musical notation for a string quartet. The top staff is in treble clef and the bottom in bass clef. The music consists of two measures. The first measure has a dynamic marking of *f* and a tempo marking of *breit (frei) rubato*. The second measure has a dynamic marking of *pp* and a tempo marking of *rit*. The notes are written on a five-line staff with stems and flags.

(poco rit)

Handwritten musical notation for a string quartet. The top staff is in treble clef and the bottom in bass clef. The music consists of two measures. The first measure has a dynamic marking of *f* and a tempo marking of *(poco rit)*. The second measure has a dynamic marking of *pp* and a tempo marking of *rit*. The notes are written on a five-line staff with stems and flags.

p.c. al





(guitar)



Handwritten notes and symbols, possibly indicating musical notation or technical specifications, including some symbols that look like 'C', 'D', and 'P'.



5

largo

— appassionato

Handwritten musical notation for the first system, featuring a treble clef, a key signature of one sharp (F#), and a 3/4 time signature. The music consists of two staves. The upper staff contains a series of chords with accents (^) and slurs. The lower staff contains a rhythmic accompaniment with notes and stems. A "dim" marking is present above the second measure.

Handwritten musical notation for the second system, continuing from the first. It includes a treble clef, a key signature of one sharp (F#), and a 3/4 time signature. The upper staff has chords with accents and slurs, and a circled "p" dynamic marking. The lower staff has a rhythmic accompaniment. A circled "ff" dynamic marking is at the end of the system.

Handwritten musical notation for the third system, continuing from the second. It includes a treble clef, a key signature of one sharp (F#), and a 3/4 time signature. The upper staff has chords with accents and slurs, and a circled "ff" dynamic marking. The lower staff has a rhythmic accompaniment. A "dim" marking is present above the second measure.

Handwritten musical notation for the fourth system, continuing from the third. It includes a treble clef, a key signature of one sharp (F#), and a 3/4 time signature. The upper staff has chords with accents and slurs, and a circled "p" dynamic marking. The lower staff has a rhythmic accompaniment.

Handwritten musical notation for the first system. The top staff (treble clef) contains a series of notes with accents (^) and a fermata. The bottom staff (bass clef) contains notes with accents (^) and a fermata. A circled 'P' is written below the first measure of the bottom staff.

Handwritten musical notation for the second system. The top staff (treble clef) contains notes with a fermata. The bottom staff (bass clef) contains notes with accents (^) and a fermata. A circled 'P' is written below the first measure of the bottom staff.

Handwritten musical notation for the third system. The top staff (treble clef) contains notes with accents (^) and a fermata. The bottom staff (bass clef) contains notes with accents (^) and a fermata. A circled 'P' is written below the first measure of the bottom staff. Below the system, the text "(2) x rit" is written. To the right, there are two circled symbols: "D. C." above "al" and a circled cross symbol.

