

L.V. BEETHOVEN



W.A. MOZART



NOTENHEFT

F. SCHUBERT



J. HAYDN



J. STRAUSS



MADE IN AUSTRIA

Teil [1]

10 Teile für Klavier (Hör) *Hör*
Scherbaum

Scherzstück

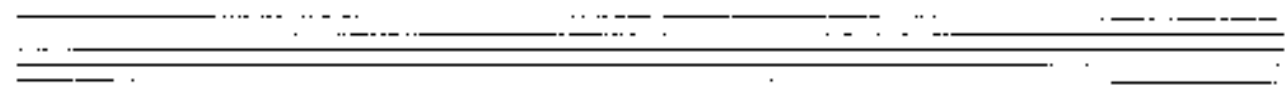
Handwritten musical notation for the first system. It features a grand staff with treble and bass clefs. The key signature has one sharp (F#). The time signature is 4/4. The piece begins with a piano (*pp*) dynamic. The right hand plays a melodic line with eighth and sixteenth notes, while the left hand provides a harmonic accompaniment with chords and moving lines. A *cresc.* marking is present in the right hand.

Handwritten musical notation for the second system. The notation continues from the first system. It includes a *cresc.* marking in the right hand. The piece concludes with a double bar line and repeat signs.

Handwritten musical notation for the third system. It continues the piece with various dynamics and articulations. A circled '1' is written in the top right corner. The system ends with a double bar line and repeat signs.

breit

gr. rit - - -



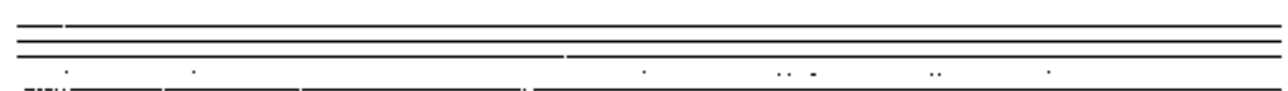
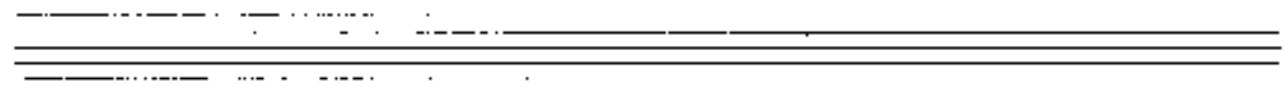
Teil I

sehr ruhig

tempo
okt. höher

pp

(wie eine Spieluhr)



gr. + rit. + dan = ppv

Fin

Tempo Oktave höher

ppp

(wie ein Horn)

Pedal bis D

Klingen lassen

D.C. al Fine

Teil III

(4+) sempre hast
mol fff

Fortissimo sempre hast + fff

Handwritten musical notation for the first system. It consists of two staves. The top staff has a treble clef and a 3/4 time signature. The bottom staff has a bass clef and a 2/2 time signature. The music is marked with accents (^) and dynamic markings (fff). A box containing 'fff' is written on the left side of the bottom staff. A circled number '1' is at the end of the system.

Handwritten musical notation for the second system. It consists of two staves. The top staff has a treble clef and a 3/4 time signature. The bottom staff has a bass clef and a 2/2 time signature. The music is marked with accents (^) and dynamic markings (fff). A circled number '2' is at the end of the system.

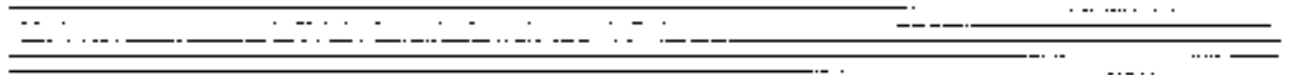
Handwritten musical notation for the third system. It consists of two staves. The top staff has a treble clef and a 3/4 time signature. The bottom staff has a bass clef and a 2/2 time signature. The music is marked with accents (^) and dynamic markings (fff). Performance instructions 'gliss' and 'pedale' are written on the left side of the bottom staff. A circled number '3' is at the end of the system.

Handwritten musical notation for the first system. It features a treble clef, a key signature of one sharp (F#), and a 3/4 time signature. The notation includes a melodic line with slurs and a bass line with chords and slurs. A circled number '3' is in the top right corner.

Handwritten musical notation for the second system. It features a bass clef and a 3/4 time signature. The notation includes a melodic line with slurs and a bass line with chords and slurs.

Handwritten musical notation for the third system. It features a bass clef and a 3/4 time signature. The notation includes a melodic line with slurs and a bass line with chords and slurs. A circled number '4' is in the top right corner.

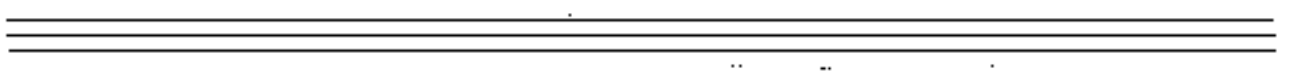
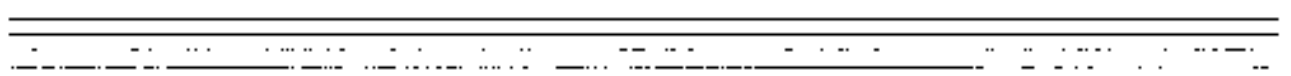
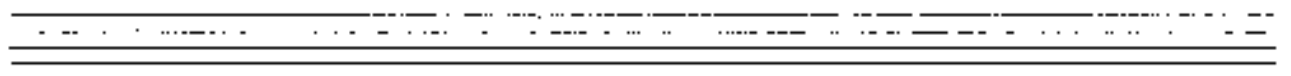
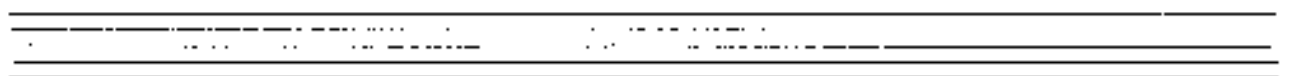
Handwritten musical notation for the fourth system. It features a bass clef and a 3/4 time signature. The notation includes a melodic line with slurs and a bass line with chords and slurs. Handwritten annotations include "Pedal", "Gliss", "Lange", and "Muttere". A circled number '4' is in the top right corner.



(Tocatta) Teil IV

so rasch wie möglich
KURZ wie möglich - sempre **ff**

6+ zu spielen
wie ein Trommelfeuer)
(monoton, hart)



①

Fin

letzte mal fort abreißen →

Teil II

breit *passato*

7777

Pedal bis

1

Ped.

2

Fine

de la zant (ruhig)

pp

Handwritten musical notation on a grand staff. The upper staff contains notes with dynamic markings *pp* and *f*. The lower staff contains a wavy line representing a tremolo or sustained texture. A circled number '3' is in the top right corner.

Handwritten musical notation on a grand staff. The upper staff features a melodic line with notes marked with *pp*, *b*, *+*, and *#*. The lower staff contains a rhythmic accompaniment with notes and rests. A large slur spans across both staves.

Handwritten musical notation on a grand staff. The upper staff has notes with *pp* and *#* markings. The lower staff features a melodic line with notes and rests, including a section with a wavy line.

Handwritten musical notation on a grand staff. The upper staff has notes with *pp* and *f* markings. The lower staff features a melodic line with notes and rests. The piece concludes with the text "D.C. al Fine" and "rit... + dim...".

Teil IV.

Sehr ruhig

Handwritten musical notation for the first system, consisting of two staves. The top staff is in treble clef and the bottom in bass clef. It features a key signature of one sharp (F#) and a 4/4 time signature. The music includes quarter notes, eighth notes, and rests, with various accidentals (sharps, naturals, flats) and slurs. A circled 'p' is written in the bass staff.

Handwritten musical notation for the second system, consisting of two staves. It continues the piece with similar notation to the first system, including slurs and accidentals.

Handwritten musical notation for the third system, consisting of two staves. The notation includes a fermata over the final note of the top staff and the word "FINE" written vertically on the right side.

seton Ruking (olue jede tempo admanakung)

Handwritten musical notation for the first system. The treble staff contains notes with slurs and accents. The bass staff contains notes with slurs and accents. A box around the first measure of the treble staff is labeled 'mp'. A handwritten note 'sempre beban' with an arrow points to the first measure of the bass staff.

Handwritten musical notation for the second system. The treble staff contains notes with slurs and accents. The bass staff contains notes with slurs and accents.

Handwritten musical notation for the third system. The treble staff contains notes with slurs and accents. The bass staff contains notes with slurs and accents. A dynamic marking 'p sempre din' is written below the bass staff.

Handwritten musical notation for the fourth system. The treble staff contains notes with slurs and accents. The bass staff contains notes with slurs and accents. Dynamic markings 'p' and 'pp' are present. The system ends with a double bar line and the initials 'D.C.'.

Teil VII

Presto (agitato)

betont gleichmäßig

The first system of handwritten musical notation consists of two staves. The upper staff is in treble clef with a key signature of one flat (B-flat) and a 3/4 time signature. It contains three measures of music, each with a slur over the notes. The lower staff is in bass clef and contains three measures of music, each with a slur over the notes. A box containing the number '77' is written in the first measure of the lower staff.

The second system of handwritten musical notation consists of two staves. The upper staff is in treble clef with a key signature of one flat (B-flat) and a 3/4 time signature. It contains three measures of music, each with a slur over the notes. The lower staff is in bass clef and contains three measures of music, each with a slur over the notes.

The third system of handwritten musical notation consists of two staves. The upper staff is in treble clef with a key signature of one flat (B-flat) and a 3/4 time signature. It contains three measures of music, each with a slur over the notes. The lower staff is in bass clef and contains three measures of music, each with a slur over the notes.

Handwritten musical notation for the first system. The top staff uses a treble clef and contains several measures of music with notes and accidentals. The bottom staff uses a bass clef and contains corresponding notes and accidentals. A circled number '1' is written above the final measure of the top staff.

Handwritten musical notation for the second system. The top staff uses a treble clef and shows rhythmic patterns with notes and accidentals. The bottom staff uses a bass clef and contains notes and accidentals. A sharp sign is visible at the beginning of the top staff.

Handwritten musical notation for the third system. The top staff uses a treble clef and contains complex rhythmic structures with notes and accidentals. The bottom staff uses a bass clef and contains notes and accidentals.

Handwritten musical notation for the fourth system. The top staff includes the instruction "ohne jedes rit" (without any ritardando) written above the staff. The system concludes with a double bar line and the word "Fine" written below the staff. The bottom staff contains notes and accidentals. There are additional handwritten notes and markings at the end of the system, including "D.C." and "mit".

Teil 8

Presto auf 1 Schlag (so rasch als möglich) 4 + 6 spielen ohne Feder
Nimpts 7777

Handwritten musical notation for the first system, consisting of two staves. The upper staff contains a melodic line with notes and rests, while the lower staff contains a bass line with notes and rests. There are several chords indicated by vertical lines and symbols like # and +.

Pedal bis

Handwritten musical notation for the second system, labeled "Pedal bis". It consists of two staves. A wavy line is drawn across the staves, indicating a sustained pedal effect. There are some notes and rests scattered throughout the system.

Handwritten musical notation for the third system, consisting of two staves. The notation includes notes, rests, and some symbols like # and +, similar to the first system.

ÜBER SAITEN

Handwritten musical notation for the fourth system, labeled "ÜBER SAITEN". It consists of two staves with notes and rests, continuing the musical piece.

Handwritten musical notation for the fifth system, consisting of two staves. The notation includes notes, rests, and symbols like # and +. There are several annotations in German: "Guss" (written twice), "leitet + lange verbindung", and "lassen". The system ends with a double bar line and a box containing a symbol.

Teil 9 + 10

Toccata pesante (And.)

1

2

3

4

Pedal

tr. No.

affacc.

P
Prestissimo
hantl

Handwritten musical notation for the first system. The treble clef staff has a 4/4 time signature and contains a melodic line with notes, accidentals, and slurs. The bass clef staff has a 2/2 time signature and contains a bass line with notes and slurs.

Handwritten musical notation for the second system, continuing the melodic and bass lines from the first system.

Handwritten musical notation for the third system, continuing the melodic and bass lines from the second system.

Handwritten musical notation for the fourth system, concluding the piece with a final cadence in both staves.

Handwritten musical notation for the first system, featuring a treble clef staff with a key signature of one sharp (F#) and a bass clef staff with a key signature of one flat (Bb). The treble staff contains a melodic line with eighth and sixteenth notes. The bass staff contains a bass line with a triplet of eighth notes and a quarter note.

Handwritten musical notation for the second system, featuring a treble clef staff with a key signature of one flat (Bb) and a bass clef staff with a key signature of one flat (Bb). The treble staff contains a melodic line with eighth and sixteenth notes. The bass staff contains a bass line with a half note and a quarter note.

Handwritten musical notation for the third system, featuring a treble clef staff with a key signature of one sharp (F#) and a bass clef staff with a key signature of one flat (Bb). The treble staff contains a melodic line with eighth and sixteenth notes. The bass staff is mostly empty.

Handwritten musical notation for the fourth system, featuring a treble clef staff with a key signature of one sharp (F#) and a bass clef staff with a key signature of one flat (Bb). The treble staff contains a melodic line with eighth and sixteenth notes. The bass staff contains a bass line with a half note and a quarter note.

Handwritten musical notation for the fifth system, featuring a treble clef staff with a key signature of one sharp (F#) and a bass clef staff with a key signature of one flat (Bb). The treble staff contains a melodic line with eighth and sixteenth notes. The bass staff contains a bass line with a half note and a quarter note.

Handwritten musical notation for the sixth system, featuring a treble clef staff with a key signature of one sharp (F#) and a bass clef staff with a key signature of one flat (Bb). The treble staff contains a melodic line with eighth and sixteenth notes. The bass staff contains a bass line with a half note and a quarter note.

Handwritten musical notation for the first system. The treble clef staff contains a melodic line with notes and accidentals. The bass clef staff contains chords and the instruction "x aldo".

Handwritten musical notation for the second system. The treble clef staff contains a melodic line. The bass clef staff contains chords and a "2" marking.

Handwritten musical notation for the third system. The treble clef staff contains a melodic line. The bass clef staff contains chords.

Handwritten musical notation for the fourth system. It includes a "Pedal listin" instruction, a treble clef staff with a melodic line, and a bass clef staff with chords and the instruction "perante".

1966
 Hoffmann