

Notenheft

Musik für
Kammerorchester
in 2 Teilen
1967

Adolf Scherbaum

Teil. I

(Anmerkung: alle Wiederholungen)

Presto

K
V
A
L
L
ER

Handwritten musical notation for the first system. The treble staff contains a melodic line with notes and rests, marked with accents (^) and dynamic markings 'p' and 'f'. The bass staff contains a bass line with notes and rests. The time signature is common time (C).

1

Handwritten musical notation for the second system. The treble staff continues the melodic line with notes and rests, marked with accents (^). The bass staff continues the bass line with notes and rests.

Handwritten musical notation for the third system. The treble staff contains notes and rests with accents (^). The bass staff features a large slur over a series of notes and rests, with some complex chordal structures indicated by multiple stems and notes. Dynamic markings 'p' and 'f' are present.

②

Handwritten musical notation for system 2. It features a treble clef staff with a circled 'H' and a bass clef staff with a circled 'H'. The treble staff contains a melodic line with various accidentals and a circled '2' above it. The bass staff contains a bass line with a circled 'H' and some rhythmic markings.

③

Handwritten musical notation for system 3. It features a treble clef staff with a circled 'H' and a bass clef staff with a circled 'H'. The treble staff contains a melodic line with various accidentals and a circled '3' above it. The bass staff contains a bass line with a circled 'H' and some rhythmic markings.

Handwritten musical notation for system 4. It features a treble clef staff with a circled 'H' and a bass clef staff with a circled 'H'. The treble staff contains a melodic line with various accidentals and a circled '4' above it. The bass staff contains a bass line with a circled 'H' and some rhythmic markings.

④

dim >

Handwritten musical notation for system 5. It features a treble clef staff with a circled 'H' and a bass clef staff with a circled 'H'. The treble staff contains a melodic line with various accidentals and a circled '4' above it. The bass staff contains a bass line with a circled 'H' and some rhythmic markings.

Handwritten musical notation on a grand staff. The upper staff contains a melodic line with various accidentals (sharps, naturals) and slurs. The lower staff contains a bass line with notes and rests. A circled *pp* dynamic marking is present, along with the handwritten instruction *sempre cres...*.

Handwritten musical notation on a grand staff. The upper staff features a melodic line with a box containing the number '5' above it. The lower staff contains a bass line. Dynamics include *mf*, *f*, and *ordin*.

Handwritten musical notation on a grand staff. The upper staff contains a melodic line with a circled *pp* dynamic marking. The lower staff contains a bass line with notes and rests. A box containing the number '6' is located at the top right of the system.

Handwritten musical notation on a grand staff. The upper staff contains a melodic line with notes and rests. The lower staff contains a bass line with notes and rests. A circled *pp* dynamic marking is present. A box containing the number '7' is located at the top right of the system.

sempre cresc.

8

9

10

11

Handwritten musical notation for measures 71-72. Measure 71 features a treble clef with a circled sharp sign (F#) and a bass clef with a circled sharp sign (F#). Measure 72 features a bass clef with a circled sharp sign (F#) and a circled sharp sign (F#) below the staff.

Handwritten musical notation for measures 73-74. Measure 73 features a treble clef with a circled sharp sign (F#) and a circled sharp sign (F#) below the staff. Measure 74 features a treble clef with a circled sharp sign (F#) and a circled sharp sign (F#) below the staff.

Handwritten musical notation for measures 75-76. Measure 75 features a treble clef with a circled sharp sign (F#) and a circled sharp sign (F#) below the staff. Measure 76 features a treble clef with a circled sharp sign (F#) and a circled sharp sign (F#) below the staff.

rit pp

Handwritten musical notation for the first system. The top staff is a treble clef with a series of eighth notes, some beamed together and some with '+' signs above them. The bottom staff is a bass clef with a few notes, including a circled 'D' and some accidentals.

Handwritten musical notation for the second system. The top staff continues the eighth-note pattern from the first system. The bottom staff has a few notes, including a sharp sign and a circled 'D'.

Handwritten musical notation for the third system. The top staff continues the eighth-note pattern. The bottom staff has a few notes, including a sharp sign and a circled 'D'.

Handwritten musical notation for the fourth system. The top staff continues the eighth-note pattern. The bottom staff has a few notes, including a sharp sign and a circled 'D'. A circled '15' is written in the right margin.

Handwritten musical notation on a grand staff. The top staff is labeled "Solo to heart" with a curved line above it. The music begins with a thick black bar across both staves, followed by a treble clef and a key signature of one sharp (F#). The melody in the treble clef consists of quarter and eighth notes, with some notes beamed together. The bass clef part features a series of chords, many of which are marked with a plus sign (+) below them. The system concludes with a double bar line.

Handwritten musical notation on a grand staff, marked with a circled number 26. The treble clef part continues the melody with various note values and rests. The bass clef part continues with chords, some marked with plus signs (+). The system ends with a double bar line.

Handwritten musical notation on a grand staff, marked with a circled number 27. The treble clef part features a more complex rhythmic pattern with many eighth notes. The bass clef part continues with chords, some marked with plus signs (+). The system ends with a double bar line.

Handwritten musical score for system 18. The system consists of two staves. The upper staff is in treble clef with a key signature of one sharp (F#) and a 4/4 time signature. It contains a melodic line with various ornaments, including grace notes and slurs. The lower staff is in bass clef and contains a bass line with chords and some rhythmic markings. A circled number '18' is located in the upper right area of the system.

Handwritten musical score for system 19. The system consists of two staves. The upper staff is in treble clef with a key signature of one sharp (F#) and a 4/4 time signature. It contains a melodic line with various ornaments, including grace notes and slurs. The lower staff is in bass clef and contains a bass line with chords and some rhythmic markings. A circled number '19' is located in the upper right area of the system.

Handwritten musical score for system 20. The system consists of two staves. The upper staff is in treble clef with a key signature of one sharp (F#) and a 4/4 time signature. It contains a melodic line with various ornaments, including grace notes and slurs. The lower staff is in bass clef and contains a bass line with chords and some rhythmic markings. A circled number '20' is located in the upper right area of the system.

Handwritten musical score for system 21. The system consists of two staves. The upper staff is in treble clef with a key signature of one sharp (F#) and a 4/4 time signature. It contains a melodic line with various ornaments, including grace notes and slurs. The lower staff is in bass clef and contains a bass line with chords and some rhythmic markings. A circled number '21' is located in the upper right area of the system. The word 'dim' with a wedge-shaped accent is written in the lower left of the system.

20 *empire over*

Handwritten musical score for measures 20-21. The top staff is in treble clef with a key signature of one sharp (F#) and a common time signature. It contains a melodic line with slurs and accents. The bottom staff is in bass clef with a key signature of one sharp and a common time signature, containing a bass line with slurs and accents. A circled '20' is at the start and a circled '21' is above the second measure of the top staff.

21 *die die*

Handwritten musical score for measures 21-22. The top staff is in treble clef with a key signature of one sharp (F#) and a common time signature. It contains a melodic line with slurs and accents. The bottom staff is in bass clef with a key signature of one sharp and a common time signature, containing a bass line with slurs and accents. A circled '21' is above the first measure of the top staff and a circled '22' is above the second measure. The lyrics "die die" are written below the bottom staff.

22

Handwritten musical score for measures 22-23. The top staff is in treble clef with a key signature of one sharp (F#) and a common time signature. It contains a melodic line with slurs and accents. The bottom staff is in bass clef with a key signature of one sharp and a common time signature, containing a bass line with slurs and accents. A circled '22' is at the end of the top staff and a circled '23' is at the end of the bottom staff.

23

Handwritten musical score for measures 23-24. The top staff is in treble clef with a key signature of one sharp (F#) and a common time signature. It contains a melodic line with slurs and accents. The bottom staff is in bass clef with a key signature of one sharp and a common time signature, containing a bass line with slurs and accents. A circled '23' is at the end of the top staff and a circled '24' is at the end of the bottom staff.

Part 2 Teil 2

Adagio (sehr langsam und ruhig)

Handwritten musical notation for the first system. The top staff is in treble clef and the bottom staff is in bass clef. The music consists of several measures with notes, rests, and dynamic markings. A circled 'p' is written on the left side of the first staff. There are also some handwritten annotations like '4' and '4' near the first staff.

Handwritten musical notation for the second system. The top staff is in treble clef and the bottom staff is in bass clef. The music features notes, rests, and dynamic markings. A circled '2' is written at the end of the first staff. The word 'diu' is written below the second staff with an accent mark above it.

Handwritten musical notation for the third system. The top staff is in treble clef and the bottom staff is in bass clef. The music features notes, rests, and dynamic markings. A circled '3' is written at the end of the first staff. The word 'diu' is written below the second staff with an accent mark above it.

breit

Handwritten musical notation for system 3, measures 1-2. The system consists of two staves. The upper staff is in treble clef with a circled sharp sign (#) below it. The lower staff is in bass clef. The music features complex rhythmic patterns with many beamed notes and slurs. A circled number '3' is located at the end of the system.

Handwritten musical notation for system 4, measures 3-4. The system consists of two staves. The upper staff is in treble clef and the lower staff is in bass clef. The music continues with complex rhythmic patterns and slurs. A circled number '4' is located at the end of the system.

Handwritten musical notation for system 5, measures 5-6. The system consists of two staves. The upper staff is in treble clef and the lower staff is in bass clef. The music continues with complex rhythmic patterns and slurs. A circled number '5' is located at the end of the system.

Handwritten musical notation for system 6, measures 7-8. The system consists of two staves. The upper staff is in treble clef and the lower staff is in bass clef. The music continues with complex rhythmic patterns and slurs. A circled number '6' is located at the end of the system.

Handwritten musical notation for measures 6 and 7. Measure 6 is marked with a circled '6' and measure 7 with a circled '7'. The notation includes treble and bass staves with notes, rests, and dynamic markings such as *pp* and *mf*. There are also some handwritten annotations like a plus sign and a cross.

Handwritten musical notation for measure 8, marked with a circled '8'. The notation includes treble and bass staves with notes, rests, and dynamic markings such as *mf* and *diu*. There are also some handwritten annotations like a circled 'ff' and a cross.

Handwritten musical notation for measure 9, marked with a circled '9'. The notation includes treble and bass staves with notes, rests, and dynamic markings such as *pp*, *mf*, and *ff*. There are also some handwritten annotations like a circled 'ff' and a cross.

preit (approximate)

10

11

12

pesante

13

Adagio

Handwritten musical notation for measures 14-15. The top staff is in treble clef with a circled *pp* dynamic marking. The bottom staff is in bass clef. Measure 14 contains a melodic line with a slur and a dotted quarter note, and a bass line with a dotted quarter note. Measure 15 continues the melodic line with a slur and a dotted quarter note, and a bass line with a dotted quarter note. A circled **14** is in the top right corner.

Handwritten musical notation for measures 16-17. The top staff is in treble clef with a circled *f* dynamic marking. The bottom staff is in bass clef. Measure 16 contains a melodic line with a slur and a dotted quarter note, and a bass line with a dotted quarter note. Measure 17 contains a melodic line with a slur and a dotted quarter note, and a bass line with a dotted quarter note. A circled **16** is in the top right corner.

Handwritten musical notation for measures 18-19. The top staff is in treble clef with a circled *pp* dynamic marking. The bottom staff is in bass clef. Measure 18 contains a melodic line with a slur and a dotted quarter note, and a bass line with a dotted quarter note. Measure 19 contains a melodic line with a slur and a dotted quarter note, and a bass line with a dotted quarter note. A circled **18** is in the top left corner.

Handwritten musical notation for measures 20-21. The top staff is in treble clef with a circled *f* dynamic marking. The bottom staff is in bass clef. Measure 20 contains a melodic line with a slur and a dotted quarter note, and a bass line with a dotted quarter note. Measure 21 contains a melodic line with a slur and a dotted quarter note, and a bass line with a dotted quarter note. A circled **20** is in the top right corner.

Handwritten musical score for measures 17-19. The system consists of two staves. Measure 17 starts with a circled *pp* dynamic marking. The notation includes various chords and melodic lines with slurs and accents. Measure 18 features a circled *f* dynamic marking. Measure 19 ends with a circled measure number 17 in the right margin.

Handwritten musical score for measures 20-22. The system consists of two staves. Measure 20 is marked with the word *Appassionato* and a circled *ff* dynamic marking. The notation includes complex chords and melodic lines with slurs and accents. Measure 21 has a circled *ff* dynamic marking. Measure 22 ends with a circled measure number 17 in the right margin.

Handwritten musical score for measures 23-25. The system consists of two staves. Measure 23 is marked with the word *dim*. The notation includes complex chords and melodic lines with slurs and accents. Measure 24 has a circled *pp* dynamic marking. Measure 25 ends with a circled measure number 17 in the right margin.

Handwritten musical score for measures 26-28. The system consists of two staves. Measure 26 starts with a circled *pp* dynamic marking. The notation includes complex chords and melodic lines with slurs and accents. Measure 27 has a circled *pp* dynamic marking. Measure 28 ends with a circled measure number 17 in the right margin.

Handwritten musical notation on a grand staff. The notation includes notes, rests, and dynamic markings such as *pp* and *ppp*. There are also some scribbles and a circled note in the upper right. The word "FIN" is written at the end of the piece. A large bracket is drawn under the lower staff, spanning from the second measure to the fourth measure.

Teil (3)

Prestissimo

Handwritten musical notation for the first system. The treble staff contains a series of notes with slurs and accents, including a circled '1' at the end. The bass staff contains notes with slurs and accents. A circled 'fff' is written next to the text 'hant (auf 1 Schlag)!!'. A circled '1' is also present in the upper right corner of the system.

Handwritten musical notation for the second system. The treble staff contains notes with slurs and accents, including a circled '2' at the end. The bass staff contains notes with slurs and accents. The text 'hant' is written below the bass staff.

Handwritten musical notation for the third system. The treble staff contains notes with slurs and accents, including a circled '2' at the end. The bass staff contains notes with slurs and accents.

Handwritten musical notation for system 3. The system consists of two staves. The top staff is in treble clef with a key signature of one sharp (F#) and a 5/4 time signature. It contains a melodic line with slurs and accents. The bottom staff is in bass clef and contains a series of eighth notes. A circled number '3' is in the top right corner.

Handwritten musical notation for system 4. The system consists of two staves. The top staff is in treble clef with a key signature of one sharp (F#) and a 5/4 time signature. It contains a melodic line with slurs and accents. The bottom staff is in bass clef and contains a series of eighth notes. A circled number '4' is in the top right corner.

Handwritten musical notation for system 5. The system consists of two staves. The top staff is in treble clef with a key signature of one sharp (F#) and a 5/4 time signature. It contains a melodic line with slurs and accents. The bottom staff is in bass clef and contains a series of eighth notes. A circled number '5' is in the top right corner.

Hand

6

7

8

9

Handwritten musical score for measures 10 and 11. The notation is on two staves. The key signature has two sharps (F# and C#). Measure 10 shows a melodic line in the upper staff and a bass line in the lower staff. Measure 11 continues the melodic line with a slur and a fermata. A circled number '10' is in the top right corner.

Handwritten musical score for measures 11 and 12. The notation is on two staves. The key signature has two sharps. Measure 11 features a melodic line with a slur and a fermata, and a bass line with a slur and a fermata. A circled number '11' is in the top left, and the text "crescendo" is written above the staff. A circled 'p' with an arrow points to the beginning of the bass line. Measure 12 continues the melodic line with a slur and a fermata, and the bass line with a slur and a fermata. A circled number '12' is in the top right corner.

Handwritten musical score for measures 12 and 13. The notation is on two staves. The key signature has two sharps. Measure 12 features a melodic line with a slur and a fermata, and a bass line with a slur and a fermata. Measure 13 continues the melodic line with a slur and a fermata, and the bass line with a slur and a fermata. A circled number '12' is in the top right corner.

Handwritten musical score for measures 11 and 12. The system consists of two staves. The upper staff is in treble clef with a key signature of one sharp (F#). It contains melodic lines with slurs and accents. The lower staff is in bass clef and contains a complex accompaniment with many beamed notes and slurs. A circled measure number '11' is at the beginning of the first staff.

Handwritten musical score for measures 13 and 14. The system consists of two staves. The upper staff is in treble clef with a key signature of one sharp (F#). It contains melodic lines with slurs and accents. The lower staff is in bass clef and contains a complex accompaniment with many beamed notes and slurs. A circled measure number '13' is at the end of the first staff.

Handwritten musical score for measures 15 and 16. The system consists of two staves. The upper staff is in treble clef with a key signature of one sharp (F#). It contains melodic lines with slurs and accents. The lower staff is in bass clef and contains a complex accompaniment with many beamed notes and slurs. A circled measure number '15' is at the end of the first staff. The instruction "subito" is written above the first staff, and "sempre cresc." with an arrow is written above the second staff.

Handwritten musical score for measures 17 and 18. The system consists of two staves. The upper staff is in treble clef with a key signature of one sharp (F#). It contains melodic lines with slurs and accents. The lower staff is in bass clef and contains a complex accompaniment with many beamed notes and slurs. A circled measure number '17' is at the end of the first staff. The instruction "Cresc." with an arrow is written below the second staff.

Handwritten musical score for measures 16-17. The system consists of two staves. The top staff is in treble clef with a circled key signature of two sharps (F# and C#). The bottom staff is in bass clef. Measure 16 shows a melodic line in the treble and a bass line with a circled '16'. Measure 17 continues the melodic line and features a circled '17'.

Handwritten musical score for measures 18-19. The system consists of two staves. The top staff is in treble clef with a circled key signature of two sharps (F# and C#). The bottom staff is in bass clef. Measure 18 shows a melodic line in the treble and a bass line with a circled '18'. Measure 19 continues the melodic line and features a circled '19'.

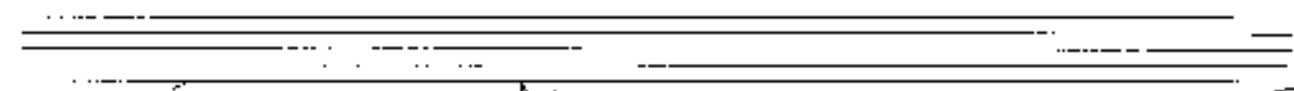
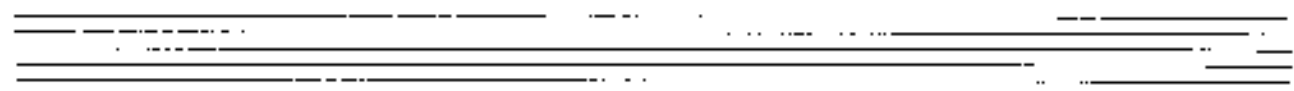
Handwritten musical score for measures 20-21. The system consists of two staves. The top staff is in treble clef with a circled key signature of two sharps (F# and C#). The bottom staff is in bass clef. Measure 20 shows a melodic line in the treble and a bass line with a circled '20'. Measure 21 continues the melodic line and features a circled '21'.

19

20

21

22



(wie ein Choral)

23

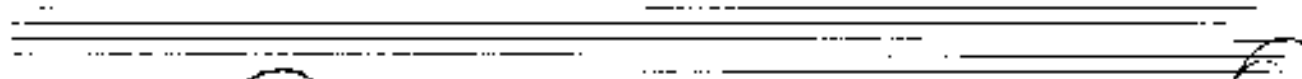
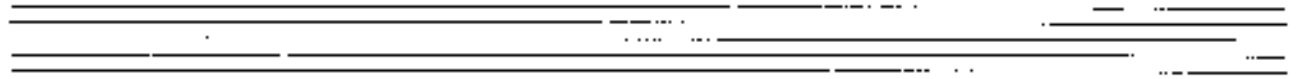
24

25

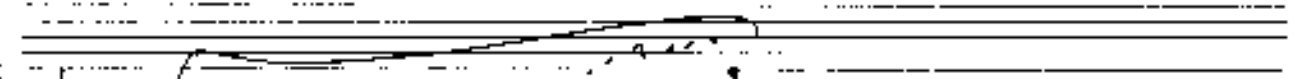
Handwritten musical score for the first system. The top staff is labeled "Soprano" and "Hand". It features a treble clef, a key signature of one sharp (F#), and a 4/4 time signature. The music includes complex chords with multiple sharps and accidentals, and a melodic line with slurs. A circled number "26" is in the upper right corner. The bottom staff shows a bass clef with a key signature of one sharp and a 3/4 time signature, with notes and accidentals.

Handwritten musical score for the second system. The top staff has a treble clef, a key signature of one sharp, and a 4/4 time signature. It contains complex chords and a melodic line with slurs. The bottom staff has a bass clef, a key signature of one sharp, and a 4/4 time signature, with notes and accidentals.

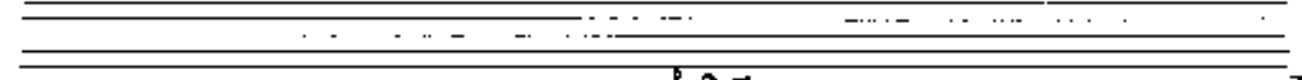
Handwritten musical score for the third system. The top staff has a treble clef, a key signature of one sharp, and a 4/4 time signature. It contains complex chords and a melodic line with slurs. The bottom staff has a bass clef, a key signature of one sharp, and a 4/4 time signature, with notes and accidentals.



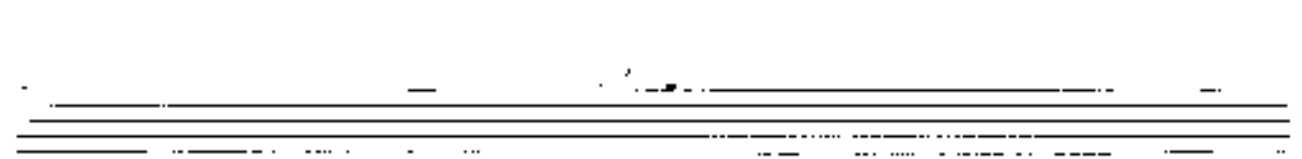
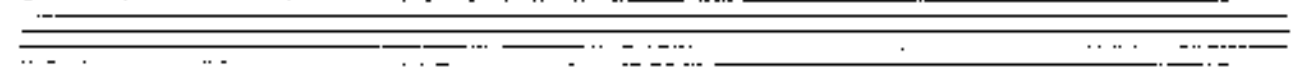
Handwritten musical notation for system 28. The system consists of two staves. The upper staff is in treble clef and contains three measures of music with notes beamed together and slurs. The lower staff is in bass clef and contains three measures of music with notes and rests. A circled number '28' is in the top right corner.



Handwritten musical notation for system 29. The system consists of two staves. The upper staff is in treble clef and contains two measures of music with notes and slurs. The lower staff is in bass clef and contains two measures of music with notes and rests. The word 'hart' is written on the left side. A circled number '29' is in the top right corner.



Handwritten musical notation for system 30. The system consists of two staves. The upper staff is in treble clef and contains two measures of music with notes and slurs. The lower staff is in bass clef and contains two measures of music with notes and rests. A circled number '30' is in the top right corner.



31

hant

32

33

34

Handwritten musical notation on two staves. The top staff has a circled key signature of three sharps (F#, C#, G#) and a circled number 8. The bottom staff has a circled key signature of three sharps (F#, C#, G#) and a circled number 5. The notation includes notes, rests, and dynamic markings.

35

Handwritten musical notation on two staves. The top staff has a circled key signature of three sharps (F#, C#, G#) and the word "pesante" written above it. The bottom staff has a circled key signature of three sharps (F#, C#, G#) and the word "pesante" written below it. There are various annotations, including "breit" and "assonci", and a circled number 36 in the top right corner.

36

Handwritten musical notation on two staves. The top staff has a circled key signature of three sharps (F#, C#, G#) and the word "trist" written below it. The bottom staff has a circled key signature of three sharps (F#, C#, G#) and the word "trist" written below it. There are various annotations, including "81" and "1967".