

Musik für  
Klaviersolo  
in 3 Teilen  
1967

Adolf Scherbaum

Teil. I

(Anmerkung:  
alle Wiederholungen)

Presto

K  
L  
V  
A  
EA

②

Handwritten musical notation for the first system, measures 1-4. The right hand has a treble clef and contains a complex melodic line with many accidentals and slurs. The left hand has a bass clef and contains a bass line with a circled sharp sign and some chordal figures.

Handwritten musical notation for the second system, measures 5-8. The right hand continues the melodic line with slurs and accents. The left hand has a bass clef and contains a bass line with a circled sharp sign and some chordal figures.

Handwritten musical notation for the third system, measures 9-12. The right hand has a treble clef and contains a complex melodic line with many accidentals and slurs. The left hand has a bass clef and contains a bass line with a circled sharp sign and some chordal figures.

④

Handwritten musical notation for the fourth system, measures 13-16. The right hand has a treble clef and contains a complex melodic line with many accidentals and slurs. The left hand has a bass clef and contains a bass line with a circled sharp sign and some chordal figures.

Handwritten musical score for the first system. The treble clef staff contains a melodic line with notes, accidentals (sharps), and slurs. The bass clef staff contains a bass line with notes and accidentals. A dynamic marking  $(pp)$  is circled, followed by the instruction *sempre cresc...*. There are also some handwritten annotations like  $\hat{}$  above notes.

Handwritten musical score for the second system. The treble clef staff features a melodic line with a slur and a dynamic marking  $mf =$ . The bass clef staff has a bass line with notes and accidentals. A dynamic marking  $f$  is present, along with the instruction *dir*. A circled number  $5$  is written above the treble staff.

Handwritten musical score for the third system. The treble clef staff has a melodic line with notes and slurs, and a dynamic marking  $pp$ . The bass clef staff contains a bass line with notes and slurs. A circled number  $6$  is written to the right of the system.

Handwritten musical score for the fourth system. The treble clef staff has a melodic line with notes and slurs, and a dynamic marking  $(pp)$ . The bass clef staff contains a bass line with notes and slurs. A circled number  $7$  is written to the right of the system.

*sempre cresc. ---*

Handwritten musical notation for the first system, measures 71-72. The treble clef staff contains eighth notes with accents and slurs. The bass clef staff contains a whole rest followed by a chord marked with a circled sharp sign and the letters 'A/O'.

Handwritten musical notation for the second system, measures 73-74. The treble clef staff contains eighth notes with accents and slurs. The bass clef staff contains a whole rest followed by a chord marked with a circled sharp sign and the letters 'A/O'.

Handwritten musical notation for the third system, measures 75-76. The treble clef staff contains eighth notes with accents and slurs. The bass clef staff contains a whole rest followed by a chord marked with a circled sharp sign and the letters 'A/O'.

Subito pp

Handwritten musical notation for the first system. The right hand has a treble clef and a series of eighth notes with stems pointing down, some beamed together. The left hand has a bass clef and rests in the first two measures, followed by a triplet of eighth notes in the third measure. A circled 'pp' is written in the first measure of the left hand.

Handwritten musical notation for the second system. The right hand continues with eighth notes. The left hand has a bass clef and a whole note chord (F# and C) in the first measure, followed by a whole note chord (F and C) in the second measure, and rests in the third measure.

Handwritten musical notation for the third system. The right hand continues with eighth notes. The left hand has a bass clef and a triplet of eighth notes in the first measure, followed by a whole note chord (F# and C) in the second measure, and rests in the third measure. A circled 'pp' is written in the first measure of the left hand.

Handwritten musical notation for the fourth system. The right hand continues with eighth notes. The left hand has a bass clef and a whole note chord (F# and C) in the first measure, followed by a whole note chord (F and C) in the second measure, and rests in the third measure. A circled '15' is written in the third measure of the right hand.



Subito  
moor

16

17

Handwritten musical score for measures 18 and 19. Measure 18 features a treble clef with a key signature of one sharp (F#) and a common time signature. The right hand has a complex melodic line with many accidentals and slurs. The left hand has a bass clef with a common time signature and a few notes. A circled '18' is above the staff.

Handwritten musical score for measures 19 and 20. Measure 19 continues the melodic line in the right hand. Measure 20 shows a treble clef with a key signature of one sharp (F#) and a common time signature. The right hand has a melodic line with slurs and accents. The left hand has a bass clef with a common time signature and a few notes. A circled '19' is to the right of the staff.

Handwritten musical score for measures 20 and 21. Measure 20 features a treble clef with a key signature of one sharp (F#) and a common time signature. The right hand has a complex melodic line with many accidentals and slurs. The left hand has a bass clef with a common time signature and a few notes. A circled '20' is to the right of the staff.

Handwritten musical score for measures 21 and 22. Measure 21 features a treble clef with a key signature of one sharp (F#) and a common time signature. The right hand has a melodic line with slurs and accents. The left hand has a bass clef with a common time signature and a few notes. A circled '21' is to the right of the staff.

(20) *Tempo cresc.*

Handwritten musical notation for the first system. It consists of two staves. The top staff is in treble clef and the bottom in bass clef. The first two measures contain rests with a lambda symbol above them. The third measure has a dynamic marking 'mf' and a fermata. The final measure has a double bar line and the word 'FIN.' written to the right. There are also some handwritten notes like 'bb' and '8' above the staff.

Two empty musical staves, one in treble clef and one in bass clef.

Part 2 Teil 2

*Adagio* (sehr langsam und ruhig)

Handwritten musical notation for the second system. It consists of two staves. The top staff is in treble clef and the bottom in bass clef. The first measure has a circled 'pp' dynamic marking. There are various notes, rests, and slurs throughout the system.

Handwritten musical notation for the third system. It consists of two staves. The top staff is in treble clef and the bottom in bass clef. The system includes notes, rests, slurs, and dynamic markings such as 'f' and 'p'. There is a circled '2' at the end of the system.

Handwritten musical notation for the first system. The top staff is in treble clef and the bottom staff is in bass clef. The music consists of several measures with notes, rests, and dynamic markings. A circled 'p' is written in the first measure of the top staff. There are also some handwritten annotations above the notes, including a 'b' and some dashed lines.

Handwritten musical notation for the second system. The top staff is in treble clef and the bottom staff is in bass clef. The music consists of several measures with notes, rests, and dynamic markings. A circled 'p' is written in the first measure of the top staff. There are also some handwritten annotations, including a circled '2' at the end of the system and the word 'du' written below the notes.

Handwritten musical notation for the third system. The top staff is in treble clef and the bottom staff is in bass clef. The music consists of several measures with notes, rests, and dynamic markings. A circled 'p' is written in the first measure of the top staff. There are also some handwritten annotations, including a circled '3' at the end of the system and the word 'du' written below the notes.

*breit*

Handwritten musical notation for measures 6 and 7. Measure 6 is circled with a '6'. The notation includes treble and bass staves with notes, rests, and dynamic markings such as *pp*. Measure 7 is circled with a '7'.

Handwritten musical notation for measure 8, circled with an '8'. The notation includes treble and bass staves with notes, rests, and dynamic markings such as *pp* and *mf*. The word *dim* is written below the staff.

Handwritten musical notation for measure 9, circled with a '9'. The notation includes treble and bass staves with notes, rests, and dynamic markings such as *pp*, *mf*, and *f*. The word *dim* is written below the staff.

breit (appassionata)

Handwritten musical score for measures 10-11. The system consists of two staves. The upper staff is in treble clef with a key signature of one sharp (F#) and a common time signature (C). It features a melodic line with slurs and a dynamic marking of *gliss*. The lower staff is in bass clef with a common time signature (C) and contains a bass line with chordal accompaniment marked with '+' signs. A circled measure number '10' is in the top right corner.

Handwritten musical score for measures 11-12. The system consists of two staves. The upper staff is in treble clef with a key signature of one flat (Bb) and a common time signature (C). It features a melodic line with slurs and a dynamic marking of *gliss*. The lower staff is in bass clef with a common time signature (C) and contains a bass line with chordal accompaniment marked with '+' signs. A circled measure number '11' is in the top right corner.

Handwritten musical score for measures 12-13. The system consists of two staves. The upper staff is in treble clef with a key signature of one flat (Bb) and a common time signature (C). It features a melodic line with slurs and a dynamic marking of *gliss*. The lower staff is in bass clef with a common time signature (C) and contains a bass line with chordal accompaniment marked with '+' signs. A circled measure number '12' is in the top right corner.

Handwritten musical score for measures 13-14. The system consists of two staves. The upper staff is in treble clef with a key signature of one sharp (F#) and a common time signature (C). It features a melodic line with slurs and a dynamic marking of *ppp*. The lower staff is in bass clef with a common time signature (C) and contains a bass line with chordal accompaniment marked with '+' signs. A circled measure number '13' is in the top right corner.



Adolf Scherbaum

14

15

16

Handwritten musical score for measures 16-17. Measure 16 starts with a circled *pp* dynamic. Measure 17 has a circled **17** in the top right. The score includes treble and bass staves with various notes, rests, and dynamic markings like *mf* and *f*.

Handwritten musical score for measures 18-19. Measure 18 starts with a circled *ff* dynamic. The score includes treble and bass staves with notes, rests, and dynamic markings like *ff* and *p*.

Handwritten musical score for measures 20-21. Measure 20 starts with a circled *p* dynamic. Measure 21 has a circled **21** in the top right. The score includes treble and bass staves with notes, rests, and dynamic markings like *p* and *pp*.

Handwritten musical score for measures 22-23. Measure 22 starts with a circled *pp* dynamic. Measure 23 has a circled **23** in the top right. The score includes treble and bass staves with notes, rests, and dynamic markings like *pp* and *p*.

Handwritten musical notation on a grand staff. The top staff is in treble clef, the bottom in bass clef. The music consists of four measures. The first measure has a piano (pp) dynamic marking and a fermata over the final note. The second measure has a fermata over the final note. The third measure has a fermata over the final note. The fourth measure has a fermata over the final note and a 'FIN' marking. There are various handwritten annotations, including '7', '#', '+', and 'p'.

# Teil 3

Prestissimo

hart (auf 1 Schlag)!!

hart

2

Handwritten musical notation for system 3. The top staff contains a melodic line with three groups of notes, each marked with a circled cross symbol. The bottom staff contains a bass line with notes and rests, including a circled cross symbol. A circled number '3' is in the top right corner.

Handwritten musical notation for system 4. The top staff is marked "next." and contains a melodic line with notes and rests, including a circled cross symbol. The bottom staff contains a bass line with notes and rests, including a circled cross symbol. A circled number '4' is in the top right corner.

Handwritten musical notation for system 5. The top staff contains a melodic line with notes and rests, including a circled cross symbol. The bottom staff contains a bass line with notes and rests, including a circled cross symbol. A circled number '5' is in the top right corner.

6

hart

7

8

9

Handwritten musical notation for measures 10 and 11. The system consists of two staves. The upper staff is in treble clef with a key signature of one sharp (F#) and a time signature of 7/8. The lower staff is in bass clef with a key signature of two sharps (F# and C#). Measure 10 contains a whole note chord with a fermata. Measure 11 contains a whole note chord with a fermata. A circled number '10' is in the top right corner.

Handwritten musical notation for measures 11 and 12. The system consists of two staves. The upper staff is in treble clef with a key signature of one sharp (F#) and a time signature of 2/2. The lower staff is in bass clef with a key signature of one sharp (F#) and a time signature of 2/2. Measure 11 contains a whole note chord with a fermata. Measure 12 contains a whole note chord with a fermata. A circled number '11' is in the top left, and a circled 'p' with an arrow is below the first measure. The text 'piano crescendo' with an arrow is written above the second measure. A circled number '12' is in the top right corner.

Handwritten musical notation for measures 12 and 13. The system consists of two staves. The upper staff is in treble clef with a key signature of one sharp (F#) and a time signature of 2/2. The lower staff is in bass clef with a key signature of one sharp (F#) and a time signature of 2/2. Measure 12 contains a whole note chord with a fermata. Measure 13 contains a whole note chord with a fermata. A circled number '12' is in the top right corner.





16

17

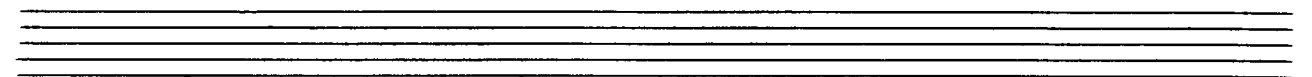
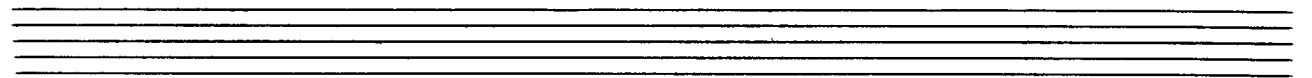
18

19

20

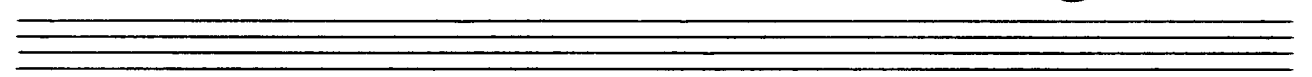
21

22



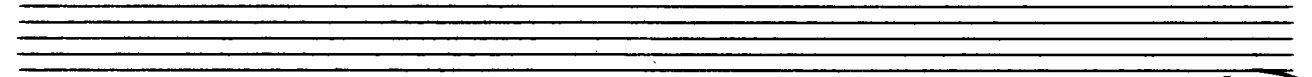
(wie ein Chorale) 23

ppp



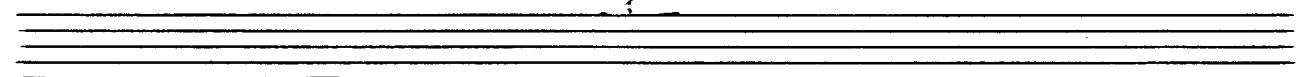
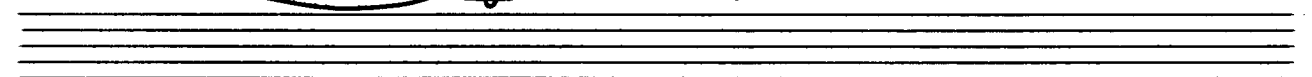
24

ppp



25

ppp

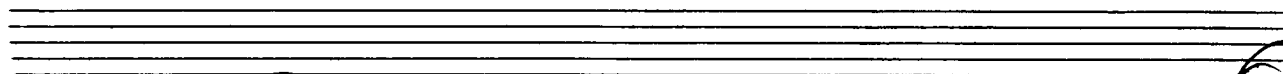
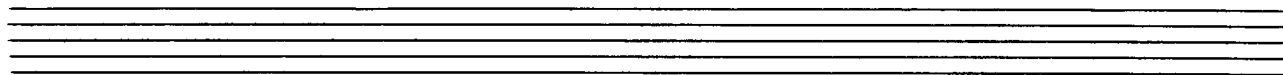


*Andante*

Hand

26

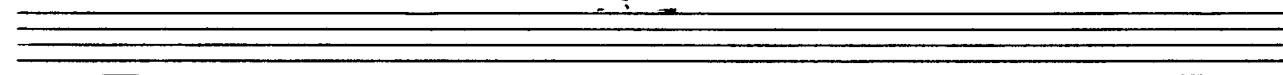
27



Handwritten musical notation for measures 28. The system consists of two staves. The upper staff is in treble clef with a key signature of one sharp (F#) and a 3/4 time signature. It contains three measures of music, each with a chord and a melodic line. The lower staff is in bass clef with the same key signature and time signature. It contains three measures of music, primarily consisting of chords. A circled number '28' is in the top right corner.

Handwritten musical notation for measures 29. The system consists of two staves. The upper staff is in treble clef with a key signature of one sharp (F#) and a 3/4 time signature. It contains three measures of music, including a chord marked 'hart' and a melodic line. The lower staff is in bass clef with the same key signature and time signature. It contains three measures of music, primarily consisting of chords. A circled number '29' is in the top right corner.

Handwritten musical notation for measures 30. The system consists of two staves. The upper staff is in treble clef with a key signature of one sharp (F#) and a 3/4 time signature. It contains three measures of music, including a chord marked 'hart' and a melodic line. The lower staff is in bass clef with the same key signature and time signature. It contains three measures of music, primarily consisting of chords. A circled number '30' is in the top right corner.



bart, ~ ~ ~ ~ ~

31

32

33

34

Handwritten musical score for measures 35. The system consists of two staves. The upper staff is in treble clef and the lower staff is in bass clef. A circled key signature of three sharps (F#, C#, G#) is written in the upper left. The notation includes various notes, rests, and slurs. A circled measure number '35' is in the top right corner.

Handwritten musical score for measures 36. The system consists of two staves. The upper staff is in treble clef and the lower staff is in bass clef. A circled key signature of three sharps (F#, C#, G#) is written in the upper left. The word 'pesante' is written above the first measure of the upper staff. In the middle of the system, there are handwritten notes: 'ad lib.' and 'breit cis oder c'. A circled measure number '36' is in the top right corner.

Handwritten musical score for the end of the piece. The system consists of two staves. The upper staff is in treble clef and the lower staff is in bass clef. A circled key signature of three sharps (F#, C#, G#) is written in the upper left. The word 'trist' is written in the lower staff. The system concludes with a double bar line and a large, stylized signature 'Adolf Scherbaum' and the year '1967' written across the staves.