

L.v. BEETHOVEN



NOTENHEFT

W.A. MOZART



F. SCHUBERT



J. HAYDN



J. STRAUSS



PIRATI

I. 40 Choräle

1964
Abt. Scherbaum

Handwritten musical notation for the first system, featuring a treble clef, a key signature of one sharp (F#), and a 4/4 time signature. The notation includes a series of notes and rests on a five-line staff, with some notes beamed together. There are also some handwritten annotations and symbols below the staff.

Handwritten musical notation for the second system, continuing the piece. It features a treble clef, a key signature of one sharp (F#), and a 4/4 time signature. The notation includes a series of notes and rests on a five-line staff, with some notes beamed together. There are also some handwritten annotations and symbols below the staff.

Handwritten musical notation for the third system, continuing the piece. It features a treble clef, a key signature of one sharp (F#), and a 4/4 time signature. The notation includes a series of notes and rests on a five-line staff, with some notes beamed together. There are also some handwritten annotations and symbols below the staff.

lento

II.

Handwritten musical notation for the first system. It features a treble clef, a key signature of one flat (B-flat), and a 3/4 time signature. The notation is spread across two staves, with various notes, rests, and accidentals.

Handwritten musical notation for the second system. It continues the piece with similar notation and a 3/4 time signature. The notation is spread across two staves.

Handwritten musical notation for the third system. It features a treble clef and a 3/4 time signature. The notation is spread across two staves.

Handwritten musical notation for the fourth system. It includes a treble clef and a 3/4 time signature. The notation is spread across two staves.

ait

2/4

BO

up

ff

+

000

000

+

000

III

Handwritten musical notation for the first system. It features a treble clef and a common time signature. The music consists of two staves. The upper staff contains several measures with notes, rests, and accidentals, including a measure with a whole note and a measure with a half note. The lower staff contains notes and rests, with some notes marked with a flat sign.

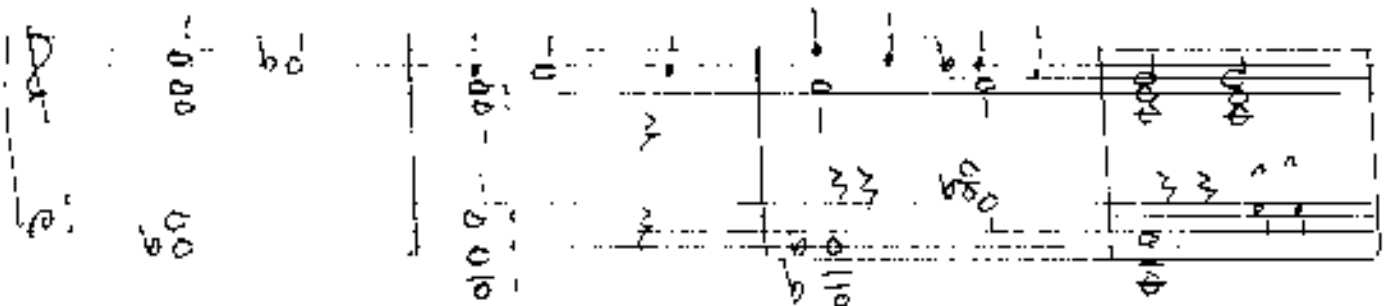
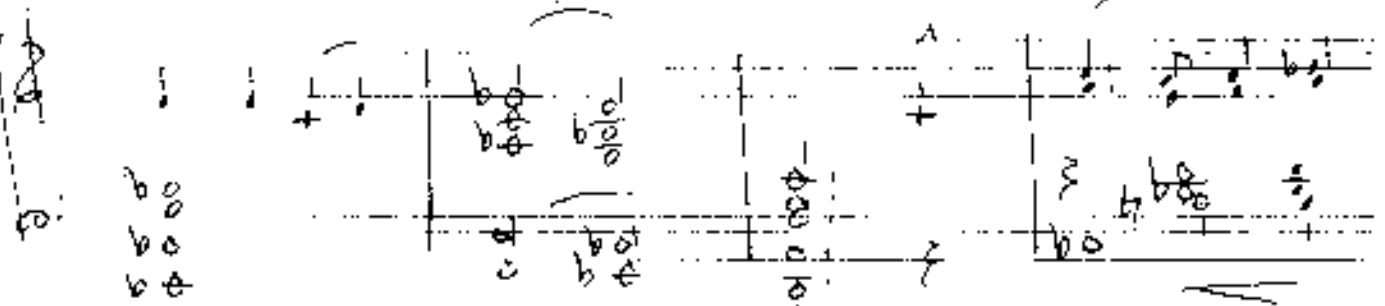
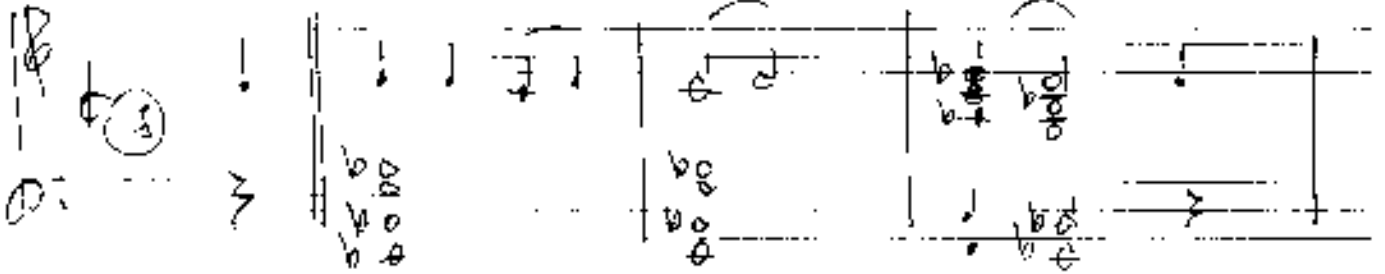
Handwritten musical notation for the second system. It features a treble clef and a common time signature. The music consists of two staves. The upper staff contains several measures with notes, rests, and accidentals, including a measure with a whole note and a measure with a half note. The lower staff contains notes and rests, with some notes marked with a flat sign.

Handwritten musical notation for the third system. It features a treble clef and a common time signature. The music consists of two staves. The upper staff contains several measures with notes, rests, and accidentals, including a measure with a whole note and a measure with a half note. The lower staff contains notes and rests, with some notes marked with a flat sign.

Handwritten musical notation for the fourth system. It features a treble clef and a common time signature. The music consists of two staves. The upper staff contains several measures with notes, rests, and accidentals, including a measure with a whole note and a measure with a half note. The lower staff contains notes and rests, with some notes marked with a flat sign.

(4)

linear



Handwritten musical notation for the first system, consisting of two staves. The top staff has a treble clef and contains notes with accidentals (sharps and naturals) and some slurs. The bottom staff has a bass clef and contains notes with accidentals and some slurs. There are some handwritten annotations like '110' and '5'.

Handwritten musical notation for the second system, consisting of two staves. The top staff has a treble clef and contains notes with accidentals and slurs. The bottom staff has a bass clef and contains notes with accidentals and slurs.

Handwritten musical notation for the third system, consisting of two staves. The top staff has a treble clef and contains notes with accidentals and slurs. The bottom staff has a bass clef and contains notes with accidentals and slurs.

V diu + rit ...

Handwritten musical notation for the fourth system, consisting of two staves. The top staff has a treble clef and contains notes with accidentals and slurs. The bottom staff has a bass clef and contains notes with accidentals and slurs. There are some handwritten annotations like 'p' and 'rit'.

Handwritten musical notation for system 1, measures 1-4. The system consists of two staves. The top staff has a treble clef and a key signature of one sharp (F#). The bottom staff has a bass clef. Measure 1 contains a whole note chord of F#4 and C5. Measure 2 contains a whole note chord of F#4 and C5. Measure 3 contains a whole note chord of F#4 and C5. Measure 4 contains a whole note chord of F#4 and C5.

Handwritten musical notation for system 2, measures 5-8. The system consists of two staves. The top staff has a treble clef and a key signature of one sharp (F#). The bottom staff has a bass clef. Measure 5 contains a whole note chord of F#4 and C5. Measure 6 contains a whole note chord of F#4 and C5. Measure 7 contains a whole note chord of F#4 and C5. Measure 8 contains a whole note chord of F#4 and C5.

Handwritten musical notation for system 3, measures 9-12. The system consists of two staves. The top staff has a treble clef and a key signature of one sharp (F#). The bottom staff has a bass clef. Measure 9 contains a whole note chord of F#4 and C5. Measure 10 contains a whole note chord of F#4 and C5. Measure 11 contains a whole note chord of F#4 and C5. Measure 12 contains a whole note chord of F#4 and C5.

Handwritten musical notation for system 4, measures 13-16. The system consists of two staves. The top staff has a treble clef and a key signature of one sharp (F#). The bottom staff has a bass clef. Measure 13 contains a whole note chord of F#4 and C5. Measure 14 contains a whole note chord of F#4 and C5. Measure 15 contains a whole note chord of F#4 and C5. Measure 16 contains a whole note chord of F#4 and C5.

Handwritten musical notation on a grand staff. The top staff contains a melodic line with notes and rests, including a fermata. The bottom staff contains a bass line with notes and rests. There are various annotations like 'ff' and 'p'.

dim rit --

Handwritten musical notation on a grand staff. The top staff contains a melodic line with notes and rests, including a fermata. The bottom staff contains a bass line with notes and rests. There are various annotations like 'ff' and 'p'.

6

Handwritten musical notation for the first system. The treble clef is on the top line, and the bass clef is on the bottom line. The key signature has one flat (B-flat). The time signature is 3/4. The first measure of the treble staff has a circled '3' above it. The notation includes various notes, rests, and accidentals.

Handwritten musical notation for the second system. The treble clef is on the top line, and the bass clef is on the bottom line. The key signature has one flat (B-flat). The notation includes various notes, rests, and accidentals.

Handwritten musical notation for the third system. The treble clef is on the top line, and the bass clef is on the bottom line. The key signature has one flat (B-flat). The notation includes various notes, rests, and accidentals.

Handwritten musical notation for the fourth system. The treble clef is on the top line, and the bass clef is on the bottom line. The key signature has one flat (B-flat). The notation includes various notes, rests, and accidentals.



Prüfung

3/4 (P)

1 2 3 4 5

GRADUO

ep. mit + dir

8

Intro

Handwritten musical notation on a grand staff. The top staff contains a melodic line with eighth and quarter notes, and the bottom staff contains a bass line with whole and half notes. There are several accidentals (sharps) and a fermata over the second measure of the top staff.

Handwritten musical notation on a grand staff. The top staff contains a melodic line with quarter and eighth notes, and the bottom staff contains a bass line with quarter notes. A slur is drawn under the bottom staff, with the word "die" written below it.

Handwritten musical notation on a grand staff. The top staff contains a melodic line with quarter and eighth notes, and the bottom staff contains a bass line with quarter notes. There are several accidentals (sharps) and dynamic markings like "p" and "f". The words "eine" and "Halt" are written above the staff, and "ge. mit + die" is written below it.

9

breit

Handwritten musical notation for the first system. The treble clef is on the left. A circled '5' is written in the first measure. The notation includes quarter notes, eighth notes, and accidentals (sharps and naturals). The bass line consists of whole notes with accidentals.

Handwritten musical notation for the second system. It continues the piece with similar notation to the first system, including quarter notes, eighth notes, and accidentals in both staves.

Handwritten musical notation for the third system. It concludes the piece with various notes and accidentals in both staves.

erweit.

10

breit

Handwritten musical notation for the first system. It consists of two staves. The top staff has a treble clef and a circled '3' next to it. The bottom staff has a bass clef. The music is written in a key with one sharp (F#) and a 3/4 time signature. The notation includes quarter notes, eighth notes, and rests, with various accidentals (sharps and naturals).

Handwritten musical notation for the second system. It consists of two staves. The top staff has a treble clef and the bottom staff has a bass clef. The music continues with quarter notes, eighth notes, and rests, maintaining the key signature and time signature.

Handwritten musical notation for the third system. It consists of two staves. The top staff has a treble clef and the bottom staff has a bass clef. The notation includes quarter notes, eighth notes, and rests, with various accidentals.

12

DU BIST BEI UNS ZU - GEGEN - aus -

Handwritten musical notation for the first system. The treble staff contains notes with accidentals (sharps and naturals) and rests. The bass staff contains notes with accidentals. A circled 'P' is written in the first measure of the treble staff. There are also some handwritten annotations like a bracket and a vertical line.

VATER -

Handwritten musical notation for the second system. The treble staff contains notes with accidentals and rests. The bass staff contains notes with accidentals and rests.

— gegen

Handwritten musical notation for the third system. The treble staff contains notes with accidentals and rests. The bass staff contains notes with accidentals and rests. There are annotations: 'breit. III' with an arrow pointing to a measure, and 'III' written below the bass staff.

Handwritten musical notation for the fourth system. The treble staff contains notes with accidentals and rests. The bass staff contains notes with accidentals and rests. There are annotations: 'er. mit...' with an arrow pointing to the right, and a circled sharp sign (#) with '32' written below it.