

L.v. BEETHOVEN



NOTENHEFT

W.A. MOZART



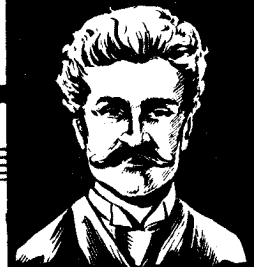
F. SCHUBERT



J. HAYDN



J. STRAUSS



I. 10 Choräle

1967
Adolf Scherbaum

Handwritten musical notation for the first system, consisting of a treble staff and a bass staff. The treble staff begins with a treble clef and a 4/4 time signature. The first measure contains a whole note chord (F4, C5) with a fermata. The second measure contains a half note chord (F4, C5) with a fermata. The third measure contains a half note chord (F4, C5) with a fermata. The fourth measure contains a half note chord (F4, C5) with a fermata. The fifth measure contains a half note chord (F4, C5) with a fermata. The sixth measure contains a half note chord (F4, C5) with a fermata. The bass staff contains a series of notes: a whole note (F2), a half note (C3), a quarter note (F2), a quarter note (C3), a quarter note (F2), a quarter note (C3), a quarter note (F2), a quarter note (C3), a quarter note (F2), a quarter note (C3), a quarter note (F2), a quarter note (C3).

Handwritten musical notation for the second system, consisting of a treble staff and a bass staff. The treble staff begins with a treble clef and a 4/4 time signature. The first measure contains a whole note chord (F4, C5) with a fermata. The second measure contains a half note chord (F4, C5) with a fermata. The third measure contains a half note chord (F4, C5) with a fermata. The fourth measure contains a half note chord (F4, C5) with a fermata. The fifth measure contains a half note chord (F4, C5) with a fermata. The sixth measure contains a half note chord (F4, C5) with a fermata. The bass staff contains a series of notes: a whole note (F2), a half note (C3), a quarter note (F2), a quarter note (C3), a quarter note (F2), a quarter note (C3), a quarter note (F2), a quarter note (C3), a quarter note (F2), a quarter note (C3), a quarter note (F2), a quarter note (C3).

Handwritten musical notation for the third system, consisting of a treble staff and a bass staff. The treble staff begins with a treble clef and a 4/4 time signature. The first measure contains a whole note chord (F4, C5) with a fermata. The second measure contains a half note chord (F4, C5) with a fermata. The third measure contains a half note chord (F4, C5) with a fermata. The fourth measure contains a half note chord (F4, C5) with a fermata. The fifth measure contains a half note chord (F4, C5) with a fermata. The sixth measure contains a half note chord (F4, C5) with a fermata. The bass staff contains a series of notes: a whole note (F2), a half note (C3), a quarter note (F2), a quarter note (C3), a quarter note (F2), a quarter note (C3), a quarter note (F2), a quarter note (C3), a quarter note (F2), a quarter note (C3), a quarter note (F2), a quarter note (C3).

Lento

II.

Handwritten musical notation for the first system. The top staff is a treble clef with a common time signature. The bottom staff is a bass clef with a common time signature. The music consists of four measures. The first measure has a whole note in the treble and a whole note in the bass. The second measure has a half note in the treble and a half note in the bass with a flat. The third measure has a half note in the treble and a half note in the bass with a flat. The fourth measure has a half note in the treble and a half note in the bass with a flat. There are some handwritten annotations like '33' and 'b' in the bass line.

Handwritten musical notation for the second system. The top staff is a treble clef with a common time signature. The bottom staff is a bass clef with a common time signature. The music consists of four measures. The first measure has a whole note in the treble and a whole note in the bass. The second measure has a half note in the treble and a half note in the bass with a flat. The third measure has a half note in the treble and a half note in the bass with a flat. The fourth measure has a half note in the treble and a half note in the bass with a flat. There are some handwritten annotations like '33' and 'b' in the bass line.

Handwritten musical notation for the third system. The top staff is a treble clef with a common time signature. The bottom staff is a bass clef with a common time signature. The music consists of four measures. The first measure has a whole note in the treble and a whole note in the bass. The second measure has a half note in the treble and a half note in the bass with a sharp. The third measure has a half note in the treble and a half note in the bass with a sharp. The fourth measure has a half note in the treble and a half note in the bass with a sharp. There are some handwritten annotations like '33' and 'b' in the bass line.

Handwritten musical notation for the fourth system. The top staff is a treble clef with a common time signature. The bottom staff is a bass clef with a common time signature. The music consists of four measures. The first measure has a whole note in the treble and a whole note in the bass. The second measure has a half note in the treble and a half note in the bass with a flat. The third measure has a half note in the treble and a half note in the bass with a flat. The fourth measure has a half note in the treble and a half note in the bass with a flat. There are some handwritten annotations like '33' and 'b' in the bass line.

Handwritten musical score on a grand staff. The top staff is in treble clef with a key signature of one flat (B-flat). The bottom staff is in bass clef. The music consists of several measures with notes, rests, and dynamic markings. Handwritten annotations include 'rit' above the first measure, 'p' below the first measure, 'rit' above the second measure, 'p' below the second measure, 'rit' above the third measure, 'p' below the third measure, 'rit' above the fourth measure, 'p' below the fourth measure, 'rit' above the fifth measure, 'p' below the fifth measure, 'rit' above the sixth measure, 'p' below the sixth measure, 'rit' above the seventh measure, 'p' below the seventh measure, 'rit' above the eighth measure, 'p' below the eighth measure, 'rit' above the ninth measure, 'p' below the ninth measure, 'rit' above the tenth measure, 'p' below the tenth measure, 'rit' above the eleventh measure, 'p' below the eleventh measure, 'rit' above the twelfth measure, 'p' below the twelfth measure, 'rit' above the thirteenth measure, 'p' below the thirteenth measure, 'rit' above the fourteenth measure, 'p' below the fourteenth measure, 'rit' above the fifteenth measure, 'p' below the fifteenth measure, 'rit' above the sixteenth measure, 'p' below the sixteenth measure, 'rit' above the seventeenth measure, 'p' below the seventeenth measure, 'rit' above the eighteenth measure, 'p' below the eighteenth measure, 'rit' above the nineteenth measure, 'p' below the nineteenth measure, 'rit' above the twentieth measure, 'p' below the twentieth measure. The piece ends with a double bar line.

III.

4

breit

Handwritten musical notation for the first system, measures 1-4. The notation is written on a grand staff with a treble clef on the upper staff and a bass clef on the lower staff. The key signature has one flat (B-flat). Measure 1 contains a circled 'f' in the treble staff and a fermata in the bass staff. Measures 2-4 contain various notes and rests, with some notes marked with a '+' sign. The bass staff contains several chords, some with flats and naturals.

Handwritten musical notation for the second system, measures 5-8. The notation continues on a grand staff. Measure 5 has a '+' sign in the treble staff. Measure 6 has a '+' sign in the bass staff. Measure 7 has a '+' sign in the treble staff. Measure 8 has a '+' sign in the bass staff. The notation includes various notes, rests, and chords.

Handwritten musical notation for the third system, measures 9-12. The notation continues on a grand staff. Measure 9 has a '+' sign in the treble staff. Measure 10 has a '+' sign in the bass staff. Measure 11 has a '+' sign in the treble staff. Measure 12 has a '+' sign in the bass staff. The notation includes various notes, rests, and chords.

Handwritten musical notation for the first system, consisting of two staves. The top staff contains notes with stems and beams, and the bottom staff contains rests and notes. There are some handwritten annotations like '5' and '11/5'.

Handwritten musical notation for the second system, consisting of two staves. The top staff contains notes with stems and beams, and the bottom staff contains rests and notes.

Handwritten musical notation for the third system, consisting of two staves. The top staff contains notes with stems and beams, and the bottom staff contains rests and notes.

dim + rit...

Handwritten musical notation for the fourth system, consisting of two staves. The top staff contains notes with stems and beams, and the bottom staff contains rests and notes. The system ends with a double bar line and the word 'Fin.' written to the right.

5

Handwritten musical notation for the first system, measures 1-4. The system consists of two staves. The upper staff is in treble clef and contains a half note chord in measure 1, followed by quarter notes in measures 2, 3, and 4. The lower staff is in bass clef and contains a half note chord in measure 1, followed by quarter notes in measures 2, 3, and 4. A handwritten '77' is written in the first measure of the upper staff.

Handwritten musical notation for the second system, measures 5-8. The system consists of two staves. The upper staff is in treble clef and contains a half note chord in measure 5, followed by quarter notes in measures 6, 7, and 8. The lower staff is in bass clef and contains a half note chord in measure 5, followed by quarter notes in measures 6, 7, and 8.

Handwritten musical notation for the third system, measures 9-12. The system consists of two staves. The upper staff is in treble clef and contains a half note chord in measure 9, followed by quarter notes in measures 10, 11, and 12. The lower staff is in bass clef and contains a half note chord in measure 9, followed by quarter notes in measures 10, 11, and 12.

Handwritten musical notation for the fourth system, measures 13-16. The system consists of two staves. The upper staff is in treble clef and contains a half note chord in measure 13, followed by quarter notes in measures 14, 15, and 16. The lower staff is in bass clef and contains a half note chord in measure 13, followed by quarter notes in measures 14, 15, and 16.

dim + rit...

6

Handwritten musical notation for the first system, measures 1-3. The music is written on a grand staff with treble and bass clefs. Measure 1 contains a circled 'f' dynamic marking. Measure 2 has an accent (^) over the first note. Measure 3 has an accent (^) over the first note and a circled 'f' dynamic marking. The notation includes various note values, rests, and accidentals.

Handwritten musical notation for the second system, measures 4-6. The music continues on a grand staff. Measure 4 has an accent (^) over the first note. Measure 5 has an accent (^) over the first note. Measure 6 has an accent (^) over the first note. The notation includes various note values, rests, and accidentals.

Handwritten musical notation for the third system, measures 7-9. The music continues on a grand staff. Measure 7 has an accent (^) over the first note. Measure 8 has an accent (^) over the first note. Measure 9 has an accent (^) over the first note. The notation includes various note values, rests, and accidentals.

Handwritten musical notation for the fourth system, measures 10-12. The music continues on a grand staff. Measure 10 has an accent (^) over the first note. Measure 11 has an accent (^) over the first note. Measure 12 has an accent (^) over the first note. The notation includes various note values, rests, and accidentals.

(7)

Ruhig

Handwritten musical notation for the first system. It consists of two staves: a treble clef staff and a bass clef staff. The treble staff contains several measures of music with notes and rests. The bass staff contains a series of notes, some with slurs. There are some handwritten annotations, including a circled 'P' and a '3/4' time signature.

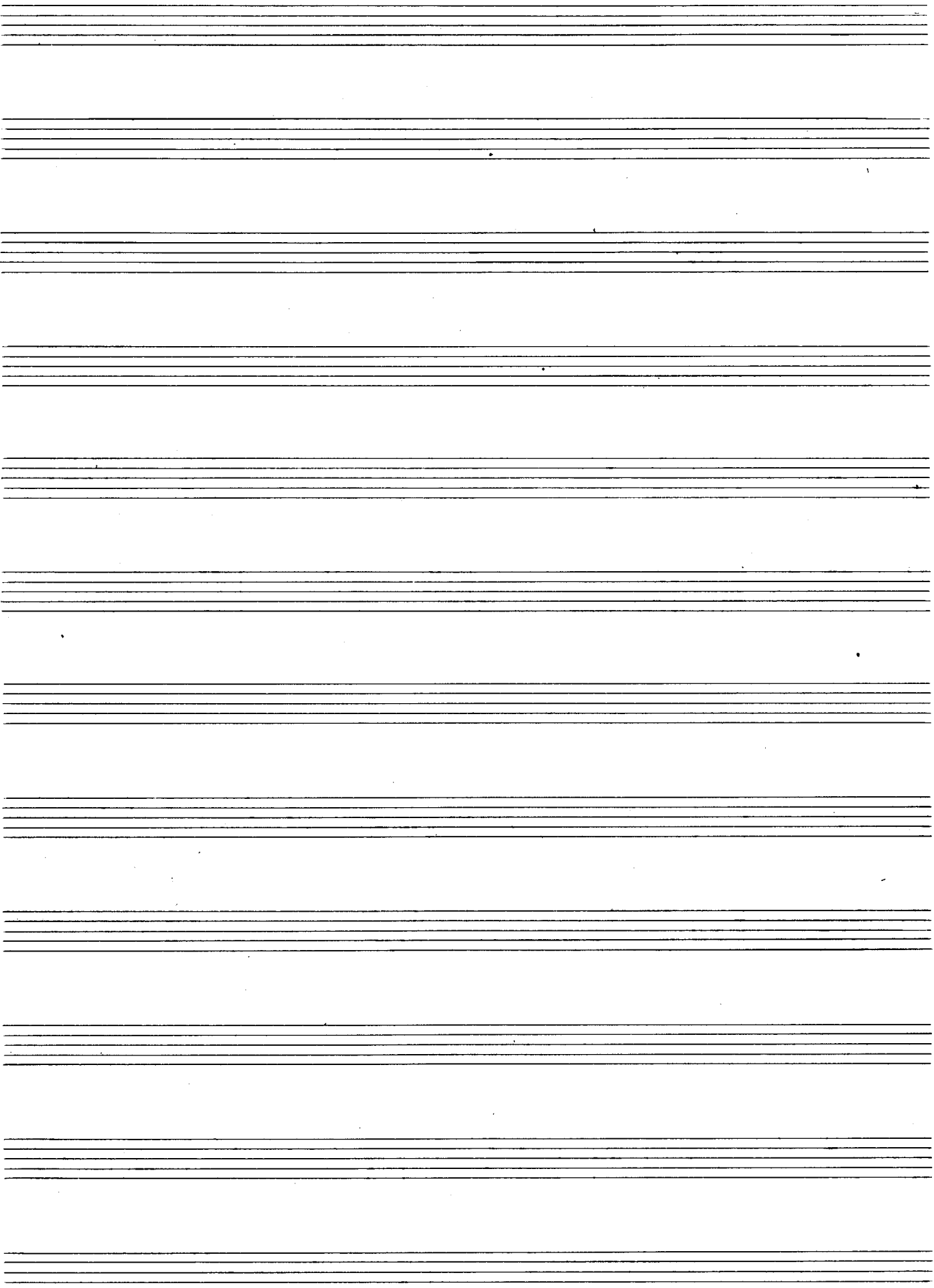
Handwritten musical notation for the second system. It consists of two staves: a treble clef staff and a bass clef staff. The treble staff contains several measures of music with notes and rests. The bass staff contains a series of notes, some with slurs. There are some handwritten annotations, including a circled 'P' and a '3/4' time signature.

1. 2. 3. 4. 5.

ADAGIO

Handwritten musical notation for the third system. It consists of two staves: a treble clef staff and a bass clef staff. The treble staff contains several measures of music with notes and rests. The bass staff contains a series of notes, some with slurs. There are some handwritten annotations, including a circled 'P' and a '3/4' time signature.

ex. mit + die



8

Ruhig

Handwritten musical notation for the first system, consisting of a treble and bass staff. The treble staff begins with a treble clef and a key signature of one sharp (F#). The first measure contains a quarter rest. The second measure contains a quarter note G4 with a slur underneath. The third measure contains a quarter rest. The fourth measure contains a quarter note G4 with a slur underneath. The bass staff begins with a bass clef and a key signature of one sharp (F#). The first measure contains a quarter note F#3. The second measure contains a quarter note G3. The third measure contains a quarter note G3. The fourth measure contains a quarter note G3.

Handwritten musical notation for the second system, consisting of a treble and bass staff. The treble staff begins with a treble clef and a key signature of one sharp (F#). The first measure contains a quarter note G4 with a slur underneath. The second measure contains a quarter note A4 with a slur underneath. The third measure contains a quarter note B4 with a slur underneath. The fourth measure contains a quarter note C5 with a slur underneath. The bass staff begins with a bass clef and a key signature of one sharp (F#). The first measure contains a quarter note F#3. The second measure contains a quarter note G3. The third measure contains a quarter note G3. The fourth measure contains a quarter note G3.

Handwritten musical notation for the third system, consisting of a treble and bass staff. The treble staff begins with a treble clef and a key signature of one sharp (F#). The first measure contains a quarter note G4 with a slur underneath. The second measure contains a quarter note A4 with a slur underneath. The third measure contains a quarter note B4 with a slur underneath. The fourth measure contains a quarter note C5 with a slur underneath. The bass staff begins with a bass clef and a key signature of one sharp (F#). The first measure contains a quarter note F#3. The second measure contains a quarter note G3. The third measure contains a quarter note G3. The fourth measure contains a quarter note G3.

Handwritten musical notation on a grand staff. The top staff is in treble clef and the bottom in bass clef. The music consists of several measures with notes, rests, and accidentals. A sharp sign is visible in the first measure of the top staff.

Handwritten musical notation on a grand staff. The top staff is in treble clef and the bottom in bass clef. The music consists of several measures with notes and rests. A sharp sign is visible in the top staff.

Handwritten musical notation on a grand staff. The top staff is in treble clef and the bottom in bass clef. The music consists of several measures with notes and rests. There are handwritten annotations "seine Huld" above the top staff and "gr. mit + dein ..." below the bottom staff. A double bar line is present.

15

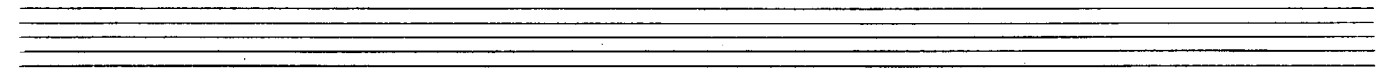
9

breit

Handwritten musical notation for the first system, measures 1-4. The music is in G major (one sharp) and 3/4 time. The first measure contains a circled 'f' dynamic marking. The notation includes a treble clef, a key signature of one sharp, and various rhythmic values such as quarter notes, eighth notes, and rests. The bass line consists of whole notes and rests.

Handwritten musical notation for the second system, measures 5-8. The notation continues from the first system, maintaining the G major key signature and 3/4 time signature. It features a treble clef and a bass line with whole notes and rests.

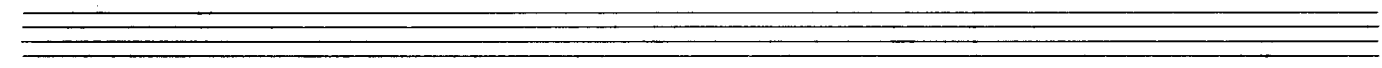
Handwritten musical notation for the third system, measures 9-12. The notation continues from the second system. The first measure of this system has a circled 'f' dynamic marking. The notation includes a treble clef and a bass line with whole notes and rests.



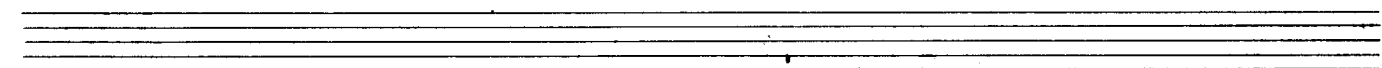
Handwritten musical notation on two staves. The upper staff contains a melodic line with a key signature of one sharp (F#) and a common time signature (C). The lower staff contains a bass line with a key signature of one sharp (F#). The notation includes quarter notes, eighth notes, and rests.



Handwritten musical notation on two staves. The upper staff continues the melodic line with quarter and eighth notes. The lower staff continues the bass line with quarter notes and rests. The piece concludes with a double bar line.



Handwritten musical notation on two staves. The upper staff features a melodic line with quarter and eighth notes. The lower staff features a bass line with quarter notes and rests. The notation includes various rhythmic values and rests.



er. mit.

Handwritten musical notation on two staves. The upper staff contains a melodic line with quarter notes and rests. The lower staff contains a bass line with quarter notes and rests. The notation includes a key signature of one sharp (F#) and a common time signature (C). The piece concludes with a double bar line and the word "Fine." written to the right.

12

70

breit

Handwritten musical notation for the first system, measures 1-4. The notation is in G major (one sharp) and 4/4 time. It features a treble and bass clef with various chords and melodic lines. A circled 'f' is written in the first measure of the treble staff.

Handwritten musical notation for the second system, measures 5-8. The notation continues from the first system, showing further chordal and melodic development in G major.

Handwritten musical notation for the third system, measures 9-12. The notation concludes the piece with final chords and melodic fragments in G major.

DU BIST BEI UNS ZU - GEGEN - aus -

Handwritten musical notation for the first system, featuring a treble and bass staff with notes and chords. A circled '10' is written above the first measure.

VATER -

Handwritten musical notation for the second system, featuring a treble and bass staff with notes and chords.

— gegen

Handwritten musical notation for the third system, featuring a treble and bass staff with notes and chords. Includes annotations 'breit. >>>' and '1' above notes.

Handwritten musical notation for the fourth system, featuring a treble and bass staff with notes and chords. Includes a circled 'H' and the number '33' at the end.

gr. rit. ...