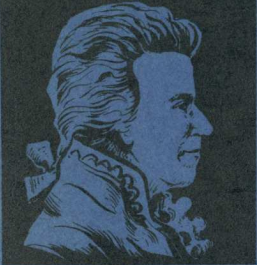


L.v. BEETHOVEN



NOTENHEFT

W.A. MOZART



F. SCHUBERT



J. HAYDN



J. STRAUSS



I.

10 Choräle

1967
Adolf Scherbaum

F 153 Scherbaum 344

Handwritten musical notation for the first system. The treble staff contains a melodic line with a sharp sign and a slur. The bass staff contains a bass line with notes and rests. Dynamic markings include *pp* and *ppp*.

Handwritten musical notation for the second system. The treble staff continues the melodic line with a slur and a sharp sign. The bass staff continues the bass line with notes and rests. Dynamic markings include *pp* and *ppp*.

Handwritten musical notation for the third system. The treble staff features a melodic line with a slur and a sharp sign. The bass staff continues the bass line with notes and rests. Dynamic markings include *pp* and *ppp*.

lento

Handwritten musical notation for the final system. The treble staff contains a melodic line with a slur and a sharp sign. The bass staff continues the bass line with notes and rests. Dynamic markings include *pp* and *mit.*. The system concludes with a double bar line and the word *FIN*.

II.

Handwritten musical notation for the first system. It consists of a treble clef, a common time signature (C), and a four-measure phrase. The notes are: measure 1: quarter rest; measure 2: quarter note G4, quarter note A4, quarter note B4, quarter note C5; measure 3: quarter note B4, quarter note A4, quarter note G4, quarter note F4; measure 4: quarter note E4, quarter note D4, quarter note C4, quarter note B3. There are some handwritten annotations below the staff, including '33', 'b0', and '40'.

Handwritten musical notation for the second system. It consists of a treble clef, a common time signature (C), and a four-measure phrase. The notes are: measure 1: quarter note G4, quarter note A4, quarter note B4, quarter note C5; measure 2: quarter note B4, quarter note A4, quarter note G4, quarter note F4; measure 3: quarter note E4, quarter note D4, quarter note C4, quarter note B3; measure 4: quarter note A3, quarter note G3, quarter note F3, quarter note E3. There are some handwritten annotations below the staff, including '33', 'b0', and '40'.

Handwritten musical notation for the third system. It consists of a treble clef, a common time signature (C), and a four-measure phrase. The notes are: measure 1: quarter note G4, quarter note A4, quarter note B4, quarter note C5; measure 2: quarter note B4, quarter note A4, quarter note G4, quarter note F4; measure 3: quarter note E4, quarter note D4, quarter note C4, quarter note B3; measure 4: quarter note A3, quarter note G3, quarter note F3, quarter note E3. There are some handwritten annotations below the staff, including '33', 'b0', and '40'.

Handwritten musical notation for the fourth system. It consists of a treble clef, a common time signature (C), and a four-measure phrase. The notes are: measure 1: quarter note G4, quarter note A4, quarter note B4, quarter note C5; measure 2: quarter note B4, quarter note A4, quarter note G4, quarter note F4; measure 3: quarter note E4, quarter note D4, quarter note C4, quarter note B3; measure 4: quarter note A3, quarter note G3, quarter note F3, quarter note E3. There are some handwritten annotations below the staff, including '33', 'b0', and '40'.

III.

Handwritten musical notation for the first system. The treble staff contains a series of notes with accidentals (flats and naturals) and some beamed notes. The bass staff contains notes with accidentals and rests. The system is divided into three measures by vertical bar lines.

Handwritten musical notation for the second system. The treble staff contains notes with accidentals and rests. The bass staff contains notes with accidentals and rests. The system is divided into three measures by vertical bar lines.

Handwritten musical notation for the third system. The treble staff contains notes with accidentals and rests. The bass staff contains notes with accidentals and rests. The system is divided into three measures by vertical bar lines.

Handwritten musical notation for the fourth system. The treble staff contains notes with accidentals and rests. The bass staff contains notes with accidentals and rests. The system is divided into three measures by vertical bar lines.

4

breit

Handwritten musical notation for the first system. It consists of two staves. The upper staff is in treble clef and contains a circled 'f' dynamic marking, followed by a series of notes and rests. The lower staff is in bass clef and contains several chords, each represented by a letter 'b' followed by two notes (e.g., b a, b g, b f). There are also some rests and a wavy line in the lower staff.

Handwritten musical notation for the second system. It consists of two staves. The upper staff is in treble clef and contains notes and rests. The lower staff is in bass clef and contains chords (e.g., b a, b g, b f) and rests. There are also some dynamic markings and a wavy line in the lower staff.

Handwritten musical notation for the third system. It consists of two staves. The upper staff is in treble clef and contains notes and rests. The lower staff is in bass clef and contains chords (e.g., b a, b g, b f) and rests. There are also some dynamic markings and a wavy line in the lower staff.

Handwritten musical notation on a grand staff. The upper staff is in treble clef and the lower staff is in bass clef. The music consists of several measures with notes, rests, and accidentals. A key signature change to one sharp (F#) is indicated in the second measure. The notation includes various note values and rests.

Handwritten musical notation on a grand staff. The upper staff is in treble clef and the lower staff is in bass clef. The music continues with notes, rests, and accidentals. A key signature change to two sharps (F#, C#) is indicated in the second measure. The notation includes various note values and rests.

Handwritten musical notation on a grand staff. The upper staff is in treble clef and the lower staff is in bass clef. The music continues with notes, rests, and accidentals. A key signature change to three sharps (F#, C#, G#) is indicated in the second measure. The notation includes various note values and rests.

rit. + rit...

Handwritten musical notation on a grand staff. The upper staff is in treble clef and the lower staff is in bass clef. The music concludes with notes, rests, and accidentals. The notation includes various note values and rests, ending with a double bar line and the word "Fin." written to the right.

5

Handwritten musical notation for the first system. The treble staff begins with a treble clef and a '77' marking. The first measure contains a bracketed group of notes. The bass staff contains notes with stems and some accidentals. The system is divided into four measures by vertical bar lines.

Handwritten musical notation for the second system. The treble staff starts with a treble clef. The first measure has a bracketed group of notes with a sharp sign. The bass staff contains notes with stems and accidentals. The system is divided into four measures by vertical bar lines.

Handwritten musical notation for the third system. The treble staff starts with a treble clef. The first measure has a bracketed group of notes. The bass staff contains notes with stems and accidentals. The system is divided into four measures by vertical bar lines.

Handwritten musical notation for the fourth system. The treble staff starts with a treble clef. The first measure has a bracketed group of notes. The bass staff contains notes with stems and accidentals. The system is divided into four measures by vertical bar lines.

Handwritten musical notation on a five-line staff. The top line contains a treble clef, a key signature of one sharp (F#), and a common time signature (C). The music consists of several measures with notes, rests, and dynamic markings like 'p' and 'f'. There are also some handwritten annotations like '77' and '7'.

dim + rit. - -

Handwritten musical notation on a five-line staff. The top line contains a treble clef, a key signature of one sharp (F#), and a common time signature (C). The music consists of several measures with notes, rests, and dynamic markings like 'p' and 'f'. There are also some handwritten annotations like '77' and '7'. The piece ends with a double bar line and the word 'Fin'.

6

Handwritten musical notation for the first system, measures 1-3. The top staff is in treble clef with a key signature of one sharp (F#). The bottom staff is in bass clef. Measure 1 contains a circled 'f' dynamic marking. Measure 2 has an accent (^) over the first note. Measure 3 has an accent (^) over the first note and a circled 'f' dynamic marking.

Handwritten musical notation for the second system, measures 4-6. The top staff is in treble clef with a key signature of one sharp (F#). The bottom staff is in bass clef. Measure 4 has an accent (^) over the first note. Measure 5 has an accent (^) over the first note. Measure 6 has an accent (^) over the first note.

Handwritten musical notation for the third system, measures 7-9. The top staff is in treble clef with a key signature of one sharp (F#). The bottom staff is in bass clef. Measure 7 has an accent (^) over the first note. Measure 8 has an accent (^) over the first note. Measure 9 has an accent (^) over the first note.

Handwritten musical notation for the fourth system, measures 10-12. The top staff is in treble clef with a key signature of one sharp (F#). The bottom staff is in bass clef. Measure 10 has an accent (^) over the first note. Measure 11 has an accent (^) over the first note. Measure 12 has an accent (^) over the first note.

Handwritten musical notation on two staves. The top staff is in treble clef and the bottom staff is in bass clef. The notation includes various notes, rests, and accidentals. There are some scribbles and markings above the notes, possibly indicating fingerings or dynamics.

Handwritten musical notation on two staves. The top staff is in treble clef and the bottom staff is in bass clef. The notation includes various notes, rests, and accidentals. There are some scribbles and markings above the notes, possibly indicating fingerings or dynamics. The word "gr. rit." is written below the first two measures. The word "Fim" is written at the end of the piece. There are also some handwritten notes and symbols to the right of the staff, including a circled 'C' and some numbers.

(7)

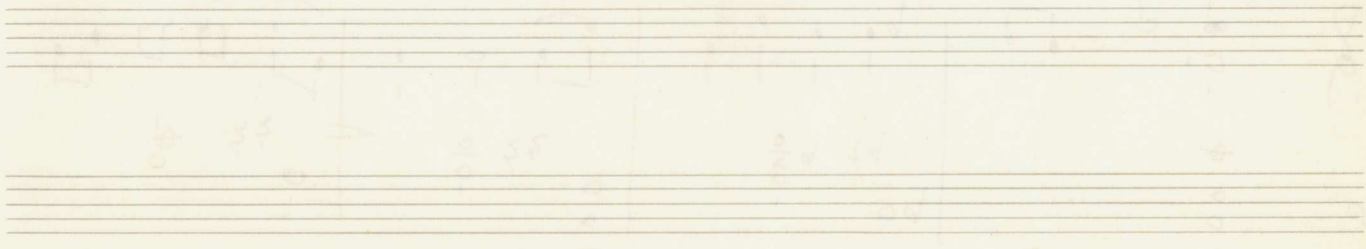
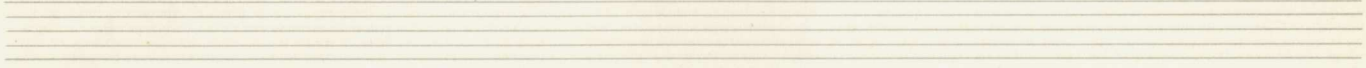
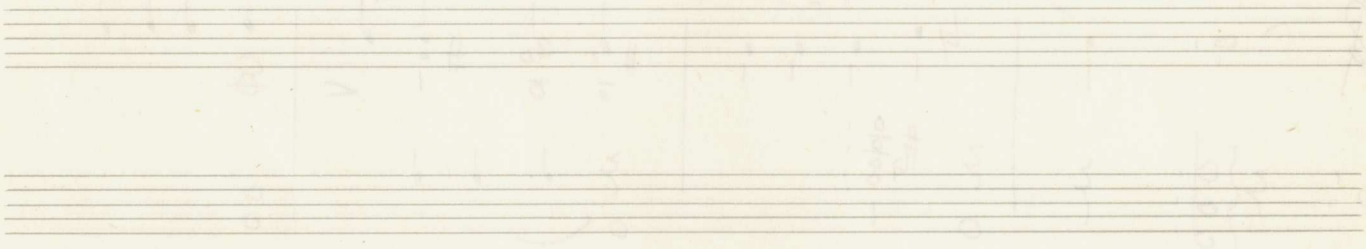
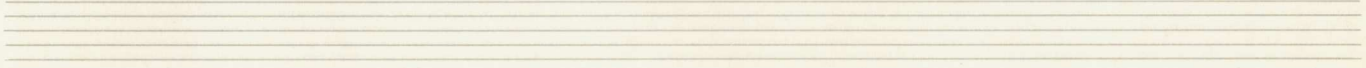
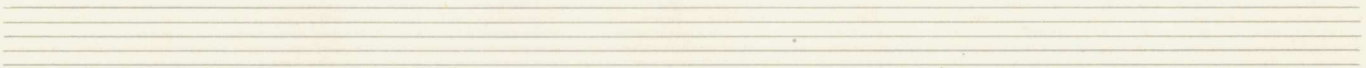
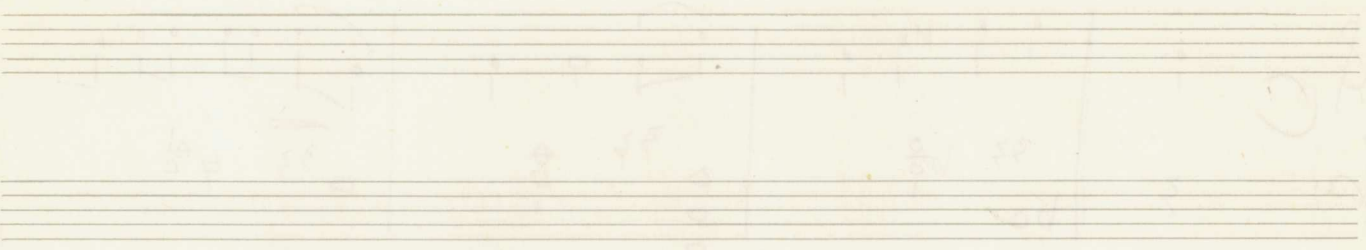
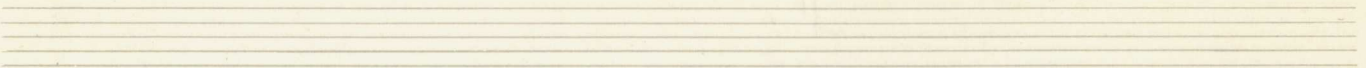
Ruhig

3/4 (P)

1. 2. 3. 4. | 5.

ADAGIO

ex. mit + die



8

Ruhig

Handwritten musical notation for the first system, consisting of two staves. The top staff has a treble clef and the bottom staff has a bass clef. The music includes various notes, rests, and accidentals (sharps and naturals).

Handwritten musical notation for the second system, consisting of two staves. The top staff has a treble clef and the bottom staff has a bass clef. The music includes various notes, rests, and accidentals. The word "die" is written below the bottom staff.

Handwritten musical notation for the third system, consisting of two staves. The top staff has a treble clef and the bottom staff has a bass clef. The music includes various notes, rests, and accidentals. The words "seine Huld" are written above the top staff, and "ge. mit + dein ..." is written below the bottom staff. A double bar line is present, followed by a key signature change to two sharps and a final cadence.

15

9

breit

Handwritten musical notation for the first system, measures 1-4. The notation is on a grand staff with treble and bass clefs. Measure 1 starts with a treble clef, a common time signature, and a circled 'f' dynamic marking. The melody in the treble clef consists of a quarter note G4, a quarter note A4, and a quarter note B4. The bass clef accompaniment consists of a half note G3 and a half note A3. Measure 2 continues the melody with a quarter note C5 and a quarter note D5. The bass clef accompaniment consists of a half note B2 and a half note C3. Measure 3 continues the melody with a quarter note E5 and a quarter note F5. The bass clef accompaniment consists of a half note D3 and a half note E3. Measure 4 continues the melody with a quarter note G5 and a quarter note A5. The bass clef accompaniment consists of a half note F3 and a half note G3. There are some additional markings in the bass clef, including a squiggle and a '3' with a squiggle.

Handwritten musical notation for the second system, measures 5-8. The notation is on a grand staff with treble and bass clefs. Measure 5 continues the melody with a quarter note B5 and a quarter note C6. The bass clef accompaniment consists of a half note A3 and a half note B3. Measure 6 continues the melody with a quarter note D6 and a quarter note E6. The bass clef accompaniment consists of a half note C3 and a half note D3. Measure 7 continues the melody with a quarter note F6 and a quarter note G6. The bass clef accompaniment consists of a half note E3 and a half note F3. Measure 8 continues the melody with a quarter note A6 and a quarter note B6. The bass clef accompaniment consists of a half note G3 and a half note A3. There are some additional markings in the bass clef, including a squiggle and a '3' with a squiggle.

Handwritten musical notation for the third system, measures 9-12. The notation is on a grand staff with treble and bass clefs. Measure 9 continues the melody with a quarter note C7 and a quarter note D7. The bass clef accompaniment consists of a half note B3 and a half note C4. Measure 10 continues the melody with a quarter note E7 and a quarter note F7. The bass clef accompaniment consists of a half note C4 and a half note D4. Measure 11 continues the melody with a quarter note G7 and a quarter note A7. The bass clef accompaniment consists of a half note D4 and a half note E4. Measure 12 continues the melody with a quarter note B7 and a quarter note C8. The bass clef accompaniment consists of a half note E4 and a half note F4. There are some additional markings in the bass clef, including a squiggle and a '3' with a squiggle.

16

erweit.

70

breit

Handwritten musical notation for the first system, measures 1-4. The notation is written on a grand staff with treble and bass clefs. Measure 1 contains a circled 'f' dynamic marking. The notes are sparse and widely spaced, consistent with the 'breit' (broad) instruction. The key signature has one sharp (F#).

Handwritten musical notation for the second system, measures 5-8. The notation continues on a grand staff. The notes are sparse and widely spaced, consistent with the 'breit' (broad) instruction. The key signature has one sharp (F#).

Handwritten musical notation for the third system, measures 9-12. The notation continues on a grand staff. The notes are sparse and widely spaced, consistent with the 'breit' (broad) instruction. The key signature has one sharp (F#).

DU BIST BEI UNS ZU - GEGEN - aus -

Handwritten musical notation for the first system. The treble staff begins with a treble clef and a key signature of one sharp (F#). The bass staff begins with a bass clef and a key signature of one sharp (F#). The notation includes various notes, rests, and chords. A circled '10' is written above the first measure of the bass staff.

VATER -

Handwritten musical notation for the second system. The treble staff begins with a treble clef and a key signature of one sharp (F#). The bass staff begins with a bass clef and a key signature of one sharp (F#). The notation includes various notes, rests, and chords.

— gegen

Handwritten musical notation for the third system. The treble staff begins with a treble clef and a key signature of one sharp (F#). The bass staff begins with a bass clef and a key signature of one sharp (F#). The notation includes various notes, rests, and chords. The word "breit. 77" is written in the bass staff.

Handwritten musical notation for the fourth system. The treble staff begins with a treble clef and a key signature of one sharp (F#). The bass staff begins with a bass clef and a key signature of one sharp (F#). The notation includes various notes, rests, and chords. The word "fine" is written at the end of the system.

gr. rit...

(F#)

33