

Notenheft

bitte MATERIAL schonen

KONZERT

für
Elektronenorgel
(Flöte)

Solo Bass mit (Verstärkeranlage)

Schlagzeug (Jazz)

in 2 Teilen

1964

Adolf Scherbaum

♩ = langsam

Handwritten musical score for the first system. The top staff is in treble clef with a 4/4 time signature and a *pp* dynamic marking. The bottom staff is in bass clef with a 4/4 time signature and a *pizz pp* dynamic marking. The music consists of three measures with various notes, accidentals, and phrasing slurs.

Handwritten musical score for the second system. The top staff is in treble clef with a 4/4 time signature. The bottom staff is in bass clef with a 4/4 time signature. The music consists of three measures with various notes, accidentals, and phrasing slurs.

Handwritten musical score for the first system. The system consists of two staves: a treble clef staff and a bass clef staff. The treble staff contains three measures of music. The first measure has a dynamic marking of *mf* and a slur over the notes. The second measure has a dynamic marking of *f* and a slur over the notes. The third measure has a dynamic marking of *p* and a slur over the notes. The bass staff contains three measures of music. The first measure has a dynamic marking of *mf*. The second measure has a dynamic marking of *f*. The third measure has a dynamic marking of *p*. There are also some handwritten annotations like a circled 'P' in the treble staff and a 'b' above the second measure.

Handwritten musical score for the second system. The system consists of two staves: a treble clef staff and a bass clef staff. The treble staff contains two measures of music. The first measure has a dynamic marking of *cresc.* and a slur over the notes. The second measure has a dynamic marking of *mf* and a slur over the notes. The bass staff contains two measures of music. The first measure has a dynamic marking of *mf*. The second measure has a dynamic marking of *mf*. There are also some handwritten annotations like a circled 'P' in the treble staff and a 'b' above the second measure.

Handwritten musical score for the first system. The top staff is in treble clef and the bottom staff is in bass clef. The music consists of two measures. The first measure contains a melodic line in the treble clef starting with a forte (*f*) dynamic, followed by a bass line in the bass clef. The second measure continues the melodic line in the treble clef, ending with a whole note chord. A vertical bar line separates the two measures.

Handwritten musical score for the second system. The top staff is in treble clef and the bottom staff is in bass clef. The music consists of four measures. The first measure contains a melodic line in the treble clef with a sharp sign (#) and a bass line in the bass clef. The second measure contains a melodic line in the treble clef with a sharp sign (#) and a bass line in the bass clef. The third measure contains a melodic line in the treble clef with the word "dun" written below it, a sharp sign (#), and a bass line in the bass clef. The fourth measure contains a melodic line in the treble clef with the word "den" written below it, a sharp sign (#), and a bass line in the bass clef. Dynamic markings include *p* (piano) in circles and *f* (forte) in circles. A vertical bar line separates the second and third measures.

Handwritten musical score for the first system. The top staff is in treble clef and the bottom staff is in bass clef. The music is written in 4/4 time. The first measure contains a half note G4 with a circled *pp* dynamic marking. The second measure contains a half note F4 with a *p* dynamic marking. The third measure contains a half note E4 with a *p* dynamic marking. The notes are connected by a slur. The bass staff contains quarter notes: G3, F3, E3, D3 in the first measure; G3, F3, E3, D3 in the second measure; and G3, F3, E3, D3 in the third measure. Dynamic markings *pp* and *p* are present in the bass staff.

Handwritten musical score for the second system. The top staff is in treble clef and the bottom staff is in bass clef. The music is written in 4/4 time. The first measure contains a half note G4 with a *mf* dynamic marking. The second measure contains a half note F4 with a *f* dynamic marking. The third measure contains a half note E4 with a *f* dynamic marking. The notes are connected by a slur. The bass staff contains quarter notes: G3, F3, E3, D3 in the first measure; G3, F3, E3, D3 in the second measure; and G3, F3, E3, D3 in the third measure. Dynamic markings *mf* and *f* are present in the bass staff.

Handwritten musical score for the first system. It consists of three staves. The top staff is in treble clef and contains four measures of music with notes and accidentals. Above the staff, the word "Gloss" is written in a wavy line above each measure. The middle staff is in bass clef and contains notes and accidentals. The bottom staff is in bass clef and contains rhythmic notation with stems and flags. A circled sharp sign is present at the beginning of the bottom staff.

Handwritten musical score for the second system. It consists of two staves. The top staff is in treble clef and contains three measures of music with notes and accidentals. The bottom staff is in bass clef and contains rhythmic notation with stems and flags.

Handwritten musical score for the first system, featuring a grand staff with treble and bass clefs. The music is divided into four measures. The first measure has a key signature of two flats (Bb, Eb) and a common time signature. The second measure has a key signature of one flat (Bb) and a common time signature. The third measure has a key signature of one sharp (F#) and a common time signature. The fourth measure has a key signature of two sharps (F#, C#) and a common time signature. The notation includes various notes, rests, and dynamic markings.

Handwritten musical score for the second system, featuring a grand staff with treble and bass clefs. The music is divided into four measures. The first measure has a key signature of two flats (Bb, Eb) and a common time signature. The second measure has a key signature of one flat (Bb) and a common time signature. The third measure has a key signature of one sharp (F#) and a common time signature. The fourth measure has a key signature of two sharps (F#, C#) and a common time signature. The notation includes various notes, rests, and dynamic markings.

Handwritten musical score for the first system. The top staff is in treble clef and the bottom staff is in bass clef. The music consists of three measures. The first measure has a piano (*pp*) dynamic marking and notes: G4 (quarter), A4 (quarter), B4 (quarter), C5 (quarter), B4 (quarter), A4 (quarter), G4 (quarter). The second measure has notes: G4 (quarter), A4 (quarter), B4 (quarter), C5 (quarter), B4 (quarter), A4 (quarter), G4 (quarter). The third measure has notes: G4 (quarter), A4 (quarter), B4 (quarter), C5 (quarter), B4 (quarter), A4 (quarter), G4 (quarter). The bass staff has notes: G2 (quarter), A2 (quarter), B2 (quarter), C3 (quarter), B2 (quarter), A2 (quarter), G2 (quarter). There are dynamic markings *pp* in both staves.

Handwritten musical score for the second system. The top staff is in treble clef and the bottom staff is in bass clef. The music consists of three measures. The first measure has notes: G4 (quarter), A4 (quarter), B4 (quarter), C5 (quarter), B4 (quarter), A4 (quarter), G4 (quarter). The second measure has notes: G4 (quarter), A4 (quarter), B4 (quarter), C5 (quarter), B4 (quarter), A4 (quarter), G4 (quarter). The third measure has notes: G4 (quarter), A4 (quarter), B4 (quarter), C5 (quarter), B4 (quarter), A4 (quarter), G4 (quarter). The bass staff has notes: G2 (quarter), A2 (quarter), B2 (quarter), C3 (quarter), B2 (quarter), A2 (quarter), G2 (quarter). There are dynamic markings *pp* in both staves.

Handwritten musical score for the first system. The top staff is in treble clef and the bottom staff is in bass clef. The music consists of three measures. The first measure has a treble clef staff with notes G4, A4, Bb4, and C5, with a fermata over the last two notes. The bass clef staff has notes Bb3, C4, D4, E4, F4, G4, A4, and Bb4. The second measure has a treble clef staff with notes C5, Bb4, A4, G4, F4, E4, D4, and C4, with a fermata over the last two notes. The bass clef staff has notes G4, F4, E4, D4, C4, Bb3, A3, and G3. The third measure has a treble clef staff with notes G4, A4, Bb4, C5, Bb4, A4, G4, and F4, with a fermata over the last two notes. The bass clef staff has notes G4, F4, E4, D4, C4, Bb3, A3, and G3. Dynamic markings include 'f' in the first and second measures, and 'p' in the third measure.

Handwritten musical score for the second system. The top staff is in treble clef and the bottom staff is in bass clef. The music consists of two measures. The first measure has a treble clef staff with notes G4, A4, Bb4, C5, Bb4, A4, G4, and F4, with a fermata over the last two notes. The bass clef staff has notes G4, F4, E4, D4, C4, Bb3, A3, and G3. The second measure has a treble clef staff with notes G4, A4, Bb4, C5, Bb4, A4, G4, and F4, with a fermata over the last two notes. The bass clef staff has notes G4, F4, E4, D4, C4, Bb3, A3, and G3. Dynamic markings include 'mf' in the second measure.

Handwritten musical score for the first system. It consists of two staves. The upper staff is in treble clef and begins with a dynamic marking of *f*. The lower staff is in bass clef and also begins with a dynamic marking of *f*. The music includes various rhythmic values, accidentals, and a triplet of eighth notes in the lower staff.

Handwritten musical score for the second system. It consists of two staves. The upper staff is in treble clef and the lower staff is in bass clef. The music includes various rhythmic values, accidentals, and dynamic markings such as *p*. There are also some circled symbols in the lower staff.

Handwritten musical score for the first system. The top staff is in treble clef with a 2/4 time signature and a circled 'p' dynamic marking. The bottom staff is in bass clef with a circled '4' time signature. The music is divided into three measures by vertical bar lines. The treble staff contains a melodic line with various accidentals (flats and sharps) and a circled 'p' dynamic marking. The bass staff contains a bass line with various accidentals and a circled '4' time signature.

Handwritten musical score for the second system. The top staff is in treble clef with a circled 'f' dynamic marking. The bottom staff is in bass clef with a circled 'f' dynamic marking. The music is divided into three measures by vertical bar lines. The treble staff contains a melodic line with various accidentals and a circled 'f' dynamic marking. The bass staff contains a bass line with various accidentals and a circled 'f' dynamic marking.

Handwritten musical score for the first system. It consists of three staves. The top two staves are for piano, with a brace on the left. The top staff is in treble clef and the bottom staff is in bass clef. The bottom staff is for bass, with a circled 'F' and a 4/4 time signature. The music is divided into three measures. The first measure shows piano chords and a bass line with eighth notes. The second and third measures show piano chords and a sustained bass line.

Handwritten musical score for the second system. It consists of three staves. The top two staves are for piano, with a brace on the left. The top staff is in treble clef and the bottom staff is in bass clef. The bottom staff is for bass, with a circled 'F' and a 4/4 time signature. The music is divided into three measures. The first measure shows piano chords and a bass line with eighth notes. The second and third measures show piano chords and a sustained bass line.

Handwritten musical score for the first system. The top staff is in treble clef with a key signature of one flat (B-flat) and a 3/4 time signature. The bottom staff is in bass clef with a 4/4 time signature. The music consists of three measures, each with a melodic line in the treble clef and a bass line in the bass clef. The notes and accidentals are as follows:

Measure	Treble Clef Notes	Bass Clef Notes
1	B ^b , A ^b , G ^b , F ^b , E ^b , D ^b	B ^b ♯, B ^b ♯, B ^b ♯
2	B ^b , A ^b , G ^b , F ^b , E ^b , D ^b	A ^b ♯, A ^b ♯, A ^b ♯
3	B ^b , A ^b , G ^b , F ^b , E ^b , D ^b	G ^b ♯, G ^b ♯, G ^b ♯

Handwritten musical score for the second system. The top staff is in treble clef with a key signature of one flat (B-flat) and a 3/4 time signature. The bottom staff is in bass clef with a 4/4 time signature. The music consists of three measures, each with a melodic line in the treble clef and a bass line in the bass clef. The notes and accidentals are as follows:

Measure	Treble Clef Notes	Bass Clef Notes
1	B ^b , A ^b , G ^b , F ^b , E ^b , D ^b	B ♯, B ♯, B ♯
2	B ^b , A ^b , G ^b , F ^b , E ^b , D ^b	A ♯, A ♯, A ♯
3	B ^b , A ^b , G ^b , F ^b , E ^b , D ^b	G ♯, G ♯, G ♯

Handwritten musical score for the first system. The top staff contains melodic lines with slurs and accents. The bottom staff contains chordal notation with accidentals (flats and sharps) and stems. A double bar line is present in the third measure.

Handwritten musical score for the second system. The top staff has a long slur with the word "dim" and a dotted line, ending with "pp". The bottom staff has complex chordal notation with accents and stems, ending with "pp" and "mp" markings.

Flöte Solo
 viel vibrato

pp = f = f =

> p p f = f =

Handwritten musical score for the first system. The treble clef staff contains three measures of music. The first measure starts with a *mf* dynamic and a *b* (flat) above the staff. The second measure has a *f* dynamic and a *b* above. The third measure has a circled *p* dynamic. The bass clef staff contains three measures of music. The first measure starts with a *mf* dynamic. The second measure has a *#* (sharp) above. The third measure has a circled *p* dynamic. There are various accidentals and slurs throughout the system.

Handwritten musical score for the second system. The treble clef staff contains two measures of music. The first measure starts with a *mf* dynamic. The second measure has a *f* dynamic. The bass clef staff contains two measures of music. The first measure starts with a *mf* dynamic. The second measure has a *f* dynamic. There are various accidentals and slurs throughout the system.

Handwritten musical score for the first system. The treble clef staff contains a melodic line with a wavy line at the beginning, a slur over the first two measures, and a fermata over the final note. The bass clef staff contains a bass line with a slur over the first two measures. A handwritten note "Flatterzunge" is written above the final measure of the treble staff. A double bar line is present between the second and third measures.

Handwritten musical score for the second system. The treble clef staff contains a melodic line with a slur over the first two measures and a fermata over the final note. The bass clef staff contains a bass line with a slur over the first two measures and a fermata over the final note. A double bar line is present between the second and third measures.

Handwritten musical score for the first system. The treble clef staff contains a melodic line with a key signature of one sharp (F#) and a 5/4 time signature. The bass clef staff contains chords with flats and naturals. The system is divided into two measures by a vertical bar line.

Handwritten musical score for the second system. The treble clef staff contains a melodic line with a key signature of three sharps (F#, C#, G#) and a 5/4 time signature. The bass clef staff contains chords with flats and naturals. The system is divided into two measures by a vertical bar line.

Handwritten musical score for Organ. The score is written on three staves. The top staff is labeled "ORGEL" and contains four measures of chords with wavy lines above them. The middle staff contains four measures of chords. The bottom staff contains four measures of rhythmic patterns, with the first measure marked "des" and a circled sharp sign. The key signature changes from one flat to two flats, then to two sharps, and finally to three sharps across the measures.

Handwritten musical score for Flute and Solo Bass. The score is written on two staves. The top staff contains three measures of melodic lines with slurs and wavy lines above them. The bottom staff contains three measures of rhythmic patterns. The key signature changes from one flat to two sharps across the measures.

Handwritten musical notation for the first system. It consists of a grand staff with a treble clef on the upper staff and a bass clef on the lower staff, and a separate bass line below. The grand staff contains three measures of music. The first measure has a key signature of two flats (B-flat and E-flat) and a 3/4 time signature. The second measure has a key signature of one flat (B-flat) and a 3/4 time signature. The third measure has a key signature of one sharp (F-sharp) and a 3/4 time signature. The bass line starts with a 3/4 time signature and a key signature of two flats, followed by a triplet of notes with fingerings 4, 2, and 3. The first two measures of the bass line have a whole rest, and the third measure has a whole note.

Handwritten musical notation for the second system. It consists of a grand staff with a treble clef on the upper staff and a bass clef on the lower staff, and a separate bass line below. The grand staff contains four measures of music. The first measure has a key signature of two sharps (F-sharp and C-sharp) and a 3/4 time signature. The second measure has a key signature of one sharp (F-sharp) and a 3/4 time signature. The third measure has a key signature of one flat (B-flat) and a 3/4 time signature. The fourth measure has a key signature of one flat (B-flat) and a 3/4 time signature. The bass line starts with a 3/4 time signature and a key signature of one sharp, followed by a triplet of notes with fingerings 4, 2, and 3. The first two measures of the bass line have a whole rest, and the third and fourth measures have whole notes.

Handwritten musical score for the first system. It consists of three staves. The top staff is in treble clef with a key signature of three sharps (F#, C#, G#) and a 4/4 time signature. It contains a whole note chord with a fermata. The middle staff is in alto clef with a key signature of three sharps and a 4/4 time signature, containing a whole note chord with a fermata. The bottom staff is in bass clef with a key signature of one sharp (F#) and a 4/4 time signature, containing a quarter-note triplet with a fermata. A long horizontal line with an arrow labeled 'cresc.' spans across the second and third staves. The dynamic 'pp' is written at the end of each staff.

Handwritten musical score for the second system. It consists of three staves. The top and middle staves are empty. The bottom staff is in bass clef with a key signature of one sharp (F#) and a 4/4 time signature, containing a quarter-note triplet with a fermata. The dynamic 'pp' is written at the beginning of the staff.

Flöte solo
 viel vibrato (pp)

Handwritten musical score for the first system. It consists of three staves. The top staff is for Flute, marked with a dynamic of *mf* and a *b* (flat) above the staff. The middle staff is for Solo Bass, marked with a dynamic of *p* (piano) below the staff. The bottom staff is for Schlagzeug (Jazz), marked with a dynamic of *f* (forte) below the staff. The notation includes various notes, rests, and accidentals (sharps and flats).

Handwritten musical score for the second system. It consists of three staves. The top staff is for Flute, marked with a dynamic of *mp* (mezzo-piano) below the staff. The middle staff is for Solo Bass, marked with a dynamic of *f* (forte) below the staff. The bottom staff is for Schlagzeug (Jazz), marked with a dynamic of *f* (forte) below the staff. The notation includes various notes, rests, and accidentals (sharps and flats).

Cresc... →

Handwritten musical notation for the first system. The treble clef staff contains a melodic line with a dynamic marking *mf* and a key signature change to one flat. The bass clef staff contains a harmonic line with a dynamic marking *f*. The system is divided into two measures by a vertical bar line.

Handwritten musical notation for the second system. The treble clef staff continues the melodic line with a dynamic marking *f* and a key signature change to two flats. The bass clef staff continues the harmonic line with a dynamic marking *f* and a triplet in the final measure. The system is divided into two measures by a vertical bar line.

Flatterz

Congal

pp

Handwritten musical score for the first system. It consists of three staves. The top two staves are for a grand staff (treble and bass clefs) and contain chords with dynamic marking *pp*. The bottom staff is a single treble clef staff containing a melodic line with a triplet of eighth notes and dynamic marking *pp*. The system is divided into four measures by vertical bar lines.

Handwritten musical score for the second system. It consists of three staves. The top two staves are for a grand staff and contain whole rests. The bottom staff is a single treble clef staff containing a melodic line with dynamic markings *ff* and *pp*. The system is divided into five measures by vertical bar lines.

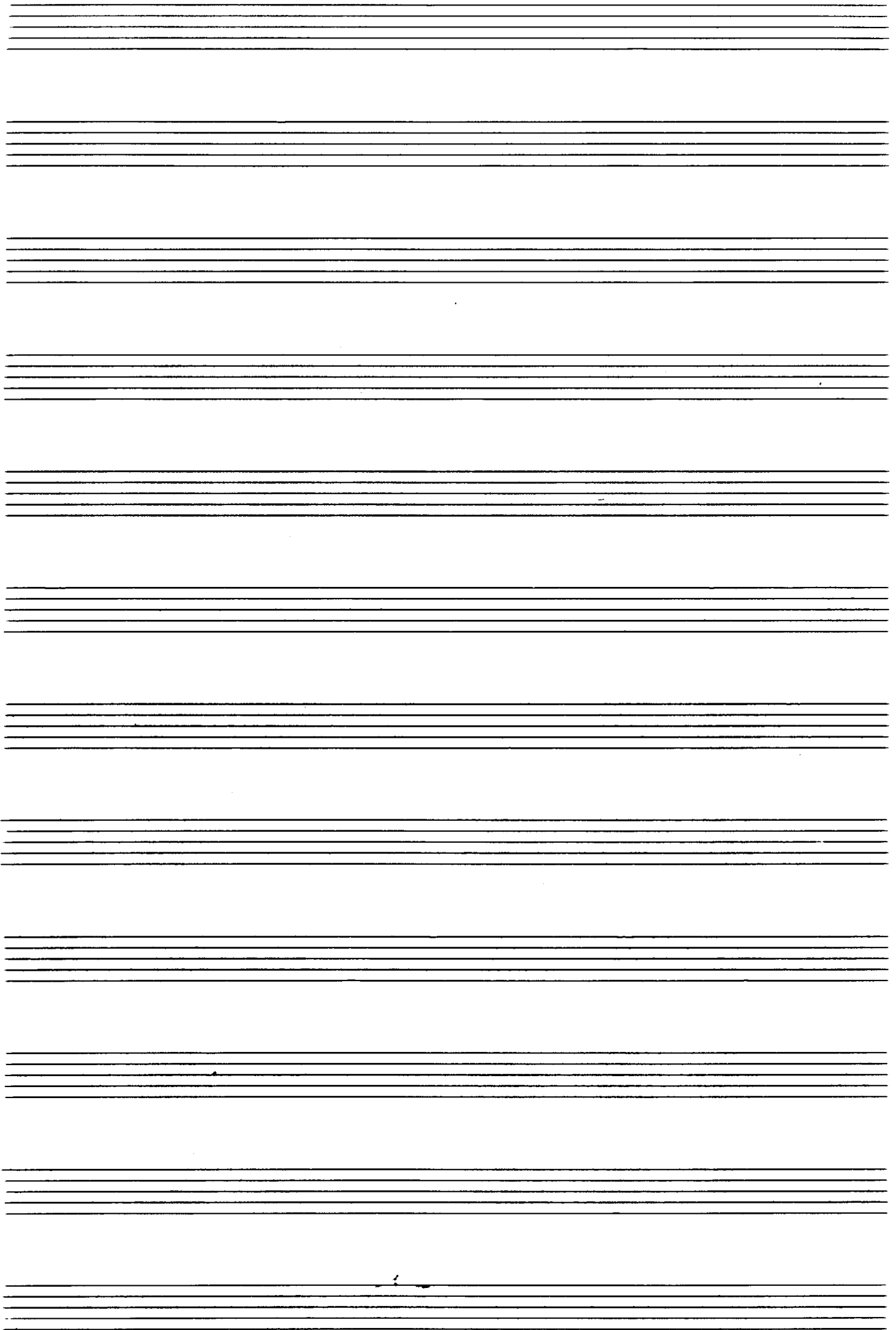
Handwritten musical score for the first system. It consists of three staves: a treble clef staff, a bass clef staff, and a piano staff. The treble and bass staves are connected by a brace on the left. The treble staff begins with a key signature of one sharp (F#) and contains several notes with accidentals, including a double sharp (F##). The bass staff also begins with a key signature of one sharp and contains notes with accidentals. The piano staff starts with a dynamic marking of 'ppp' and contains a few notes. A large slur covers the first two staves across the first four measures.

Handwritten musical score for the second system. It consists of three staves: a treble clef staff, a bass clef staff, and a piano staff. The treble and bass staves are connected by a brace on the left. The treble staff begins with a key signature of one sharp (F#) and contains several notes with accidentals, including a double sharp (F##). The bass staff also begins with a key signature of one sharp and contains notes with accidentals. The piano staff starts with a dynamic marking of 'ppp' and contains a few notes. A large slur covers the first two staves across the first four measures.

lange halten

Handwritten musical score for two staves. The top staff is in treble clef with a key signature of two sharps (F# and C#) and a 4/4 time signature. It contains several horizontal lines representing sustained notes. The bottom staff is in bass clef with a key signature of two sharps and a 4/4 time signature. It contains a melodic line with various notes, accidentals, and performance markings such as 'frei', 'ppp', and '3'.

Fin
Teil ①



Teil II.

$\text{♩} = \text{sol} \text{ normal}$

Handwritten musical notation for the first system. It features a treble clef and a 2/2 time signature. The music consists of four measures of chords. Above the first measure is the dynamic marking *pp*. Below the first measure is the instruction *sempre cresc...* with an arrow pointing to the right. The chords are: $\text{F}\sharp\text{2}\text{4}\text{5}\text{7}$, $\text{F}\sharp\text{2}\text{4}\text{5}\text{7}$, $\text{F}\sharp\text{2}\text{4}\text{5}\text{7}$, and $\text{F}\sharp\text{2}\text{4}\text{5}\text{7}$.

Handwritten musical notation for the second system. It features a treble clef and four measures of chords. The chords are: $\text{F}\sharp\text{2}\text{4}\text{5}\text{7}$, $\text{F}\sharp\text{2}\text{4}\text{5}\text{7}$, $\text{F}\sharp\text{2}\text{4}\text{5}\text{7}$, and $\text{F}\sharp\text{2}\text{4}\text{5}\text{7}$.

Handwritten musical notation for the third system. It features a treble clef and four measures of chords. The first measure has a dynamic marking *f*. The chords are: $\text{F}\sharp\text{2}\text{4}\text{5}\text{7}$, $\text{F}\sharp\text{2}\text{4}\text{5}\text{7}$, $\text{F}\sharp\text{2}\text{4}\text{5}\text{7}$, and $\text{F}\sharp\text{2}\text{4}\text{5}\text{7}$.

Handwritten musical notation for the fourth system. It features a treble clef and four measures of chords. The dynamic markings are *f*, *dim*, *p*, and *pp*. The chords are: $\text{F}\sharp\text{2}\text{4}\text{5}\text{7}$, $\text{F}\sharp\text{2}\text{4}\text{5}\text{7}$, $\text{F}\sharp\text{2}\text{4}\text{5}\text{7}$, and $\text{F}\sharp\text{2}\text{4}\text{5}\text{7}$.

Handwritten musical score for the first system. It consists of two staves: a treble clef staff on top and a bass clef staff on the bottom. The treble staff contains a melodic line with notes and rests, including a circled 'pp' dynamic marking. The bass staff contains a bass line with notes and rests, including a 'pp' dynamic marking. The system is divided into three measures by vertical bar lines.

Handwritten musical score for the second system. It consists of two staves: a treble clef staff on top and a bass clef staff on the bottom. The treble staff continues the melodic line from the first system. The bass staff continues the bass line from the first system. The system is divided into three measures by vertical bar lines.

Three empty musical staves at the bottom of the page, consisting of five-line staves without any notation.

chesc... →

Handwritten musical score for the first system. The top staff is in treble clef and contains a melodic line with notes and accidentals (flats and sharps) across three measures. The bottom staff is in bass clef and contains a bass line with notes and accidentals. Dynamic markings include a piano (*p*) marking in the first measure and a mezzo-forte (*mf*) marking in the second measure. The system concludes with a double bar line and repeat signs.

Handwritten musical score for the second system. The top staff is in treble clef and contains a melodic line with notes and accidentals across three measures. The bottom staff is in bass clef and contains a bass line with notes and accidentals. Dynamic markings include a mezzo-forte (*mf*) marking in the first measure and a forte (*f*) marking in the second measure. The system concludes with a double bar line and repeat signs.

Handwritten musical score for the first system. It consists of three staves: a piano staff (top), a bass staff (middle), and a bass staff (bottom). The piano staff begins with a treble clef, a key signature of one flat (B-flat), and a dynamic marking of *ff*. It contains four measures of music with chords and notes, including a fermata over the final measure. The bass staff contains notes and rests corresponding to the piano part. The bottom staff contains a few notes and rests.

Handwritten musical score for the second system. It consists of three staves: a piano staff (top), a bass staff (middle), and a bass staff (bottom). The piano staff begins with a treble clef, a key signature of one sharp (F-sharp), and contains four measures of music with a large wavy line indicating a glissando, labeled "Gliss". The bass staff contains notes and rests. The bottom staff contains notes and rests.

Handwritten musical notation for the first system. The system consists of two staves. The upper staff is in treble clef and contains three measures of music. The first measure starts with a forte dynamic marking 'f' and contains notes with flats. The second and third measures contain notes with sharps and flats, with a '3' written below the notes in the second measure. The lower staff is in bass clef and contains three measures of music. The first measure starts with a circled 'f' and contains notes with flats. The second and third measures contain notes with sharps and flats.

Handwritten musical notation for the second system. The system consists of two staves. The upper staff is in treble clef and contains three measures of music. The first measure contains notes with flats and sharps. The second and third measures contain notes with sharps and flats, with a '3' written below the notes in the second measure. The lower staff is in bass clef and contains three measures of music. The first measure contains notes with flats. The second and third measures contain notes with sharps and flats.

Handwritten musical score for the first system. It consists of three staves: a treble clef staff at the top, an alto clef staff in the middle, and a bass clef staff at the bottom. The music is written in a jazz-influenced style with various accidentals (sharps, flats, naturals) and stems. The first measure shows a melodic line in the treble clef and a bass line in the bass clef. The second and third measures continue the melodic and bass lines, with some notes beamed together and accidentals indicating chromatic movement.

Handwritten musical score for the second system. It continues the notation from the first system, with three staves (treble, alto, and bass clefs). The music features complex rhythmic patterns and chromatic lines. The second measure of this system has a prominent bass line with many notes. The third measure shows a melodic line in the treble clef with a sharp sign. The system concludes with a double bar line.

Handwritten musical notation for the first system. The top staff is a grand staff with treble and bass clefs. The piano part consists of chords in the right hand and notes in the left hand. The bass line is written on a single staff below the grand staff, featuring notes and accidentals.

Handwritten musical notation for the second system. It continues the grand staff and bass line from the first system. The piano part shows more complex chordal structures and melodic lines. The bass line continues with notes and accidentals.

Handwritten musical score for the first system. It consists of three staves. The top staff is in treble clef with a key signature of one sharp (F#) and contains two measures of music with notes and accidentals. The middle staff is in treble clef with a key signature of one sharp (F#) and contains two measures of music with notes and accidentals. The bottom staff is in bass clef with a key signature of one sharp (F#) and contains two measures of music with notes and accidentals.

Handwritten musical score for the second system. It consists of three staves. The top staff is in treble clef with a key signature of one sharp (F#) and contains two measures of music with notes and accidentals. The middle staff is in treble clef with a key signature of one sharp (F#) and contains two measures of music with notes and accidentals. The bottom staff is in bass clef with a key signature of one sharp (F#) and contains two measures of music with notes and accidentals.

Handwritten musical score for the first system, featuring three staves: Treble, Bass, and C-Bass. The Treble staff has a key signature of one flat and contains two measures of music with notes and rests. The Bass staff contains two measures of music with notes and rests. The C-Bass staff contains two measures of music with notes and rests. Brackets and slurs are used to group notes across measures.

Handwritten musical score for the second system, featuring three staves: Treble, Bass, and C-Bass. The Treble staff has a key signature of one flat and contains two measures of music with notes and rests. The Bass staff contains two measures of music with notes and rests. The C-Bass staff contains two measures of music with notes and rests. Brackets and slurs are used to group notes across measures. A circled 'p' is present in the Treble staff of the second measure.

Tempo cresc...

Handwritten musical score for the first system. The treble clef staff contains a melody with notes and accidentals, including a circled *pp* and a wedge-shaped dynamic marking. The bass clef staff contains chords, starting with *pp* and a wedge-shaped dynamic marking. The system is divided into three measures by vertical bar lines.

Handwritten musical score for the second system. The treble clef staff contains a melody with notes and accidentals, starting with a wedge-shaped dynamic marking. The bass clef staff contains chords, starting with a wedge-shaped dynamic marking. The system is divided into three measures by vertical bar lines.

cresc. →

mf

f

f

f

Guss

Handwritten musical notation for the first system, consisting of three staves. The top staff is in treble clef with a 3/2 time signature and contains a melodic line with a slur over the first two measures. The middle staff is in bass clef and contains a bass line with a key signature of two flats (B-flat and E-flat). The bottom staff is empty.

Handwritten musical notation for the second system, consisting of three staves. The top staff is in treble clef with a 3/2 time signature and contains a melodic line with a slur over the first two measures. The middle staff is in bass clef and contains a bass line with a key signature of two flats (B-flat and E-flat). The bottom staff is empty.

Handwritten musical score for the first system. The top staff is in treble clef and contains notes with accidentals (flats and sharps) and slurs. The bottom staff is in bass clef and contains rhythmic notation (vertical lines with stems) and accidentals. A key signature of one sharp (F#) is indicated on both staves. The system is divided into four measures by vertical bar lines.

Handwritten musical score for the second system, similar in structure to the first. It features a treble clef staff with notes and accidentals, and a bass clef staff with rhythmic notation and accidentals. A key signature of one sharp (F#) is indicated. The system is divided into four measures by vertical bar lines.

Handwritten musical notation for the first system. It consists of two staves. The upper staff contains two measures of music with chords and accidentals (sharps and naturals). The lower staff contains a bass line with notes and accidentals (sharps, naturals, and flats) across four measures.

Handwritten musical notation for the second system. It consists of two staves. The upper staff contains two measures of music with chords and accidentals (sharps and naturals). The lower staff contains a bass line with notes and accidentals (sharps, naturals, and flats) across four measures.

Handwritten musical score for the first system. The treble clef staff has a key signature of one sharp (F#). The bass clef staff has a key signature of one sharp (F#). The score consists of four measures. The first measure has a slur over the notes. The second measure has a fermata. The third measure has a slur over the notes. The fourth measure has a slur over the notes. The bass staff has a key signature change from F# to C major in the second measure.

Handwritten musical score for the second system. The treble clef staff has a key signature of one sharp (F#). The bass clef staff has a key signature of one sharp (F#). The score consists of six measures. The first two measures have a slur over the notes. The third and fourth measures have a slur over the notes. The fifth and sixth measures have a slur over the notes. The bass staff has a key signature change from F# to C major in the second measure.

Handwritten musical score for the first system. It consists of three staves: treble clef (top), alto clef (middle), and bass clef (bottom). The treble staff begins with a sharp sign and a note with an accent (^). A slur covers the first three measures, with a hairpin indicating a dynamic change from *dim* to *pp*. The alto staff has a sharp sign and a note with an accent (^). The bass staff contains rhythmic notation: $\flat 9 9 9$, $\flat 9 9 9$, $7 9 9 9$, $i \frac{3}{4}$, and $i \frac{3}{4}$. A hairpin in the bass staff indicates a dynamic change from *pp* to *pp*. There are also some handwritten marks like a bracket and a slash in the bass staff.

Two empty musical staves, one above the other, consisting of five lines each.

Handwritten musical score for the second system. It consists of three staves: treble clef (top), alto clef (middle), and bass clef (bottom). Each staff contains a single horizontal line representing a whole rest for the duration of the system.

Two empty musical staves, one above the other, consisting of five lines each.

Two empty musical staves, one above the other, consisting of five lines each.

p sempre cresc... →

Handwritten musical score for the first system. It consists of three staves: treble, alto, and bass. The treble staff begins with a treble clef and a circled 'p' dynamic marking. The first two measures contain eighth-note patterns with flats. The alto and bass staves contain quarter notes. The third measure of the treble staff is partially obscured by a vertical line. The system concludes with a double bar line.

Handwritten musical score for the second system. It consists of three staves: treble, alto, and bass. The treble staff begins with a treble clef and a circled 'p' dynamic marking. The first two measures contain eighth-note patterns with sharps. The alto and bass staves contain quarter notes. The third measure of the treble staff is partially obscured by a vertical line. The system concludes with a double bar line.

Handwritten musical notation for the first system, featuring a treble clef and a bass clef. The notation includes notes, rests, and accidentals (sharps and flats) across four measures.

Handwritten musical notation for the second system, featuring a treble clef and a bass clef. The notation includes notes, rests, and accidentals (sharps and flats) across four measures.

Handwritten musical notation for the first system, featuring a grand staff with treble and bass clefs. It contains three measures of music with square notes and stems. The bass line includes handwritten notes: ♯b ♯ ♯b ♯.

Handwritten musical notation for the second system, continuing the grand staff notation. The third measure includes diagonal hatching and the word "TREMOLO" written across the notes.

Handwritten musical score for the first system. It consists of three staves: a treble clef staff, a bass clef staff, and a drum staff. The treble staff contains two measures of music with notes and rests, followed by a bar line. The bass staff contains two measures of music with notes and rests, followed by a bar line. The drum staff contains two measures of music with rhythmic notation (vertical stems and flags), followed by a bar line. The key signature is one sharp (F#).

Handwritten musical score for the second system. It consists of three staves: a treble clef staff, a bass clef staff, and a drum staff. The treble staff contains two measures of music with notes and rests, followed by a bar line. The bass staff contains two measures of music with notes and rests, followed by a bar line. The drum staff contains two measures of music with rhythmic notation (vertical stems and flags), followed by a bar line. The key signature is one sharp (F#).

Handwritten musical score for the first system, consisting of three measures. The top staff is in treble clef, the middle in bass clef, and the bottom in bass clef. The notation includes notes, rests, and accidentals.

Handwritten musical score for the second system, consisting of three measures. The top staff is in treble clef, the middle in bass clef, and the bottom in bass clef. The notation includes notes, rests, and accidentals.

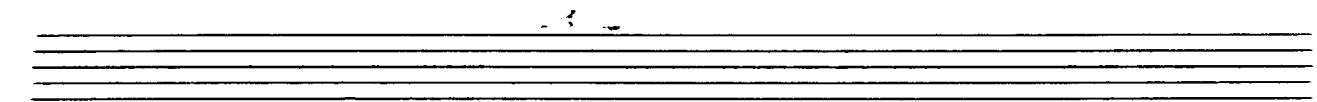
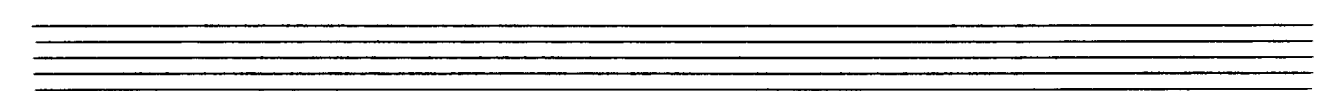
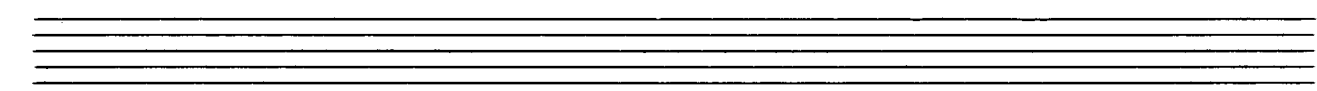
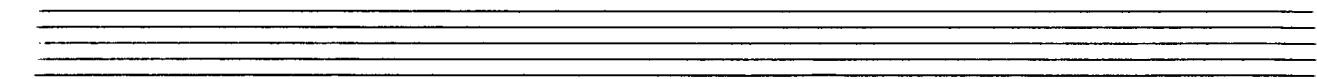
Schlagzeug Solo

Ten empty musical staves, each with a double bar line at the beginning and end, intended for a drum solo.

1x Schlagzeug - dim - - -
2x " crescendo und weiter (??)

Handwritten musical score for the first system. It consists of three staves: a grand staff (treble and alto clefs) and a bass staff. The music is written in a style that includes chords with various accidentals (sharps, flats, naturals) and rhythmic markings such as accents and slurs. The notation is somewhat sketchy and appears to be a working draft.

Handwritten musical score for the second system, continuing the notation from the first system. It features the same three-staff structure (grand staff and bass staff) with similar chordal and rhythmic notation, including various accidentals and markings.



Handwritten musical score for the first system. It consists of three staves: a treble clef staff at the top, a piano staff in the middle, and a bass clef staff at the bottom. The treble staff contains a melodic line with notes and accidentals, including a bracketed phrase. The piano staff shows chords and some melodic fragments. The bass staff contains a bass line with notes and accidentals. The system is divided into three measures by vertical bar lines.

Handwritten musical score for the second system. It consists of three staves: a treble clef staff at the top, a piano staff in the middle, and a bass clef staff at the bottom. The treble staff contains a melodic line with notes and accidentals, including a bracketed phrase and an arrow pointing right above the second measure. The piano staff shows chords and some melodic fragments. The bass staff contains a bass line with notes and accidentals. The system is divided into three measures by vertical bar lines.

Handwritten musical notation for the first system. The top staff is in treble clef with a key signature of one sharp (F#) and a 4/4 time signature. It contains three measures of music with notes and rests. The bottom staff is in bass clef and contains three measures of chords, with some notes written as stems with flags. A brace on the left side groups the two staves.

Handwritten musical notation for the second system. The top staff is in treble clef with a key signature of one sharp (F#) and a 4/4 time signature. It contains three measures of music with notes and rests, including some beamed notes. The bottom staff is in bass clef and contains three measures of chords, with some notes written as stems with flags. A brace on the left side groups the two staves.

Handwritten musical score for the first system. It consists of three staves: treble clef (top), alto clef (middle), and bass clef (bottom). The treble staff contains two measures of music with notes and a sharp sign (#). The alto staff contains two measures of music with notes. The bass staff contains two measures of music with notes and rests. Vertical bar lines separate the measures.

Handwritten musical score for the second system. It consists of three staves: treble clef (top), alto clef (middle), and bass clef (bottom). The treble staff contains two measures of music with notes. The alto staff contains two measures of music with notes. The bass staff contains two measures of music with notes and rests. Vertical bar lines separate the measures.

Handwritten musical score for the first system. It consists of two staves (treble and bass clefs) and a bass line. The music is written in a system of four measures. The first two measures show a melodic line in the treble clef with a flat key signature and a bass line with chords. The last two measures continue the melodic line and bass line.

Handwritten musical score for the second system. It consists of two staves (treble and bass clefs) and a bass line. The music is written in a system of four measures. The first two measures show a melodic line in the treble clef with a flat key signature and a bass line with chords. The last two measures show a wavy line in the treble clef, possibly representing a tremolo or a specific effect, and a bass line with chords.

Handwritten musical score for three staves. The top staff is in treble clef, the middle in alto clef, and the bottom in bass clef. It contains several measures of music with notes, accidentals, and dynamic markings like 'f' and 'z'.

|| (letzten 4 Takte nochmal) □

|| (letzten 4 Takte nochmal
größte Steigerung →) □

|| (letzten 4 Takte nochmal →) □

sehr lange halten

FIN

1967
Adolf
Scherbaum