



Sonate für

1967

für Klavier

Adolf Scherbaum

Allegro con brio

I

Handwritten musical notation for the first system, measures 1-2. The right hand (treble clef) contains quarter notes: G4, A4, B4, C5, D5, E5, F5, G5. The left hand (bass clef) contains a series of chords: G2-B2-D2, G2-B2-D2, G2-B2-D2, G2-B2-D2, G2-B2-D2, G2-B2-D2, G2-B2-D2, G2-B2-D2. A dynamic marking 'pp' is written above the first measure. A fermata is placed over the second measure of both staves.

Handwritten musical notation for the second system, measures 3-4. The right hand (treble clef) contains quarter notes: G4, A4, B4, C5, D5, E5, F5, G5. The left hand (bass clef) contains a series of chords: G2-B2-D2, G2-B2-D2, G2-B2-D2, G2-B2-D2, G2-B2-D2, G2-B2-D2, G2-B2-D2, G2-B2-D2. A dynamic marking 'mf' is written above the second measure. A fermata is placed over the second measure of both staves.

Handwritten musical notation for the third system, measures 5-6. The right hand (treble clef) contains quarter notes: G4, A4, B4, C5, D5, E5, F5, G5. The left hand (bass clef) contains a series of chords: G2-B2-D2, G2-B2-D2, G2-B2-D2, G2-B2-D2, G2-B2-D2, G2-B2-D2, G2-B2-D2, G2-B2-D2. A dynamic marking 'f' is written below the second measure. A fermata is placed over the second measure of both staves.

Handwritten musical notation for the first system. The treble clef contains a circled sharp sign (#). The bass clef contains a circled sharp sign (#). The notation includes notes with accents (^) and slurs, and a large horizontal line spanning across the system.

Handwritten musical notation for the second system. The treble clef contains notes with slurs and accents. The bass clef contains notes with slurs and accents. A large horizontal line spans across the system.

Handwritten musical notation for the third system. The treble clef contains a sharp sign (#) and notes with slurs and accents. The bass clef contains notes with slurs and accents. A large horizontal line spans across the system.

Handwritten musical notation for the fourth system. The treble clef contains a sharp sign (#) and notes with slurs and accents. The bass clef contains notes with slurs and accents. A large horizontal line spans across the system.

Handwritten musical notation for the first system. The treble staff contains a melodic line with a large slur above it, starting with a fermata. The bass staff contains a chordal accompaniment. A 'dim' marking is present in the treble staff.

Handwritten musical notation for the second system. The treble staff has a circled 'p' dynamic marking. The bass staff contains a melodic line with various accidentals.

Handwritten musical notation for the third system. The treble staff has a circled 'f' dynamic marking. The bass staff contains a melodic line with various accidentals.

Handwritten musical notation for the first system. The treble clef staff contains a sequence of notes: G4, Bb4, D5, F5, G5, with a slur over the last three notes. The bass clef staff contains notes: G3, Bb3, D4, F4, G4, with a slur over the last three notes. A circled sharp sign (#) is written above the treble staff. A large slur connects the end of the first measure to the beginning of the second measure. The second measure contains a complex sequence of notes with many accidentals (sharps and flats) and a circled sharp sign (#) above the staff.

Handwritten musical notation for the second system. The treble clef staff contains notes: G4, Bb4, D5, F5, G5, with a slur over the last three notes. The bass clef staff contains notes: G3, Bb3, D4, F4, G4, with a slur over the last three notes. A circled sharp sign (#) is written above the treble staff. A dynamic marking 'p' is written below the treble staff. A circled 'pp' is written below the bass staff. The word 'dim' is written above the treble staff.

Tempo cresc.

Handwritten musical notation for the third system. The treble clef staff contains a circled 'pp' and a horizontal line. The bass clef staff contains a complex chordal structure with many notes and accidentals, including a circled sharp sign (#) above the staff.

Handwritten musical notation for the first system. The right hand part features a wavy line with a circled 'f' and a fermata. The left hand part consists of a sequence of chords. A bracket spans the end of the system.

Handwritten musical notation for the second system. The right hand part features a wavy line with a circled 'ff' and a fermata. The left hand part consists of a sequence of chords. A bracket spans the end of the system.

Handwritten musical notation for the third system. The right hand part features a sequence of chords with a circled 'ff'. The left hand part consists of a sequence of chords. A bracket spans the end of the system.

Handwritten musical notation for the first system. The top staff is in treble clef and the bottom staff is in bass clef. The first measure contains chords with stems pointing down, with a sharp sign above the first chord. The second measure contains chords with stems pointing down, with a sharp sign above the first chord. The third measure contains chords with stems pointing down, with a sharp sign above the first chord. The fourth measure contains chords with stems pointing down, with a sharp sign above the first chord. The fifth measure contains chords with stems pointing down, with a sharp sign above the first chord. The sixth measure contains chords with stems pointing down, with a sharp sign above the first chord. The seventh measure contains chords with stems pointing down, with a sharp sign above the first chord. The eighth measure contains chords with stems pointing down, with a sharp sign above the first chord. The ninth measure contains chords with stems pointing down, with a sharp sign above the first chord. The tenth measure contains chords with stems pointing down, with a sharp sign above the first chord.

Handwritten musical notation for the second system. The top staff is in treble clef and the bottom staff is in bass clef. The first measure contains chords with stems pointing down, with a sharp sign above the first chord. The second measure contains chords with stems pointing down, with a sharp sign above the first chord. The third measure contains chords with stems pointing down, with a sharp sign above the first chord. The fourth measure contains chords with stems pointing down, with a sharp sign above the first chord. The fifth measure contains chords with stems pointing down, with a sharp sign above the first chord. The sixth measure contains chords with stems pointing down, with a sharp sign above the first chord. The seventh measure contains chords with stems pointing down, with a sharp sign above the first chord. The eighth measure contains chords with stems pointing down, with a sharp sign above the first chord. The ninth measure contains chords with stems pointing down, with a sharp sign above the first chord. The tenth measure contains chords with stems pointing down, with a sharp sign above the first chord.

Handwritten musical notation for the third system. The top staff is in treble clef and the bottom staff is in bass clef. The first measure contains chords with stems pointing down, with a sharp sign above the first chord. The second measure contains chords with stems pointing down, with a sharp sign above the first chord. The third measure contains chords with stems pointing down, with a sharp sign above the first chord. The fourth measure contains chords with stems pointing down, with a sharp sign above the first chord. The fifth measure contains chords with stems pointing down, with a sharp sign above the first chord. The sixth measure contains chords with stems pointing down, with a sharp sign above the first chord. The seventh measure contains chords with stems pointing down, with a sharp sign above the first chord. The eighth measure contains chords with stems pointing down, with a sharp sign above the first chord. The ninth measure contains chords with stems pointing down, with a sharp sign above the first chord. The tenth measure contains chords with stems pointing down, with a sharp sign above the first chord.

Handwritten musical notation for the first system. The treble staff contains two measures of music with complex chordal structures, featuring various accidentals (sharps, flats, naturals) and slurs. The bass staff contains a few notes in the first measure, followed by three measures of rests indicated by double slashes.

Handwritten musical notation for the second system. The treble staff contains two measures of music with complex chordal structures, featuring various accidentals and slurs. The bass staff contains two measures of music with complex chordal structures, featuring various accidentals and slurs.

Handwritten musical notation for the third system. The treble staff contains a wavy line, possibly indicating a tremolo or a specific performance instruction, with the word "din" written above it. The bass staff contains three measures of rests indicated by double slashes.

sempre forte.

Handwritten musical notation for the first system. It consists of two staves. The upper staff is in treble clef and contains three measures of music. The first measure has a circled 'pp' dynamic marking. The notes are: D4 (quarter), E4 (quarter), F#4 (quarter), G4 (quarter). The second measure has notes: G4 (quarter), F#4 (quarter), E4 (quarter), D4 (quarter). The third measure has notes: D4 (quarter), E4 (quarter), F#4 (quarter), G4 (quarter). The lower staff is in bass clef and contains three measures of music. The first measure has notes: G3 (quarter), F#3 (quarter), E3 (quarter), D3 (quarter). The second measure has notes: G3 (quarter), F#3 (quarter), E3 (quarter), D3 (quarter). The third measure has notes: G3 (quarter), F#3 (quarter), E3 (quarter), D3 (quarter). A long slur covers the first two measures of both staves.

Handwritten musical notation for the second system. It consists of two staves. The upper staff is in treble clef and contains three measures of music. The first measure has notes: D4 (quarter), E4 (quarter), F#4 (quarter), G4 (quarter). The second measure has notes: G4 (quarter), F#4 (quarter), E4 (quarter), D4 (quarter). The third measure has notes: D4 (quarter), E4 (quarter), F#4 (quarter), G4 (quarter). The lower staff is in bass clef and contains three measures of music. The first measure has notes: G3 (quarter), F#3 (quarter), E3 (quarter), D3 (quarter). The second measure has notes: G3 (quarter), F#3 (quarter), E3 (quarter), D3 (quarter). The third measure has notes: G3 (quarter), F#3 (quarter), E3 (quarter), D3 (quarter). A long slur covers the first two measures of both staves.

Handwritten musical notation for the third system. It consists of two staves. The upper staff is in treble clef and contains four measures of music. The first measure has a circled 'mp' dynamic marking and notes: D4 (quarter), E4 (quarter), F#4 (quarter), G4 (quarter). The second measure has notes: G4 (quarter), F#4 (quarter), E4 (quarter), D4 (quarter). The third measure has notes: D4 (quarter), E4 (quarter), F#4 (quarter), G4 (quarter). The fourth measure has notes: G4 (quarter), F#4 (quarter), E4 (quarter), D4 (quarter). The lower staff is in bass clef and contains four measures of music. The first measure has notes: G3 (quarter), F#3 (quarter), E3 (quarter), D3 (quarter). The second measure has notes: G3 (quarter), F#3 (quarter), E3 (quarter), D3 (quarter). The third measure has notes: G3 (quarter), F#3 (quarter), E3 (quarter), D3 (quarter). The fourth measure has notes: G3 (quarter), F#3 (quarter), E3 (quarter), D3 (quarter). A long slur covers the first two measures of both staves. A circled 'mp' dynamic marking is also present in the fourth measure of the upper staff.

Lento (sehr ruhig)

Handwritten musical notation for the first system. The right hand part features a melodic line with a sharp key signature and a sequence of notes: G4, A4, B4, C5, B4, A4, G4, F4, E4, D4, C4. The left hand part consists of two chords: G4-B4-D4 and G4-B4-D4. Dynamics include a forte (f) marking and an accent (>) over the final notes.

(auf Achtel)

(auf Achtel)

Handwritten musical notation for the second system. The right hand part has a 6/8 time signature and a sequence of notes: G4, A4, B4, C5, B4, A4, G4, F4, E4, D4, C4. The left hand part has a 4/4 time signature and consists of two chords: G4-B4-D4 and G4-B4-D4. Dynamics include a pianissimo (ppp) marking and an accent (>) over the final notes.

Handwritten musical notation for the third system. The right hand part has a sharp key signature and a sequence of notes: G4, A4, B4, C5, B4, A4, G4, F4, E4, D4, C4. The left hand part has a 4/4 time signature and consists of two chords: G4-B4-D4 and G4-B4-D4. Dynamics include a pianissimo (ppp) marking and an accent (>) over the final notes. The text "poco rit" is written below the staff.

Prestissimo

Handwritten musical notation for the first system. It features a treble clef and a 2/8 time signature. A circled '777' is written next to the time signature. The melody consists of several notes with accidentals: a quarter note with a sharp, followed by a quarter note with a flat, a quarter note with a flat, and a quarter note with a flat and a sharp. The system is marked with a blue slur and includes two blue square symbols on the bass line.

Handwritten musical notation for the second system. It features a treble clef. The melody consists of several notes with complex accidentals, including sharps and flats. The system is marked with a blue slur and includes two blue square symbols on the bass line.

Handwritten musical notation for the third system. It features a treble clef and a 1/8 time signature. The melody consists of several notes with complex accidentals, including sharps and flats. The system is marked with a blue slur and includes four blue square symbols on the bass line.

lento

dim rit...

D.C. al ϕ

Coda

Handwritten musical notation for the first system. It features a treble clef with a circled sharp sign (#) and a common time signature. The right hand has notes with accents (^) and slurs. The left hand has chords with a sharp sign (#) and various note values.

Handwritten musical notation for the second system. The right hand has a melodic line with accents (^) and slurs. The left hand has chords and notes with various accidentals and slurs.

Handwritten musical notation for the third system. It includes a 3x repeat sign over a section of the right hand. The left hand has a complex rhythmic pattern with many notes and slurs.

lunga

Handwritten musical notation on a grand staff. The notation includes treble and bass clefs, two sharps (F# and C#), and rhythmic markings such as vertical lines and a large curved line. The word "lunga" is written above the staff.

Handwritten musical notation for the first system. The treble staff contains a sequence of notes with slurs and dynamic markings such as p and $>$. The bass staff contains a series of notes with slurs and dynamic markings.

Handwritten musical notation for the second system. The treble staff features a long slur over several notes, with dynamic markings like p and $>$. The bass staff contains rhythmic patterns with notes and rests.

Handwritten musical notation for the third system. The treble staff has a large slur over a group of notes, with dynamic markings like p and $>$. The bass staff contains notes and rests.

Handwritten musical notation for the fourth system. The treble staff contains notes and rests with dynamic markings like p and $>$. The bass staff contains notes and rests.

Handwritten musical notation for the first system. It consists of two staves. The upper staff contains a melodic line with notes and accidentals, starting with a *pp* dynamic marking. The lower staff contains a bass line with chords. A handwritten *cresc* marking with an arrow is positioned above the first staff. A vertical line separates the system into two measures.

Handwritten musical notation for the second system, also consisting of two staves. The upper staff continues the melodic line, and the lower staff continues the bass line. A handwritten *cresc* marking with an arrow is positioned above the second measure. A vertical line separates the system into two measures.

Handwritten musical notation for the third system, consisting of two staves. The upper staff features a melodic line with a slur over the first two measures and a *pp* dynamic marking. The lower staff features a bass line with a slur over the first two measures. A vertical line separates the system into two measures.

Four empty musical staves at the bottom of the page, intended for further notation.

Handwritten musical notation for the first system. The treble clef has a circled 'F' and the bass clef has a circled 'F'. The music consists of a melodic line with a slur and a bass line with a series of chords.

pesante (oder breit)

Handwritten musical notation for the second system. The treble clef has a circled 'F#'. The music consists of a melodic line with a slur and a bass line with a series of chords.

Handwritten musical notation for the third system. The treble clef has a circled 'F#'. The music consists of a melodic line with a slur and a bass line with a series of chords.

Handwritten musical notation for the fourth system. The treble clef has a circled 'p' and the word 'din' is written below. The music consists of a melodic line with a slur and a bass line with a series of chords.

Tempo $\text{\textcircled{a}}$ sehr ruhig

Handwritten musical notation for the first system. The treble clef staff contains a circled 'pp' dynamic marking and a series of notes with accidentals, including a sharp sign. The bass clef staff contains a few notes, including a flat sign.

Handwritten musical notation for the second system. The treble clef staff features a long slur over a series of notes with various accidentals. The bass clef staff contains notes and accidentals, including a sharp sign.

Handwritten musical notation for the third system. The treble clef staff features a long slur over a series of notes with various accidentals. The bass clef staff contains notes and accidentals, including a flat sign.

Handwritten musical notation for the first system. The treble clef part contains a complex melodic line with many accidentals and slurs. The bass clef part has a simple accompaniment with two chords: a D minor chord (D, F, A) and a C major chord (C, E, G).

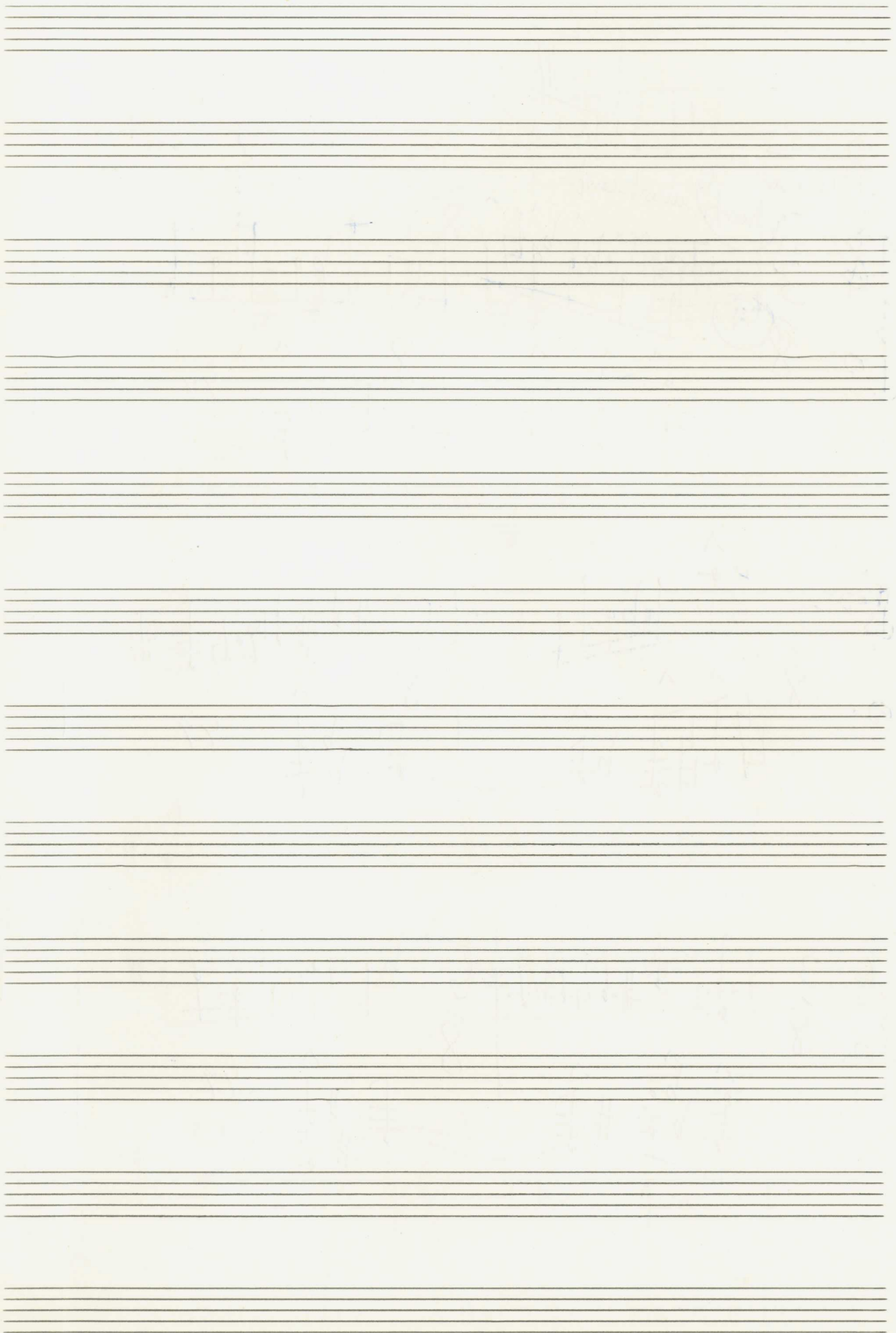
Handwritten musical notation for the second system. The treble clef part continues the melodic line with slurs and some scribbled-out notes. The bass clef part has two chords: a D minor chord (D, F, A) and a C major chord (C, E, G).

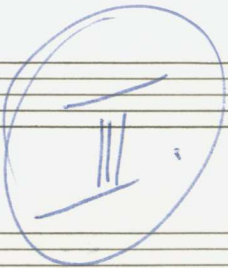
Handwritten musical notation for the third system. The treble clef part starts with a dynamic marking of *pp* and ends with *pppp*. The bass clef part has a simple accompaniment with a slur over the notes.

Handwritten musical notation for the fourth system. The treble clef part has a wavy line indicating a *poco rit.* (rhythm). The bass clef part has a melodic line with slurs and accidentals. A circled *D.C.* (Da Capo) marking is present at the end of the system.

Handwritten musical notation for the first system. The notation includes a treble clef, a circled 'C' with a colon, and the dynamic marking 'ppp'. The melody consists of a series of half notes with flat signs and fermatas. Above the staff, there is a circled 'gr.' and the words 'güt dir' written in a cursive hand.

Handwritten musical notation for the second system. The notation includes a treble clef, a circled 'C' with a colon, and the dynamic marking 'ppp'. The melody consists of a series of half notes with flat signs and fermatas. The piece ends with a double bar line.





Presto

hant

markant

Handwritten musical notation for the first system. The treble staff contains notes with accents and slurs, and a final measure with a complex chord structure. The bass staff contains a sequence of notes with slurs and accents.

Handwritten musical notation for the second system. The treble staff features chords with accents and slurs. The bass staff continues with notes and slurs.

Handwritten musical notation for the third system. The treble staff has notes with slurs and accents. The bass staff features chords with accents and slurs.

Handwritten musical notation for the fourth system. The treble staff has notes with slurs and accents. The bass staff includes dynamic markings 'din' and 'p' in circles, along with notes and slurs.

Handwritten musical notation for the first system. It consists of two staves. The upper staff is in treble clef with a 3/8 time signature. The lower staff is in bass clef with a 3/8 time signature. The key signature has one flat (B-flat). The first measure of the upper staff contains a circled 'p' and a circled 'ES' above the notes. The second measure of the upper staff has a circled '5' above it. The lower staff contains chordal accompaniment with a circled 'p' and a circled '5' above it.

Handwritten musical notation for the second system, continuing the piece. It features two staves in treble and bass clefs, 3/8 time, and one flat key signature. The notation includes melodic lines and chordal accompaniment with various articulation marks.

Handwritten musical notation for the third system. The upper staff has a circled '3' above it. The lower staff has a circled '5' above it. The notation includes melodic lines and chordal accompaniment with various articulation marks.

Handwritten musical notation for the fourth system. The upper staff has a circled '3' above it. The lower staff has a circled '5' above it. The notation includes melodic lines and chordal accompaniment with various articulation marks and a circled 'H' at the end.

Handwritten musical notation for the first system. The treble clef staff contains notes with various accidentals (sharps, naturals) and slurs. The bass clef staff contains notes with flats and naturals. A circled sharp sign (#) is present in the first measure. The system concludes with two measures of sustained chords indicated by horizontal lines and vertical stems.

Handwritten musical notation for the second system. The treble clef staff features notes with naturals and flats, and slurs. The bass clef staff contains notes with naturals and flats. The system concludes with two measures of sustained chords indicated by horizontal lines and vertical stems.

Handwritten musical notation for the third system. The treble clef staff shows notes with naturals and flats, and a circled sharp sign (#). The bass clef staff contains notes with flats and naturals, and a circled 'pp' dynamic marking. The system concludes with two measures of sustained chords indicated by horizontal lines and vertical stems.

Handwritten musical notation for the fourth system. The treble clef staff contains notes with naturals and flats, and a circled sharp sign (#). The bass clef staff contains notes with naturals and flats, and a circled sharp sign (#). The system concludes with a double bar line and the marking 'D.C.' (Da Capo).

Handwritten musical notation for the first system. The top staff is in treble clef and contains a series of notes with various accidentals (sharps, flats, naturals). A circled sharp sign (#) is written below the first measure. The bottom staff is in bass clef and contains chords and single notes, some with accidentals.

Handwritten musical notation for the second system. The top staff continues the melodic line with notes and accidentals. The bottom staff continues the harmonic accompaniment with chords and single notes.

Handwritten musical notation for the third system. The top staff features a circled 'pp' (pianissimo) dynamic marking. The bottom staff shows a more active bass line with notes and accidentals.

Handwritten musical notation for the fourth system. The top staff concludes with a circled sharp sign (#). The bottom staff ends with a circled sharp sign (#) and the text "Die. al" (Ad libitum) next to a fermata symbol.

Handwritten musical notation for the first system. The treble clef staff begins with a circled sharp sign (#) and a 3/8 time signature. The bass clef staff has a 3/8 time signature. The notation includes various notes, rests, and accidentals, with some notes marked with accents (^).

Handwritten musical notation for the second system. The treble clef staff starts with a circled sharp sign (#) and a 3/8 time signature. The bass clef staff has a 3/8 time signature. The notation includes various notes, rests, and accidentals, with some notes marked with accents (^).

Handwritten musical notation for the third system. The treble clef staff has a 3/8 time signature. The bass clef staff has a 3/8 time signature. The notation includes various notes, rests, and accidentals, with some notes marked with accents (^).

Handwritten musical notation for the fourth system. The treble clef staff has a circled sharp sign (#) and a 3/8 time signature. The bass clef staff has a 3/8 time signature. The notation includes various notes, rests, and accidentals, with some notes marked with accents (^). The system ends with the word "fine" and a circled sharp sign (#).

1967
 Scherbaum