

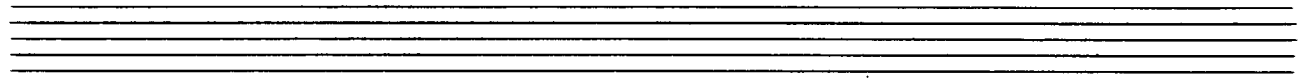
Sonate für 1967
Klavier

Notenheft

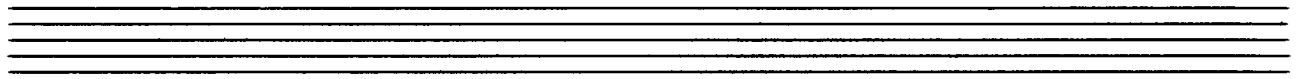
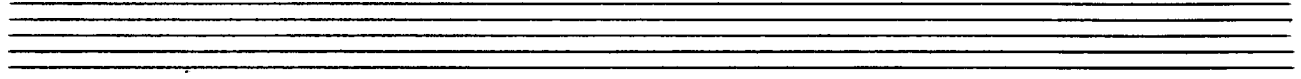
Sonatine 1967

für Klavier

Adolf Scherbaum



Alllegro moderato



Handwritten musical notation for the first system. The treble clef staff contains a melodic line with notes G4, A4, B4, C5, D5, E5, F5, G5, with slurs and accents. The bass clef staff contains a bass line with notes G3, A3, B3, C4, D4, E4, F4, G4, with slurs and accents. Dynamic markings include p and pp . The word "din" is written above the bass staff.

Handwritten musical notation for the second system. The treble clef staff contains a melodic line with notes G4, A4, B4, C5, D5, E5, F5, G5, with slurs and accents. The bass clef staff contains a bass line with notes G3, A3, B3, C4, D4, E4, F4, G4, with slurs and accents. Dynamic markings include p and pp . The word "rit" is written above the bass staff.

Handwritten musical notation for the third system. The treble clef staff contains a melodic line with notes G4, A4, B4, C5, D5, E5, F5, G5, with slurs and accents. The bass clef staff contains a bass line with notes G3, A3, B3, C4, D4, E4, F4, G4, with slurs and accents. Dynamic markings include pp . The word "ruhig" is written above the treble staff.

Handwritten musical notation for the fourth system. The treble clef staff contains a melodic line with notes G4, A4, B4, C5, D5, E5, F5, G5, with slurs and accents. The bass clef staff contains a bass line with notes G3, A3, B3, C4, D4, E4, F4, G4, with slurs and accents. Dynamic markings include pp .

Tempo 1.

Hart staccato

Sehr ruhig

Lento

Tempo ①

The image displays a handwritten musical score for piano, organized into three systems of staves. The first system features a right-hand melodic line with notes G4, A4, B4, C5, and D5, and a left-hand bass line with notes F#3, G3, and A3. The second system continues the melodic line with a repeat sign and includes a circled plus sign in the left hand. The third system is a grand staff with a treble clef and a bass clef, showing a sequence of chords and notes. The score includes various musical notations such as notes, rests, slurs, and dynamic markings.

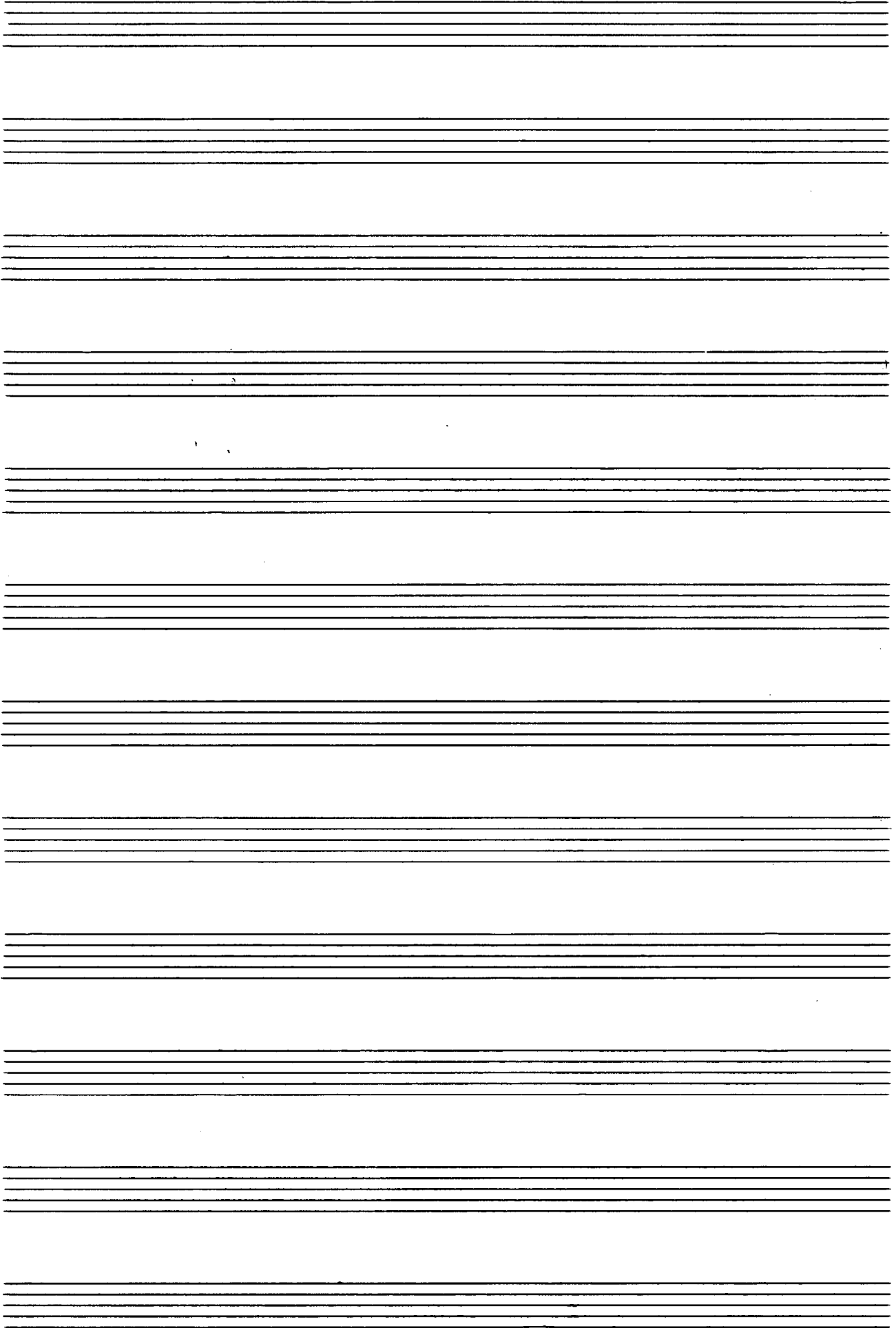
Handwritten musical notation for the first system, consisting of two staves. The upper staff has two measures with notes and accents. The lower staff has three measures with chords and accents.

Handwritten musical notation for the second system, consisting of two staves. The lower staff has lyrics "dies" and "mit + dich" written below it.

Handwritten musical notation for the third system, consisting of two staves. The upper staff has the word "ruhig" written above it. The lower staff has a circled "p" and other markings.

♩ Eoda (Tempo 1)

Handwritten musical score for two staves. The top staff is in treble clef and the bottom in bass clef. The music is in 3/4 time. The first measure of the top staff has a dynamic marking 'pp' and a sharp sign. The second measure has a flat sign. The bottom staff has a sharp sign in the first measure, a flat sign in the second, and a flat sign in the third. There are various musical notations including notes, rests, and fingerings.



2

lento (so ruhig als möglich)

Handwritten musical notation for the first system. The upper staff is in treble clef and contains a melodic line with slurs and accents. The lower staff is in bass clef and contains a harmonic accompaniment with chords and some slurs. A dynamic marking 'mf' is present in the second measure of the upper staff.

Handwritten musical notation for the second system. The upper staff is in treble clef and contains a melodic line with slurs and accents. The lower staff is in bass clef and contains a harmonic accompaniment with chords and some slurs. A dynamic marking 'f' is present in the second measure of the upper staff.

Handwritten musical notation for the third system. The upper staff is in treble clef and contains a melodic line with slurs and accents. The lower staff is in bass clef and contains a harmonic accompaniment with chords and some slurs. A dynamic marking 'ff' is present in the first measure of the upper staff.

Handwritten musical notation for the first system. It consists of two empty staves at the top, followed by a system with a treble clef and a bass clef. The notation includes various notes, accidentals, and dynamic markings like 'p' and 'f'. There are also some handwritten annotations above the staves, including a 'b' and a 'V'.

so ruhig als möglich

Handwritten musical notation for the second system. It features a treble clef and a bass clef. The notation includes notes, accidentals, and dynamic markings like 'p'. There are also some handwritten annotations, including a circled 'p' and some symbols.

Handwritten musical notation for the third system. It features a treble clef and a bass clef. The notation includes notes, accidentals, and dynamic markings like 'pp'. There are also some handwritten annotations, including a circled 'p' and a 'V'.

Handwritten musical notation on a grand staff. The notation includes a treble clef with a circled '2', a bass clef with a circled '1', and the dynamic marking 'ppp'. Above the treble staff are the notes 'C', 'D', 'D'. Below the bass staff are the notes 'C', 'D', '1', '0', '7' with an '8' below the first note. A large, loopy scribble is present on the right side of the staff.

3

sehr marsch und leicht

Handwritten musical notation for the first system, measures 1-2. Treble clef, 6/8 time signature, pp dynamics. Treble staff contains notes G4, A4, B4, C5, B4, A4, G4. Bass staff contains notes G3, A3, B3, C4, B3, A3, G3.

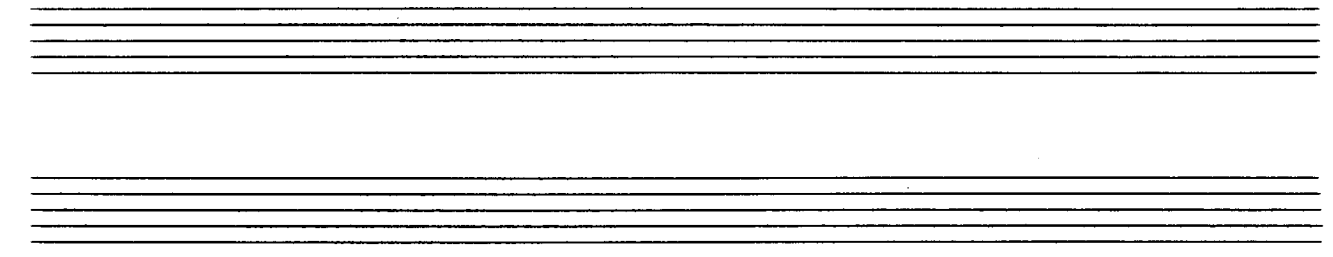
Handwritten musical notation for the second system, measures 3-4. Treble clef, 6/8 time signature. Treble staff contains notes G4, A4, B4, C5, B4, A4, G4. Bass staff contains notes G3, A3, B3, C4, B3, A3, G3.

Handwritten musical notation for the third system, measures 5-6. Treble clef, 6/8 time signature. Treble staff contains notes G4, A4, B4, C5, B4, A4, G4. Bass staff contains notes G3, A3, B3, C4, B3, A3, G3.

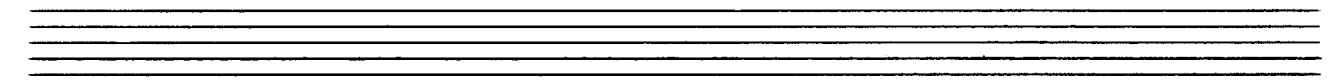
Handwritten musical notation for the first system, consisting of two staves. The upper staff contains several chords with accidentals (sharps and flats) and slurs. The lower staff contains a melodic line with slurs and a circled 'f' dynamic marking.

Handwritten musical notation for the second system, consisting of two staves. The upper staff features a wavy line and a circled 'f' dynamic marking. The lower staff contains a melodic line with slurs and a circled 'f' dynamic marking. The system concludes with a 'pp' dynamic marking.

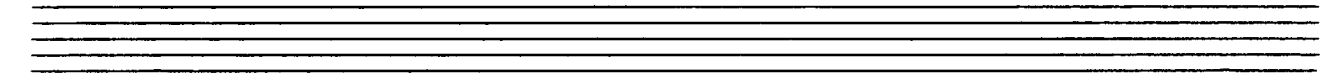
Handwritten musical notation for the third system, consisting of two staves. The upper staff contains a melodic line with slurs and a circled 'f' dynamic marking. The lower staff contains a melodic line with slurs and a circled 'f' dynamic marking. The system concludes with a 'pp' dynamic marking.



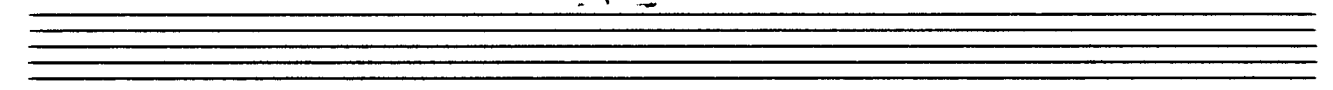
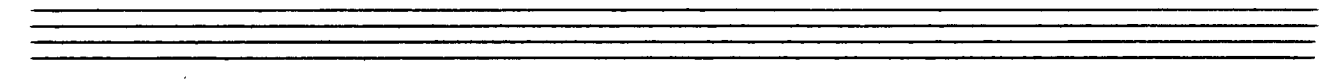
Handwritten musical notation on two staves. The upper staff is in treble clef and begins with a *pp* dynamic marking. The lower staff is in bass clef. The notation includes notes, rests, and slurs. Above the upper staff, the word "cuere" is written with a dashed line and an arrow pointing to the right.



Handwritten musical notation on two staves. The upper staff is in treble clef and the lower staff is in bass clef. The notation includes notes, rests, and slurs.



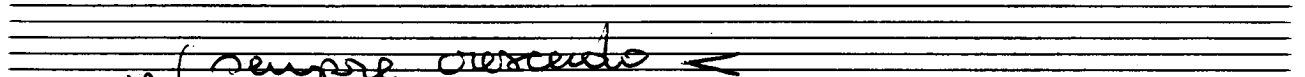
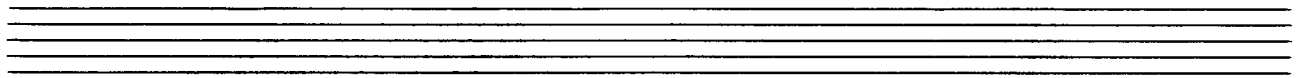
Handwritten musical notation on two staves. The upper staff is in treble clef and the lower staff is in bass clef. The notation includes notes, rests, and slurs. A *mf* dynamic marking is present in the upper staff.



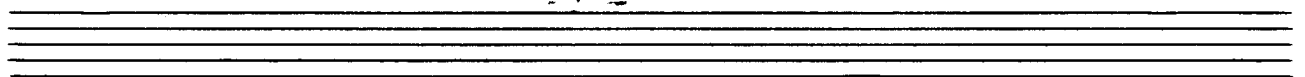
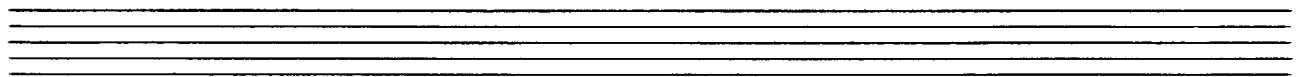
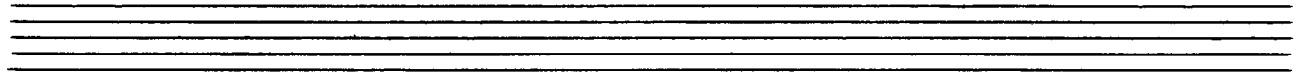
Handwritten musical score for the first system. The top staff is in treble clef and the bottom staff is in bass clef. The music consists of several measures with notes, accidentals (sharps), and dynamic markings. A circled sharp sign is present in the second measure of the top staff. There are also various accents and slurs throughout the system.

Handwritten musical score for the second system. The top staff is in treble clef and the bottom staff is in bass clef. The music continues with notes and accidentals (flats and sharps). A circled sharp sign is visible in the second measure of the top staff.

Handwritten musical score for the third system. The top staff is in treble clef and the bottom staff is in bass clef. The music includes notes, accidentals, and dynamic markings such as 'pp'. A circled sharp sign is present in the second measure of the top staff. The word 'cluster' is written below the first measure of the bottom staff.



pp (*sempre crescendo* <)



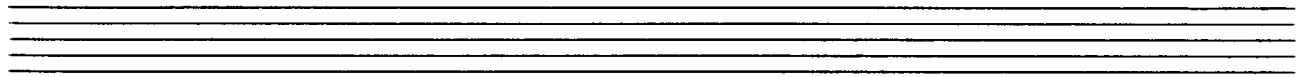
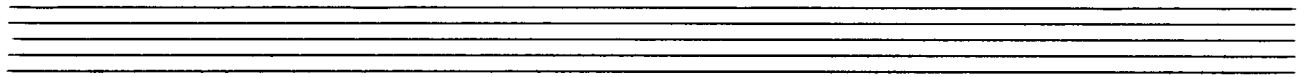
Handwritten musical notation for the first system. It features a treble clef and a circled 'F' with a sharp sign. The music includes chords and melodic lines with slurs and accents.

Handwritten musical notation for the second system. It features a treble clef and a circled 'F' with a sharp sign. It includes chords and melodic lines with slurs and accents.

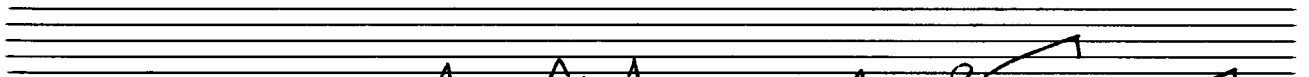
Handwritten musical notation for the third system. It features a treble clef and a circled 'F' with a sharp sign. It includes chords and melodic lines with slurs and accents.

Handwritten musical notation for the fourth system. It features a treble clef and a circled 'F' with a sharp sign. It includes chords and melodic lines with slurs and accents.

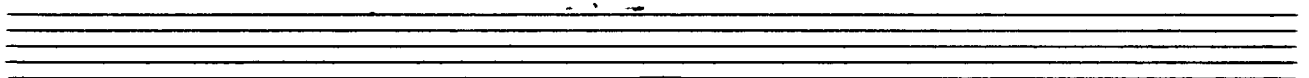
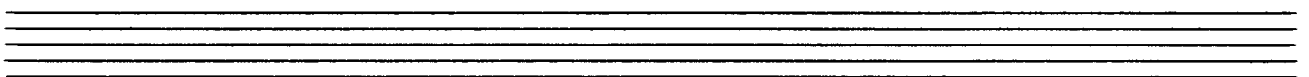
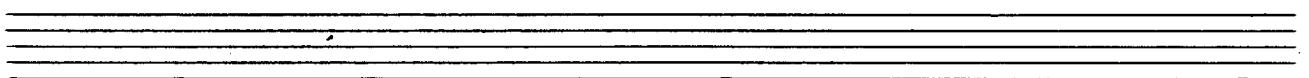
P.c.
ohne
||:|
bis
hierher
dann
weiter



Handwritten musical notation for the first system. It consists of two staves. The upper staff is in treble clef and contains a circled *ppp* dynamic marking and a fermata. The lower staff is in bass clef and contains three measures of music with notes marked with *p* and *f* dynamics, and a circled *8* marking. A large slur encompasses both staves.



Handwritten musical notation for the second system. It consists of two staves. The upper staff is in treble clef and contains a circled *f* dynamic marking, the word *crescendo*, and several measures of music with notes marked with accents and a circled *8* marking. The lower staff is in bass clef and contains three measures of music with notes marked with *f* and *8* markings. A large slur encompasses both staves.



Handwritten musical score for a piano sonata by Adolf Scherbaum. The score is written on a grand staff with treble and bass clefs. It includes a key signature of two flats (B-flat and E-flat), a circled "Fine" marking, and a signature "Adolf Scherbaum" at the end of the piece. The notation includes various notes, rests, and dynamic markings.