

Sonatinen
Klavier

1967

Notenheft



Sonatine 1967

für Klavier

Adolf Scherbaum

Allegro moderato

Handwritten musical notation for the first system. The treble clef staff begins with a 4/4 time signature and a circled 'p' dynamic marking. The melody consists of quarter notes: F4, G4, A4, B4, C5, B4, A4, G4, F4. The bass clef staff contains a series of quarter notes: C3, C3, C3, C3, D3, D3, D3, D3, E3, E3, E3, E3. A slur covers the first two measures of the bass line.

Handwritten musical notation for the second system. The treble clef staff continues the melody with quarter notes: E4, F4, G4, A4, B4, C5, B4, A4, G4, F4. A circled 'p' dynamic marking is present. The bass clef staff contains quarter notes: C3, C3, C3, C3, D3, D3, D3, D3, E3, E3, E3, E3. A slur covers the first two measures of the bass line. A circled 'mf' dynamic marking is placed above the bass staff.

Handwritten musical notation for the third system. The treble clef staff continues the melody with quarter notes: E4, F4, G4, A4, B4, C5, B4, A4, G4, F4. A circled 'p' dynamic marking is present. The bass clef staff contains quarter notes: C3, C3, C3, C3, D3, D3, D3, D3, E3, E3, E3, E3. A slur covers the first two measures of the bass line. The system concludes with a final chord in the treble clef staff: C5, B4, A4, G4, F4, E4, D4, C4.

Handwritten musical notation for the first system. The treble clef staff contains a melodic line with notes G4, A4, B4, C5, D5, E5, F5, G5, with various accidentals and slurs. The bass clef staff contains accompaniment with notes G3, A3, B3, C4, D4, E4, F4, G4, with accidentals and slurs. Dynamic markings include *pp* and *ppp*.

Handwritten musical notation for the second system. The treble clef staff contains a melodic line with notes G4, A4, B4, C5, D5, E5, F5, G5, with various accidentals and slurs. The bass clef staff contains accompaniment with notes G3, A3, B3, C4, D4, E4, F4, G4, with accidentals and slurs. Dynamic markings include *p* and *pp*.

Handwritten musical notation for the third system. The treble clef staff contains a melodic line with notes G4, A4, B4, C5, D5, E5, F5, G5, with various accidentals and slurs. The bass clef staff contains accompaniment with notes G3, A3, B3, C4, D4, E4, F4, G4, with accidentals and slurs. Dynamic markings include *pp* and *ppp*.

Handwritten musical notation for the fourth system. The treble clef staff contains a melodic line with notes G4, A4, B4, C5, D5, E5, F5, G5, with various accidentals and slurs. The bass clef staff contains accompaniment with notes G3, A3, B3, C4, D4, E4, F4, G4, with accidentals and slurs. Dynamic markings include *pp* and *ppp*.

Tempo 1.

Handwritten musical notation for the first system, measures 1-2. The top staff is in treble clef and the bottom staff is in bass clef. Measure 1 contains a piano (p) dynamic marking and a *cresc.* instruction. The melody in the treble clef consists of quarter notes: G4, A4, B4, C5, with slurs and accents. The bass clef accompaniment consists of quarter notes: G3, A3, B3, C4. Measure 2 continues the melody with quarter notes: D5, E5, F5, G5, also with slurs and accents. The bass clef accompaniment continues with quarter notes: D4, E4, F4, G4. A *cresc.* instruction is written above the treble clef staff.

Handwritten musical notation for the second system, measures 3-4. The top staff is in treble clef and the bottom staff is in bass clef. Measure 3 contains a piano (p) dynamic marking. The melody in the treble clef consists of quarter notes: G4, A4, B4, C5, with slurs and accents. The bass clef accompaniment consists of quarter notes: G3, A3, B3, C4. Measure 4 continues the melody with quarter notes: D5, E5, F5, G5, also with slurs and accents. The bass clef accompaniment continues with quarter notes: D4, E4, F4, G4. A p dynamic marking is written above the treble clef staff.

Handwritten musical notation for the third system, measures 5-6. The top staff is in treble clef and the bottom staff is in bass clef. The instruction "Hart staccato" is written above the treble clef staff. Measure 5 contains a piano (p) dynamic marking. The treble clef staff has quarter notes: G4, A4, B4, C5. The bass clef staff has quarter notes: G3, A3, B3, C4. Measure 6 continues with quarter notes: D5, E5, F5, G5 in the treble clef and quarter notes: D4, E4, F4, G4 in the bass clef. A piano (p) dynamic marking is written above the treble clef staff.

Handwritten musical notation for the fourth system, measures 7-8. The top staff is in treble clef and the bottom staff is in bass clef. Measure 7 contains a piano (p) dynamic marking. The treble clef staff has quarter notes: G4, A4, B4, C5. The bass clef staff has quarter notes: G3, A3, B3, C4. Measure 8 continues with quarter notes: D5, E5, F5, G5 in the treble clef and quarter notes: D4, E4, F4, G4 in the bass clef. A piano (p) dynamic marking is written above the treble clef staff.

Sehr ruhig

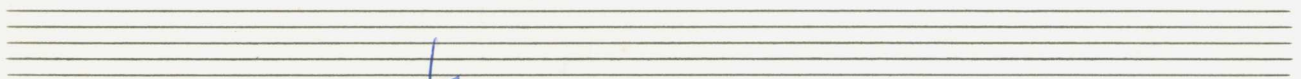
rit >

Lento

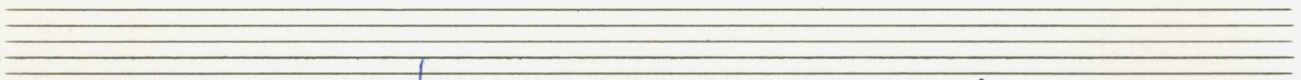
ppp

Tempo ①

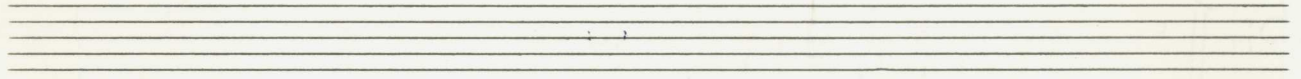
pp



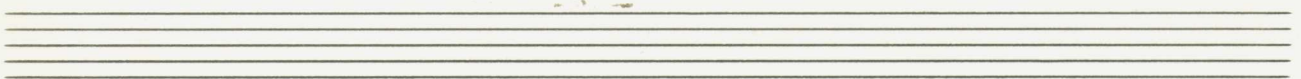
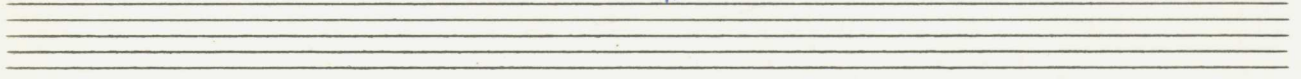
Handwritten musical notation for the first system. The right hand (RH) part begins with a treble clef, a key signature of one sharp (F#), and a dynamic marking of *mp*. The first measure contains a half note chord with notes B2, D3, and F#3. The second measure contains a half note chord with notes G3, B3, and D4. The third measure contains a half note chord with notes A3, C4, and E4. A slur covers these three measures. The left hand (LH) part begins with a bass clef and a key signature of one sharp (F#). The first measure contains a half note chord with notes F#2 and C3. The second measure contains a half note chord with notes G2 and D3. A slur covers these two measures. A large blue arrow points from the first measure of the RH part to the first measure of the LH part.



Handwritten musical notation for the second system. The RH part continues with the same three-measure phrase as in the first system. The LH part continues with the same two-measure phrase as in the first system. A double bar line separates the two systems.



Handwritten musical notation for the third system. The RH part contains four measures of chords: F#2-C3, G2-D3, A2-E3, and B2-F#3. The LH part contains four measures of chords: F#2-C3, G2-D3, A2-E3, and B2-F#3. A double bar line separates the two systems.



Handwritten musical notation on two staves. The top staff contains two measures with notes and accents. The bottom staff contains two measures with chords and a circled 'P'.

Handwritten musical notation on two staves. The top staff has a treble clef and notes. The bottom staff has notes and the word "dir".

Handwritten musical notation on two staves. The top staff has notes and the word "ruhig". The bottom staff has notes and the word "al".

☒ CODA (Tempo 1)

The handwritten musical notation consists of two staves. The top staff begins with a treble clef and a dynamic marking of *pp*. It contains a half note with a sharp sign (#) and a quarter note with a flat sign (b). A large blue bracket spans across these two notes. The bottom staff begins with a bass clef and a dynamic marking of *ppp*. It contains a half note with a sharp sign (#), a quarter note with a flat sign (b), and a quarter note with a flat sign (b) and a sharp sign (#). There are also some scribbles and a large bracket under the first staff.



2

lento (so ruhig als möglich)

Handwritten musical notation for the first system of a piano sonata. It consists of two staves. The upper staff is in treble clef and contains a melodic line with a slur over the first two measures and a fermata over the third. The lower staff is in bass clef and contains a bass line with a slur over the first two measures and a fermata over the third. The key signature has two sharps (F# and C#). Dynamics include 'mf' and 'f'.

Handwritten musical notation for the second system of a piano sonata. It consists of two staves. The upper staff is in treble clef and contains a melodic line with a slur over the first two measures and a fermata over the third. The lower staff is in bass clef and contains a bass line with a slur over the first two measures and a fermata over the third. The key signature has two sharps (F# and C#). Dynamics include 'f'.

Handwritten musical notation for the third system of a piano sonata. It consists of two staves. The upper staff is in treble clef and contains a melodic line with a slur over the first two measures and a fermata over the third. The lower staff is in bass clef and contains a bass line with a slur over the first two measures and a fermata over the third. The key signature has two sharps (F# and C#). Dynamics include 'ff'.

Handwritten musical notation for the first system, featuring two staves with notes, accidentals, and dynamic markings.

so ruhig als möglich

Handwritten musical notation for the second system, featuring two staves with notes, accidentals, and dynamic markings.

Handwritten musical notation for the third system, featuring two staves with notes, accidentals, and dynamic markings.

Handwritten musical notation on a page of ten staves. The notation is located on the second and third staves from the top. It includes a treble clef on the second staff, a circled '2' with a colon, the dynamic marking 'ppp', and a circled '2'. To the right of these symbols are the notes 'C D D' on the second staff and 'C D D' on the third staff. Below the third staff, there is a bracketed sequence of notes: '8 | 0 | 1 | 0 | 7'. A large, stylized blue scribble is drawn across the right side of the second and third staves, overlapping the notes.

3

sehr marsch und leicht

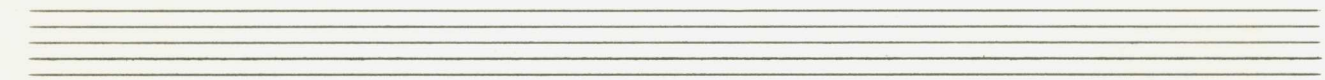
Handwritten musical notation for the first system, measures 1-2. Treble clef, 6/8 time signature, pp dynamics. The right hand has a melodic line with slurs and accents, and the left hand has a simple accompaniment pattern.

Handwritten musical notation for the second system, measures 3-5. Treble clef, 6/8 time signature. The right hand has a melodic line with slurs and accents, and the left hand has a simple accompaniment pattern.

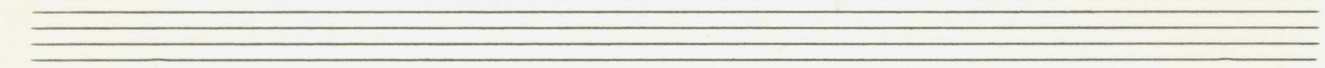
Handwritten musical notation for the third system, measures 6-8. Treble clef, 6/8 time signature. The right hand has a melodic line with slurs and accents, and the left hand has a simple accompaniment pattern.



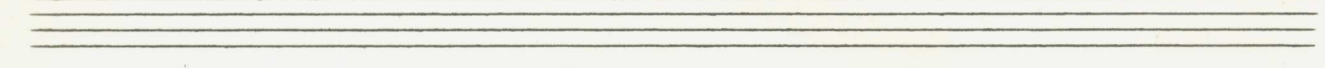
Handwritten musical notation for the first system. The right staff is in treble clef and begins with a *pp* dynamic marking. The left staff is in bass clef. Above the right staff, the word "cresc." is written with a dashed line and an arrow pointing to the right. The notation includes notes, rests, and dynamic markings.



Handwritten musical notation for the second system. The right staff continues the melody with notes and rests. The left staff provides accompaniment with chords and rhythmic patterns. The notation is in blue ink.



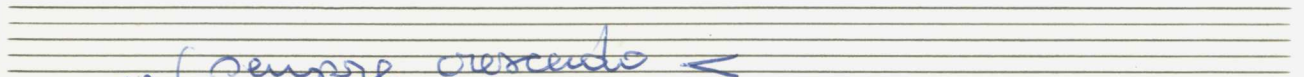
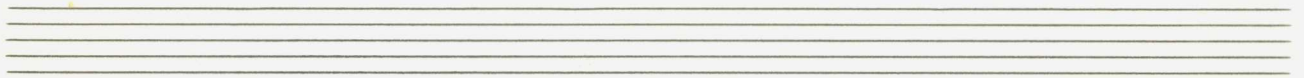
Handwritten musical notation for the third system. The right staff features a melodic line with a *mp* dynamic marking. The left staff has a bass line with chords. The notation includes various musical symbols and dynamics.



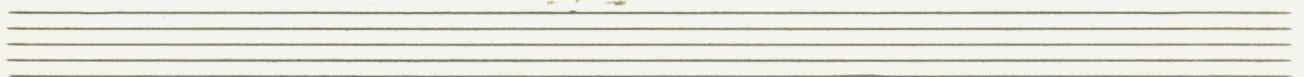
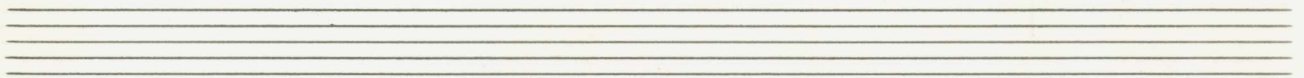
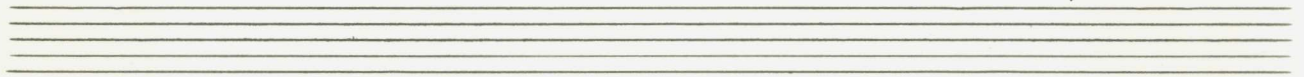
Handwritten musical notation for the first system. The top staff is in treble clef and the bottom staff is in bass clef. The music consists of several measures with notes, accidentals (sharps), and dynamic markings. A forte dynamic 'f' is written in the first measure, followed by 'f=' in the second. There are also accents (^) and a circled sharp sign (#) in the second measure. The system ends with a fermata-like symbol.

Handwritten musical notation for the second system. The top staff is in treble clef and the bottom staff is in bass clef. The music features melodic lines with various accidentals (flats and naturals) and dynamic markings. The system ends with a fermata-like symbol.

Handwritten musical notation for the third system. The top staff is in treble clef and the bottom staff is in bass clef. The treble staff contains a wavy line. The bass staff has a cluster of notes, with the word 'cluster' written below it. There is a sharp sign (#) in the first measure and a piano-piano dynamic 'pp' in the third measure. The system ends with a fermata-like symbol.



pp (sempre crescendo <

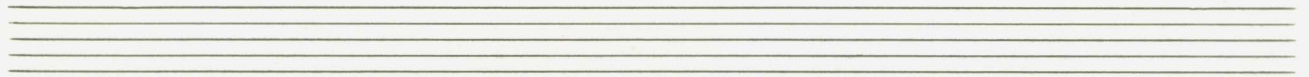


Handwritten musical notation for the first system. The treble clef staff begins with a circled 'F' and contains chords. The bass clef staff contains a melodic line with a slur across the first two measures.

Handwritten musical notation for the second system. The treble clef staff contains chords and a circled 'F'. The bass clef staff contains a melodic line with a slur and a sharp sign.

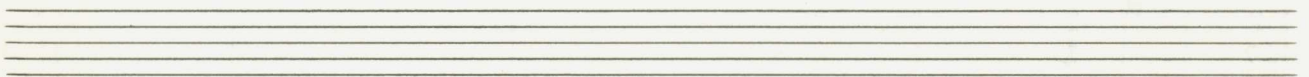
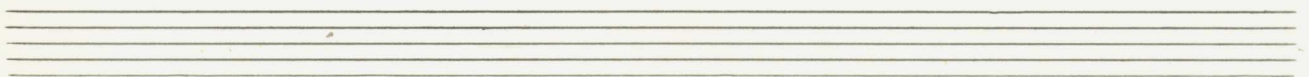
Handwritten musical notation for the third system. The treble clef staff contains chords and a circled 'F'. The bass clef staff contains a melodic line with a slur and the word "Clustern" written above it.

Handwritten musical notation for the fourth system. The treble clef staff contains chords and a circled 'F'. The bass clef staff contains a melodic line with a slur and the word "dim" written below it. The word "pp" is written below the treble staff. A handwritten note on the right side reads "p.c. ohne hierher dünn weiter".



Handwritten musical notation on a grand staff. The upper staff is in treble clef and contains a circled *pp* dynamic marking and a fermata. The lower staff is in bass clef and contains three measures of music, each with a circled *p* dynamic marking and a fermata. A large blue slur encompasses the entire system.

Handwritten musical notation on a grand staff. The upper staff is in treble clef and contains a circled *f* dynamic marking, the word *crescendo*, and several measures of music with accents and slurs. The lower staff is in bass clef and contains three measures of music with circled *f* dynamic markings and slurs. A large blue slur encompasses the entire system.



Handwritten musical score for piano, consisting of a treble and bass clef. The key signature is two flats (B-flat and E-flat). The score includes several measures of music with notes, rests, and dynamic markings. A circled word "Fine" is written above the music, indicating the end of the piece. The signature "Adolf Scherbaum" is written below the music.