

Klavier Soli
Adolf Lehmann
1967

Notenheft

I.

Prestissimo

Handwritten musical notation for the first system, measures 1-4. The top staff is in treble clef with a 3/4 time signature. The bottom staff is in bass clef with a 4/4 time signature. The music features chords and melodic lines with accents and slurs.

Handwritten musical notation for the second system, measures 5-8. The notation continues with chords and melodic lines, including a circled '1' at the end of the system.

Handwritten musical notation for the third system, measures 9-12. This system features a large slur over the top staff and complex chordal textures in both staves.

System 2, measures 1-3. Treble clef with a slur over the first three measures. Bass clef accompaniment. Dynamic markings include 'b.o.' and 'pp.'

System 3, measures 4-7. Treble clef with slurs and accents. Bass clef accompaniment with accents.

System 4, measures 8-10. Treble clef with a slur over measures 8-10. Bass clef accompaniment with accents.

System 5, measures 11-14. Treble clef with slurs and accents. Bass clef accompaniment with accents. Ends with 'FIN'.

II.

Prestissimo

①

pp
3
8
(sehr leicht)

Pedal

②

Pedal

③

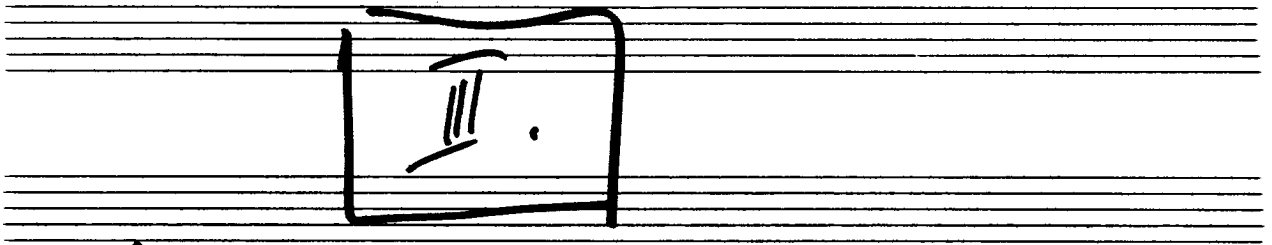
③

Handwritten musical score for the first system. It consists of a grand staff with treble and bass clefs. The upper staff has a melodic line with a slur and a 'Gloss' annotation. The lower staff has a bass line with a 'Pedal' marking. A large slur arches over the top of the system.

Handwritten musical score for the second system. It consists of a grand staff with treble and bass clefs. The upper staff has a melodic line with a slur and a circled '4' at the end. The lower staff has rhythmic markings.

Handwritten musical score for the third system. It consists of a grand staff with treble and bass clefs. The upper staff has a melodic line with a slur and a circled '5' at the end. The lower staff has rhythmic markings.

Handwritten musical score for the fourth system. It consists of a grand staff with treble and bass clefs. The upper staff has a melodic line with a slur and a circled '2' at the end. The lower staff has rhythmic markings. The system ends with a double bar line and the word 'FIN.'



sehr
ruhig

Handwritten musical notation on a grand staff. The right hand part begins with a treble clef and a 5-measure rest. The left hand part starts with a bass clef, a 4-measure rest, and a circled *pp* dynamic marking. The notation includes various notes, rests, and accidentals, with some notes beamed together.

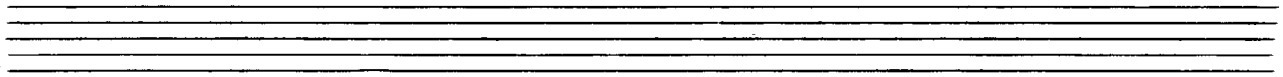
Handwritten musical notation on a grand staff. The right hand part features a treble clef and a series of notes with slurs and accents. The left hand part includes a bass clef, a circled *pp* dynamic marking, and notes with slurs. A circled number 3 is written at the end of the system.

Handwritten musical notation on a grand staff. The right hand part has a treble clef and notes with slurs and accents. The left hand part includes a bass clef, a circled *ppp* dynamic marking, and notes with slurs. A circled number 4 is written at the end of the system, followed by the word "FIN". A bracket labeled "Pedal" spans the bottom of the left hand part, and the word "grz." is written below it.

4.

Presto

Tocatta



Block B-bis [8]

Block [B] Block [B]

BL. [B] BL. [B]



sehr ruhig

(wie Glocken)

①

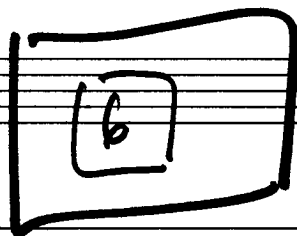
②

③

4

5

6



breit

Handwritten musical notation for the first system, featuring two staves (treble and bass clef) with notes and stems, including accents (^) and a circled '1' at the end.

frei (Engl.-horn Solo)

Handwritten musical notation for the second system, featuring two staves (treble and bass clef) with notes and stems, including slurs and accents, and a circled '2' at the end.

Handwritten musical notation for the third system, featuring two staves (treble and bass clef) with notes and stems, including accents (^) and a circled '3' at the end.

(oboe solo) (Flöte solo)

(frei)

pp

4

1. Fassung (lange)

pppp Pedal

(wie ein HAUCH)

pppp

7777

5

Pesante

6/4

7777

8

C-dur

C-dur

8

FIN

6



Prestissimo

(*sempre cresc. bis fff*)

①

②

③

④

8

lang frei (und langsam)

ppp

ppp

basso continuo

Empire Pedal bis

ppp

1

ppp

ppp

2

presente

③

ppp

cresce

cresc...

Ped.

④

Ped.

⑤

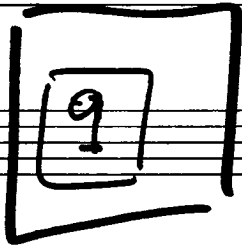
Ped.

Fin

Fin

ppp

Sehr langsam (graves)



①

viel ein Werkel

Prestissimo

pp 2

②

③

④

⑤

⑥

dir

D.C.

Sehr ruhig und langsam

gr. rit + dir

pp

(lange...)

FIN

☒ = mit Metallstift
Saiten ausreißbar! ☒

10

sehr langsam und frei

☒

pp frei

Pedal
bis Fin.

frei

frei

x x x x xx xxx x

8/ M

frei

Presto

lange klängen bis pp

Pedal

perante

Pedal

frei

M

3x

Presto

①

cresc →

②

3

4

5

FIN

12

Sehr langsam (auf 4 Schläge)

①

4 pp i
16
(düster - 4 Schläge)

②

②

③

③

4

5

6

rit.

ppp

FIN

13

Presto

Handwritten musical score for the first system, measures 1-4. It features a treble and bass clef with a 2/2 time signature. The first two measures show chords with accents. The third measure has a circled 'pp' dynamic marking. The fourth measure contains a melodic line with slurs and accents.

①

Handwritten musical score for the second system, measures 5-8. It continues the melodic and harmonic development from the first system, with various slurs and accents.

②

③

Handwritten musical score for the third system, measures 9-12. It includes a circled '3' at the end of the system and some rhythmic markings like 'y 4/4'.

④

dim

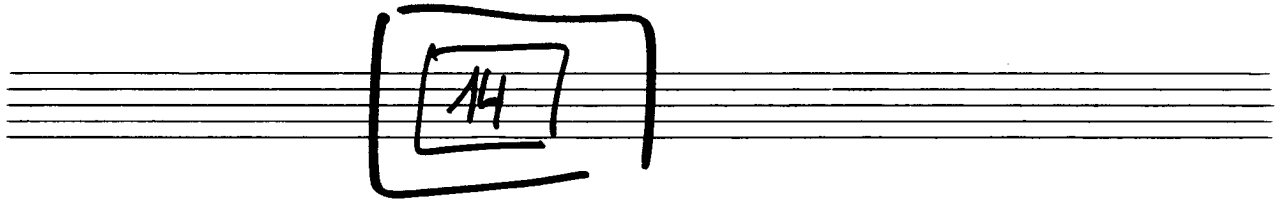
Handwritten musical score for the fourth system, measures 13-16. It features a circled '4' at the end and a 'dim' marking. The music includes chords and a melodic line with slurs.

5

6

7

Cresc.



*Prestissimo (so rasch wie möglich
sempre stacc.)*

①

②

3

4

Fin.

15

sehr ruhig — langsam

①

PEDAL bis 4) von 4 bis Fine wieder Pedal)

②

③

sempre cresc... → bis ffff (dann sempre dim - bis ppp)

16

so schnell wie möglich

leicht

pp

p

Gliss

1

pp

p

mf

2

3

breit

pp

mf

3

FIN

17

Maestoso | sehr weit - sehr langsam + breit

②

FIN.

(2. x 7#)

: pp \leftarrow sempre cresc. \vee

③

④

D.C.

18

Sehr Rasch (Presto)

Tanzartig

Handwritten musical notation for the first system. It consists of two staves: a treble clef staff and a bass clef staff. The key signature has one sharp (F#). The time signature is 4/4. The first measure of the treble staff contains a circled '4' and a circled '2/2' with 'ppp' written below it. The notation includes various notes, rests, and slurs, with accents (^) placed over several notes. The bass staff contains chords and single notes.

von Anfang bis [2] BLOCK [A]

1

Handwritten musical notation for the second system, continuing from the first. It features two staves with treble and bass clefs. The notation includes notes, rests, and slurs, with accents (^) over notes. The bass staff shows chordal accompaniment.

Handwritten musical notation for the third system. It consists of two staves with treble and bass clefs. The notation includes notes, rests, and slurs, with accents (^) over notes. The bass staff contains chords and single notes.

Handwritten musical notation for the first system, consisting of two staves. The top staff is in treble clef and the bottom staff is in bass clef. The music features a melodic line with slurs and accents, and a bass line with chords and slurs. A circled number '2' is in the top right corner.

Handwritten musical notation for the second system, consisting of two staves. The top staff is labeled 'Aufbau' and the bottom staff is labeled 'Beginn'. The music is divided into seven measures, each labeled 'Block A' or 'Bl. A'. The dynamics range from ppp to f. A large arrow points from the end of the system to the right.

Handwritten musical notation for the third system, consisting of two staves. The top staff is labeled '1' through '7' and the bottom staff is labeled 'ppp', 'pp', 'p', 'mf', 'f', 'ff', 'ff'. A large arrow points from the end of the system to the right.

Handwritten musical notation for the fourth system, consisting of two staves. The top staff is labeled 'Solists' and the bottom staff is labeled 'ppp'. The music features a melodic line with slurs and accents, and a bass line with chords and slurs.

Handwritten musical notation for the fifth system, consisting of two staves. The top staff is labeled '1' through '7' and the bottom staff is labeled 'ppp'. The music features a melodic line with slurs and accents, and a bass line with chords and slurs. The system ends with a double bar line and the word 'FINE'.

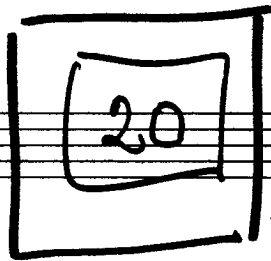
19

So rasch als möglich) sempre stacc.

Handwritten musical notation for the first system, measures 1-2. The music is in 2/2 time, with a treble clef and a key signature of one flat (B-flat). The right hand plays a melody with accents (^) over the notes. The left hand plays a bass line with a 7th fret marking.

Handwritten musical notation for the second system, measures 3-4. The notation continues from the first system, with a first ending bracket labeled '1' at the end of measure 4.

Handwritten musical notation for the third system, measures 5-6. The notation continues from the second system, with a second ending bracket labeled '2' at the end of measure 6.



Glück zu haben, ist
Himmels Gunt;
es recht zu genießen, ist
Menschkenntnis!

(Hausinschrift aus
Rohrbach.)

sehr ruhig

Handwritten musical notation for the first system. The treble staff contains a melodic line with slurs and a key signature change to two sharps. The bass staff contains a bass line with notes, rests, and dynamic markings including *d.* and *pp*.

Handwritten musical notation for the second system. The treble staff begins with a key signature change to two sharps and includes the marking *d.e.*. The bass staff features a series of notes with dynamic markings *d.* and *pp*.

Handwritten musical notation for the third system. The treble staff includes the marking *rit----*. The bass staff contains notes with dynamic markings *d.*, *bd.*, and *pp*.

Handwritten musical notation for the fourth system. The bass staff ends with the marking *FIN.* and *ppp*. The treble staff contains notes with dynamic markings *d.* and *ppp*.

21

Presto (tempo fff) so rasch wie möglich

1

hart

2

3

hart

Handwritten musical notation for system 4. It consists of two staves. The upper staff has a treble clef and contains three measures of music. The lower staff has a bass clef and contains three measures of music. A bracket labeled '6' spans the first two measures of the upper staff. A second bracket labeled '6' spans the second and third measures. A third bracket labeled '6' spans the entire third measure. A circled number '4' is in the top right corner.

Handwritten musical notation for system 5. It consists of two staves. The upper staff has a treble clef and contains three measures. The lower staff has a bass clef and contains three measures. Arrows point from notes in the upper staff to notes in the lower staff. A circled number '5' is in the top right corner.

Handwritten musical notation for system 6. It consists of two staves. The upper staff has a treble clef and contains six measures. The lower staff has a bass clef and contains six measures. A bracket labeled '6' spans the first three measures of the upper staff. A circled number '6' is in the top right corner.

Handwritten musical notation for system 7. It consists of two staves. The upper staff has a treble clef and contains four measures. The lower staff has a bass clef and contains four measures. A bracket labeled '3' spans the first two measures of the upper staff. A circled number '7' is in the top right corner. The word 'Pedal' is written at the bottom right with a box around it. The word 'FIN' is written at the end of the piece.

22.

Moderato

Handwritten musical notation, first system. Treble clef, 4/4 time signature. The first measure contains a treble clef, a key signature of one flat, and a common time signature. The music consists of two staves. The upper staff has a whole note chord with an accent (^) above it. The lower staff has a rhythmic pattern of eighth notes with accents (^) above them. A bracket under the eighth notes in the lower staff spans two measures.

Handwritten musical notation, second system. Treble clef, 4/4 time signature. The first measure contains a treble clef, a key signature of one flat, and a common time signature. The music consists of two staves. The upper staff has a whole note chord with an accent (^) above it. The lower staff has a rhythmic pattern of eighth notes with accents (^) above them. A bracket under the eighth notes in the lower staff spans two measures.

Handwritten musical notation, third system. Treble clef, 4/4 time signature. The first measure contains a treble clef, a key signature of one flat, and a common time signature. The music consists of two staves. The upper staff has a melodic line with a downward arrow and a rightward arrow. The lower staff has a rhythmic pattern of eighth notes with accents (^) above them. A bracket under the eighth notes in the lower staff spans two measures. The text "Cumpre din ... > din" is written above the notes. The number "3" is boxed in the top right corner. A long horizontal line with "ppp" is drawn below the staff.

Handwritten musical notation, fourth system. Treble clef, 4/4 time signature. The first measure contains a treble clef, a key signature of one flat, and a common time signature. The music consists of two staves. The upper staff has a melodic line with a downward arrow and a rightward arrow. The lower staff has a rhythmic pattern of eighth notes with accents (^) above them. A bracket under the eighth notes in the lower staff spans two measures. The text "graves rit. ind dim" is written above the notes. The text "bis ins Nichts (wiederholungen)" is written to the right of the staff. The number "4" is boxed in the top right corner. A vertical line with "F" and "N" is drawn to the right of the staff.

23

(Metallarbeiter)
Schweißerarbeiten

1

Prestissimo

fort

Musical notation for system 1, measures 1-4. Treble clef, 2/2 time signature. Treble staff has notes with accents and slurs. Bass staff has chords with accents.

2

Musical notation for system 2, measures 5-8. Treble clef, 2/2 time signature. Treble staff has notes with accents and slurs. Bass staff has chords with accents.

3

Musical notation for system 3, measures 9-12. Treble clef, 2/2 time signature. Treble staff has a "GLISS." marking and slurs. Bass staff has chords with accents.

4

Musical notation for system 4, measures 13-16. Treble clef, 2/2 time signature. Treble staff has notes with accents and slurs. Bass staff has chords with accents.

Handwritten musical score for measures 5 and 6. The system includes a treble clef staff with a key signature of one flat (B-flat) and a common time signature (C). The bass clef staff shows a whole note chord. The notation features a melodic line with slurs and accents, and a bass line with a wavy line indicating a pedal point. Handwritten annotations include "Küss." above the first measure and "Loß" above the second measure. A boxed measure number "5" is at the end of the system. Below the system, the instruction "Pedal bis" is written with a square box at the end.

Handwritten musical score for measure 6. The system continues from the previous one, showing the melodic and bass lines. A boxed measure number "6" is at the end of the system. A square box is present at the end of the bass line.

Handwritten musical score for measure 7. The system features a treble clef staff with a melodic line of eighth notes and a bass clef staff with a series of chords. A boxed measure number "7" is at the end of the system. The instruction "D.C." is written to the right of the system.

Handwritten musical score for measure 8. The system shows a treble clef staff with a melodic line and a bass clef staff with a wavy line and a large arrow pointing to the right. A boxed measure number "8" is at the end of the system. The instruction "Ped. bis Fin" is written below the system with a square box at the end. The word "FIN" is written vertically on the right side of the system.

24

Prestissimo

25

Sehr zart

letzte + rit. > 2

dim >

FINE

pp <--> cresc.....>

③

③

①

②

> dim >

①

>

4

pp

26

Allegretto (grotesk-heitel)

Handwritten musical notation for the first system of 'Allegretto (grotesk-heitel)'. It features a treble and bass clef, a 2/4 time signature, and a circled 'p' for piano. The music includes eighth and sixteenth notes, rests, and a fermata. A circled '1' is written above the final measure. A dynamic marking 'f' is written below the staff.

Handwritten musical notation for the second system of 'Allegretto (grotesk-heitel)'. It features a treble and bass clef, a circled 'p' for piano, and various musical notations including slurs, ties, and accidentals.

Handwritten musical notation for the third system of 'Allegretto (grotesk-heitel)'. It features a treble and bass clef, a circled 'f' for forte, and various musical notations including slurs, ties, and accidentals. A circled '2' is written above the first measure of the second staff.

Handwritten musical score, first system. Treble clef, 4/4 time signature. The piece begins with a dynamic marking of *pp* and the tempo marking *poco rit.*. The notation includes a melodic line with a slur and a fermata, and a bass line with a slur and a fermata. A circled *pp* is written above the first measure. The system concludes with a double bar line and a circled number 3.

Handwritten musical score, second system. Treble clef, 4/4 time signature. The tempo marking *Presto* is written above the staff. The notation features a melodic line with a slur and a fermata, and a bass line with a slur and a fermata. A circled *pp* is written above the first measure. The system concludes with a double bar line.

Handwritten musical score, third system. Treble clef, 4/4 time signature. The notation includes a melodic line with a slur and a fermata, and a bass line with a slur and a fermata. A circled number 4 is written above the first measure, and a circled number 5 is written above the second measure. A double bar line is followed by the instruction "letzten 8 Takte nochmals" with a double-headed arrow pointing back to the beginning of the system. The system concludes with a double bar line.

Handwritten musical score, fourth system. Treble clef, 4/4 time signature. The tempo marking *Prestissimo* is written above the staff. The notation includes a melodic line with a slur and a fermata, and a bass line with a slur and a fermata. A circled number 6 is written above the first measure. The system concludes with a double bar line and the word "FIN." written vertically on the right side. A circled *p* is written below the first measure, and a circled *pp* is written below the second measure.

27

Sehr ruhig (sehr leise)

1

gleichmäßig (wie ein Uhrwerk)

2

3

4

Musical notation for measure 4, consisting of two staves. The upper staff is in treble clef and the lower in bass clef. The music includes quarter notes, eighth notes, and rests, with a dynamic marking 'v' (vibrato) above the second measure.

5

Musical notation for measure 5, consisting of two staves. The upper staff is in treble clef and the lower in bass clef. The music includes quarter notes, eighth notes, and rests.

Musical notation for measure 6, consisting of two staves. The upper staff is in treble clef and the lower in bass clef. The music includes quarter notes, eighth notes, and rests. A handwritten note 'rit.....' is written below the first measure of the bass staff.

großes gut + dein

6

Musical notation for measure 6, consisting of two staves. The upper staff is in treble clef and the lower in bass clef. The music includes quarter notes, eighth notes, and rests. The measure concludes with a double bar line and the word 'FINE' written to the right.

FINE

28

Presto

Handwritten musical notation for the first system, measures 1-4. It features a treble clef with a 3/4 time signature and a bass clef with a 4/4 time signature. The music includes various notes, rests, and dynamic markings like 'fff' and accents.

Handwritten musical notation for the second system, measures 5-8. It includes a treble clef and a bass clef. The system concludes with a double bar line and the word 'FIN.' written to the right.

Handwritten musical notation for the third system, measures 9-12. It features a treble clef and a bass clef. The music includes complex rhythmic patterns and dynamic markings.

Handwritten musical notation for the fourth system, measures 13-16. It includes a treble clef and a bass clef. The system ends with a double bar line and the initials 'D.C.' written below.