

4 Teile für
FLÖTE SOLO
UND
VIBRAPHON

Notenheft 1969 LINZ.

1

Scherz Langsam mit Humor

Flöte

pp

VIBRAPHON Pedal pp bis

mf

f

f

p

p

mf

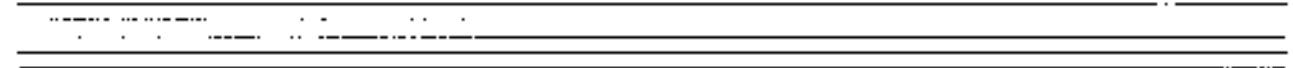
f

Handwritten musical notation for the first system. The treble staff contains a melodic line with notes and accidentals (sharps and flats) under a slur. The bass staff contains a bass line with notes and accidentals. A circled number '4' is written in the treble staff. The word 'die' is written below the treble staff.

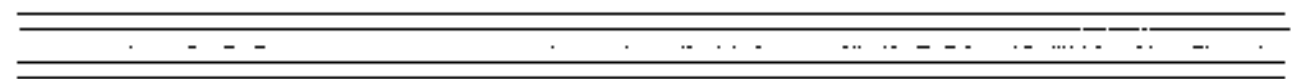
Handwritten musical notation for the second system. The treble staff has a melodic line with notes and accidentals. The bass staff has a bass line with notes and accidentals. A circled number '178' is written in the treble staff. The instruction 'Pedal bis' is written in a box below the bass staff.

Handwritten musical notation for the third system. The treble staff contains a melodic line with notes and accidentals under a slur. The bass staff contains a bass line with notes and accidentals.

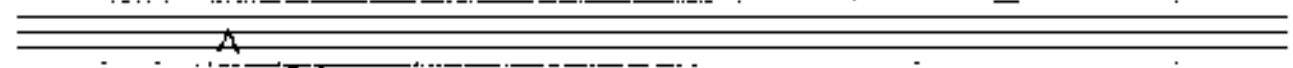
Handwritten musical notation for the fourth system. The treble staff contains a melodic line with notes and accidentals under a slur. The bass staff contains a bass line with notes and accidentals.



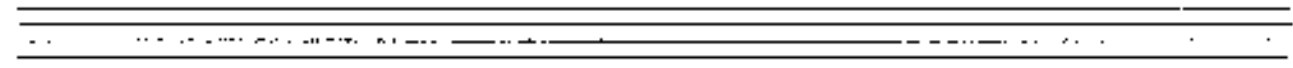
Handwritten musical notation on a grand staff. The upper staff contains a melodic line with notes and accidentals, including a circled 'f' dynamic marking. The lower staff contains a bass line with notes and accidentals. The system is divided into three measures by vertical bar lines.



Handwritten musical notation on a grand staff. The upper staff features a melodic line with a circled 'f' dynamic marking and a slur over several notes. The lower staff contains a bass line with notes and accidentals. The system is divided into three measures.



Handwritten musical notation on a grand staff. The upper staff shows a melodic line with a circled 'f' dynamic marking and a large slur. The lower staff contains a bass line with notes and accidentals. The system is divided into two measures.



Handwritten musical notation on a grand staff. The upper staff contains a melodic line with notes and accidentals. The lower staff contains a bass line with notes and accidentals. The system is divided into two measures.

Handwritten musical notation for the first system. The top staff is in treble clef and the bottom staff is in bass clef. The music consists of several measures with notes, accidentals (sharps and naturals), and slurs. Dynamic markings include *pp* (pianissimo) and a box labeled "Ped. hold" (pedal hold) in the bass staff.

Handwritten musical notation for the second system. The top staff is in treble clef and the bottom staff is in bass clef. It features notes, slurs, and dynamic markings such as *mf* (mezzo-forte) and *dim* (diminuendo). There are also some handwritten annotations like "V" in the bass staff.

Handwritten musical notation for the third system. The top staff is in treble clef and the bottom staff is in bass clef. The music includes notes, slurs, and dynamic markings like *pp* (pianissimo) and *ppp* (pianississimo).

Handwritten musical notation for the fourth system. The top staff is in treble clef and the bottom staff is in bass clef. It includes notes, slurs, and dynamic markings like *pp* (pianissimo) and *ppp* (pianississimo). The system concludes with a double bar line and the word "FIN". There are also some handwritten annotations like "LANGE" and "FIN" in the treble staff.

2

RUHIGE (2 Schritte)

Handwritten musical notation on a grand staff. The upper staff contains a melodic line starting with a treble clef and a key signature of one sharp (F#). The lower staff contains a bass line. Dynamics include *pp* (pianissimo) and *cresc.* (crescendo). A fermata is present over the first measure of the upper staff.

Handwritten musical notation on a grand staff. The upper staff features a melodic line with various accidentals and dynamics including *mf* (mezzo-forte) and *pp*. The lower staff contains a bass line with a circled cross symbol and the word "ritardando" written above it. A fermata is present over the final measure of the upper staff.

Handwritten musical notation on a grand staff. The upper staff contains a melodic line with a treble clef and a key signature of one sharp. The lower staff contains a bass line with a treble clef. The tempo marking "Andante (6/8)" is written above the staff. Dynamics include *pp* (pianissimo).

Handwritten musical notation on a grand staff. The upper staff contains a melodic line with a treble clef and a key signature of one sharp. The lower staff contains a bass line with a treble clef. Dynamics include *ppp* (pianississimo). The word "ritardando" is written above the staff. The piece concludes with a double bar line and the word "FIN" written below it.

Presto

Handwritten musical notation for the first system. The top staff is in treble clef with a 2/2 time signature. It contains notes with accidentals (flats and sharps) and slurs. The bottom staff is in bass clef with notes and accidentals. Dynamic markings include *ff* and *Palladio*.

Handwritten musical notation for the second system. The top staff continues the melodic line with slurs and accidentals. The bottom staff provides harmonic support with notes and accidentals.

Handwritten musical notation for the third system. The top staff features a long slur over several notes, indicating a phrase. The bottom staff continues with notes and accidentals.

Handwritten musical notation for the fourth system. The top staff concludes the melodic line with notes and accidentals. The bottom staff concludes the harmonic part with notes and accidentals.

Handwritten musical notation for the first system. The treble clef staff contains a melodic line with various accidentals (sharps, flats, naturals) and a slur over the first two measures. The bass clef staff contains a single note with a hat symbol (^) and a long horizontal line indicating a sustained or moving bass line.

Handwritten musical notation for the second system. The treble clef staff continues the melodic line with more accidentals and slurs. The bass clef staff continues with a sustained bass line.

Handwritten musical notation for the third system. The treble clef staff features a melodic line with a slur and a circled 'ff' (fortissimo) dynamic marking. The bass clef staff has a sustained bass line with a circled 'ff' and the text 'Pahel lisa' written below it. The word 'dim' with a wedge-shaped hairpin is written in the middle of the system.

Handwritten musical notation for the fourth system. The treble clef staff contains a melodic line with a slur and a circled 'ff' dynamic marking. The bass clef staff has a sustained bass line with a circled 'ff' and the text '(Flatter)' written above it.

Handwritten musical score system 1. The system consists of two staves. The upper staff is in treble clef and contains a melodic line with notes: $\sharp G$, $\flat A$, $\sharp B$, $\flat C$, $\sharp D$, $\flat E$, $\sharp F$, $\flat G$, $\sharp A$, $\flat B$, $\sharp C$. A dynamic marking pp is written below the first measure, and a crescendo hairpin $cresc. \rightarrow$ spans the first two measures. The lower staff is in bass clef and contains notes: $\flat G$, $\flat A$, $\flat B$, $\flat C$, $\flat D$, $\sharp E$, $\flat F$. A dynamic marking ppp is written below the first measure, and the text "Pabala la" with a circled \otimes and an arrow is written below the first two measures.

Handwritten musical score system 2. The system consists of two staves. The upper staff is in treble clef and contains a melodic line with notes: $\sharp G$, $\flat A$, $\sharp B$, $\flat C$, $\sharp D$, $\flat E$, $\sharp F$, $\flat G$, $\sharp A$, $\flat B$, $\sharp C$. A crescendo hairpin $cresc. \rightarrow$ spans the first two measures. The lower staff is in bass clef and contains notes: $\flat G$, $\flat A$, $\flat B$, $\flat C$, $\flat D$, $\sharp E$, $\flat F$. A hairpin $\rightarrow =$ is written below the first two measures.

Handwritten musical score system 3. The system consists of two staves. The upper staff is in treble clef and contains a melodic line with notes: $\sharp G$, $\flat A$, $\sharp B$, $\flat C$, $\sharp D$, $\flat E$, $\sharp F$, $\flat G$, $\sharp A$, $\flat B$, $\sharp C$. A dynamic marking mf is written below the first measure. The lower staff is in bass clef and contains notes: $\flat G$, $\flat A$, $\flat B$, $\flat C$, $\flat D$, $\sharp E$, $\flat F$. A dynamic marking mf is written below the first measure.

Handwritten musical score system 4. The system consists of two staves. The upper staff is in treble clef and contains a melodic line with notes: $\sharp G$, $\flat A$, $\sharp B$, $\flat C$, $\sharp D$, $\flat E$, $\sharp F$, $\flat G$, $\sharp A$, $\flat B$, $\sharp C$. A circled ff is written below the first measure. The lower staff is in bass clef and contains notes: $\flat G$, $\flat A$, $\flat B$, $\flat C$, $\flat D$, $\sharp E$, $\flat F$. A circled ff is written below the first measure.

4

So ruhig wie möglich.

3
ppp
Pedal in D

(viel Vibrato)

pp

Handwritten musical notation for the first system. The treble clef staff contains a melodic line with a slur over the first two measures and an accent (>) over the third measure. The bass clef staff contains a rhythmic accompaniment with eighth and sixteenth notes. The key signature has one sharp (F#).

Handwritten musical notation for the second system. The treble clef staff continues the melodic line with a slur over the first two measures and an accent (>) over the third measure. The bass clef staff continues the accompaniment. The key signature has one sharp (F#).

Handwritten musical notation for the third system. The treble clef staff shows a change in the melodic line with a slur over the first two measures and an accent (>) over the third measure. The bass clef staff continues the accompaniment. The key signature has one sharp (F#).

Handwritten musical notation for the fourth system. The treble clef staff concludes the melodic line with a slur over the first two measures and an accent (>) over the third measure. The bass clef staff concludes the accompaniment. The key signature has one sharp (F#).

Handwritten musical notation for the first system. The treble staff contains a melodic line with notes G4, A4, B4, C5, B4, A4, G4, and F4, with a slur over the first four notes and a fermata over the last two. The bass staff contains a bass line with notes F3, E3, D3, C3, B2, A2, G2, and F2. A dynamic marking 'pp' is present at the beginning of the bass staff.

Handwritten musical notation for the second system. The treble staff continues the melodic line with notes E4, D4, C4, B3, A3, G3, and F3. The bass staff continues the bass line with notes E2, D2, C2, B1, A1, G1, and F1.

Handwritten musical notation for the third system. The treble staff features a fermata over the note G4. The bass staff continues the bass line with notes E2, D2, C2, B1, A1, G1, and F1. A dynamic marking 'pp' is present at the beginning of the bass staff.

Handwritten musical notation for the fourth system. The treble staff contains a complex melodic passage with notes G4, A4, B4, C5, B4, A4, G4, and F4, with a slur and a fermata. The bass staff continues the bass line with notes E2, D2, C2, B1, A1, G1, and F1.

Handwritten musical notation system 1. It consists of two staves. The upper staff is in treble clef with a key signature of one sharp (F#) and contains a melodic line with a slur and a dynamic marking of *pp*. The lower staff is in bass clef with a key signature of one sharp (F#) and contains a bass line with various accidentals.

Handwritten musical notation system 2. It consists of two staves. The upper staff is in treble clef with a key signature of one sharp (F#) and contains a melodic line with a slur. The lower staff is in bass clef with a key signature of one sharp (F#) and contains a bass line with various accidentals.

Handwritten musical notation system 3. It consists of two staves. The upper staff is in treble clef with a key signature of one sharp (F#) and contains a melodic line with a slur and a circled '3' above it. The lower staff is in bass clef with a key signature of one sharp (F#) and contains a bass line with various accidentals.

Handwritten musical notation system 4. It consists of two staves. The upper staff is in treble clef with a key signature of one sharp (F#) and contains a melodic line with a slur and a circled '3' above it. The lower staff is in bass clef with a key signature of one sharp (F#) and contains a bass line with various accidentals and a dynamic marking of *pp*.

größtes gut + schön

lange verhaltenen
Länge