

4 Teile für
BLÖTE SOLO
UND
VIBRAPHON

Notenheft 1969 LINZ.

1

Schn langsam und ruhig

Flöte

pp

mp

f > dir

p

p

mf

f

Handwritten musical score for the first system. The treble clef staff contains a melody with notes and accidentals (sharps, flats, naturals) and slurs. The word "die" is written below the first measure. The bass clef staff contains accompaniment with notes and accidentals. A circled "4" is present in the first measure of the bass staff.

Handwritten musical score for the second system. The treble clef staff contains a melody with notes and accidentals and slurs. The bass clef staff contains accompaniment with notes and accidentals. A circled "PR" is in the second measure of the treble staff. The text "Pedal bis" is written in a box below the bass staff.

Handwritten musical score for the third system. The treble clef staff contains a melody with notes and accidentals and slurs. The bass clef staff contains accompaniment with notes and accidentals. The dynamic marking "mf" is written between the staves.

Handwritten musical score for the fourth system. The treble clef staff contains a melody with notes and accidentals and slurs. The bass clef staff contains accompaniment with notes and accidentals. The dynamic marking "p" is written between the staves.

Handwritten musical notation for the first system. The treble staff begins with a whole rest, followed by a quarter note G4 with a flat, a quarter note A4 with a sharp, and a quarter note B4 with a flat. The bass staff has a quarter note G3 with a sharp, a quarter note A3 with a sharp, and a quarter note B3 with a flat. Dynamic markings include 'pp' in both staves. There are also some handwritten annotations above the notes.

Handwritten musical notation for the second system. The treble staff contains a half note G4 with a flat, a half note A4 with a flat, and a half note B4 with a flat. The bass staff has a half note G3 with a sharp, a half note A3 with a sharp, and a half note B3 with a flat. Dynamic markings include 'p', 'mf', and a circled 'f'. There are also some handwritten annotations above the notes.

Handwritten musical notation for the third system. The treble staff has a large slur over a series of notes, with a circled 'f' at the beginning. The bass staff has a half note G3 with a sharp, a half note A3 with a sharp, and a half note B3 with a flat. Dynamic markings include 'pp'. There are also some handwritten annotations above the notes.

Handwritten musical notation for the fourth system. The treble staff has a whole rest, followed by a quarter note G4 with a flat, a quarter note A4 with a flat, and a quarter note B4 with a flat. The bass staff has a quarter note G3 with a sharp, a quarter note A3 with a sharp, and a quarter note B3 with a flat. There are also some handwritten annotations below the notes.

Handwritten musical score for the first system. The treble clef staff contains a melodic line with notes G#4, A#4, B4, C5, D5, E5, F#5, G#5, and A5. The bass clef staff contains notes B2, C3, D3, E3, F3, G3, A3, and B3. Dynamic markings include *pp* and *Ped. b*.

Handwritten musical score for the second system. The treble clef staff contains notes G4, A4, B4, C5, D5, E5, F#5, G#5, and A5. The bass clef staff contains notes B2, C3, D3, E3, F3, G3, A3, and B3. Dynamic markings include *mf* and *f*.

Handwritten musical score for the third system. The treble clef staff contains notes G4, A4, B4, C5, D5, E5, F#5, G#5, and A5. The bass clef staff contains notes B2, C3, D3, E3, F3, G3, A3, and B3. Dynamic markings include *pp* and *p*.

Handwritten musical score for the fourth system. The treble clef staff contains notes G#4, A#4, B4, C5, D5, E5, F#5, G#5, and A5. The bass clef staff contains notes B2, C3, D3, E3, F3, G3, A3, and B3. Dynamic markings include *pp* and *ppp*. The system ends with the word *FIN*.

2

RUHIGE (2 Schläge)

Handwritten musical score for the first system, featuring a treble clef staff with notes and rests, and a bass clef staff with a whole rest. Dynamics include *pp* and *cresc.* with hairpins. A fermata is present over the first measure.

Handwritten musical score for the second system, including treble and bass clef staves. Dynamics range from *mf* to *f*. Includes the instruction *rit. dim.* and a circled *f* dynamic marking. A box labeled *mf Pedal bis* is present in the bass staff.

Handwritten musical score for the third system, starting with the tempo marking *ADAGIO (68 Schläge)*. It features a treble clef staff with notes and rests, and a bass clef staff with a dense texture of notes. Dynamics include *pp*.

Handwritten musical score for the fourth system, featuring a treble clef staff with notes and rests, and a bass clef staff with a whole rest. Dynamics include *ppp*. The system concludes with the word *FIN* written below the staff.

Presto

Handwritten musical notation for the first system. The top staff is in treble clef and the bottom staff is in bass clef. The time signature is 2/2. The music consists of several measures with notes and rests. There are dynamic markings 'ff' and 'Poco bis' written in the bass staff.

Handwritten musical notation for the second system. It continues the piece with treble and bass staves, showing further melodic and harmonic development.

Handwritten musical notation for the third system. This system includes more complex rhythmic patterns and melodic lines in both staves.

Handwritten musical notation for the fourth system, which concludes the piece. It features final melodic and harmonic statements in both staves.

Handwritten musical notation for the first system. The treble clef staff contains a melodic line with notes and accidentals (sharps and flats) and slurs. The bass clef staff contains a single note with a flat and a sharp, with a long horizontal line underneath indicating a sustained sound.

Handwritten musical notation for the second system. The treble clef staff continues the melodic line with various accidentals and slurs. The bass clef staff has a long horizontal line, suggesting a sustained or held note.

Handwritten musical notation for the third system. The treble clef staff features a melodic line with slurs and accidentals. The bass clef staff has notes with a circled *pp* dynamic marking. The word "dim" is written above the staff with a wedge-shaped dynamic marking. Below the staff, there are notes with a flat and a sharp, and the text "Pachel bis A" is written.

Handwritten musical notation for the fourth system. The treble clef staff contains notes with slurs and accidentals. The bass clef staff has notes with a circled *p* dynamic marking. The word "(Hallerberg)" is written in the treble clef staff.

Handwritten musical score for the first system. The treble clef part begins with a dynamic marking of *pp* and a *cresc... →* marking. The notes in the treble clef are: $\sharp G$, $\flat A$, $\sharp B$, $\flat C$, $\sharp D$, $\flat E$, $\sharp F$. The bass clef part starts with *pp* and contains notes: $\flat G$, $\flat A$, $\flat B$, $\flat C$, $\flat D$, $\sharp E$. A handwritten annotation "Paral bi" with a circled 'i' and a horizontal line is written below the bass clef staff.

Handwritten musical score for the second system. The treble clef part has a *cresc... →* marking. The notes are: $\sharp G$, $\flat A$, $\sharp B$, $\flat C$, $\sharp D$, $\flat E$, $\sharp F$. The bass clef part has notes: $\flat G$, $\flat A$, $\flat B$, $\flat C$, $\flat D$, $\sharp E$. Dynamic accents (\gt) are present above the treble clef notes and below the bass clef notes.

Handwritten musical score for the third system. The treble clef part starts with a *mf* dynamic marking. The notes are: $\sharp G$, $\flat A$, $\sharp B$, $\flat C$, $\sharp D$, $\flat E$, $\sharp F$. The bass clef part has notes: $\flat G$, $\flat A$, $\flat B$, $\flat C$, $\flat D$, $\sharp E$. Dynamic accents (\gt) are present above the treble clef notes and below the bass clef notes.

Handwritten musical score for the fourth system. The treble clef part starts with a circled *ff* dynamic marking. The notes are: $\sharp G$, $\flat A$, $\sharp B$, $\flat C$, $\sharp D$, $\flat E$, $\sharp F$. The bass clef part has notes: $\flat G$, $\flat A$, $\flat B$, $\flat C$, $\flat D$, $\sharp E$. Dynamic accents (\gt) are present above the treble clef notes and below the bass clef notes.

Handwritten musical notation for the first system. The treble clef staff contains a melodic line with a slur over the first four measures. The key signature is one sharp (F#). The bass line consists of chords with various accidentals.

Handwritten musical notation for the second system. The treble clef staff contains a melodic line with a slur over the first four measures. The key signature is one sharp (F#). The bass line consists of chords with various accidentals.

Handwritten musical notation for the third system. The treble clef staff contains a melodic line with a slur over the first four measures. The key signature is one sharp (F#). The bass line consists of chords with various accidentals. The word "dir" is written below the staff.

Handwritten musical notation for the fourth system. The treble clef staff contains a melodic line with a slur over the first four measures. The key signature is one sharp (F#). The bass line consists of chords with various accidentals. The word "pp" is written below the staff.

4

so ruhig wie möglich

3/4
♩
Pedal bis E

(viel Vibrato)

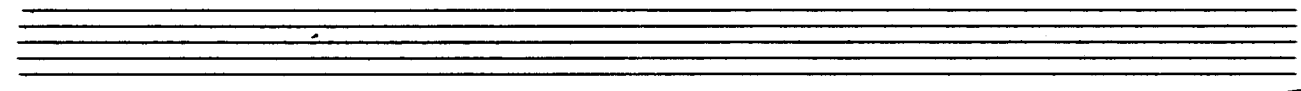
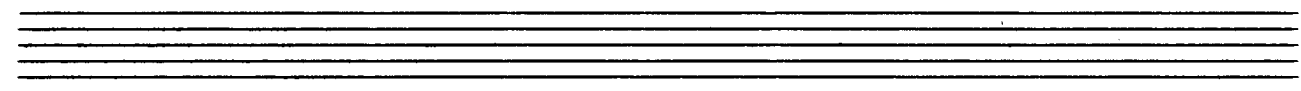
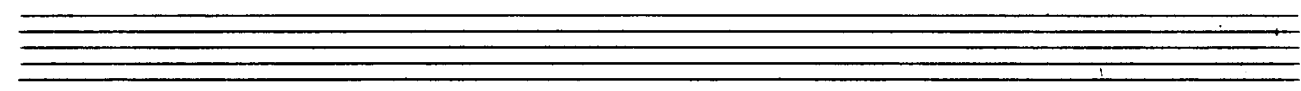
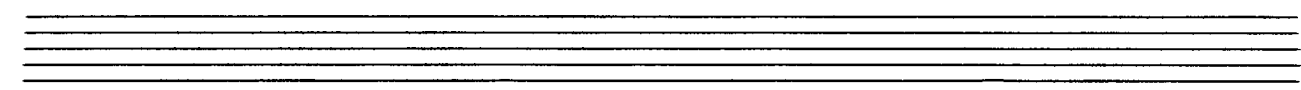
4/4
pp

Handwritten musical notation for the first system. The treble staff contains a melodic line with a slur over the first two measures and a fermata over the second measure. The bass staff provides accompaniment with chords and moving lines. The key signature has one sharp (F#).

Handwritten musical notation for the second system. The treble staff continues the melodic line with a slur and a fermata. The bass staff continues the accompaniment. The key signature remains one sharp.

Handwritten musical notation for the third system. The treble staff includes dynamic markings 'p' and 'v'. The bass staff continues the accompaniment. The key signature remains one sharp.

Handwritten musical notation for the fourth system. The treble staff concludes with a fermata. The bass staff concludes with a final chord. The key signature remains one sharp.

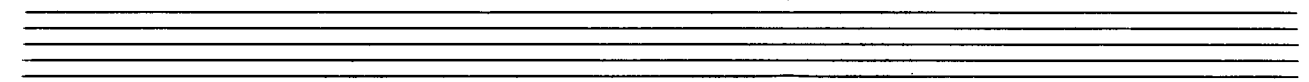


Handwritten musical notation for the first system. The top staff is a treble clef with a wavy line and a box containing the number '6'. The bottom staff is a bass clef with a melodic line. A piano (*pp*) dynamic marking is present.

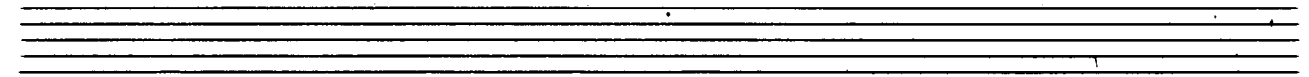
Handwritten musical notation for the second system. The top staff is a treble clef with a slur over the notes. The bottom staff is a bass clef with a melodic line. A piano (*pp*) dynamic marking is present.

Handwritten musical notation for the third system. The top staff is a treble clef with a slur over the notes. The bottom staff is a bass clef with a melodic line. A piano (*pp*) dynamic marking is present.

Handwritten musical notation for the fourth system. The top staff is a treble clef with a circled plus sign. The bottom staff is a bass clef with a melodic line. A piano (*pp*) dynamic marking is present.



Handwritten musical notation on a grand staff. The upper staff is in treble clef with a 4/8 time signature. The lower staff is in bass clef. The key signature has one sharp (F#). The music consists of two measures. The first measure contains a quarter note on G4, a quarter note on A4, and a quarter note on B4. The second measure contains a quarter note on B4, a quarter note on A4, and a quarter note on G4. There are some handwritten annotations above the notes.



Handwritten musical notation on a grand staff. The upper staff is in treble clef. The lower staff is in bass clef. The key signature has one sharp (F#). The music consists of two measures. The first measure contains a quarter note on G4, a quarter note on A4, and a quarter note on B4. The second measure contains a quarter note on B4, a quarter note on A4, and a quarter note on G4. There are some handwritten annotations above the notes, including a 'pp' dynamic marking.



Handwritten musical notation on a grand staff. The upper staff is in treble clef. The lower staff is in bass clef. The key signature has one sharp (F#). The music consists of two measures. The first measure contains a quarter note on G4, a quarter note on A4, and a quarter note on B4. The second measure contains a quarter note on B4, a quarter note on A4, and a quarter note on G4. There are some handwritten annotations above the notes, including a 'pp' dynamic marking and a wavy line above the staff.



Handwritten musical notation on a grand staff. The upper staff is in treble clef. The lower staff is in bass clef. The key signature has one sharp (F#). The music consists of two measures. The first measure contains a quarter note on G4, a quarter note on A4, and a quarter note on B4. The second measure contains a quarter note on B4, a quarter note on A4, and a quarter note on G4. There are some handwritten annotations above the notes, including a 'pppp' dynamic marking and the word 'FIN' written in large letters. Below the staff, there is a handwritten note: "größtes gut + ohir" and "lange verhalten lassen".