



12

MUSIK FÜR

4 STREICHINSTRUMENTE (in 7 Teilen)

1969

Adolf Scherbaum.



Teil I.

sehr langsam ($\frac{6}{4}$)

1V. *pp*

2V. *pp*

Br.

Cello

1 2 3

1 4

2 5 6

1V.

2V.

Br.

Cello

4 5 6

Handwritten musical score for measures 7-9. The score consists of four staves: three treble clefs and one bass clef. The first staff has dynamics *p* and *pp*. The second staff has dynamics *p* and *pp*. The third staff has lyrics "dir" and *pp*. The fourth staff has lyrics "sit - dir -". Measure numbers 7, 8, and 9 are indicated. A circled "2" is at the end of the system.

Handwritten musical score for measures 10-11, titled "pasante". The score consists of four staves: three treble clefs and one bass clef. Measure numbers 10 and 11 are indicated.

Handwritten musical score for measures 18, 19, and 20. The score is written on four staves: three treble clefs and one bass clef. Measure 18 shows a melodic line in the third treble staff starting with a half note G4, followed by quarter notes A4, B4, and C5. Measure 19 continues with a half note D5, quarter notes E5, and F5. Measure 20 features a half note G5, quarter notes A5, and B5. The bass clef staff contains a single half note G2 in measure 18 and a single half note G2 in measure 19. Dynamic markings include *pp* in measures 19 and 20. A key signature change to one sharp (F#) is indicated above measure 20.

Handwritten musical score for measures 21, 22, and 23. The score is written on four staves: three treble clefs and one bass clef. Measure 21 shows a melodic line in the third treble staff starting with a half note G4, followed by quarter notes A4, B4, and C5. Measure 22 continues with a half note D5, quarter notes E5, and F5. Measure 23 features a half note G5, quarter notes A5, and B5. The bass clef staff contains a single half note G2 in measure 21 and a single half note G2 in measure 22. Dynamic markings include *pp* in measure 21 and *ppp* in measure 23. A key signature change to one sharp (F#) is indicated above measure 21. A circled number 5 is written above measure 23. The instruction "(b) Lounge halten" is written below measure 23.

Teil II.

sehr ruhig (breit) auf 6 Schläge

Handwritten musical score for measures 24-26. The score is written on four staves. Measure 24 features a piano (*f*) dynamic. Measure 25 features a piano (*f*) dynamic. Measure 26 features a piano (*f*) dynamic. The notation includes various notes, rests, and articulation marks such as accents (^) and slurs. A circled *f* is present in the bass staff of measure 26, and a circled *f* is present in the bass staff of measure 25.

Handwritten musical score for measures 27-29. The score is written on four staves. Measure 27 features a piano (*ff*) dynamic. Measure 28 features a piano (*ff*) dynamic. Measure 29 features a piano (*ff*) dynamic. The notation includes various notes, rests, and articulation marks such as accents (^) and slurs. A circled *f* is present in the bass staff of measure 27, and a circled *f* is present in the bass staff of measure 28.

Handwritten musical score for measures 30-32. The score is written on four staves. The top two staves are treble clefs, and the bottom two are bass clefs. Measure 30 shows a key signature change to one sharp (F#) and a common time signature. Measure 31 has a circled '2' above it. Measure 32 has a circled '2' and '32' above it. Dynamics include 'pp' and '> pp'. There are various annotations like 'V', 'p', and circled 'F#' symbols.

Handwritten musical score for measures 33-35. The score is written on four staves. The top two staves are treble clefs, and the bottom two are bass clefs. Measure 33 has a circled 'p' below it. Measure 34 has a circled 'p' below it. Measure 35 has a circled 'p' below it. Dynamics include 'pp' and 'f'. There are various annotations like 'p', 'f', and circled 'p' symbols.

Handwritten musical score for measures 36-38. The score is written on four staves. Measure 36 is marked with a circled '3'. Measure 37 is marked with '37'. Measure 38 is marked with '38'. The notation includes various notes, rests, and dynamic markings such as pp and fpp . There are also circled notes and some handwritten annotations like '77' and 'B'.

Handwritten musical score for measures 39-41. The score is written on four staves. Measure 39 is marked with '39'. Measure 40 is marked with '40'. Measure 41 is marked with a circled '4' and '41'. The notation includes notes, rests, and dynamic markings such as pp , fpp , and ppp . There are also circled notes and some handwritten annotations like '77' and 'B'. A box at the bottom right contains the instruction 'lange halten.'

Teil III.

Solo rasch
(heftig)

Handwritten musical score for measures 42-44. The score is for four staves: Violin I, Violin II, Bass, and Cello/Double Bass. Measure 42 starts with a circled '77' and a circled '#'. Measure 43 has a circled '#'. Measure 44 has a circled '#'. The music is in 4/4 time and features various rhythmic patterns and accidentals.

Handwritten musical score for measures 45-48. The score is for four staves: Violin I, Violin II, Bass, and Cello/Double Bass. Measure 45 starts with a circled '1' and a circled '#'. Measure 46 has a circled '#'. Measure 47 has a circled '#'. Measure 48 has a circled '#'. The music is in 4/4 time and features various rhythmic patterns and accidentals.

Handwritten musical score for measures 49-51. The score is written on four staves (treble, alto, bass, and tenor clefs). Measure 49 features a complex chord structure with a sharp sign and a bracket. Measure 50 shows rhythmic patterns with accents (^) and a sharp sign. Measure 51 is marked with a circled 2 and a sharp sign. The word "arco" is written below the bass staff in measure 49, and "gliss." is written below it in measure 50.

Handwritten musical score for measures 52-54. The score is written on four staves. Measure 52 features a complex chord structure with a sharp sign and a bracket. Measure 53 shows rhythmic patterns with accents (^) and a sharp sign. Measure 54 is marked with a circled 3 and a sharp sign. The word "fff" is written below the bass staff in measure 54.

3

subito
langsam breit — accel..... Tempo

55

56

3

4

subito -
langsam -
breit — accel..... Tempo →

57

58

4

5

Handwritten musical score for measures 57-60. The score is written on four staves. Measure 57 is marked with a blue '57' above the first staff. Measure 60 is marked with a blue '5' in a box and '60' to its right. The notation includes various notes, rests, and accidentals across all staves.

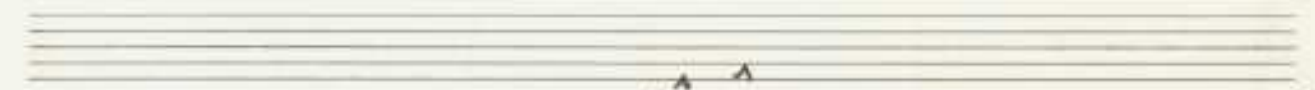
Handwritten musical score for measures 61-63. Measure 61 is marked with a blue '61' above the first staff. Measure 62 is marked with a blue '62' above the first staff. Measure 63 is marked with a blue '6' in a box and '63' to its right. The notation includes various notes, rests, and accidentals. A bracket labeled 'hart' spans measures 62 and 63. The word 'Gliss' is written on the bottom staff in measure 61. The notation includes various notes, rests, and accidentals across all staves.

Teil II.

(Pesante) sehr breit + langsam

64 *sol G* 65 66

67 68 69



Handwritten musical score for the first system, measures 70-72. The score is written for four staves: Treble, Alto, Tenor, and Bass clefs. Measure 70 shows a rest for all parts. Measure 71 features a complex chordal texture with various accidentals (sharps, flats, naturals) and a fermata over the final chord. Measure 72 continues the texture with a circled '1' above the staff and a '72' below it. The notation includes many accidentals and some unusual symbols like '8' and '71' above notes.



Handwritten musical score for the second system, measures 73-74. Measure 73 is marked 'heftig' (forceful) and contains a series of notes with various accidentals, some with stems pointing downwards. Measure 74 shows a chord with a sharp sign below it and a wavy line indicating a tremolo or similar effect. The notation includes many accidentals and some unusual symbols like '73' and '74' below notes.



Handwritten musical score for measures 75 and 76. The score is written on four staves (treble clef, two alto clefs, and bass clef). Measure 75 is marked with a circled '2' above the staff. Measure 76 is marked with '76' above the staff. The notation includes various chords and melodic lines with accidentals (sharps and naturals).

Handwritten musical score for measures 77, 78, and 79. The score is written on four staves (treble clef, two alto clefs, and bass clef). Measure 77 is marked with a circled '3' above the staff. Measure 78 is marked with '78' above the staff. Measure 79 is marked with a circled '4' above the staff. The notation includes melodic lines with accents (^) and dynamic markings (pp). There are also some handwritten annotations like 'B' and 'f'.

5

heftig

7

3 3

80

81

6

82

83

Solo Viol. 1

84

(lange halten)

85

pp

7

Teil V.

so rasch wie möglich | Beginn ppp | sempre decendo | bis ffff

Solo Viol. I. $\frac{3}{8}$ ppp

Viol. 1 pp

Viol. 2 pp

86 1 87 2 88 3 89

90 1 91 2 92 3 93

94 95 96 97

6

98 99 100 101

Handwritten musical score for measures 102-105. The score is written for three staves: 1 (top), 2 (middle), and Br. (bottom). Each staff begins with a sixteenth-note triplet marked with a '6' above it. Measure 102 shows the triplet starting. Measures 103, 104, and 105 contain rests for all parts. A circled 'p' is written in the first staff of measure 102. A 'p' is written in the Br. staff of measure 102.

Handwritten musical score for measures 106-109. The score is written for three staves. Each staff begins with a sixteenth-note triplet marked with a '6' above it. Measure 106 shows the triplet starting. Measures 107, 108, and 109 contain rests for all parts. A circled 'C' is written in the top right corner of the system.

Handwritten musical score for measures 110-115. The score is written for four staves. Each staff begins with a sixteenth-note triplet marked with a '6' above it. Measure 110 shows the triplet starting. Measures 111, 112, 113, and 114 contain rests for all parts. Measure 115 contains a whole note chord marked with a double bar line and a 'ff' dynamic marking. A circled 'D' is written in the top right corner of the system.

Handwritten musical score for measures 116-120. The score consists of four staves (treble and bass clefs). Measures 116-119 show melodic lines with accidentals and a '6' bracket. Measure 120 is a whole rest. A box labeled 'E' is at the end.

Handwritten musical score for measures 121-124. The score consists of four staves (treble and bass clefs). Measures 121-122 show melodic lines with accidentals and a '6' bracket. Measures 123-124 are whole rests. A box labeled 'F' is at the end.

Handwritten musical score for four staves, measures 125-128. The score includes treble and bass clefs, a key signature of one sharp (F#), and various chordal and melodic notations. A circled '5' is in the top right corner.

Measures 125, 126, 127, and 128 are indicated above the staves.

Handwritten musical score for four staves, measures 129-130. The score includes treble and bass clefs, a key signature of one sharp (F#), and various chordal and melodic notations. A circled '5' is in the top right corner.

Measures 129 and 130 are indicated above the staves.

Lyrics for measure 129: *Sohn*, *Lange*, *G.P.*, *mit größten Spannung*

Performance instructions: *subito*, *pizz*, *sehr harte pizz.*

Teil VI.

Sehr langsam

Handwritten musical score for measures 131-133. The score is written for four staves (treble and bass clefs). Measure 131 features a piano (*pp*) dynamic with a *con sord.* marking. Measure 132 continues with *pp* dynamics and *con sord.* markings. Measure 133 concludes with *pp* dynamics and *con sord.* markings. The notation includes various chord symbols and melodic lines with slurs and accents.

Handwritten musical score for measures 134-136. The score is written for four staves (treble and bass clefs). Measure 134 features a piano (*pp*) dynamic with a *con sord.* marking. Measure 135 continues with *pp* dynamics and *con sord.* markings. Measure 136 concludes with a *ppp* dynamic and a *con sord.* marking. The notation includes various chord symbols and melodic lines with slurs and accents.

Handwritten musical score, measures 137-139. The score is written on four staves. Measure 137 begins with a *ppp* dynamic marking. Measure 138 has a *ppp* marking. Measure 139 has a *ppp* marking. The notation includes various notes, rests, and accidentals. A wavy line is present in the lower staves.

Handwritten musical score, measures 140-143. The score is written on four staves. Measure 140 has a *ppp* marking. Measure 141 has a *ppp* marking. Measure 142 has a *ppp* marking. Measure 143 has a *ppp* marking. The notation includes various notes, rests, and accidentals. A wavy line is present in the lower staves. The word "Lange." is written in a box in measure 142.

Teil VII.

pesante — (frei — sehr stark) $\frac{6}{8}$
(nicht notenbindend)

Handwritten musical score for measures 149-152. The score is written on four staves. The first three staves are for woodwinds (flute, oboe, and clarinet) and the fourth is for the bassoon. The key signature is one sharp (F#) and the time signature is 4/4. Measure numbers 149, 150, 151, and 152 are written above the staves. A circled '1' is written above measure 152. The bassoon part includes dynamic markings: *diu*, *pp*, and a circled *p* with an accent (>).

Handwritten musical score for measures 153-155. The score is written on four staves. The first three staves are for woodwinds (flute, oboe, and clarinet) and the fourth is for the bassoon. The key signature is one sharp (F#) and the time signature is 4/4. Measure numbers 153, 154, and 155 are written above the staves. The bassoon part includes dynamic markings: *pp*, *f*, and a circled *p* with an accent (>).

Handwritten musical score for measures 156-158. The score is written on five staves. Measure 156 starts with a treble clef and a key signature of one sharp (F#). The first staff has a circled 'f' and a sharp sign. The second staff has a circled 'f' and a sharp sign. The third staff has a circled 'f' and a sharp sign. The fourth staff has a circled 'f' and a sharp sign. The fifth staff has a circled 'f' and a sharp sign. Measure 157 features a circled 'f' and a sharp sign. Measure 158 features a circled 'f' and a sharp sign. The score includes various musical notations such as notes, rests, and dynamic markings like 'pp'.

Handwritten musical score for measures 159-163. The score is written on five staves. Measure 159 starts with the text "größtes dir und nit..." and a circled 'f'. Measure 160 features a circled 'f' and a sharp sign. Measure 161 features a circled 'f' and a sharp sign. Measure 162 features a circled 'f' and a sharp sign. Measure 163 features a circled 'f' and a sharp sign. The score includes various musical notations such as notes, rests, and dynamic markings like 'ffpp', 'p', and 'pp'.

ppp > pppp
 sehr [lange]
 bis ins Nichts.

Adolf Scherbaum
 July 1969.