

12

MUSIK FÜR

4 STREICHINSTRUMENTE (in 7 Teilen)

1969

Adolf Scherbaum.



Teil I.

sehr langsam (6/4)

Handwritten musical score for the first system of 'Teil I.' The score is for four string instruments: 1V (Violin I), 2V (Violin II), Br. (Bassoon), and Cello. The tempo is 'sehr langsam' and the time signature is 6/4. The first measure is marked 'pp' and contains a whole note chord of G2, B2, D3, F3, G3. The second measure is marked '1' and contains a whole note chord of G2, A2, B2, C3, D3. The third measure is marked '2' and contains a whole note chord of G2, A2, B2, C3, D3. The fourth measure is marked '3' and contains a whole note chord of G2, A2, B2, C3, D3. The 2V part has a whole note chord of G2, A2, B2, C3, D3 in the third measure. The Br. part has a whole note chord of G2, A2, B2, C3, D3 in the third measure. The Cello part has a whole note chord of G2, A2, B2, C3, D3 in the third measure.

Handwritten musical score for the second system of 'Teil I.' The score is for four string instruments: 1V, 2V, Br., and Cello. The tempo is 'sehr langsam' and the time signature is 6/4. The first measure is marked '1' and contains a whole note chord of G2, A2, B2, C3, D3. The second measure is marked '2' and contains a whole note chord of G2, A2, B2, C3, D3. The third measure is marked '3' and contains a whole note chord of G2, A2, B2, C3, D3. The fourth measure is marked '4' and contains a whole note chord of G2, A2, B2, C3, D3. The fifth measure is marked '5' and contains a whole note chord of G2, A2, B2, C3, D3. The sixth measure is marked '6' and contains a whole note chord of G2, A2, B2, C3, D3. The 1V part has a whole note chord of G2, A2, B2, C3, D3 in the second measure. The 2V part has a whole note chord of G2, A2, B2, C3, D3 in the second measure. The Br. part has a whole note chord of G2, A2, B2, C3, D3 in the second measure. The Cello part has a whole note chord of G2, A2, B2, C3, D3 in the second measure.

Handwritten musical score for measures 7-9. The score consists of four staves. The first two staves are treble clefs, the third is a treble clef, and the fourth is a bass clef. The first two staves have notes with slurs and accents. The third staff has a melodic line with a circled 'f' dynamic marking. The fourth staff shows a bass line with notes and a circled '2' above it. Performance markings include 'tt', 'pp', 'dim', and 'pp' with accents. Measure numbers 7, 8, and 9 are indicated.

Handwritten musical score for measures 10-11, titled "pasante". The score consists of four staves. The first two staves are treble clefs, the third is a treble clef, and the fourth is a bass clef. The notes are mostly quarter notes. The first two staves have "tt" markings. The third staff has a "B" marking. The fourth staff has notes with sharps. Measure numbers 10 and 11 are indicated.

Handwritten musical score for measures 12 and 13. The score is for four staves: Violin I, Violin II, Viola, and Cello/Double Bass. Measure 12 features a first violin melody with a slur over a quarter note G4, a dotted quarter note A4, and a quarter note B4. The second violin, viola, and cello/bass parts are mostly rests. Measure 13 continues the first violin melody with a quarter note C5, a dotted quarter note B4, and a quarter note A4. The other parts have corresponding chords. A blue '3' in a box and the number '14' are written at the end of the system.

Handwritten musical score for measures 15 and 16. The score is for four staves: Violin I, Violin II, Viola, and Cello/Double Bass. Measure 15 features a first violin melody with a quarter note G4, a dotted quarter note A4, and a quarter note B4. The second violin, viola, and cello/bass parts have chords. Measure 16 continues the first violin melody with a quarter note C5, a dotted quarter note B4, and a quarter note A4. The other parts have corresponding chords. A blue '4' in a circle and the number '17' are written at the end of the system.

Handwritten musical score for measures 18, 19, and 20. The score is written on four staves. Measure 18 shows a melodic line in the third staff starting with a half note G4, followed by quarter notes A4, B4, and C5. Measure 19 continues with a half note D5, quarter notes E5, and F5. Measure 20 features a key signature change to D major (indicated by a sharp sign and a treble clef with a sharp sign) and a dynamic marking of *pp*. The first staff has a whole rest, the second staff has a whole rest with a *pp* marking, and the third staff has a whole note D5. The fourth staff has a whole rest.

Handwritten musical score for measures 21, 22, and 23. The score is written on four staves. Measure 21 shows a melodic line in the third staff starting with a half note G4, followed by quarter notes A4, B4, and C5. Measure 22 continues with a half note D5, quarter notes E5, and F5. Measure 23 features a key signature change to D major (indicated by a sharp sign and a treble clef with a sharp sign) and a dynamic marking of *ppp*. The first staff has a whole rest, the second staff has a whole rest with a *ppp* marking, and the third staff has a whole note D5. The fourth staff has a whole rest with a *ppp* marking and the instruction "(Lange halten)".

Teil II.

sehr ruhig (breit) auf 6 Schläge

Handwritten musical score for measures 24-26. The score is written for four staves (Violin I, Violin II, Viola, and Cello/Double Bass). Measure 24 features a forte (f) dynamic and a half note D in the first two staves. Measure 25 features a forte (f) dynamic and a half note D# in the first two staves. Measure 26 features a forte (f) dynamic and a half note D# in the first two staves. The Cello/Double Bass part includes a triplet of eighth notes in measure 26.

Handwritten musical score for measures 27-29. The score is written for four staves (Violin I, Violin II, Viola, and Cello/Double Bass). Measure 27 features a first ending (1) and a forte (ff) dynamic. Measure 28 features a forte (ff) dynamic. Measure 29 features a forte (ff) dynamic. The Cello/Double Bass part includes a triplet of eighth notes in measure 29.

Handwritten musical score for measures 30-32. The score is written on four staves (Violin I, Violin II, Viola, and Cello/Double Bass). Measure 30 shows a key signature change to one sharp (F#) and a common time signature. Measure 31 has a fermata over the first two staves. Measure 32 features a second ending bracket with a circled '2' and a '32' below it. Dynamics include 'pp' and '> pp'. There are various performance markings like accents and slurs.

Handwritten musical score for measures 33-35. The score continues on the same four staves. Measure 33 has a fermata over the first two staves. Measure 34 has a fermata over the first two staves. Measure 35 features a triplet of eighth notes in the Cello/Double Bass staff, marked with 'f' and '< 3'. Dynamics include 'pp' and 'f'. There are various performance markings like accents and slurs.

Handwritten musical score for measures 36, 37, and 38. The score is written on four staves. Measure 36 is marked with a circled '3'. Measure 38 is marked with '38'. The notation includes various notes, rests, and dynamic markings such as pp and f . There are also some handwritten annotations like '77' and circled symbols.

Handwritten musical score for measures 39, 40, and 41. Measure 39 is marked with '39', measure 40 with '40', and measure 41 with a circled '4' and '41'. The notation includes notes, rests, and dynamic markings such as pp , fpp , and ppp . There are also handwritten annotations like '77' and circled symbols.

lange halten.

Teil III.

sehr rasch
(heftig)

42 43 44

45 46 47 48

Handwritten musical score for four staves, measures 49-51. The notation includes various notes, rests, and performance markings.

Measure 49: *arco* marking. Measure 50: *Gliss.* marking. Measure 51: Second ending marked with a circled 2.

Handwritten musical score for four staves, measures 52-54. The notation includes various notes, rests, and performance markings.

Measure 52: First ending marked with a circled 3. Measure 53: *777* marking. Measure 54: *777* marking.

③

subito
langsam breit — accel..... Tempo

55

56

III

4

subito -
langsam -
breit — accel..... Tempo →

④

57

58

III

4

59 5 60

61 62 **6** 63

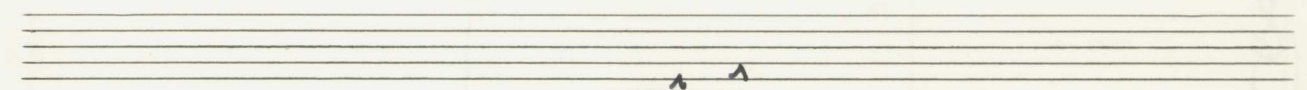
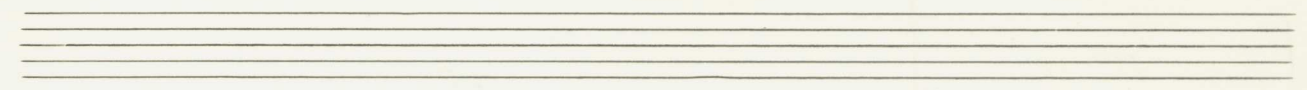
hant

Teil IV.

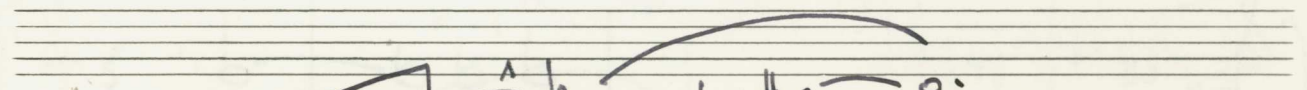
(Pesante) sehr breit + langsam

64 *sub G* 65 66

67 68 69



Handwritten musical score for four staves. The first staff has a treble clef and contains notes with accidentals (sharps and flats) and dynamic markings like *ff* and *fz*. The second and third staves have treble clefs and contain chords and notes. The fourth staff has a bass clef and contains chords. A circled number '1' is written at the end of the system.



Handwritten musical score for four staves. The first staff has a treble clef and contains notes with accidentals and dynamic markings like *heftig.* and *fz*. The second and third staves have treble clefs and contain chords and notes. The fourth staff has a bass clef and contains chords. A circled number '1' is written at the end of the system.

Handwritten musical score for measures 75 and 76. The score is written on four staves (treble and bass clefs). Measure 75 is marked with a circled '2' and measure 76 with a circled '1'. The notation includes various chords and melodic lines, with some notes marked with a sharp sign (#).

Handwritten musical score for measures 77, 78, and 79. The score is written on four staves. Measure 77 is marked with a circled '3', measure 78 with a circled '1', and measure 79 with a circled '4'. The notation includes various chords and melodic lines, with some notes marked with a sharp sign (#) and dynamic markings like 'pp'.

Handwritten musical score for strings, measures 80-81. The score includes staves for Violin I, Violin II, Viola, and Cello/Double Bass. Measure 80 features a *heftig* (forceful) marking and a complex rhythmic pattern with a 7-measure rest. Measure 81 continues the melodic line with various accidentals.

Handwritten musical score for strings, measures 82-83. The score includes staves for Violin I, Violin II, Viola, and Cello/Double Bass. Measure 82 features a *heftig* marking and a complex rhythmic pattern with a 7-measure rest. Measure 83 continues the melodic line with various accidentals.

Solo Viol. 1, measures 84-85. Measure 84 features a *rit. + cresc.* marking and a long note. Measure 85 features a *lunge halten* (long sustain) marking and a *pp* dynamic marking. The score includes a staff for Solo Violin I and a staff for Cello/Double Bass.

Teil V.

so rasch wie möglich || Beginn ppp (ampere crescendo
bis ffff)

Solo
Viol. I.

3/8
ppp
86 1 87 2 88 3 89
90 1 91 2 92 3 93
Viol. 1 pp
Viol. 2 pp

6
98 99 100 101
B

Handwritten musical score for three staves (1, 2, Br.) in treble clef. The first staff is marked with a circled 'p'. The second staff is marked with a circled 'p'. The third staff is marked with a circled 'p' and a crossed-out 'p'. The score includes a six-measure phrase starting at measure 102, followed by measures 103, 104, and 105. The notation includes eighth notes, quarter notes, and rests, with dynamic markings and articulation symbols.

Handwritten musical score for three staves in treble clef. The score includes a six-measure phrase starting at measure 106, followed by measures 107, 108, and 109. The notation includes eighth notes, quarter notes, and rests, with dynamic markings and articulation symbols. A circled 'C' is present at the end of the system.

Handwritten musical score for four staves. The first three staves are in treble clef and marked with 'mf'. The fourth staff is in bass clef and marked with 'mf'. The score includes a six-measure phrase starting at measure 110, followed by measures 111, 112, 113, and 114. The notation includes eighth notes, quarter notes, and rests, with dynamic markings and articulation symbols. A circled 'D' is present at the end of the system, with '115' written below it.

Handwritten musical score for measures 116-120. The score is written for four staves: Violin I, Violin II, Viola, and Cello/Double Bass. Each staff begins with a dynamic marking of *fff* and a *cresc.* hairpin. A bracket labeled '6' spans the first measure of each staff. Measures 116-119 contain rhythmic patterns with various accidentals (flats, sharps, naturals). Measure 120 is a whole rest, enclosed in a box labeled 'E'.

Handwritten musical score for measures 121-124. The score is written for four staves: Violin I, Violin II, Viola, and Cello/Double Bass. Each staff begins with a dynamic marking of *fff* and a *cresc.* hairpin. A bracket labeled '6' spans the first measure of each staff. Measures 121-124 contain rhythmic patterns with various accidentals (flats, sharps, naturals). Measure 124 is a whole rest, enclosed in a box labeled 'F'.

Handwritten musical score for measures 125-128. The score consists of four staves. Measure 125 is marked with a blue '125'. Measure 126 is marked with a blue '126'. Measure 127 is marked with a blue '127'. Measure 128 is marked with a blue '128' and a circled 'G' in the top right corner. The notation includes various rhythmic values, accidentals (sharps, flats, naturals), and dynamic markings like '7fff'.

Handwritten musical score for measures 129-130. The score consists of four staves. Measure 129 is marked with a blue '129'. Measure 130 is marked with a blue '130'. The notation includes performance instructions: 'Subito' above the first staff, 'Sehr' above the second staff, 'Lange' above the third staff, and 'G.P.' above the fourth staff. The instruction 'mit größter Spannung' is written below the fourth staff. The instruction 'Sehr hefte pizz.' is written to the right of the staves. The notation includes pizzicato notes (pizz) and dynamic markings like '7fff'.

Teil VI.

Sehr langsam

Handwritten musical score for measures 131-133. The score is written on four staves. Measure 131 features a first staff with a tremolo and a second staff with a whole note chord. Measure 132 shows a first staff with a whole note chord and a second staff with a whole note chord. Measure 133 continues with a first staff with a whole note chord and a second staff with a whole note chord. Dynamics include *con sord.*, *pp*, and *ppp*. There are also some handwritten annotations like '77' and '77'.

Handwritten musical score for measures 134-136. The score is written on four staves. Measure 134 features a first staff with a whole note chord and a second staff with a whole note chord. Measure 135 shows a first staff with a whole note chord and a second staff with a whole note chord. Measure 136 continues with a first staff with a whole note chord and a second staff with a whole note chord. Dynamics include *pp* and *ppp*. There are also some handwritten annotations like '77' and '77'. A circled 'R' is present at the end of measure 136.

Handwritten musical score for measures 137-139. The score is written on four staves. Measure 137 begins with a *ppp* dynamic marking. The notation includes various note values, rests, and accidentals (sharps and flats). A wavy line is present in the lower staves. The piece concludes with a double bar line and a *ppp* marking.

Handwritten musical score for measures 140-143. The score is written on four staccato staves. Measure 140 features a *ppp* dynamic marking. The notation includes various note values, rests, and accidentals. A wavy line is present in the lower staves. The piece concludes with a double bar line and a *pppp* marking.

Teil VII.

pesante — (frei — sehr stark) $\frac{6}{8}$
(nicht nachkappend)

Handwritten musical score for measures 144 and 145. The score is for four staves: Violin I, Violin II, Viola, and Cello/Double Bass. The music is in 6/8 time. Measure 144 shows a melodic line in Violin I with notes G4, A4, B4, C5, and a fermata. Violin II, Viola, and Cello/Double Bass have sustained notes. Measure 145 continues the melodic line in Violin I with notes C5, B4, A4, G4. Dynamic markings include 'ff' and 'arco'. Performance instructions include 'offen' and 'arco'.

Handwritten musical score for measures 146, 147, and 148. The score is for four staves: Violin I, Violin II, Viola, and Cello/Double Bass. Measure 146 features a complex rhythmic pattern in Violin I with notes G4, A4, B4, C5. Violin II has a sustained note. Measure 147 shows a melodic line in Violin I with notes C5, B4, A4, G4. Violin II has a sustained note. Measure 148 continues the melodic line in Violin I with notes G4, F4, E4, D4. Dynamic markings include 'ff'.

149 150 151 152

din *(p)* *pp*

153 154 155

(p) *(p)* *mf*

Handwritten musical score for measures 156-158. The score is written for four staves (Violin I, Violin II, Viola, and Cello/Double Bass). Measure 156 features a dynamic marking of *f* and a circled *f*. Measure 157 includes a dynamic marking of *pp*. Measure 158 ends with a circled *f*. The notation includes various notes, rests, and articulation marks.

größtes die sind ist.

Handwritten musical score for measures 159-163. The score is written for four staves. Measure 159 has a dynamic marking of *ffpp*. Measure 160 has a circled *ffpp*. Measure 161 has a dynamic marking of *pp*. Measure 162 has a dynamic marking of *ppp*. Measure 163 has a dynamic marking of *pppp*. The notation includes various notes, rests, and articulation marks.

sehr [lange] bis ins Nichts.

Adolf Scherbaum
Linz 1969.