

58,

Toccata für
pr. Orgel

1969 Wien

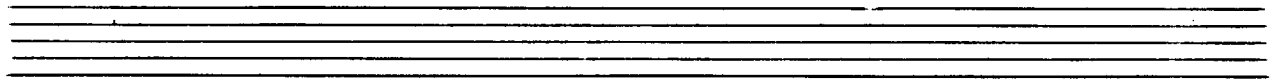
Adolf

Sehermann

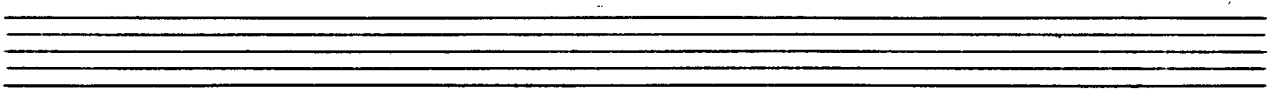
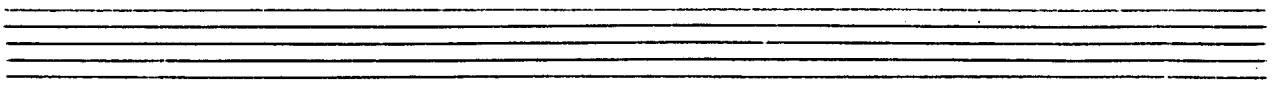
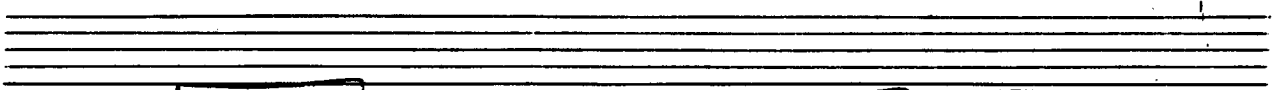
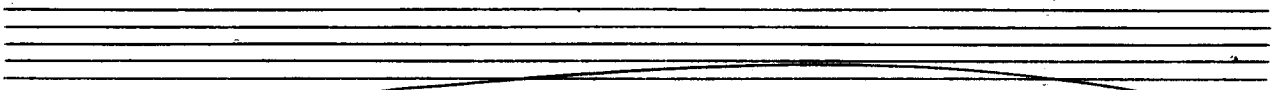
Notenheft

Toccata
1969 August Wien
für gr. Orgel

Adolf Scherbaum



Moderato (frei) (flüchtige Adlibel)



The image shows three systems of handwritten musical notation for organ. Each system consists of two staves: a treble clef staff on top and a bass clef staff on the bottom. The notation is dense and includes various musical symbols such as notes, rests, beams, and slurs. There are several instances of the number '4' written above notes, possibly indicating fingerings or a specific rhythmic value. The first system has a large, sweeping slur under the bass staff. The second system also features a large slur under the bass staff. The third system includes a circled word 'Quasi' with an arrow pointing to the right, positioned above the treble staff. The handwriting is fluid and appears to be a working draft or a personal manuscript.

Cap 4

Handwritten musical notation for the first system. It features a grand staff with treble and bass clefs. The word "cresc." is written above the staff with a large arrow pointing to the right. The music includes various notes, rests, and dynamic markings. A large "4" is written in the left margin. The notation is somewhat sketchy and expressive.

Handwritten musical notation for the second system. It continues the grand staff notation. The word "cresc." is written above the staff with a large arrow pointing to the right. The notation includes notes, rests, and dynamic markings, maintaining the sketchy style of the first system.

Handwritten musical notation for the third system. It continues the grand staff notation. The notation includes notes, rests, and dynamic markings, consistent with the previous systems.

(gut ...)

(frei) (rasch)

Andrit (♩)

quadr

breit (♩) *quadr*.....

lento (♩) *Anditel.*

Handwritten musical notation for the first system. The treble clef staff contains a half note with a flat (Bb), a quarter note (G), a quarter note (F), and a dotted half note (E). The bass clef staff contains a half note (G), a quarter note (F), and a dotted half note (E). The system concludes with a double bar line.

rasch / erregt

Handwritten musical notation for the second system, marked *rasch / erregt*. The treble clef staff features three measures of triplets of eighth notes, each measure containing a slur over the notes. The bass clef staff contains a half note (G), a quarter note (F), and a dotted half note (E) with a sharp sign (#).

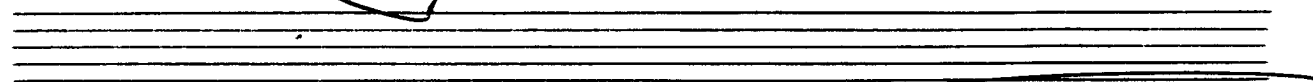
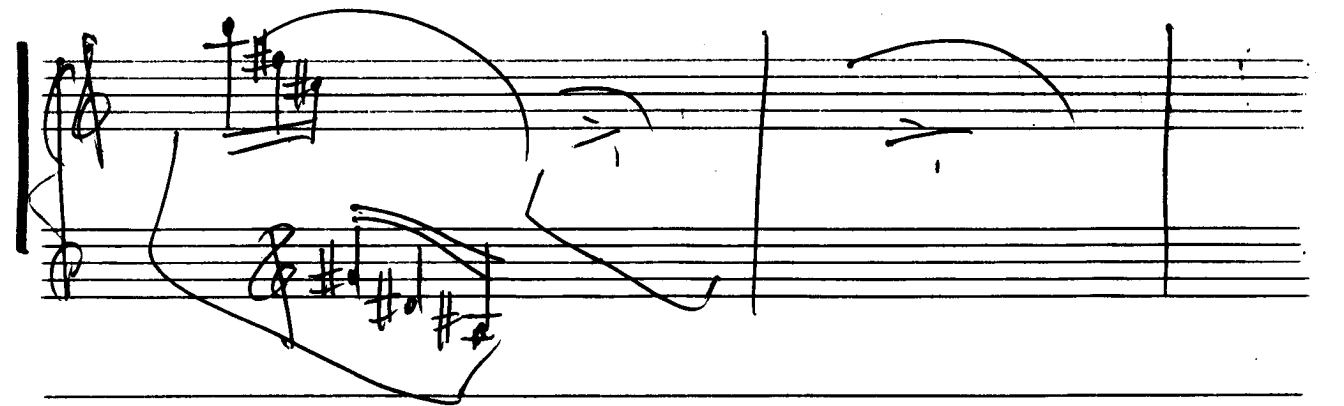
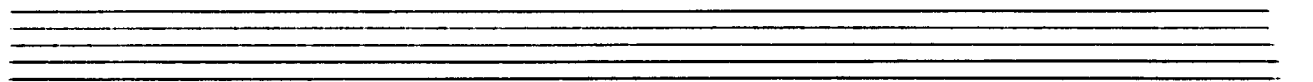
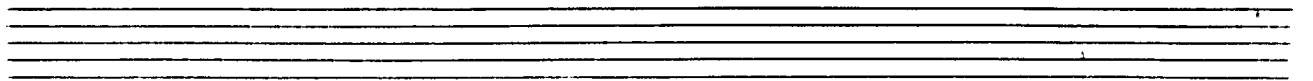
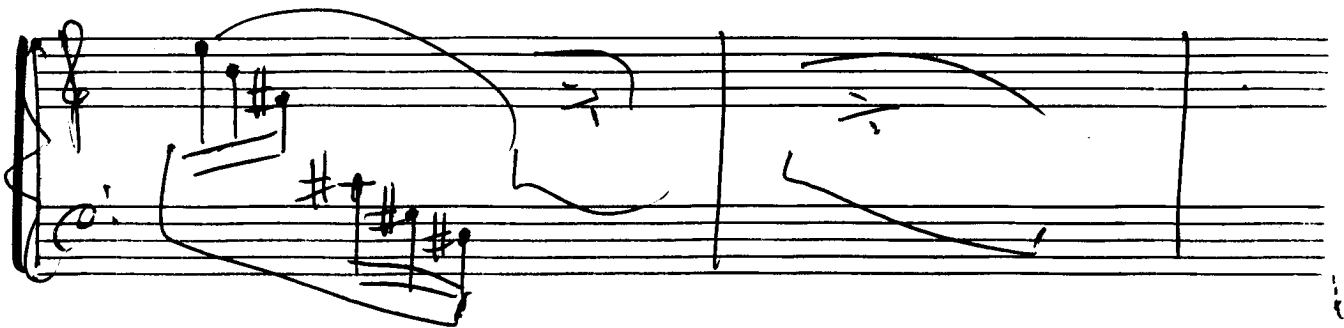
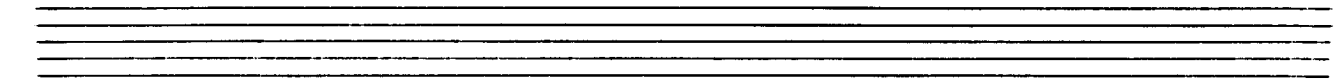
Handwritten musical notation for the third system. The treble clef staff features three measures of triplets of eighth notes, each measure containing a slur over the notes. The bass clef staff contains a half note (G), a quarter note (F), and a dotted half note (E).

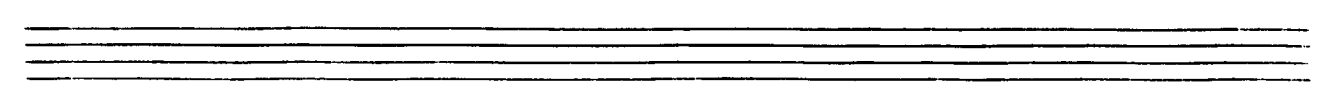
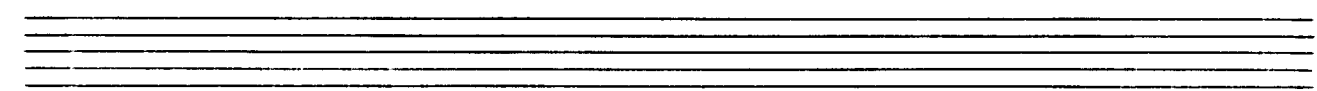
Handwritten musical notation for the fourth system. The treble clef staff features three measures of triplets of eighth notes, each measure containing a slur over the notes. The bass clef staff contains a half note (G), a quarter note (F), and a dotted half note (E).

Presto

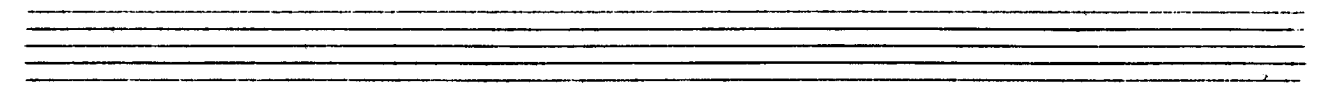
71

$\frac{4}{2}$
 $\frac{8}{4}$

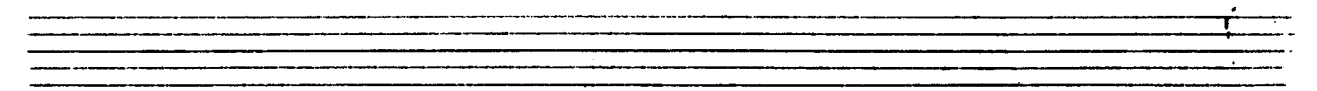




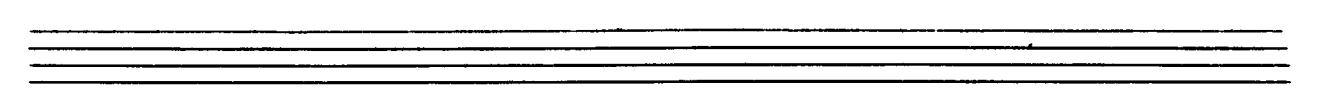
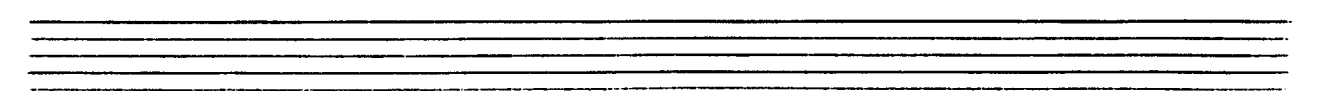
Handwritten musical notation for the first system. The treble clef staff begins with a sharp sign (#) and contains a melodic line with a slur over the first two measures. The bass clef staff contains a bass line with a slur over the first two measures. The second measure of both staves has a handwritten 'b' above it. The system concludes with a double bar line.



Handwritten musical notation for the second system. The treble clef staff begins with a flat sign (b) and contains a melodic line with a slur over the first two measures. The bass clef staff contains a bass line with a slur over the first two measures. The system concludes with a double bar line.



Handwritten musical notation for the third system. The treble clef staff begins with a sharp sign (#) and contains a melodic line with a slur over the first two measures. The bass clef staff contains a bass line with a slur over the first two measures. The system concludes with a double bar line.



Handwritten musical notation for the first system, featuring a treble and bass staff with complex chordal structures and melodic lines.

graves out

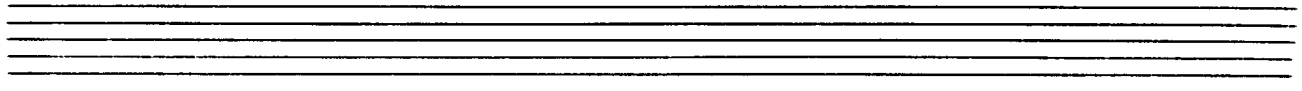
Handwritten musical notation for the second system, including a treble and bass staff with a handwritten annotation "graves out" above the staff.

Adagio (♩)

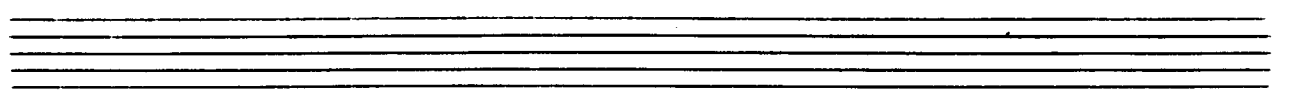
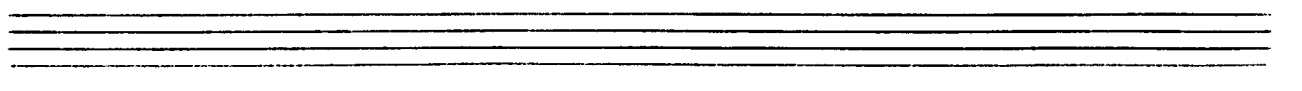
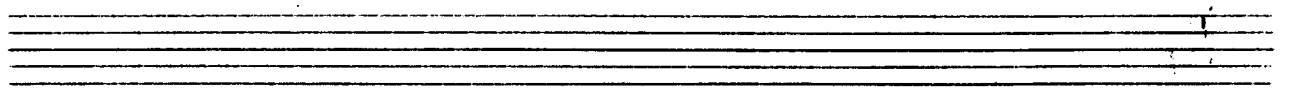
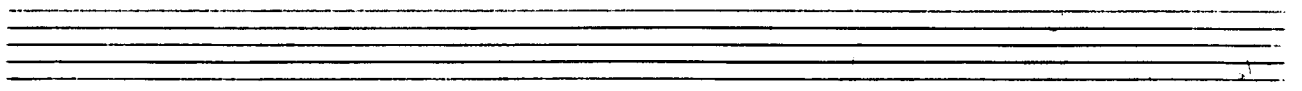
Handwritten musical notation for the third system, marked "Adagio (♩)", showing a 4/8 time signature and complex chordal accompaniment.

graves out

Handwritten musical notation for the fourth system, including a treble and bass staff with a handwritten annotation "graves out" above the staff.



lento (♩) mit großer Ruhe



Handwritten musical notation for the first system. The treble clef staff contains a melodic line with notes G4, A4, B4, C5, D5, E5, F5, G5, A5, B5, C6, D6, E6, F6, G6, A6, B6, C7. The bass clef staff contains accompaniment with notes G3, A3, B3, C4, D4, E4, F4, G4, A4, B4, C5, D5, E5, F5, G5, A5, B5, C6, D6, E6, F6, G6, A6, B6, C7. The system is marked with a large slur over the entire passage.

Handwritten musical notation for the second system. The treble clef staff continues the melodic line with notes G5, A5, B5, C6, D6, E6, F6, G6, A6, B6, C7. The bass clef staff continues the accompaniment with notes G3, A3, B3, C4, D4, E4, F4, G4, A4, B4, C5, D5, E5, F5, G5, A5, B5, C6, D6, E6, F6, G6, A6, B6, C7. The system is marked with a large slur over the entire passage.

Handwritten musical notation for the third system. The treble clef staff contains a melodic line with notes G5, A5, B5, C6, D6, E6, F6, G6, A6, B6, C7. The bass clef staff contains accompaniment with notes G3, A3, B3, C4, D4, E4, F4, G4, A4, B4, C5, D5, E5, F5, G5, A5, B5, C6, D6, E6, F6, G6, A6, B6, C7. The system is marked with a large slur over the entire passage.

Handwritten musical notation for the fourth system. The treble clef staff contains a melodic line with notes G5, A5, B5, C6, D6, E6, F6, G6, A6, B6, C7. The bass clef staff contains accompaniment with notes G3, A3, B3, C4, D4, E4, F4, G4, A4, B4, C5, D5, E5, F5, G5, A5, B5, C6, D6, E6, F6, G6, A6, B6, C7. The system is marked with a large slur over the entire passage. The notation includes dynamic markings: *pp* (pianissimo) at the beginning, *legit* (legitimo) in the middle, and *al Fine!* (ad libitum, fine) at the end, accompanied by a double bar line and a fermata.