

58,

Toccata für
gr. Orgel

1969 Wien

Adolf Scherbaum

Notenheft



Toccata
1969 August Wien
für gr. Orgel

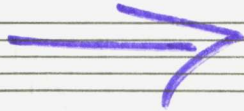
Adolf Scherbaum

Moderato (frei) (flüchtige Adlibel)

Quart. →

(ap4

accel.



accel.



(gut ...)

(frei) (rasch)

breit (♩)

quasi

breit (quasi.....)

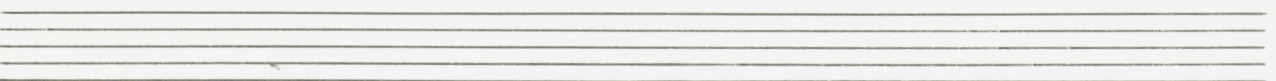
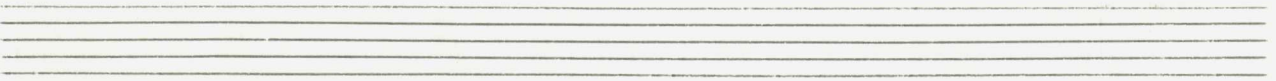
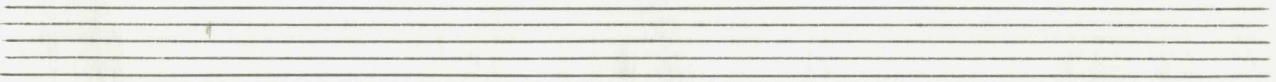
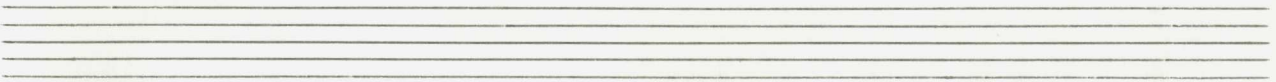
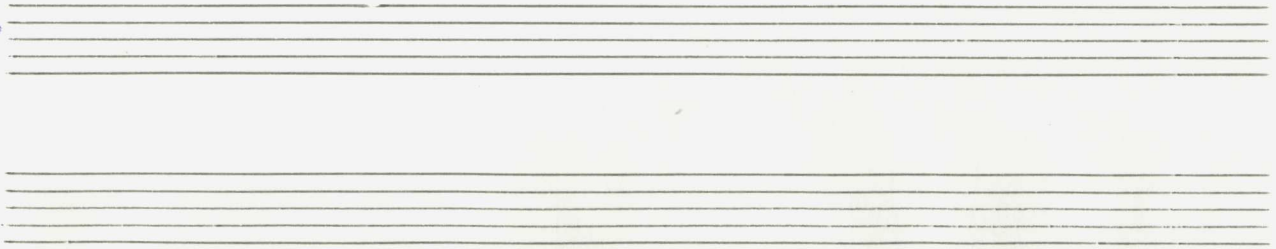
Lupa

Fine

p6p

then

lento (♩) *Anditel*



Handwritten musical notation for the first system. The staff is in treble clef with a key signature of one sharp (F#) and a 9/8 time signature. The notation includes a melodic line with a slur and a bass line with notes and accidentals.

Handwritten musical notation for the second system. The staff is in treble clef with a key signature of one flat (Bb) and a 9/8 time signature. The notation includes a melodic line with a slur and a bass line with notes and accidentals. A box labeled "(rit)" is present.

Handwritten musical notation for the third system. The staff is in treble clef with a key signature of one sharp (F#) and a 9/8 time signature. The notation includes a melodic line with a slur and a bass line with notes and accidentals. The word "trio" is written above the staff.

Handwritten musical notation for the first system. The treble clef staff contains a whole note chord with a flat sign (b) and a 74 below it. The bass clef staff contains a whole note chord with a 74 below it. A slur covers the notes in both staves. To the right, there are additional notes and a sharp sign (#) with a 9 below it. The system ends with a double bar line and repeat dots.

rassch (erregt)

Handwritten musical notation for the second system. The tempo marking *rassch (erregt)* is written above the treble clef staff. The treble clef staff features a triplet of eighth notes in each of the three measures. The bass clef staff has a whole note chord in the first measure and a half note in the second and third measures. A slur covers the notes in both staves.

Handwritten musical notation for the third system. The treble clef staff features a triplet of eighth notes in each of the three measures. The bass clef staff has a whole note chord with a sharp sign (#) in the first measure and a half note in the second and third measures. A slur covers the notes in both staves.

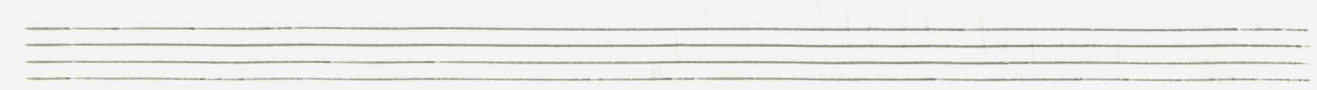
Handwritten musical notation for the fourth system. The treble clef staff features a triplet of eighth notes in each of the three measures. The bass clef staff has a whole note chord with a sharp sign (#) in the first measure and a half note in the second and third measures. A slur covers the notes in both staves.

Handwritten musical notation for the first system. The treble staff shows a melodic line with a triplet of eighth notes and a fermata. The bass staff shows a bass line with a half note and a quarter note, both with a fermata. The key signature is one sharp (F#).

Handwritten musical notation for the second system. The treble staff shows a melodic line with a triplet of eighth notes and a fermata. The bass staff shows a bass line with a half note and a quarter note, both with a fermata. The key signature is one sharp (F#).

Handwritten musical notation for the third system. The treble staff shows a melodic line with a triplet of eighth notes and a fermata. The bass staff shows a bass line with a half note and a quarter note, both with a fermata. The key signature is one sharp (F#).

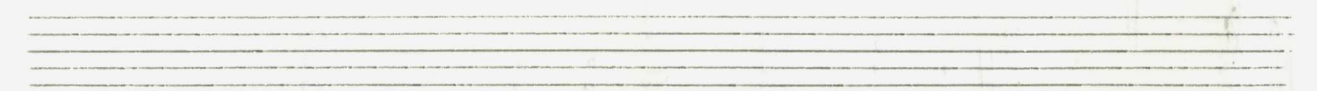
Presto



Handwritten musical notation for the first system. It consists of two staves. The upper staff is in treble clef and the lower staff is in bass clef. The key signature is one sharp (F#). The notation includes several chords and melodic lines, with stems and beams indicating rhythmic values. A blue bracket spans across the first two measures of the upper staff.



Handwritten musical notation for the second system. It consists of two staves. The upper staff is in treble clef and the lower staff is in bass clef. The notation includes several chords and melodic lines, with stems and beams. A blue bracket spans across the first two measures of the upper staff.



Handwritten musical notation for the third system. It consists of two staves. The upper staff is in treble clef and the lower staff is in bass clef. The notation includes several chords and melodic lines, with stems and beams. A blue bracket spans across the first two measures of the upper staff.



Handwritten musical notation for the first system, featuring a treble and bass clef with various notes and accidentals.

größer aus...

Handwritten musical notation for the second system, including a treble and bass clef and a large blue scribble at the end.

Adagio (♩)

Handwritten musical notation for the third system, showing a 4/8 time signature and various notes with dynamics like "p".

quasi...

Handwritten musical notation for the fourth system, featuring a treble and bass clef with notes and a large blue scribble.

lento (♩) mit großer Ruhe

Handwritten musical notation for the first system. It consists of two staves. The upper staff is in treble clef and the lower staff is in bass clef. A circled 'p' indicates a piano dynamic. The music is written in a single system with a long slur over the entire phrase. The first measure contains a half note G4 with a sharp sign, followed by a quarter note A4 with a flat sign, and a quarter note B4 with a flat sign. The second measure contains a half note C5 with a sharp sign, followed by a quarter note D5 with a flat sign, and a quarter note E5 with a flat sign. The bass staff has a similar melodic line with a sharp sign on the first note and flat signs on the subsequent notes.

Handwritten musical notation for the second system. It consists of two staves. The upper staff is in treble clef and the lower staff is in bass clef. The music continues with a long slur. The first measure contains a half note F5 with a sharp sign, followed by a quarter note G5 with a flat sign, and a quarter note A5 with a flat sign. The second measure contains a half note B5 with a sharp sign, followed by a quarter note C6 with a flat sign, and a quarter note D6 with a flat sign. The bass staff continues with a similar melodic line.

Handwritten musical notation for the third system. It consists of two staves. The upper staff is in treble clef and the lower staff is in bass clef. The music concludes with a long slur. The first measure contains a half note E5 with a sharp sign, followed by a quarter note F5 with a flat sign, and a quarter note G5 with a flat sign. The second measure contains a half note A5 with a sharp sign, followed by a quarter note B5 with a flat sign, and a quarter note C6 with a flat sign. The bass staff continues with a similar melodic line.

Handwritten musical notation for the first system. The treble clef staff contains a quarter note G, followed by a half note A with a sharp sign, and a quarter note B with a sharp sign. The bass clef staff contains a quarter note G, followed by a half note A with a sharp sign, and a quarter note B with a sharp sign. The system concludes with a double bar line.

Handwritten musical notation for the second system. The treble clef staff contains a quarter note G, followed by a half note A with a sharp sign, and a quarter note B with a sharp sign. The bass clef staff contains a quarter note G, followed by a half note A with a sharp sign, and a quarter note B with a sharp sign. The system concludes with a double bar line.

Handwritten musical notation for the third system. The treble clef staff contains a quarter note G, followed by a half note A with a sharp sign, and a quarter note B with a sharp sign. The bass clef staff contains a quarter note G, followed by a half note A with a sharp sign, and a quarter note B with a sharp sign. The system concludes with a double bar line.

Handwritten musical notation for the fourth system. The treble clef staff contains a quarter note G, followed by a half note A with a sharp sign, and a quarter note B with a sharp sign. The bass clef staff contains a quarter note G, followed by a half note A with a sharp sign, and a quarter note B with a sharp sign. The system concludes with a double bar line. Performance markings include "pp" (pianissimo) and "al Fine!" (ad libitum, to the end).