

Notenheft

Musik

in 7 Teilen

für Orgel

Orgel

1969 v. Adolf Scherbaum

(gedacht zur Einweihung
der Glockenhalle
in Linz)

(oder als Fests
in St. Florian)

Auf der Orgel

Glockenorgel.

Linz 1969
Adolf Scherbaum



(die Registrierung der Orgel
übertrage ich ganz dem Solisten.
1968. Sieg. Haupt Solobauwerk)

sehr langsam (♩ = 1/4)

♩ = 1/4

post
attacca Teil II.



Teil I

Wohla langsam!

Handwritten musical notation for the first system. The treble staff contains a series of notes with slurs and ties, and a circled 'pp' dynamic marking. The bass staff has notes with rests and a circled '8' marking.

Handwritten musical notation for the second system. The treble staff has notes with a slur and a 'be' marking. The bass staff has notes with a slur and a '#0' marking.

Handwritten musical notation for the third system. The treble staff has notes with a slur and a '(b)' marking. The bass staff has notes with a slur and a '(B)' marking. A circled '(B)' is also present at the end of the system.

ant alluca
Teil III

Teil III

solis gungip (auf $\frac{3}{8}$ Pfeifen)

3.

(auf sehr langsame 4/4)

Handwritten musical score for the first system. It consists of three staves. The top staff has a treble clef and contains a whole rest followed by a melodic line starting with a sharp sign. The middle staff has an alto clef and contains a whole note chord. The bottom staff has a bass clef and contains a whole note chord. Dynamic markings 'pp' are present in each staff. The system is enclosed in a dashed-line box.

Handwritten musical score for the second system. It consists of three staves. The top staff has a treble clef and contains a melodic line with eighth notes. The middle staff has an alto clef and contains a whole note chord. The bottom staff has a bass clef and contains a whole note chord. The system is enclosed in a dashed-line box.

Handwritten musical score for the third system. It consists of three staves. The top staff has a treble clef and contains a melodic line with eighth notes. The middle staff has an alto clef and contains a whole note chord. The bottom staff has a bass clef and contains a whole note chord. Dynamic markings 'pp' are present in each staff. The system is enclosed in a dashed-line box.

Teil II

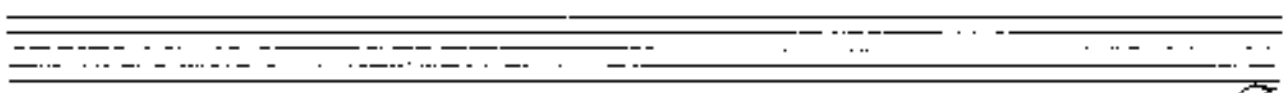
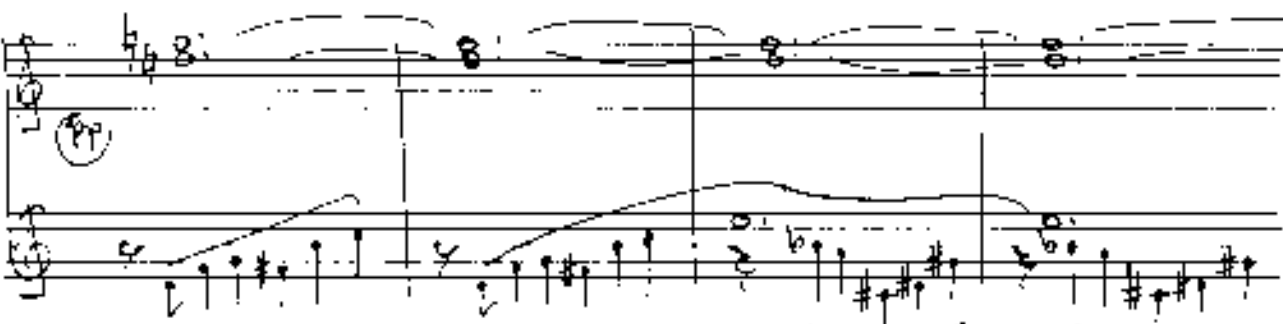
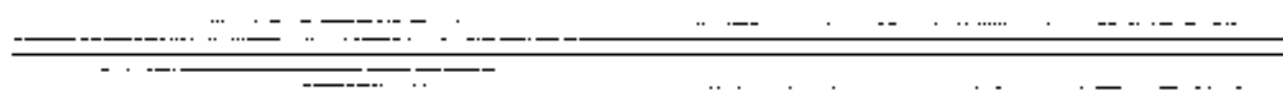
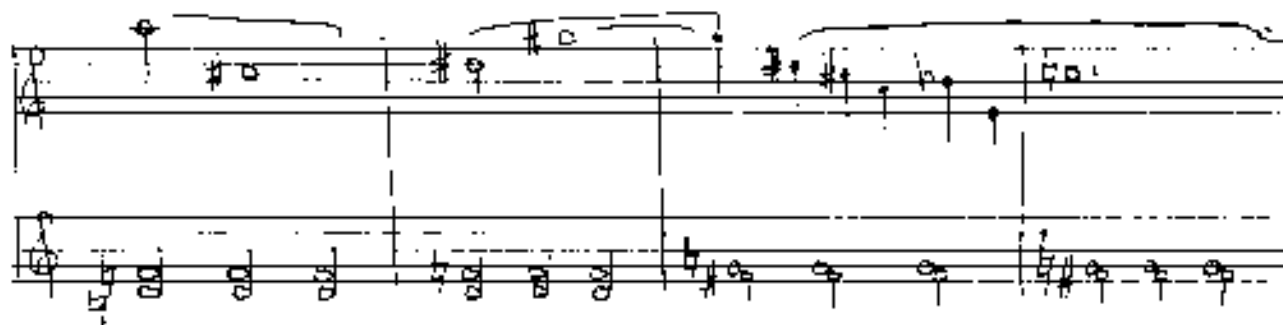
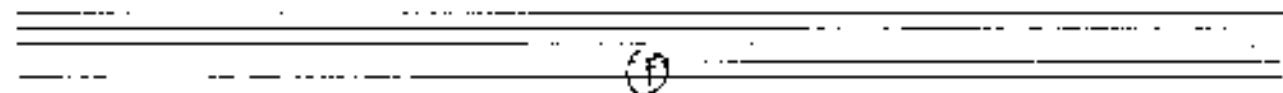
sehr flüchtig $\frac{6}{4}$

Handwritten musical notation for the first system. The top staff is in treble clef and contains a melodic line with slurs and a circled 'P'. The bottom staff is in bass clef and contains a bass line with chords and a 'c.' marking. The time signature is 6/4.

Handwritten musical notation for the second system. The top staff is in treble clef and contains a melodic line with slurs and a circled '11'. The bottom staff is in bass clef and contains a bass line with chords and a 'c.' marking.

Handwritten musical notation for the third system. The top staff is in treble clef and contains a melodic line with slurs and a circled '12'. The bottom staff is in bass clef and contains a bass line with chords and a 'c.' marking.

5.



6.

Teil VI.

Adagio, ruhig (siehe vorher)

Handwritten musical notation for the first system. The top staff is in treble clef with a key signature of one sharp (F#) and a 4/4 time signature. It contains a half note G4, a quarter note A4, and a quarter note B4, followed by a whole rest. The bottom staff is in bass clef and contains a half note G3, a quarter note F3, and a quarter note E3, followed by a whole rest. A circled number '18' is written in the left margin.

Handwritten musical notation for the second system. The top staff continues with a quarter note D5, a quarter note C5, and a quarter note B4, followed by a whole rest. The bottom staff continues with a quarter note D3, a quarter note C3, and a quarter note B2, followed by a whole rest.

Handwritten musical notation for the third system. The top staff contains a quarter note G4, a quarter note A4, and a quarter note B4, followed by a whole rest. The bottom staff contains a half note G3, a quarter note F3, and a quarter note E3, followed by a whole rest. There are accents (^) above the notes in the second measure of both staves.

Handwritten musical notation for the fourth system. The top staff contains a quarter note G4, a quarter note A4, and a quarter note B4, followed by a whole rest. The bottom staff contains a half note G3, a quarter note F3, and a quarter note E3, followed by a whole rest.

Teil VII

auf jedem Teil -
mit allen Wiederholungen

1. *forte* *rit.* alles *breve* (so *randu* als *unmöglich*) wie am *plötzlichen* *Uphören* - *sempre*
rit. *rit.*

(subito) nach als möglich (12/8) auf = halbe Note - sempre *rit.*

AM

12.

Handwritten musical notation for the first system. It consists of three staves: a treble clef staff at the top, a bass clef staff in the middle, and a piano staff at the bottom. The treble staff contains a melodic line with several notes, some marked with accents (^) and a slur. The bass staff contains a bass line with notes and rests, also featuring accents and slurs. The piano staff shows chordal accompaniment with notes and rests. A circled '4' is written in the left margin of the treble staff.

Handwritten musical notation for the second system, continuing the piece. It features the same three-staff layout: treble, bass, and piano. The treble staff continues the melodic line with a slur and an accent. The bass staff has notes with slurs and accents. The piano staff shows chordal accompaniment with slurs and accents. A circled '4' is written in the left margin of the treble staff.

Handwritten musical notation for the third system, concluding the piece. It features the same three-staff layout: treble, bass, and piano. The treble staff continues the melodic line with a slur and an accent. The bass staff has notes with slurs and accents. The piano staff shows chordal accompaniment with slurs and accents. A circled '4' is written in the left margin of the treble staff.

Handwritten musical score system 1, consisting of three staves. The top staff features a melodic line with various accidentals (sharps, flats, naturals) and a long slur. The middle staff contains chordal accompaniment with some rhythmic markings. The bottom staff shows a bass line with a long slur. The system is enclosed in a dashed-line box.

Handwritten musical score system 2, consisting of three staves. The top staff continues the melodic line with a long slur. The middle staff has chordal accompaniment. The bottom staff shows a bass line with a long slur. The system is enclosed in a dashed-line box.

Handwritten musical score system 3, consisting of three staves. The top staff continues the melodic line with a long slur. The middle staff has chordal accompaniment. The bottom staff shows a bass line with a long slur. The system is enclosed in a dashed-line box.

Handwritten musical score for the first system. It consists of three staves. The top staff contains a melodic line with notes and rests, including a circled sharp sign (#) above the first measure. The middle staff contains a more complex melodic line with many notes and rests, also featuring a circled sharp sign (#) above the first measure. The bottom staff contains a bass line with notes and rests, including a circled sharp sign (#) above the first measure and a circled sharp sign (#) with a '10' below it in the second measure.

Handwritten musical score for the second system. It consists of three staves. The top staff contains a melodic line with notes and rests, including a circled sharp sign (#) above the first measure. The middle staff contains a more complex melodic line with many notes and rests, also featuring a circled sharp sign (#) above the first measure. The bottom staff contains a bass line with notes and rests, including a circled sharp sign (#) above the first measure and a circled sharp sign (#) with a '10' below it in the second measure.

Handwritten musical score for the third system. It consists of three staves. The top staff contains a melodic line with notes and rests, including a circled sharp sign (#) above the first measure. The middle staff contains a more complex melodic line with many notes and rests, also featuring a circled sharp sign (#) above the first measure. The bottom staff contains a bass line with notes and rests, including a circled sharp sign (#) above the first measure and a circled sharp sign (#) with a '10' below it in the second measure.

15.

Handwritten musical score system 1. It consists of three staves. The top staff is a vocal line with a melodic line and a slur. The middle staff is a piano accompaniment with a rhythmic pattern of eighth notes. The bottom staff shows chordal accompaniment with notes and stems.

Handwritten musical score system 2. It consists of three staves. The top staff is a vocal line with a melodic line and a slur. The middle staff is a piano accompaniment with a rhythmic pattern of eighth notes. The bottom staff shows chordal accompaniment with notes and stems.

*(mit diesen
Wiederholungen
dann weiter!!)*

Handwritten musical score system 3. It consists of three staves. The top staff is a vocal line with a melodic line and a slur. The middle staff is a piano accompaniment with a rhythmic pattern of eighth notes. The bottom staff shows chordal accompaniment with notes and stems.

fast - al fresco

(wie ein Chor)

oder langsam - oder breit
ausbreitend

Handwritten musical notation for the first system. It consists of three staves. The top staff has a treble clef and contains a whole note chord with a flat sign. The middle staff has a treble clef and contains a whole note chord with a flat sign. The bottom staff has a bass clef and contains a whole note chord with a flat sign. There are various markings, including a 'p' (piano) and an 'f' (forte) dynamic marking, and some handwritten annotations like '20' and '4'.

Handwritten musical notation for the second system. It consists of three staves. The top staff has a treble clef and contains a whole note chord with a flat sign. The middle staff has a treble clef and contains a whole note chord with a flat sign. The bottom staff has a bass clef and contains a whole note chord with a flat sign. There are various markings, including a 'p' (piano) and an 'f' (forte) dynamic marking, and some handwritten annotations like '20' and '4'.

