

Notenheft

Musik
in 7 Teilen

für große
Orgel

1969 v. Adolf Scherbaum

(gedacht zur Einweihung
der Brucknerhalle
in Linz)

(oder als Feier
in St. Florian)

Auf der herrlichen

Bruckner Orgel.

Linz 1969

Adolf Scherbaum

Teil I.

(die Registrierung der Orgel
überlasse ich ganz dem Solisten.
1968. Lizy. Adolf Scherbaum)

Sehr langsam (4/4)

ORGEL

fant
attacca Teil II.

Teil II.

(sehr langsam)

fast allucina
Teil III.

2.

Teil III.

sehr ruhig (auf $\frac{8}{8}$ Achtel)

Handwritten musical notation for the first system. It consists of two staves: a treble clef staff and a bass clef staff. The time signature is 4/4. The music begins with a circled 'p' (piano) dynamic marking. The treble staff contains a melodic line with notes and rests, including a sharp sign. The bass staff contains a rhythmic accompaniment with notes and rests, including a flat sign. A slur covers the first two measures of the treble staff, and another slur covers the last two measures. A circled 'p' is also present in the bass staff.

Handwritten musical notation for the second system. It consists of two staves: a treble clef staff and a bass clef staff. The treble staff has a long note with a sharp sign, followed by a rest. The bass staff contains a melodic line with notes and rests, including a sharp sign. A slur covers the first two measures of the bass staff.

Handwritten musical notation for the third system. It consists of two staves: a treble clef staff and a bass clef staff. The treble staff contains a melodic line with notes and rests, including a flat sign and a sharp sign. A circled 'C' is at the end of the treble staff. The bass staff contains a rhythmic accompaniment with notes and rests, including a sharp sign. A slur covers the first two measures of the bass staff.

3.

(auf sehr langsame $\frac{4}{4}$)

Handwritten musical score for the first system, consisting of three staves. The top staff (treble clef) contains a melodic line with notes, rests, and dynamic markings. The middle staff (alto clef) and bottom staff (bass clef) contain accompaniment with notes, rests, and dynamic markings. The tempo is indicated as 'auf sehr langsame' and the time signature as $\frac{4}{4}$.

Handwritten musical score for the second system, continuing the notation from the first system. It features three staves with notes, rests, and dynamic markings.

Handwritten musical score for the third system, concluding the piece. It features three staves with notes, rests, and dynamic markings. The final measure is marked with a circled 'D'.

Teil IV.

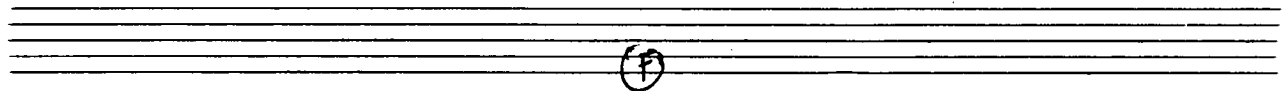
sehr ruhige $\frac{6}{4}$

Handwritten musical notation for the first system. The treble clef staff contains a circled 'p' and a series of notes with a slur. The bass clef staff contains notes with slurs and accents.

Handwritten musical notation for the second system. The treble clef staff has notes with slurs. The bass clef staff has notes with slurs and accents. A circled 'E' is at the end of the system.

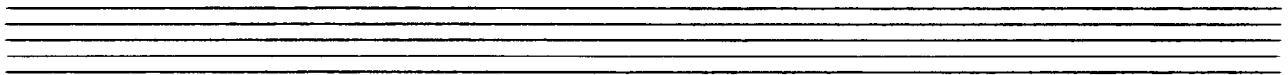
Handwritten musical notation for the third system. The treble clef staff has notes with a circled 'be' above the final note. The bass clef staff has notes with slurs.

Handwritten musical notation for the fourth system. The treble clef staff has a large '5' written below it. The bass clef staff has notes with slurs.



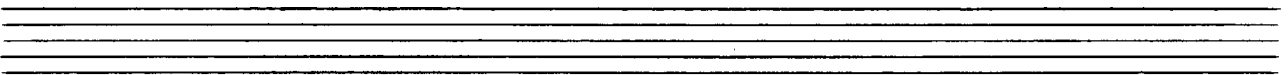
(F)

Handwritten musical notation for the first system, consisting of two staves. The upper staff features a melodic line with various accidentals (sharps, naturals, flats) and a long slur. The lower staff contains a bass line with chords and individual notes.

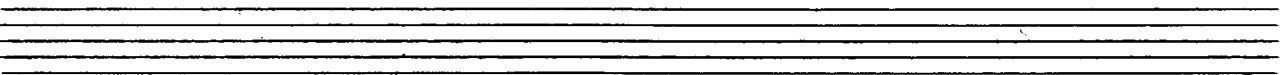


(G)

Handwritten musical notation for the second system, consisting of two staves. The upper staff has a melodic line with a long slur. The lower staff features a bass line with chords and a melodic line.



Handwritten musical notation for the third system, consisting of two staves. The upper staff contains chords with a long slur. The lower staff has a melodic line with a long slur and various accidentals.



(H)

Handwritten musical notation for the fourth system, consisting of two staves. The upper staff shows chords and a long slur. The lower staff has a melodic line with a long slur and various accidentals.

6

Teil V.

sehr breit

Handwritten musical score for the first system. It consists of three staves: a treble clef staff at the top, a grand staff (treble and bass clefs) in the middle, and a bass clef staff at the bottom. The treble staff contains a melodic line with various accidentals and slurs. The grand staff contains accompaniment with chords and moving lines. The bass staff contains a simple bass line with some slurs. There are some circled markings in the treble and grand staves.

Handwritten musical score for the second system, continuing the notation from the first system. It features the same three-staff structure with treble, grand, and bass clefs. The melodic and accompaniment lines continue across three measures.

Handwritten musical score for the third system, continuing the notation from the second system. It features the same three-staff structure. The melodic and accompaniment lines continue across three measures.

7.

Handwritten musical score for the first system. The top staff is in treble clef and contains a melodic line with a key signature of one sharp (F#) and a common time signature. The bottom two staves are in grand staff (treble and bass clefs) and contain piano accompaniment. The music is divided into three measures by vertical bar lines.

Handwritten musical score for the second system. It continues the melodic line in the top staff and the piano accompaniment in the grand staff. The key signature remains one sharp. The system is divided into three measures.

Handwritten musical score for the third system, concluding the piece. The top staff features a melodic line that ends with a double bar line. The grand staff accompaniment also concludes. The system is divided into three measures. To the right of the final measure, the word "FIN." is written vertically. The key signature is one sharp.

Teil VI.

sehr ruhig (sehr einfach)

Handwritten musical notation for the first system. The top staff is in treble clef with a key signature of one sharp (F#) and a 4/4 time signature. The bottom staff is in bass clef. The music consists of two measures. The first measure has a treble staff with a quarter note G4, a quarter note A4, and a quarter note B4, followed by a whole rest. The bass staff has a half note G3, a half note F3, and a half note E3. The second measure has a treble staff with a quarter note G4, a quarter note A4, and a quarter note B4, followed by a quarter rest. The bass staff has a half note G3, a half note F3, and a half note E3.

Handwritten musical notation for the second system. The top staff is in treble clef with a key signature of one sharp (F#) and a 4/4 time signature. The bottom staff is in bass clef. The music consists of two measures. The first measure has a treble staff with a quarter note G4, a quarter note A4, and a quarter note B4, followed by a quarter rest. The bass staff has a half note G3, a half note F3, and a half note E3. The second measure has a treble staff with a quarter note G4, a quarter note A4, and a quarter note B4, followed by a quarter note C5. The bass staff has a half note G3, a half note F3, and a half note E3.

Handwritten musical notation for the third system. The top staff is in treble clef with a key signature of one sharp (F#) and a 4/4 time signature. The bottom staff is in bass clef. The music consists of two measures. The first measure has a treble staff with a quarter note G4, a quarter note A4, and a quarter note B4, followed by a quarter rest. The bass staff has a half note G3, a half note F3, and a half note E3. The second measure has a treble staff with a whole note G4. The bass staff has a half note G3, a half note F3, and a half note E3.

Handwritten musical notation for the fourth system. The top staff is in treble clef with a key signature of one sharp (F#) and a 4/4 time signature. The bottom staff is in bass clef. The music consists of two measures. The first measure has a treble staff with a whole rest. The bass staff has a half note G3, a half note F3, and a half note E3. The second measure has a treble staff with a whole rest. The bass staff has a half note G3, a half note F3, and a half note E3.

Teil VII.

(auf jeden Fall - mit allen Wiederholungen !!)

Presto (fff) volles Werk (so rasch als möglich) wie im plötzlichen Organo - sempre volles Werk - fff

Handwritten musical score for the first system. It consists of three staves: treble, middle, and bass. The treble staff has a melodic line with notes and accidentals. The middle staff has a similar melodic line. The bass staff has a simple accompaniment with notes and rests. There are several dynamic markings: *fff* in circles on the treble and middle staves, and *fff* in a circle on the bass staff. There are also some handwritten annotations in German: "(subito) ²⁰ ~~rasch~~ rasch (12/8) auf 4 Solböge - sempre fff".

Handwritten musical score for the second system. It continues the three-staff format. The treble and middle staves have melodic lines with notes and accidentals. The bass staff has a simple accompaniment. There are some dynamic markings and handwritten annotations.

Handwritten musical score for the third system. It continues the three-staff format. The treble and middle staves have melodic lines with notes and accidentals. The bass staff has a simple accompaniment. There are some dynamic markings and handwritten annotations.

M

Handwritten musical score for the first system. It consists of three staves: treble, alto, and bass. The treble staff contains a melodic line with notes and accidentals, including a flat (b) and several sharps (#). The alto and bass staves provide harmonic support with chords and rests. The system concludes with a double bar line and repeat signs.

Handwritten musical score for the second system. It continues the piece with similar notation. The treble staff has a melodic line with a square box at the end. The alto and bass staves have chords and rests. The system concludes with a double bar line and repeat signs.

Handwritten musical score for the third system. It consists of three staves: treble, alto, and bass. The treble staff contains a melodic line with notes and accidentals, including a flat (b) and several sharps (#). The alto and bass staves provide harmonic support with chords and rests. The system concludes with a double bar line and repeat signs.

12.

Handwritten musical score for the first system, featuring three staves with treble, alto, and bass clefs. The music includes various notes, rests, and dynamic markings.

Handwritten musical score for the second system, featuring three staves with treble, alto, and bass clefs. The music includes various notes, rests, and dynamic markings.

Handwritten musical score for the third system, featuring three staves with treble, alto, and bass clefs. The music includes various notes, rests, and dynamic markings.

Handwritten musical score for the first system. It consists of three staves. The top staff is in treble clef, the middle in alto clef, and the bottom in bass clef. The music includes various notes, rests, and accidentals, with a large slur spanning across the first two measures.

Handwritten musical score for the second system. It consists of three staves. The top staff is in treble clef, the middle in alto clef, and the bottom in bass clef. The music includes various notes, rests, and accidentals, with a large slur spanning across the first two measures.

Handwritten musical score for the third system. It consists of three staves. The top staff is in treble clef, the middle in alto clef, and the bottom in bass clef. The music includes various notes, rests, and accidentals, with a large slur spanning across the first two measures.

Handwritten musical score for the first system. The treble clef part has a key signature of one flat (B-flat) and contains a melodic line with notes and rests. The bass clef part has a key signature of three sharps (F#, C#, G#) and contains a more active line with many notes. There are several circled sharps in the bass clef part, and a circled flat in the treble clef part. Dynamic markings like accents and slurs are present.

Handwritten musical score for the second system. The treble clef part continues the melodic line with a key signature of one flat. The bass clef part continues the active line with a key signature of three sharps. There are accents and slurs over notes in both parts.

Handwritten musical score for the third system. The treble clef part features more complex rhythmic patterns with slurs and accents. The bass clef part continues with a key signature of three sharps and includes a circled sharp and a circled flat.

15.

Handwritten musical score for the first system. It consists of three staves: a treble clef staff at the top, an alto clef staff in the middle, and a bass clef staff at the bottom. The music includes various note values, rests, and dynamic markings such as \hat{p} and \hat{f} . A large slur covers the first two staves across the system.

Handwritten musical score for the second system, following the same three-staff format as the first. It includes notes, rests, and dynamic markings like \hat{p} and \hat{f} . A large slur is present over the first two staves. An arrow points to a specific note in the middle staff.

*(mit allen
Wiederholungen
dann weiter!!*

Handwritten musical score for the third system, continuing the three-staff format. It features notes, rests, and dynamic markings. A large slur covers the first two staves. On the right side, there is a vertical line with a dashed line extending upwards, and the text *hart - abbrechen* written vertically.

(wie ein Choral)

sehr langsam - sehr breit
ausstehend

17.

Handwritten musical score for the first system. It consists of three staves. The top two staves are treble clef, and the bottom staff is bass clef. The music includes notes, rests, and dynamic markings such as accents (^) and a hairpin crescendo. The key signature has one flat (B-flat).

Handwritten musical score for the second system. It consists of three staves. The top two staves are treble clef, and the bottom staff is bass clef. The music includes notes, rests, and dynamic markings. The key signature changes to two sharps (D major).

Handwritten musical score for the third system. It consists of three staves. The top two staves are treble clef, and the bottom staff is bass clef. The music includes notes, rests, and dynamic markings. A handwritten instruction "(größtes pit.....)" is written above the first measure. The piece concludes with a double bar line and the word "FIN" written vertically. The composer's name "Adolf Scherbaum" is written at the bottom right.