

SONATE FÜR
FLÖTE PIANO

Teil 1

BASS SCHLAGZEUG
(Vibraphon)

(Ballett)

(ad lib.) 3 Pos. u. neu (dazu)
in Partitur nicht eingetragen

1969 Rudolf Scherbaum

Ruhig (Lento) (2te schon (Moderato assai))

1 2

Flöte

PIANO

Bass

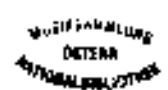
Schlagz.

(2te accel.)

Detailed description of the first system: This system contains the first four measures of the piece. The Flute part has rests in the first two measures and then enters in the third measure with a melodic line. The Piano part begins with a piano (p) dynamic and features a series of chords and moving lines. The Bass and Vibraphon parts provide a rhythmic accompaniment with specific patterns and dynamics. The tempo marking '(2te accel.)' is written above the Flute staff in the third measure.

Moderato assai

Detailed description of the second system: This system contains measures 5 through 8. The Flute part continues its melodic development. The Piano part features a prominent triplet in the eighth measure. The Bass and Vibraphon parts continue their accompaniment. Dynamics such as piano (p) and mezzo-forte (mf) are used throughout. The tempo marking 'Moderato assai' is written above the first measure of this system.



Handwritten musical score for the first system. It consists of a treble clef staff at the top, a grand staff (piano and bass staves) in the middle, and a bass line at the bottom. The key signature has one sharp (F#). The music includes various notes, rests, and dynamic markings such as 'p' (piano). There are also some annotations like '3' and 'f'.

Handwritten musical score for the second system. It continues the piece with similar notation to the first system, including a treble clef staff, a grand staff, and a bass line. The key signature remains one sharp (F#). The music includes various notes, rests, and dynamic markings. There are also some annotations like '3' and 'f'.

Handwritten musical score for the first system. It consists of three staves: a treble clef staff at the top, a grand staff (violin and cello) in the middle, and a bass clef staff at the bottom. The treble staff contains a melodic line with various ornaments and a dynamic marking of *f*. The grand staff provides harmonic support with chords and single notes. The bass staff has a rhythmic bass line. The key signature has one sharp (F#).

Handwritten musical score for the second system, beginning with circled numbers 3, 8, and 15. It follows the same three-staff layout as the first system. The treble staff has a melodic line with a dynamic marking of *f*. The grand staff continues the harmonic accompaniment. The bass staff features a bass line with a triplet of eighth notes in the final measure. The key signature remains one sharp (F#).

Handwritten musical score for the first system. It consists of a grand staff with a treble clef on the top line and a bass clef on the bottom line. The music is written in a key with one flat (B-flat major or D minor). The first measure has a circled '1' in the bass clef. The second measure has a circled '2'. The third measure has a circled '3'. The fourth measure has a circled '4'. The fifth measure has a circled '5'. The sixth measure has a circled '6'. The seventh measure has a circled '7'. The eighth measure has a circled '8'. The ninth measure has a circled '9'. The tenth measure has a circled '10'. The eleventh measure has a circled '11'. The twelfth measure has a circled '12'. The thirteenth measure has a circled '13'. The fourteenth measure has a circled '14'. The fifteenth measure has a circled '15'. The sixteenth measure has a circled '16'. The seventeenth measure has a circled '17'. The eighteenth measure has a circled '18'. The nineteenth measure has a circled '19'. The twentieth measure has a circled '20'. The score includes various musical notations such as notes, rests, beams, and dynamic markings like 'p' and 'f'.

Handwritten musical score for the second system. It continues the piece with similar notation. The first measure has a circled '21'. The second measure has a circled '22'. The third measure has a circled '23'. The fourth measure has a circled '24'. The fifth measure has a circled '25'. The sixth measure has a circled '26'. The seventh measure has a circled '27'. The eighth measure has a circled '28'. The ninth measure has a circled '29'. The tenth measure has a circled '30'. The eleventh measure has a circled '31'. The twelfth measure has a circled '32'. The thirteenth measure has a circled '33'. The fourteenth measure has a circled '34'. The fifteenth measure has a circled '35'. The sixteenth measure has a circled '36'. The seventeenth measure has a circled '37'. The eighteenth measure has a circled '38'. The nineteenth measure has a circled '39'. The twentieth measure has a circled '40'. The score includes various musical notations such as notes, rests, beams, and dynamic markings like 'p' and 'f'.

4 9 16

Handwritten musical score for the first system, measures 4, 9, and 16. The score is written on a grand staff with a treble clef on the upper staff and a bass clef on the lower staff. The key signature has one flat (B-flat). Measure 4 contains a melodic line in the treble clef with notes G4, A4, Bb4, C5, D5, E5, F5, G5, and a bass line with notes Bb2, C3, D3, E3. Measure 9 contains a melodic line in the treble clef with notes G4, Ab4, Bb4, C5, D5, E5, F5, G5 and a bass line with notes Bb2, C3, D3, E3. Measure 16 contains a melodic line in the treble clef with notes G4, Ab4, Bb4, C5, D5, E5, F5, G5 and a bass line with notes Bb2, C3, D3, E3. There are some handwritten annotations and markings throughout the score.

Handwritten musical score for the second system, measures 4, 9, and 16. The score is written on a grand staff with a treble clef on the upper staff and a bass clef on the lower staff. The key signature has one flat (B-flat). Measure 4 contains a melodic line in the treble clef with notes G4, A4, Bb4, C5, D5, E5, F5, G5 and a bass line with notes Bb2, C3, D3, E3. Measure 9 contains a melodic line in the treble clef with notes G4, Ab4, Bb4, C5, D5, E5, F5, G5 and a bass line with notes Bb2, C3, D3, E3. Measure 16 contains a melodic line in the treble clef with notes G4, Ab4, Bb4, C5, D5, E5, F5, G5 and a bass line with notes Bb2, C3, D3, E3. There are some handwritten annotations and markings throughout the score.

Handwritten musical score for the first system. It consists of five staves. The top staff is a vocal line with a treble clef, containing a melodic line with various notes, rests, and slurs. The second and third staves are piano accompaniment, with a grand staff (treble and bass clefs) and a brace on the left. The fourth and fifth staves are additional piano parts, with a bass clef and a brace on the left. The score is divided into four measures by vertical bar lines. There are several annotations, including circled numbers 5 and 10, and circled musical symbols.

Handwritten musical score for the second system, continuing the composition. It consists of five staves, similar in layout to the first system. The top staff is a vocal line with a treble clef, featuring a melodic line with notes, rests, and slurs. The second and third staves are piano accompaniment, with a grand staff and a brace on the left. The fourth and fifth staves are additional piano parts, with a bass clef and a brace on the left. The score is divided into four measures by vertical bar lines. At the bottom of the page, there is a small number '6' and some faint text.

Handwritten musical score for the first system. It consists of four measures. The top staff (treble clef) contains notes with various accidentals (sharps, flats, naturals) and accents (^). The second and third staves (piano part, grand staff) show complex rhythmic patterns with many notes and accidentals. The bottom staff (bass clef) contains a series of notes, some with slurs. Vertical bar lines separate the four measures.

Handwritten musical score for the second system, continuing from the first system. It also consists of four measures. The notation is similar to the first system, with complex rhythmic patterns and many accidentals. On the right side of the system, there are three circled numbers: 6, 11, and 18, likely indicating measure numbers. A circled symbol is also present at the top right of the system. The bottom staff shows notes with slurs and accents.

dim

1.

Handwritten musical score for system 1. It features a grand staff with five staves. The top two staves are for strings, the middle two for woodwinds, and the bottom for piano. The piano part includes a "Solo" section with a melodic line and a "dim" marking. The woodwind part has a "Vln" marking. The string part has a "p" marking. The system ends with a circled "12".

2.

Handwritten musical score for system 2. It features a grand staff with five staves. The top two staves are for strings, the middle two for woodwinds, and the bottom for piano. The piano part includes a "Solo" section with a melodic line and a "dim" marking. The woodwind part has a "Vln" marking. The string part has a "p" marking. The system ends with a circled "12".

Flöte Solo (frei gestalten) (über Hall?)

(rit)

p *Ruhig*

(poco rit)

accel.
reschi

Lento (trai)

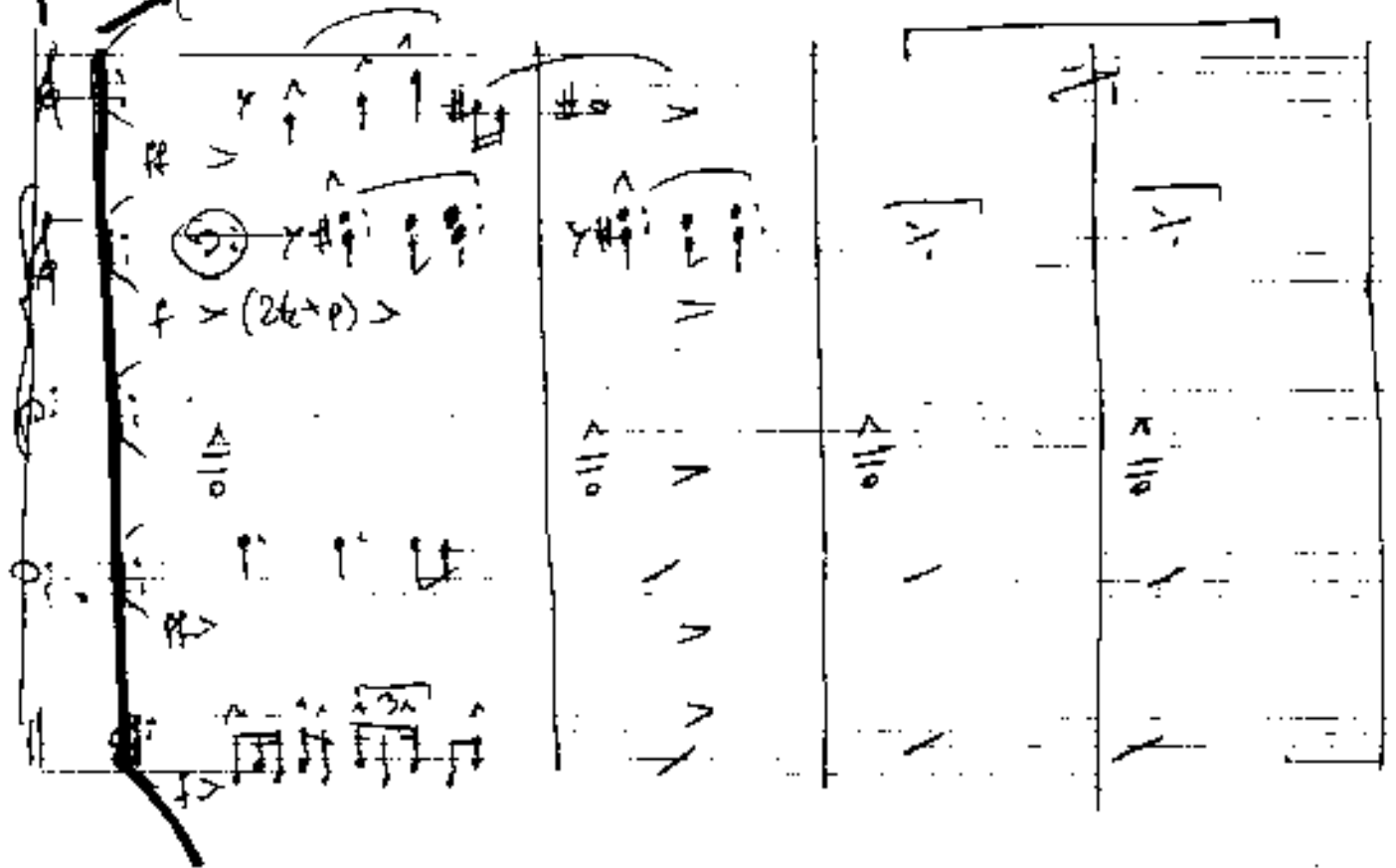
legg.

14 *pal*

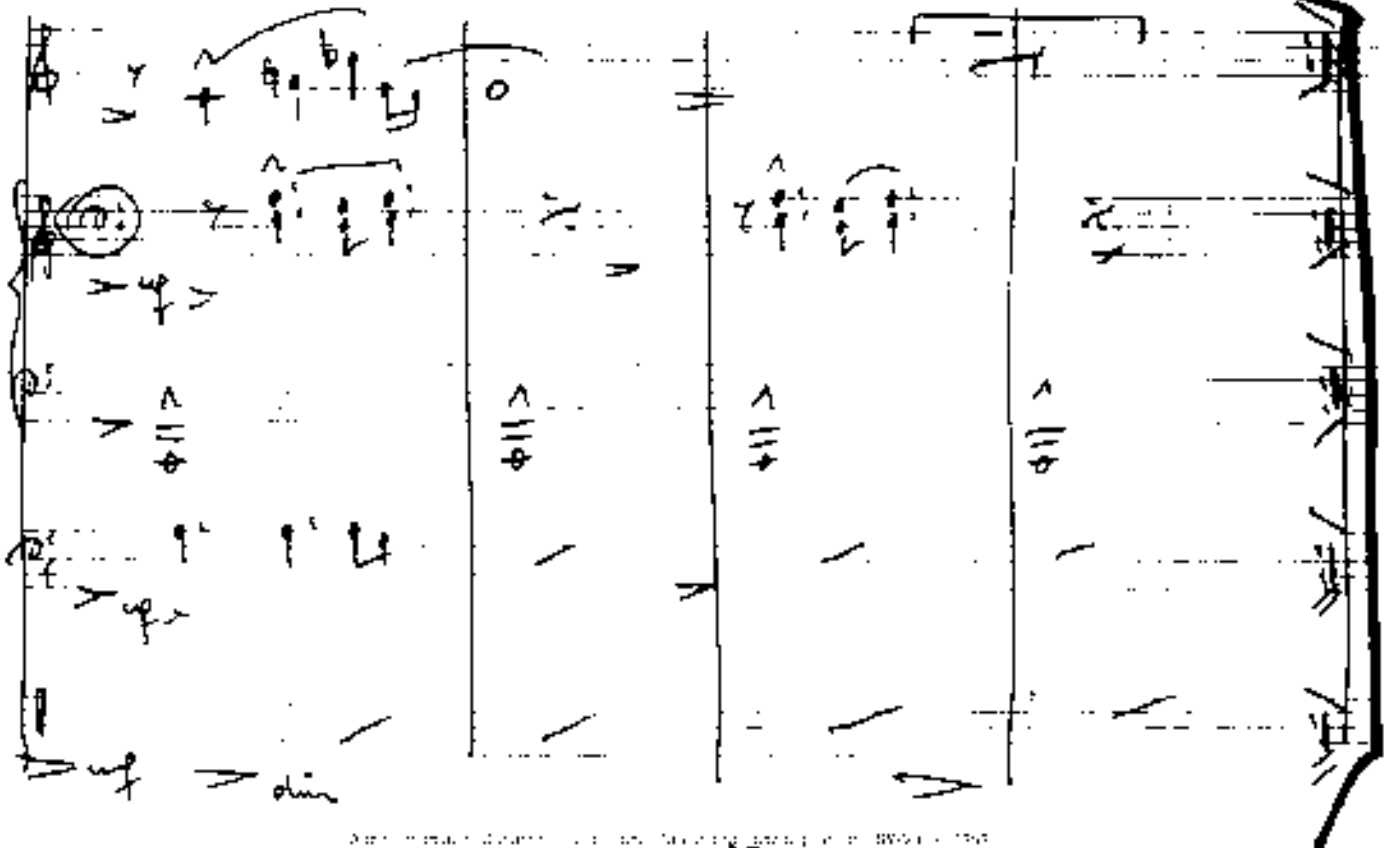


sempre din

(26 vit)



(19) (20)



Teil 2

fröhlich - prest

Flöte

VIBR.

3

4

① Pedal

① ③

⑪

①

②

(frei)

rit - ritua

Pedal

Fl.

VIBR.

Pedal

Pedal

Pedal

frei)

Handwritten musical score for the first system. The treble clef staff has a key signature of one sharp (F#) and a common time signature (C). The bass clef staff is labeled "Pedal (ff)" and contains a series of notes on a single pitch. The melodic line in the treble staff consists of several measures with notes and accidentals, including a large slur over the final measures.

(robato)

frei

Handwritten musical score for the second system. The treble clef staff has a key signature of one sharp (F#) and a common time signature (C). The bass clef staff is labeled "Pedal (ff)". The melodic line in the treble staff consists of several measures with notes and accidentals, including a large slur over the final measures. The word "robato" is written above the staff, and "frei" is written below it.

sehr ruhig

Handwritten musical score for the third system. The treble clef staff has a key signature of one sharp (F#) and a common time signature (C). The bass clef staff is labeled "p" and contains a series of notes on a single pitch. The melodic line in the treble staff consists of several measures with notes and accidentals, including a large slur over the final measures. The word "poco rit" is written in the treble staff. The system ends with a double bar line and a circled number 6 and 8.

(frei) (legg.)

9

(frei) rubato (rit - daur)

ff accel. →

Handwritten musical notation for the first system, featuring a treble clef and a bass clef. The bass clef staff contains notes with accents and a slur, with the word "nach" written above it.

Handwritten musical notation for the second system, featuring a treble clef and a bass clef. The bass clef staff contains notes with flats and a slur, with the word "mit + dem" written below it.

Handwritten musical notation for the third system, featuring a treble clef and a bass clef. The bass clef staff contains notes with accents and a slur, with a circled number "10" written above it.

P.C.
al

(ret - dim) frei

Handwritten musical score for the first system. The top staff is in treble clef and contains several notes with dynamics: *pp*, *pp*, *pp*, and *pp*. Above the notes are slurs and accents. The word "VIBR." is written above the final note. Below the staff is a piano diagram showing a keyboard with several keys marked with dots and arrows, and a small circle below it. The word "Pedal" is written to the left of the diagram.

Handwritten musical score for the second system. The top staff is in treble clef and contains notes with dynamics: *pp*, *pp*, *pp*, and *pp*. Above the notes are slurs and accents. The word "VIBR." is written above the final note. Below the staff is a piano diagram showing a keyboard with several keys marked with dots and arrows, and a small circle below it. The word "Pedal" is written to the left of the diagram. A large bracketed section is drawn over the piano diagram and extends to the right, covering the right side of the system.

Tail [3]

solo nastro (t) Presto

19

28

Flute

PIANO

Bass

Schlagz

This system contains four staves. The Flute staff has a whole rest. The Piano staff begins with a piano (p) dynamic and a half note chord, followed by a series of chords and notes with accents. The Bass staff has a whole note chord followed by quarter notes. The Schlagz staff has a whole note chord followed by a rhythmic pattern of eighth notes.

solo solistischer

This system continues the piece. The Flute staff has a melodic line with a slur and accents. The Piano staff has chords with accents. The Bass staff has quarter notes with accents. The Schlagz staff has a rhythmic pattern of eighth notes.

Handwritten musical score for the first system. It consists of a grand staff with a treble clef on the left. The score is divided into five measures. The first measure contains a treble clef, a key signature of one sharp (F#), and a note on the first line. The second measure contains a treble clef, a key signature of one sharp, and a note on the second line. The third measure contains a treble clef, a key signature of one sharp, and a note on the second line. The fourth measure contains a treble clef, a key signature of one sharp, and a note on the second line. The fifth measure contains a treble clef, a key signature of one sharp, and a note on the second line. The bass staff contains various notes and rests, including a note on the first line in the first measure and a note on the first line in the second measure. The grand staff is connected by a brace on the left. There are various musical notations, including notes, rests, and dynamic markings like 'p' and 'f'.

Handwritten musical score for the second system. It consists of a grand staff with a treble clef on the left. The score is divided into five measures. The first measure contains a treble clef, a key signature of one sharp (F#), and a note on the first line. The second measure contains a treble clef, a key signature of one sharp, and a note on the first line. The third measure contains a treble clef, a key signature of one sharp, and a note on the first line. The fourth measure contains a treble clef, a key signature of one sharp, and a note on the first line. The fifth measure contains a treble clef, a key signature of one sharp, and a note on the first line. The bass staff contains various notes and rests, including a note on the first line in the first measure and a note on the first line in the second measure. The grand staff is connected by a brace on the left. There are various musical notations, including notes, rests, and dynamic markings like 'p' and 'f'.

② 10 29

Handwritten musical score for the first system. It features a treble clef and a key signature of one sharp (F#). The notation includes a melodic line with eighth and sixteenth notes, and a bass line with chords and rhythmic markings. A circled 'P' is present in the first measure of the treble staff. Above the staff, there are circled numbers 2, 10, and 29, and a circled 'P' with an upward-pointing arrow. The system concludes with a double bar line.

Handwritten musical score for the second system. It features a treble clef and a key signature of one sharp (F#). The notation includes a melodic line with eighth and sixteenth notes, and a bass line with chords and rhythmic markings. The system concludes with a double bar line.

Handwritten musical score for the first system. The notation is on a grand staff with a treble clef on the upper staff and a bass clef on the lower staff. The key signature is one sharp (F#). The first measure contains a melodic line in the treble clef starting on G4, moving up to A4, B4, C5, and then down to B4, A4, G4. The bass clef has notes B2, C3, D3, E3. The second measure continues the treble line with G4, F#4, E4, D4, C4, B3, A3, G3. The bass clef has notes B2, C3, D3, E3, F#3, G3. The third measure shows the treble line with G4, F#4, E4, D4, C4, B3, A3, G3. The bass clef has notes B2, C3, D3, E3, F#3, G3. There are some additional markings like a circled 'f' and a circled 'p'.

Handwritten musical score for the second system. The notation is on a grand staff with a treble clef on the upper staff and a bass clef on the lower staff. The key signature is one flat (Bb). The first measure contains a melodic line in the treble clef starting on G4, moving up to A4, B4, C5, and then down to B4, A4, G4. The bass clef has notes B2, C3, D3, E3. The second measure continues the treble line with G4, F#4, E4, D4, C4, B3, A3, G3. The bass clef has notes B2, C3, D3, E3, F#3, G3. The third measure shows the treble line with G4, F#4, E4, D4, C4, B3, A3, G3. The bass clef has notes B2, C3, D3, E3, F#3, G3. The fourth measure shows the treble line with G4, F#4, E4, D4, C4, B3, A3, G3. The bass clef has notes B2, C3, D3, E3, F#3, G3. There are some additional markings like a circled 'ff' and a circled 'p'.

(3) (11) (30)

Handwritten musical score for the first system, measures 3, 11, and 30. The score is written on a grand staff with treble and bass clefs. The piano part includes chords and dynamics such as ff and $\hat{}$. The guitar part includes fret numbers and a circled measure 11.

(4) (12) (31)

Handwritten musical score for the second system, measures 4, 12, and 31. The score is written on a grand staff with treble and bass clefs. The piano part includes a 'Solo' marking and dynamics such as ff and p . The guitar part includes a circled measure 31.

Handwritten musical score for the first system. It consists of four staves. The top two staves are for the piano, with notes and rests. The third staff is for the violin, showing a melodic line with slurs and accents. The bottom staff is for the bass, with rhythmic notation. There are several circled 'p' symbols indicating piano dynamics. The music is in a key with one sharp (F#) and a common time signature.

Handwritten musical score for the second system, continuing from the first. It also consists of four staves. The piano part continues with complex rhythmic patterns and slurs. The violin part features a series of sixteenth-note runs in the second and third measures. The bass part continues with rhythmic notation. There are several circled 'p' symbols and dynamic markings like 'f' (forte) and 'p' (piano). The notation includes many slurs and accents.

Handwritten musical score for the first system, featuring a grand staff with five staves. The top staff has a melodic line with slurs and accents. The second and third staves have chords with accents. The fourth staff has a bass line with slurs. The bottom staff has rhythmic notation.

Handwritten musical score for the second system, featuring a grand staff with five staves. The top staff has a melodic line with slurs and accents. The second and third staves have chords with slurs and accents. The fourth staff has a bass line with slurs. The bottom staff has rhythmic notation. Circled numbers 5, 13, and 32 are on the right side.

Handwritten musical score for the first system. It consists of three staves: Violin (top), Piano (middle), and Bass (bottom). The key signature is one sharp (F#) and the time signature is 4/4. The score includes various musical notations such as notes, rests, and dynamic markings. A circled '34' is written in the left margin. A 'Solo' marking is present in the bass staff. A boxed-in section is visible in the bottom right of the system.

Handwritten musical score for the second system, continuing the three staves from the first system. It includes similar musical notations and a 'Solo' marking in the bass staff. A boxed-in section is visible in the bottom right of the system.

6
14
33

Handwritten musical score for measures 6-14. The score is written on a grand staff with piano (p), mezzo-forte (mf), and forte (f) dynamics. The notation includes notes, rests, and slurs. A 'Solo' marking is present in the lower right of the system.



Handwritten musical score for measures 15-33. The score is written on a grand staff with piano (p), mezzo-forte (mf), and forte (ff) dynamics. The notation includes notes, rests, and slurs. A 'dim' (diminuendo) marking is present in the lower right of the system.

7
15
34

8

1.

Solo

8

P

P

16

2.

Solo

16

P

P

dim rit

Mod.

Handwritten musical score for the first system, measures 1-3. The score is written on five staves. The top staff is a treble clef with a key signature of one sharp (F#) and a 4/4 time signature. The second staff is a bass clef. The third staff is a treble clef. The fourth staff is a bass clef. The fifth staff is a bass clef. The music features various notes, rests, and dynamic markings such as *p* and *pp*. There are also some handwritten annotations and symbols, including a circled 'P' and a circled '4'.

(4)

Handwritten musical score for the second system, measures 4-6. The score is written on five staves. The top staff is a treble clef with a key signature of one sharp (F#) and a 4/4 time signature. The second staff is a bass clef. The third staff is a treble clef. The fourth staff is a bass clef. The fifth staff is a bass clef. The music features various notes, rests, and dynamic markings such as *p* and *pp*. There are also some handwritten annotations and symbols, including a circled 'P' and a circled '4'.

cresc.

Handwritten musical score system 1, consisting of five staves. The top staff has a treble clef and contains notes with stems and beams, including a triplet of eighth notes. The second and third staves are grouped by a brace on the left and contain complex chordal structures with various accidentals (sharps, flats, naturals) and accents (^). The fourth staff has a bass clef and contains a melodic line with eighth notes and a circled 'P' marking. The fifth staff has a bass clef and contains a rhythmic pattern of eighth notes with stems pointing up.

Handwritten musical score system 2, consisting of five staves. The top staff has a treble clef and contains a melodic line with eighth notes and various accidentals. The second and third staves are grouped by a brace on the left and contain complex chordal structures with various accidentals and accents (^). The fourth staff has a bass clef and contains a melodic line with eighth notes and a circled 'P' marking. The fifth staff has a bass clef and contains a rhythmic pattern of eighth notes with stems pointing up.

18

Handwritten musical score for measures 18-21. The score consists of four staves. The top staff has a treble clef and a key signature of one sharp (F#). It contains several measures of music with notes, rests, and dynamic markings such as *f* and *p*. The second staff has a bass clef and contains notes and rests. The third staff has a treble clef and contains notes and rests. The fourth staff has a bass clef and contains rhythmic notation with stems and beams. There are various annotations and markings throughout the score, including slurs and accents.

19

Handwritten musical score for measures 22-25. The score consists of four staves. The top staff has a treble clef and a key signature of one flat (Bb). It contains several measures of music with notes, rests, and dynamic markings such as *ff* and *p*. The second staff has a bass clef and contains notes and rests. The third staff has a treble clef and contains notes and rests. The fourth staff has a bass clef and contains rhythmic notation with stems and beams. There are various annotations and markings throughout the score, including slurs and accents.

Handwritten musical score for the first system, consisting of three measures. The notation includes a treble clef with a sharp sign (F#) and a circled '19'. The first measure features a complex chordal structure with notes marked with accents and slurs, and a circled '19'. The second and third measures continue the melodic and harmonic development with various note values and accidentals.

Handwritten musical score for the second system, also consisting of three measures. The notation includes a treble clef with a sharp sign (F#). The first measure shows a melodic line with accents and slurs, and a circled '19'. The second and third measures continue the melodic and harmonic development with various note values and accidentals. The bottom staff of the first measure includes dynamic markings 'ffp' and 'f'.

Handwritten musical score for the first system. It consists of four measures across four staves. The top staff is a piano part with chords and dynamics like mf and mfz . The second and third staves are violin parts with notes and slurs. The bottom staff is a bass line with notes and rests. The notation includes various accidentals, slurs, and dynamic markings.

(20)

Handwritten musical score for the second system, starting with a circled measure number (20). It features four staves. The top staff is a piano part with chords and dynamics like mf and mfz . The second and third staves are violin parts with notes and slurs. The bottom staff is a bass line with notes and rests. A 'Pedal' marking is present in the second measure of the violin part. The notation includes various accidentals, slurs, and dynamic markings.

Handwritten musical score for the first system. It consists of three staves: a grand staff (treble and bass clefs) and a piano part. The grand staff contains a melodic line with various ornaments and a bass line. The piano part features a rhythmic pattern with a '3' indicating a triplet. The system concludes with a fermata and the instruction 'Pedal aus'.

Handwritten musical score for the second system. It continues the piece with similar notation. The grand staff has a melodic line with a 'ff' dynamic marking and a 'Pedal' instruction. The piano part includes a triplet marked with a '3'. The system ends with a fermata and the instruction 'Pedal aus'.

21

Handwritten musical score for system 21. The score is written on five staves. The top staff is in treble clef with a key signature of one flat. The second and third staves are grouped with a brace and have a common time signature. The fourth and fifth staves are grouped with a brace and have a common time signature. The score includes various musical notations such as notes, rests, and dynamic markings like 'ffp'.

l'poco rit...

22

Handwritten musical score for system 22. The score is written on five staves. The top staff is in treble clef with a key signature of one flat. The second and third staves are grouped with a brace and have a common time signature. The fourth and fifth staves are grouped with a brace and have a common time signature. The score includes various musical notations such as notes, rests, and dynamic markings like 'ffp'.

(f) ←

Handwritten musical notation on a five-line staff. The notation includes various notes, rests, and dynamic markings. On the left side, there are vertical annotations: *C. 11*, *C. 0020*, *C. 000*, and *(freies Solo)*. A large bracket on the left groups the lower part of the staff. In the center, there is a vertical line with a curved end at the bottom. To the right of this line, the text *(freies Solo)* is written, followed by *fff* and *>*. Further right, the text *(Zinken 1-1/2 Min.)* is written above the staff, and *rit + dim bis vpp* is written below it.

Handwritten musical notation on a five-line staff. On the left side, there is a box containing the text *G.P.*. Below the staff, the text *freies Solo (ad lib.)* is written. To the right, there is a musical phrase with notes and dynamic markings: *acc. rit* above the notes, and *f* below. The notes include a sharp sign (*#*) and a flat sign (*b*). Below the staff, there are some symbols: a circled *P*, a double bar line, and a circled *f*.

Brass Solo!

4 f = awal.

Phento

wieder ruhig (frei)

Flöte (frei) ruhig (ALTI Flöte - gründlich mitmachen - mit Haltpersonal)

rit - dim

sehr langsam

Handwritten musical score for the first system, featuring three staves: Violin (Vcll.), Piano (PIANO), and Bass (Bass). The music is in 4/4 time and includes various musical notations such as notes, rests, and dynamics.

Handwritten musical score for the second system, featuring three staves: Violin (Vcll.), Piano (PIANO), and Bass (Bass). The music continues with complex notation, including slurs and dynamic markings.

Handwritten musical score for the first system, featuring four staves. The top staff is marked with a treble clef and a key signature of one flat. The second staff includes the instruction "Pedal (P) =". The third staff is marked "Solo" and contains a series of rhythmic patterns. The bottom staff includes the instruction "Pedal (P)".

(2te* poco più...)

26


27

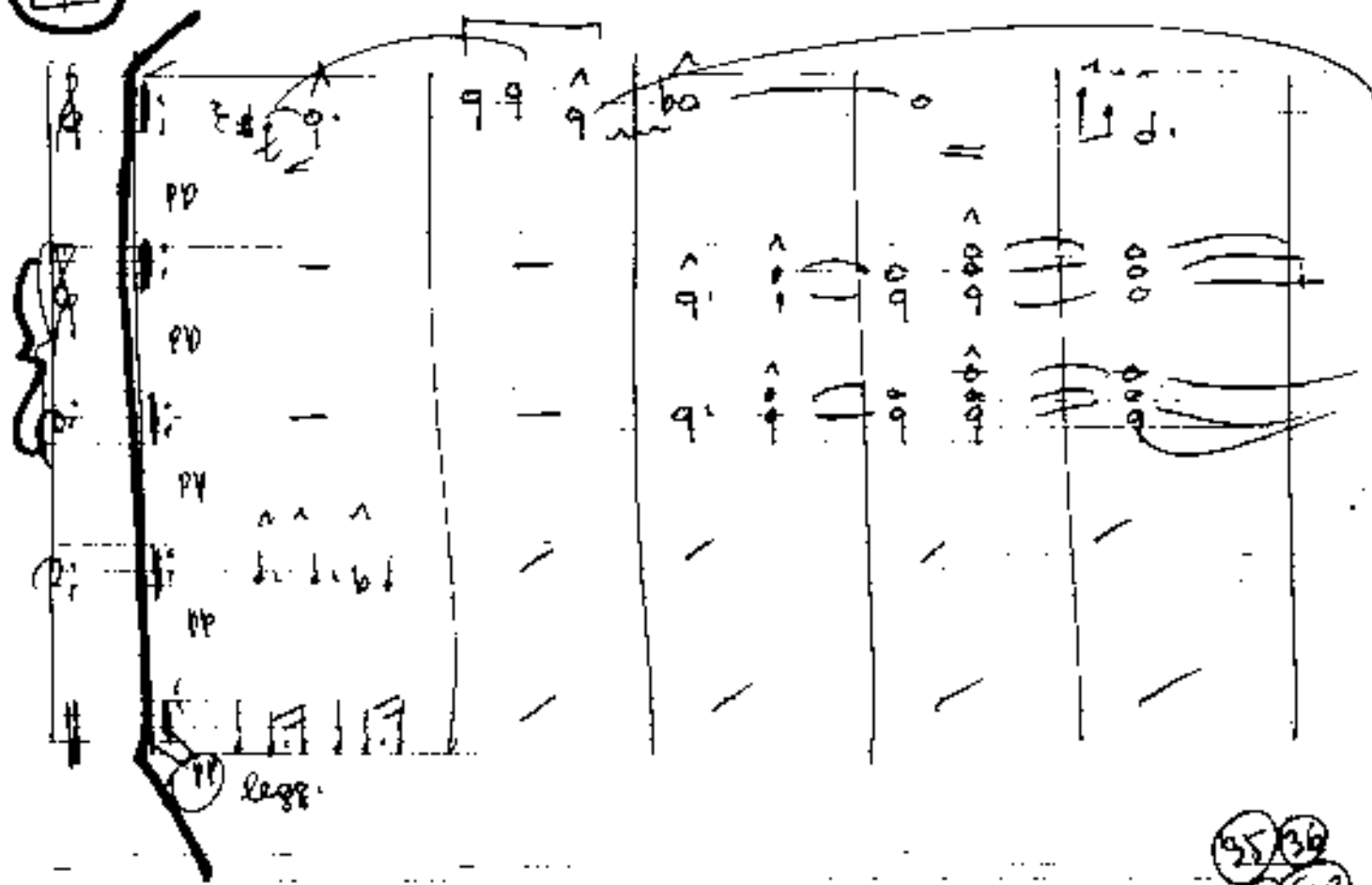
Handwritten musical score for the second system, featuring four staves. The top staff begins with a circled "P". The second staff includes the instruction "Pedal". The bottom staff includes the instruction "Pedal (P)".

(2te* allacca)

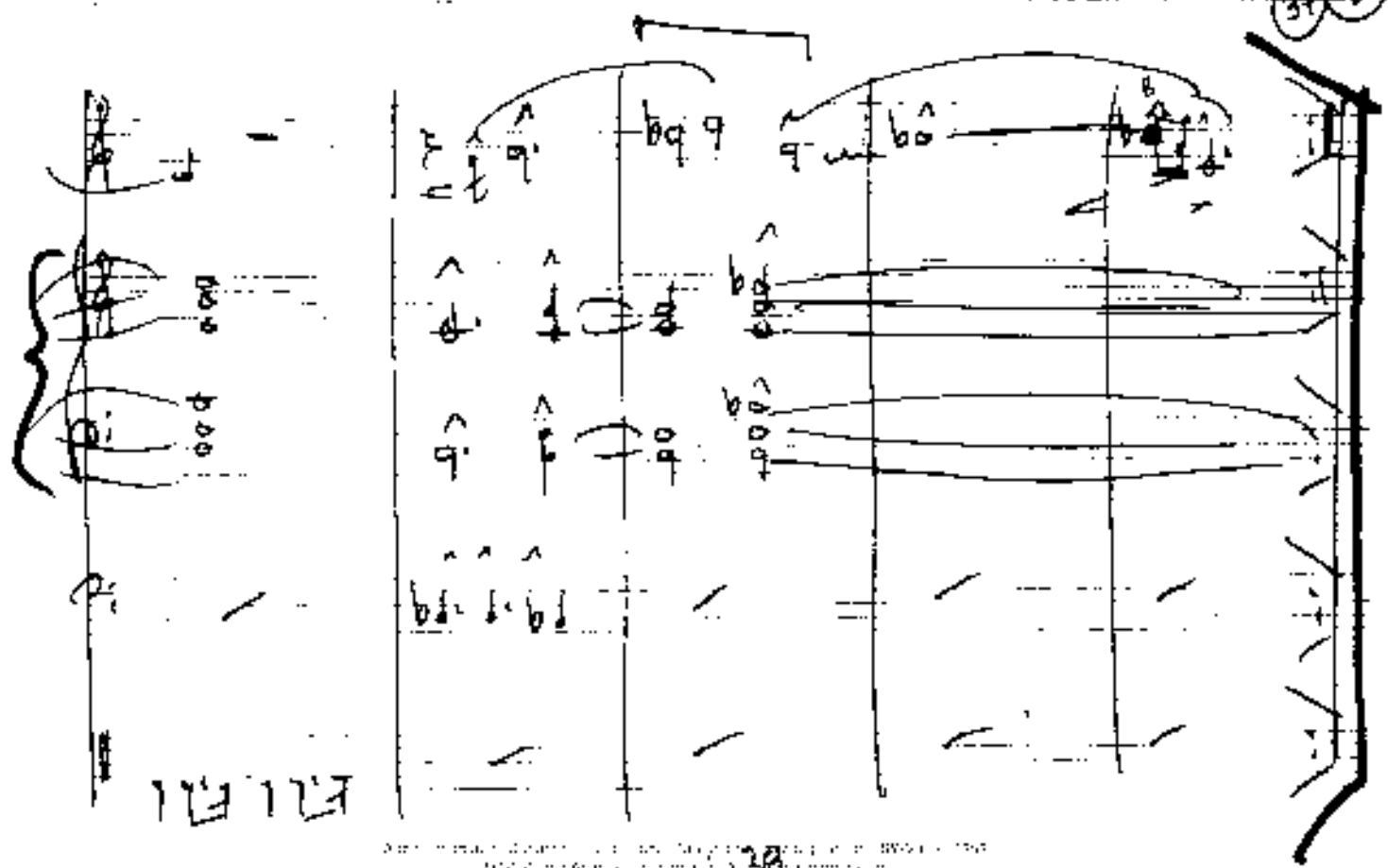
Teil 3 | al coda

giants (Flöte - wechselnd)


 0000 (ohne rit) 3x wiederholen (also Block 4+)



35 36
 37 38



Handwritten musical score for page 39. The score is written on a grand staff (treble and bass clefs). The first system includes dynamics *pp* and *fp*, and a *2b* marking. The second system has a *0* marking. The third system has a *9* marking. The score concludes with a double bar line.

Handwritten musical score for page 40. The score is written on a grand staff. The first system includes a *Solo* marking and a circled *3*. The second system has a circled *3*. The third system has a circled *3*. The fourth system has a circled *3*. The fifth system has a circled *3*. The sixth system has a circled *3*. The seventh system has a circled *3*. The eighth system has a circled *3*. The score concludes with a double bar line.