

7 Teile über eine
Tonfolge für
große Orgel
1969

Notenheft *Adolf Scherke*

7 Teile über eine

Tonfolge

für große Orgel

1969

Adolf Scherbaum

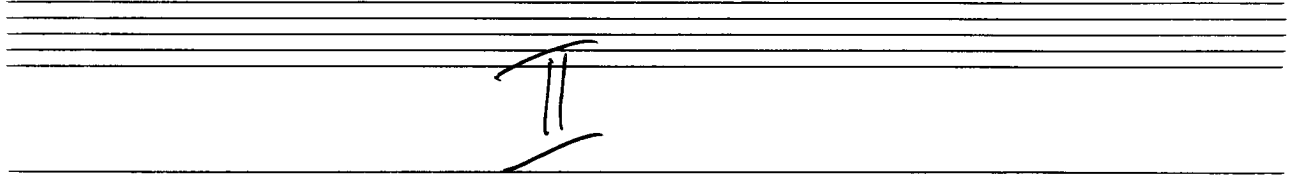
I

langsam

Handwritten musical notation for the first system, measures 1-2. The music is written on two staves (treble and bass clef). The first measure contains a melodic line in the treble clef starting with a sharp sign, and a bass clef line with a circled 'p' and a sharp sign. The second measure continues the melodic line in the treble clef and features two chords in the bass clef: a G major chord and an F# major chord.

Handwritten musical notation for the second system, measures 3-4. The music is written on two staves. The first measure continues the melodic line in the treble clef, and the bass clef line has two chords: a G major chord and an F# major chord. The second measure continues the melodic line in the treble clef, and the bass clef line has two chords: a G major chord and an F# major chord.

Handwritten musical notation for the third system, measures 5-6. The music is written on two staves. The first measure continues the melodic line in the treble clef, and the bass clef line has two chords: a G major chord and an F# major chord. The second measure continues the melodic line in the treble clef, and the bass clef line has two chords: a G major chord and an F# major chord.



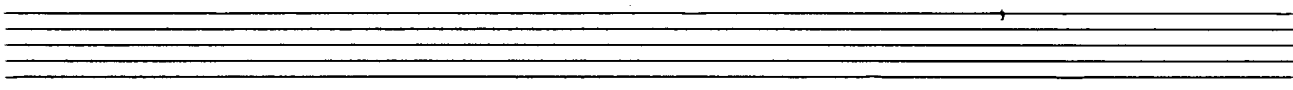
II

breit

Handwritten musical notation for the first system. It consists of two staves. The upper staff is in treble clef and the lower in bass clef. The music is in 4/4 time. The first measure contains a circled number '77'. The notation includes various notes, rests, and accidentals. To the right of the staves, there are handwritten rhythmic patterns: $C \ 0 \ 0 \ 0$ and $\# \ 0 \ 0 \ 0$.

Handwritten musical notation for the second system. It consists of two staves. The upper staff is in treble clef and the lower in bass clef. The music continues from the first system. To the right of the staves, there are handwritten rhythmic patterns: $C \ 0 \ 1 \ 0 \ 0$ and $C \ 0 \ 0 \ 1 \ 0$. A circled word 'FINE' is written at the end of the system.

Handwritten musical notation for the third system. It consists of two staves. The upper staff is in treble clef and the lower in bass clef. The music continues from the second system. The first measure contains a circled number '77'. The notation includes various notes, rests, and accidentals. To the right of the staves, there are handwritten rhythmic patterns: $C \ 0 \ 0 \ 0 \ 0$ and $\# \ 0 \ 0 \ 0 \ 0$.



Handwritten musical score for organ, consisting of three systems of staves. The first system includes a circled 'P' dynamic marking. The second system has a circled '1' marking. The third system has a circled '2' marking. The notation includes various notes, rests, and accidentals, with some notes beamed together. The piece concludes with the instruction '2. + Pr.C. al Fine'.

III, (1+p) 2+77)

3+pp (4+77)

Allegro con brio

so rasch als möglich

Handwritten musical notation for the first system. The treble clef contains sixteenth-note runs in three measures, while the bass clef features sustained notes with slurs.

Handwritten musical notation for the second system. The treble clef continues with sixteenth-note runs, and the bass clef has sustained notes with slurs.

Handwritten musical notation for the third system. The treble clef shows a change in key signature and more complex rhythmic patterns. The bass clef has sustained notes with slurs.

4+

Handwritten musical notation for the fourth system, concluding with a double bar line and a flourish.

ritate + rit

IV

breit

Handwritten musical score for the first system, measures 1-2. The system consists of three staves: a treble clef staff, a grand staff (two staves), and a bass clef staff. The treble staff begins with a treble clef, a 6/4 time signature, and a key signature of one sharp (F#). The notes are: F#4 (quarter), G4 (quarter), F#4 (quarter), G4 (quarter), F#4 (quarter), G4 (quarter), and F#4 (quarter). A slur covers the first six notes. The grand staff contains two staves with notes and accidentals. The left hand (bottom staff) has a circled 'H' above the first measure and notes F#3 and G3. The right hand (top staff) has a circled '77' above the first measure and notes F#4 and G4. The bass staff has notes F#3 and G3. The second measure continues the melodic line in the treble staff and has notes F#4 and G4 in the grand staff and F#3 and G3 in the bass staff.

Handwritten musical score for the second system, measures 3-4. The system consists of three staves: a treble clef staff, a grand staff (two staves), and a bass clef staff. The treble staff begins with a treble clef and a key signature of one sharp (F#). The notes are: F#4 (quarter), G4 (quarter), F#4 (quarter), G4 (quarter), F#4 (quarter), G4 (quarter), and F#4 (quarter). A slur covers the first six notes. The grand staff contains two staves with notes and accidentals. The left hand (bottom staff) has notes F#3 and G3. The right hand (top staff) has notes F#4 and G4. The bass staff has notes F#3 and G3. The second measure continues the melodic line in the treble staff and has notes F#4 and G4 in the grand staff and F#3 and G3 in the bass staff.

Handwritten musical score for the first system. The treble clef staff contains a melodic line with notes: b^b , a , b , $\#c$, d , $\#e$, f , $\#g$, a , b . The piano accompaniment consists of chords: $\#c$ and $\#e$ in the first measure, b^b and b in the second, and $\#e$ and a in the third. The bass clef staff contains notes: b^b , a , b , $\#c$, d , $\#e$, f , $\#g$, a , b .

Handwritten musical score for the second system. The treble clef staff contains a melodic line with notes: $\#c$, d , e , f , $\#g$, a , b , $\#c$, d , e . The piano accompaniment consists of chords: $\#c$ and $\#e$ in the first measure, b^b and b in the second, and $\#e$ and a in the third. The bass clef staff contains notes: b^b , a , b , $\#c$, d , $\#e$, f , $\#g$, a , b .

(Zweiter Satz)

Handwritten musical score for the third system. The treble clef staff contains a melodic line with notes: b^b , a , b , $\#c$, d , $\#e$, f , $\#g$, a , b . The piano accompaniment consists of chords: $\#c$ and $\#e$ in the first measure, b^b and b in the second, and $\#e$ and a in the third. The bass clef staff contains notes: b^b , a , b , $\#c$, d , $\#e$, f , $\#g$, a , b .

V.

(3+)

Presto (auf 2 Schläge)

Handwritten musical score for the first system, featuring a grand staff with treble and bass clefs. The right hand has a treble clef and a key signature of one sharp (F#). The left hand has a bass clef and a key signature of one sharp (F#). The music consists of two measures. The first measure contains a series of eighth notes in the right hand and a single note in the left hand. The second measure contains a series of eighth notes in the right hand and a single note in the left hand. There are circled numbers 6 and 4 in the left hand, and a circled plus sign in the right hand. A circled plus sign is also present in the right hand of the second measure.

Handwritten musical score for the second system, featuring a grand staff with treble and bass clefs. The right hand has a treble clef and a key signature of one sharp (F#). The left hand has a bass clef and a key signature of one sharp (F#). The music consists of two measures. The first measure contains a series of eighth notes in the right hand and a single note in the left hand. The second measure contains a series of eighth notes in the right hand and a single note in the left hand.

Handwritten musical score for the first system. It consists of three staves. The top staff is in treble clef and contains a melodic line with eighth notes. The middle staff is in alto clef and contains a harmonic line with notes marked with sharps and flats. The bottom staff is in bass clef and contains a bass line with notes marked with sharps and flats. A large slur spans across all three staves.

Handwritten musical score for the second system. It consists of three staves. The top staff is in treble clef and contains a melodic line with eighth notes. The middle staff is in alto clef and contains a harmonic line with notes marked with sharps and flats. The bottom staff is in bass clef and contains a bass line with notes marked with sharps and flats. A large slur spans across all three staves.

Handwritten musical score for the third system. It consists of three staves. The top staff is in treble clef and contains a melodic line with eighth notes. The middle staff is in alto clef and contains a harmonic line with notes marked with sharps and flats. The bottom staff is in bass clef and contains a bass line with notes marked with sharps and flats. A large slur spans across all three staves. On the right side of the system, there is a circled number "34" and some handwritten annotations.

VI

Sehr ruhig (langsam)

lento (aber nicht schleppen!)

3/4 (pp)

Handwritten musical notation for the first system. The treble staff contains a melodic line with notes on G4, A4, B4, C5, D5, E5, and F#5. The bass staff contains a bass line with notes on G3, A3, B3, C4, D4, E4, and F#4. A large slur covers the entire system.

Handwritten musical notation for the second system. The treble staff continues with notes on G4, A4, B4, C5, D5, E5, and F#5. The bass staff continues with notes on G3, A3, B3, C4, D4, E4, and F#4. A large slur covers the entire system.

Handwritten musical notation for the third system. The treble staff contains notes on G4, A4, B4, C5, D5, E5, and F#5. The bass staff contains notes on G3, A3, B3, C4, D4, E4, and F#4. A large slur covers the entire system.

Handwritten musical notation for the fourth system. The treble staff contains notes on G4, A4, B4, C5, D5, E5, and F#5. The bass staff contains notes on G3, A3, B3, C4, D4, E4, and F#4. A large slur covers the entire system. The word "lunga" is written above the treble staff. A fermata is placed over the final note in the treble staff.

VIII

Allegro agitato

sempre legato

Handwritten musical score for the first system. It consists of three staves. The top staff is in treble clef with a 2/2 time signature. The middle staff is in bass clef with a circled '2' and 'pp' dynamic marking. The bottom staff is in bass clef. The music includes a series of eighth notes in the treble clef and a bass line with notes G, B, and G. A slur covers the first two measures, and another slur covers the last two measures. Dynamic markings include 'pp' in a circle, 'f', and '#f'.

Handwritten musical score for the second system, continuing from the first. It consists of three staves. The top staff is in treble clef. The middle staff is in bass clef with a circled '2' and 'pp' dynamic marking. The bottom staff is in bass clef. The music continues with eighth notes in the treble clef and a bass line with notes G, B, and G. A slur covers the first two measures, and another slur covers the last two measures. Dynamic markings include 'pp' in a circle, 'f', and '#f'.

Handwritten musical score for the first system. It features a treble clef with a melodic line of eighth notes. The left hand has a bass clef with a bass line of half notes and a middle staff with chords. A circled 'p' indicates piano dynamics. A 'b' above the final measure of the treble staff indicates a flat.

Handwritten musical score for the second system. The treble clef continues with eighth notes. The left hand has a bass clef with a bass line of half notes and a middle staff with chords. A circled 'p' indicates piano dynamics.

Handwritten musical score for the third system. The treble clef continues with eighth notes. The left hand has a bass clef with a bass line of half notes and a middle staff with chords. A circled 'mp' indicates mezzo-piano dynamics.

Handwritten musical score for the first system. The top staff is in treble clef, showing a melodic line with eighth and sixteenth notes. The bottom two staves are in grand staff (treble and bass clefs), providing piano accompaniment with chords and bass notes. The time signature is 6/8. The key signature has one sharp (F#).

Handwritten musical score for the second system. It continues the melodic and accompanimental lines from the first system. The notation includes slurs, ties, and various accidentals. The time signature remains 6/8.

Handwritten musical score for the third system. The final system shows sustained chords in the piano part and a concluding melodic phrase in the treble part. The time signature is 6/8.

Handwritten musical score for the first system. It consists of three staves: a treble clef staff at the top, a middle staff with a C-clef, and a bass clef staff at the bottom. The music is written in a key with two sharps (F# and C#). The first measure shows a treble staff with a whole note chord (F#, C#, G#) and a middle staff with a melodic line starting on F# and moving up. The second measure continues the melodic line in the middle staff and has a whole note chord (F#, C#, G#) in the bass staff.

Handwritten musical score for the second system. It consists of three staves: a treble clef staff at the top, a middle staff with a C-clef, and a bass clef staff at the bottom. The music is written in a key with two flats (Bb and Eb). The first measure shows a treble staff with a whole note chord (Bb, Eb, Ab) and a middle staff with a melodic line starting on Bb and moving up. The second measure continues the melodic line in the middle staff and has a whole note chord (Bb, Eb, Ab) in the bass staff.

Handwritten musical score for the third system. It consists of three staves: a treble clef staff at the top, a middle staff with a C-clef, and a bass clef staff at the bottom. The music is written in a key with two flats (Bb and Eb). The first measure shows a treble staff with a whole note chord (Bb, Eb, Ab) and a middle staff with a melodic line starting on Bb and moving up. The second measure continues the melodic line in the middle staff and has a whole note chord (Bb, Eb, Ab) in the bass staff.

(immer breiter werden!

Handwritten musical score for the first system. It consists of three staves. The top staff is a treble clef with a key signature of one sharp (F#) and a 4/4 time signature. The middle and bottom staves are a grand staff (treble and bass clefs). The music is written in a simple, sketchy style with various notes, accidentals, and slurs. There are some annotations like '^' above notes and 'rit.' written in the middle of the system.

Handwritten musical score for the second system. It consists of three staves. The notation continues from the first system. There are several slurs and accents. A 'rit.' marking is present in the middle of the system. The bottom staff has some notes with '^' above them.

Lento (breit)

Handwritten musical score for the third system. It consists of three staves. The tempo marking 'Lento (breit)' is written at the beginning. The notation includes wide intervals and slurs. There are 'rit.' and 'Lunga.' markings. The bottom staff has some notes with '^' above them. The system ends with a double bar line and some scribbles.