

5 Impressionen
1970

für große Orgel

Solof Herbertmann

Notenheft



5 Impressionen

für große Orgel 1970

Adolf Scherbaum

Des Kreuzes Last drückt schwer —
ermattet sinkt er wieder —
Der Herr — der alle Welt erschuf —
regiert und hört —
Trägt unser Sünden Last —
auf seinen wunden Gliedern —
Des Kreuzes Last drückt schwer.

1

lento (siehe Anfang)

Handwritten musical notation for the first system. The top staff is in treble clef and the bottom staff is in bass clef. The time signature is 4/4. The dynamics are marked as *pp*. The melody in the treble clef consists of quarter notes with triplets: $\sharp C$, $\sharp D$, $\flat E$, G , A , $\sharp B$, $\sharp C$, $\flat D$. The bass line consists of sustained notes: $\sharp C$, $\flat E$, $\sharp G$, $\flat B$.

Handwritten musical notation for the second system. The treble clef melody continues with triplets: D , $\flat E$, $\sharp F$, G , $\flat A$, $\sharp B$, C . The bass line continues with $\sharp C$, $\flat E$, $\sharp G$, $\flat B$, C , $\sharp D$, $\flat E$.

Handwritten musical notation for the third system. The treble clef melody continues with $\sharp C$, $\flat D$, $\sharp E$, $\flat F$, G , $\flat A$, $\sharp B$, C . The bass line continues with $\sharp C$, $\flat E$, $\sharp G$, $\flat B$, C , $\sharp D$, $\flat E$.

Handwritten musical notation for the first system. The treble staff contains a melodic line with notes and accidentals (sharps and naturals). The bass staff contains a bass line with a triplet of eighth notes and other rhythmic markings.

Handwritten musical notation for the second system. The treble staff features a melodic line with a long note and a sharp. The bass staff has a complex bass line with a triplet and various accidentals.

Handwritten musical notation for the third system. The treble staff has a melodic line with a sharp and a natural. The bass staff includes a triplet and a double bar line.

Handwritten musical notation for the fourth system. The treble staff has a double bar line and a large bracketed section. The bass staff has a double bar line and a large bracketed section.

Bedeckt mit Blut und Schweiß
Ist unser Heilands Wange
Ein Schweißtuch - rein und weiß -
Reicht nun aus Liebesdrange
Wie weit den Heiland hin.
Er lohnt des Mitleid's Sinn -
Es läßt ihr voll Huld und mild -
Zurück sein göttlich Bild.

2

lento

Handwritten musical notation for the first system. The treble clef staff contains a melodic line with notes: G4 (sharp), A4 (sharp), B4 (flat), C5 (flat), D5, E5, F5 (sharp), G5 (sharp), A5, B5, C6, D6, E6, F6 (flat), G6, A6, B6, C7. The bass clef staff contains chords: G4-A4-B4 (sharp), G4-A4-B4 (sharp), G4-A4-B4 (sharp), G4-A4-B4 (sharp), G4-A4-B4 (sharp), G4-A4-B4 (sharp), G4-A4-B4 (sharp), G4-A4-B4 (sharp).

Handwritten musical notation for the second system. The treble clef staff contains notes: G4 (sharp), A4 (sharp), B4 (flat), C5 (flat), D5, E5, F5 (sharp), G5 (sharp), A5, B5, C6, D6, E6, F6 (flat), G6, A6, B6, C7. The bass clef staff contains chords: G4-A4-B4 (sharp), G4-A4-B4 (sharp), G4-A4-B4 (sharp), G4-A4-B4 (sharp), G4-A4-B4 (sharp), G4-A4-B4 (sharp), G4-A4-B4 (sharp), G4-A4-B4 (sharp).

Handwritten musical notation for the third system. The treble clef staff contains notes: G4 (sharp), A4 (sharp), B4 (flat), C5 (flat), D5, E5, F5 (sharp), G5 (sharp), A5, B5, C6, D6, E6, F6 (flat), G6, A6, B6, C7. The bass clef staff contains chords: G4-A4-B4 (sharp), G4-A4-B4 (sharp), G4-A4-B4 (sharp), G4-A4-B4 (sharp), G4-A4-B4 (sharp), G4-A4-B4 (sharp), G4-A4-B4 (sharp), G4-A4-B4 (sharp).

The image shows three systems of handwritten musical notation for organ. Each system consists of two staves. The first system has a circled word "FINE" above the right-hand staff. The second system includes a triplet of eighth notes in the right hand. The third system concludes with the instruction "2. x D. C. al. Fine" written vertically on the right side.

Die Last drückt mehr und mehr -
Es zittern seine Glieder -
Zum zweitemal sinkt er -
Auf's heil'ge Antlitz nieder -
Ob auch von Schmerz gebeugt -
Er stuldet still und schweigt.

3

breit

Handwritten musical notation for the first system. It consists of two staves: a treble clef staff and a bass clef staff. The treble staff begins with a treble clef, a key signature of one sharp (F#), and a common time signature (C). The first measure contains a whole note chord with notes G4, B4, and D5. The second measure contains a whole note chord with notes G4, Bb4, and D5. The third measure contains a whole note chord with notes G4, B4, and D5. The fourth measure contains a whole note chord with notes G4, B4, and D5. The bass staff begins with a bass clef and a key signature of one sharp (F#). The first measure contains a whole note chord with notes G3, B3, and D4. The second measure contains a whole note chord with notes G3, Bb3, and D4. The third measure contains a whole note chord with notes G3, B3, and D4. The fourth measure contains a whole note chord with notes G3, B3, and D4. There are slurs over the notes in the second and fourth measures of both staves.

Handwritten musical notation for the second system. It consists of two staves: a treble clef staff and a bass clef staff. The treble staff begins with a treble clef, a key signature of one sharp (F#), and a common time signature (C). The first measure contains a whole note chord with notes G4, B4, and D5. The second measure contains a whole note chord with notes G4, B4, and D5. The third measure contains a whole note chord with notes G4, B4, and D5. The fourth measure contains a whole note chord with notes G4, B4, and D5. The bass staff begins with a bass clef and a key signature of one sharp (F#). The first measure contains a whole note chord with notes G3, B3, and D4. The second measure contains a whole note chord with notes G3, B3, and D4. The third measure contains a whole note chord with notes G3, B3, and D4. The fourth measure contains a whole note chord with notes G3, B3, and D4. There are slurs over the notes in the second and fourth measures of both staves.

Handwritten musical notation for the third system. It consists of two staves: a treble clef staff and a bass clef staff. The treble staff begins with a treble clef, a key signature of one sharp (F#), and a common time signature (C). The first measure contains a whole note chord with notes G4, B4, and D5. The second measure contains a whole note chord with notes G4, B4, and D5. The third measure contains a whole note chord with notes G4, B4, and D5. The fourth measure contains a whole note chord with notes G4, B4, and D5. The bass staff begins with a bass clef and a key signature of one sharp (F#). The first measure contains a whole note chord with notes G3, B3, and D4. The second measure contains a whole note chord with notes G3, B3, and D4. The third measure contains a whole note chord with notes G3, B3, and D4. The fourth measure contains a whole note chord with notes G3, B3, and D4. There are slurs over the notes in the second and fourth measures of both staves.

Handwritten musical notation for the first system. The treble clef staff contains three measures of music with notes and accidentals. The bass clef staff contains a melodic line with notes, accidentals, and slurs. There are dynamic markings 'p.' and 'p.' below the bass staff. Above the treble staff, there are handwritten annotations: $\frac{0}{\#} \frac{0}{\#}$, $\frac{0}{\flat} \frac{0}{\flat}$, and $\frac{0}{\#}$.

Handwritten musical notation for the second system. The treble clef staff contains three measures of music. The bass clef staff contains a melodic line with notes, accidentals, and slurs. There are dynamic markings 'p.' and 'p.' below the bass staff. Above the treble staff, there are handwritten annotations: $\frac{0}{\#}$, $\frac{0}{\#}$, and $\frac{0}{\#}$.

Handwritten musical notation for the third system. The treble clef staff contains three measures of music. The bass clef staff contains a melodic line with notes, accidentals, and slurs. There are dynamic markings 'p.' and 'p.' below the bass staff. Above the treble staff, there are handwritten annotations: $\frac{0}{\#}$, $\frac{0}{\flat}$, and $\frac{0}{\#}$. The system ends with a double bar line and a fermata. Below the bass staff, there is a handwritten note: "quit.....".

Lich — zwischen Höreken schwebt —
Der Heiland voller Wunden —
Noch atmet er und lebt —
Drei wundervolle Stunden —
Jetzt ruft er aus der Nacht —
Ruft laut: ES IST VOLLBRACHT!!
Und neigt sein Haupt und stirbt. —

4

Marsch Funerale

(tempo cresc...)

so langsam als möglich

Handwritten musical notation for the first system. It consists of two staves. The upper staff is in treble clef with a circled '4' indicating the time signature. It contains five measures of music, each with a circled note and a slur above it. The lower staff is in bass clef with a circled '4' and a circled 'pp' dynamic marking. It contains five measures of music, each with a circled note and a slur below it. The notes in both staves are: G#4, A#4, B4, C5, D5.

Handwritten musical notation for the second system. It consists of two staves. The upper staff is in treble clef and contains five measures of music, each with a circled note and a slur above it. The lower staff is in bass clef and contains five measures of music, each with a circled note and a slur below it. The notes in both staves are: G#4, A#4, B4, C5, D5.

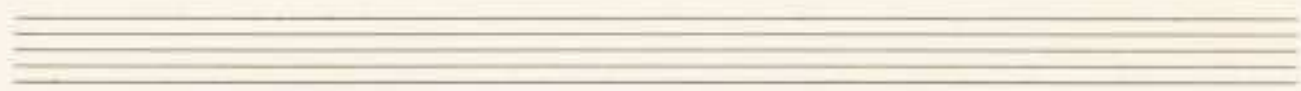
Handwritten musical notation for the third system. It consists of two staves. The upper staff is in treble clef and contains five measures of music, each with a circled note and a slur above it. The lower staff is in bass clef with a circled 'pp' dynamic marking and contains five measures of music, each with a circled note and a slur below it. The notes in both staves are: G#4, A#4, B4, C5, D5.

Handwritten musical score for the first system. The treble clef part consists of five measures of music, each containing a half note with a slur above it. The notes are G#4, A4, B4, C5, and D5. The bass clef part consists of five measures of music, each containing a half note with a slur below it. The notes are G3, F#3, E3, D3, and C3. A circled 'p' is written in the first measure of the treble staff.

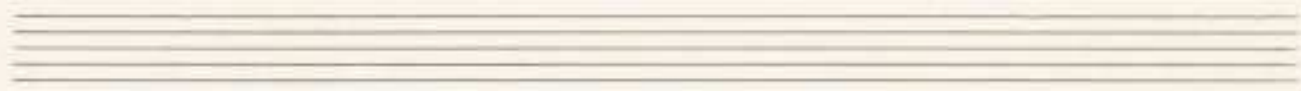
Handwritten musical score for the second system. The treble clef part consists of five measures of music, each containing a half note with a slur above it. The notes are G4, F#4, E4, D4, and C4. The bass clef part consists of five measures of music, each containing a half note with a slur below it. The notes are G#3, F#3, E3, D3, and C3. A circled 'f' is written in the first measure of the treble staff.

Handwritten musical score for the third system. The treble clef part consists of five measures of music, each containing a half note with a slur above it. The notes are G4, F#4, E4, D4, and C4. The bass clef part consists of five measures of music, each containing a half note with a slur below it. The notes are G#3, F#3, E3, D3, and C3. A circled 'f' is written in the first measure of the treble staff.

Handwritten musical score for the fourth system. The treble clef part consists of five measures of music, each containing a half note with a slur above it. The notes are G#4, A4, B4, C5, and D5. The bass clef part consists of five measures of music, each containing a half note with a slur below it. The notes are G3, F#3, E3, D3, and C3. A circled 'f' is written in the first measure of the treble staff.



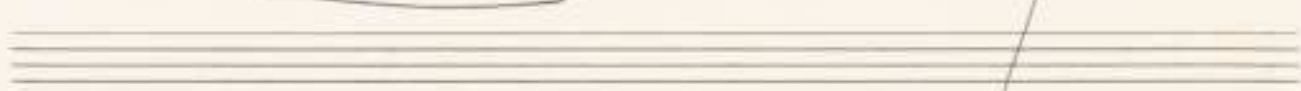
Handwritten musical notation for the first system. The right hand (treble clef) contains a sequence of notes: G#4, A4, B4, C5, D5, E5, F#5, G#5, A5, B5, C6. The left hand (bass clef) contains a sequence of notes: G3, F#3, E3, D3, C3, B2, A2, G2, F#2, E2, D2, C2. A circled key signature of two sharps (F# and C#) is written at the beginning of the system.



Handwritten musical notation for the second system. The right hand (treble clef) contains notes: G#4, A4, B4, C5, D5, E5, F#5, G#5, A5, B5, C6. The left hand (bass clef) contains notes: G3, F#3, E3, D3, C3, B2, A2, G2, F#2, E2, D2, C2. A circled key signature of one sharp (F#) is written at the beginning. The text "so. ritardando" is written in the middle of the system.



Handwritten musical notation for the third system. The right hand (treble clef) contains notes: G#4, A4, B4, C5, D5, E5, F#5, G#5, A5, B5, C6. The left hand (bass clef) contains notes: G3, F#3, E3, D3, C3, B2, A2, G2, F#2, E2, D2, C2. A circled key signature of one sharp (F#) is written at the beginning. The system ends with a double bar line and a fermata.



Der alles überwand -
Ruh' jetzt in Felsengrab -
Gesalbt von Fremder Hand -
Um das Leben uns zu geben -
Opferte Jesus sein Leben -
Und vergoß am Kreuz sein Blut -

5

solos ruhig -

Handwritten musical notation for the first system, measures 1-3. The system consists of two staves: a treble clef staff and a bass clef staff. The treble staff has a 4/4 time signature and a circled 'p' dynamic marking. The notes are: measure 1: D4 (sharp), D4 (sharp); measure 2: B3 (flat), D4; measure 3: D4, D4. The bass staff contains a complex accompaniment with many accidentals and slurs.

Handwritten musical notation for the second system, measures 4-6. The treble staff notes are: measure 4: D4 (sharp), D4 (sharp); measure 5: B3 (flat), D4; measure 6: B3 (flat), D4. The bass staff continues the accompaniment with slurs and accidentals.

Handwritten musical notation for the third system, measures 7-9. The treble staff notes are: measure 7: D4 (sharp), D4; measure 8: D4 (sharp), D4; measure 9: B3 (flat), D4. The bass staff continues the accompaniment with slurs and accidentals.

Handwritten musical notation for the first system. The treble clef staff contains a melodic line with notes d , b , $\sharp d$, b , $\sharp d$ across three measures. The bass clef staff contains a corresponding accompaniment with notes $\sharp f$, $\sharp f$, b , $\sharp f$ in the first measure, and similar patterns in the second and third measures. A long slur covers the entire system.

Handwritten musical notation for the second system. The treble clef staff contains notes d , b , $\sharp d$, b , $\sharp d$ across three measures. The bass clef staff contains notes b , $\sharp f$, $\sharp f$, b in the first measure, and similar patterns in the second and third measures. A long slur covers the entire system.

Handwritten musical notation for the third system. The treble clef staff contains notes b , d , d , $\sharp d$, $\sharp d$ across three measures. The bass clef staff contains notes b , $\sharp f$, $\sharp f$, b in the first measure, and similar patterns in the second and third measures. A long slur covers the entire system.

Handwritten musical notation for the fourth system. The treble clef staff contains chords $\sharp f$, $\sharp f$, $\sharp f$ in the first measure, $\sharp f$, $\sharp f$ in the second, and $\sharp f$, $\sharp f$, $\sharp f$ in the third. The bass clef staff contains notes b , $\sharp f$, $\sharp f$ in the first measure, $\sharp d$ in the second, and $\sharp f$, $\sharp f$ in the third. A long slur covers the entire system. The text "lange halten." is written above the final measure.

Leaves out: - - - 17

1970 Schreier