

KONZERT in 3 Teilen

für Flöte

(hohes) HORN in F (im Partitur  
Am C + F und hoch)

VIBRAPHON

BASS

1970

Adolf Scherbaum

Notenheft



Rosa

Flöte



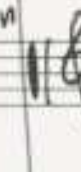
Handwritten musical notation for the Flute part, featuring a melodic line with slurs and accents over four measures. A circled '1' is at the end of the first measure.

Hohes Horn  
in C  
natural



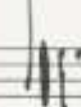
Handwritten musical notation for the High Horn part, consisting of a single measure with a fermata and a dynamic marking of *sf*.

Vibraphon



Handwritten musical notation for the Vibraphone part, featuring a melodic line with slurs and a circled *sf* dynamic marking.

Bass  
Solo



Handwritten musical notation for the Bass Solo part, featuring a melodic line with slurs and a circled *sf* dynamic marking.

*pizz*  
*ff*

Handwritten musical notation for the second system, including staves for Flute, High Horn, Vibraphone, and Bass Solo. The notation is more complex, with many accidentals and slurs. A circled '2' is at the end of the first measure.

Handwritten musical score for the first system, measures 1-4. The score is written for Violin I, Violin II, Viola, and Cello/Double Bass. The key signature is G major (one sharp) and the time signature is 3/4. The first measure starts with a forte dynamic marking. The notation includes various chords, melodic lines with slurs, and a circled '3' at the end of the fourth measure.

Handwritten musical score for the second system, measures 5-8. The notation continues from the first system. It features more complex melodic lines with slurs and ties, and dynamic markings such as accents and 'p' (piano). The system concludes with a circled '4' at the end of the eighth measure.

5

Handwritten musical score for system 5, measures 1-4. The system consists of four staves: Violin I, Violin II, Viola, and Cello/Double Bass. The music includes various notes, rests, and dynamic markings like 'p'. There are also some circled 'p' markings in the lower staves.

6

Handwritten musical score for system 6, measures 1-4. The system consists of four staves: Violin I, Violin II, Viola, and Cello/Double Bass. The music includes various notes, rests, and dynamic markings like 'f'. There are also some circled 'f' markings in the lower staves.

Handwritten musical score for the first system, consisting of four staves. The notation includes triplets, slurs, and dynamic markings such as  $\text{p}$  and  $\text{over}$ . The first staff has a circled  $\text{p}$  marking. The second staff has a circled  $\text{p}$  marking. The third staff has a circled  $\text{p}$  marking. The fourth staff has a circled  $\text{p}$  marking and the word "over" written below it.

Handwritten musical score for the second system, consisting of four staves. The notation includes slurs, accents, and dynamic markings such as  $>$  and  $\text{dim}$ . The word "dim" is written above the second staff. The third staff has a circled  $\text{p}$  marking. The fourth staff has a circled  $\text{p}$  marking.

dir > af >

p

pp

pp

pp

8

p

p

p

p

9

Handwritten musical score for measures 10-11. The score consists of four staves. The top two staves are in treble clef, and the bottom two are in bass clef. The music includes various notes, rests, and dynamic markings such as *mf* and *f*. A large bracket spans across the middle two staves.

Handwritten musical score for measures 12-13. The score consists of four staves. The top two staves are in treble clef, and the bottom two are in bass clef. The music includes notes, rests, and dynamic markings such as *pp* and *f*. A large bracket spans across the middle two staves.

Handwritten musical score for measures 14-15. The score consists of two staves: **VIBR** (Vibraphone) in treble clef and **BASS** in bass clef. The music includes notes, rests, and dynamic markings such as *mf* and *f*. A large bracket spans across both staves.

Handwritten musical score for the first system, measures 1-4. The score is written on four staves: Treble, Alto, Bass, and Cello/Double Bass. The music is in D major. The first staff has a circled '4' and a circled '13'. The second staff has a circled '4'. The third staff has a circled '4'. The fourth staff has a circled '4' and a circled 'arco'.

Handwritten musical score for the second system, measures 5-8. The score is written on four staves: Treble, Alto, Bass, and Cello/Double Bass. The music is in D major. The first staff has a circled '4'. The second staff has a circled '4'. The third staff has a circled '4'. The fourth staff has a circled '4' and the text 'Pedal bis'.



Handwritten musical score for the first system, consisting of five staves. The notation includes various notes, rests, and accidentals (sharps and naturals). The top staff has a wavy line with a bracket above it. The second staff has a treble clef and a sharp sign. The third staff has a treble clef and a sharp sign. The fourth staff has a bass clef and a sharp sign. The bottom staff has a bass clef and a sharp sign.

Handwritten musical score for the second system, consisting of five staves. The notation includes notes, rests, and accidentals. A circled number '14' is written in the right margin, and 'D.C.' is written above it. The bottom staff has a sharp sign and a circled 'D.C.' marking. The notation is more complex, with many notes and accidentals.

Teil 2

15

Handwritten musical score for measures 14-15 and 16-17. The score is written on four staves. Measure 14 (circled) starts with a treble clef and a key signature of one sharp (F#). It contains a melody in the treble clef and a bass line in the bass clef. Dynamic markings include  $p$  and  $pp$ . Measure 15 (circled) continues the melody and bass line, with a dynamic marking of  $p$  and the instruction "(inc. notiert)" written above the staff. Measures 16 and 17 are empty staves.

16

Handwritten musical score for measures 18-19. The score is written on four staves. Measure 18 (circled) starts with a treble clef and a key signature of two sharps (F# and C#). It contains a melody in the treble clef and a bass line in the bass clef. Measure 19 (circled) continues the melody and bass line. The score ends with a double bar line.

16

Handwritten musical score for measures 16-19. The top staff (treble clef) features a melodic line with slurs and ties, marked with a circled *p*. The middle staff (alto clef) has a bass line with slurs and ties, marked with a circled *pp*. The bottom staff (bass clef) has a bass line with slurs and ties, marked with a circled *p*. Measure numbers 16, 17, 18, and 19 are circled at the end of each measure.

17

Handwritten musical score for measures 17-20. The top staff (treble clef) features a melodic line with slurs and ties, marked with a circled *f*. The middle staff (alto clef) has a bass line with slurs and ties, marked with a circled *f*. The bottom staff (bass clef) has a bass line with slurs and ties, marked with a circled *f*. Measure numbers 17, 18, 19, and 20 are circled at the end of each measure.

Handwritten musical score for measures 18 and 19. The score is written on four staves (treble and bass clefs). Measure 18 is circled in the top left corner. Measure 19 is circled in the top right corner. The music features complex rhythmic patterns and accidentals.

Handwritten musical score for measures 20 and 21. The score is written on four staves (treble and bass clefs). Measure 20 is circled in the top right corner. The music features complex rhythmic patterns and accidentals.

20

*sempre cresc... →*

21

pp (Pedal bis B)

pp 7

22

*sempre crescendo (bis 71)*

22

Handwritten musical score for measures 22-23. The score is written on four staves. The first staff is a treble clef with a key signature of one flat (B-flat). The second staff is a treble clef with a key signature of one flat. The third staff is a treble clef with a key signature of one flat. The fourth staff is a bass clef with a key signature of one flat. The notation includes various notes, rests, and dynamic markings such as *mf* and *f*. There are also some handwritten annotations like "Ped. bis B" and "b. + f".

23

Handwritten musical score for measures 24-25. The score is written on four staves. The first staff is a treble clef with a key signature of one flat. The second staff is a treble clef with a key signature of one flat. The third staff is a treble clef with a key signature of one flat. The fourth staff is a bass clef with a key signature of one flat. The notation includes various notes, rests, and dynamic markings such as *mf* and *f*. There are also some handwritten annotations like "Ped. bis B" and "b. + f".

23

24

Handwritten musical score for measures 23-24. The score is written on three staves: Treble clef (top), Bass clef (middle), and Bass clef (bottom). Measure 23 features a treble staff with a melodic line starting on a sharp sign, a middle staff with the handwritten text "# b b. bis", and a bottom staff with a bass line. Measure 24 continues the melodic and bass lines with various accidentals and phrasing marks.

Handwritten musical score for measures 25-28. The score is written on four staves: Treble clef (top), Treble clef (second), Bass clef (third), and Bass clef (bottom). Measure 25 includes the handwritten text "(inf. nicht)" in the second staff and "arco" in the bottom staff. The notation is dense with accidentals and phrasing marks across all staves.

Handwritten musical score for the first system, consisting of four staves. The top staff is in treble clef with a key signature of one sharp (F#) and a 4/4 time signature. It contains several measures of music with notes, rests, and dynamic markings like  $\underline{V}$ . The second staff is in treble clef with a key signature of one sharp (F#) and contains a long note with a slur and a circled  $\textcircled{P}$  dynamic marking. The third staff is in treble clef with a key signature of one sharp (F#) and contains notes with slurs and accents. The bottom staff is in bass clef with a key signature of one sharp (F#) and contains notes with slurs and dynamic markings like  $\underline{V}$ .

Handwritten musical score for the second system, consisting of four staves. The top staff is in treble clef with a key signature of one sharp (F#) and contains notes with slurs and dynamic markings like  $\underline{V}$ . It includes circled measure numbers 26 and 27. The second staff is in treble clef with a key signature of one sharp (F#) and contains notes with slurs and dynamic markings like  $\textcircled{P}$ . The third staff is in treble clef with a key signature of one sharp (F#) and contains notes with slurs and dynamic markings like  $\underline{V}$ . The bottom staff is in bass clef with a key signature of one sharp (F#) and contains notes with slurs and dynamic markings like  $\underline{V}$  and  $pp$ .



Handwritten musical score for measures 27-28. The system consists of five staves. The top staff is marked with a circled '27'. The third staff from the top is marked with 'pp' and contains a complex melodic line with many notes and slurs. The second staff from the top is marked with 'ppp' and contains a melodic line with slurs and a '+' sign. The bottom two staves are mostly empty with some horizontal lines. A circled '28' is at the end of the system.

Handwritten musical score for measures 29-30. The system consists of two staves. The top staff is marked with 'VIBR.' and contains a melodic line with slurs and a '+' sign. The bottom staff is marked with 'Bass' and contains a bass line with slurs and a '+' sign. There are circled 'p' and 'pp' markings. A circled '29' is at the end of the system.

Handwritten musical score for measures 31-32. The system consists of two staves. The top staff is marked with a circled '31' and contains a melodic line with slurs and a '+' sign. The bottom staff is marked with a circled '32' and contains a bass line with slurs and a '+' sign. There are circled 'p' and 'pp' markings.

31

32

33

34

34

35

36

37

pizz

38

D.C.  
teil  
(2)

gr. rit. - - -

39

arg 3 (pesante)

# Satz ②

Adagio

Horn

*p*

VIBR

*pp*

Pod. VIBRATO

②

Handwritten musical score for measures 3 and 4. The score is written on four staves. The top staff is in treble clef and contains a melodic line with slurs and accents. The second staff is in alto clef and contains a melodic line. The third staff is in bass clef and contains a melodic line. The bottom staff is in bass clef and contains a bass line with a 'pizz' (pizzicato) marking and a circled 'pp' (pianissimo) dynamic marking. A circled '3' is at the end of the first system.

Handwritten musical score for measures 5 and 6. The score is written on four staves. The top staff is in treble clef and contains a melodic line with slurs and accents. The second staff is in alto clef and contains a melodic line. The third staff is in bass clef and contains a melodic line. The bottom staff is in bass clef and contains a bass line with a 'pizz' (pizzicato) marking and a circled 'p' (piano) dynamic marking. A circled '4' is at the end of the second system.

Fl. *Pompra cresc.* ⑤

VIBR

Bass

Pedal

⑥

Pedal

letzten 3 Takte

⑦

Pedal



Zeit

Handwritten musical score for the first system, measures 7-9. The score is written on four staves. The top staff is a treble clef with a key signature of one sharp (F#) and a circled measure number '8'. The second staff is a treble clef with a circled sharp sign (F#) and contains melodic notation with slurs and accents. The third staff is a treble clef with rhythmic notation consisting of eighth notes with accents. The bottom staff is a bass clef with a circled 'P' and contains a simple bass line with quarter notes. Above the second staff, there are handwritten notes: '(in C moll. 2nd)' and a sharp sign. Above the top staff, there are handwritten notes: '(in C moll. 2nd)' and a sharp sign. Above the third staff, there is a handwritten note: 'Pavol'.

Handwritten musical score for the second system, measures 10-12. The score is written on four staves. The top staff is a treble clef with a key signature of one flat (F) and a circled measure number '9'. The second staff is a treble clef with a circled sharp sign (F#) and contains melodic notation with slurs and accents. The third staff is a treble clef with rhythmic notation consisting of eighth notes with accents. The bottom staff is a bass clef with a circled 'P' and contains a simple bass line with quarter notes. Above the second staff, there are handwritten notes: '(in F moll. 1st)'. Above the top staff, there are handwritten notes: '(in F moll. 1st)'. Above the third staff, there is a handwritten note: 'Pavol'.

Subito pp (sehr langsam)

Handwritten musical score for the first system. It features two staves: a treble clef staff and a bass clef staff. The treble staff begins with a bracket labeled "Pedale" and contains a series of chords, each marked with "pp" (pianissimo). The bass staff contains a few notes, including a half note with a sharp sign and a quarter note with a sharp sign, also marked with "pp". A circled number "18" is written at the end of the system.

Poco rit...

Handwritten musical score for the second system. It features two staves: a treble clef staff and a bass clef staff. The treble staff contains a series of chords, with a bracket labeled "Pedale" and a circled number "19" at the end. The bass staff contains a few notes, including a half note with a sharp sign and a quarter note with a sharp sign, also marked with "pp".

sehr ruhig (frei)

Handwritten musical score for the third system. It features three staves: a treble clef staff, a middle staff (likely for piano), and a bass clef staff. The treble staff begins with a bracket labeled "Pedale" and contains a series of chords, each marked with "pp". The middle staff contains a series of notes, including a half note with a sharp sign and a quarter note with a sharp sign, also marked with "pp". The bass staff contains a few notes, including a half note with a sharp sign and a quarter note with a sharp sign, also marked with "pp". A circled number "20" is written at the end of the system.

*breit*

7

ppp

ppp

ppp

Fl.

VIBR

pp

Parab

Parab bis

12

*Solo (sehr ruhig)*

VIBR

ppp

13

14

A

Handwritten musical score for measures 24 and 25. The score is written on three staves: a top staff with a treble clef, a middle staff with a bass clef, and a bottom staff with a bass clef. A large bracket on the left side of the first two staves is labeled with the number '4'. The tempo marking 'Sehr zart' is written in the middle of the first two staves. The first measure of measure 24 is marked with a circled 'p'. The score includes various musical notations such as notes, rests, and dynamic markings.

Handwritten musical score for measures 26 and 27. The score is written on three staves: a top staff with a treble clef, a middle staff with a bass clef, and a bottom staff with a bass clef. The score includes various musical notations such as notes, rests, and dynamic markings. The first measure of measure 26 is marked with a circled 'p'. The score includes various musical notations such as notes, rests, and dynamic markings.

Handwritten musical score for Horn and Vibraphone. The Horn part is in G major (one sharp) and the Vibraphone part is in D major (two sharps). The Vibraphone part includes the instruction "Pedal bis  $\text{B}^{\flat}$ ".

Horn

Vibr

*mp*

Pedal bis  $\text{B}^{\flat}$

Handwritten musical score for Horn and Vibraphone. The Horn part includes a circled measure number 17. The Vibraphone part includes a circled measure number 17 and a circled measure number 18. The Vibraphone part includes the instruction "rit.  $\text{dim}$ ".

Horn

Vibr

*pp*

rit.  $\text{dim}$

17

18

Handwritten musical score for Flute and Bass. The Flute part is in G major (one sharp) and the Bass part is in D major (two sharps). The Bass part includes the instruction "rit.  $\text{dim}$ ".

Fl.

Bass

*pp*

rit.  $\text{dim}$

18

19

(ad. lib.) Okt. tiefer

sehr ruhig langsam + frei)

Horn *frei*

*pp*

*p* *fp* *ffpp*

(20)

*pp* *fp* *p* *fp* *pp*

*lunge*

File  
Setz (2)

Satz 3  
(sehr rasch)  $\frac{4}{4}$   $\left( \frac{2}{2} \right)$

Satz [3]

Prestissimo (leicht)

①

mf

pizz Solo

②

Ped.

mf

din



Handwritten musical score for measures 33-36, circled with a '3'. The score consists of four staves. The first three staves are in treble clef, and the fourth is in bass clef. The music is in G major (one sharp). Measure 33 features a melodic line in the first staff with a slur and a fermata, and a bass line with a slur. Measure 34 continues the melodic line with a slur and a fermata. Measure 35 has a melodic line with a slur and a fermata, and a bass line with a slur. Measure 36 concludes with a melodic line and a bass line, both with slurs. A 'Ped.' marking is present in the third staff of measure 33.

Handwritten musical score for measures 37-40, circled with a '4'. The score consists of four staves. The first three staves are in treble clef, and the fourth is in bass clef. The music is in G major (one sharp). Measure 37 features a melodic line in the first staff with a slur and a fermata, and a bass line with a slur. Measure 38 continues the melodic line with a slur and a fermata. Measure 39 has a melodic line with a slur and a fermata, and a bass line with a slur. Measure 40 concludes with a melodic line and a bass line, both with slurs. A 'Ped.' marking is present in the third staff of measure 37. Dynamic markings include *mf* and *f*.

Handwritten musical score for system 5, consisting of three staves. The music is in treble clef with a key signature of one sharp (F#). The first staff contains a melodic line with a slur over the first two measures and a fermata in the third. The second staff contains a similar melodic line with a slur and a fermata. The third staff contains a bass line with a circled 'H' in the first measure, a slur, and a fermata. A circled number '5' is in the top right corner.

Handwritten musical score for system 6, consisting of three staves. The music is in treble clef with a key signature of one sharp (F#). The first staff contains a melodic line with a slur over the first two measures and a triplet of eighth notes in the third. The second staff contains a similar melodic line with a slur and a triplet. The third staff contains a bass line with a slur and a fermata. A circled number '6' is in the top right corner.

*sempre cresc.*

VIB

Bass

7

Pedal bis

9

Handwritten musical score for measures 9 and 10. The system consists of three staves. Measure 9 is marked with a circled '9' and measure 10 with a circled '10'. The notation includes various notes, rests, and dynamic markings such as *p* and *cresc*. The music is written in a complex, possibly chromatic style.

Handwritten musical score for measures 10 and 11. The system consists of three staves. Measure 10 is marked with a circled '10' and measure 11 with a circled '11'. The notation includes various notes, rests, and dynamic markings such as *f* and *p*. The music continues with complex rhythmic and melodic patterns.

Handwritten musical score for measures 11-12. The score is written on three staves. The top staff shows chord diagrams for guitar. The middle staff contains a melodic line with various ornaments and dynamics. The bottom staff shows a bass line with a circled '4' and the word 'arco'.

Measure 11: Chord diagrams for D major, A major, and F major. The melodic line starts with a circled 'ff' and includes accents and slurs. The bass line has a circled '4' and the word 'arco'.

Measure 12: The melodic line continues with a circled 'ff' and includes the word 'din' with an accent. The bass line has a circled '4' and the word 'arco'.

Handwritten musical score for measures 13-14. The score is written on three staves. The top staff is mostly empty. The middle staff contains a melodic line with a circled 'p' and the word 'Pedal'. The bottom staff contains a bass line with a circled 'p' and the word 'pizz'.

Measure 13: The melodic line starts with a circled 'p' and the word 'Pedal'. The bass line has a circled 'p' and the word 'pizz'. There are also some handwritten notes like 'arco' and 'pizz'.

Measure 14: The melodic line continues with a circled 'p' and the word 'Pedal'. The bass line has a circled 'p' and the word 'pizz'. There are also some handwritten notes like 'arco' and 'pizz'.

Handwritten musical score for measures 12 and 13. The score is written on four staves. Measure 12 is marked with a circled '12' and measure 13 with a circled '13'. The notation includes various notes, rests, and accidentals. A circled '58' is present in the second staff of measure 12. A 'Ped' (pedal) marking is present in the third staff of measure 12. The bottom staff contains a series of notes with accidentals.

Handwritten musical score for measures 14 and 15. The score is written on four staves. Measure 14 is marked with a circled '14' and measure 15 with a circled '15'. The notation includes various notes, rests, and accidentals. The word 'din' is written above the first staff in measure 14 and below the first staff in measure 15. A circled '59' is present in the second staff of measure 14. A circled '60' is present in the third staff of measure 14. The bottom staff contains a series of notes with accidentals.

15

VIBR

Bass

*sempre cresc. →*

*Pedal*

*p = cresc. →*

*pizz*

*p <*

16

*mf <*

*mf <*

17

*f <*

*f <*

18

*Pedal in B*

*f <*

Solo

Horn

VIBR

Bass



*Sempres Cresc.*

Handwritten musical score for the first system. It consists of three staves: treble clef (top), alto clef (middle), and bass clef (bottom). The treble staff contains a melodic line with eighth and sixteenth notes, starting with a circled plus sign. The alto staff contains a harmonic line with quarter notes and rests. The bass staff contains a bass line with quarter notes and rests. A dynamic marking  $mf$  is present in the bass staff. A large bracket spans the bottom of the system.

Handwritten musical score for the second system. It consists of three staves: treble clef (top), alto clef (middle), and bass clef (bottom). The treble staff continues the melodic line with eighth and sixteenth notes, including accents. The alto staff continues the harmonic line. The bass staff continues the bass line. A dynamic marking  $f$  is present in the bass staff. A large bracket spans the bottom of the system.

Handwritten musical score for the third system. It consists of three staves: treble clef (top), alto clef (middle), and bass clef (bottom). The treble staff concludes the melodic line with a long note and a fermata. The alto staff concludes the harmonic line. The bass staff concludes the bass line. A circled number 79 is written in the top right corner. A large bracket spans the bottom of the system.

19

Handwritten musical score for measures 19-20. The score consists of four staves:

- Flute (Fl.):** Contains a melodic line with many trills and grace notes.
- Violin (VIBR):** Contains a sustained harmonic accompaniment with notes like G# and D.
- Viola (Vcl.):** Contains a sustained harmonic accompaniment with notes like G# and D.
- Bass:** Contains a bass line with notes like G# and D.

Dynamic markings include **pp** and **ppp**. A circled **pp** is also present. A circled **pp** with an arrow points to the word **solist** written below the bass staff.

Handwritten musical score for measures 21-22. The score consists of three staves:

- Flute (Fl.):** Continues the melodic line with trills.
- Violin (VIBR):** Continues the sustained harmonic accompaniment.
- Bass:** Continues the bass line.

Handwritten musical score for measures 23-24. The score consists of three staves:

- Flute (Fl.):** Continues the melodic line with trills.
- Violin (VIBR):** Continues the sustained harmonic accompaniment.
- Bass:** Continues the bass line.

A circled **20** is written at the end of the first staff.

Handwritten musical score for the first system. It consists of three staves: a treble clef staff with a melodic line, a bass clef staff with a harmonic accompaniment, and a bass clef staff with a bass line. The music is in 3/4 time and features a key signature of one sharp (F#). The first measure is marked with a double bar line and a sharp sign. The melody includes a triplet of eighth notes in the second measure and a triplet of sixteenth notes in the fourth measure. There are various ornaments and slurs throughout the system.

Handwritten musical score for the second system, continuing the piece. It follows the same three-staff format as the first system. The melody in the treble clef staff continues with a series of eighth and sixteenth notes, some with slurs and accents. The bass clef staff provides a steady harmonic accompaniment with quarter and eighth notes. The system concludes with a double bar line.

Handwritten musical score for the third system, which includes a repeat sign at the end. The notation continues with complex rhythmic patterns in the treble clef staff, including a triplet of eighth notes. The bass clef staff continues with its accompaniment. A circled number '21' is written in the right margin, indicating a measure number. The system ends with a double bar line and a repeat sign.

Handwritten musical score for the first system. It consists of four staves. The top two staves are empty. The third staff contains a piano part with notes and rests, starting with a circled *pp* dynamic marking. The bottom staff contains a bass line with fingerings indicated by numbers 1-4 and accents (^). A circled *tr* marking is present below the bass line.

Handwritten musical score for the second system. It consists of four staves. The top two staves are empty. The third staff continues the piano part from the first system. The bottom staff continues the bass line with fingerings and accents. A circled *tr* marking is present at the end of the system.

Violoncello (Vcllo) and Bass (Bass) system. The Violoncello part is in treble clef with a circled 'F' indicating the key signature. The Bass part is in bass clef. A 'Ped.' (pedal) marking is present above the first measure. The music consists of two measures with chords and a bass line.

Violoncello (Vcllo) and Bass (Bass) system. The Violoncello part is in treble clef. The Bass part is in bass clef. A 'Ped.' (pedal) marking is present above the first measure. The music consists of two measures with chords and a bass line. A circled number '23' is in the right margin.

Violoncello (Vcllo) and Bass (Bass) system. The Violoncello part is in treble clef. The Bass part is in bass clef. A 'Ped.' (pedal) marking is present above the first measure. The music consists of three measures with chords and a bass line. A circled number '24' is in the right margin.

Violoncello (Vcllo) and Bass (Bass) system. The Violoncello part is in treble clef. The Bass part is in bass clef. A 'Ped.' (pedal) marking is present above the first measure. The music consists of four measures with chords and a bass line. A circled number '25' is in the right margin.

*sempre din*

D.C. (26)

*tempo (sempre cresc. →)*

(27)

Handwritten musical score for page 28, featuring four staves. The notation includes treble and bass clefs, dynamic markings such as *mf*, *f*, and *ped.*, and various rhythmic and melodic symbols. A circled number '28' is in the top right corner.

Handwritten musical score for page 29, featuring four staves. The notation includes treble and bass clefs, dynamic markings such as *f*, and various rhythmic and melodic symbols. A circled number '29' is in the top right corner.

moder steigend →

24

30

31



Handwritten musical score for the first system. It consists of four staves. The top staff is for Flute, with the word "Flute" written above it. The second staff is for Horn, with a sharp sign (#) above it. The third and fourth staves are for Bassoon and Bass, with a sharp sign (#) above the third staff. The music is in 4/4 time and features a melodic line in the flute and horn parts, with a bass line in the bassoon and bass parts.

Handwritten musical score for the second system. It consists of four staves. The top staff is for Flute. The second staff is for Horn. The third staff is for Bassoon, with the word "Fagott" written above it. The fourth staff is for Bass. The music continues with a melodic line in the flute and horn parts, and a bass line in the bassoon and bass parts. There are some markings on the right side of the page, possibly indicating dynamics or performance instructions.

Obt. 1970 F. M.

Geschrieben für  
Flöte: Adolf Schuler

Adolf Schuler

Horn: Heribert Wankstamer  
Viola: Herr Gschwandler  
Bass: Johannes Gschwandler