

Notenheft

Bitte MATERIAL schonen

FÜR ORGEL (Elektronenorgel)

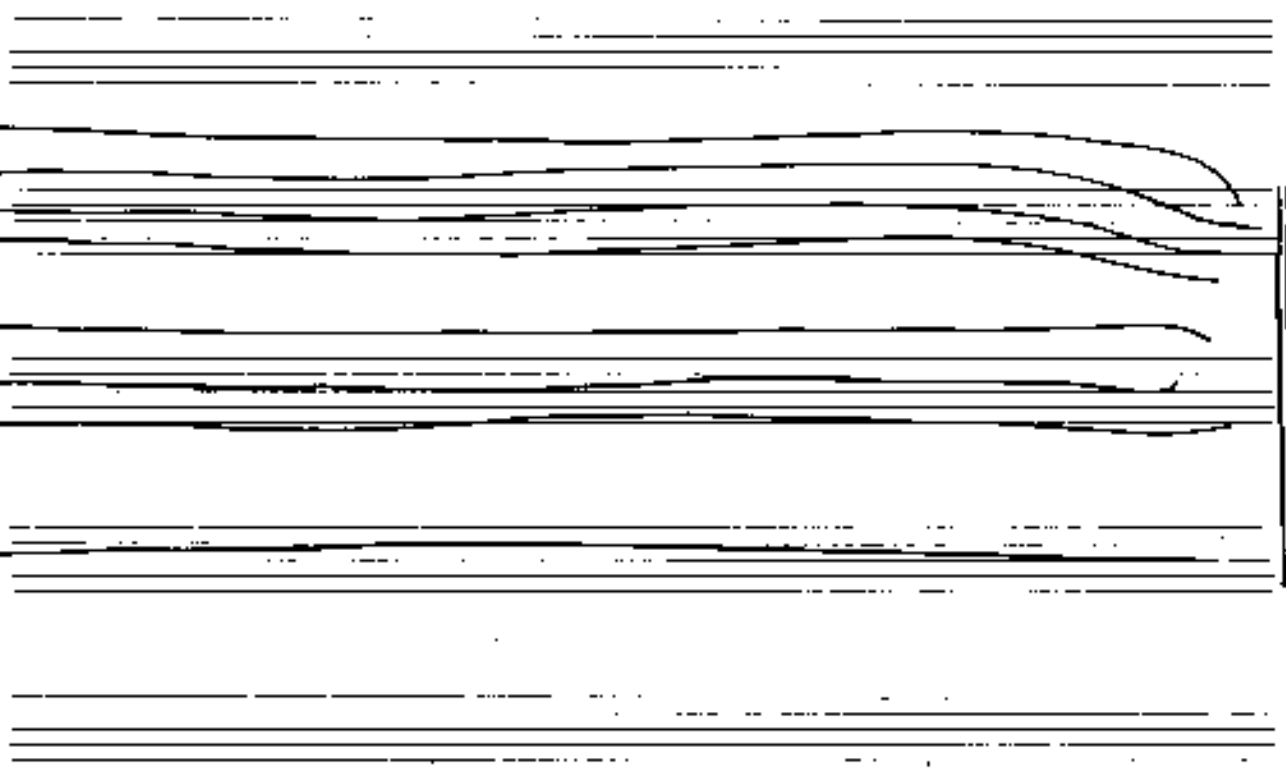
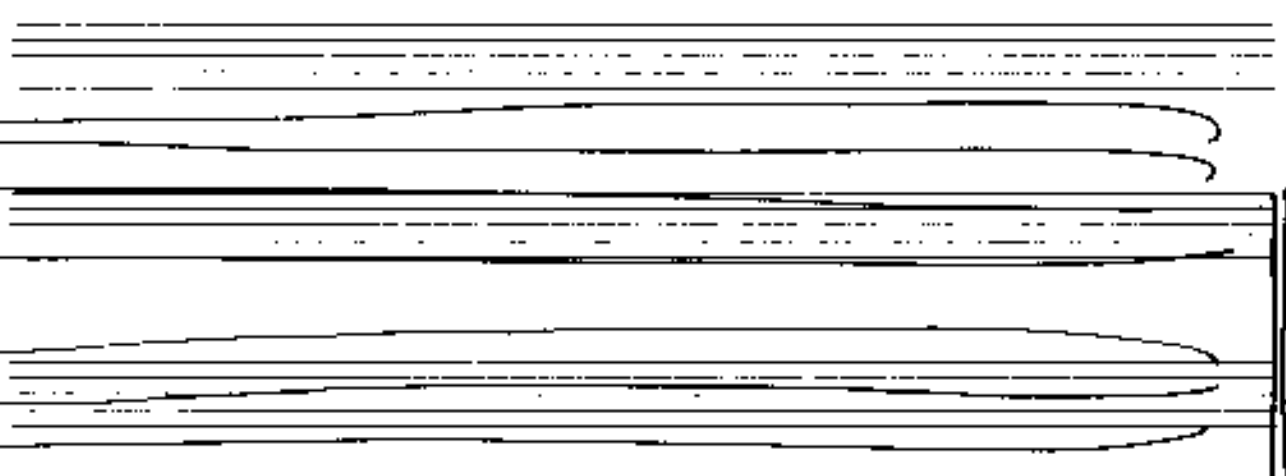
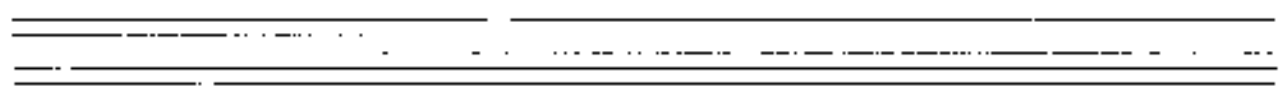
1970

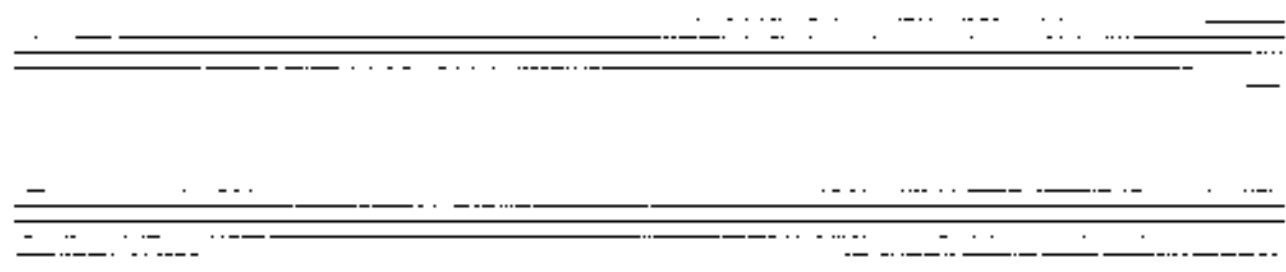
Edoef Scherbaum

Handwritten musical notation for the first system, consisting of three staves. The top staff begins with a treble clef and a *pp* dynamic marking. It contains a series of notes with accidentals: a natural note, a flat note, and a sharp note. The middle staff also starts with a treble clef and a *pp* dynamic marking, featuring a flat note, a natural note, and a sharp note. The bottom staff begins with a bass clef and a *pp* dynamic marking, containing a sharp note and a natural note. A large brace on the left side groups all three staves together.

Handwritten musical notation for the second system, consisting of three staves. The top staff begins with a treble clef and a *pp* dynamic marking. It features a large graphic element consisting of multiple lines radiating from a point on the left, resembling a fan or a cluster. A *pp* dynamic marking is placed below this graphic. The middle staff contains a *pp* dynamic marking. The bottom staff features a rectangular box with a *pp* dynamic marking below it. A *ppp* dynamic marking is located at the far right of the system.

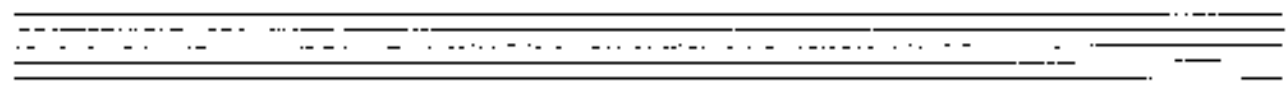
Handwritten musical notation for the third system, consisting of three staves. The top staff begins with a treble clef and a *pp* dynamic marking. It contains a sharp note, a natural note, and another natural note. The middle staff starts with a treble clef and a *pp* dynamic marking, featuring a flat note, a natural note, and a flat note. The bottom staff begins with a bass clef and a *pp* dynamic marking, containing a natural note. A *ppp* dynamic marking is located at the bottom right of the system.

A musical staff with two systems of notation. The first system consists of a series of rectangular blocks of varying heights and widths, with dynamic markings *ff*, *f*, *mp*, and *ppp* written below. The second system is a long horizontal bar with a vertical line near the start, and dynamic markings *fff*, *f*, *mp*, and *ppp* written below.A musical staff with a series of four vertical bars of varying widths, with the dynamic marking *ppp* written below.

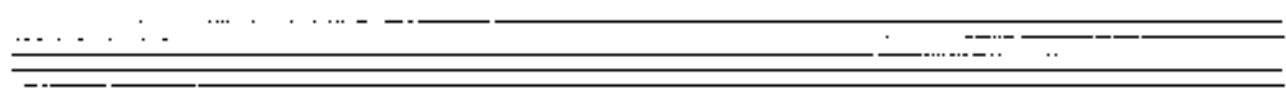


A musical staff with a treble clef. It contains three measures. The first measure has a quarter note on G4, a quarter note on A4, and a quarter note on B4, with a *ppp* dynamic marking. The second measure has a quarter note on C5, a quarter note on B4, and a quarter note on A4, with a solid black square below the staff. The third measure has a quarter note on G4, a quarter note on A4, and a quarter note on B4, with a *pp* dynamic marking. A crescendo hairpin starts in the second measure and ends in the third. Below the staff, there is a *pp* marking on the left and a *fff* marking on the right, with a hairpin connecting them.

A musical staff with a treble clef. It contains three measures. The first measure has a quarter note on G4, a quarter note on A4, and a quarter note on B4, with a *ppp* dynamic marking. The second measure has a quarter note on C5, a quarter note on B4, and a quarter note on A4, with a solid black square below the staff. The third measure has a quarter note on G4, a quarter note on A4, and a quarter note on B4, with a *pp* dynamic marking. A large, wide crescendo hairpin spans across all three measures.



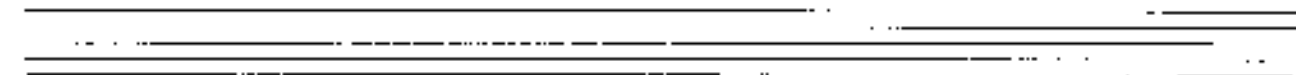
A musical staff with a treble clef. It contains three measures. The first measure has a quarter note on G4, a quarter note on A4, and a quarter note on B4, with a *ppp* dynamic marking. The second measure has a quarter note on C5, a quarter note on B4, and a quarter note on A4, with a solid black square below the staff. The third measure has a quarter note on G4, a quarter note on A4, and a quarter note on B4, with a *pp* dynamic marking. A crescendo hairpin starts in the second measure and ends in the third. Below the staff, there is a *pp* marking on the left and a *fff* marking on the right, with a hairpin connecting them.



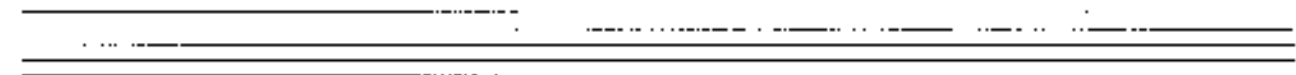
pp pp fff fff

ppp ppp

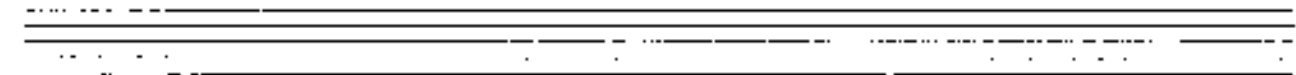
pp pp ppp



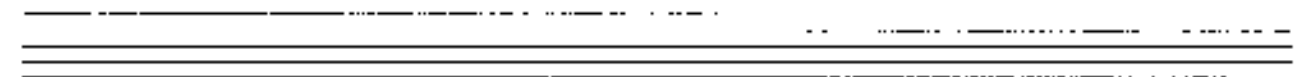
Handwritten musical notation on three staves. The top staff is filled with dense vertical lines. The middle staff has a treble clef, a key signature of two sharps (F# and C#), and a circled 'C' time signature. The bottom staff has a bass clef and contains a solid black square, a vertical bar, and a wavy line.

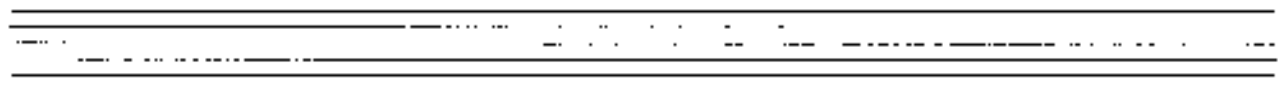
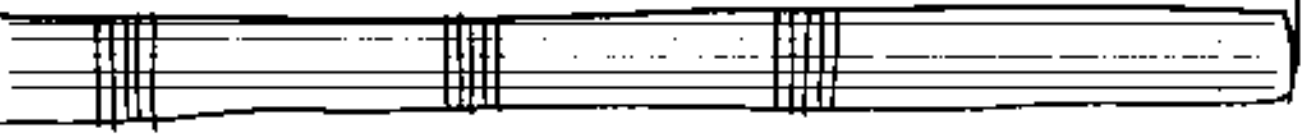
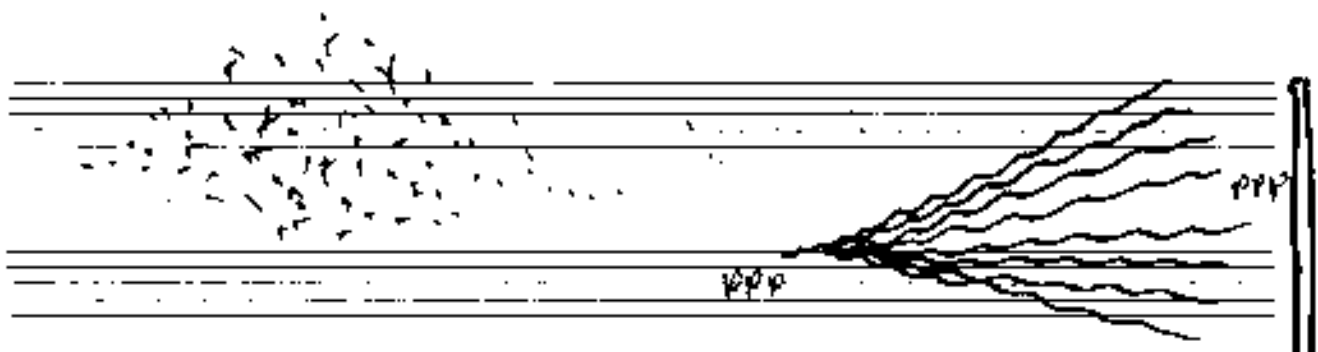
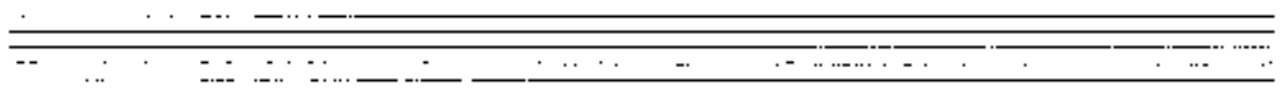
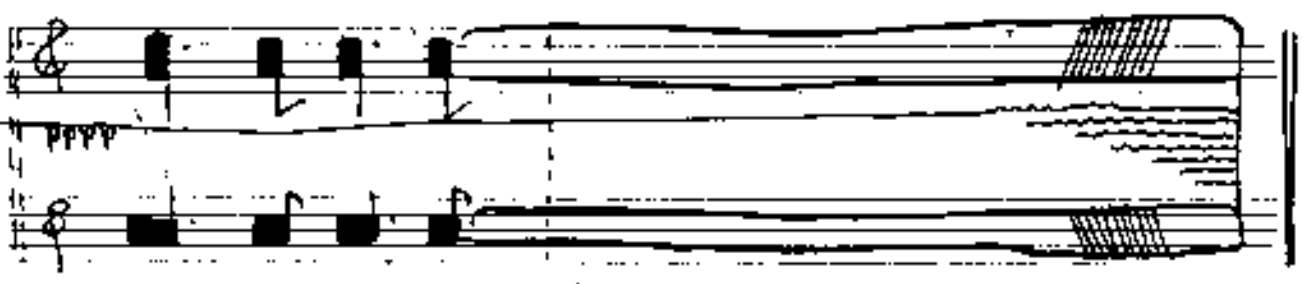
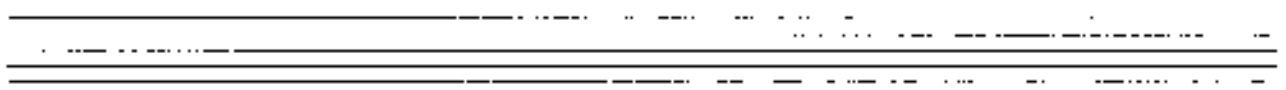
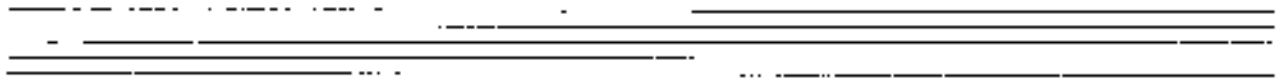


Handwritten musical notation on two staves. The top staff has a treble clef, a key signature of two sharps, and a circled 'C' time signature. It features a melodic line with notes, rests, and a large oval shape. The bottom staff has a bass clef and contains notes and rests. The word "ppp" is written on the left side.



Handwritten musical notation on two staves. The top staff has a treble clef and contains a series of notes with the word "pppp" written above them. The bottom staff has a bass clef and contains vertical bars and notes with the word "ppp" written below them.



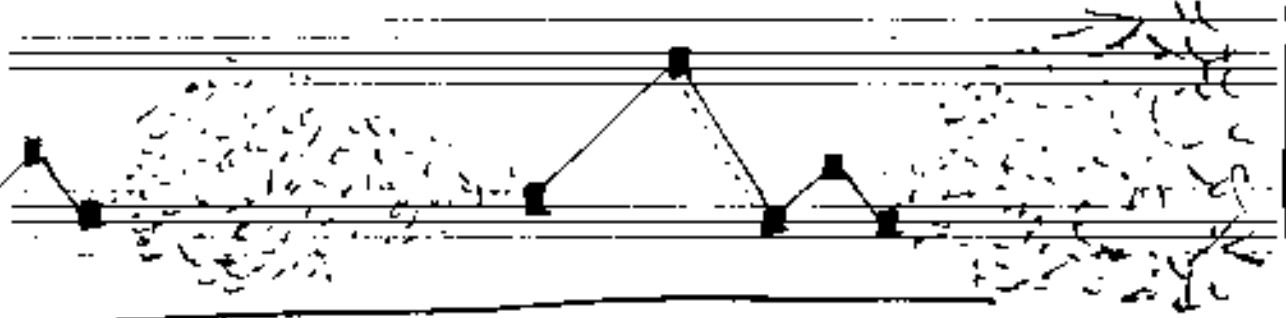
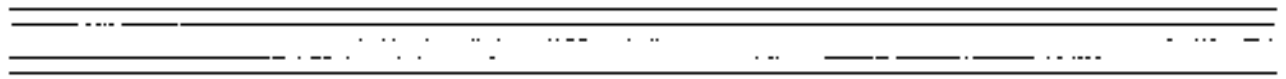


pppp

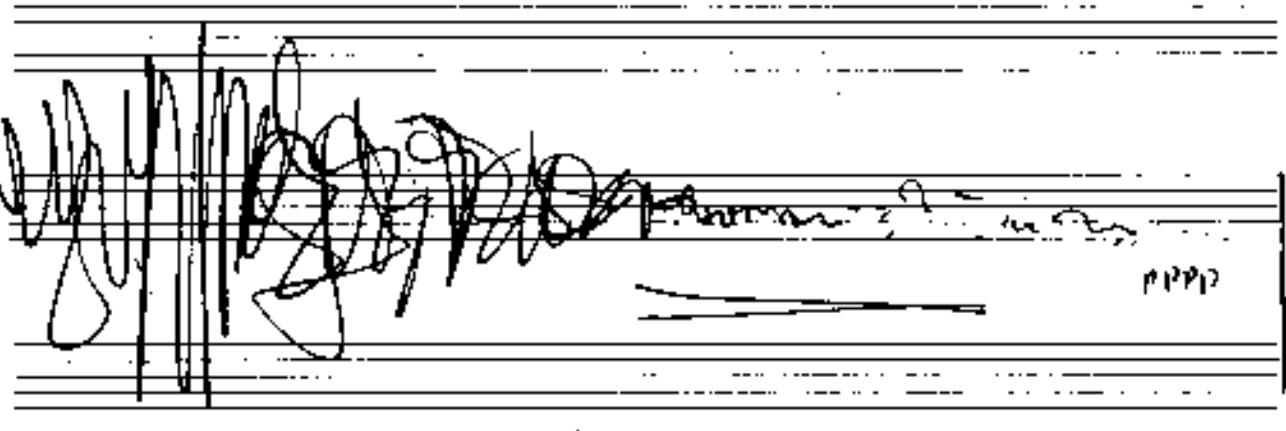
pppp

pppp

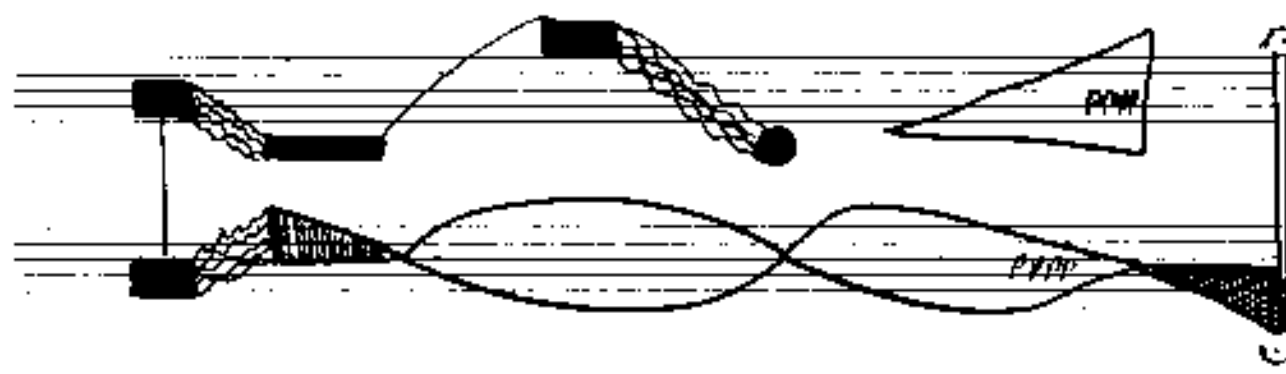
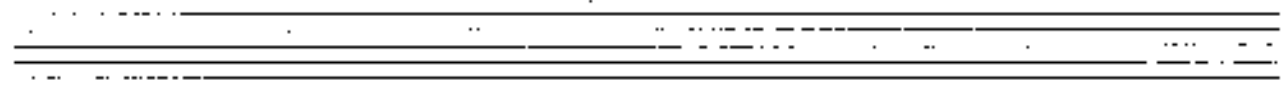
(G)
pp
(3)



pppp

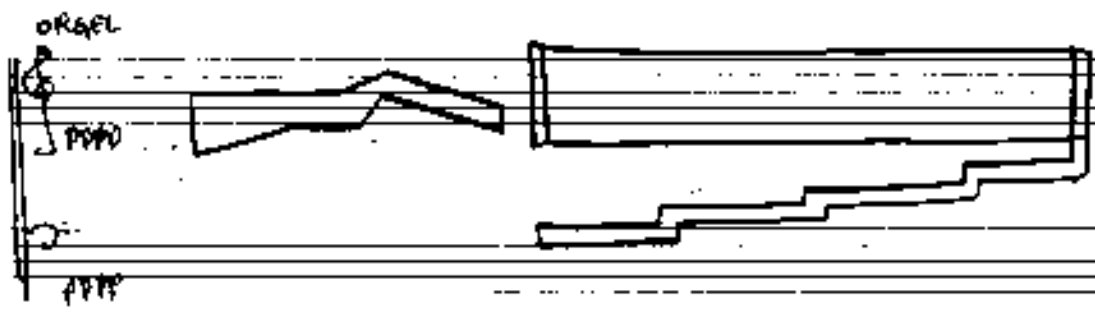
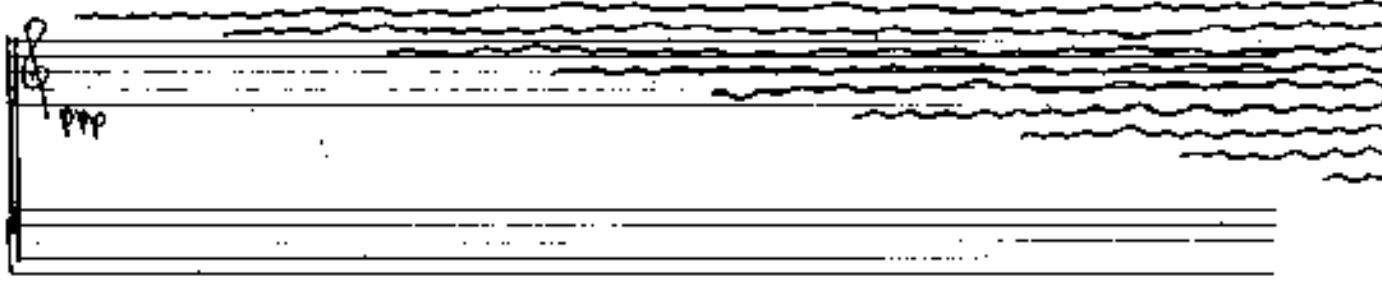
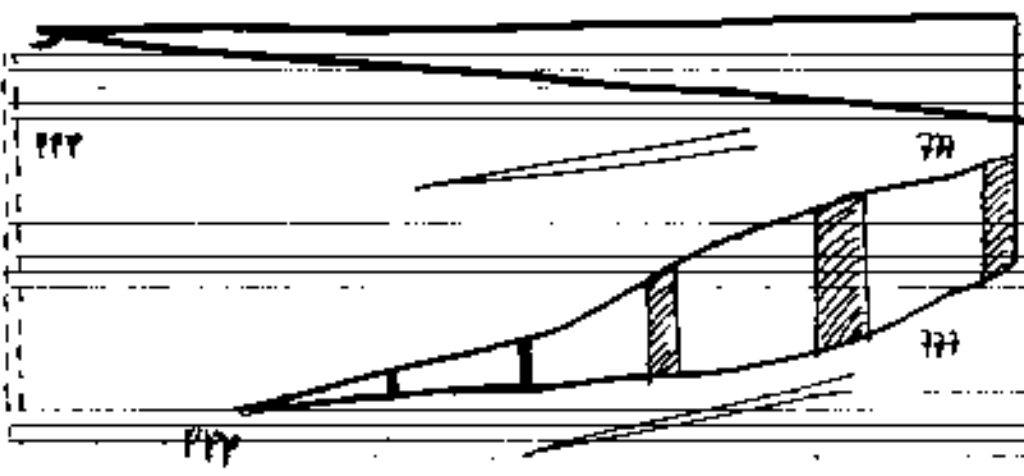


pppp



pppp

pppp

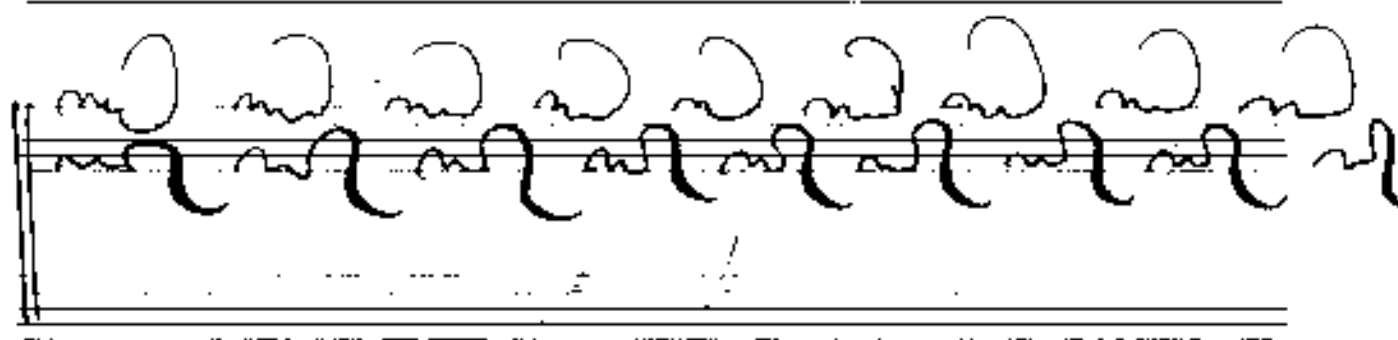
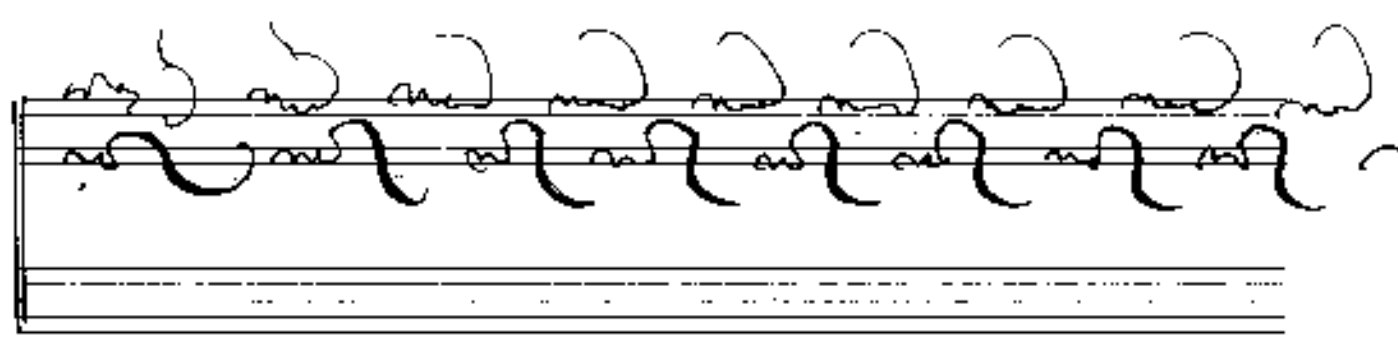
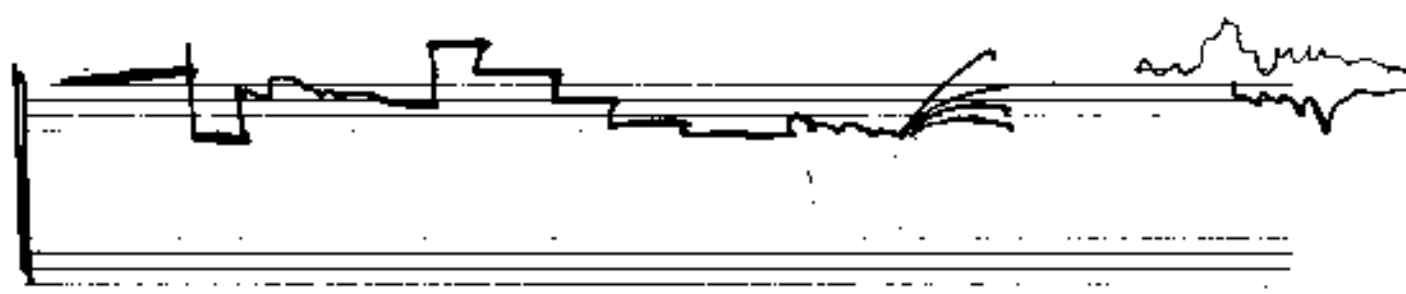
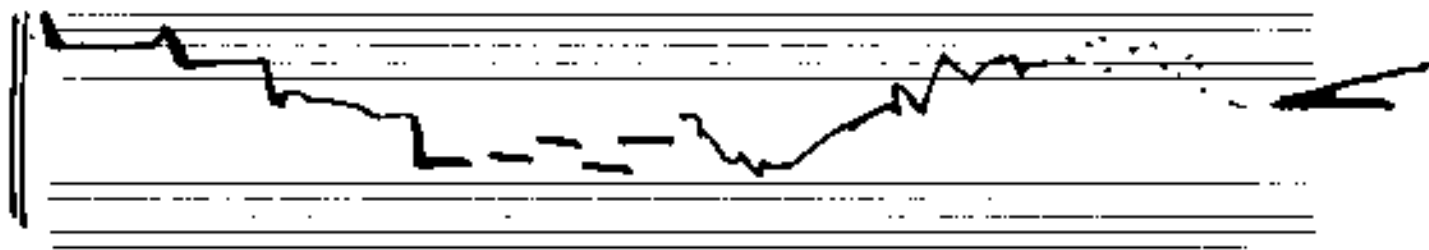


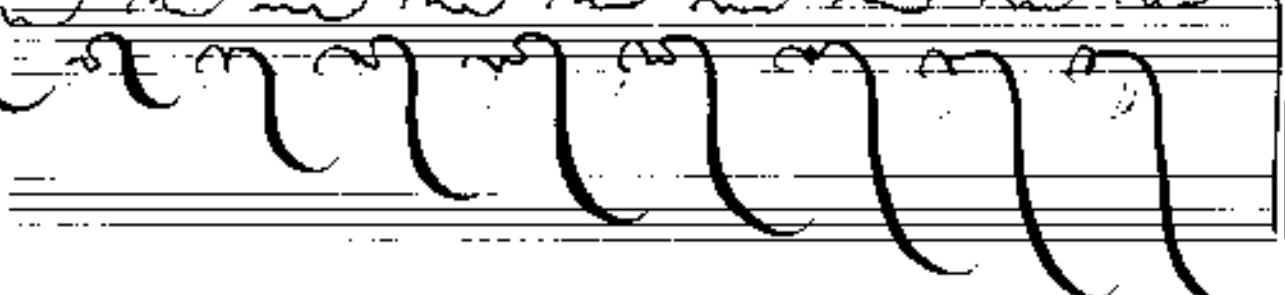
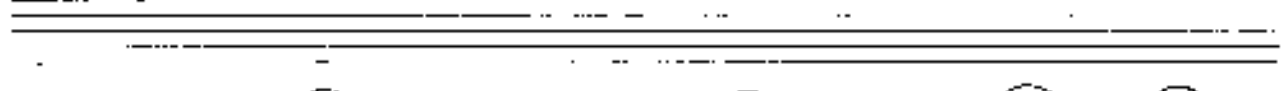
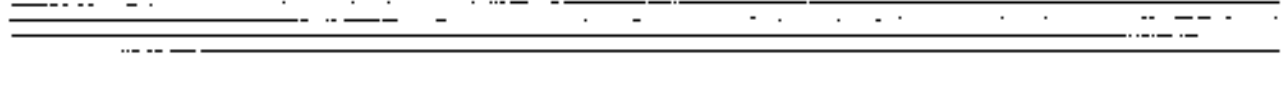
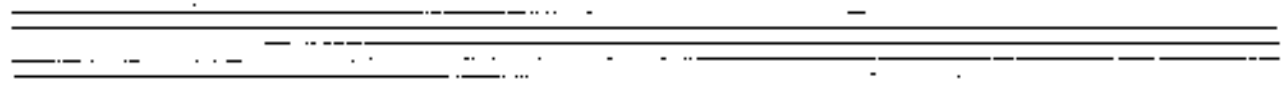
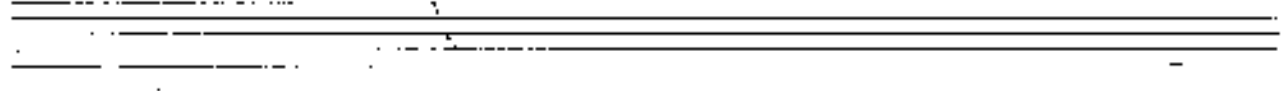
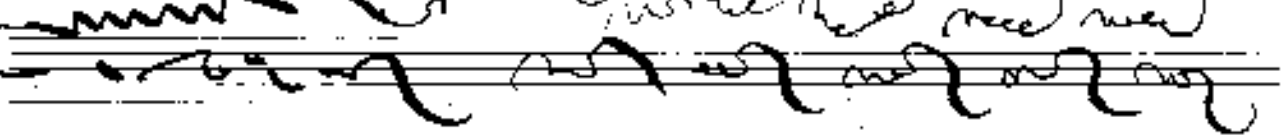
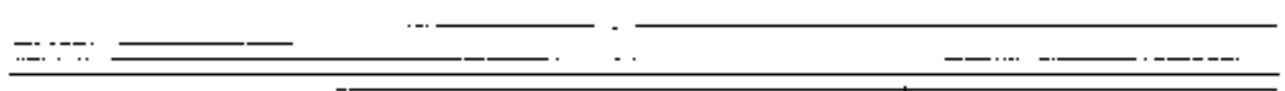
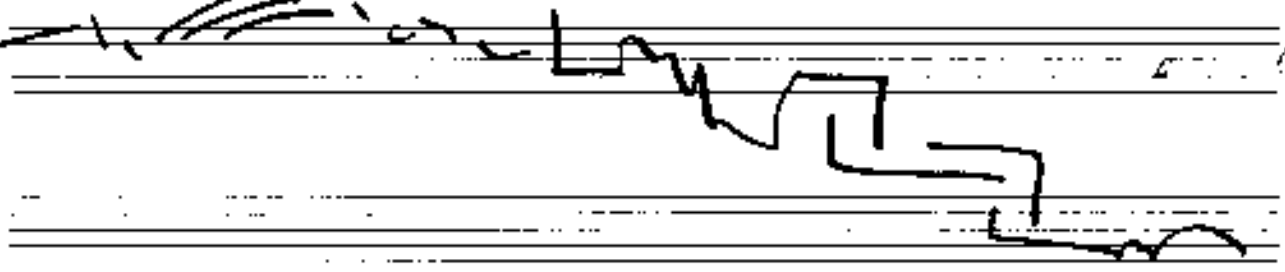
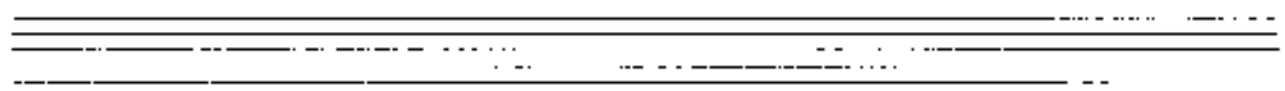
Handwritten musical score for three staves. The top staff features a large, dense scribble on the left side. The middle and bottom staves contain musical notation, including notes, accidentals (sharps and naturals), and dynamic markings. The notation is somewhat sketchy and appears to be a working draft.

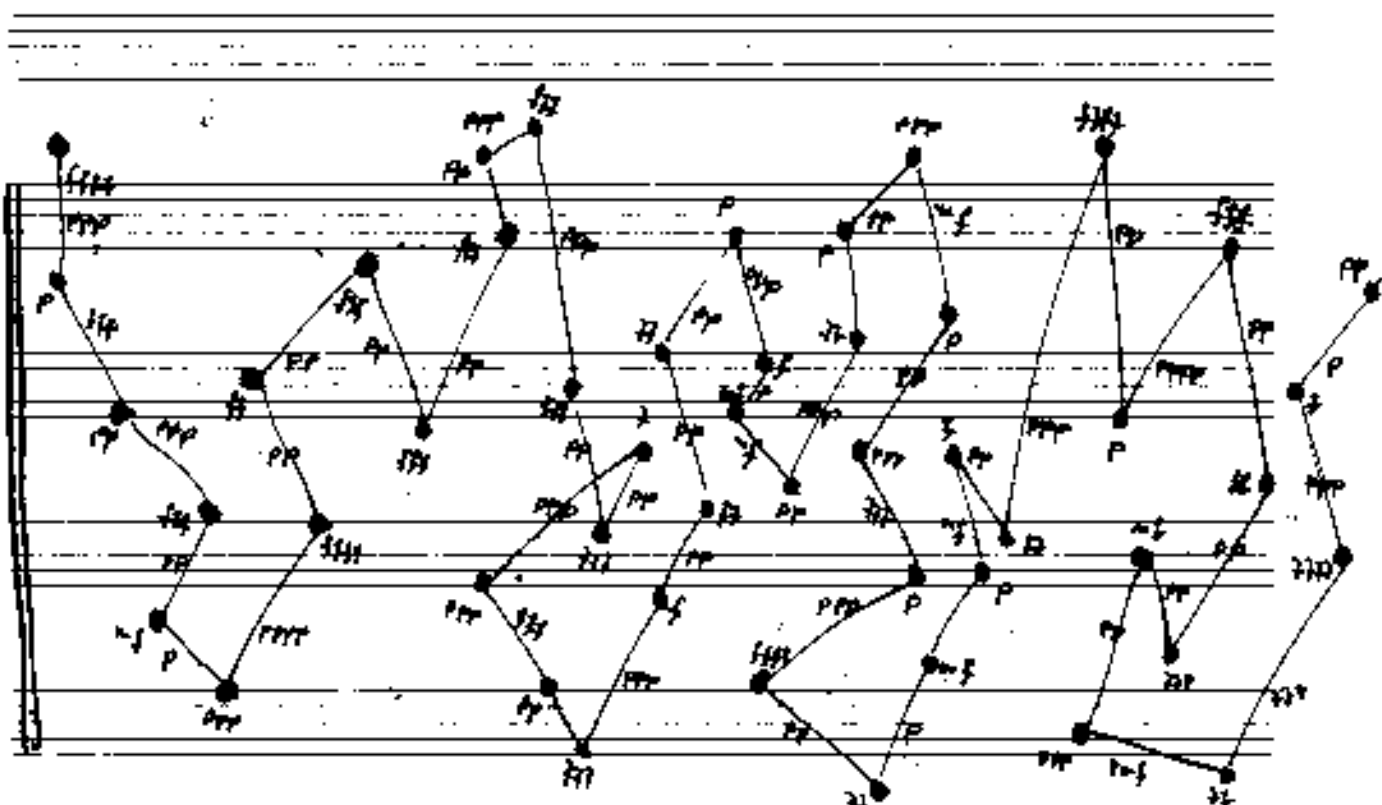
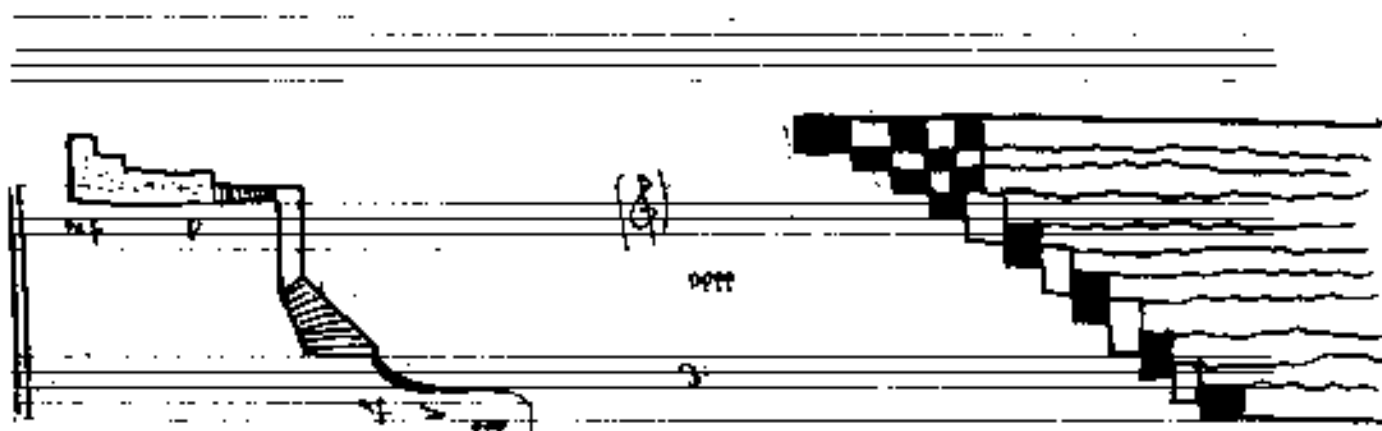
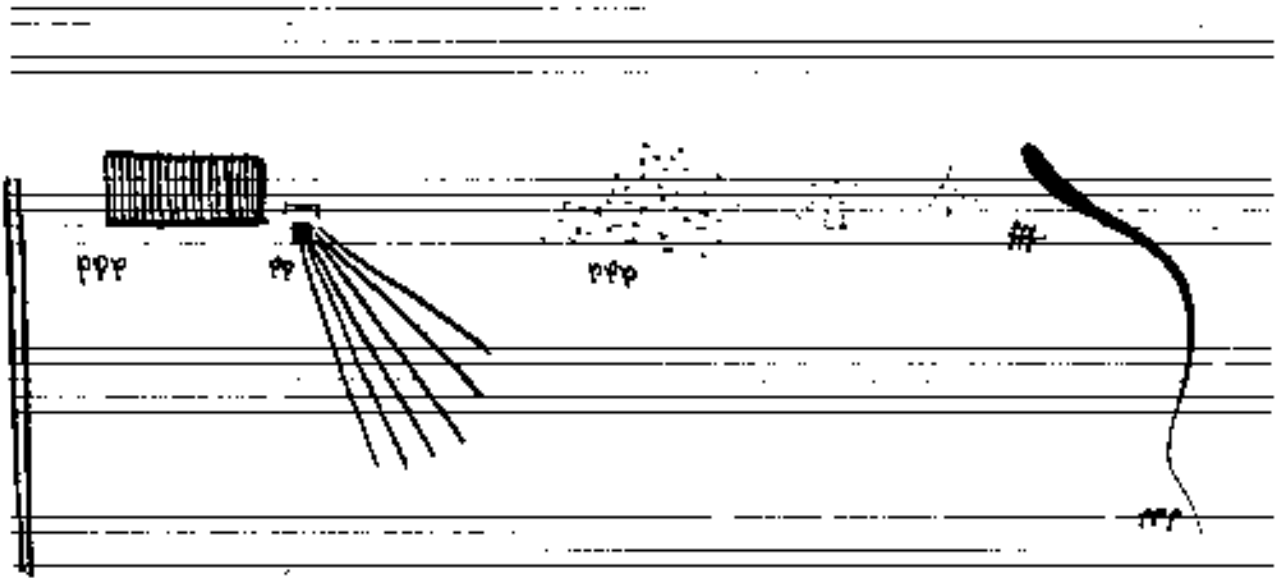
Handwritten musical score for a single staff labeled "(Flute Solo)". The notation includes notes with accidentals, dynamic markings such as "ppp", "f", and "ppp", and performance instructions like "VIBRATO". A thick, solid black bar is drawn across the bottom of the staff, likely indicating a section to be deleted or a specific performance instruction.

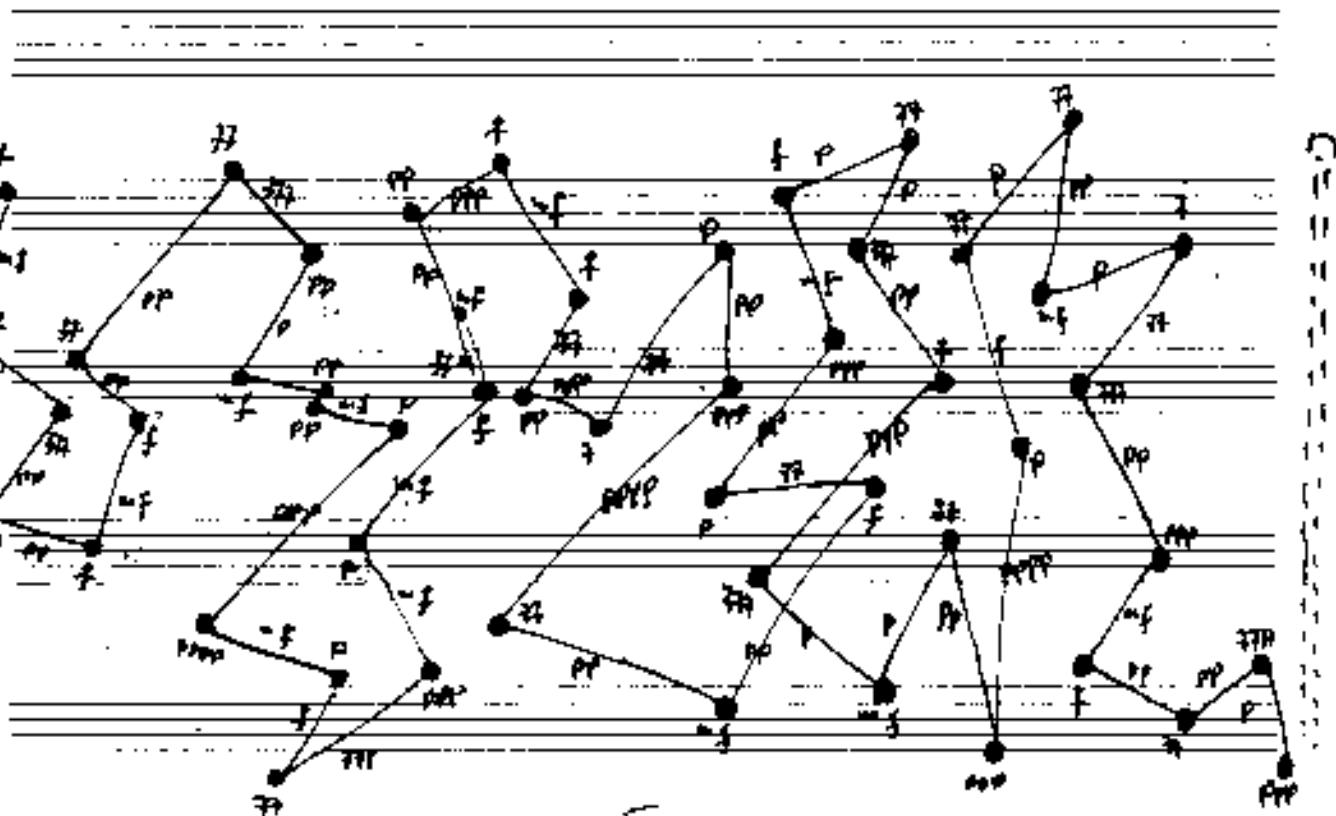
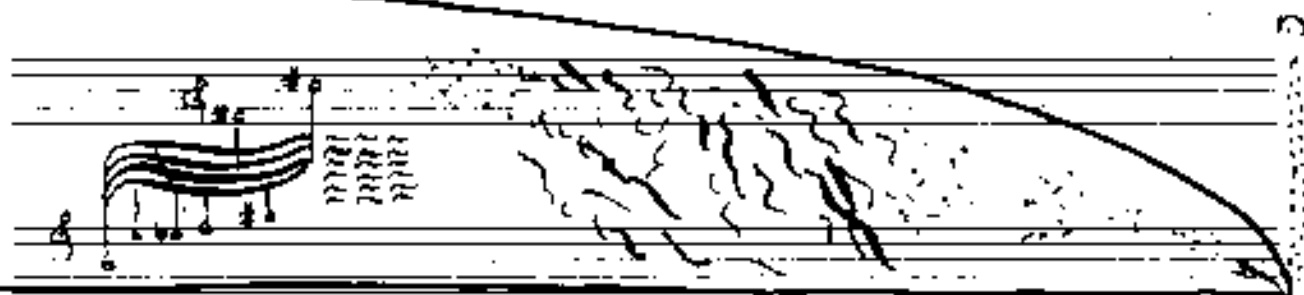
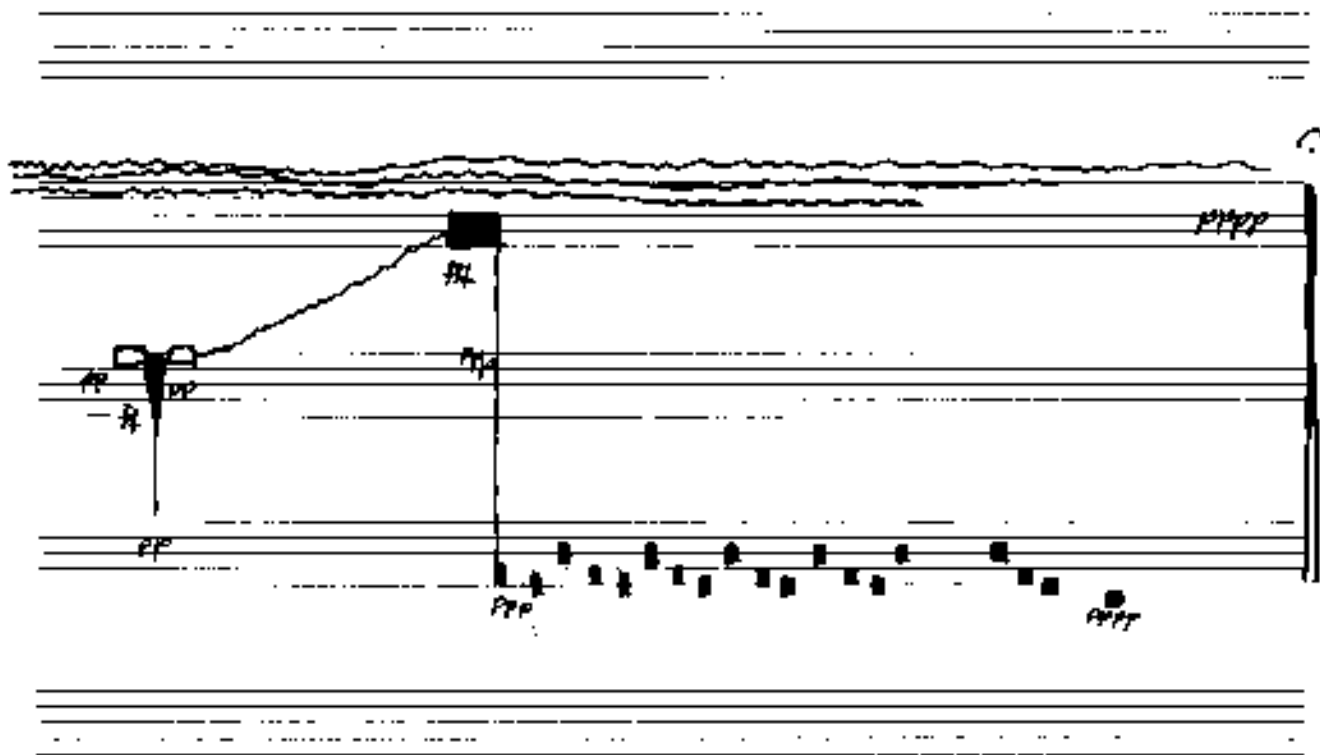
Handwritten musical score for two staves. The top staff contains notes with accidentals and a slur. The bottom staff contains notes with stems and a slur. The notation is clear and appears to be a more finished section of the score.

Handwritten text at the top of the page, possibly a title or header.









Handwritten musical staff featuring a jagged line graph. The line starts at a low point, rises to a peak, falls to a trough, rises to a higher peak, and then falls to a low point. Dynamic markings include *ppp* at the start, *f* near the first peak, and *pp* near the second peak. There are also some scribbled-out notes on the right side.

Handwritten musical score for three staves. The top staff has notes with dynamic markings *f*, *pp*, *pp*, and *pp*. The middle and bottom staves have notes with dynamic markings *pp* and *pp*. There are some scribbles on the right side of the bottom staff.

Handwritten musical score for three staves. The top staff has notes with dynamic markings *ppp* and *ppp*. The middle and bottom staves have notes with dynamic markings *ppp* and *ppp*. There are some scribbles on the right side of the bottom staff.

TOMBAND MONTAGE
 (über Männer)
 (über Jesuitensprachen) im Saal oder Kirche verteilt

Handwritten musical staff with notes and dynamic markings *pp* and *b*.

Handwritten musical notation on a five-line staff. It features a series of wavy lines on the left, followed by a sharp peak and a subsequent decline. Dynamic markings include 'p', 'pp', and 'ppp'. There are also some scribbles and a small 'A' above the first peak.

Handwritten musical notation on a five-line staff, consisting of several horizontal lines with some scribbles and a few notes at the bottom.

Handwritten musical notation on a five-line staff. It includes a vertical dashed line, a 'C' time signature, and various notes and markings such as 'p', 'pp', and 'ppp'.

Handwritten musical notation on a five-line staff, showing a series of horizontal lines with some scribbles and a few notes at the bottom.

Handwritten musical notation on a five-line staff, featuring a series of notes and rests, with some markings below the staff.

1910 RYOLF SCHERERON.