

Teil 1 für große

Engel

1970

Georg Schenker

Notenheft

Teil ^{OA} für Probe Orgel

1970 Adolf Scherbaum

breit |

Teil ②

Handwritten musical notation for the first system. It features a treble clef, a key signature of one sharp (F#), and a 2/4 time signature. The notation consists of a single melodic line in the treble clef and a piano accompaniment in the bass clef. The piano part features chords and arpeggiated figures. The system is enclosed in a dashed-line box.

Handwritten musical notation for the second system. It continues the melody and piano accompaniment from the first system. It includes a treble clef, a key signature of one sharp (F#), and a 2/4 time signature. The piano part continues with chords and arpeggiated figures. The system is enclosed in a dashed-line box.

Handwritten musical score system 1. It consists of three staves. The top staff is a treble clef with a key signature of one sharp (F#) and a 4/4 time signature. It contains a melodic line with notes and rests. The middle staff is a bass clef with a key signature of one sharp (F#) and a 4/4 time signature, containing a bass line. The bottom staff is a bass clef with a key signature of one sharp (F#) and a 4/4 time signature, containing a bass line. The system is enclosed in a dashed-line box.

Handwritten musical score system 2. It consists of three staves. The top staff is a treble clef with a key signature of one sharp (F#) and a 4/4 time signature. It contains a melodic line with notes and rests. The middle staff is a bass clef with a key signature of one sharp (F#) and a 4/4 time signature, containing a bass line. The bottom staff is a bass clef with a key signature of one sharp (F#) and a 4/4 time signature, containing a bass line. The system is enclosed in a dashed-line box.

Handwritten musical score system 3. It consists of three staves. The top staff is a treble clef with a key signature of one sharp (F#) and a 4/4 time signature. It contains a melodic line with notes and rests. The middle staff is a bass clef with a key signature of one sharp (F#) and a 4/4 time signature, containing a bass line. The bottom staff is a bass clef with a key signature of one sharp (F#) and a 4/4 time signature, containing a bass line. The system is enclosed in a dashed-line box.

Handwritten musical notation for the first system. The treble clef staff contains a melody starting with a quarter rest, followed by quarter notes G4, A4, B4, C5, B4, A4, G4, F#4, E4, D4, C4. A slur covers the notes from G4 to C4, with a fermata over the final C4. The piano accompaniment is mostly empty, with some faint markings in the bass clef.

Handwritten musical notation for the second system. The treble clef staff contains a melody starting with a quarter rest, followed by quarter notes D4, E4, F#4, G4, A4, B4, C5, B4, A4, G4, F#4, E4, D4, C4. A slur covers the notes from D4 to C4, with a fermata over the final C4. The piano accompaniment has some notes in the bass clef, including a sharp sign and some rhythmic markings.

Handwritten musical notation for the third system. The treble clef staff contains a melody starting with a quarter rest, followed by quarter notes D4, E4, F#4, G4, A4, B4, C5, B4, A4, G4, F#4, E4, D4, C4. A slur covers the notes from D4 to C4, with a fermata over the final C4. The piano accompaniment has some notes in the bass clef, including a sharp sign and some rhythmic markings.

Handwritten musical notation for the first system, consisting of three staves. The top staff contains a melodic line with various notes and accidentals. The middle staff contains a rhythmic line with stems and flags. The bottom staff contains a bass line with notes and accidentals.

Handwritten musical notation for the second system, consisting of three staves. Similar to the first system, it features a melodic line, a rhythmic line, and a bass line.

Handwritten musical notation for the third system, consisting of three staves. The notation continues with melodic, rhythmic, and bass lines.

Teil (B)

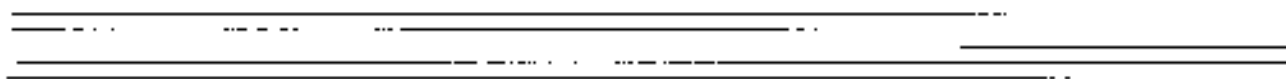
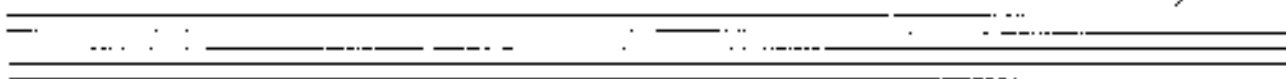
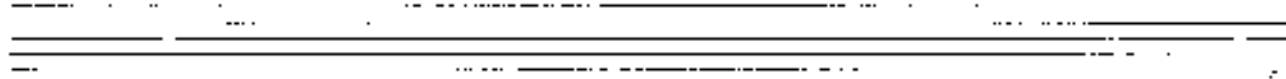
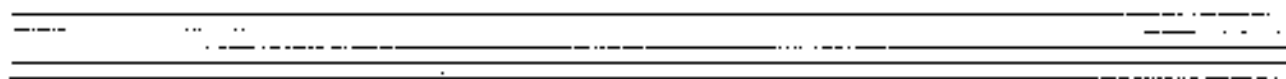
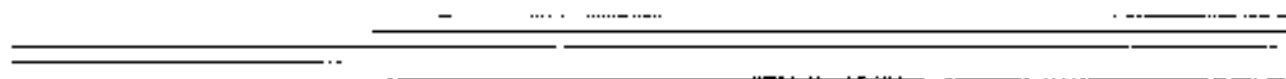
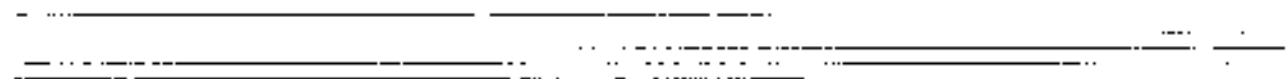
Teil C

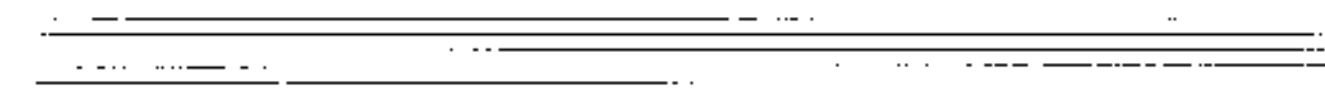
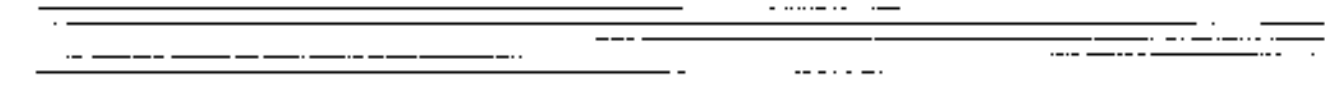
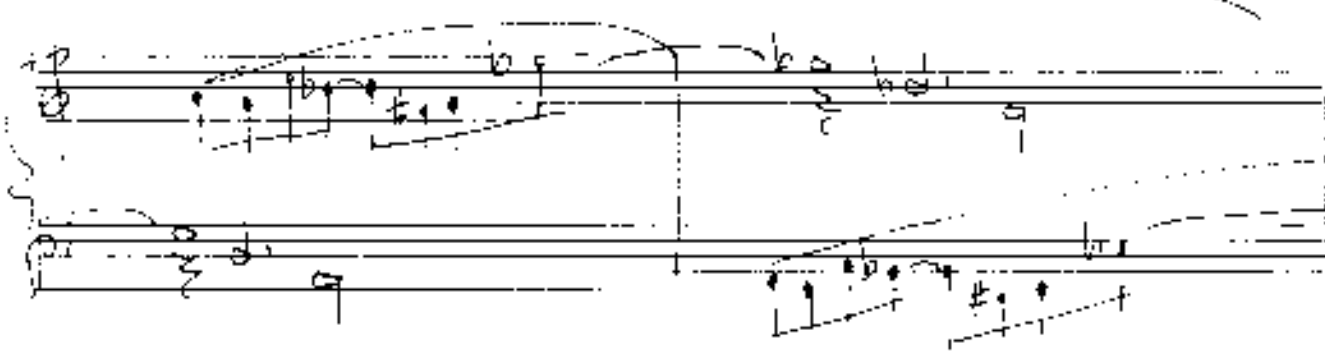
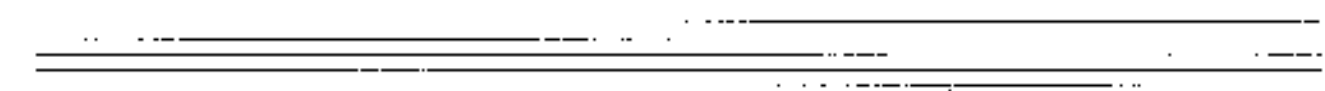
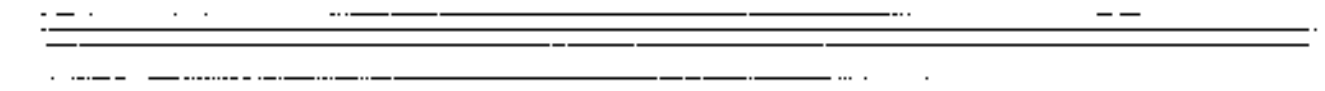
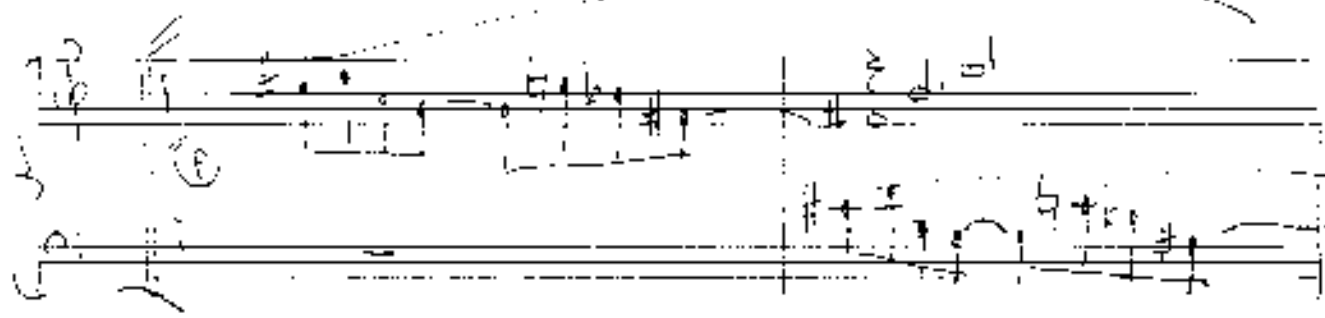
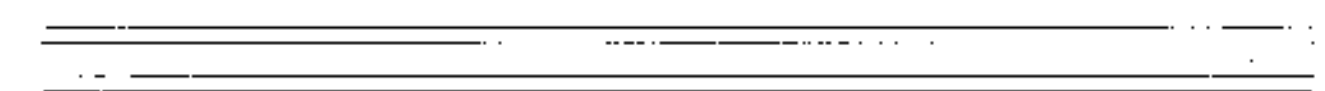
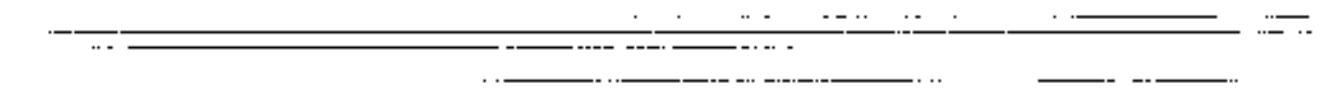
Allegro moder.

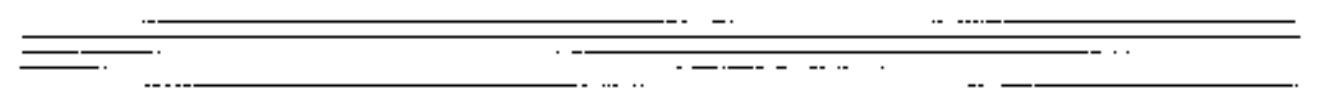
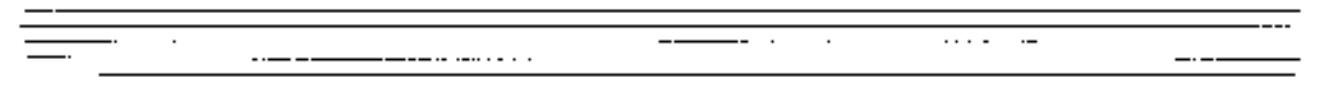
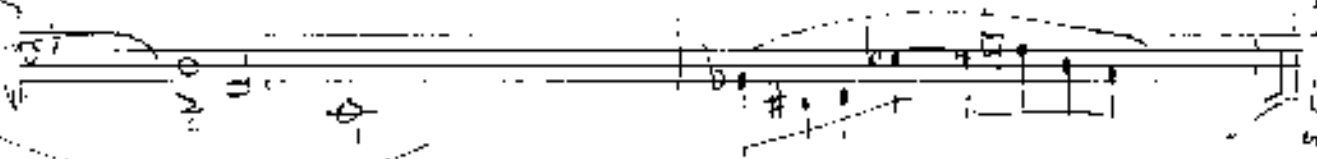
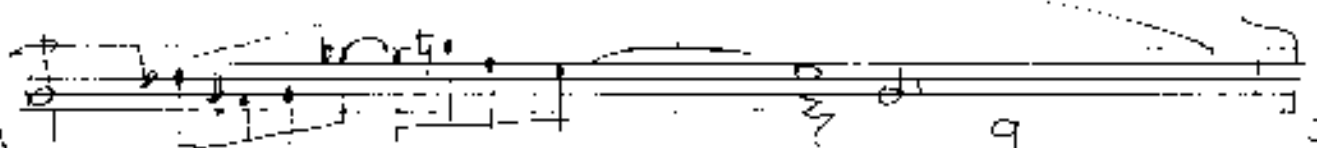
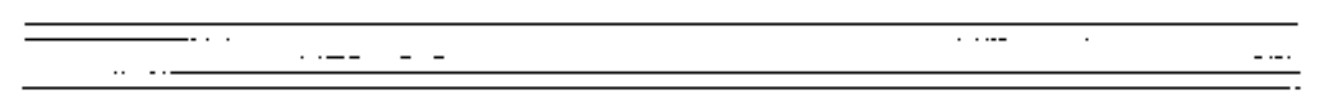
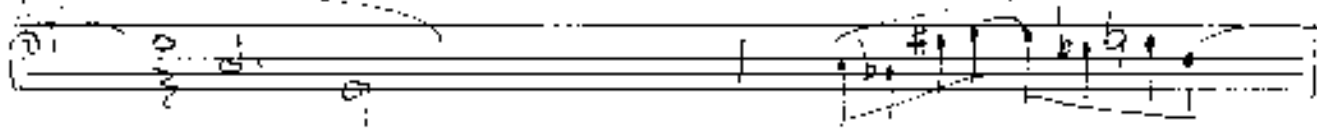
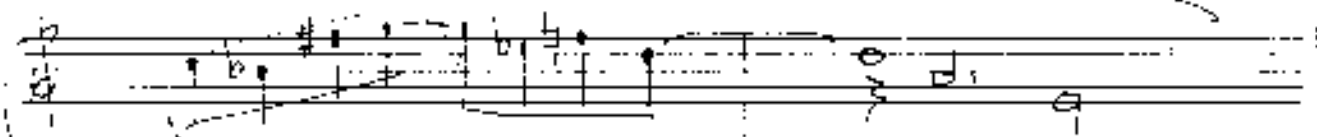
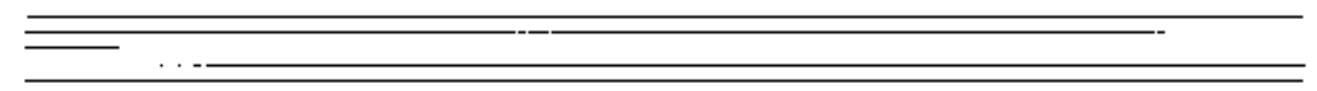
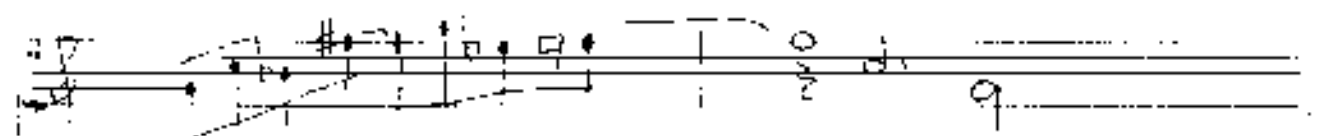
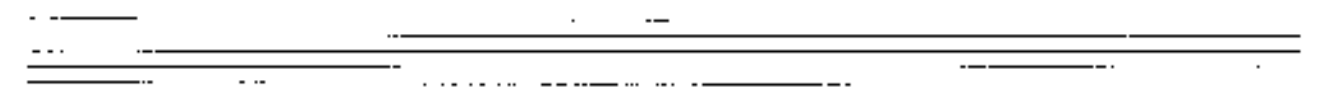
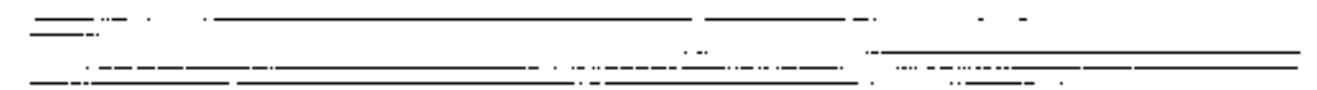
Handwritten musical notation for the first system. The top staff is in treble clef and contains a melodic line with notes, rests, and accidentals. The bottom staff is in bass clef and contains a bass line with notes and rests. A dynamic marking 'C' is written above the bass staff, and a circled 'p' is written below it. A fermata is placed over the final note of the first staff.

Handwritten musical notation for the second system. The top staff continues the melodic line with notes and rests. The bottom staff continues the bass line with notes and rests. A fermata is placed over the final note of the top staff.

Handwritten musical notation for the third system. The top staff features a more complex melodic line with notes, rests, and accidentals. The bottom staff continues the bass line with notes and rests. A fermata is placed over the final note of the top staff.







3x
D C
Teil
[C]
en.
FM

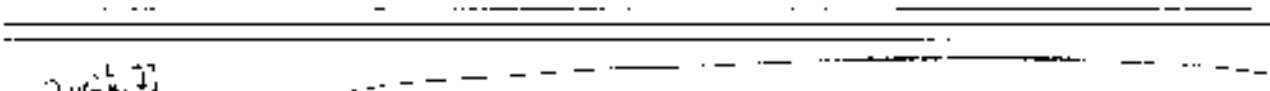
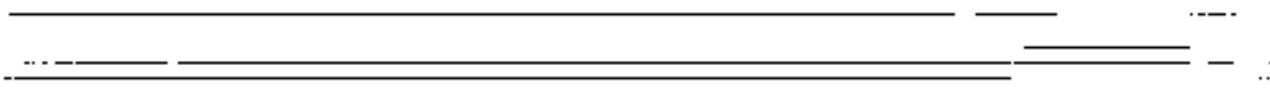
RESISTO

Teil 2

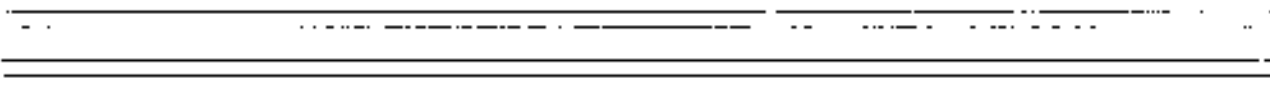
Handwritten musical notation for the first system. The treble staff begins with a treble clef and a key signature of one flat (B-flat). The bass staff begins with a bass clef and a key signature of one flat. The notation includes quarter notes, eighth notes, and slurs connecting notes across measures. There are some handwritten annotations, including a circled 'P' and a circled 'D' in the treble staff.

Handwritten musical notation for the second system. The treble staff begins with a treble clef and a key signature of one flat. The bass staff begins with a bass clef and a key signature of one flat. The notation includes quarter notes, eighth notes, and slurs connecting notes across measures.

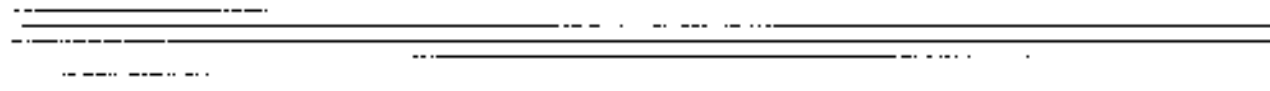
Handwritten musical notation for the third system. The treble staff begins with a treble clef and a key signature of one flat. The bass staff begins with a bass clef and a key signature of one flat. The notation includes quarter notes, eighth notes, and slurs connecting notes across measures.



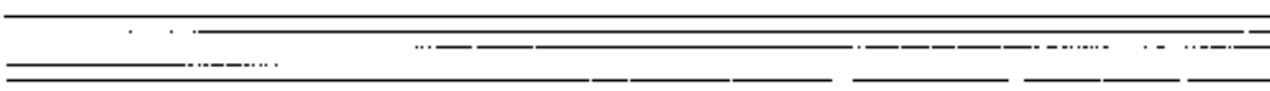
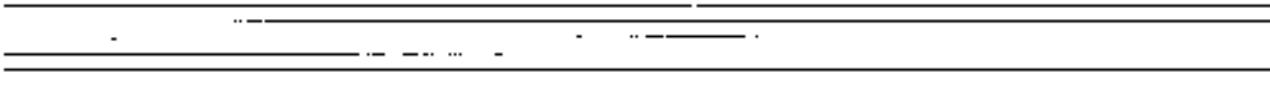
Handwritten musical notation on a grand staff. The upper staff contains a melodic line with notes and accidentals, including a circled 'F' at the beginning. The lower staff contains a bass line with notes and accidentals. A large dashed oval encompasses both staves.

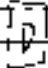
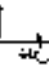
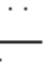


Handwritten musical notation on a grand staff. The upper staff contains a melodic line with notes and accidentals. The lower staff contains a bass line with notes and accidentals. A large dashed oval encompasses both staves.



Handwritten musical notation on a grand staff. The upper staff contains a melodic line with notes and accidentals. The lower staff contains a bass line with notes and accidentals. A large dashed oval encompasses both staves.



Ac. Teil   
Fine

Part

Teil

E

voll stark

Handwritten musical notation for the first system. It consists of three staves: treble, alto, and bass. The treble staff contains a series of notes with various accidentals (sharps, flats, naturals) and some triplets. The alto staff contains notes with accidentals and some triplets. The bass staff contains notes with accidentals. There are dynamic markings like 'ff' and 'f' and a 'v' marking. The notation is in a common time signature.

Handwritten musical notation for the second system. It consists of three staves: treble, alto, and bass. The treble staff contains notes with accidentals and triplets. The alto staff contains notes with accidentals and triplets. The bass staff contains notes with accidentals. There are dynamic markings like 'ff' and 'f' and a 'v' marking. The notation is in a common time signature.

Handwritten musical notation on three staves. The top staff contains a sequence of notes with accidentals and a triplet of eighth notes. The middle staff contains notes with accidentals and a triplet of eighth notes. The bottom staff contains a few notes with accidentals.

Handwritten musical notation on two staves. The top staff contains notes with accidentals and a triplet of eighth notes. The bottom staff contains notes with accidentals and a triplet of eighth notes. A box labeled "FIN" is present on the right side of the bottom staff, with an arrow pointing to the right.

mus. instr. rubato

Handwritten musical notation on a five-line staff. It begins with a treble clef and a key signature of one sharp (F#). The notes are mostly whole and half notes, with some rests. A bracket spans the first few notes.

Handwritten musical notation on a five-line staff. It starts with a treble clef and a key signature of one sharp. The notation includes a series of notes with stems, some marked with '+' signs, and a large slur covering the entire line.

Handwritten musical notation on a five-line staff. It features a treble clef and a key signature of one sharp. The notes are mostly whole notes, with a large slur spanning across the staff.

Two empty five-line musical staves.

Two empty five-line musical staves.

Handwritten musical notation on a five-line staff. It begins with a treble clef and a key signature of one sharp. The notation includes a series of notes with stems, some marked with '+' signs, and a large slur covering the entire line.

Handwritten musical notation on a five-line staff. It features a treble clef and a key signature of one sharp. The notes are mostly whole notes, with a large slur spanning across the staff.

Two empty five-line musical staves.

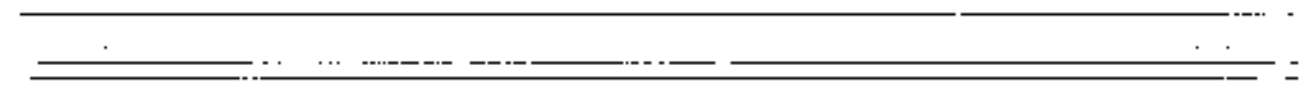
Two empty five-line musical staves.

Two empty five-line musical staves.

Two empty five-line musical staves.

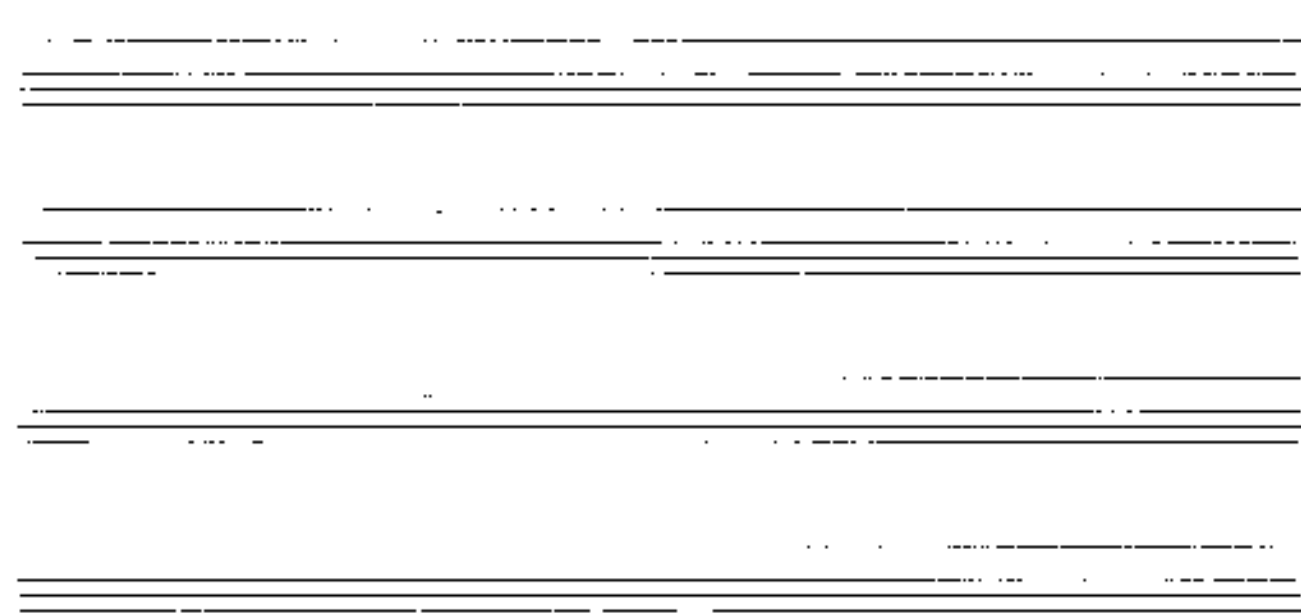
Two empty five-line musical staves.

Two empty five-line musical staves.



Handwritten musical score for the first system. It consists of three staves. The top staff is in treble clef with a key signature of one sharp (F#) and a common time signature (C). The middle staff is in bass clef with a common time signature (C). The bottom staff is in bass clef with a common time signature (C). The word "Presto" is written above the middle staff. The music features a melodic line in the middle staff and a bass line in the bottom staff. There are some handwritten annotations and markings.

Handwritten musical score for the second system. It consists of three staves. The top staff is in treble clef with a key signature of one sharp (F#) and a common time signature (C). The middle staff is in treble clef with a key signature of one sharp (F#) and a common time signature (C). The bottom staff is in bass clef with a common time signature (C). The music features a melodic line in the middle staff and a bass line in the bottom staff. There are some handwritten annotations and markings. At the end of the system, there are markings: "3.4", "D.C.", "Teil", "10", and "al Fine".



Tell F

sein Stück

Handwritten musical notation on a grand staff. The upper staff contains a melodic line with notes and accidentals. The lower staff contains a bass line with notes and accidentals. A circled "FINE" is written at the end of the piece.

Handwritten musical notation on a grand staff. The upper staff contains a melodic line with notes and accidentals. The lower staff contains a bass line with notes and accidentals.

Handwritten musical notation on a grand staff. The upper staff contains a melodic line with notes and accidentals. The lower staff contains a bass line with notes and accidentals. A circled "3" is written below the bass line.

Handwritten musical notation on a grand staff. The upper staff contains a melodic line with notes and accidentals. The lower staff contains a bass line with notes and accidentals. The text "2. x D.C. al Fine" is written at the end of the piece.