

Teile für große
Orgel
1970

Adolf Scherbaum

Notenheft



Teile für große Orgel

1970 Adolf Scherbaum



breit (

Teil ⑦

Handwritten musical score for the first system. The treble clef staff is in G major (one sharp) and 6/4 time. The melody consists of eighth and quarter notes. The bass staff contains figured bass notation with figures such as 6f, 4f, and various accidentals. The system is bracketed and includes a repeat sign.

Handwritten musical score for the second system. The treble clef staff is in G major (one sharp). The melody continues with quarter and eighth notes. The bass staff contains figured bass notation with figures such as #, #, and various accidentals. The system is bracketed and includes a repeat sign.

Handwritten musical score for the first system. It consists of three staves. The top staff is in treble clef and contains a sequence of notes: $\#d'$, $\#d'$, $\#d'$, $\#d'$, $\#d'$, $\#d'$, $\#d'$, $\#d'$, $\#d'$, $\#d'$. The middle staff is in bass clef and contains notes: $\#d'$, $\#d'$, $\#d'$, $\#d'$, $\#d'$, $\#d'$, $\#d'$, $\#d'$, $\#d'$, $\#d'$. The bottom staff is in bass clef and contains notes: $\#d'$, $\#d'$, $\#d'$, $\#d'$, $\#d'$, $\#d'$, $\#d'$, $\#d'$, $\#d'$, $\#d'$. The system is enclosed in a large blue bracket.

Handwritten musical score for the second system. It consists of three staves. The top staff is in treble clef and contains notes: $\#d'$, $\#d'$, $\#d'$, $\#d'$, $\#d'$, $\#d'$, $\#d'$, $\#d'$, $\#d'$, $\#d'$. The middle staff is in bass clef and contains notes: $\#d'$, $\#d'$, $\#d'$, $\#d'$, $\#d'$, $\#d'$, $\#d'$, $\#d'$, $\#d'$, $\#d'$. The bottom staff is in bass clef and contains notes: $\#d'$, $\#d'$, $\#d'$, $\#d'$, $\#d'$, $\#d'$, $\#d'$, $\#d'$, $\#d'$, $\#d'$. The system is enclosed in a large blue bracket.

Handwritten musical score for the third system. It consists of three staves. The top staff is in treble clef and contains notes: $\#d'$, $\#d'$, $\#d'$, $\#d'$, $\#d'$, $\#d'$, $\#d'$, $\#d'$, $\#d'$, $\#d'$. The middle staff is in bass clef and contains notes: $\#d'$, $\#d'$, $\#d'$, $\#d'$, $\#d'$, $\#d'$, $\#d'$, $\#d'$, $\#d'$, $\#d'$. The bottom staff is in bass clef and contains notes: $\#d'$, $\#d'$, $\#d'$, $\#d'$, $\#d'$, $\#d'$, $\#d'$, $\#d'$, $\#d'$, $\#d'$. The system is enclosed in a large blue bracket.

Handwritten musical notation for the first system. The treble clef is present. The key signature has one sharp (F#). The time signature is 7/8. The melody is written on a single staff with a slur over two measures. The bass staff contains whole rests. Handwritten annotations include a '7' above the first measure and a '7' above the second measure, with a circled '7' below the first measure.

Handwritten musical notation for the second system. The treble clef is present. The key signature has one sharp (F#). The melody is written on a single staff with a slur over two measures. The bass staff contains chords. Handwritten annotations include a '7' above the first measure and a '7' above the second measure.

Handwritten musical notation for the third system. The treble clef is present. The key signature has one sharp (F#). The melody is written on a single staff with a slur over two measures. The bass staff contains chords. Handwritten annotations include a '7' above the first measure and a '7' above the second measure.

Handwritten musical notation for the first system, featuring three staves with treble, middle, and bass clefs. The music includes various notes, rests, and accidentals, with a large blue bracket spanning across the staves.

Handwritten musical notation for the second system, featuring three staves with treble, middle, and bass clefs. The music includes various notes, rests, and accidentals, with a large blue bracket spanning across the staves.

Handwritten musical notation for the third system, featuring three staves with treble, middle, and bass clefs. The music includes various notes, rests, and accidentals, with a large blue bracket spanning across the staves. A box labeled "FIN" is visible in the top right corner.

Teil (B)

Handwritten musical score for the first system of 'Teil (B)'. It features a treble clef staff with a 6/4 time signature and a grand staff with piano (p) dynamics. The music includes a melodic line with notes like #d, d, d, a, g, d, bd and a complex bass line with many accidentals and ties.

Handwritten musical score for the second system of 'Teil (B)'. It continues the melodic and bass lines from the first system, with notes like #d, d, bd, g, d, d and similar complex bass line patterns.

Handwritten musical score for the third system of 'Teil (B)'. The melodic line continues with notes like d, d, d, d, d, d, d, d, d, d, d, d. The bass line features a rhythmic pattern of eighth and sixteenth notes with various accidentals.

Handwritten musical score for the first system, consisting of three staves. The top staff is in treble clef, the middle in alto clef, and the bottom in bass clef. The music features various notes, accidentals, and slurs across two measures.

Handwritten musical score for the second system, consisting of three staves. The notation is similar to the first system. To the right of the staves, the text "Klein" and "G.P." is written vertically.

(folgt Teil (A) ohne ::|| ul Fin.)

Teil ©

Alllegro (mod.)

Handwritten musical notation for the first system. It consists of a treble clef and a bass clef. The treble clef has a sharp sign (F#) at the beginning. The bass clef has a circled 'p' and a circled '4/4' below it. The notes in the treble clef are: G4, A4, B4, C5, B4, A4, G4, F#4, E4, D4. The bass clef has rests in both measures.

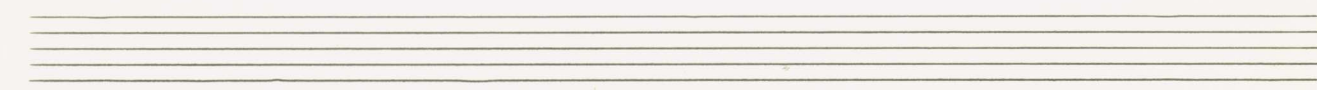
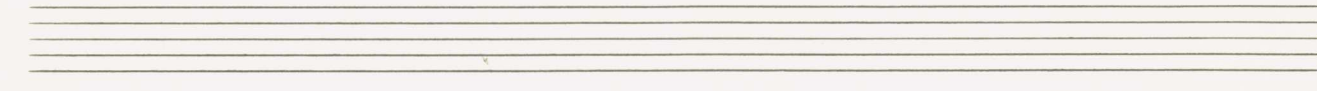
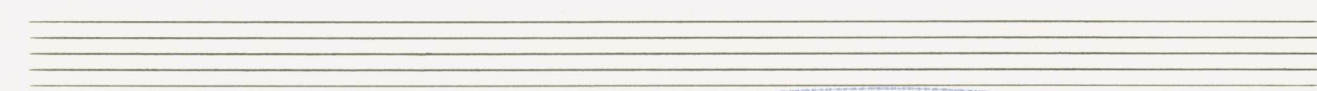
Handwritten musical notation for the second system. It consists of a treble clef and a bass clef. The treble clef has a sharp sign (F#) at the beginning. The notes in the treble clef are: G4, A4, B4, C5, B4, A4, G4, F#4, E4, D4. The bass clef has notes: G3, F#3, E3, D3, C3, B2, A2, G2.

Handwritten musical notation for the third system. It consists of a treble clef and a bass clef. The treble clef has a sharp sign (F#) at the beginning. The notes in the treble clef are: G4, A4, B4, C5, B4, A4, G4, F#4, E4, D4. The bass clef has notes: G3, F#3, E3, D3, C3, B2, A2, G2.

Handwritten musical notation for the first system. The system consists of two staves. The upper staff is in treble clef and contains a melodic line with notes and accidentals (flats and naturals) across four measures. The lower staff is in bass clef and contains a bass line with notes and accidentals, also across four measures. A large blue bracket spans the entire system.

Handwritten musical notation for the second system. The system consists of two staves. The upper staff is in treble clef and contains a melodic line with notes and accidentals (flats and naturals) across four measures. The lower staff is in bass clef and contains a bass line with notes and accidentals, also across four measures. A large blue bracket spans the entire system.

Handwritten musical notation for the third system. The system consists of two staves. The upper staff is in treble clef and contains a melodic line with notes and accidentals (flats and naturals) across four measures. The lower staff is in bass clef and contains a bass line with notes and accidentals, also across four measures. A large blue bracket spans the entire system. The word "FINE" is written in a circle at the end of the system.



Handwritten musical notation for the first system. The treble clef part begins with a sequence of notes: Bb, C, D, Eb, F, G, A, B. The bass clef part starts with a whole note chord of Bb and D, followed by a whole note chord of Bb and F. A vertical bar line separates the two measures. The second measure in both staves contains a whole note chord of D and F.

Handwritten musical notation for the second system. The treble clef part continues with notes: Bb, C, D, Eb, F, G, A, B. The bass clef part starts with a whole note chord of D and F, followed by a whole note chord of Bb and D. A vertical bar line separates the two measures. The second measure in both staves contains a whole note chord of D and F.

Handwritten musical notation for the third system. The treble clef part continues with notes: Bb, C, D, Eb, F, G, A, B. The bass clef part starts with a whole note chord of D and F, followed by a whole note chord of Bb and D. A vertical bar line separates the two measures. The second measure in both staves contains a whole note chord of D and F. The system concludes with a double bar line and the instruction "2. x".

2. x
 D. C
 Teil
 C
 al.
 Fin

PRESTO

Teil D

Handwritten musical notation for the first system. It consists of two staves: a treble clef staff and a bass clef staff. The treble staff begins with a circled 'p' (piano) dynamic marking. The music is written in a 2/4 time signature. The first measure contains a quarter note G4, a quarter note A4, and a quarter note B4. The second measure contains a quarter note C5, a quarter note B4, and a quarter note A4. The third measure contains a quarter note G4, a quarter note F4, and a quarter note E4. The fourth measure contains a quarter note D4, a quarter note C4, and a quarter note B3. A long blue slur covers the entire system.

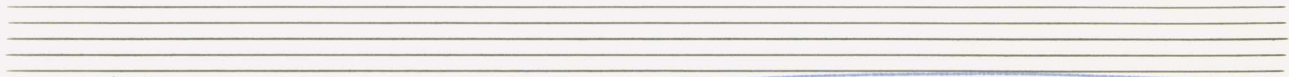
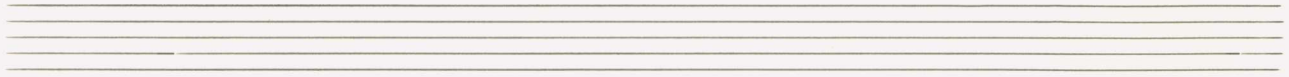
Handwritten musical notation for the second system. It consists of two staves: a treble clef staff and a bass clef staff. The treble staff begins with a circled 'p' (piano) dynamic marking. The music is written in a 2/4 time signature. The first measure contains a quarter note G4, a quarter note A4, and a quarter note B4. The second measure contains a quarter note C5, a quarter note B4, and a quarter note A4. The third measure contains a quarter note G4, a quarter note F4, and a quarter note E4. The fourth measure contains a quarter note D4, a quarter note C4, and a quarter note B3. A long blue slur covers the entire system.

Handwritten musical notation for the third system. It consists of two staves: a treble clef staff and a bass clef staff. The treble staff begins with a circled 'p' (piano) dynamic marking. The music is written in a 2/4 time signature. The first measure contains a quarter note G4, a quarter note A4, and a quarter note B4. The second measure contains a quarter note C5, a quarter note B4, and a quarter note A4. The third measure contains a quarter note G4, a quarter note F4, and a quarter note E4. The fourth measure contains a quarter note D4, a quarter note C4, and a quarter note B3. A long blue slur covers the entire system.

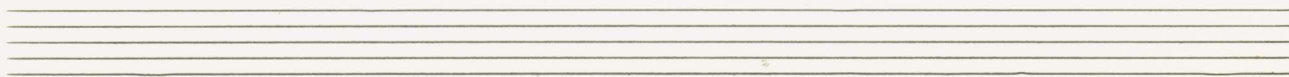
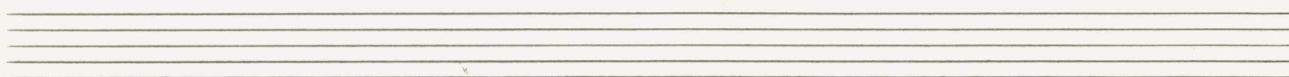
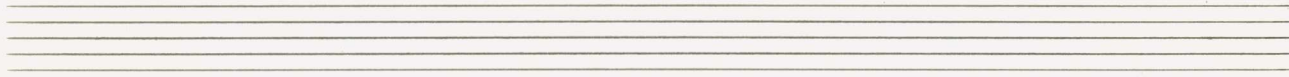
Handwritten musical notation for the first system. It consists of a grand staff with a treble clef on the upper staff and a bass clef on the lower staff. The key signature is one flat (B-flat), indicated by a 'b' symbol. A blue slur covers the entire system. The melody in the treble clef consists of four measures: the first measure has a quarter note on G4, the second on A4, the third on B4, and the fourth on C5. The bass clef accompaniment consists of quarter notes: G3, F3, E3, D3 in the first measure; G3, F3, E3, D3 in the second; G3, F3, E3, D3 in the third; and G3, F3, E3, D3 in the fourth.

Handwritten musical notation for the second system. It consists of a grand staff with a treble clef on the upper staff and a bass clef on the lower staff. The key signature is one flat (B-flat). A blue slur covers the entire system. The melody in the treble clef consists of four measures: the first measure has a quarter note on G4, the second on A4, the third on B4, and the fourth on C5. The bass clef accompaniment consists of quarter notes: G3, F3, E3, D3 in the first measure; G3, F3, E3, D3 in the second; G3, F3, E3, D3 in the third; and G3, F3, E3, D3 in the fourth.

Handwritten musical notation for the third system. It consists of a grand staff with a treble clef on the upper staff and a bass clef on the lower staff. The key signature is one flat (B-flat). A blue slur covers the entire system. The melody in the treble clef consists of four measures: the first measure has a quarter note on G4, the second on A4, the third on B4, and the fourth on C5. The bass clef accompaniment consists of quarter notes: G3, F3, E3, D3 in the first measure; G3, F3, E3, D3 in the second; G3, F3, E3, D3 in the third; and G3, F3, E3, D3 in the fourth. The system ends with a double bar line and a box containing the word "FINE".



Alto??



Handwritten musical notation for the first system. The treble clef staff contains a melodic line with notes G4, A4, B4, C5, B4, A4, G4, F4, E4, D4, C4. The bass clef staff contains a bass line with notes G2, A2, B2, C3, D3, E3, F3, G3, A3, B3, C4. A large slur covers the entire system, with two fermatas placed below the bass line.

Handwritten musical notation for the second system. The treble clef staff continues the melodic line with notes B4, C5, B4, A4, G4, F4, E4, D4, C4. The bass clef staff continues the bass line with notes G2, A2, B2, C3, D3, E3, F3, G3, A3, B3, C4. A large slur covers the entire system, with two fermatas placed below the bass line.

Handwritten musical notation for the third system. The treble clef staff concludes the melodic line with notes B4, C5, B4, A4, G4, F4, E4, D4, C4. The bass clef staff concludes the bass line with notes G2, A2, B2, C3, D3, E3, F3, G3, A3, B3, C4. A large slur covers the entire system, with two fermatas placed below the bass line. The system ends with a double bar line and a repeat sign.

Das Teil D al
Fine

breit

Teil E

voll Werk

The first system of the handwritten musical score consists of three staves. The top staff is in treble clef and contains a series of notes with various accidentals (sharps, flats, naturals) and a triplet of notes. The middle staff is in bass clef and contains notes with accidentals and a triplet. The bottom staff is in bass clef and contains a few notes with accidentals. A large blue slur covers the top two staves. A blue '4' is written on the left side of the bottom staff, and a blue sharp sign is written above it.

The second system of the handwritten musical score consists of three staves. The top staff is in treble clef and contains notes with accidentals and a triplet. The middle staff is in bass clef and contains notes with accidentals and a triplet. The bottom staff is in bass clef and contains notes with accidentals. A large blue slur covers the top two staves.

Handwritten musical notation for the first system, consisting of three staves. The top staff contains a series of notes with accidentals (sharps and naturals) and a triplet of notes. The middle staff contains similar notes with accidentals and a triplet. The bottom staff contains a few notes, including a sharp sign. A large blue bracket spans across the top two staves.

Handwritten musical notation for the second system, consisting of three staves. The top staff has notes with accidentals. The middle staff has notes with accidentals and some markings that look like parentheses. The bottom staff has notes with accidentals. A box labeled "FIN" is drawn on the right side of the middle staff, with an arrow pointing to the right.

ganz frei (rubato)

Handwritten musical score for the first system. It consists of three staves. The top staff has a treble clef and contains notes with a sharp sign (#) and a fermata. The middle staff has a bass clef and contains notes with a flat sign (b) and a fermata. The bottom staff has a bass clef and contains notes with a sharp sign (#) and a fermata. There are dynamic markings 'ff' (fortissimo) and 'Pizzato' (pizzicato). A vertical dashed line separates the first part from the second part, which features a long, sweeping melodic line across the top staff.

Handwritten musical score for the second system. It consists of three staves. The top staff has a treble clef and contains notes with a sharp sign (#) and a fermata. The middle staff has a bass clef and contains notes with a flat sign (b) and a fermata. The bottom staff has a bass clef and contains notes with a sharp sign (#) and a fermata. There are dynamic markings 'ff' (fortissimo) and 'Pizzato' (pizzicato). A vertical dashed line separates the first part from the second part, which features a long, sweeping melodic line across the top staff.

Handwritten musical score for the first system. It consists of three staves. The top staff is in treble clef with a key signature of two sharps (F# and C#). The middle staff is in alto clef. The bottom staff is in bass clef. The music includes notes, rests, and a 'Presto' marking. A large blue slur covers the middle staff across the system.

Handwritten musical score for the second system. It consists of three staves. The top staff is in treble clef, the middle in alto clef, and the bottom in bass clef. The system includes a repeat sign, dynamic markings such as '2.x', 'D.C.', and 'al Fine', and a boxed 'E' symbol. The music features notes, rests, and a large blue slur.

Teil F

sehr ruhig -

Handwritten musical notation for the first system. It features a treble clef and a bass clef. The time signature is 4/8. A piano (p) dynamic marking is present. The music consists of two staves with various notes and rests.

Handwritten musical notation for the second system, continuing the piece with two staves of music.

Handwritten musical notation for the third system, continuing the piece with two staves of music.

Handwritten musical notation for the first system. The treble clef staff contains notes with accidentals (flats and naturals) and a slur. The bass clef staff contains notes with accidentals and a slur. A circled "FINE" marking is present at the end of the system.

Handwritten musical notation for the second system. The treble clef staff contains a melodic line with slurs and ties. The bass clef staff contains notes with accidentals and a slur.

Handwritten musical notation for the third system. The treble clef staff contains a melodic line with a triplet of notes and a slur. The bass clef staff contains notes with accidentals and a slur. A "rit" marking is present above the treble staff.

Handwritten musical notation for the fourth system. The treble clef staff contains notes with accidentals and a slur. The bass clef staff contains notes with accidentals and a slur. The system ends with a double bar line and the instruction "2. x D.C. al Fine".