

Notenheft

Jazz Sonate
für

Flöte - 3 Posaunen

Schlagbass und Schlagwerk

1969 - 71

Adolf Scherbaum

(Mod. assai) Satz ①

Handwritten musical score for the first system, measures 1-4. The score is written on four staves. The top staff is a treble clef with a key signature of one sharp (F#). The second staff is a treble clef with a 4/4 time signature. The third staff is a bass clef with a 4/4 time signature. The bottom staff is a bass clef with a key signature of one sharp (F#). The music consists of four measures. The first measure has a circled 'p' dynamic marking. The second measure has a circled 'p' dynamic marking. The third measure has a circled 'p' dynamic marking. The fourth measure has a circled 'p' dynamic marking. The music is mostly rests, with some notes in the second and third measures.

Handwritten musical score for the second system, measures 5-8. The score is written on four staves. The top staff is a treble clef with a key signature of one sharp (F#). The second staff is a treble clef with a 4/4 time signature. The third staff is a bass clef with a 4/4 time signature. The bottom staff is a bass clef with a key signature of one sharp (F#). The music consists of four measures. The first measure has a circled '93' marking. The second measure has a circled '93' marking. The third measure has a circled '93' marking. The fourth measure has a circled '93' marking. The music is mostly rests, with some notes in the second and third measures.

Handwritten musical score for the first system. It consists of three staves. The top staff has a treble clef and contains several measures of music with notes and rests. A circled 'H' with an equals sign is written below the first measure. The middle staff has a bass clef and contains notes and rests. A circled 'B' is written below the first measure. The bottom staff has a bass clef and contains rests. A circled 'T' is written below the first measure. There are some handwritten annotations above the notes in the top staff, including '2 1' and '1 2'.

2

Handwritten musical score for the second system. It consists of three staves. The top staff has a treble clef and contains several measures of music with notes and rests. A circled 'H' with a slash is written below the first measure. The middle staff has a bass clef and contains notes and rests. A circled 'B' is written below the first measure. The bottom staff has a bass clef and contains notes and rests. A circled 'T' is written below the first measure. There are some handwritten annotations above the notes in the top staff, including '2' and '1'.

Handwritten musical score for the first system. It consists of four staves. The top staff is a flute melody in G major, starting with a dynamic marking *mf* and a slur over the first four notes. The second staff is a piano accompaniment with chords and a circled *p* dynamic marking. The third staff is a bass line with eighth notes and a circled *p* dynamic marking. The fourth staff shows a bass line with chords and a circled *p* dynamic marking. There are some handwritten annotations like a 'u' and a 'b' above the flute staff.

Handwritten musical score for the second system. It consists of four staves. The top staff continues the flute melody with a circled '3' in the top right corner. The second staff continues the piano accompaniment with chords and a circled *p* dynamic marking. The third staff continues the bass line with eighth notes and a circled *p* dynamic marking. The fourth staff continues the bass line with chords and a circled *p* dynamic marking. There are some handwritten annotations like a 'u' and a 'b' above the flute staff.

Handwritten musical score for the first system. It consists of four staves. The top staff is a treble clef with a key signature of two sharps (F# and C#). The melody begins with a series of eighth notes: F#4, G#4, A4, B4, C5, B4, A4, G#4, F#4, E4, D4, C4. There are various ornaments and slurs above the notes. The second staff is a bass clef with a key signature of one sharp (F#). It contains a piano accompaniment with notes like G2, F#2, E2, D2, C2, and rests. The third staff is a bass clef with a key signature of one sharp (F#), containing a piano accompaniment with notes like G2, F#2, E2, D2, C2, and rests. The fourth staff is a bass clef with a key signature of one sharp (F#), containing a piano accompaniment with notes like G2, F#2, E2, D2, C2, and rests.

Handwritten musical score for the second system. It consists of four staves. The top staff is a treble clef with a key signature of one sharp (F#). The melody continues with notes like G#4, A4, B4, C5, B4, A4, G#4, F#4, E4, D4, C4. There are various ornaments and slurs above the notes. The second staff is a bass clef with a key signature of one sharp (F#), containing a piano accompaniment with notes like G2, F#2, E2, D2, C2, and rests. The third staff is a bass clef with a key signature of one sharp (F#), containing a piano accompaniment with notes like G2, F#2, E2, D2, C2, and rests. The fourth staff is a bass clef with a key signature of one sharp (F#), containing a piano accompaniment with notes like G2, F#2, E2, D2, C2, and rests.

Handwritten musical score for the first system, consisting of five staves. The notation includes complex chords, dynamics such as f , pp , and f , and rhythmic markings like $\frac{6}{8}$ and $\frac{3}{4}$. There are also some handwritten annotations like $\frac{1}{2}$ and $\frac{3}{4}$ above notes.

4

Handwritten musical score for the second system, consisting of five staves. The notation includes dynamics such as fp and Hp , and the instruction "Block" with a circled "R". There are also some handwritten annotations like $\frac{1}{2}$ and $\frac{3}{4}$ above notes.

7

5

Choro

af

Rock (F#)

6

Blech (F#)

7

Flode (F#)

Handwritten musical score for the first system. The top staff contains a melody line with various accidentals (flats, naturals, sharps) and slurs. The second staff shows chords with stems and flags, including a circled 'F' below. The third staff contains rhythmic notation with stems and flags, including a circled '4' below. The fourth staff is mostly empty with some diagonal lines, including a circled 'F' below. A circled '8' is located at the end of the system.

Handwritten musical score for the second system. The top staff contains a melody line with complex rhythmic patterns, including slurs and accents. The second staff shows chords with stems and flags, including a circled 'F' below. The third staff contains rhythmic notation with stems and flags, including a circled '4' below. The fourth staff is mostly empty with some diagonal lines, including a circled 'F' below.

9

dir

D.C.

Handwritten musical score for measures 9-12. The score includes a vocal line with the lyrics "dir" and a piano accompaniment. The piano part features chords and a bass line with rhythmic notation. A circled "H" is present in the piano part.

10

Handwritten musical score for measures 13-16. The score includes a piano accompaniment with chords and a bass line with rhythmic notation. A circled "p" is present in the piano part.

10

12

The first system of the handwritten musical score consists of three staves. The top staff is in treble clef and contains a melodic line with various accidentals (sharps, flats, naturals) and a final note with a circumflex accent. The middle staff is in bass clef and contains a bass line with similar accidentals. The bottom staff is in alto clef and contains a rhythmic pattern of eighth notes. The system is divided into two measures by a vertical bar line.

The second system of the handwritten musical score also consists of three staves. The top staff is in treble clef and contains a melodic line with a circled 'H' symbol below the first measure. The middle staff is in bass clef and contains a bass line with a circled 'H' symbol below the first measure. The bottom staff is in alto clef and contains a rhythmic pattern with a circled 'H' symbol below the first measure. The system is divided into two measures by a vertical bar line.

Handwritten musical score for the first system. It consists of three staves. The top staff contains a melodic line with notes and rests, including a circled 'ff' dynamic marking. The middle staff contains a bass line with notes and rests. The bottom staff contains a rhythmic pattern with vertical lines and a '3' indicating a triplet. Above the top staff, there are handwritten notes: 'b 2/4', '(ff)', and a sequence of notes with accents: 'f b f f f f'.

Handwritten musical score for the second system. It consists of three staves. The top staff contains a melodic line with notes and rests, including a circled 'ff' dynamic marking. The middle staff contains a bass line with notes and rests. The bottom staff contains a rhythmic pattern with vertical lines and a '3' indicating a triplet. Above the top staff, there are handwritten notes: 'b 2/4', '(ff)', and a sequence of notes with accents: 'f b f f f f'.

Handwritten musical score for the first system. The top staff is for the flute, showing a complex melodic line with many accidentals and a large slur. The second staff contains chords and rhythmic markings. The third staff has a melodic line with slurs. The bottom staff features a bass line with triplets and other rhythmic notations.

Handwritten musical score for the second system. The top staff continues the flute line with chromatic patterns. The second staff shows chords and slurs. The third staff has a melodic line with slurs. The bottom staff features a bass line with slurs and other rhythmic markings.

14

15

Z. + D. C.
al
φ

(sempre diu) (4x)

CODA

Handwritten musical score for the first system, consisting of four staves. The notation includes various notes, rests, and dynamic markings. The first staff has a circled 'f' and a circled '4'. The second staff has a circled 'f' and a circled '4'. The third staff has a circled 'f' and a circled '4'. The fourth staff has a circled 'f' and a circled '4'. There are also some handwritten annotations and symbols throughout the system.

Handwritten musical score for the second system, consisting of four staves. The notation includes various notes, rests, and dynamic markings. The first staff has a circled 'f' and a circled '4'. The second staff has a circled 'f' and a circled '4'. The third staff has a circled 'f' and a circled '4'. The fourth staff has a circled 'f' and a circled '4'. There are also some handwritten annotations and symbols throughout the system.

Handwritten musical score for the first system, consisting of four staves. The notation includes various notes, rests, and dynamic markings such as *pp* and *p*. The first staff has a circled *pp* marking. The second staff has a circled *p* marking. The third staff has a circled *pp* marking. The fourth staff has a circled *pp* marking. There are also some handwritten annotations like '3' and '4' near the notes.

lupa

Handwritten musical score for the second system, consisting of four staves. The notation includes notes, rests, and dynamic markings such as *ppp* and *pp*. The first staff has a circled *ppp* marking. The second staff has a circled *pp* marking. The third staff has a circled *pp* marking. The fourth staff has a circled *pp* marking. There are also some handwritten annotations like '3' and '4' near the notes.

Satz 2

Texte

Handwritten musical score for the first system, measures 1-3. The score is written on five staves. The top staff is a treble clef with a key signature of one flat (B-flat). The second staff is a bass clef with a key signature of one flat. The third staff is a bass clef with a key signature of one flat. The fourth and fifth staves are bass clefs with a key signature of one flat. The music features various notes, rests, and dynamic markings. A circled 'p' is present in the first measure of the top staff, and another circled 'pp' is in the first measure of the third staff. A circled 'pp' is also present in the first measure of the fifth staff. There are also some handwritten annotations like 'r n n' in the second staff.

Handwritten musical score for the second system, measures 4-6. The score is written on five staves. The top staff is a treble clef with a key signature of one flat. The second staff is a bass clef with a key signature of one flat. The third staff is a bass clef with a key signature of one flat. The fourth and fifth staves are bass clefs with a key signature of one flat. The music features various notes, rests, and dynamic markings. There are also some handwritten annotations like 'r n n' in the second staff.

Handwritten musical score for the first system. The top staff contains a flute melody with various ornaments and slurs. The piano accompaniment is written in the two staves below, with chords and rhythmic markings. A drum set part is indicated by the notation 'Hp ='. The system concludes with a circled number '10'.

Handwritten musical score for the second system. It continues the flute melody and piano accompaniment from the first system. The drum set part is again indicated by 'Hp ='. The system ends with a dynamic marking 'fp' and a fermata-like symbol.

Handwritten musical score for the first system, consisting of five staves. The notation includes various notes, rests, and dynamic markings. The first staff has a circled 'p' and a '20' above it. The second staff has a circled 'p' and a '20' above it. The third staff has a circled 'p' and a '20' above it. The fourth staff has a circled 'p' and a '20' above it. The fifth staff has a circled 'p' and a '20' above it.

Handwritten musical score for the second system, consisting of five staves. The notation includes various notes, rests, and dynamic markings. The first staff has a circled 'p' and a '20' above it. The second staff has a circled 'p' and a '20' above it. The third staff has a circled 'p' and a '20' above it. The fourth staff has a circled 'p' and a '20' above it. The fifth staff has a circled 'p' and a '20' above it.

2

Handwritten musical score for the first system. The top staff is for the flute, showing a trill-like figure. The middle staff is for the piano, with chords and dynamics like $f =$. The bottom staff is for the bass, with a walking bass line and dynamics like f .

Handwritten musical score for the second system. The top staff is for the flute, showing a melodic phrase. The middle staff is for the piano, with chords and dynamics like $f =$. The bottom staff is for the bass, with a walking bass line and dynamics like f . There are circled markings in the piano and bass staves.

Handwritten musical score for the first system. The top staff is in treble clef and contains complex rhythmic patterns with many beamed notes and rests. The bottom staff is in bass clef and contains notes and rests. There are several handwritten annotations: 'b b#', 'b b#!', and 'Hp = 1. 2 1 3'. A circled '3' is written at the end of the system.

Handwritten musical score for the second system. The top staff is in treble clef and contains notes and rests. The bottom staff is in bass clef and contains notes and rests. There are several handwritten annotations: 'dir >', 'mf >', and 'pp'. A circled '3' is written at the end of the system.

Handwritten musical score for the first system, consisting of four staves. The notation includes notes, rests, and dynamic markings. A circled 'P3' is written in the first measure of the top staff. A circled 'P1' is written in the second measure of the second staff. The word 'Gere...' is written in the third measure of the second staff with an arrow pointing to the right. There are also some handwritten annotations and arrows on the bottom two staves.

4

Handwritten musical score for the second system, consisting of four staves. The notation includes notes, rests, and dynamic markings. A circled 'P' is written in the first measure of the top staff. A circled 'P' is written in the second measure of the second staff. A circled 'P' is written in the third measure of the second staff. A circled 'P' is written in the fourth measure of the second staff. A circled 'P' is written in the first measure of the bottom staff. The dynamic marking 'f' is written in the third measure of the second staff and the fourth measure of the bottom staff.

Handwritten musical score for the first system, consisting of four staves. The notation includes various rhythmic values, slurs, and ties. A circled plus sign is present in the first measure of each staff. The bottom staff contains a sequence of rhythmic markings: 9', 9', 27, 9', 2, 9', 2.

Handwritten musical score for the second system, consisting of four staves. The notation includes various rhythmic values, slurs, and ties. A circled plus sign is present in the first measure of each staff. The bottom staff contains a sequence of rhythmic markings: 9', 9', 27, 9', 2, 9', 2.



Handwritten musical score for the first system, consisting of five staves. The top staff contains a circled number 5. The second staff has a circled number 3 and a circled sharp sign (#). The third staff has a circled sharp sign (#). The fourth and fifth staves have circled sharp signs (#) and rhythmic notation. The system is divided into four measures by vertical bar lines.

Handwritten musical score for the second system, consisting of two staves. The top staff contains circled text: "dim" and "poco rit", followed by a circled number 6. The bottom staff contains a circled sharp sign (#).

Handwritten musical score for the third system, consisting of four staves. The top staff has a circled number 6 and circled text "2-t", "p.c.", and "al". The second staff has circled text "Hp=" and a circled "p". The third staff has circled text "pp". The system is divided into four measures by vertical bar lines.

♩ CODA.

(ev. mit + dir)

Handwritten musical score for the first system, consisting of four staves. The top staff contains notes with dynamic markings *fp* and *pp*. The second staff has notes with dynamic markings *pp* and *mp*. The third and fourth staves contain rhythmic patterns and notes. A circled *p* is written below the third staff. A large bracket spans across the top of the system.

Handwritten musical score for the second system, consisting of four staves. The top staff has notes with dynamic markings *pp* and *mp*, and includes the word *frei* above it. The second staff has notes with dynamic markings *pp* and *mp*. The third and fourth staves contain notes and rests. A circled *frei* is written to the right of the top staff. A large bracket spans across the top of the system.

Satz (3)

Presto

Schlagwerk Solo ~~_____~~ *cresc.*

f (circled)

(1)

(p) (circled)

(p) (circled)

(p) (circled)

Handwritten musical score for the first system, measures 23-26. The system consists of four staves. The top staff contains a melodic line with a circled '23' at the beginning and a circled '24' above the staff. The second staff contains a bass line with a circled '25' above it. The third and fourth staves contain rhythmic accompaniment. A circled '26' is located at the end of the system.

Handwritten musical score for the second system, measures 27-30. The system consists of four staves. The top staff contains a melodic line with a circled '27' above it. The second staff contains a bass line with a circled '28' above it. The third and fourth staves contain rhythmic accompaniment. A circled '29' is located at the end of the system.

Handwritten musical score for the third system, measures 31-34. The system consists of four staves. The top staff contains a melodic line with a circled '31' above it. The second staff contains a bass line with a circled '32' above it. The third and fourth staves contain rhythmic accompaniment. A circled '33' is located at the end of the system.

3

4

Flöte

5

6

Handwritten musical score for measures 7 and 8. Measure 7 is marked with a circled '7' and includes a circled '23'. Measure 8 is marked with a circled '8' and contains the handwritten note "(letzter 5 Takte modulars)".

Handwritten musical score for measures 9 and 10. Measure 9 is marked with a circled '9' and includes a circled '23'. Measure 10 is marked with a circled '10' and contains the handwritten note "(letzter 5 Takte modulars)".

22

Handwritten musical score for measures 22-25. The score is written on four staves. The top staff is in treble clef and contains a circled measure number '22'. The second staff is in bass clef. The third and fourth staves are in bass clef and contain rhythmic notation with slurs and accents. There are some handwritten annotations like 'mf' and 'f'.

23

Handwritten musical score for measures 23-26. The score is written on four staves. The top staff is in treble clef and contains a circled measure number '23'. The second staff is in bass clef. The third and fourth staves are in bass clef and contain rhythmic notation with slurs and accents. There are some handwritten annotations like 'mf' and 'f'.

31

Handwritten musical score for the first system, consisting of five staves. The top staff is in treble clef with a key signature of one sharp (F#) and a 9/8 time signature. The second staff is in bass clef and contains complex chordal structures with dynamic markings such as f and mf . The third staff is in bass clef with a melodic line and a f dynamic marking. The fourth and fifth staves are in bass clef and contain rhythmic patterns with f dynamic markings.

(B) CODA

Handwritten musical score for the second system, consisting of five staves. The top staff is in treble clef with a melodic line. The second staff is in bass clef with notes and rests, including circled symbols. The third staff is in bass clef with notes and rests, also including circled symbols. The fourth and fifth staves are in bass clef with rhythmic patterns and circled symbols.

Handwritten musical score for the first system, measures 1-4. The score is written on four staves. The top staff is for the flute, showing eighth and sixteenth notes with various accidentals. The second staff is for the piano, with chords and dynamics markings: *hp*, *f*, *ffp*, and *f*. The third staff is for the bass, with chords and dynamics markings: *fp*. The bottom staff shows a bass line with chords and dynamics markings: *fp*.

Handwritten musical score for the second system, measures 5-8. The score is written on four staves. The top staff is for the flute, showing eighth and sixteenth notes with various accidentals. The second staff is for the piano, with chords and dynamics markings: *hp*, *f*, *hp*, and *f*. The third staff is for the bass, with chords and dynamics markings: *fp*. The bottom staff shows a bass line with chords and dynamics markings: *fp*. A circled number "14" is in the top right corner.

Handwritten musical score for the first system, consisting of four staves. The top staff contains a melodic line with eighth and sixteenth notes, some beamed together, and a fermata over the final notes. The second staff shows a bass line with a whole note chord marked $\frac{0}{8}$ and a fermata. The third staff contains a bass line with eighth notes and dynamic markings $fp =$, f , ff , and f . The bottom staff shows a bass line with eighth notes and dynamic markings fp and f .

Handwritten musical score for the second system, consisting of four staves. The top staff contains a melodic line with eighth and sixteenth notes, some beamed together, and a fermata over the final notes. The second staff shows a bass line with a whole note chord marked $\frac{0}{b8}$ and a fermata. The third staff contains a bass line with eighth notes and dynamic markings $fp =$, f , ff , and f . The bottom staff shows a bass line with eighth notes and dynamic markings $fp =$ and $f =$. There are circled numbers 15 and 17 in the right margin.

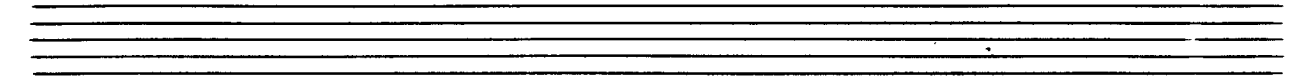
16

Solo

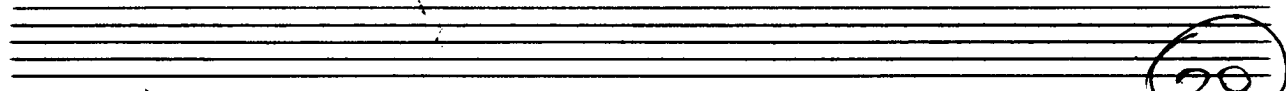
17

Handwritten musical score for measures 18-21. The score is written on four staves. The key signature is one sharp (F#). Measure 18 is circled in the top right corner. The notation includes notes, rests, and dynamic markings such as *p* and *pp*. There are some scribbles in the lower staves of measures 20 and 21.

Handwritten musical score for measures 22-25. The score is written on four staves. Measure 22 is circled in the top right corner. The notation includes notes, rests, and dynamic markings such as *pp*. The word "Solo" is written above the second staff in measure 22. There are some scribbles in the lower staves of measures 23 and 24.



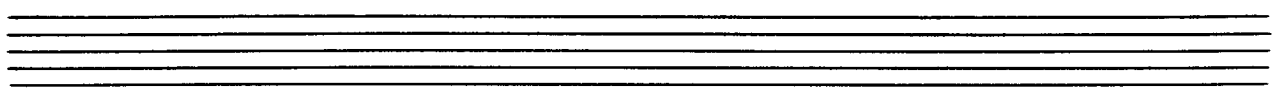
Handwritten musical notation for the first system. It consists of five staves. The top two staves are mostly empty with some horizontal lines. The third staff contains handwritten notes: $9\flat 9\sharp 9\flat 9$, $9\flat 9 9\sharp 9$, $9\sharp 9 9 9$, and $9\sharp 9 9 9$. The fourth staff contains a circled symbol \oplus . The fifth staff contains a circled symbol \ominus and some vertical lines.



20

Handwritten musical notation for the second system. It consists of five staves. The top two staves are mostly empty with some horizontal lines. The third staff contains handwritten notes: $9\flat 9 9 9$, $9\flat 9 9$, $9\sharp 9 9$, and $9\flat 9 9$. The fourth staff contains a circled symbol \oplus and the word "COPD". The fifth staff contains a circled symbol \ominus and the word "COPD".

$\angle f =$



(mod auel.)

♩ CODA (4+) (F2ote 2++4+ (oktave höher))

Bass

Handwritten musical score for the first system, featuring five staves. The bottom staff contains a melodic line with the word "Solo" written above it. The rest of the system is mostly empty with some light scribbles.

Handwritten musical score for the second system, featuring five staves. The bottom staff contains a melodic line with a circled "23" and a sharp sign. The rest of the system is mostly empty with some light scribbles.