

Sonate für
Klavier

1971

Notenheft



SONATE

FÜR KLAVIER

1971 (Wien) August 1971

Adolf Scherbaum

feil [1]

Claro (♩)

(Mysterioso)

Op. 13
pp
♩

♯

♭

Ⓟ

Handwritten musical notation for the first system. The treble clef part begins with a circled 'f' dynamic marking. The melody consists of four quarter notes, each with an accent (^) above it: G#4, A4, B4, and C5. The bass clef part provides accompaniment with chords and rests.

Handwritten musical notation for the second system. The treble clef part continues with four quarter notes, each with an accent (^) above it: D5, E5, F5, and G5. The bass clef part continues with accompaniment.

Handwritten musical notation for the third system. The treble clef part concludes with a quarter note G5 with an accent (^) above it. The bass clef part concludes with a quarter note G4 with an accent (^) above it. The system ends with a double bar line.

perante

Handwritten musical notation for the first system. The system consists of two staves. The upper staff is in treble clef with a 4/4 time signature. It contains a series of chords with accents above them. The lower staff is in bass clef and contains a bass line with a circled '8' and a sharp sign. The system concludes with a double bar line and a fermata.

Handwritten musical notation for the second system. The system consists of two staves. The upper staff is in treble clef with a 4/4 time signature. It contains a series of chords with accents above them. The lower staff is in bass clef and contains a bass line with a circled '8' and a sharp sign. The system concludes with a double bar line and a fermata.

Handwritten musical notation for the third system. The system consists of two staves. The upper staff is in treble clef with a 4/4 time signature. It contains a series of chords with accents above them. The lower staff is in bass clef and contains a bass line with a circled '8' and a sharp sign. The system concludes with a double bar line and a fermata.

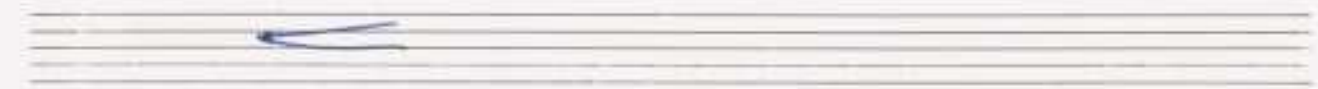
Handwritten musical notation for the fourth system. The system consists of two staves. The upper staff is in treble clef with a 4/4 time signature. It contains a series of chords with accents above them. The lower staff is in bass clef and contains a bass line with a circled '8' and a sharp sign. The system concludes with a double bar line and a fermata.

Handwritten musical notation for the first system. The treble clef staff begins with a circled sharp sign (#) followed by an equals sign. The melody consists of several notes with accents (^) and slurs. The bass clef staff contains an 8-measure rest (8) and several chords, including a triad with a flat and a chord with a sharp and a flat.

Handwritten musical notation for the second system. The word "poco più" is written above the treble clef staff. The treble clef staff contains a circled sharp sign (#) and a comma. The bass clef staff features several chords with flats and a circled sharp sign (#) at the end of the system.

Handwritten musical notation for the third system. The word "sehr ruhig" is written above the treble clef staff. The treble clef staff has a circled sharp sign (#) and a wavy line above it. The bass clef staff contains chords with flats and a circled sharp sign (#) at the beginning.

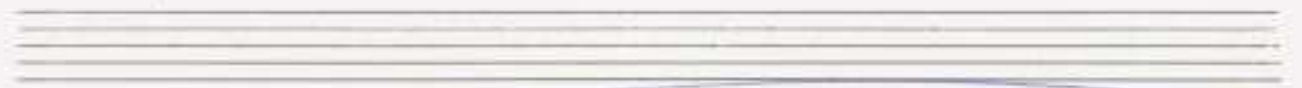
Handwritten musical notation for the fourth system. The treble clef staff has a circled sharp sign (#) and a wavy line above it. The bass clef staff contains chords with flats and a circled sharp sign (#) at the beginning.



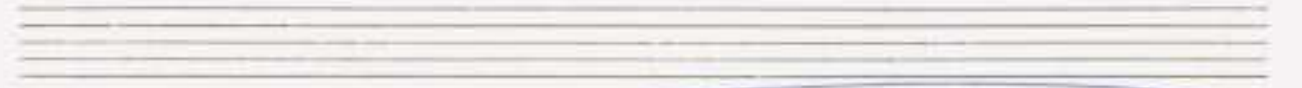
Handwritten musical notation for the first system. The right hand (RH) plays a sequence of notes: $\sharp\sharp'$, \sharp' , \sharp' , \sharp' . The left hand (LH) has a whole rest in the first measure, followed by two measures of chords. The first LH chord is \sharp (F#), and the second is \sharp (F#). A circled pp dynamic marking is present in the first measure. The word "(leicht)" is written below the first measure. The word "Ped." is written below the LH staff.



Handwritten musical notation for the second system. The RH plays notes: b , b , \sharp' , \sharp' . The LH has a whole rest in the first measure, followed by two measures of chords. The first LH chord is b (Bb), and the second is b (Bb). A circled p dynamic marking is present in the first measure.



Handwritten musical notation for the third system. The RH plays notes: $\sharp\sharp'$, \sharp' , \sharp' , \sharp' . The LH has a whole rest in the first measure, followed by two measures of chords. The first LH chord is b (Bb), and the second is \sharp (F#). A circled p dynamic marking is present in the first measure. The word "Pedal" is written below the LH staff.



Handwritten musical notation for the fourth system. The RH plays notes: b , b , \sharp' , \sharp' . The LH has a whole rest in the first measure, followed by two measures of chords. The first LH chord is b (Bb), and the second is \sharp (F#). A circled f dynamic marking is present in the first measure.

(poco rit)

Maestoso (♩) (aber nicht schleppend)

Handwritten musical notation for the first system. The right hand has a whole rest followed by a melodic phrase with a slur and a fermata. The left hand has a bass clef, a key signature of two flats, and a series of chords.

Handwritten musical notation for the second system. The right hand continues the melodic line with slurs and accents. The left hand continues with chords.

Handwritten musical notation for the third system. The right hand has a melodic line with slurs and accents. The left hand has chords.

Handwritten musical notation for the fourth system. The right hand has a melodic line with slurs and accents. The left hand has chords.

Handwritten musical notation for the first system, featuring a treble clef and a bass clef. The treble clef staff contains several chords with accidentals (flats and sharps) and some notes with stems. The bass clef staff contains a series of chords. There are some handwritten annotations above the treble clef staff, including a circled '8' and some arrows.

Handwritten musical notation for the second system, featuring a treble clef and a bass clef. The treble clef staff contains several chords with accidentals and some notes with stems. The bass clef staff contains a series of chords. There are some handwritten annotations, including a circled '8', a circled 'CODA', and the instruction '(poco rit - - -'.

Handwritten musical notation for the third system, featuring a treble clef and a bass clef. The treble clef staff contains several chords with accidentals and some notes with stems. The bass clef staff contains a series of chords. There are some handwritten annotations, including a circled '8', the instruction 'sehr breit (Leute)', and '(rit)'.

Handwritten musical notation for the fourth system, featuring a treble clef and a bass clef. The treble clef staff contains several chords with accidentals and some notes with stems. The bass clef staff contains a series of chords. There are some handwritten annotations, including a circled 'dim', the instruction 'sehr langsam (dünster)', and '>'.

Handwritten musical score for two staves. The top staff contains a melodic line with notes and accidentals, starting with a circled 'P' and an accent (>). The bottom staff contains a bass line with notes and accidentals. The word "agit..." is written above the top staff. The dynamic marking "pp" is written below the top staff.

Handwritten musical score for two staves. The top staff contains a melodic line with notes and accidentals, starting with a circled 'P' and an accent (>). The bottom staff contains a bass line with notes and accidentals. The word "attaca" is written above the top staff. The dynamic marking "ppp" is written below the bottom staff.

Allegro agitato (cresc.) (sempre cresc.)

Handwritten musical score for two staves. The top staff contains a melodic line with notes and accidentals, starting with a circled 'ppp' and an accent (>). The bottom staff contains a bass line with notes and accidentals. The dynamic marking "ppp" is written below the top staff.

sempre cresc.

Handwritten musical notation for the first system, measures 1-3. The right hand has a melodic line with slurs and accents, and the left hand has a bass line with chords and a fermata in the third measure.

Handwritten musical notation for the second system, measures 4-6. The right hand has a melodic line with slurs and accents, and the left hand has a bass line with chords and a fermata in the sixth measure.

Handwritten musical notation for the third system, measures 7-9. The right hand has a melodic line with slurs and accents, and the left hand has a bass line with chords and a fermata in the ninth measure.

Handwritten musical notation for the fourth system, measures 10-12. The right hand has a melodic line with slurs and accents, and the left hand has a bass line with chords and a fermata in the twelfth measure.

Handwritten musical notation for the first system. The treble clef contains a circled 'F' and a melodic line with sharps. The bass clef contains complex chordal structures with various accidentals and a circled 'F'.

Handwritten musical notation for the second system. The treble clef contains a circled 'F#' and a melodic line. The bass clef contains a melodic line and complex chords with various accidentals.

Handwritten musical notation for the third system. The treble clef contains a melodic line with various accidentals. The bass clef contains complex chords with various accidentals. The instruction "Presto (auf 1)" is written above the staff, and "Ped." is written below the staff with a circled 'F#'.

Handwritten musical notation for the fourth system. The treble clef contains a melodic line. The bass clef contains a simple chordal structure. The instruction "Ped." is written below the staff.

Handwritten musical notation for the first system. The treble clef staff contains notes with accidentals (flats and naturals) and a slur. The bass clef staff contains notes with accidentals and a 'Ped.' marking. A right-pointing arrow is present in the bass staff.

Handwritten musical notation for the second system. The treble clef staff contains notes with accidentals and a slur. The bass clef staff contains notes with accidentals and a 'Ped.' marking.

Handwritten musical notation for the third system. The treble clef staff contains notes with accidentals and a slur. The bass clef staff contains notes with accidentals and a 'Ped.' marking. A right-pointing arrow is present in the bass staff.

drängend!

Handwritten musical notation for the fourth system, marked *drängend!*. The treble clef staff contains notes with accidentals and a slur. The bass clef staff contains notes with accidentals and a 'Ped.' marking.

(Cluster) Schreibung

Handwritten musical notation for the first system. The treble staff contains a wavy line with a right-pointing arrow above it, and a few notes. The bass staff contains several notes with stems pointing downwards.

Handwritten musical notation for the second system. The treble staff contains a wavy line with a right-pointing arrow above it, and a few notes. The bass staff contains several notes with stems pointing downwards.

apparicato

(d)

Handwritten musical notation for the third system. The treble staff has a circled "III" and a note with a sharp sign. The bass staff has a "Ped." marking and notes with sharp signs. There are various accidentals and slurs throughout.

Handwritten musical notation for the fourth system. The treble staff has notes with slurs and accents. The bass staff has notes with slurs and accents.

Handwritten musical notation for the first system. The treble clef staff contains complex chords with accidentals (sharps and naturals) and slurs. The bass clef staff shows a key signature of one flat (B-flat) and a common time signature (C). The system concludes with a double bar line and a fermata.

Pod.

Handwritten musical notation for the second system. The treble clef staff contains chords with accidentals and slurs. The bass clef staff shows a key signature of one flat (B-flat) and a common time signature (C). The system concludes with a double bar line and a fermata.

Handwritten musical notation for the third system. The treble clef staff contains chords with accidentals and slurs. The bass clef staff shows a key signature of one flat (B-flat) and a common time signature (C). The system concludes with a double bar line and a fermata.

Handwritten musical notation for the fourth system. The treble clef staff contains chords with accidentals and slurs. The bass clef staff shows a key signature of one flat (B-flat) and a common time signature (C). The system concludes with a double bar line and a fermata.

(reize dich) und gütendank

ped.

grüßes (mit -) dir!

Leute (A)

grüßes (mit - - - -)

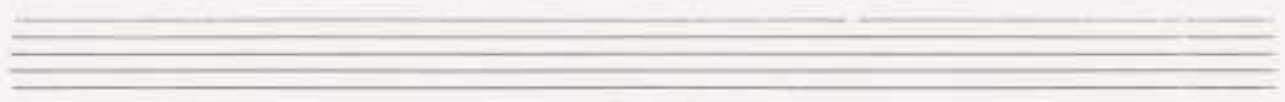
pp

ppp

D.C. al

Teil 1 al

© 2007



♩ **corda** (großes mit + klein)

Handwritten musical notation for the first system. It consists of a grand staff with a treble clef on the upper staff and a bass clef on the lower staff. The upper staff contains a melodic line with notes G#4, A4, and B4, each with a circled 'pp' dynamic marking. The lower staff contains a bass line with notes G#3 and A3, with an accent (^) over the A3. A 'Pedal' marking is written below the bass staff, with a chord diagram showing G#3, A3, and B3. A long blue slur spans across both staves.

Handwritten musical notation for the second system, continuing the grand staff from the first system. The upper staff continues the melodic line with notes G#4, A4, and B4. The lower staff continues the bass line with notes G#3 and A3, with accents (^) over the A3 notes. A long blue slur spans across both staves.

Handwritten musical notation for the third system. The upper staff contains a melodic line with notes G#4, A4, and B4, with a circled 'pp' dynamic marking and a 'lunga' marking above. The lower staff contains a bass line with notes G#3 and A3, with a circled 'pp' dynamic marking and a 'lunga' marking below. A long blue slur spans across both staves. The system ends with a double bar line and the number '11-211' written vertically on the right.

Teil 2

Allegro Assai

Handwritten musical notation for the first system. It consists of two staves. The upper staff has a treble clef and a sharp sign, with notes and chords. The lower staff has a bass clef and a sharp sign, with notes and chords. Above the upper staff, there are four upward-pointing slurs. The notation includes various notes, rests, and chords with accidentals.

Handwritten musical notation for the second system. It consists of two staves. The upper staff has a treble clef and a sharp sign, with notes and chords. The lower staff has a bass clef and a sharp sign, with notes and chords. Above the upper staff, there are seven upward-pointing slurs. The notation includes various notes, rests, and chords with accidentals.

Handwritten musical notation for the third system. It consists of two staves. The upper staff has a treble clef and a sharp sign, with notes and chords. The lower staff has a bass clef and a sharp sign, with notes and chords. Above the upper staff, there are seven upward-pointing slurs. The notation includes various notes, rests, and chords with accidentals.

Handwritten musical notation for the fourth system. It consists of two staves. The upper staff has a treble clef and a sharp sign, with notes and chords. The lower staff has a bass clef and a sharp sign, with notes and chords. Above the upper staff, there are seven upward-pointing slurs. The notation includes various notes, rests, and chords with accidentals.

(over) sehr rhythmisch betont

Handwritten musical notation for the first system. The top staff is a grand staff with treble and bass clefs. The bottom staff is a separate bass clef staff. The notation includes notes with accents and stems, and chordal accompaniment with stems and flags.

Handwritten musical notation for the second system. The top staff is a grand staff with treble and bass clefs. The bottom staff is a separate bass clef staff. The notation includes notes with accents and stems, and chordal accompaniment with stems and flags.

Handwritten musical notation for the third system. The top staff is a grand staff with treble and bass clefs. The bottom staff is a separate bass clef staff. The notation includes notes with accents and stems, and chordal accompaniment with stems and flags.

Handwritten musical notation for the fourth system. The top staff is a grand staff with treble and bass clefs. The bottom staff is a separate bass clef staff. The notation includes notes with accents and stems, and chordal accompaniment with stems and flags.

Handwritten musical score for the first system. The treble clef staff begins with a circled 'P' and contains a melodic line with a slur and a fermata. The bass clef staff contains a complex chordal accompaniment with many notes and accidentals.

Cresc.

Handwritten musical score for the second system, starting with the word *Cresc.* in italics. It features a treble clef with a circled 'P' and a bass clef with a circled 'P'. The treble staff has a melodic line with a slur and a fermata. The bass staff has a complex chordal accompaniment.

Handwritten musical score for the third system, featuring a treble clef with a circled 'P' and a bass clef with a circled 'P'. The treble staff has a melodic line with a slur and a fermata. The bass staff has a complex chordal accompaniment.

Handwritten musical score for the fourth system, featuring a treble clef and a bass clef. The treble staff has a melodic line with slurs and accents. The bass staff has a complex chordal accompaniment with many notes and accidentals.

sempre din

(größer mit...)

lento (♩) zart

Handwritten musical score for the first system. The treble clef contains notes with various accidentals (flats, sharps, naturals) and slurs. The bass clef contains a series of notes with a 'Ped.' marking. Dynamics include *fp* and *p*.

Handwritten musical score for the second system. The treble clef contains notes with accidentals and slurs. The bass clef contains a series of notes with a 'Ped.' marking. Dynamics include *pf* and *f*.

Handwritten musical score for the third system. The treble clef contains notes with accidentals and slurs. The bass clef contains a series of notes with a 'Ped.' marking. Dynamics include *fp* and *f*.

Handwritten musical score for the fourth system. The treble clef contains notes with accidentals and slurs. The bass clef contains a series of notes with a 'Ped.' marking. Dynamics include *p* and *pcc*.

lento (♩) *sehr ruhig*

pp

attacca

D.C.

cod

Tempo [1] *Allegro agitato*

sempre cresc.

Handwritten musical notation for the first system. The treble clef staff shows a sequence of chords in a key signature of two flats (B-flat and E-flat). The bass clef staff shows a bass line with a fermata over the final measure.

Handwritten musical notation for the second system. The treble clef staff continues the chordal sequence. The bass clef staff features a fermata and a final chord in the key signature of two flats.

Handwritten musical notation for the third system. The treble clef staff continues the chordal sequence. The bass clef staff features a fermata and a final chord in the key signature of two flats.

Handwritten musical notation for the fourth system. The treble clef staff continues the chordal sequence. The bass clef staff features a fermata and a final chord in the key signature of two flats.

dim

lecho (größte Steigerung)

mysterioso (♩)

Handwritten musical notation for the first system. It features a grand staff with a treble clef and a 3/8 time signature. The music begins with a circled measure containing a quarter note. The right hand contains a melodic line with slurs and accents, while the left hand provides a harmonic accompaniment. The dynamic marking *ppp* is present. A *Ped.* instruction is written below the first staff.

Handwritten musical notation for the second system, continuing the piece. It maintains the 3/8 time signature and features similar melodic and harmonic textures with slurs and accents.

Handwritten musical notation for the third system. The notation includes complex chordal structures and melodic lines with slurs and accents. A *Pedal* instruction is written below the first staff.

Handwritten musical notation for the fourth system, concluding the piece. It features a final melodic phrase with slurs and accents, and a concluding chord in the left hand.

Handwritten musical notation for the first system. Treble clef with a circled sharp sign. Bass clef with a circled sharp sign. Key signature: one flat. Includes notes, rests, and dynamic markings. A "Ped." marking is present in the bass staff.

Handwritten musical notation for the second system. Treble clef with a circled sharp sign. Bass clef with a circled sharp sign. Key signature: one flat. Includes notes, rests, and dynamic markings.

Handwritten musical notation for the third system. Treble clef with a circled sharp sign. Bass clef with a circled sharp sign. Key signature: one flat. Includes notes, rests, and dynamic markings. A "Pedal" marking is present in the bass staff.

Handwritten musical notation for the fourth system. Treble clef with a circled sharp sign. Bass clef with a circled sharp sign. Key signature: one flat. Includes notes, rests, and dynamic markings. The marking "(poco rit.)" is written in the bass staff.

leut(er) oder brei 7

Handwritten musical notation for the first system, consisting of two staves with treble and bass clefs. The notation includes various notes, rests, and accidentals (sharps) in a key signature of one sharp (F#). The first staff has a treble clef and the second has a bass clef. The music is written in a cursive, handwritten style with some annotations like 'y' and '>' above notes.

Handwritten musical notation for the second system, consisting of two staves with treble and bass clefs. The notation includes various notes, rests, and accidentals (sharps) in a key signature of one sharp (F#). The first staff has a treble clef and the second has a bass clef. The music is written in a cursive, handwritten style with some annotations like 'y' and '>' above notes.

Handwritten musical notation for the first system. The top staff contains notes with accidentals (sharps and flats) and dynamic markings such as γ and g . The bottom staff contains notes with accidentals and dynamic markings such as γ and g . The system is divided into three measures by vertical bar lines.

Handwritten musical notation for the second system. The top staff contains notes with accidentals (sharps and flats) and dynamic markings such as γ and g . The bottom staff contains notes with accidentals and dynamic markings such as γ and g . The system is divided into three measures by vertical bar lines.

Handwritten musical notation for the third system. The top staff contains notes with accidentals (sharps and flats) and dynamic markings such as γ and g . The bottom staff contains notes with accidentals and dynamic markings such as γ and g . The system is divided into three measures by vertical bar lines. A circled dim marking is present above the first measure of the top staff.

(dün + rit)

Handwritten musical notation for the first system. The treble clef part consists of two measures. The first measure has a quarter note G4, a quarter note A4, a half note B4, and a quarter note C5. The second measure has a quarter note B4, a quarter note A4, a half note G4, and a quarter note F4. The bass clef part also has two measures. The first measure has a quarter note G3, a quarter note A3, a half note B3, and a quarter note C4. The second measure has a quarter note B3, a quarter note A3, a half note G3, and a quarter note F3. There are dynamic markings like accents and a 'rit' (ritardando) marking.

Handwritten musical notation for the second system. The treble clef part has two measures. The first measure has a quarter note G4, a quarter note A4, a half note B4, and a quarter note C5. The second measure has a quarter note B4, a quarter note A4, a half note G4, and a quarter note F4. The bass clef part has two measures. The first measure has a quarter note G3, a quarter note A3, a half note B3, and a quarter note C4. The second measure has a quarter note B3, a quarter note A3, a half note G3, and a quarter note F3. There are dynamic markings like accents and 'pp' (pianissimo).

Handwritten musical notation for the third system. The treble clef part has two measures. The first measure has a quarter note G4, a quarter note A4, a half note B4, and a quarter note C5. The second measure has a quarter note B4, a quarter note A4, a half note G4, and a quarter note F4. The bass clef part has two measures. The first measure has a quarter note G3, a quarter note A3, a half note B3, and a quarter note C4. The second measure has a quarter note B3, a quarter note A3, a half note G3, and a quarter note F3. There are dynamic markings like accents and 'ppp' (pianississimo).

35

(solo-frei) wie eine Kindersong

D.C.
Teil ② al
♩ CODA

CODA (Allegro assai — (accel. — Prestissimo)

Handwritten musical notation for the first system. It features a treble clef, a 4/4 time signature with a circled double sharp (#) above the 4, and a key signature of two sharps (F# and C#). The notation includes several chords with accents (^) and slurs, and a bass line with vertical stems and dots. A brace spans the bottom of the system.

Handwritten musical notation for the second system. It features a treble clef and a bass clef. The notation includes chords with accents (^) and slurs, and a bass line with vertical stems and dots. A brace spans the bottom of the system.

Handwritten musical notation for the third system. It features a treble clef and a bass clef. The notation includes chords with accents (^) and slurs, and a bass line with vertical stems and dots. A brace spans the bottom of the system, ending with a large arrow pointing to the right.

→ (accel. →)

Presto

Lunga

1971
August
(Wien)
Adolf Scherbaum